



Demersal Fishing
Opportunities for 2021

Mike Park: CEO Scottish White Fish Producers Association

Cod (*Gadus morhua*) in Subarea 4, Division 7.d, and Subdivision 20 (North Sea, eastern English Channel, Skagerrak)

ICES advice on fishing opportunities

ICES advises that when the MSY approach is applied, catches in 2021 should be no more than 14 755 tonnes.

ICES notes the existence of a precautionary management plan, developed and adopted by one of the relevant management authorities for this stock.

Note: This advice sheet is abbreviated due to the COVID-19 disruption. The previous advice issued for 2020 is attached as Annex 1.

Stock development over time

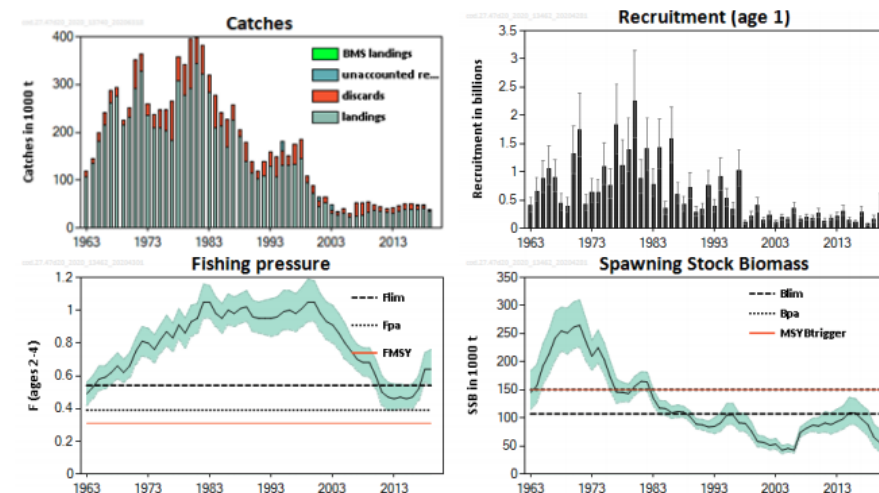
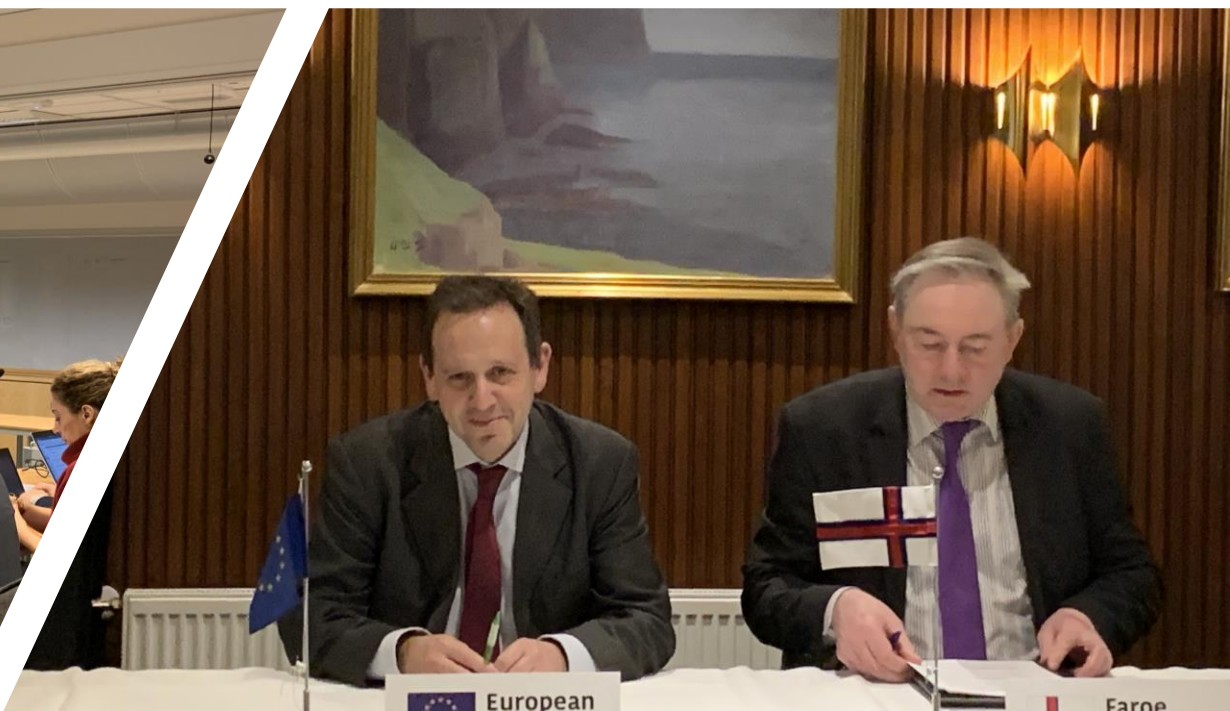


Figure 1 Cod in Subarea 4, Division 7.d, and Subdivision 20. Summary of the stock assessment. Catches are assessment estimates. Only positive unaccounted removals are plotted (see Table 5). Shaded areas (F, SSB) and error bars (R) indicate 95% confidence intervals. Landings below minimum conservation reference size (BMS) as officially reported.

Table 3 Cod in Subarea 4, Division 7.d, and Subdivision 20. Annual catch scenarios. All weights are in tonnes (t).

Basis	Total catch (2021)	Projected landings * (2021)	Projected discards ** (2021)	F _{total} (2021)	F _{projected} landings (2021)	F _{projected} discards (2021)	SSB (2022)	% SSB change ***	% TAC change A	% advice change AA
ICES advice basis										
MSY approach: F _{MSY} × SSB (2021) / MSY B _{trigger}	14755	12632	2123	0.162	0.136	0.026	112758	44	-16.5	7.8
Other scenarios #										
F = MAP AAA F _{MSY} lower × SSB (2021) / MSY B _{trigger}	9672	8291	1381	0.103	0.087	0.0160	118040	51	-45	-29
F = 0	0	0	0	0.00	0.00	0.00	128848	65	-100	-100
F _{pa}	32411	27556	4855	0.39	0.33	0.063	93679	19.6	83	137
F _{lim}	42307	35860	6447	0.54	0.45	0.088	83289	6.4	139	210
SSB (2022) = B _{lim}	20325	17350	2975	0.23	0.192	0.037	107000	37	15.0	49
SSB (2022) = MSY B _{trigger} = B _{pa} ##										
TAC (2020) - 20%	14143	12113	2030	0.155	0.130	0.025	113403	45	-20	3.3
TAC (2020) - 15%	15027	12862	2165	0.165	0.138	0.027	112489	44	-15.0	9.8
TAC (2020) - 10%	15911	13608	2303	0.175	0.147	0.028	111649	43	-10.0	16.3
TAC (2020) - 5%	16795	14354	2441	0.186	0.156	0.030	110758	41	-5.0	23
TAC (2020)	17679	15102	2577	0.197	0.165	0.032	109876	40	0.00	29
TAC (2020) + 5%	18563	15851	2712	0.21	0.174	0.033	108999	39	5.0	36
TAC (2020) + 10%	19447	16601	2846	0.22	0.183	0.035	108059	38	10.0	42
TAC (2020) + 15%	20330	17355	2975	0.23	0.192	0.037	106995	37	15.0	49
TAC (2020) + 20%	21215	18099	3116	0.24	0.20	0.039	106020	35	20	55
F = F ₂₀₂₀	25375	21605	3770	0.29	0.25	0.048	101262	29	44	85
F = F _{MSY} lower	17794	15199	2595	0.198	0.166	0.032	109762	40	0.65	30



2020 JOINT STOCK QUOTAS IN THE NORTH SEA

Species and ICES Area		TAC	Zonal Attachment ⁽⁷⁾				Transfer from Norway to European Union ⁽⁵⁾	Transfer from EU to Norway ⁽⁵⁾	Quota to Norway		Quota to European Union	
			Norway		European Union				Total	EU Zone ⁽¹⁾	Total	Norwegian Zone ⁽¹⁾
			%	Tonnes	%	Tonnes						
Cod	4	14,718	17	2,502	83	12,216			2,502	2,502	12,216	10,618
Haddock	4	35,653 ⁽²⁾	23	8,200	77	27,452	300		7,900	7,900	27,752	20,644
Saithe	4, 3.a	79,813	52	41,503	48	38,310		200	41,703	41,703	38,110	38,110
Whiting	4	17,158 ⁽²⁾	10	1,716	90	15,442	500		1,216	1,216	15,942	10,801
Plaice	4	146,852	7	10,280 ⁽⁶⁾	93	136,572			10,280	10,280	136,572	56,041
Herring	4, 7.d	385,008	29	111,652	71	273,356			111,652	50,000 ⁽³⁾⁽⁴⁾	273,356	50,000 ⁽⁴⁾

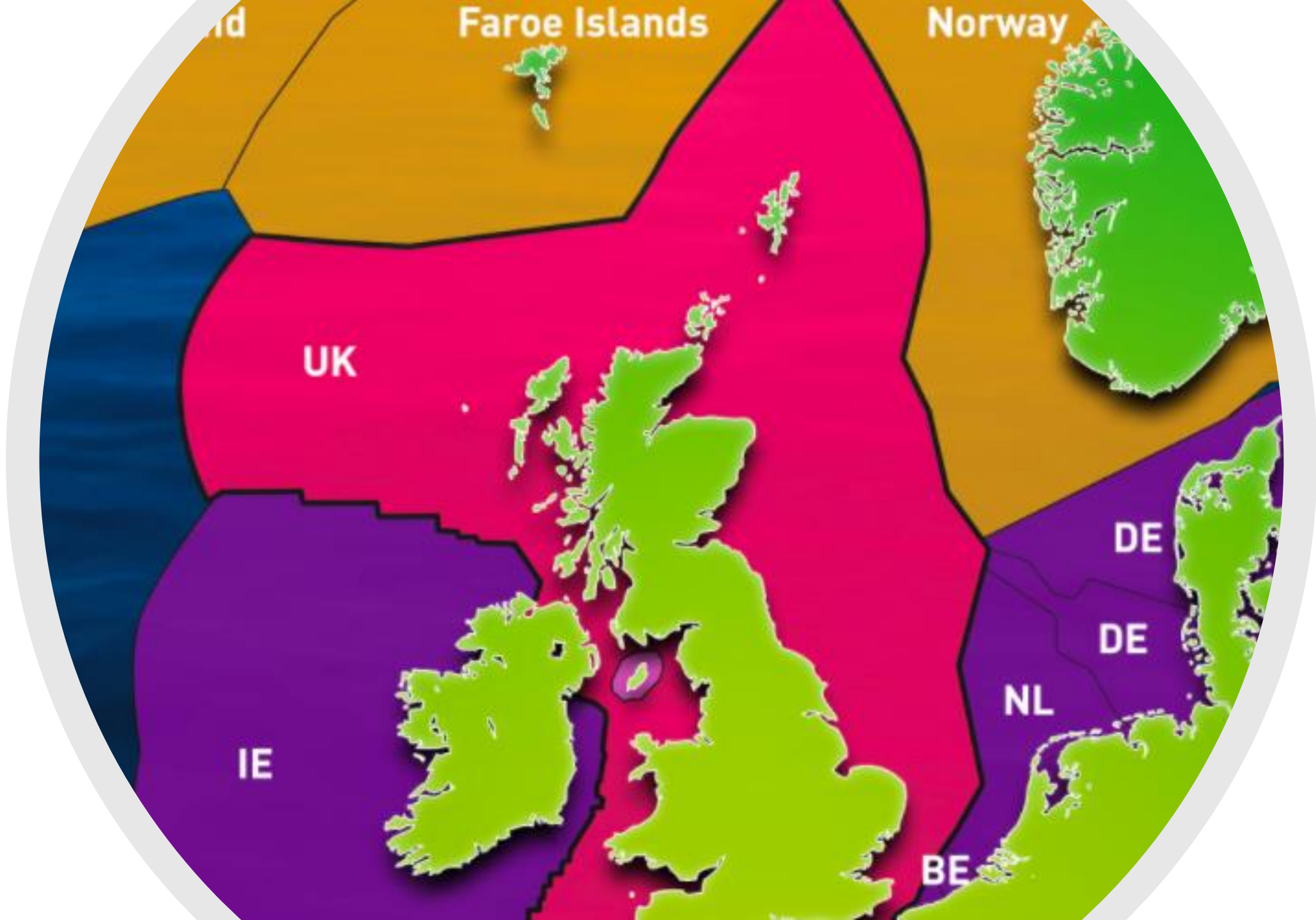
Species:	Cod Gadus morhua	Zone:	4; Union waters of 2a; that part of 3a not covered by the Skagerrak and Kattegat (COD/2A3AX4)
Belgium	435 ⁽¹⁾	Analytical TAC	
Denmark	2 499		
Germany	1 584		
France	537 ⁽¹⁾		
The Netherlands	1 412 ⁽¹⁾		
Sweden	17		
United Kingdom	5 732 ⁽¹⁾		
Union	12 216		
Norway	2 502 ⁽²⁾		
TAC	14 718		

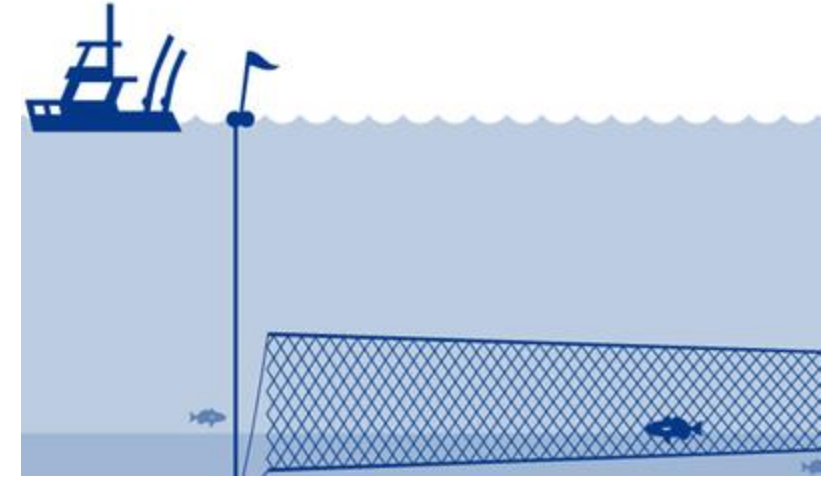
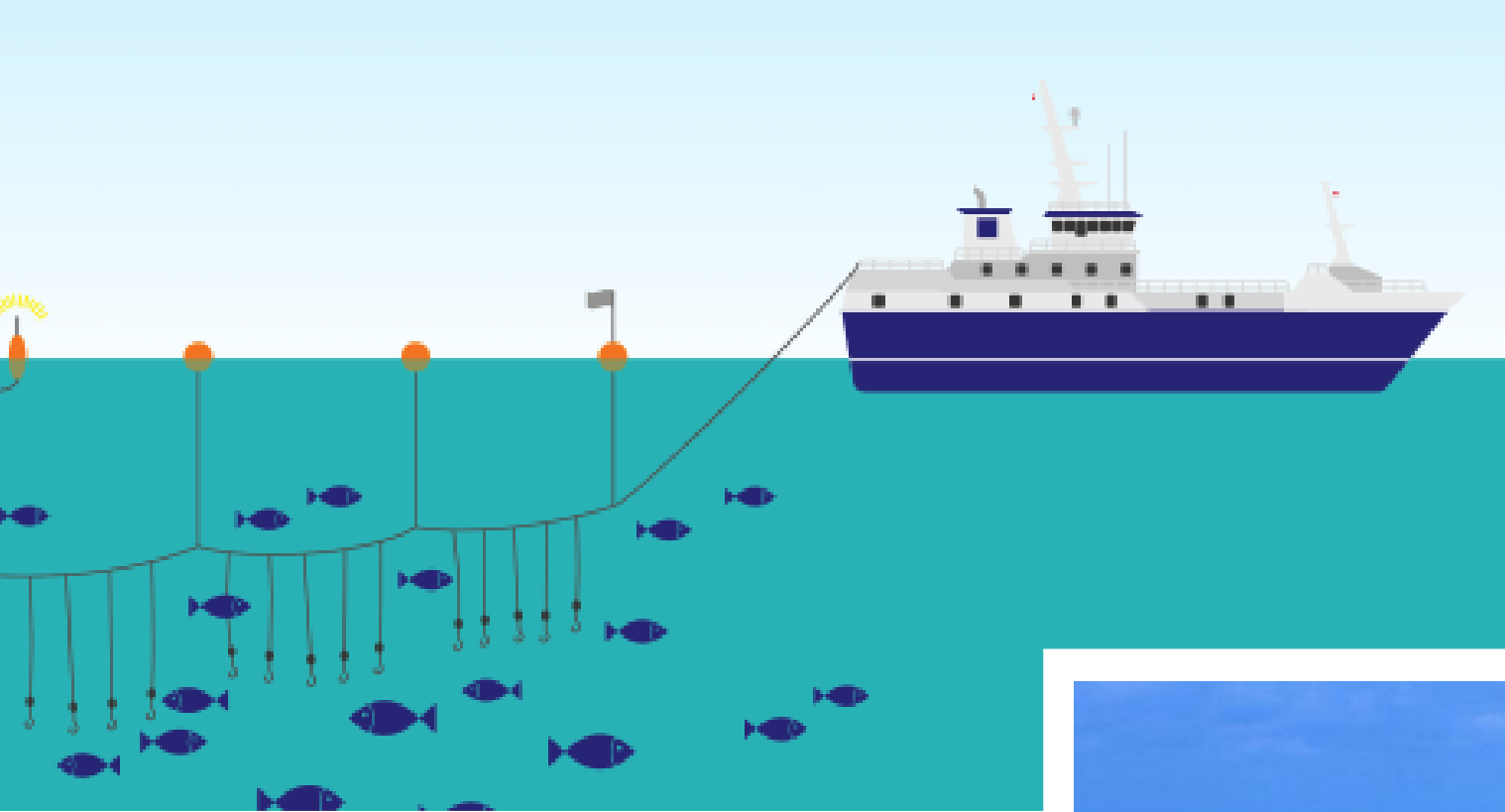


Year	Stock	UK Relative Stability	UK Uptake
2015-19 average	NS Cod	47%	128%
2015-19 average	NS Haddock	78%	96%
2015-19 average	NS Whiting	53%	102%
2015-19 average	NS Saithe	17%	150%
2015-19 average	NS Plaice	28%	40%
2015-19 average	NS Sole	4%	99%
2015-19 average	NS Hake	18%	708%
2015-19 average	NS Nephrops	87%	68%
2015-19 average	NS Anglerfish	81%	89%
2015-19 average	NS Megrim	96%	53%
2015-19 average	NS Lemon Sole/Wit	61%	45%

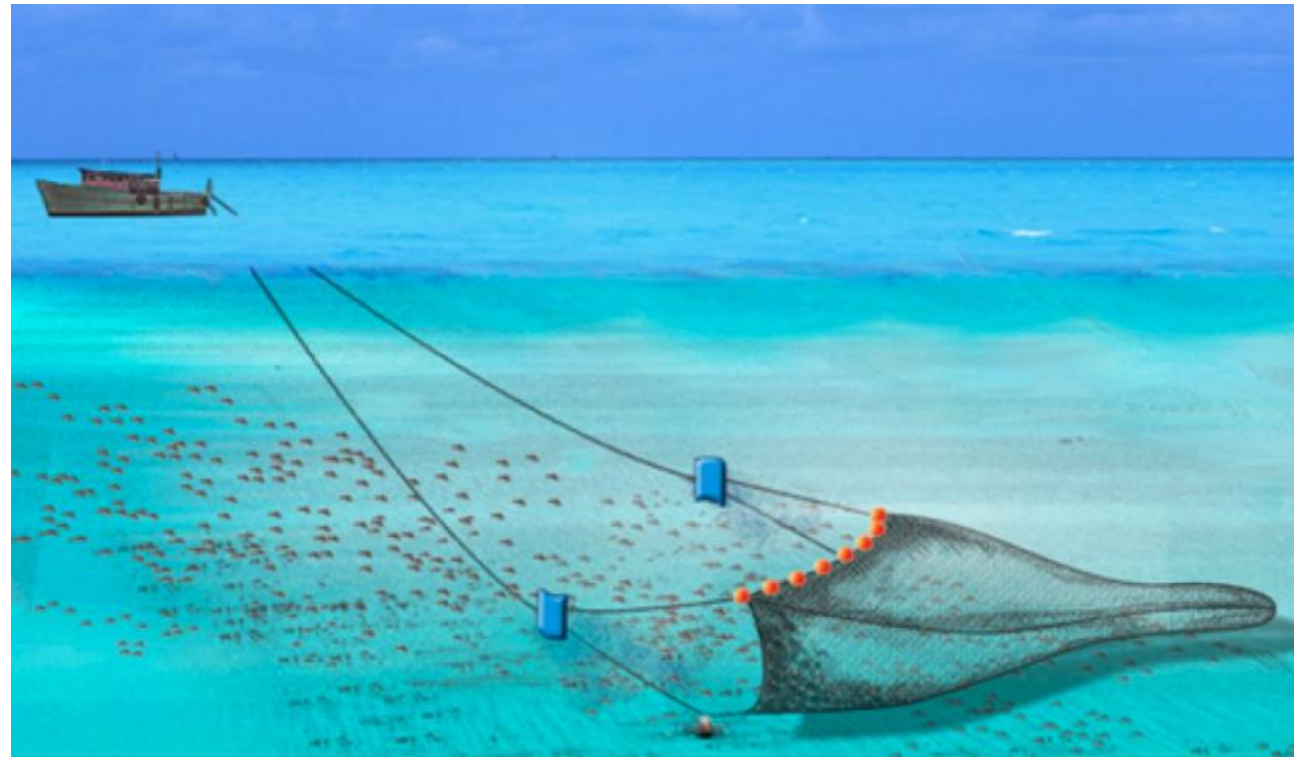


	Catches 2020 (t)	Allocation 2021 (t)	Variation on 2020 catches (t)	Value
Cod	6965	4199	-2766	£9,700,000
Haddock	17240	25180	7940	
Whiting	9208	9256	48	
Saithe	6893	5128	-1765	£2,647,500
Hake	4178	6668	2490	
Anglerfish	10881	11685	804	
Megrim	2522	4013	1491	
Ling	3990	7029	3039	
Lemon sole and witch	1223	2408	1185	
Norway Others	1742	0	-1742	£5,226,000
Nephrops	13387	22485	9098	
Plaice	2789	11906	9117	
Rockall haddock	4041	5676	1635	
Faroe	1857	0	-1857	£5,571,000
	86916	115633	28717	£23,144,500





- Over 150 non UK vessels operating in Scottish waters
- Extreme competition for space
- Heightened tensions





Demersal Fishing Opportunities for 2021

Mike Park: CEO Scottish White Fish Producers Association