

ICES advice and quotas for 2020

Dr Coby Needle, Chief Fisheries Advisor
Marine Scotland - Science



NESFDP
Woodhill House, Aberdeen
21 February 2020

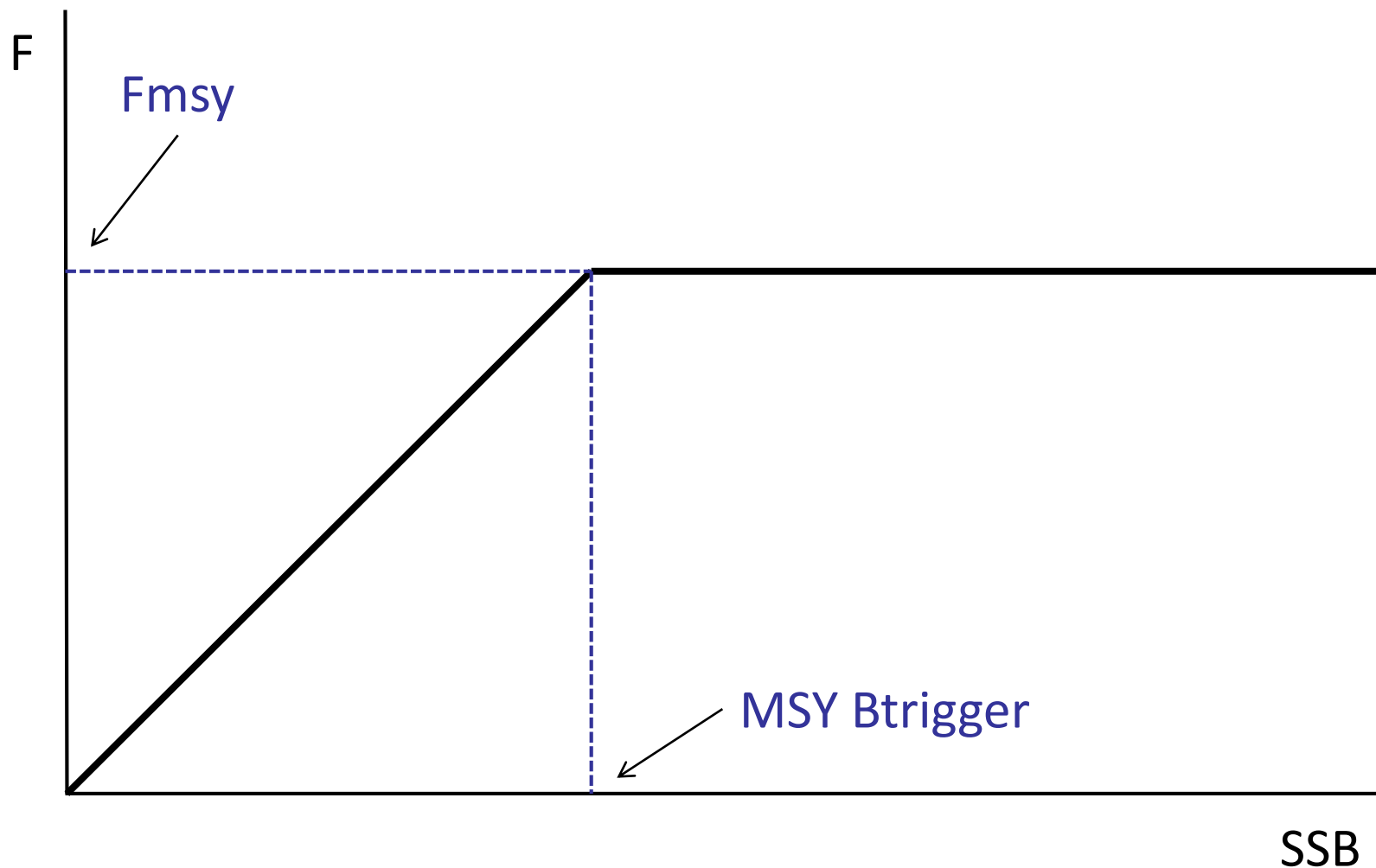
marinescotland
science

Background

- Main advice released by ICES on **28 June** (and 5 July for Northern hake)
- Further advice in the autumn for:
 - Some pelagic stocks
 - Rockall haddock, Rockall megrim, monkfish, west coast *Nephrops*
 - Updates following to some North Sea stocks following autumn surveys
- For the main Scottish commercial stocks I'll cover:
 - Stock assessment
 - ICES advice and updates
 - Quota decisions

Background

- Most advice is based on the ICES MSY approach
- EU-Norway LTMS is in development, but is not yet agreed and was not used to provide advice for 2020

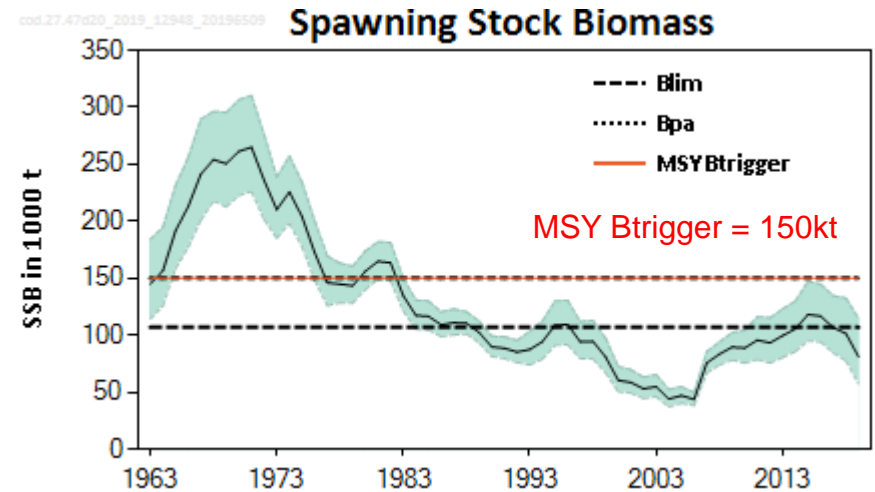
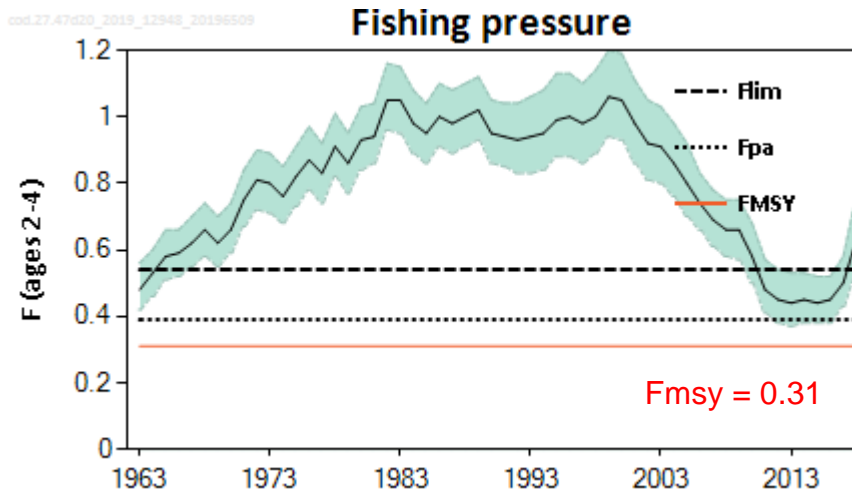
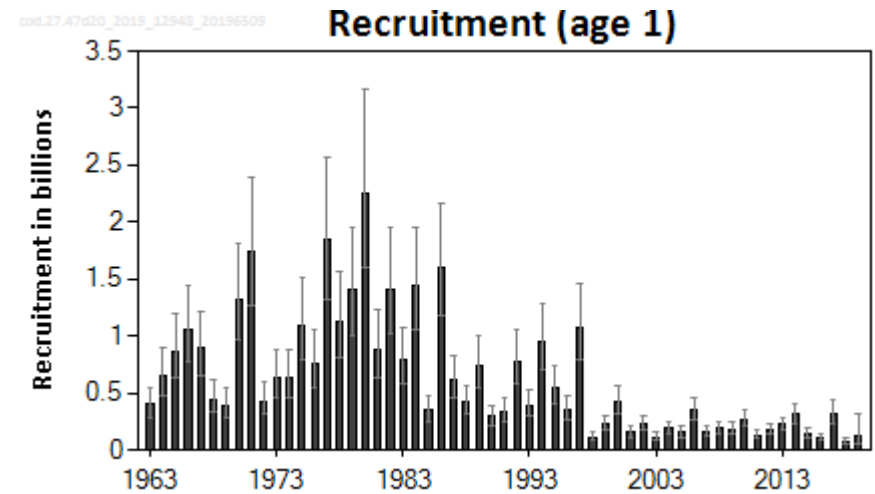
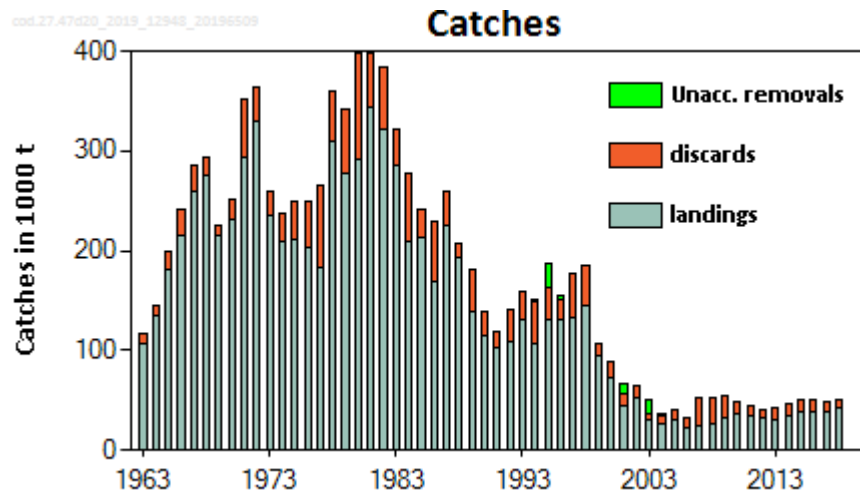
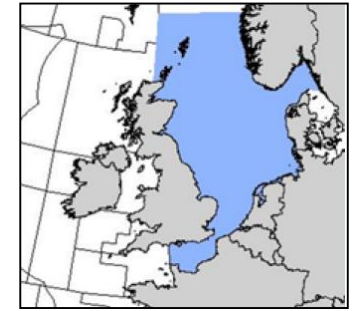


North Sea demersal

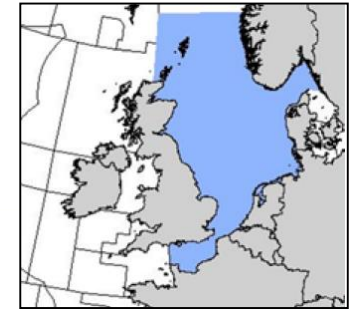


marinescotland
science

North Sea cod: summary



North Sea cod: advice and TAC decision



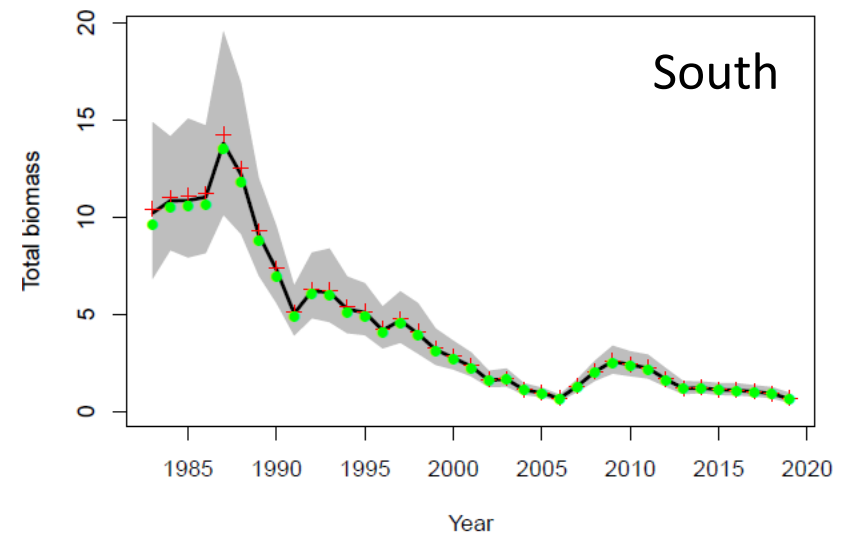
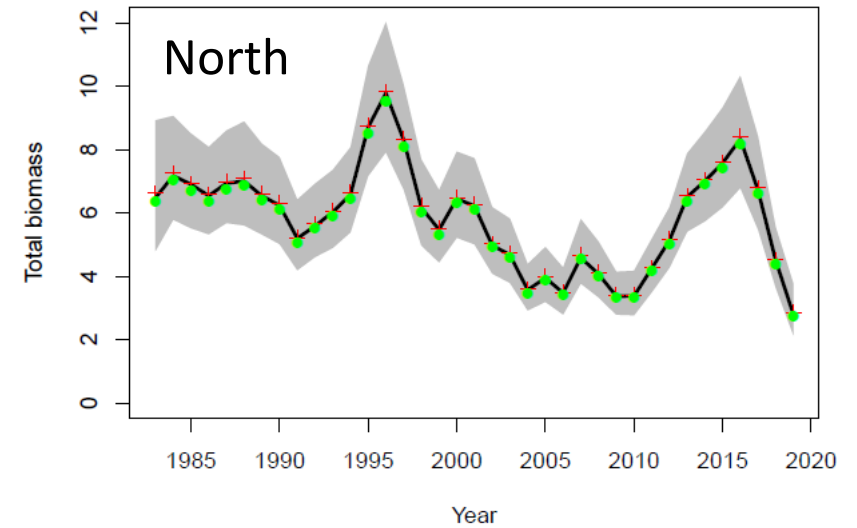
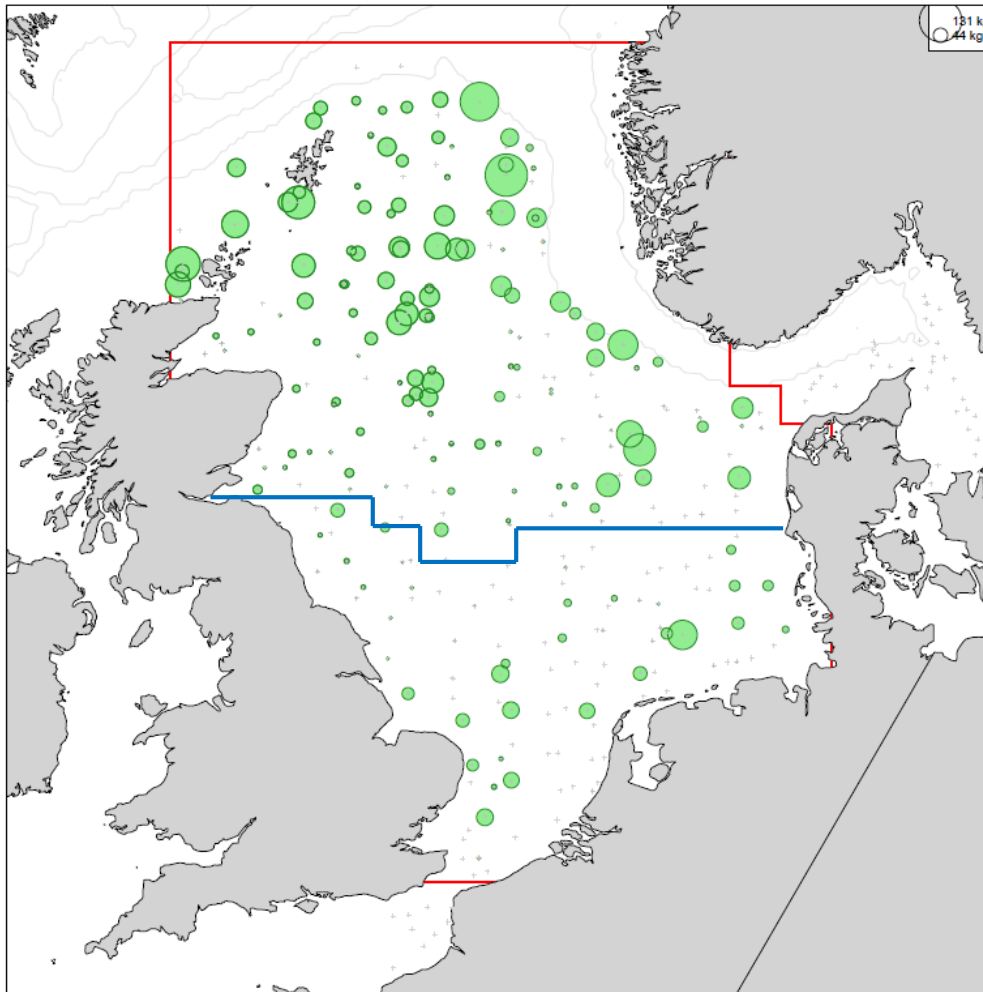
- MSY advice basis
 - But $SSB < Blim$ so advice is to increase SSB to $Blim$ by 2021
- TAC agreed after 3 rounds of EU-Norway negotiations
- Norway and most Member States argued for smaller cut of -30% to -50%
- Commission unwilling to move from -62%
- Final compromise:
 - 50% TAC cut with additional technical measures

	Advice (4, 3a, 7d)	% change from 2019 TAC	2020 TAC (4, 3a, 7d)	% change from 2019 TAC
Total catch 2020	13 686	-62%	17 679	-50%
SSB 2021	107 000 (+28%)			

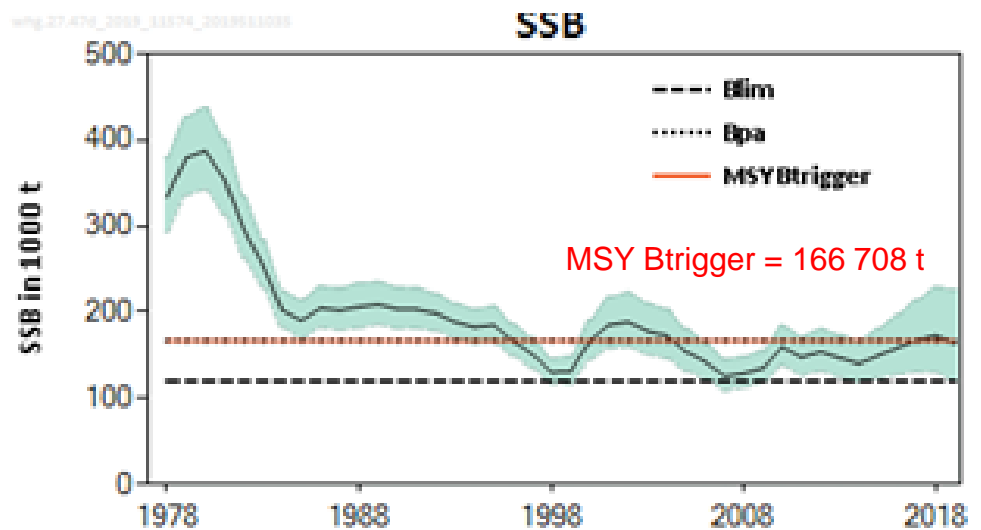
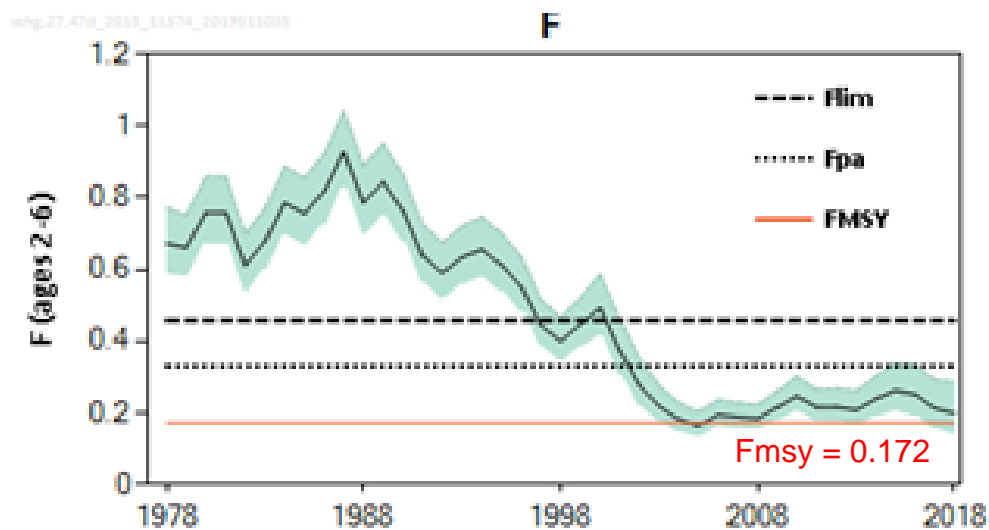
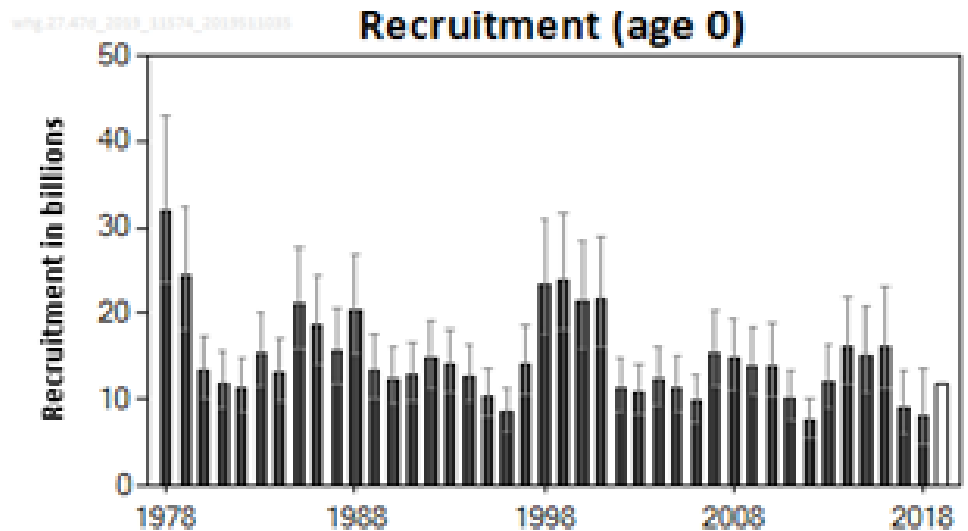
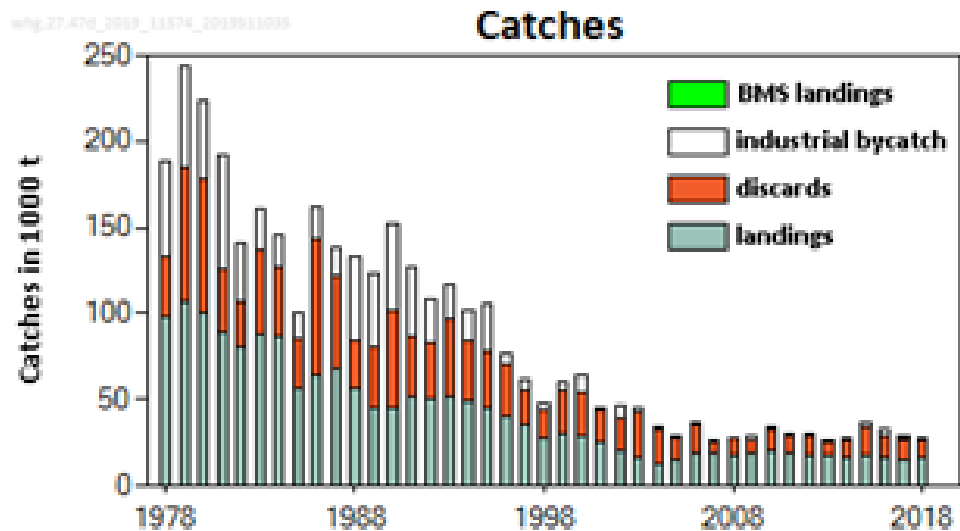
North Sea cod: stock distribution



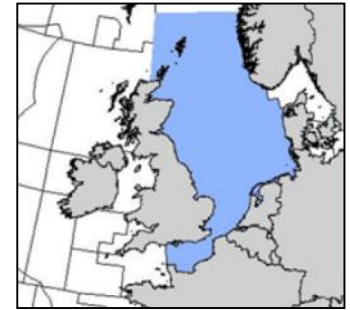
Cod 2019 Q1 NS-IBTS: biomass within area (4)



North Sea whiting: summary



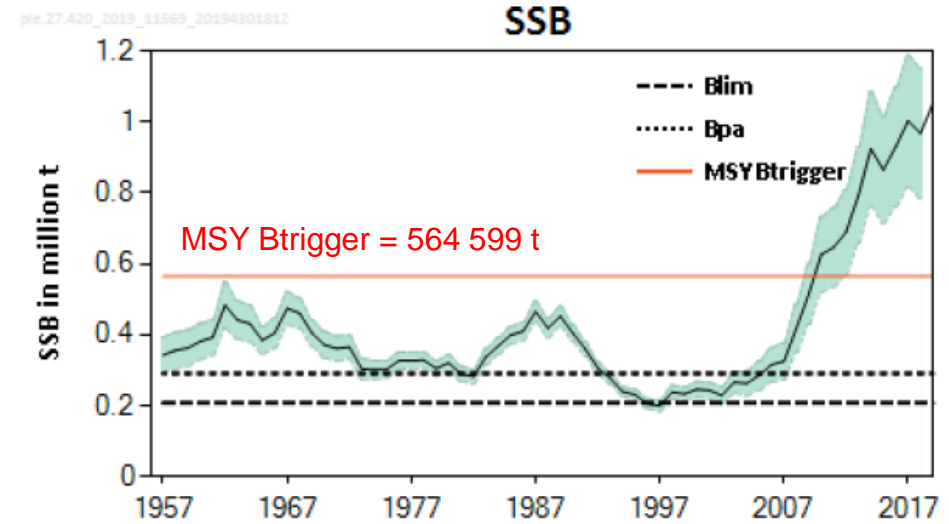
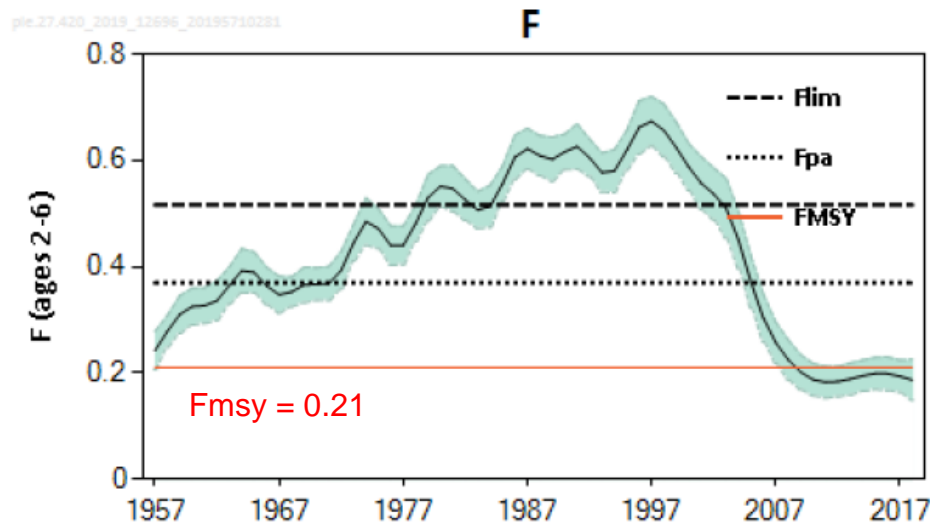
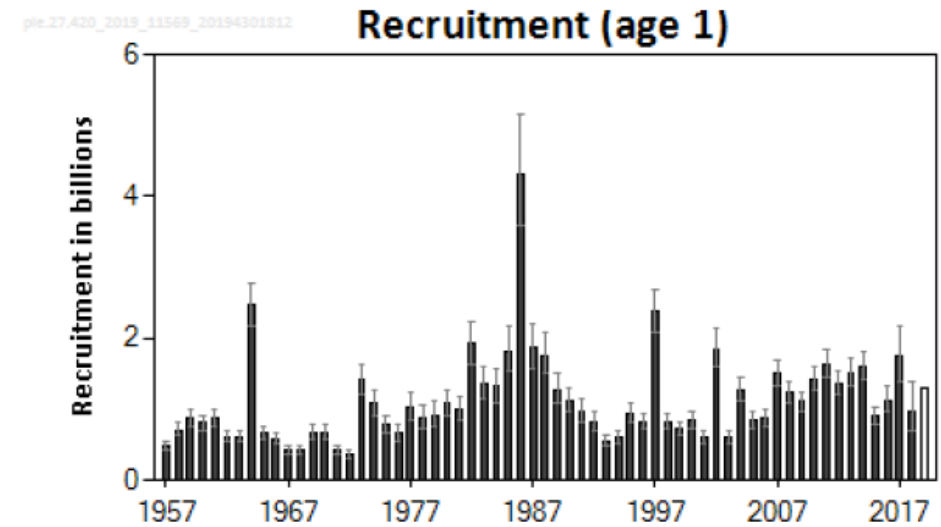
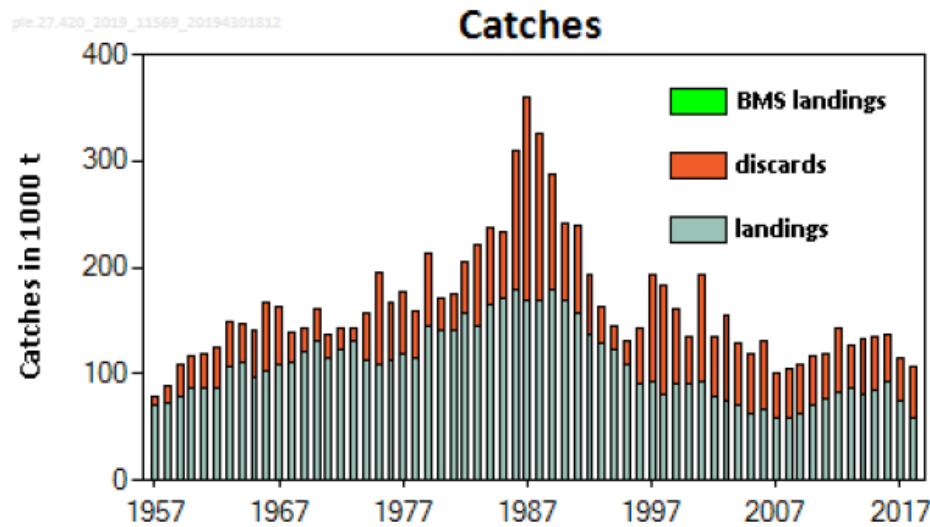
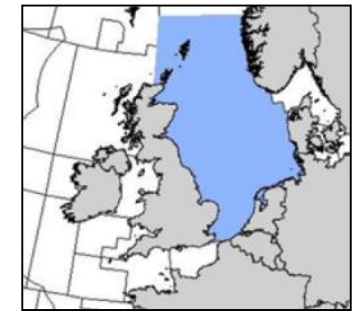
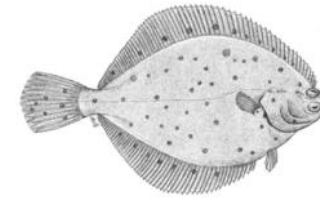
North Sea whiting: advice and TAC decision



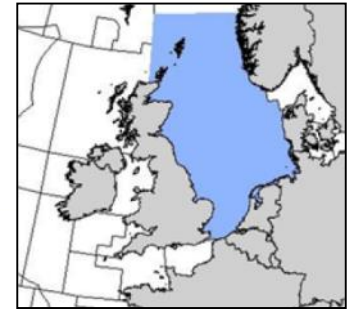
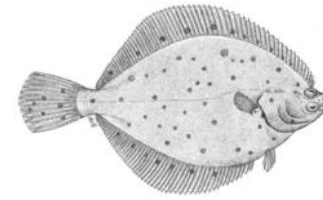
	Advice	% change from 2019 TAC (NS)	2020 TAC	% change from 2019 TAC
Total catch 2020 (all areas)	22 082	+28.5%		
HC catch 2020 (NS)	15 036	-12.5%	17 158	0%
SSB 2021	156 981 (+0.25%)			

- MSY advice basis
- Whiting more impacted by natural mortality

North Sea plaice: summary



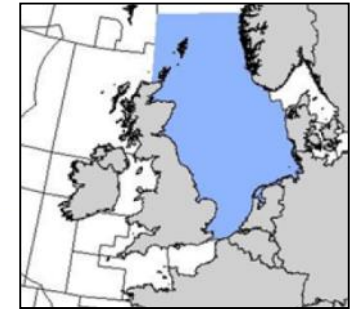
North Sea plaice: advice and TAC decision



	Advice (4, 3a)	% change from 2019 TAC	2020 TAC (4, 3a)	% change from 2019 TAC
Total catch 2020	166 499	+17%	166 499	+17%
SSB 2021	1 237 188 (+4.4%)			

- MSY advice basis

North Sea *Nephrops*: advice and TAC decision



	Advice (4)	% change from 2019 TAC	2020 TAC (4)	% change from 2019 TAC
Total catch 2020	24 755	+12%	23 002	+4%
SSB 2021	Unknown			

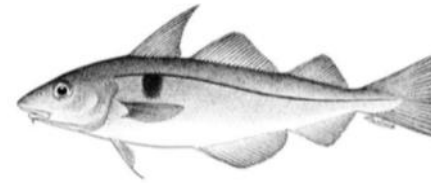
- MSY advice basis
- TAC increase limited by survivability discard exemption

Northern Shelf and widely distributed demersal



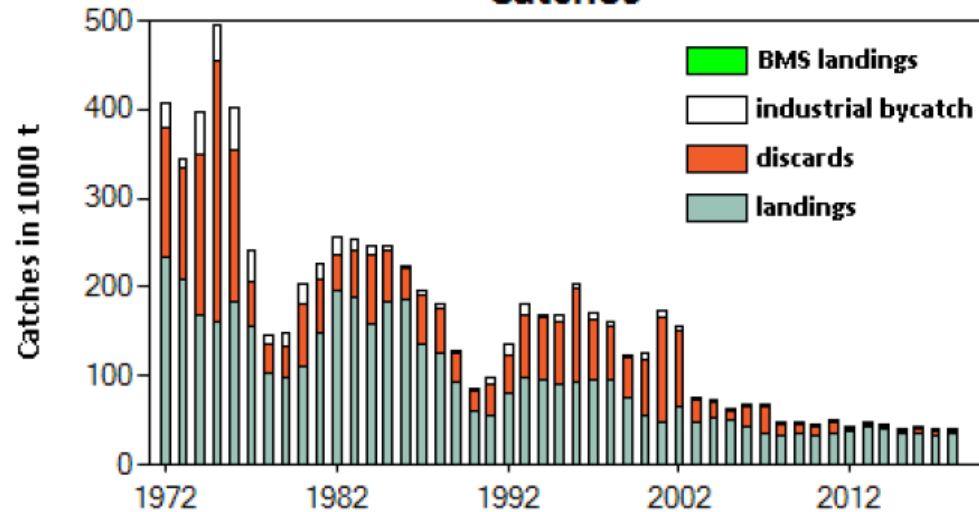
marinescotland
science

Northern Shelf haddock: summary



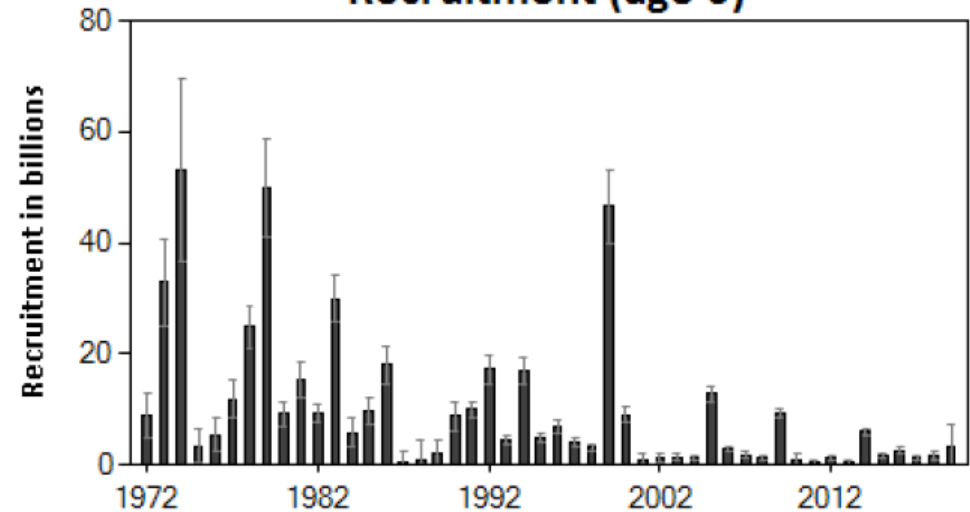
had.27.46e20_2019_12946_20196411

Catches



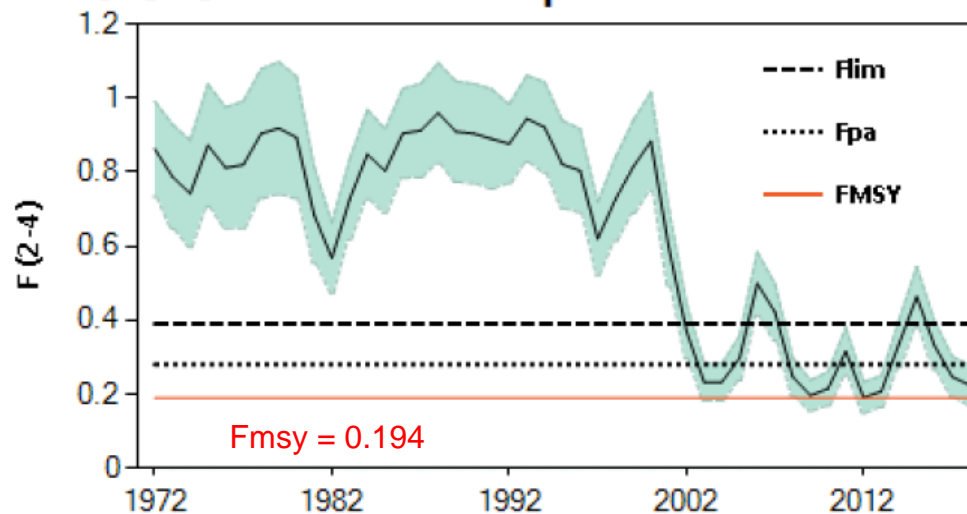
had.27.46e20_2019_12946_20196411

Recruitment (age 0)



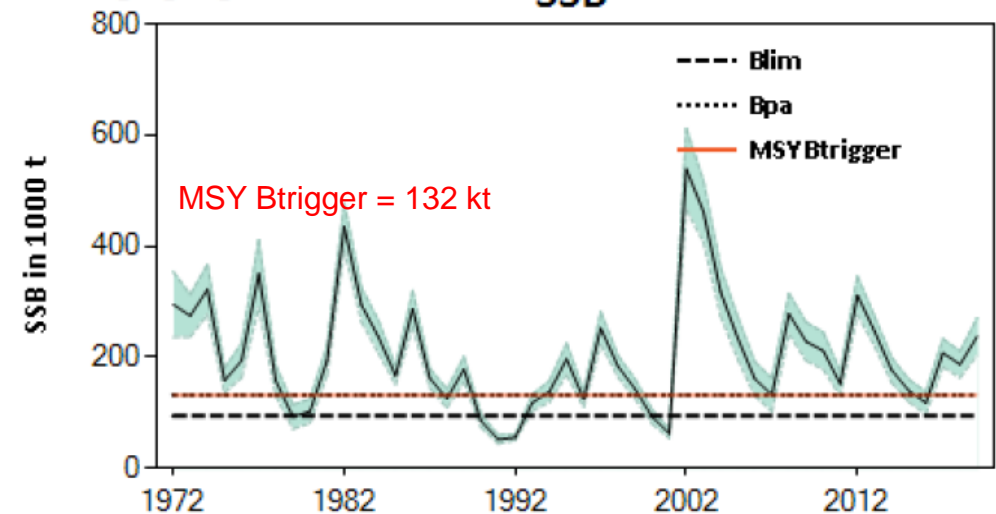
had.27.46e20_2019_12946_20196411

F



had.27.46e20_2019_12946_20196411

SSB



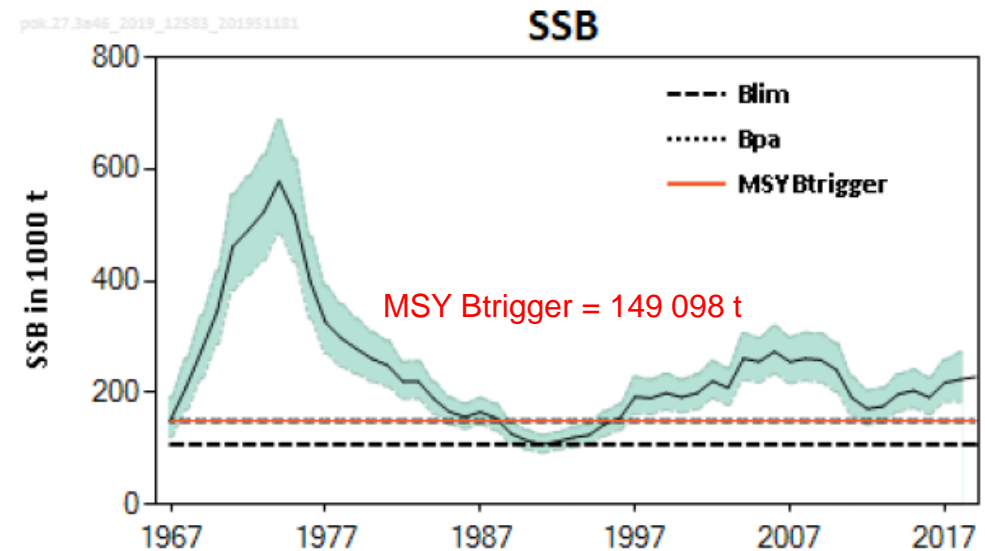
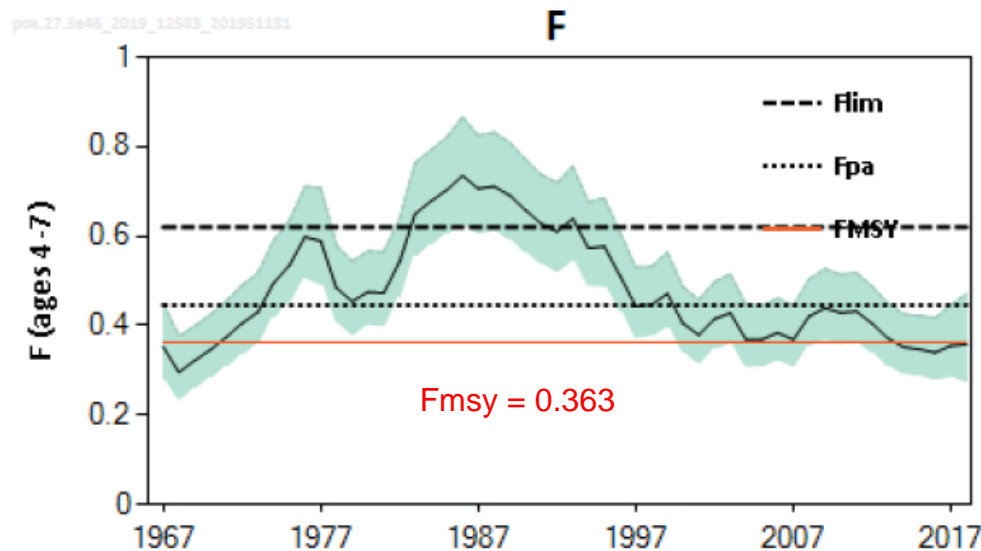
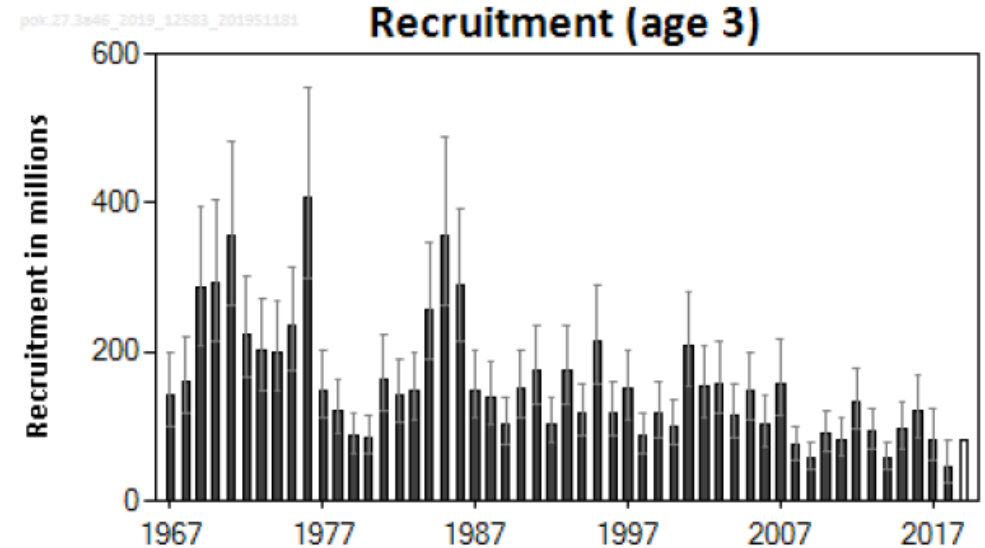
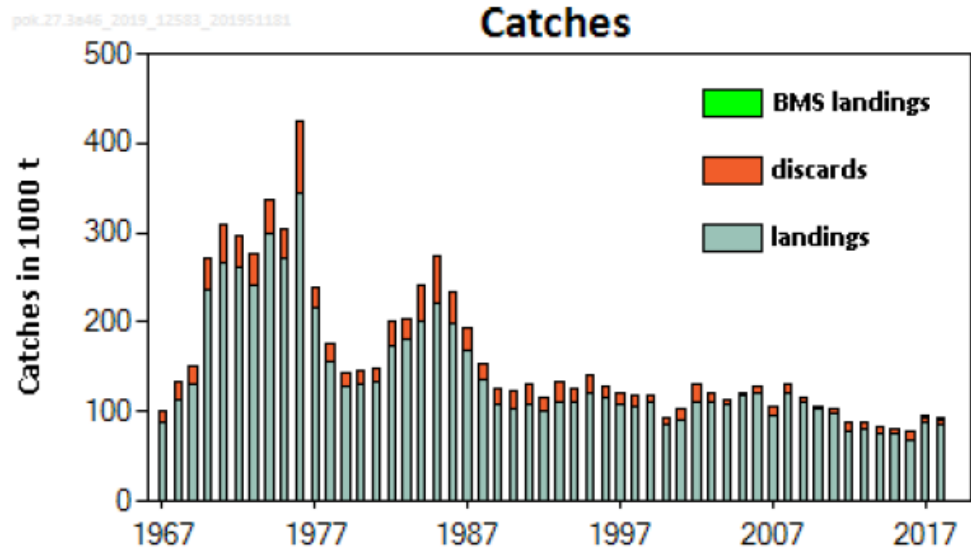
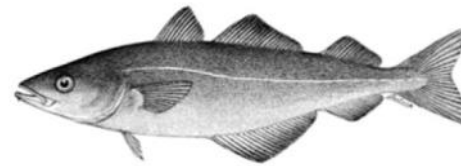
Northern Shelf haddock: advice and TAC decision



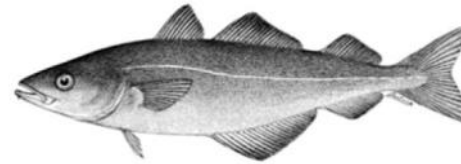
	Advice (4, 3a, 6a)	% change from 2019 TAC	2020 TAC (4, 3a, 6a)	% change from 2019 TAC
Total catch 2020	41 818	+23%	41 818	+23%
SSB 2021	196 886 (-3.5%)			

- MSY advice basis

Northern Shelf saithe: summary



Northern Shelf saithe: advice and TAC decision



	Advice (4,3a,6)	% change from 2019 TAC (4, 6a, 3a)	2020 TAC (4,3a,6)	% change from 2019 TAC
Total catch 2020	88 093	-15%	88 093	-15%
SSB 2021	213 159 (-1.93%)			

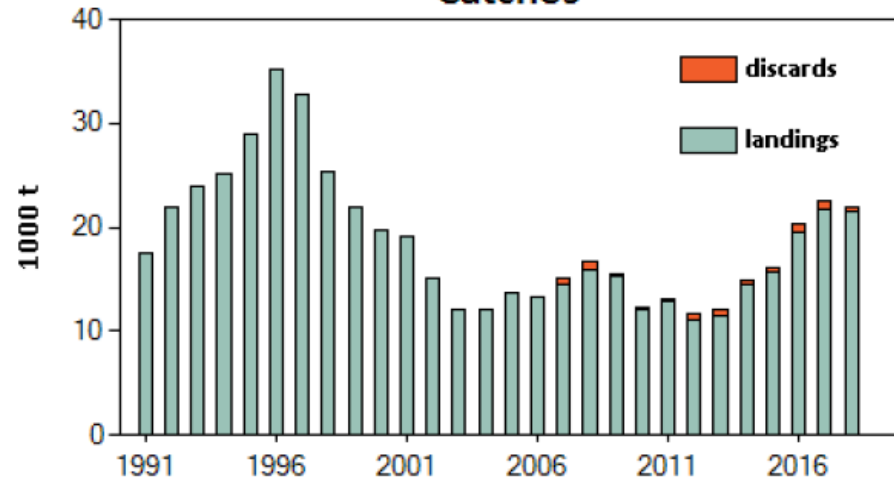
- MSY advice basis

Northern Shelf monkfish: summary



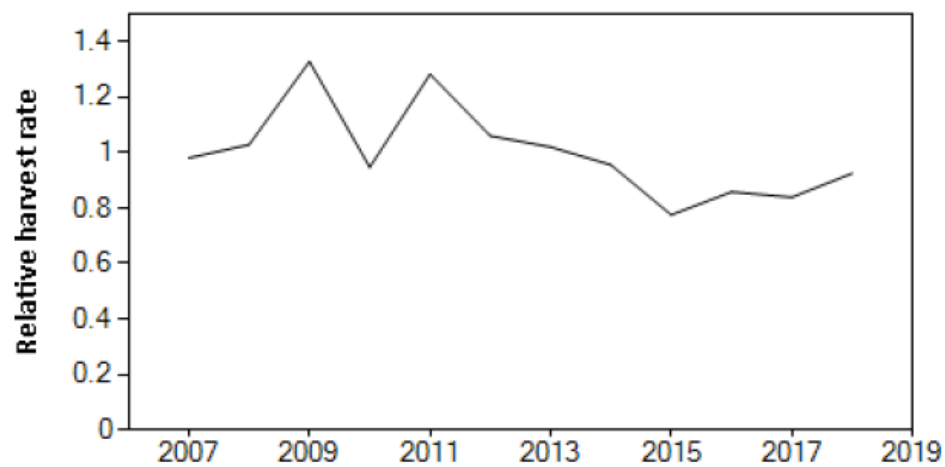
enf_27.3e46_2019_13218_2019101612

Catches



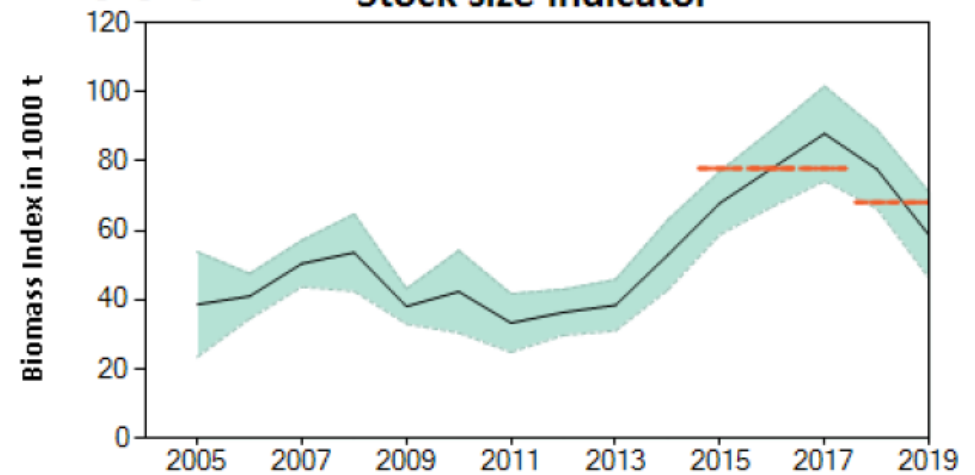
enf_27.3e46_2019_13221_2019101712

Harvest rate



enf_27.3e46_2019_13170_2019026112

Stock size indicator



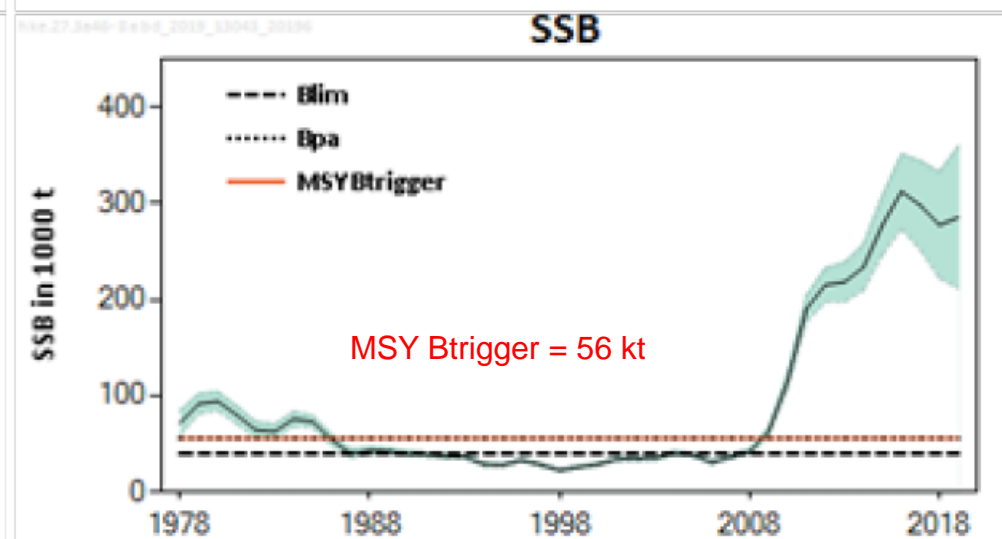
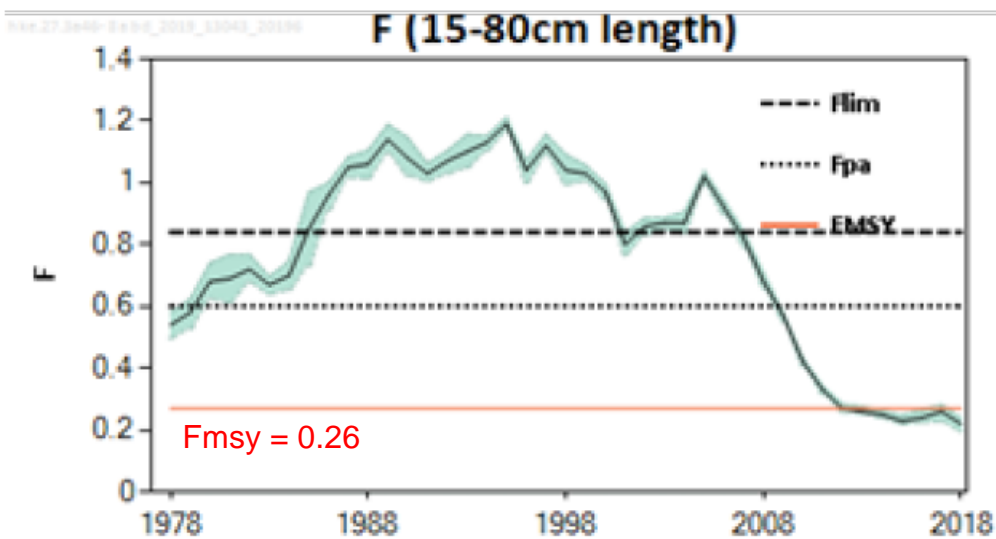
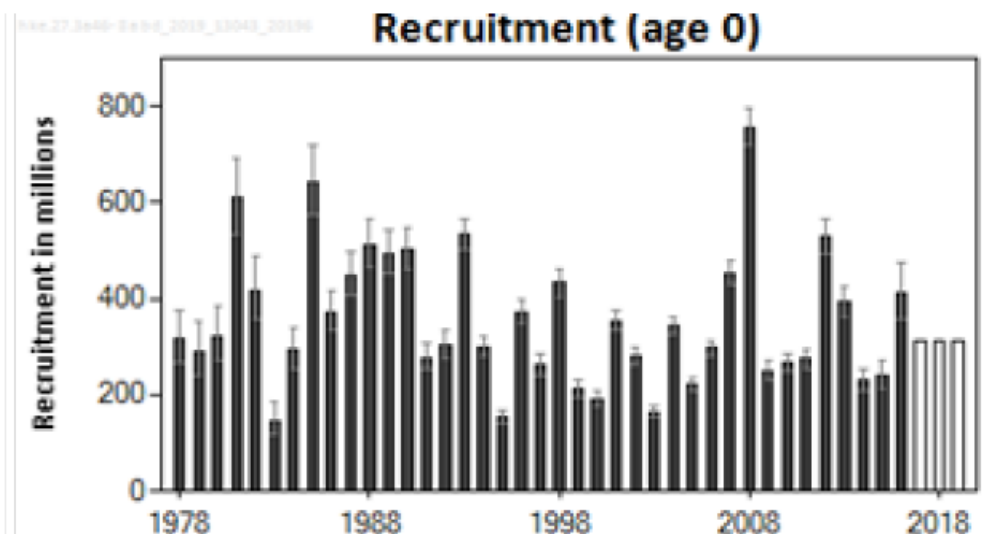
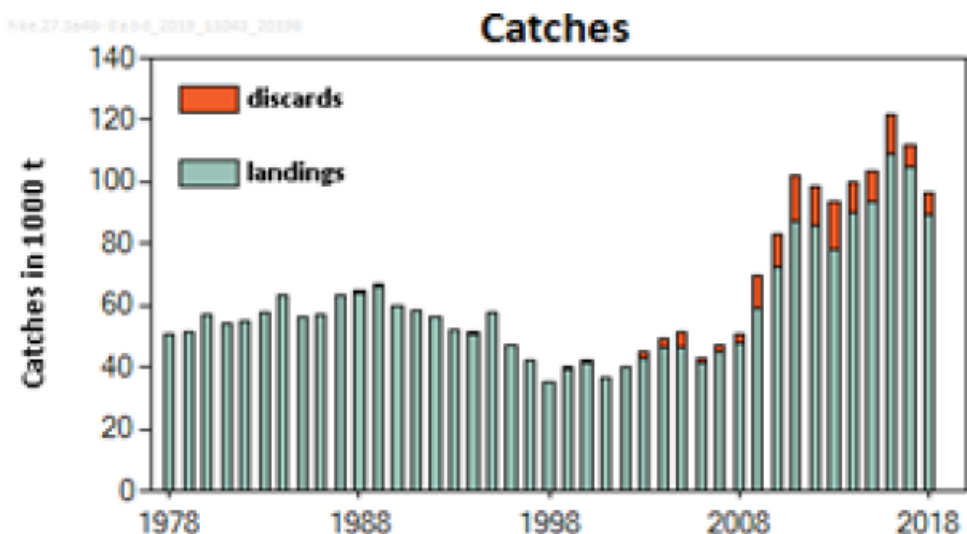
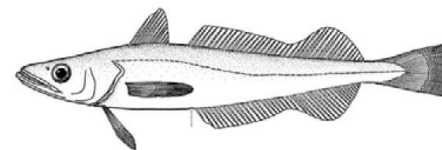
Northern Shelf monkfish: advice and TAC decision



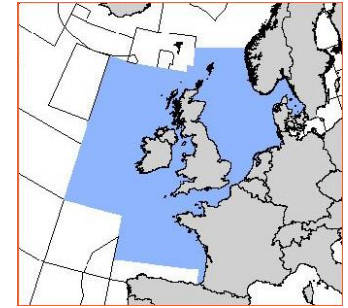
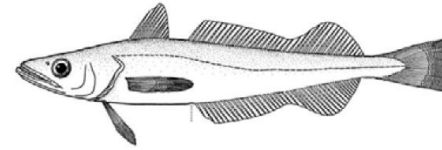
	Advice (4, 3a, 6)	% change from 2019 TAC	2020 TAC (4, 3a, 6)	% change from 2019 TAC
Total catch 2020	22 056	-30%	22 056	-30%
SSB 2021	Unknown			

- Data limited stock advice
- Additional precautionary reduction

NE Atlantic hake (Northern): summary



NE Atlantic hake (Northern): advice and TAC decision



	Advice	% change from 2019 advice	2020 TAC	% change from 2019 TAC
Total catch 2020	104 763	-26%	112 903	-21%
SSB 2021	263 204 (-5%)			

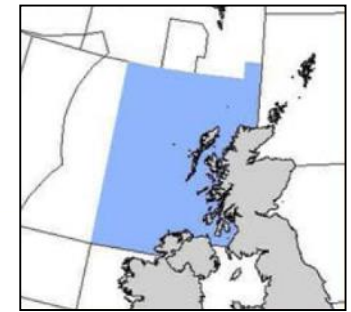
- MSY advice basis
- Advice lower than last year because of stock rescaling and reference point changes after interbenchmark meeting
- Key issue is stock distribution

West of Scotland demersal



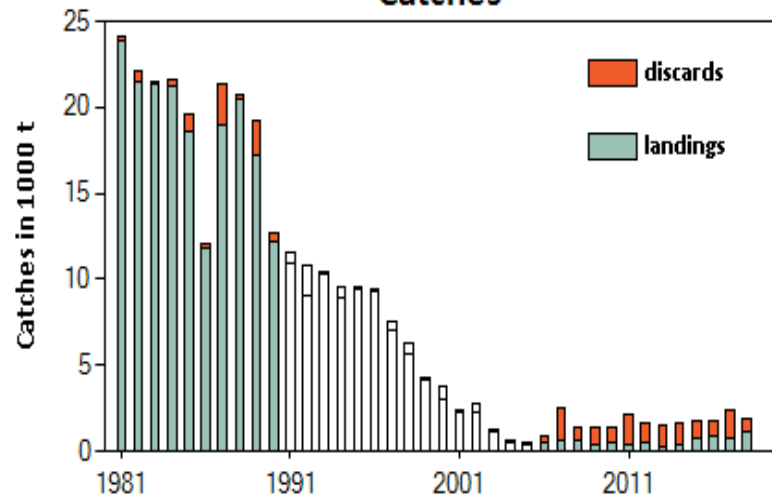
marinescotland
science

West of Scotland cod: summary



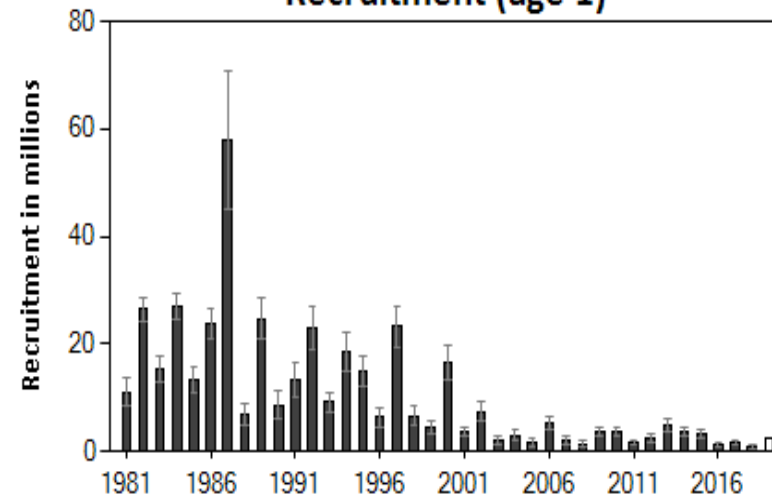
cod.27.6a_2019_12995_20196171532

Catches



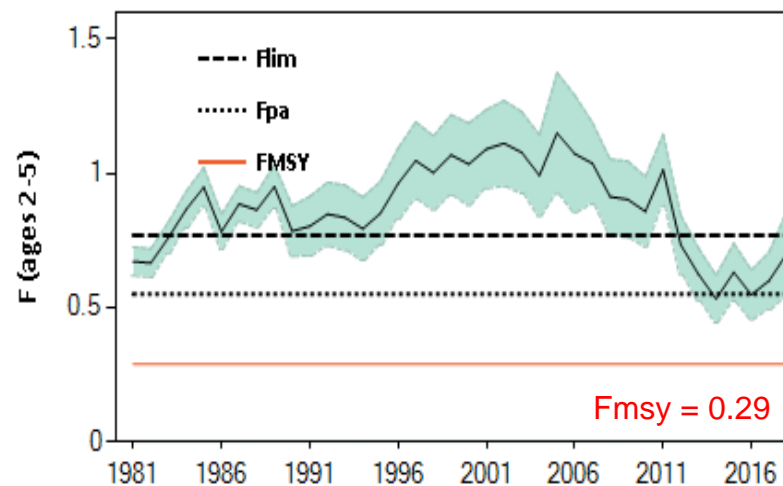
cod.27.6a_2019_12995_20196171532

Recruitment (age 1)



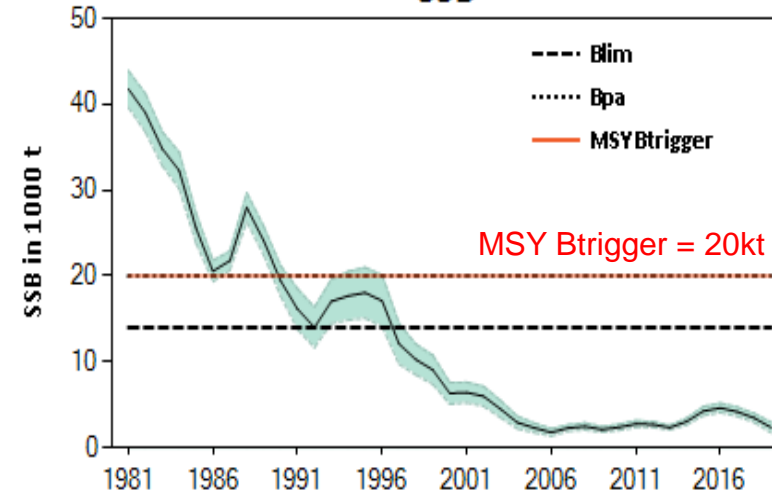
cod.27.6a_2019_12995_20196171532

F

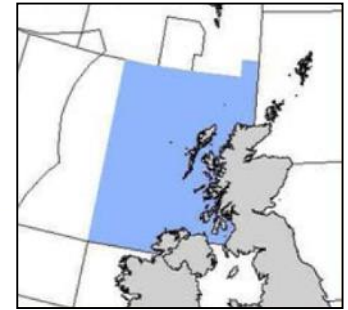


cod.27.6a_2019_12995_20196171532

SSB



West of Scotland cod: advice and TAC decision

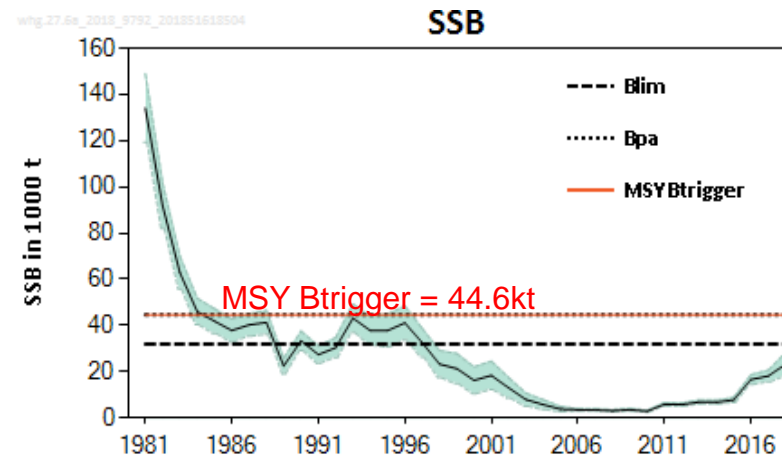
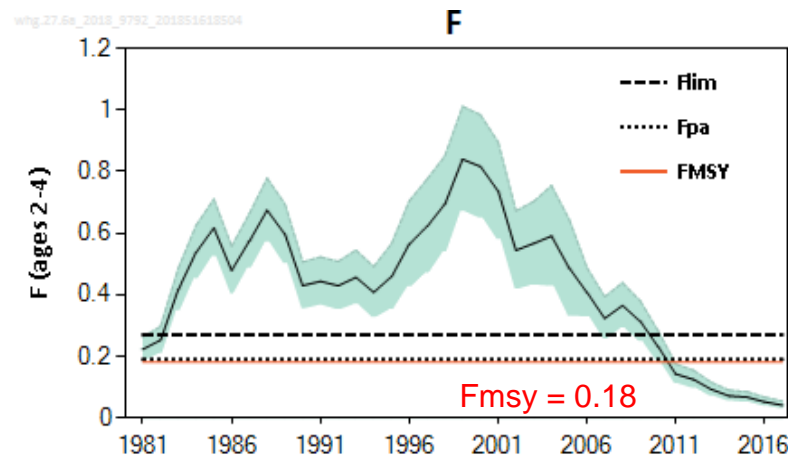
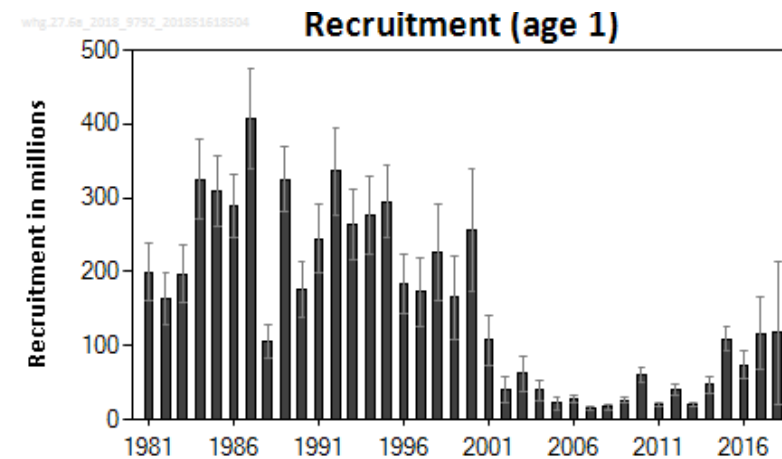
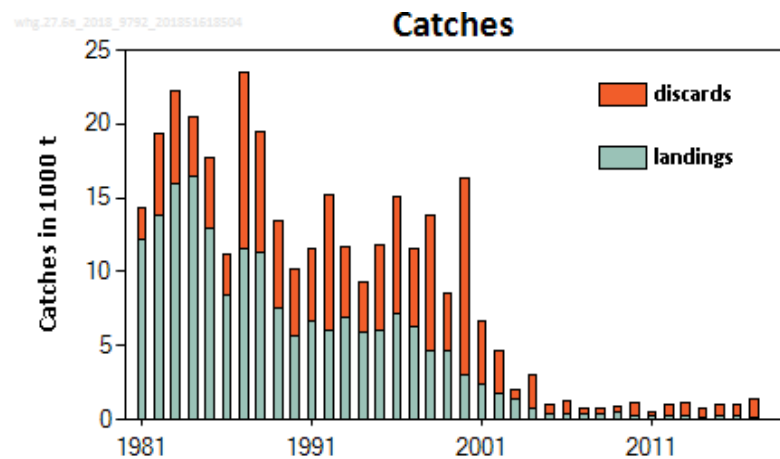
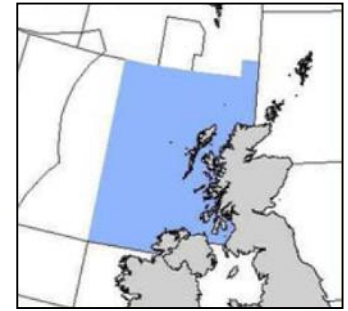


	Advice	% change from 2019 TAC	TAC 2020	% change from 2020 TAC
Total catch 2020	Zero catch	-100%	1 279	-26%
SSB 2021	3 765 (+87%)			

- Based on Nov 2019 ICES special request advice minus 20% to encourage selectivity
- Biennial advice for 2020 and 2021
- Benchmark just concluded

West of Scotland whiting

- No new advice in 2019
- Biennial advice for 2019 and 2020
 - Zero catch



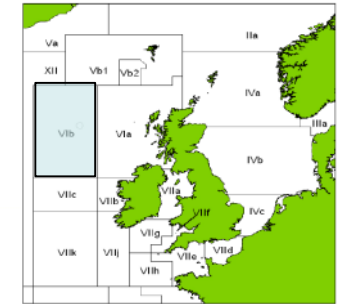
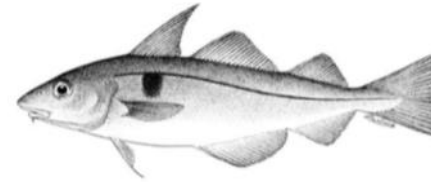
West of Scotland whiting: advice and TAC decision



	Advice	% change from 2019 TAC	TAC 2020	% change from 2020 TAC
Total catch 2020	Zero catch	-100%	937	-16%
SSB 2021	24 239 (-9%)			

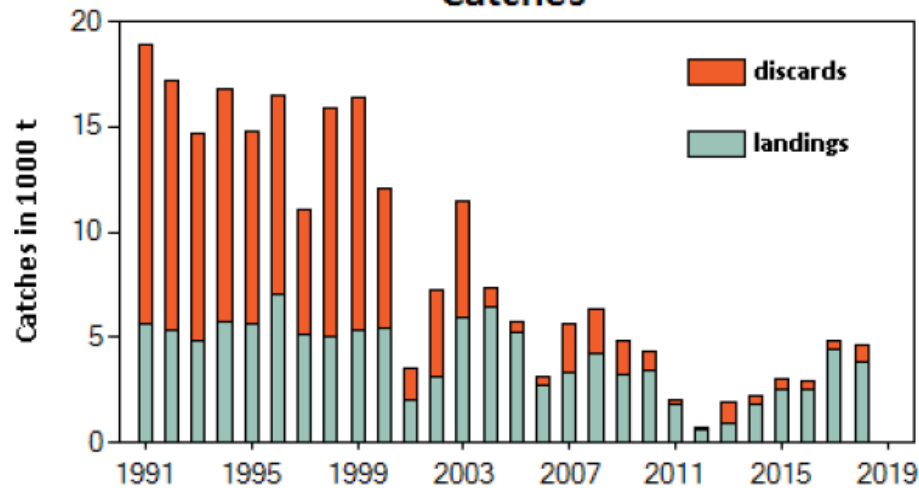
- Based on Nov 2019 ICES special request advice minus 20% to encourage selectivity
- Biennial advice for 2020 and 2021
- Benchmark just concluded

Rockall haddock: summary



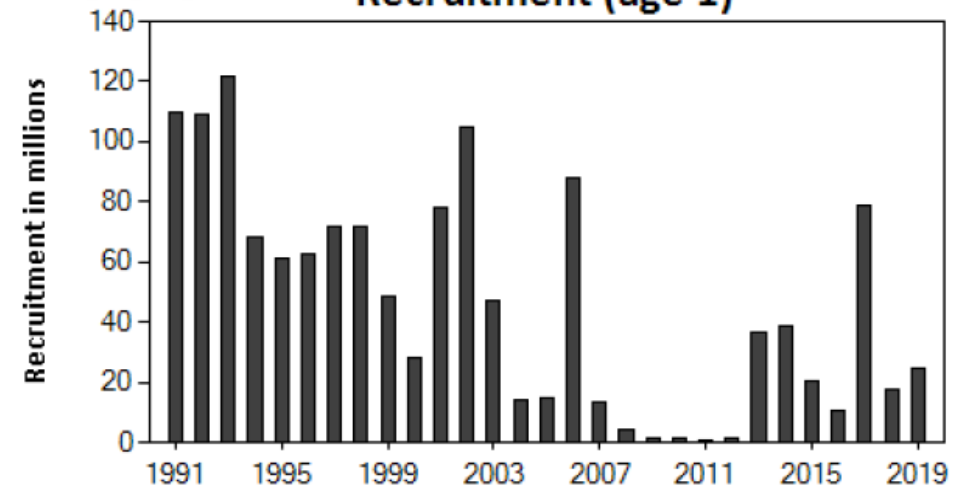
hed.27.6b_2019_13108_20199101731

Catches



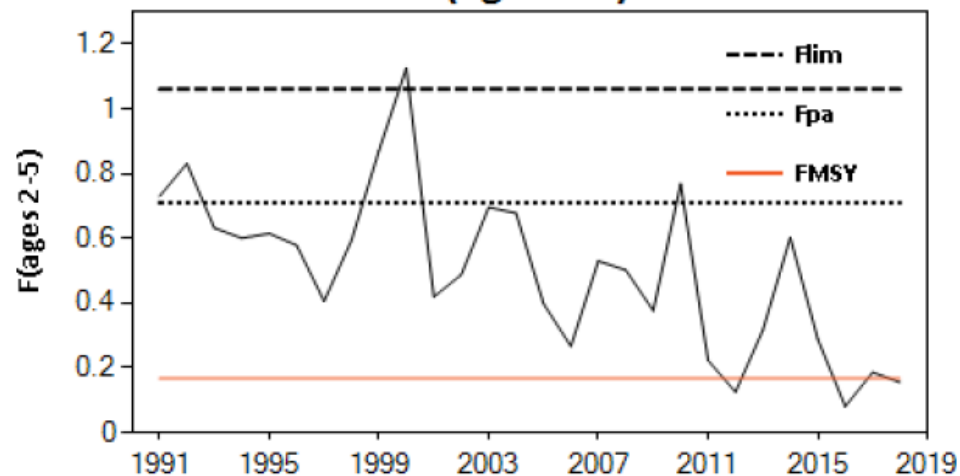
hed.27.6b_2019_13108_20199101731

Recruitment (age 1)



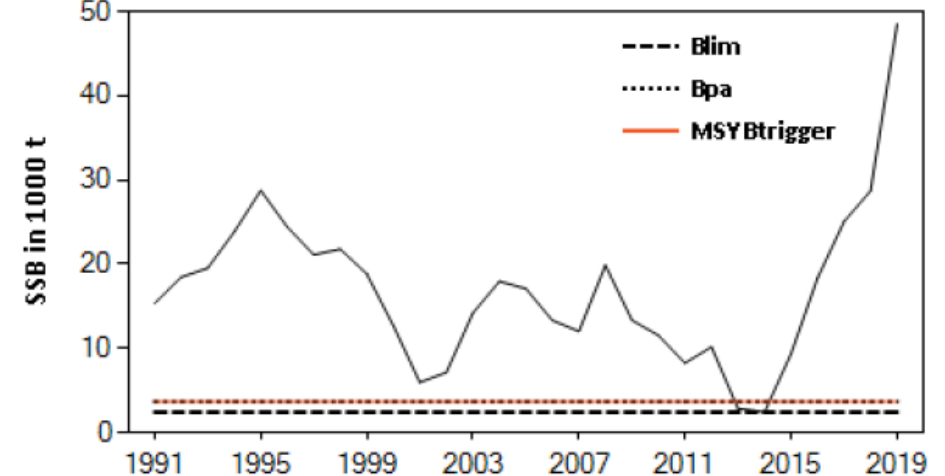
hed.27.6b_2019_13108_20199101731

F(ages 2-5)

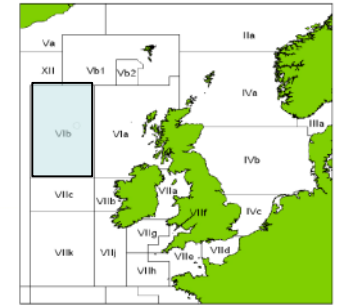
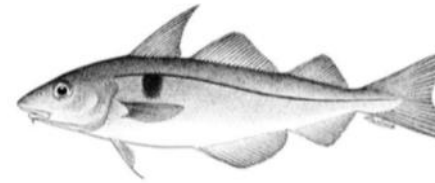


hed.27.6b_2019_13108_20199101731

SSB



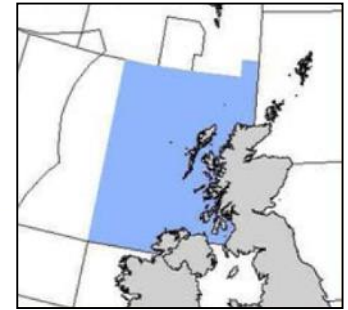
Rockall haddock: advice and TAC decision



	Advice (4, 3a, 6a)	% change from 2019 TAC	2020 TAC (4, 3a, 6a)	% change from 2019 TAC
Total catch 2020	10 472	0%	10 472	0%
SSB 2021	196 886 (-3.5%)			

- MSY advice basis

West of Scotland *Nephrops*: advice and TAC decision



	Advice (6a)	% change from 2019 TAC	2020 TAC (6a)	% change from 2019 TAC
Total catch 2020	16 601	+10%	15 899	+5%
SSB 2021	Unknown			

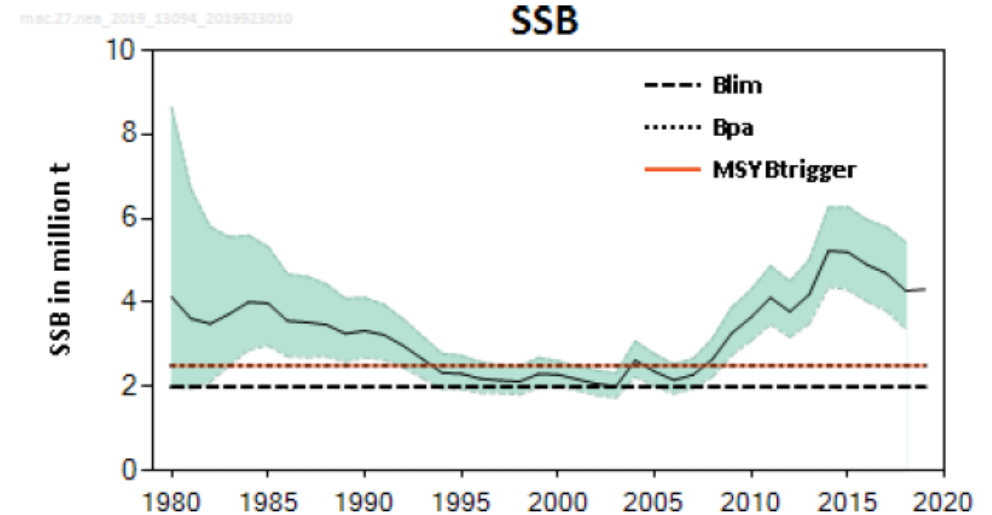
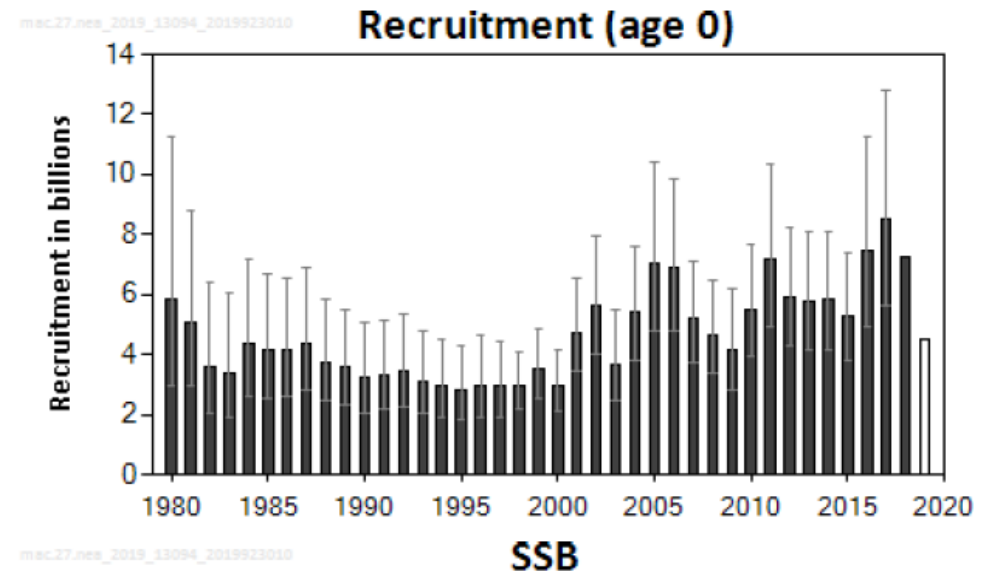
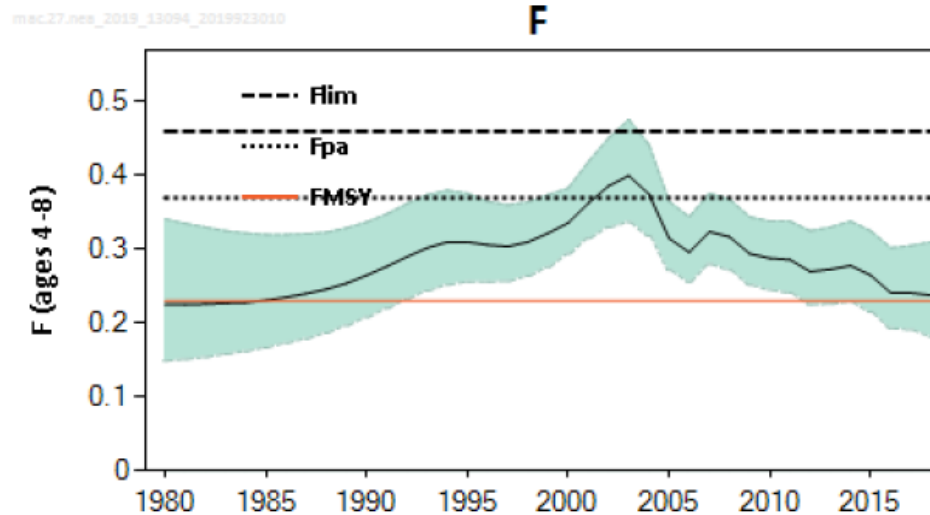
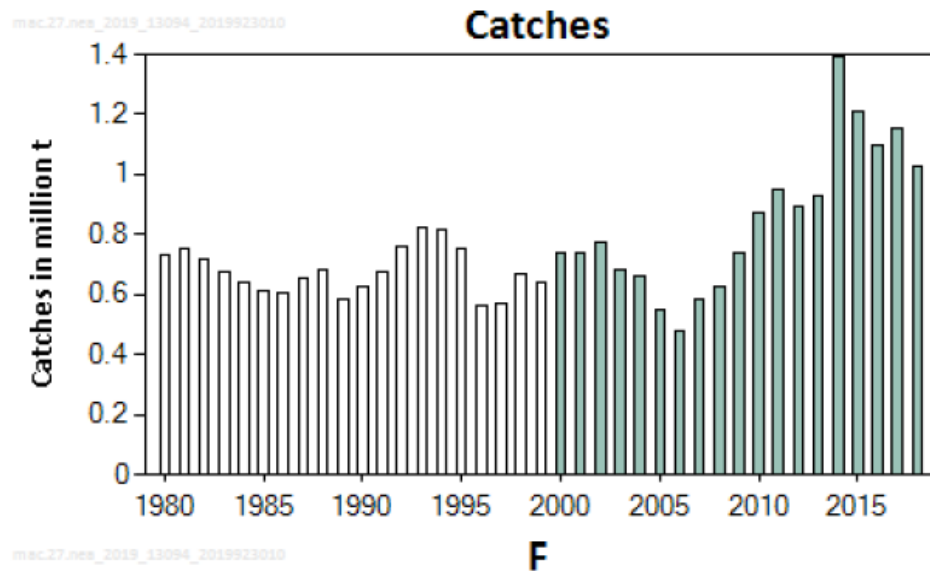
- MSY advice basis
- TAC increase limited by survivability discard exemption

Pelagic



marinescotland
science

Atlantic mackerel: summary



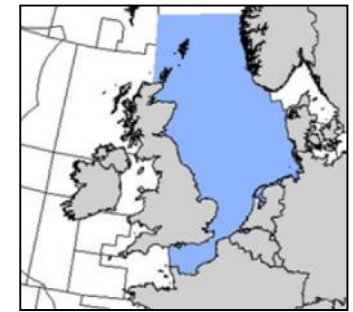
Atlantic mackerel: advice and TAC decision



	Advice	% change from 2019 TAC	TAC 2020	% change from 2020 TAC
Total catch 2020	922 064	+41%	922 064	+41%
SSB 2021	4 390 097 (-3%)			

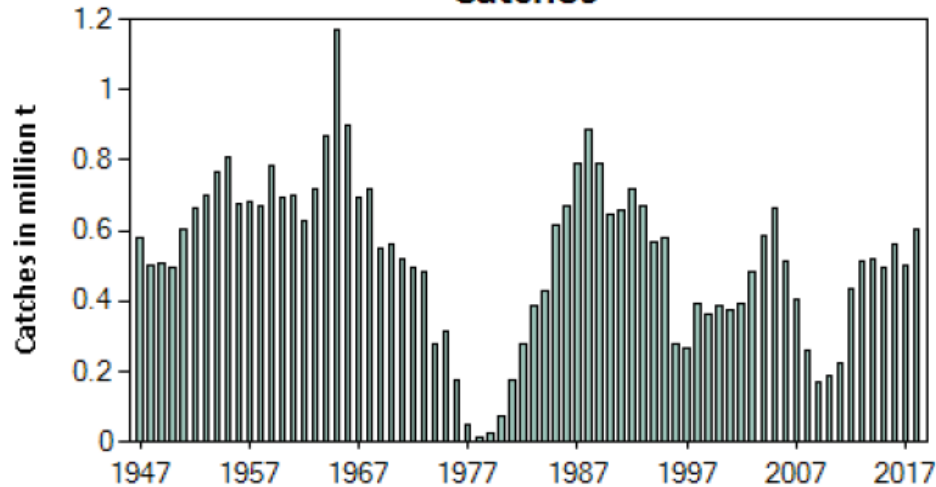
- MSY approach basis

North Sea herring: summary



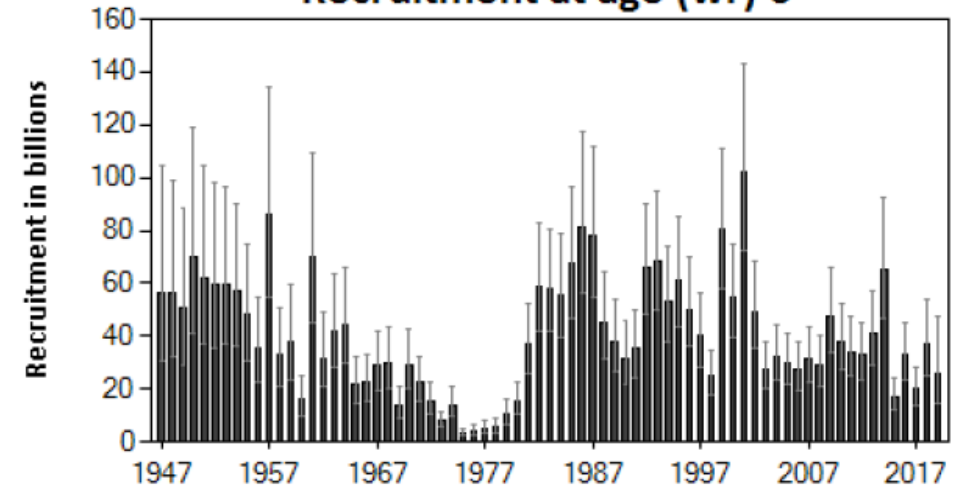
her:27.3e47d_2019_10365_201958102

Catches



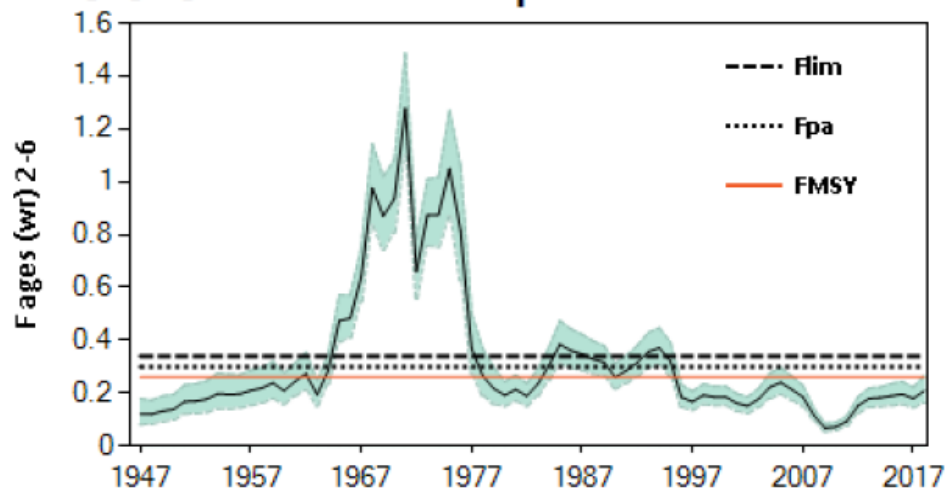
her:27.3e47d_2019_10365_201958102

Recruitment at age (wr) 0



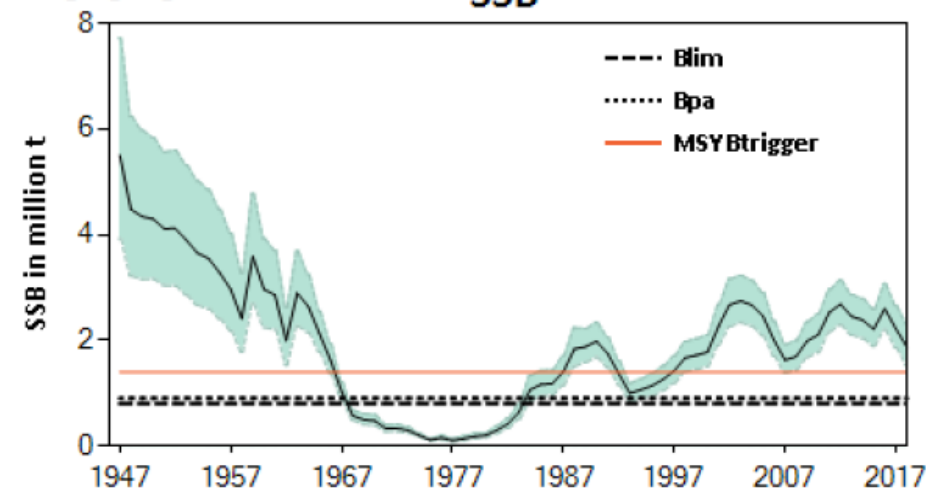
her:27.3e47d_2019_10365_201958102

F

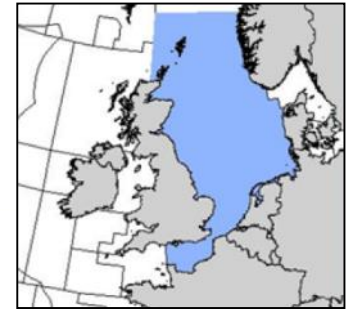


her:27.3e47d_2019_10365_201958102

SSB



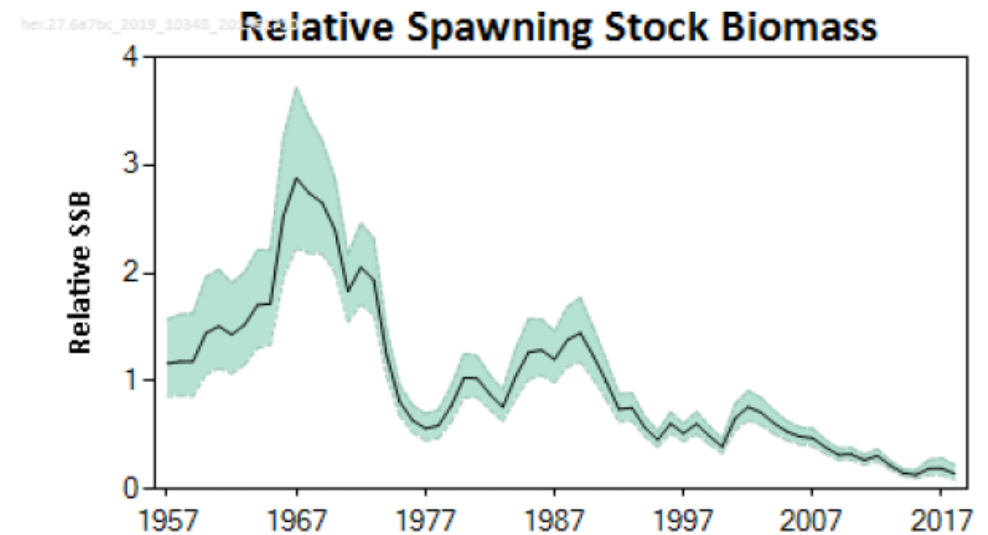
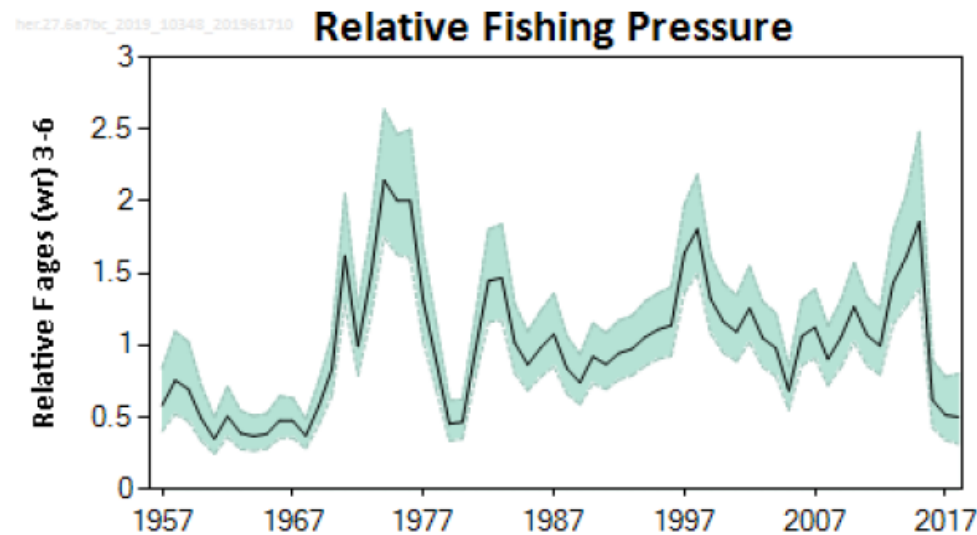
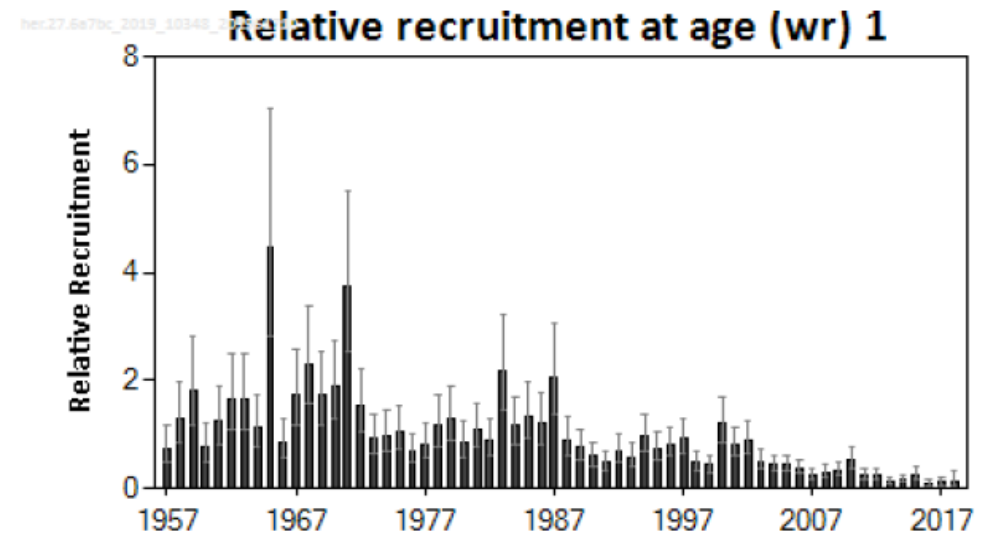
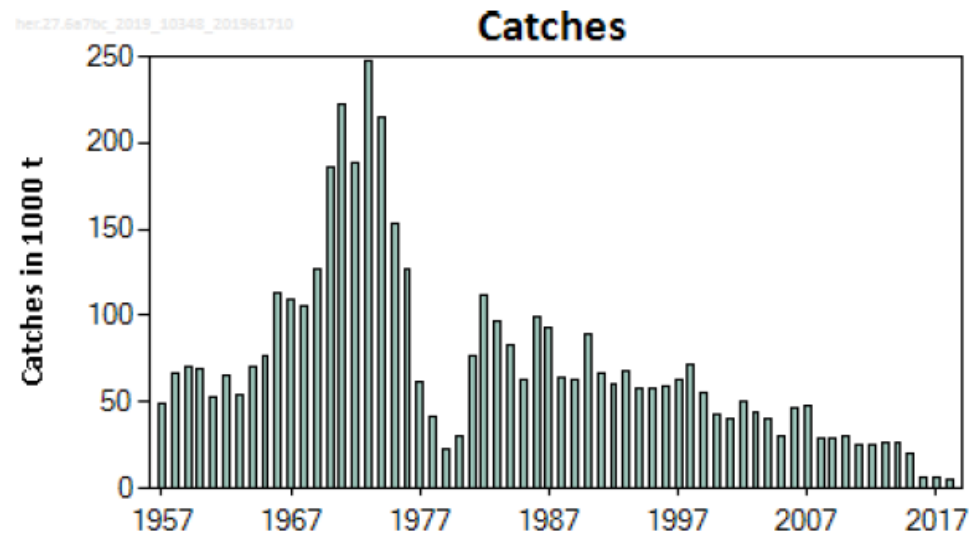
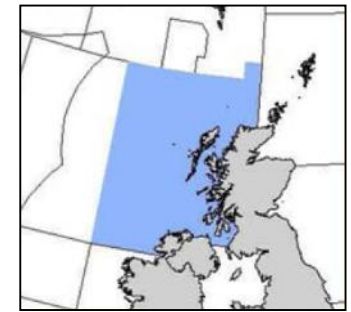
North Sea herring: advice and TAC decision



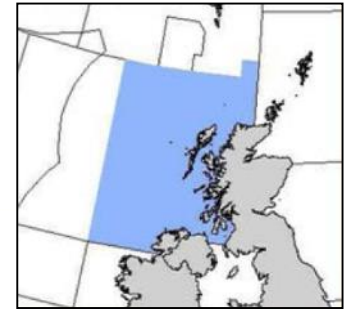
	Advice	% change from 2019 TAC	TAC 2020	% change from 2020 TAC
Total catch 2020	431 062	+38.4%	385 008	0%
SSB 2021	1 167 712 (-15.8%)			

- MSY approach basis
- TAC limited to rollover as this will limit impact on SSB

West of Scotland herring: summary



West of Scotland herring: advice and TAC decision



	Advice	% change from 2019 TAC	TAC 2020	% change from 2020 TAC
Total catch 2020	Zero catch	-100%	3 480	-17%
SSB 2021	Unknown			

- MSY approach basis
- Small TAC permitted for scientific monitoring purposes only

Category	Stock	Advice	% change from 2019 TAC	2020 TAC	% change from 2019 TAC
North Sea demersal	Cod	13 686	-62%	14 718	-50%
	Whiting	15 036	-12.5%	17 158	0%
	Plaice	166 499	+17%	166 499	+17%
	<i>Nephrops</i>	24 755	+12%	23 002	+4%
Northern Shelf and widely distributed demersal	Haddock	41 818	+23%	41 818	+23%
	Saithe	88 093	-15%	88 093	-15%
	Monkfish	22 056	-30%	22 056	-30%
	Northern hake	104 763	-26%	84 756	-21%
West of Scotland demersal	Cod	Zero catch	-100%	1 279	-26%
	Whiting	Zero catch	-100%	937	-16%
	Rockall haddock	10 472	0%	10 472	0%
	<i>Nephrops</i>	16 601	+10%	15 899	+5%
Pelagic	Mackerel	922 064	+41%	922 064	+41%
	NS herring	431 062	+38%	385 008	0%
	WS herring	Zero catch	-100%	3 480	-17%