

# NESFDP – BREXIT UPDATE

10 February 2017

[www.sff.co.uk](http://www.sff.co.uk)

# Review of Brexit Key Points

- The default position under International Law – return of control of fishing in the UK EEZ
  - Confirmed by independent legal opinion
- Where, and by whom, are the fish actually caught?
  - NAFC study using ICES data
  - Additional NAFC study

/cont

- Where do the fish spawn, live, swim and die?
  - Independent study by Aberdeen University on “Zonal Attachment”
- Does our share of opportunity make sense?

# **ZONAL ATTACHMENT vs SHARES**

**Work Commissioned on Zonal Attachment  
Completed by**

**Paul Fernandes and Nial Fallon (Aberdeen  
University)**

**February 2017**

[www.sff.co.uk](http://www.sff.co.uk)

## The Spatial Distribution of Commercial Fish Stocks of Interest to Scotland in UK Waters



A report prepared by the University of Aberdeen for the Scottish Fishermen's Federation  
January 2017

Analysis of spatial distribution of 17 stocks of interest to Scotland.

Fishery Independent ICES Coordinated Trawl Surveys (2011-2015)

Comparisons made between percentage of fish stocks within the UK's EEZ (spatial percentage), and the percentage TAC allocated to the UK.

The percentages were reasonably stable throughout the analysis periods of 3 and 5 years (selected 5 year period for robustness).

For most stocks, the percentage of TAC allocated to the UK is much lower than the average percentage of the spatial distribution in the UK.

When the uncertainty associated with survey data is considered:

- allocations for 2 stocks are greater than spatial distribution
- allocations for 3 stocks are in line with spatial distribution
- allocation for 12 stocks are less than spatial distribution

## Summary Table.

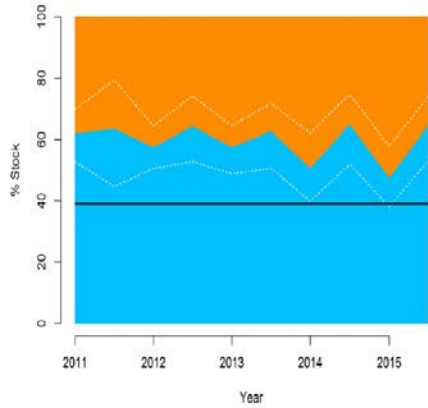
Comparison of the UK's quota allocation (%TAC) of stocks of importance to Scotland with the spatial percentage, expressed as the **average percentage** of the stock in UK waters over 5 years.

*nb: This presentation does not take into account the levels of uncertainty associated with the model.*

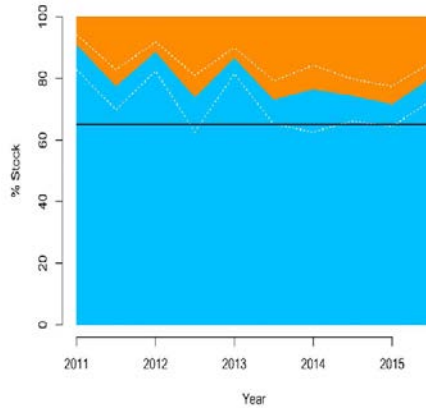
| Region           | Species              | UK quota (% TAC) | Average percentage in UK EEZ (%) over 5 years | Difference from average |
|------------------|----------------------|------------------|---|-------------------------|
| North Sea        | Herring (mature)     | 15               | 88  | -73                     |
|                  | Hake                 | 18               | 60  | -42                     |
|                  | Saithe               | 8                | 46  | -38                     |
|                  | Cod                  | 39               | 60  | -21                     |
|                  | Whiting              | 62               | 79  | -17                     |
|                  | Haddock              | 65               | 80  | -15                     |
|                  | Anglerfish           | 73               | 61  | 12                      |
|                  | Herring (immature)   | -                | 10  |                         |
| West of Scotland | Hake                 | 18               | 79  | -61                     |
|                  | Saithe               | 46               | 84  | -38                     |
|                  | Cod                  | 60               | 93  | -33                     |
|                  | Herring              | 60               | 87  | -27                     |
|                  | Whiting              | 57               | 83  | -26                     |
|                  | Haddock              | 76               | 87  | -11                     |
|                  | Anglerfish VIa & VIb | 31               | 68  | -37                     |
| Other            | Mackerel             | 23               | 36  | -13                     |
|                  | Rockall Haddock      | 78               | 56  | 22                      |

# North Sea Stocks

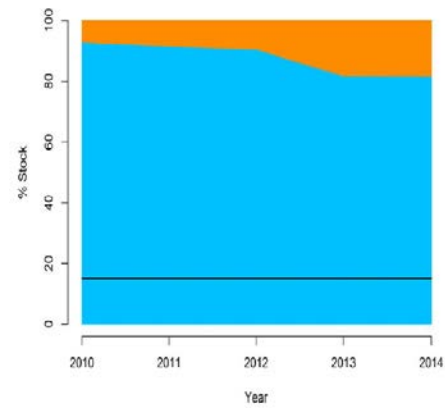
## Cod



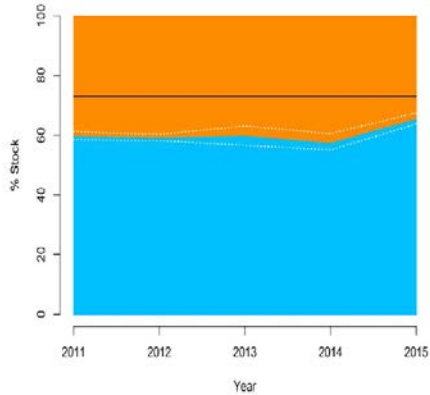
## Haddock



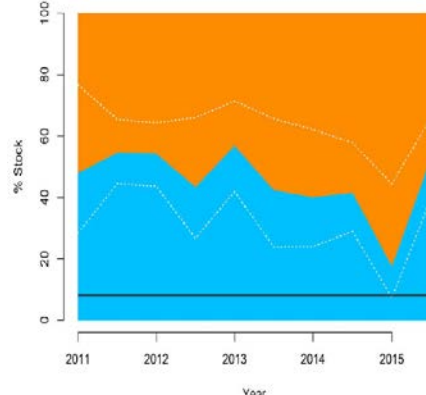
## Hake



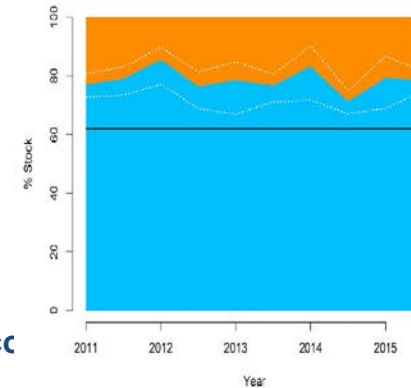
## Anglerfish



## Saithe



## Whiting

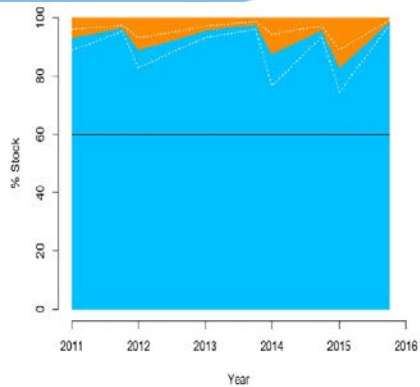


*White dotted line shows the upper and lower 95% quartile.*

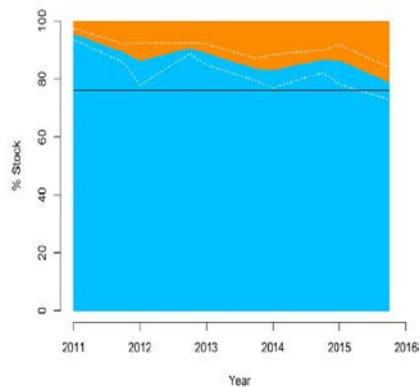
*Solid black line represents the UK TAC allocation.*

# West of Scotland Stocks

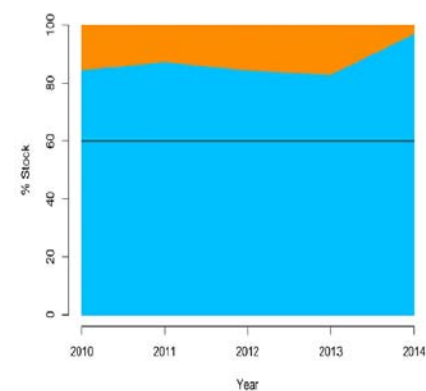
## Cod



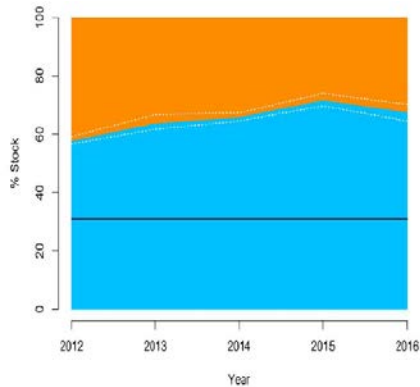
## Haddock



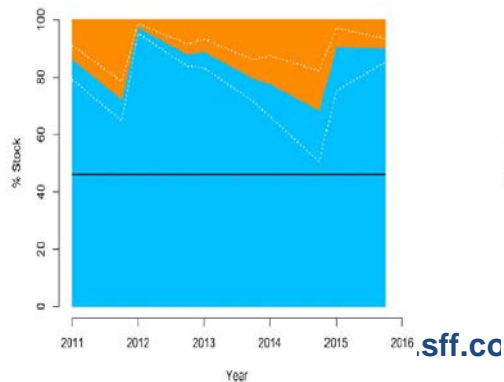
## Hake



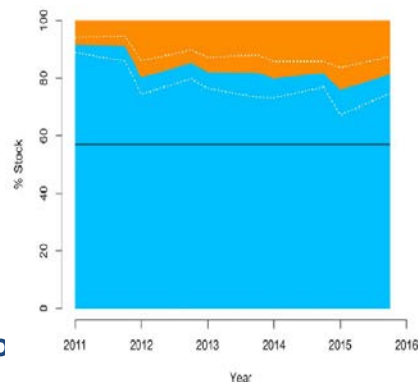
## Anglerfish



## Saithe



## Whiting



*White dotted line shows the upper and lower 95% quartile.*

*Solid black line represents the UK TAC allocation.*



# The Way Ahead

- Acceptance of concept – our resource
- Fit for purpose management – Great Repeal Bill
- Undiluted commitment to the Sea of Opportunity

## What won't change?

- Central role of science – ICES advice
- Sustainability
- Environmental protection

# Challenges

- Commitment by UK Governments to a favourable outcome for UK fishing
- Period of market change
- Manpower resources

# The Bottom Line

Opportunities outweigh the challenges: fit-for-purpose management of increased opportunity will present the required solutions.

But, not without work and commitment