

Park Smart

Parents/Carers Pledge



.....

Primary School believes that traffic congestion and inappropriate parking around the school is creating a road safety risk for pupils and adults.

The school is using the Park Smart programme to help keep children, parents/carers and school staff safe when they come and go from the school. Every child and adult has the right to get to and from the school without the actions of others putting their safety at risk. Please don't be the person that creates a risk for you, your own child, or for others.

Children are at particular risk as they:

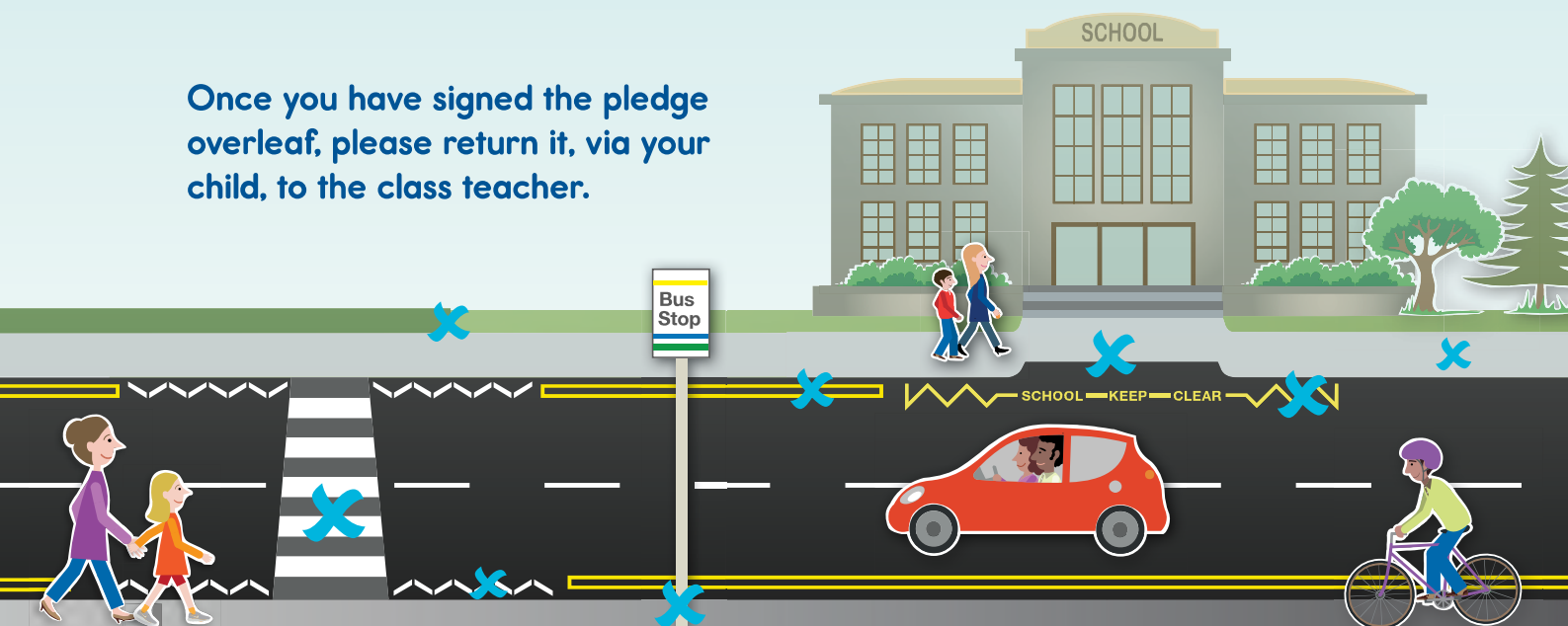
- Are less able to make safe choices
- Cannot judge speed and distance as well as adults
- Will generally take the shortest route, even if this is not the safest
- Find it more difficult to see, or be seen, around parked cars.

Work by staff within the school is seeking to educate pupils about these risks.

This pledge has been produced by Primary School in partnership with the Parent Council. The pledge asks all those that drive to the school, be they staff or parents/carers, to act to do what they can to reduce the risks to others. If you drive to the school, even only occasionally, we want you to sign the pledge and to take action, every time you drive.

-----tear-off slip-----

Once you have signed the pledge overleaf, please return it, via your child, to the class teacher.



Primary School

Park Smart Parents/Carers Pledge

1. I will consider whether I need to drive before making the journey to school by car and use alternatives if I can
2. If I am driving to school I will make the time to park in a sensible and safe location
3. I will park or wait legally. I know it is my responsibility to know the law, and avoid parking or waiting in any restricted place – yellow lines, zig zag markings, etc.
4. I will also park or wait responsibly. I will not park or wait in locations where pupils need to cross roads, blocking people's driveways, on pavements, grass verges or at bus stops
5. I understand that I may need to walk a short distance from an appropriate place to park to the school gate
6. I will encourage any other person who is involved in taking my child to school to follow the statements given in this pledge.

Be part of the solution... not part of the problem

If you have questions about the pledge, or about traffic or parking around the school, please talk to the head teacher.

ParkSmart seeks to support a move towards a safer school gate environment for all members of the school community.

-----tear-off slip-----

I [name of parent/carer]

have read and understood the

Primary School Park Smart pledge and will follow its guidance every time I come to or from the school:

Signed

Date

Pupil's class