

# Park Smart Homework 3 (P1-P3)

"Note to Parents"

## Why Park Smart?

Children are at particular risk from traffic and badly parked cars as they:

- Are less able to make safe choices
- Cannot judge speed and distance as well as adults
- Will generally take the shortest route, even if this is not the safest
- Find it more difficult to see, or be seen, around parked cars

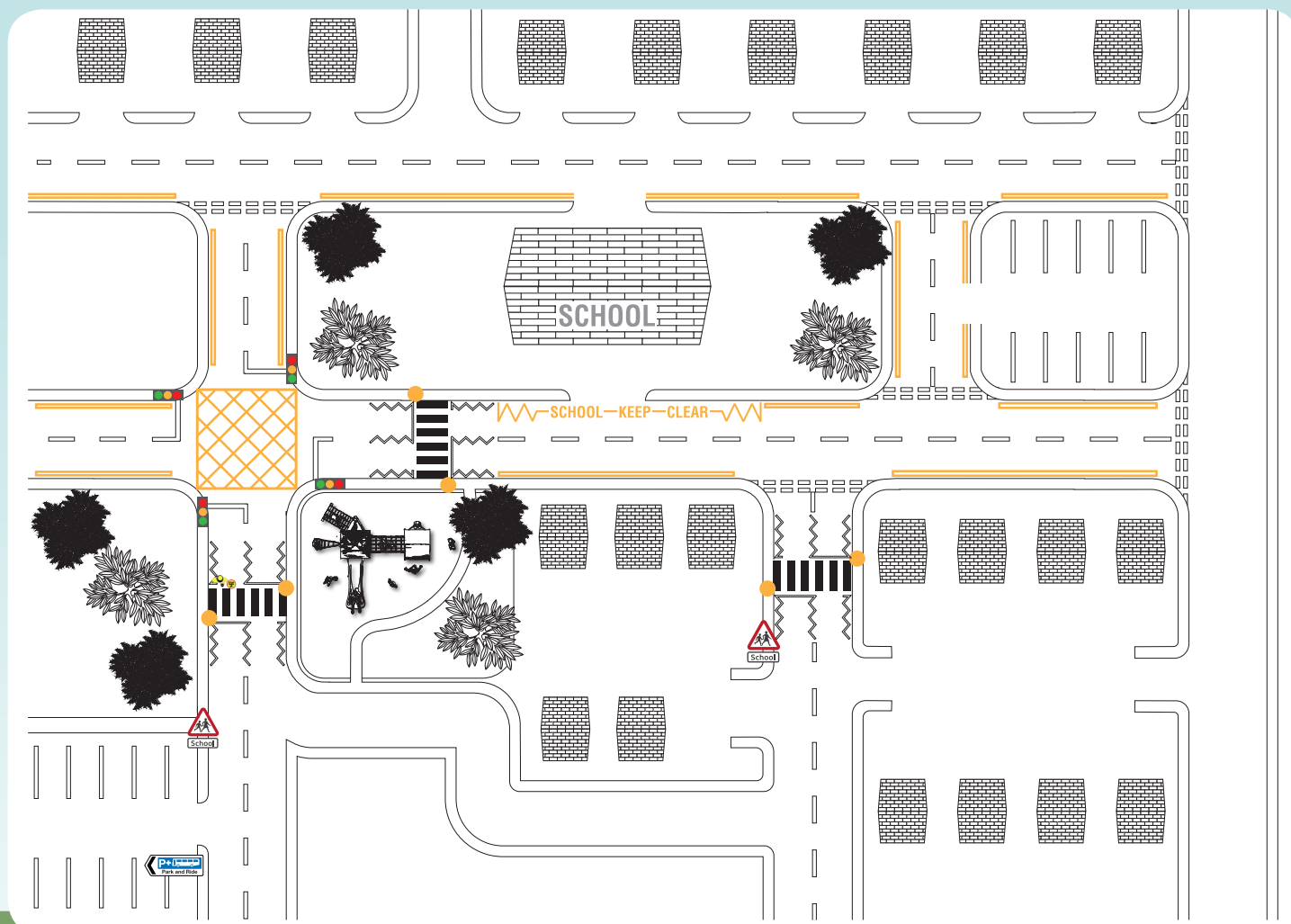
## Homework instructions:

Look at the map below of a school and the streets around it. Put a red cross on every part of the streets where it would be dangerous for a car to park while the driver took a child to or from school.

If you can, ask an adult to help you decide which places are dangerous.

Remember that cars should never park or wait:

- On school zig-zag markings
- On yellow lines
- On footways
- In locations where pupils need to cross roads
- Across drop kerbs
- On street corners
- Blocking people's driveways
- On grass verges
- At bus stops



SCHOOL — KEEP — CLEAR

**Every child and adult has the right to get to and from the school without the actions of others putting their safety at risk.**