



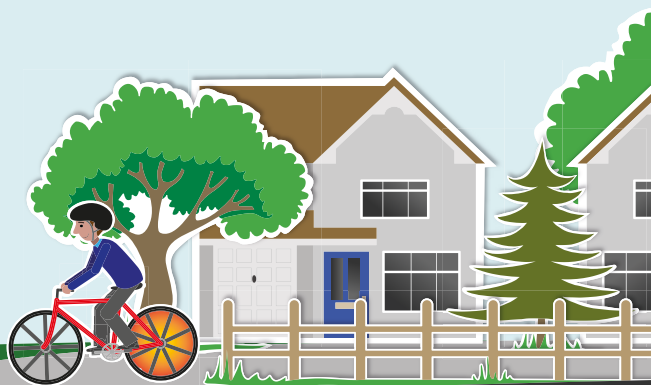
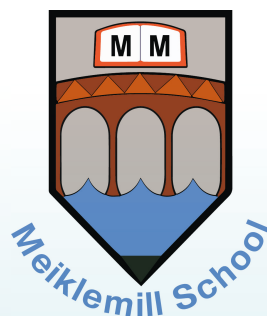
From mountain to sea

Aberdeenshire  
COUNCIL



# Cycle and Scoot to School Passport

Meiklemill Primary School





## This is the **CYCLE and SCOOT to SCHOOL** passport for

I will wear something bright or reflective when I cycle or scoot to school

I will always wear a helmet when I cycle or scoot to school

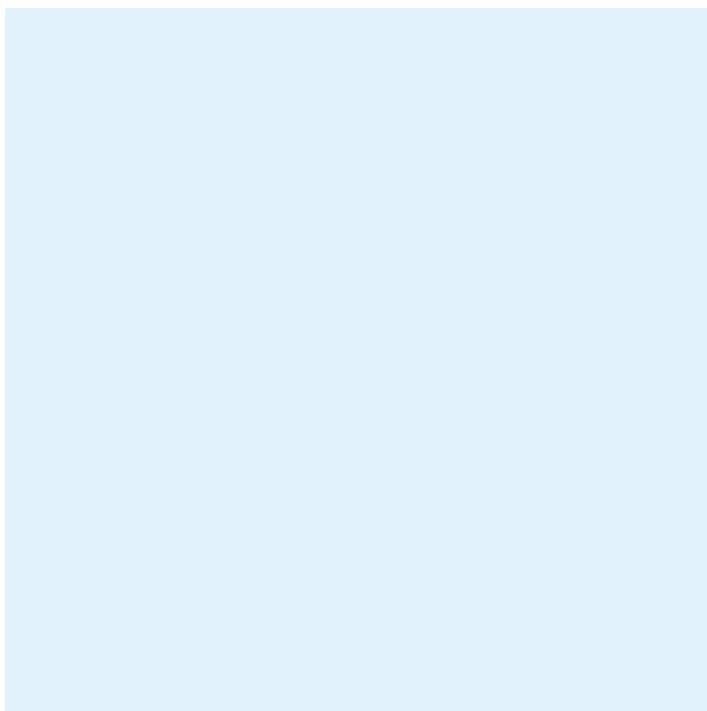
I will make sure that my bike or scooter is in safe condition

I will take part in Bikeability during P5,P6 or P7

I will park my bike or scooter in the racks provided

I will not cycle or scoot in the playground

I will use the safest route to and from school and think about other peoples safety too



**I have read the information opposite and agree**

Signature      Pupil . . . . .

Parent . . . . .

Date . . . . .

**Made by: P7 Junior Road Safety Officers  
Meiklemill Primary School**

