



Aberdeenshire
Health & Social Care
Partnership

The Aberdeenshire Health and Social Care Partnership

An Introduction to Decision Making

August 2019



Contents

1	Aberdeenshire Health and Social Care Partnership	3
2	The Integration Joint Board	5
3	Strategic Planning Group	6
4	How we make decisions	7
5	Further Information	9

1 Aberdeenshire Health and Social Care Partnership

The Aberdeenshire Health and Social Care Partnership was launched on April 1st 2016 in response to the Public Bodies (Joint Working) (Scotland) Act in 2014. The purpose of this act was to integrate health and social care for adults.

The Partnership has responsibility for a very broad and complex range of health and social care services across a wide geographical area, covering a total population of over 261,000 people.

The Partnership manages a budget of over £300 million, and a directly-employed workforce of over 4,000 staff. Care is planned and delivered through integrated multi-disciplinary teams working across 20 localities to ensure locally responsive services based on local need.



Aberdeenshire Health and Social Care Partnership is one of three in the Grampian area. The others are Aberdeen City and Moray. We host the management of some health services which are Grampian wide, including; health care services within Her Majesty's Prison (HMP) & Youth Offender Institute (YOI) Grampian, forensic custody health care, and Marie Curie nursing services. A full list of the health and social care services and delegated function is set out in the [Integration Scheme](#) including, but not restricted to:

Adult Social Care Services

- Social care services for adults Care home provision
- Home care services
- Community mental health services
- Care and support for adults with physical and learning disabilities
- Carer support service
- Adult support and protection Alcohol and other drug services
- Community based Allied Health Professions
- Aids and adaptations for homes Supported accommodation Health improvement services Telecare
- Criminal Justice

Community Health Services

- Primary care services
- General Practices (GPs)
- Community pharmacists
- Optometry services
- Dental services
- Community hospitals
- Minor injury units
- Public health services
- Health visitors
- School nurses
- Vaccination programme
- Pharmacotherapy services
- Community link workers

We recognise the Third Sector's important role in providing a diverse range of preventative and specialist services. Aberdeenshire Voluntary Action (AVA) provides the Third Sector Interface (TSI) which is the main conduit between the Third Sector and the Partnership. The Third Sector brings great value through its flexibility, innovation and the active engagement with communities and individuals in the design and delivery of services.

2 The Integration Joint Board

The Partnership is overseen by a joint board of Aberdeenshire Council and NHS Grampian, called the Integration Joint Board (IJB). The IJB manage adult health and social care services in Aberdeenshire. The board consists of five Aberdeenshire Councillors and five NHS Grampian Board members. There are also non-voting members of the board which include council and NHS officers as well as representatives from carers groups, trade unions and the third sector.

The Partnership is jointly accountable to the NHS Grampian Board and to Aberdeenshire Council. The Partnership's Chief Officer reports to both Chief Executives.

IJB membership must include people who can represent the views of those using the services and unpaid carers. These representatives are stakeholder members of the IJB. This means they are able to comment on and influence decision making, but are a non-voting member.

You can find out more about the IJB including the current board membership by visiting our website <https://www.aberdeenshire.gov.uk/social-care-and-health/ahscp/integration-joint-board/>



3 Strategic Planning Group

The Public Bodies (Joint Working) (Scotland) Act 2014 and subsequent national guidance required all Integration Joint Boards (IJB) to set up a Strategic Planning group.

The role of the Strategic Planning Group (SPG) is to develop and finalise the strategic plan and to continue to review progress, measured against the statutory outcomes for health and wellbeing and associated indicators.

The SPG oversee the development and monitoring of the Partnership's Strategic Plan and Strategic Commissioning Plan. The SPG also provide a reporting structure for;

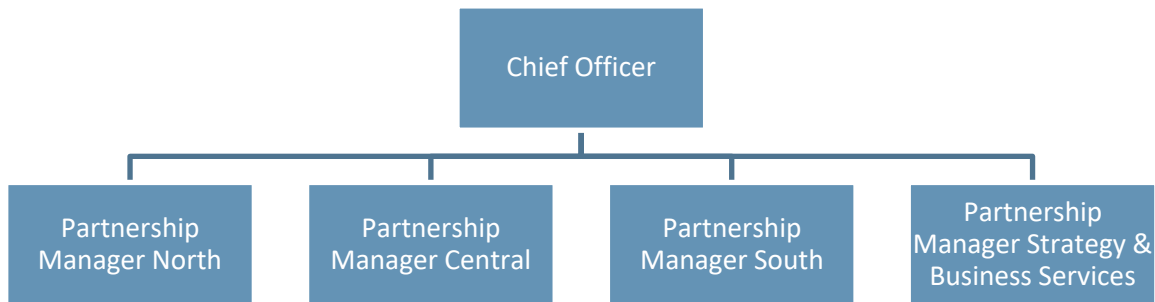
- Mental Health Strategic Action Group
- Learning Disability, Autism, Carers, Dementia, Physical Disability and Independent Living Strategic Outcomes Groups
- Alcohol and Drug Partnership
- Older People's Forums (hosted by AVA)

Membership of the Strategic Planning Group includes staff members nominated by the Local Authority and the Health Board. In addition, the Strategic Planning Group should include Stakeholder Members and this includes users of health and social care and their carers.



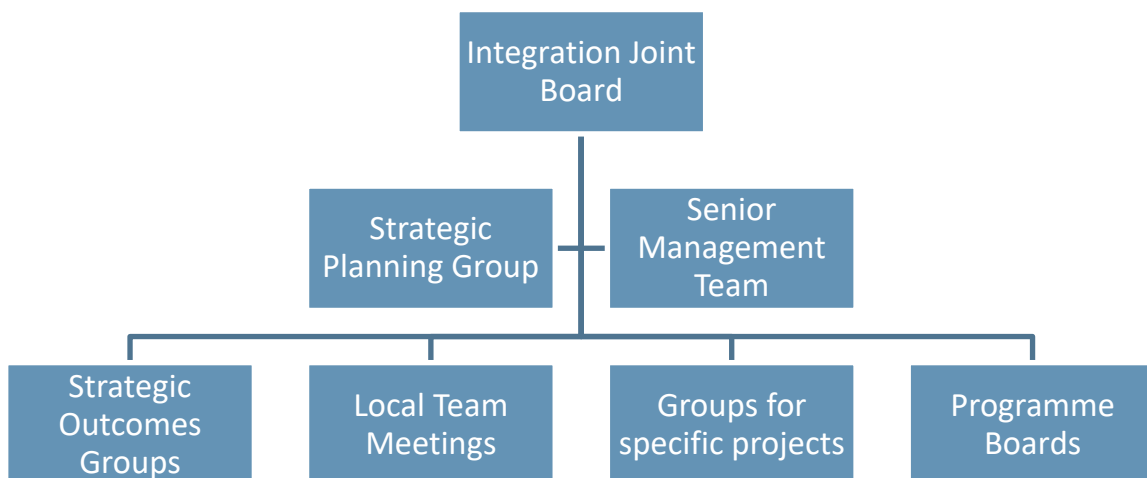
4 How we make decisions

The ultimate decision making for the Aberdeenshire Health and Social Care Partnership sits with the Integration Joint Board. Underneath the IJB we have a management structure which supports a local approach to service delivery. This enables us to take account of the unique characteristics and needs of the different areas of Aberdeenshire and deliver services in a responsive manner.



Under each partnership manager sit managers with responsibility for specific geographies eg (Location Managers) services (eg Mental Health & Learning Disability Managers) and business functions (eg Strategy & Commissioning).

In order to inform the decisions made by the board and to make some decisions at an operational level we have a structure of groups and boards which meet to progress the partnership's strategies and strategic priorities and make decisions on local service delivery.



Information on each of these groups/boards is below;

Integration Joint Board

Ultimate decision making and monitoring body for the Partnership.

Strategic Planning Group

Responsible for delivery and monitoring of the strategic plan and commissioning plan.

Senior Management Team

First point for decisions that will impact across Aberdeenshire and therefore cannot be made at a local level. IJB papers will be ran by SMT before going to IJB.

Strategic Outcome Groups

Responsible for developing and monitoring the partnership's service specific strategies and promoting the interests of service users in wider decision making.

Local Team meetings

Chance for local teams to get together to consider local service delivery, identifying any areas of concern and working together to make improvements. Will make some decisions that effect only that area.

Groups for specific projects

Big pieces of work will have a working group formed to drive forward change. An example of this is a group that is working on the delivery model for very sheltered housing.

Programme Boards

Programme boards are linked to the partnership's priorities and monitor all the big projects which are driving the priorities in the strategic plans. Programme boards have an important role in monitoring progress and measuring performance in relation to the Partnersip's strategic priorities.



5 Further Information

Please use the links below if you would like to find out more;

Public Bodies Act

<https://www.legislation.gov.uk/asp/2014/9/contents>

Statutory Guidance and Advice

<https://www2.gov.scot/Topics/Health/Policy/Health-Social-Care-Integration/Statutory-Guidance-Advice>

Aberdeenshire HSCP

<https://www.aberdeenshire.gov.uk/social-care-and-health/health-and-social-care-integration/>

Aberdeenshire Health and Social Care Partnership Strategic Plan

<https://www.aberdeenshire.gov.uk/media/16182/health-and-social-care-strategic-plan-march-2016-final.pdf>

Information on the Aberdeenshire Integration Joint Board

<http://committees.aberdeenshire.gov.uk/committees.aspx?commid=486>
