

Peterhead Ugieside

Intermediate Zone Statistical Summary

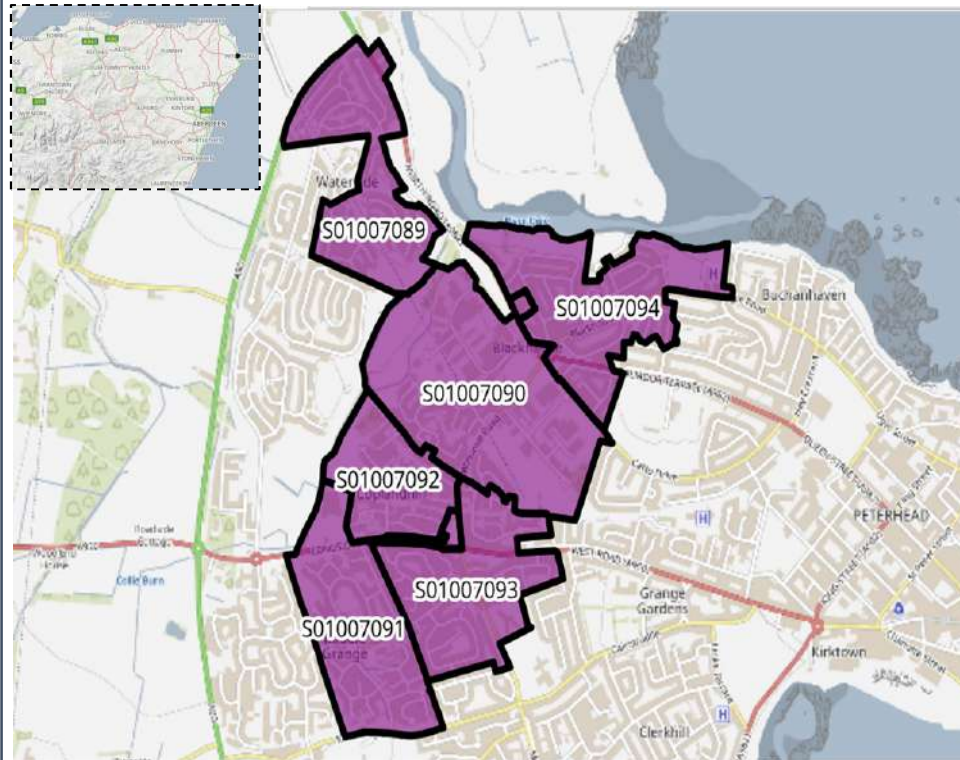
2023

Daniel Stanford

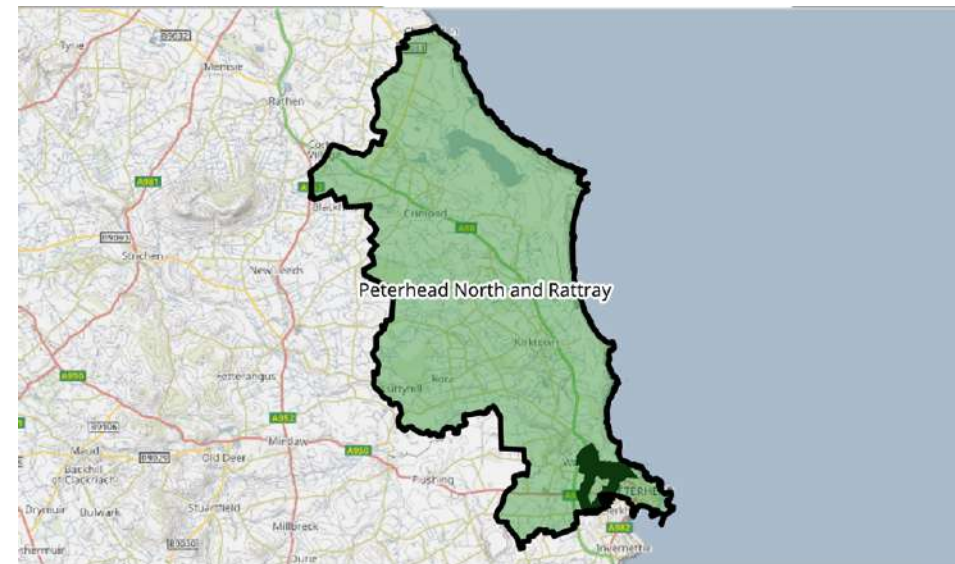


Peterhead Ugeside

Data Zones Within the Intermediate Zone



Relevant Multi-Member Wards



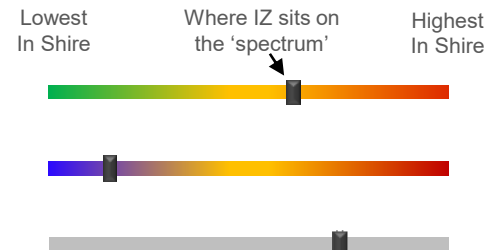
Notes on the Maps

The map on the left shows the location and the geographic area of the Peterhead Ugeside Intermediate Zone which contains six Data Zones. The IZ lies within Ward 5, Peterhead North.

Spectrum Charts Explained

The following statistical pages frequently utilise spectrum charts as a visual aid to accompany an indicator. They are used to place the relevant Intermediate Zone (IZ) in the context of all other IZs in Aberdeenshire with regards to that indicator.

The charts to the right are examples of the spectrum charts used in this report. The black line represents where the IZ sits in the context of the highest and lowest figures in Aberdeenshire. If the black line is situated towards the left-hand side, the IZ recorded one of the lowest figures in Aberdeenshire. Conversely, if the black line is towards the right-hand side, it recorded one of the highest figures in Aberdeenshire.



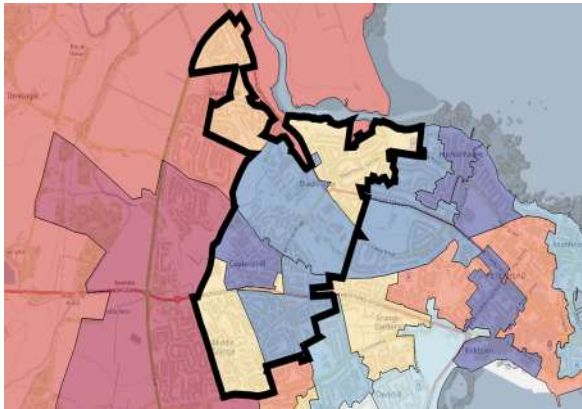
The green/red spectrum charts are the most common type. If the black line is situated towards the red end of the spectrum, it means the figure is objectively worse than most other IZs in Aberdeenshire and *vice versa*.

The blue/red spectrum charts are used in the demographic section to denote high population growth (red) and population decline (blue).

The grey spectrum charts are simply used to denote high and low in the context of Aberdeenshire, where the high / low figure is neither good nor bad. An example would be the proportion of dwellings that fall within Council Tax Bands F-G.

Peterhead Ugieside Demographic Data

Map of Peterhead Ugieside: Population Change (2014-2021)



Low Growth / Depopulation High Growth

The population of the Peterhead Ugieside IZ decreased by 6.4% between 2014 and 2021. This is mainly down to the population shifts in DZ S01007092 where there was a decrease of 102 (16.7%) and DZ S01007090 where there was a decrease of 45 (8.5%).

Compared to 2014 Peterhead Ugieside has seen significant increases in the older age groups especially with the 70+ age range with a 35.7% increase with 80–89-year-olds.

At 61.1%, the proportion of Working Age people in the IZ is just below the average when looking at the spectrum in an Aberdeenshire context.

At 16.2%, there is a lesser proportion of children in the IZ is than in most other areas across Aberdeenshire.

At 22.7% the number of older residents in the IZ is higher than most other areas of Aberdeenshire with the spikes in population change among the 70+ age range.

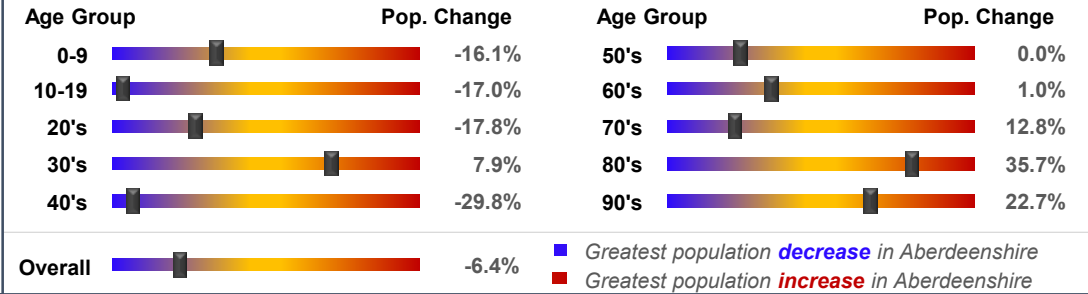
Population Change per Data Zone, 2014 & 2021

Data Zone	2014	2021	% Difference
S01007089	509	506	-0.6%
S01007090	532	487	-8.5%
S01007091	857	832	-2.9%
S01007092	610	508	-16.7%
S01007093	994	916	-7.8%
S01007094	865	837	-3.2%
Total	4367	4086	-6.4%

Population per Age Group, Peterhead Ugieside, 2014-2021



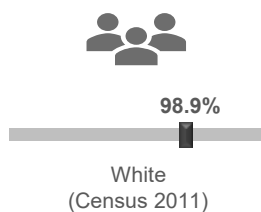
Rate of Population Change per Age Group, 2021 Compared to 2014



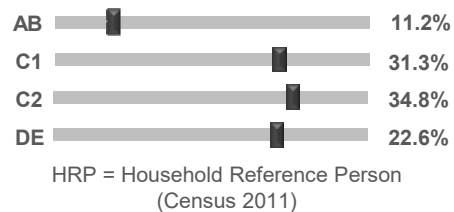
Country of Birth



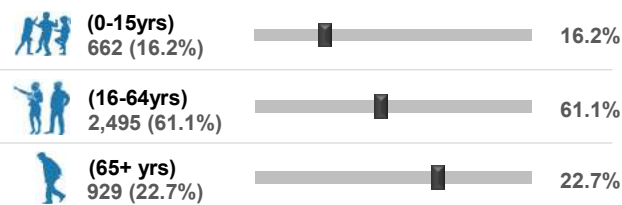
Ethnicity



Approximated Social Grade of HRP



Population per Broad Age Group, 2021



In 2021 4,086 people lived in Peterhead Ugieside -- 662 (16.2%) were under 15 years of age, 2,495 (61.1%) were aged 16-64, and 929 (22.7%) were over 65.

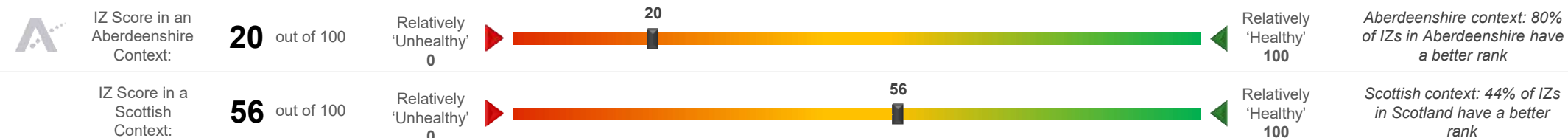
The black markers show where these percentages sit in the context of Aberdeenshire: left = low; right = high.

Peterhead Ugieside Health Data (1 of 2)

SIMD 2020 Health Domain Rank		Universal Credit (UC) Limited Work Capability Households	Personal Independence Payments				
		<p>No. of Households in receipt of Universal Credit</p> <p>% of Households where at least 1 occupant has limited work capability (May-2023) - Aberdeenshire Context</p> <p>2.9%</p>	<p>No. of Cases with Entitlement</p> <p>% of Working Age Population (16-64) Receiving PIPs (Jul-2023) - Aberdeenshire Context</p> <p>3.9%</p>				
<p>Day-to-Day Activities</p> <p>Proportion of people whose day-to-day activities are limited a little or a lot - Aberdeenshire Context (Census 2011)</p> <p>17.1%</p>	<p>Health Rating</p> <p>Proportion of people who rated their health as either 'good' or 'very good' - Aberdeenshire Context (Census 2011)</p> <p>84.6%</p>	<p>According to monthly health-related benefits data, the number of households on Universal Credit has decreased since the summer 2022 peak, generally contradicting the Aberdeenshire trend, which has been on a steady upwards trajectory since late 2021. The number of households with Limited Work Capability or LWC (due to physical or mental health issues) has remained relatively steady throughout the period, now affecting 51 households, which is similar to the number seen over the summer peak. However, the IZ figure of 2.9% of households with at least 1 occupant assessed as having LWC is towards the middle of the Shire spectrum.</p> <p>A higher proportion of the Working Age Population (3.9%) receive Personal Independence Payments (PIPs). This helps with some of the extra costs caused by long-term disability, ill-health or terminal ill-health. The IZ trend has likewise decreased since the 2022 peak.</p>					
SIMD 2020 Health Domain Indicators per each Data Zone in the Peterhead Ugieside Intermediate Zone (compared to Aberdeenshire average)							
<p>SIMD Health Domain Indicator (Data Zones colour-coordinated with map) >></p>							
	S01007089	S01007090	S01007091	S01007092	S01007093	S01007094	Shire
Health Domain Rank (see map for colour-coded rankings) (the higher, the better)	6527	5537	4428	2073	6180	5396	5,254
Comparative Illness Factor (Scotland = 100) (the lower, the better)	35	50	100	135	45	60	58
Emergency stays in hospital (Scotland = 100) (the lower, the better)	55.0	72.9	66.5	98.9	50.9	63.8	71.5
Hospital stays related to alcohol misuse (Scotland = 100) (the lower, the better)	0.0	21.8	41.3	59.4	40.3	20.1	45.4
Hospital stays related to drug misuse (Scotland = 100) (the lower, the better)	30.9	0.0	15.3	93.6	17.4	19.6	30
Proportion of live singleton births of lowbirth weight (the lower, the better)	6.3%	8.0%	9.1%	17.4%	0.0%	8.6%	4.0%
Proportion of population being prescribed drugs for anxiety, depression or psychosis	15.4%	16.1%	14.8%	23.8%	17.2%	14.9%	15.6%
Standardised Mortality Ratio (Scotland = 100) (the lower, the better)	72	87	59	132	48	74	85

Peterhead Ugeside Health Data (2 of 2)

Peterhead Ugeside's position on the 'Health Spectrum' – Aberdeenshire and Scottish Context (the higher the score, the better)



Selection of ScotPHO indicators, Peterhead Ugeside IZ compared to Aberdeenshire & Scotland (latest data)

Indicator	Latest Available Figures				IZ Trend	Indicator Measurement
	IZ	IZ's latest figure compared to:				
		Aberdeenshire	Scotland			
Alcohol-related hospital stays	273.6	2.9%		-55.2%	Up	Rate per 100,000 pop.
All-cause mortality among the 15-44 year olds	166.0	75.9%		41.7%	Up	Rate per 100,000 pop.
Babies exclusively breastfed at 6-8 weeks	28.9	-11.7%		-2.9%	Up	% of babies with a valid feeding status
Bowel screening uptake	72.1	-0.9%		6.6%	Up	% of eligible people (aged 50-74)
Child dental health in primary 1	59.3	-19.5%		-13.9%	Up	% of P1 pupils
Child dental health in primary 7	56.8	-22.9%		-18.1%	Up	% of P7 pupils
Child healthy weight in primary 1	80.7	3.3%		10.9%	Up	% of P1 pupils
Deaths all ages	1038.4	-1.9%		-12.1%	Down	Rate per 100,000 pop.
Developmental concerns at 27-30 months	12.1	9.3%		-2.5%	Up	% of children reviewed
Early deaths from cancer (<75)	200.6	52.2%		34.1%	Up	Rate per 100,000 pop.
Early deaths from coronary heart disease (<75)	23.3	-38.3%		-55.7%	Down	Rate per 100,000 pop.
Female life expectancy	82.4	0.7%		2.1%	Down	Life expectancy at birth in years
Healthy birth weight	82.9	-0.2%		-1.3%	Down	% of all singleton births
Immunisation uptake at 24 months - 6 in 1	96.9	-0.8%		0.0%	Down	% of children in relevant age group
Immunisation uptake at 24 months - MMR	92.9	-1.9%		-1.5%	Down	% of children in relevant age group
Male life expectancy	78.6	1.2%		2.7%	Down	Life expectancy at birth in years
Maternal obesity	32.1	7.7%		6.0%	Up	% of women at antenatal booking
Patients (65+) with multiple A&E hospitalisations	5088.8	-19.1%		-25.4%	Down	Rate per 100,000 pop.
Patients hospitalised with asthma	31.8	-0.4%		-53.5%	Down	Rate per 100,000 pop.
Patients hospitalised with COPD	121.0	3.4%		-41.7%	Down	Rate per 100,000 pop.
Patients hospitalised with coronary heart disease	144.6	-50.8%		-57.7%	Down	Rate per 100,000 pop.
Patients with emergency hospitalisations	4831.2	-8.5%		-33.2%	Down	Rate per 100,000 pop.
Premature births	7.0	-2.3%		-1.3%	Down	% of all live births
Uptake of the HPV vaccine in S3 girls	79.3	-10.1%		-5.6%	Down	% of S3 girls

Based on the 24 health-related indicators in the table, this IZ is situated at the more vulnerable end of the spectrum (20) in an Aberdeenshire context. The IZ fares slightly better when all IZs in Scotland are taken into consideration as it is in the top half nationally (56).

The area compares favourably to most other areas in Scotland in terms of Patients with emergency hospitalisations, of Patients (65+) with emergency hospitalisations and Patients hospitalised with coronary heart disease (<75)

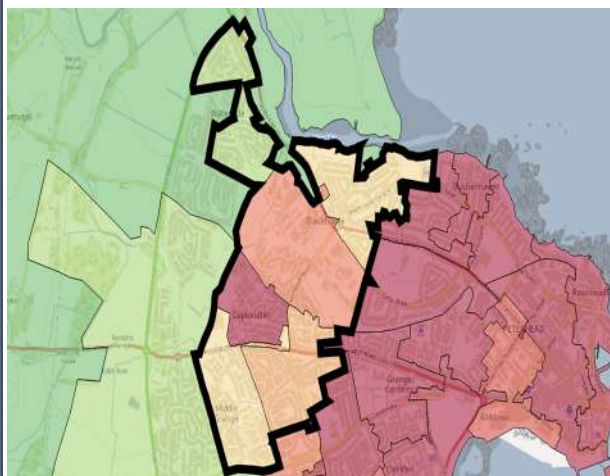
Issues that may require further investigation include:

- Child Dental health in primary 7
- Child Dental health in primary 1

With regards to each of the indicators listed above the IZ compares less favourably to other areas in Aberdeenshire and, in some instances, Scotland (and/or the trend is worsening).

Peterhead Ugieside Economic Data (1 of 3)

Rank of Household Income per Data Zone (2023)



In terms of household income, this IZ is among the poorest in Aberdeenshire. The median household income in 2023 equated to £37,201 which is £4,555 lower than the Shire average (£41,756).

Median household income ranges from £22,954 in DZ S01007092 to £48,390 in DZ S01007089.

Approximately 6.1% of households in this IZ earn less than £10,000 per year, which is higher-than-average (5.3%). This equates to roughly 108 households.

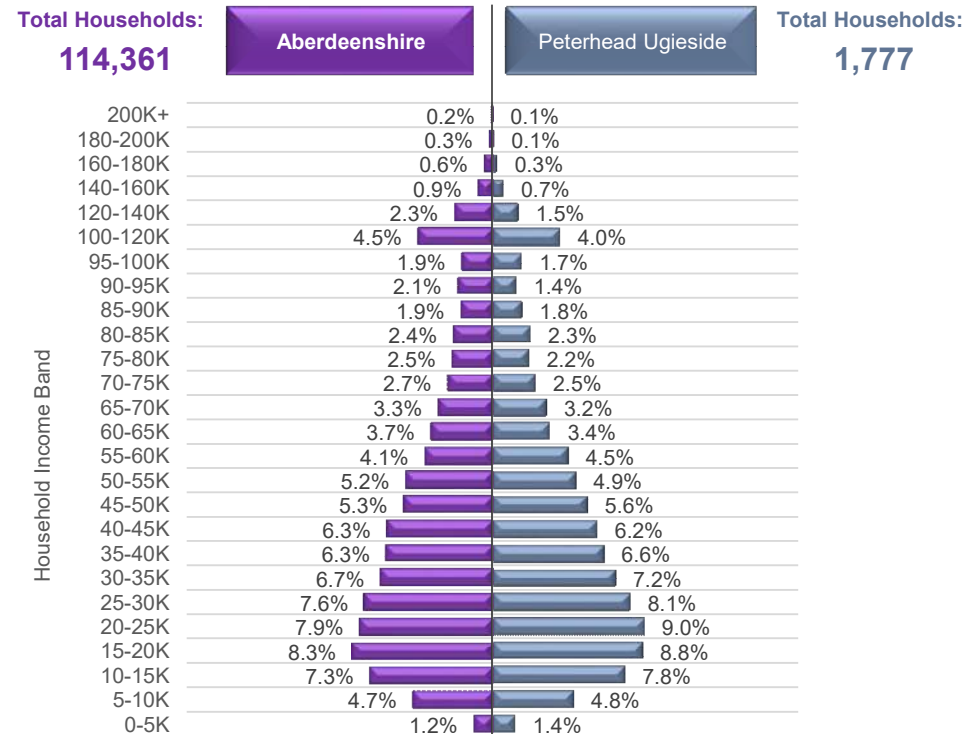
In addition, Approximately 6.6% of households in this IZ earn more than £100,000 per year, which is lower than average (10.1%). This equates to roughly 117 households.



Household Income per Data Zone (2023)

Data Zone	Households	Average Income	Median Income	Lower Quartile Income
S01007089	219	£ 55,801	£ 48,390	£ 28,792
S01007090	230	£ 41,781	£ 35,187	£ 21,138
S01007091	295	£ 47,613	£ 40,220	£ 23,259
S01007092	266	£ 29,656	£ 22,954	£ 13,070
S01007093	415	£ 46,217	£ 38,501	£ 22,371
S01007094	352	£ 47,634	£ 40,514	£ 23,886

Household Income per Band, Peterhead Ugieside & Aberdeenshire (2023)



© CACI Limited 1996 - 2022 This report shall be used solely for academic, personal and/or non-commercial purposes. The applicable copyright notices can be found at <https://www.caci.co.uk/copyrightnotices.pdf>

Median Household Income (2023)



£37,201

Aberdeenshire: £41,756

£37,201



% of Households Earning Less Than £10k (2023)



<£10K

6.1%

Aberdeenshire: 5.3%

6.1%



% of Households Earning More Than £100k (2023)



>£100K

6.6%

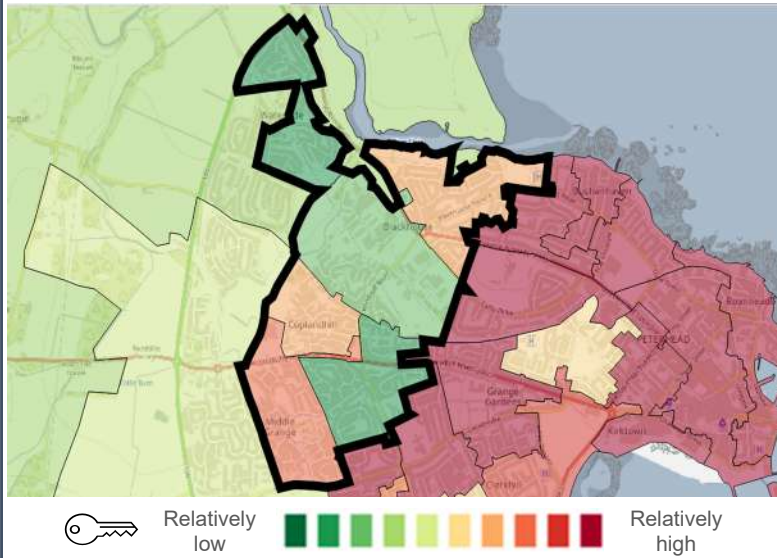
Aberdeenshire: 10.1%

6.6%

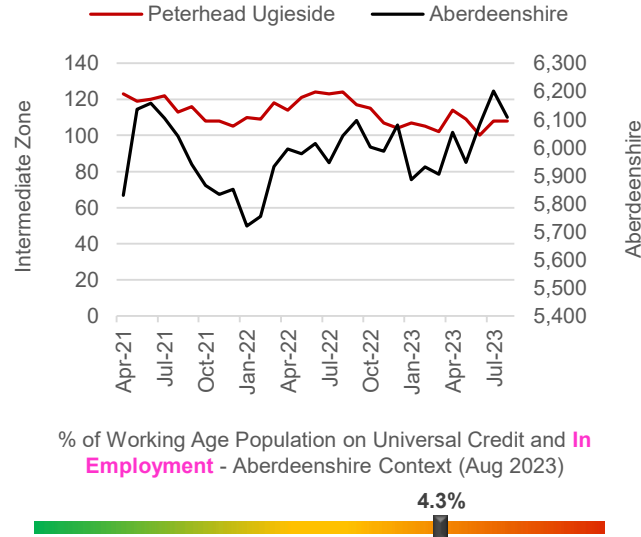


Peterhead Ugieside Economic Data (2 of 3)

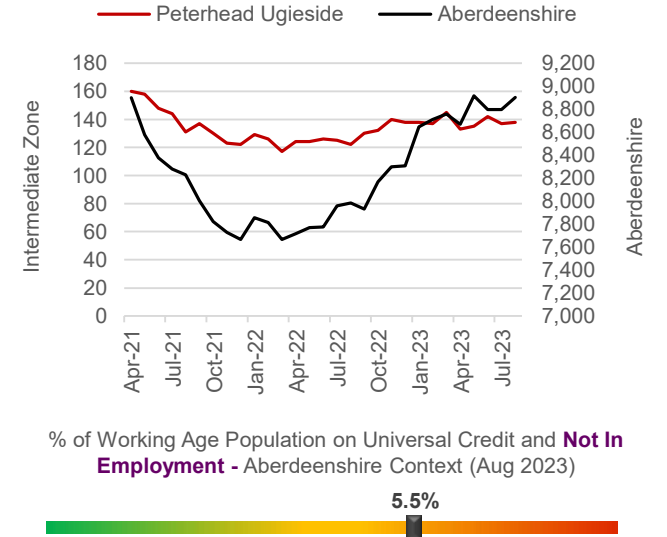
Latest Unemployment Rate - Ranking per Data Zone



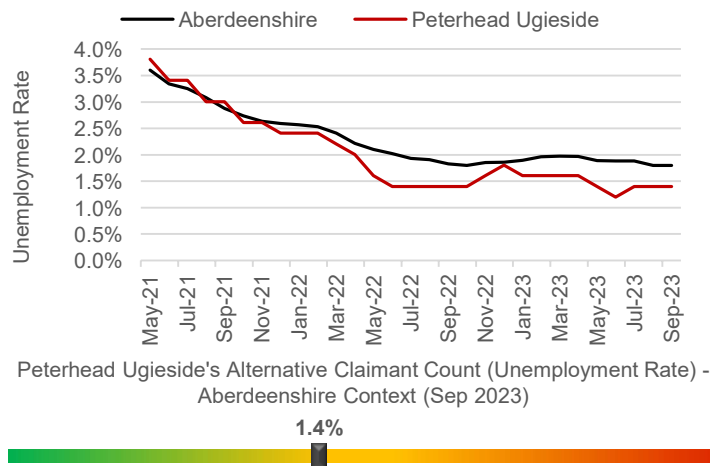
People on Universal Credit - In Employment



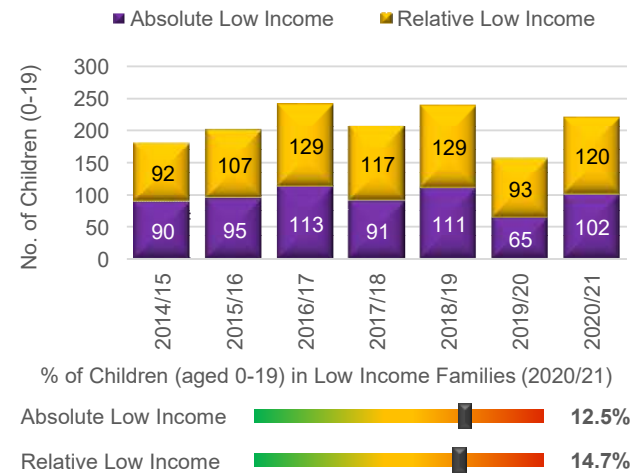
People on Universal Credit - Not In Employment



Alternative Claimant Count - Effective 'Unemployment Rate'



Children in Low Income Families



Summary

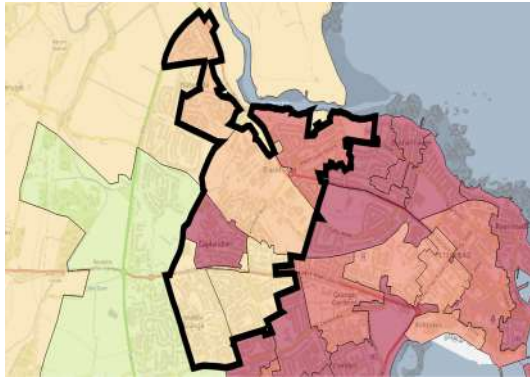
The number of people claiming Universal Credit (UC) - who are also in employment - has remained relatively steady over the last few months, contrary to the Shire-wide trend, which has increased. Latest figures show 4.3% of people aged 16-64 (who also have jobs) are claiming UC. This is towards the higher end of the spectrum in a Shire context. A similar picture emerges in relation to people on UC and not in employment.

Like Aberdeenshire, the unemployment rate in the IZ has fallen substantially since the September 2020 peak of 3.8%. Latest data suggests approximately 1.4% of the Working Age population is currently out-of-work, which is lower than the Aberdeenshire rate (1.8%).

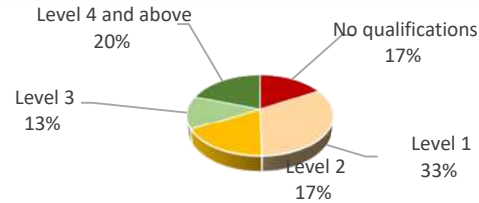
Children living in low-income families are relatively uncommon. However, recent increases suggest the issue may be coming more to the fore over recent years, particularly since 2020/21.

Peterhead Ugieside Economic Data (3 of 3)

People With No Qualifications, Census 2011



% of Employees per Qualification Type



Summary

The employment numbers per broad industrial group relate to the kind of jobs within the area, which may be filled by those living outwith the IZ.

Major industries in terms of jobs in the area include the Manufacturing sector, the Transport sector, Wholesale and the Retail sector.

There has been a large growth in Construction sector. Jobs in this industry have increased by 150% since 2020.

Even with the growth in these type of jobs, there has been a 20% decrease in jobs across the IZ between 2020 and 2022, suggesting this area was hit hard and has struggled post-Covid.

The area also appears to have lost a number of enterprises over the most recent year (i.e. companies with sales between £0 - £499k).

Approximate Employment Count per Broad Industrial Group, Peterhead Ugieside, 2020-22

Broad Industrial Group	2020	2021	2022	2020-22 % Diff.
Agriculture, forestry & fishing	75	40	35	-53%
Mining, quarrying & utilities	0	0	0	0%
Manufacturing	200	175	150	-25%
Construction	20	50	50	150%
Motor trades	35	40	35	0%
Wholesale	100	100	75	-25%
Retail	100	100	75	-25%
Transport & storage (inc postal)	150	100	100	-33%
Accommodation & food services	20	10	10	-50%
Information & communication	20	5	10	-50%
Financial & insurance	0	0	0	0%
Property	35	25	20	-43%
Professional, scientific & technical	50	40	50	0%
Business administration & support services	25	30	25	0%
Public administration & defence	50	40	40	-20%
Education	0	0	0	0%
Health	20	20	35	75%
Arts, entertainment, recreation & other services	10	10	15	50%
Total	910	785	725	-20%

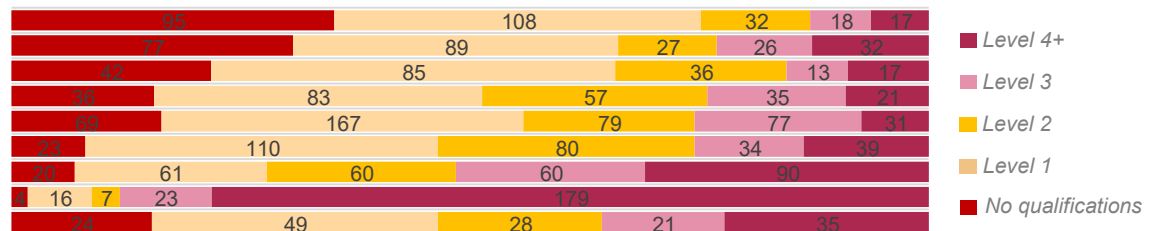
Approximate Number of Enterprises per Turnover Band (£), Peterhead Ugieside, 2021-23

Turnover	2021	2022	2023	2021-23 % Diff.
£1m+	0	0	0	0%
£500-999k	0	0	0	0%
£200-499k	15	15	10	-33%
£100-199k	55	45	50	-9%
£50-99k	25	20	15	-40%
£0-49k	20	15	10	-50%

Employees per Occupation Type, Census 2011

Elementary occupations	270
Process, plant and machine operatives	251
Sales and customer service occupations	193
Caring, leisure and other service occupations	232
Skilled trades occupations	423
Administrative and secretarial occupations	286
Associate professional and technical...	291
Professional occupations	229
Managers, directors and senior officials	157

Employees per Qualification & Occupation Type, Census 2011



Peterhead Ugieside Housing Data



Relatively sparse / rural

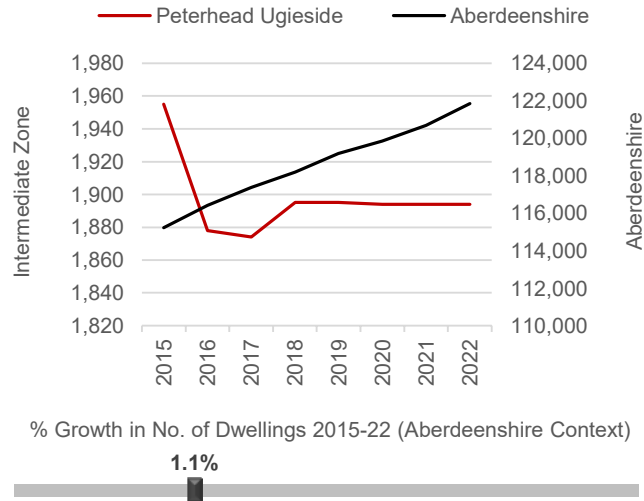
Dwellings per Hectare (2022)

12.07



Relatively dense / urban

Number of Dwellings, 2015-22



Summary

At 12.07 dwellings per hectare, this IZ is in the higher range of the spectrum between the rural and urban extremes.

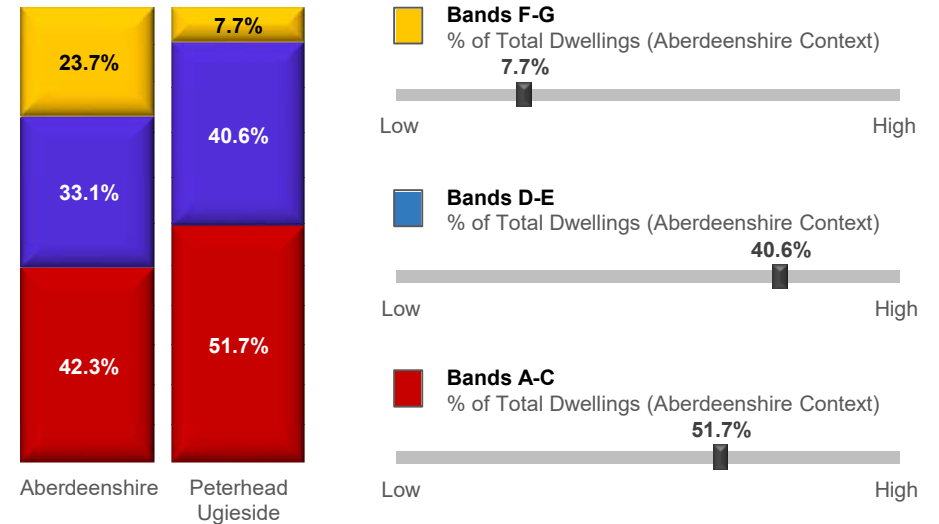
The number of dwellings in the IZ has increased by 1.1% since 2015, which is towards the lower end of the spectrum in an Aberdeenshire context.

House building in the area has plateaued since 2018.

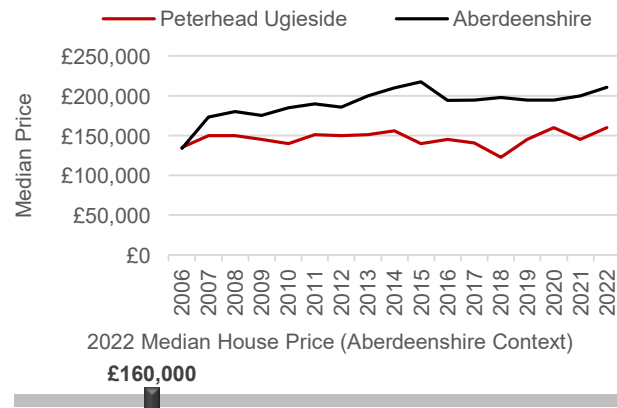
A relatively large proportion of the dwellings in this IZ (51.7%) fall within Council Tax Bands A-C. This puts the IZ towards the higher end of the spectrum. Relatively few properties fall within Bands F-G (7.7%).

The median house price is £160,000 which is significantly lower £50,995 lower than the Aberdeenshire average (£210,995).

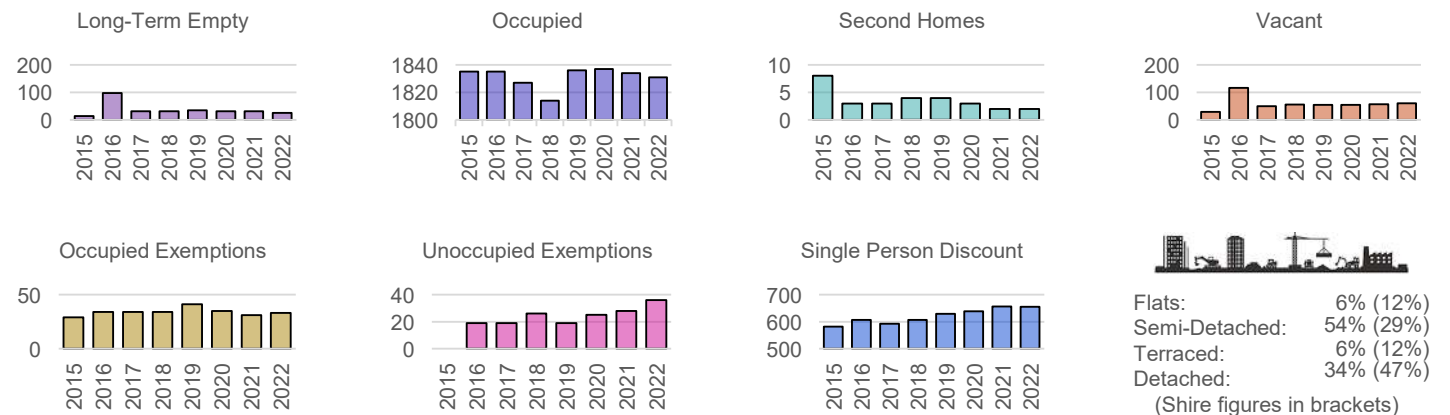
Proportion of Dwellings per Council Tax Band, 2022



Median Residential House Prices (Sales), 2006-22

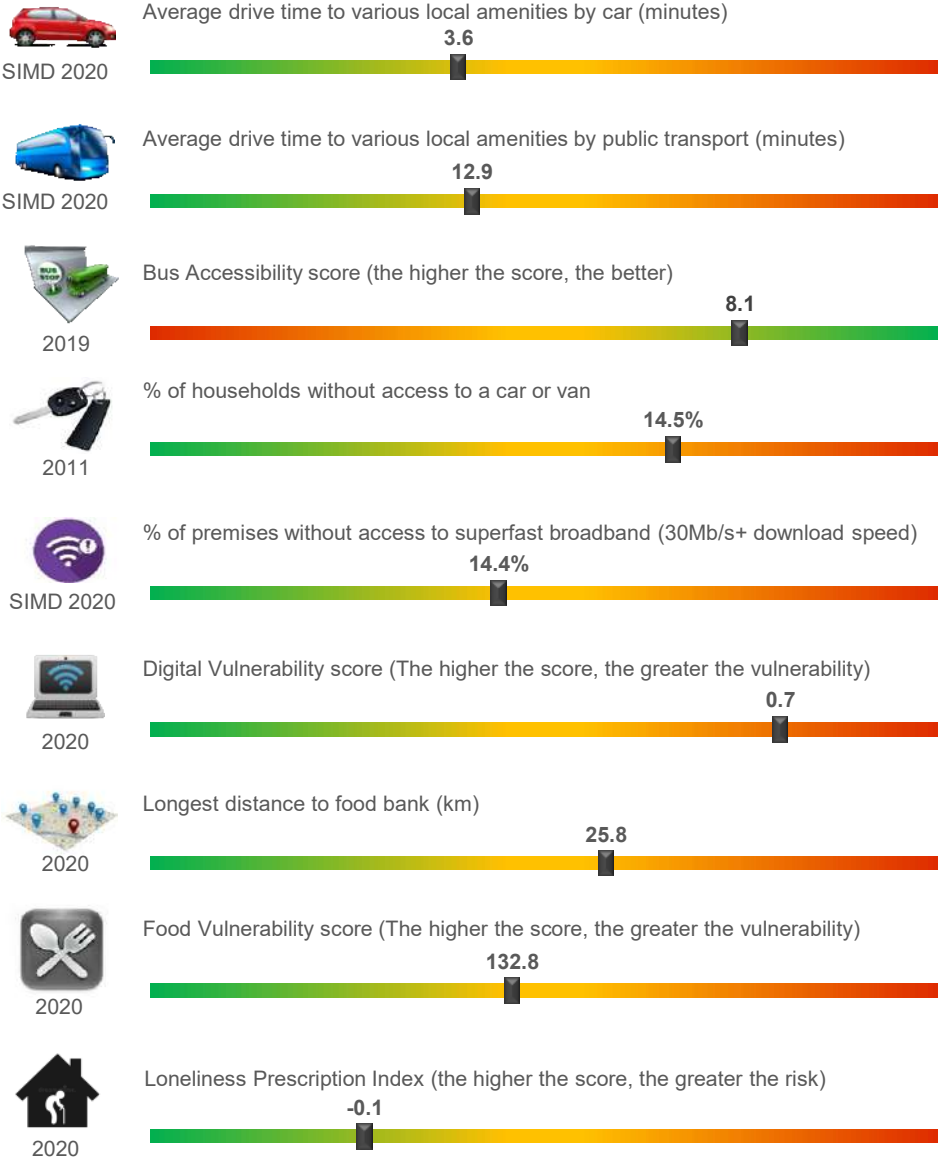


Housing Types, 2015-22 (Data on Flats, etc., relate to 2017 - the latest year for which data are available)

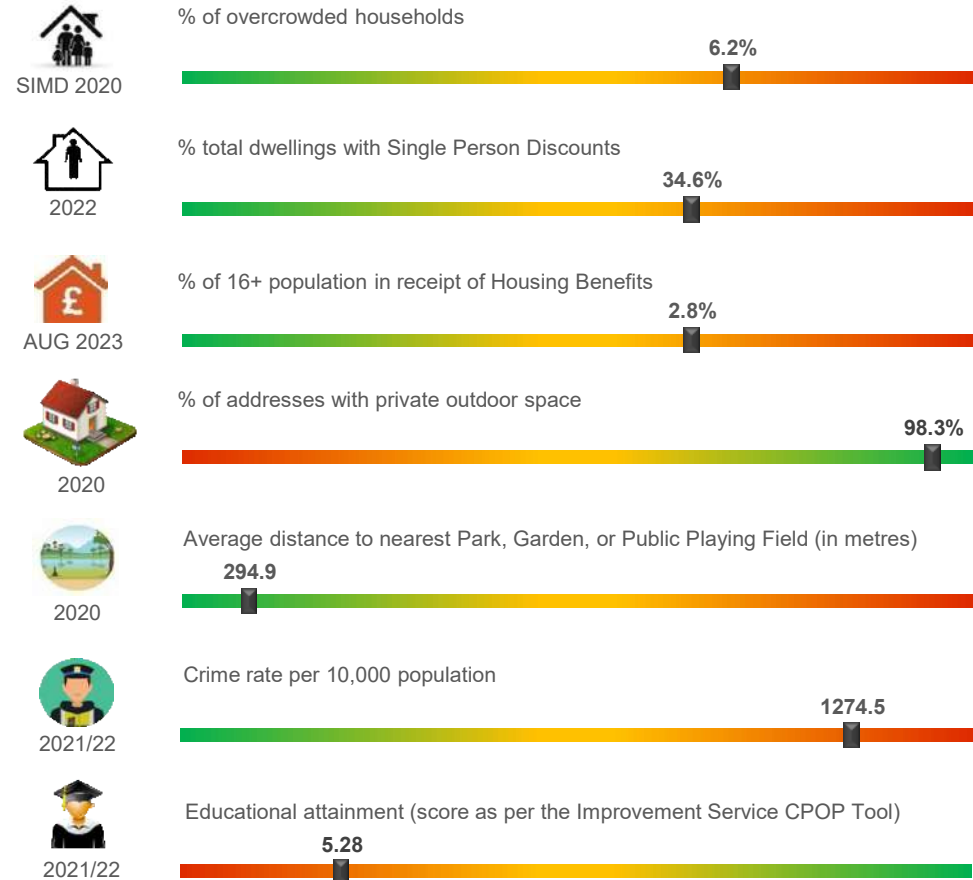


Peterhead Ugieside Other Socio-Economic Data

Geographic Access / Digital Connectivity / Food Vulnerability / Loneliness Proxy



Housing / Environment / Crime Rate / Educational Attainment



Summary

According to the miscellaneous socio-economic indicators on this page, this the IZ appears to be well served in terms of households with low average drive times to local amenities by car or bus as well as a high bus accessibility score. The % of households without access to a car or van is the lowest in Peterhead at 85.5%. Educational attainment is at the lower end of the scale.

Overcrowding is above average at 6.2% and the number of dwellings with single person discounts or in receipt of Housing Benefit is relatively high in this IZ. Around 14.4% of premises have no access to superfast broadband however Digital Vulnerability remains relatively high within Aberdeenshire.