

Macduff

Intermediate Zone Statistical Summary

2023

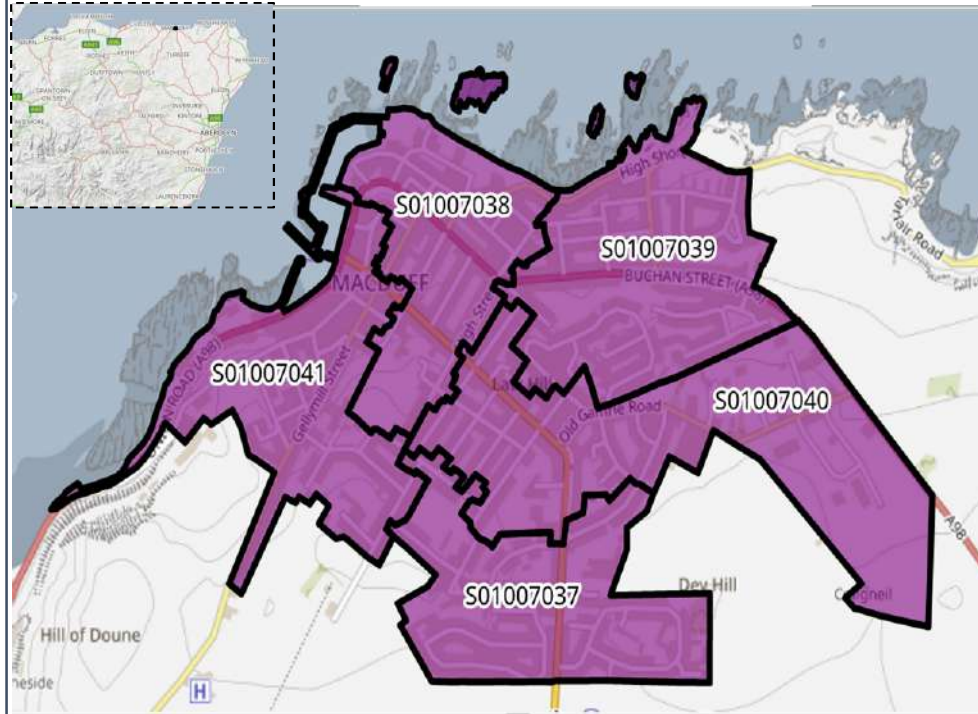


Daniel Stanford

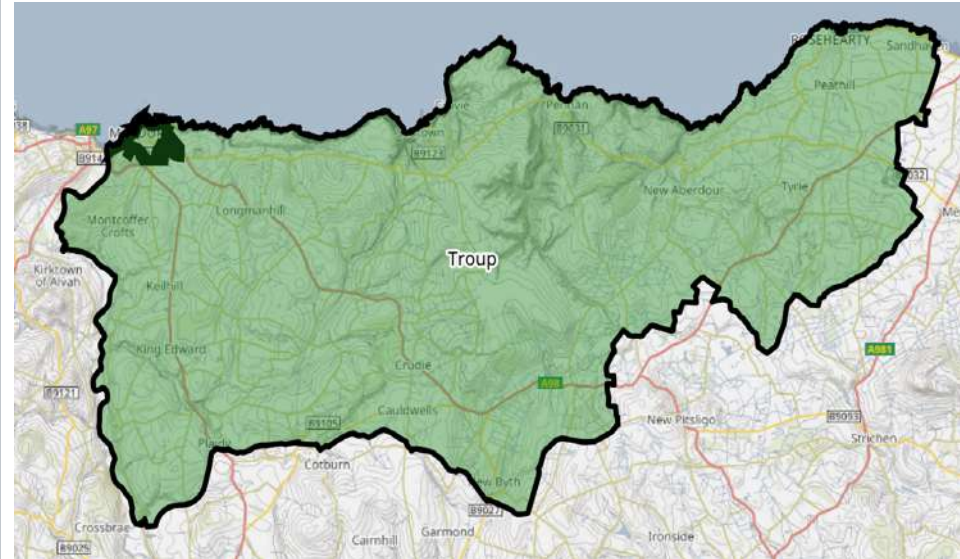


Macduff

Data Zones Within the Intermediate Zone



Relevant Multi-Member Wards



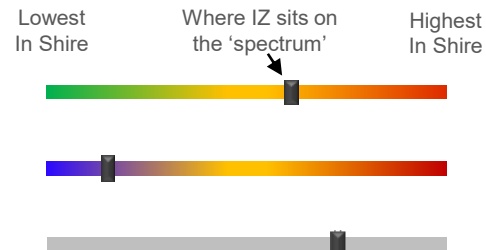
Notes on the Maps

The map on the left shows the location and the geographic area of the Macduff Intermediate Zone which contains five Data Zones. The Intermediate Zone is within the Troupe Ward.

Spectrum Charts Explained

The following statistical pages frequently utilise spectrum charts as a visual aid to accompany an indicator. They are used to place the relevant Intermediate Zone (IZ) in the context of all other IZs in Aberdeenshire with regards to that indicator.

The charts to the right are examples of the spectrum charts used in this report. The black line represents where the IZ sits in the context of the highest and lowest figures in Aberdeenshire. If the black line is situated towards the left-hand side, the IZ recorded one of the lowest figures in Aberdeenshire. Conversely, if the black line is towards the right-hand side, it recorded one of the highest figures in Aberdeenshire.



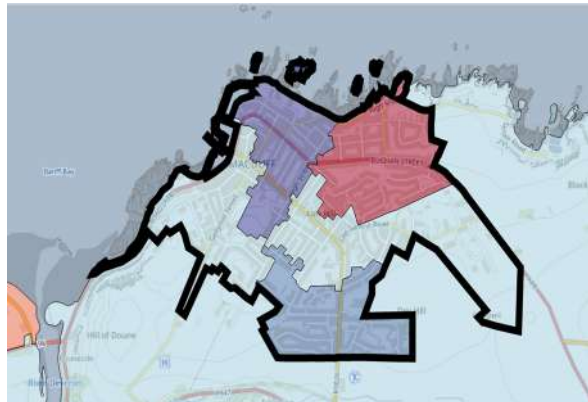
The green/red spectrum charts are the most common type. If the black line is situated towards the red end of the spectrum, it means the figure is objectively worse than most other IZs in Aberdeenshire and *vice versa*.

The blue/red spectrum charts are used in the demographic section to denote high population growth (red) and population decline (blue).

The grey spectrum charts are simply used to denote high and low in the context of Aberdeenshire, where the high / low figure is neither good nor bad. An example would be the proportion of dwellings that fall within Council Tax Bands F-G.

Macduff Demographic Data

Map of Macduff: Population Change (2014-2021)



Low Growth / Depopulation (Blue) High Growth (Red)

The population of the Macduff IZ decreased by 4.2% between 2014 and 2021. This is mainly down to the population shifts in DZ S01007038 where there was a decrease of 117 (15.9%) and DZ S01007037 where there was a decrease of 93 (9.6%).

Compared to 2014 Macduff has seen significant decreases in the younger age groups especially with the 40 - 49 age range with a 22.9% decrease with 40-49-year-olds.

At 63.5%, the proportion of Working Age people in the IZ is at the top of the spectrum in an Aberdeenshire context.

At 16.7%, there is a lesser proportion of children in the IZ is than in most other areas across Aberdeenshire.

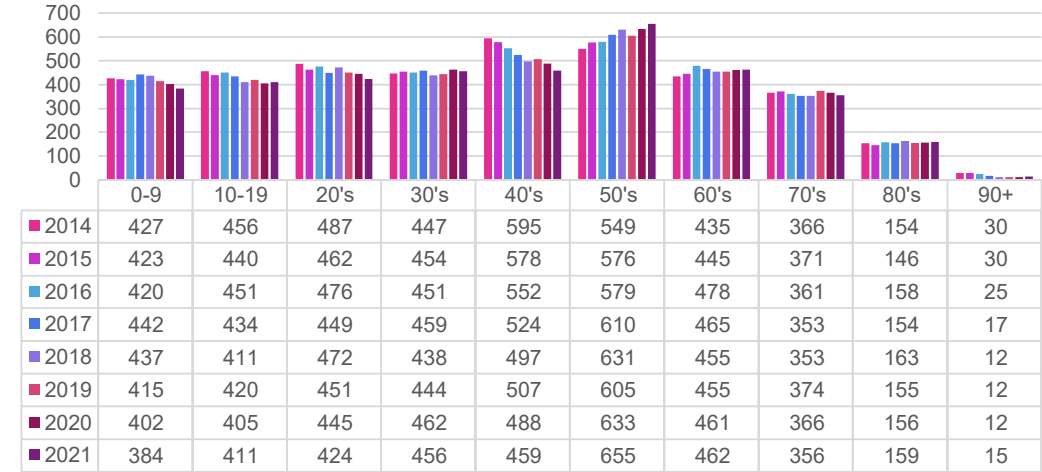
At 19.8% the number of older residents in the IZ is lower than most other areas of Aberdeenshire.

In the one DZ that has a seen population increase this is mostly down to a surge in children and working-class age groups.

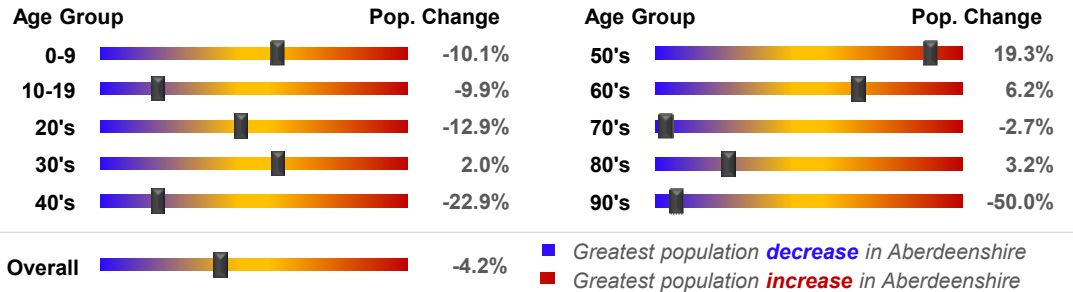
Population Change per Data Zone, 2014 & 2021

Data Zone	2014	2021	% Difference
S01007037	967	874	-9.6%
S01007038	735	618	-15.9%
S01007039	879	1011	15.0%
S01007040	616	577	-6.3%
S01007041	749	701	-6.4%
Total	3946	3781	-4.2%

Population per Age Group, Macduff, 2014-2021



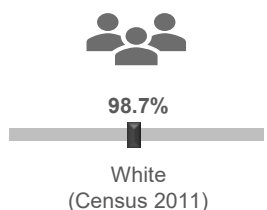
Rate of Population Change per Age Group, 2021 Compared to 2014



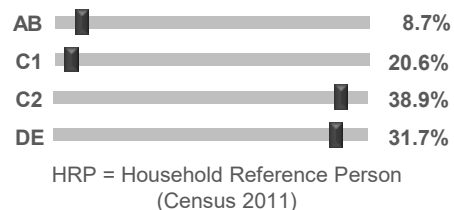
Country of Birth



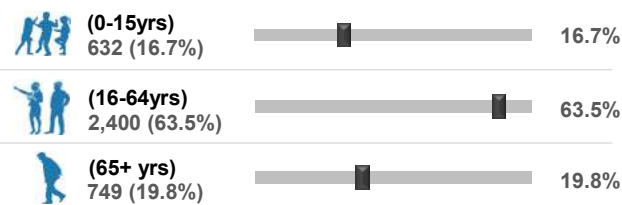
Ethnicity



Approximated Social Grade of HRP

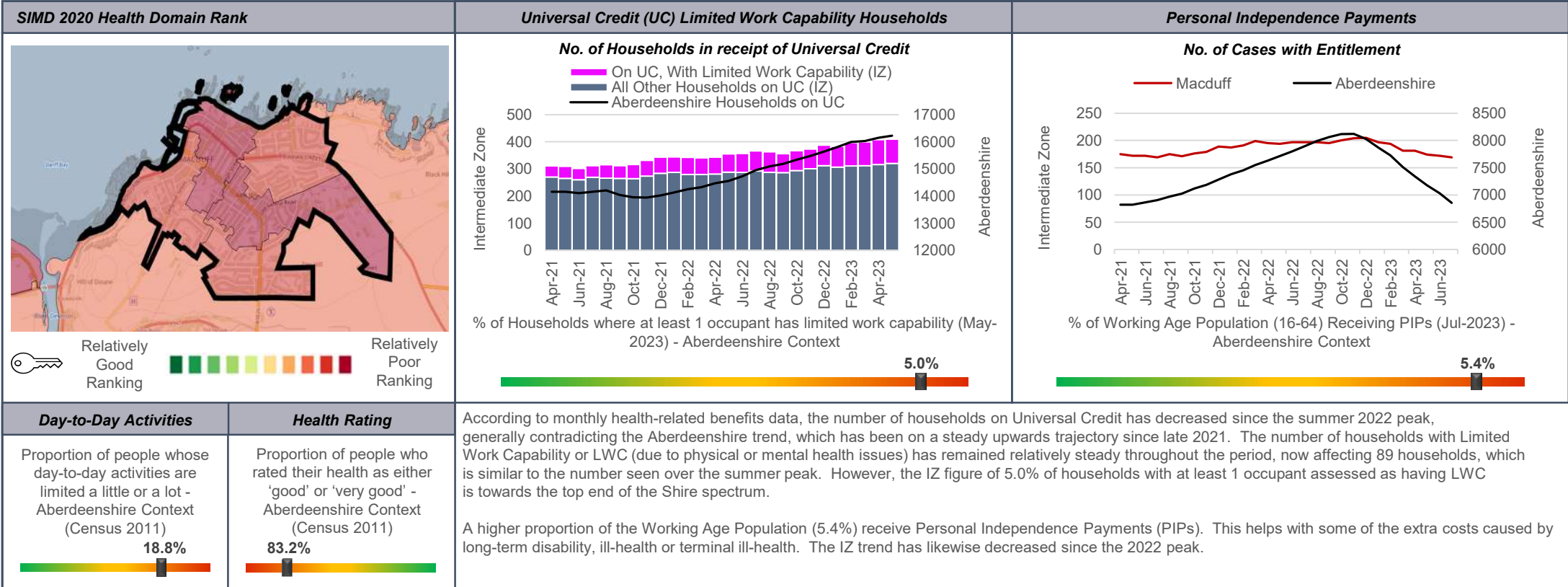


Population per Broad Age Group, 2021



In 2021 3,781 people lived in Macduff -- 632 (16.7%) were under 15 years of age, 2,400 (63.5%) were aged 16-64, and 749 (19.8%) were over 65.

The black markers show where these percentages sit in the context of Aberdeenshire: left = low; right = high.

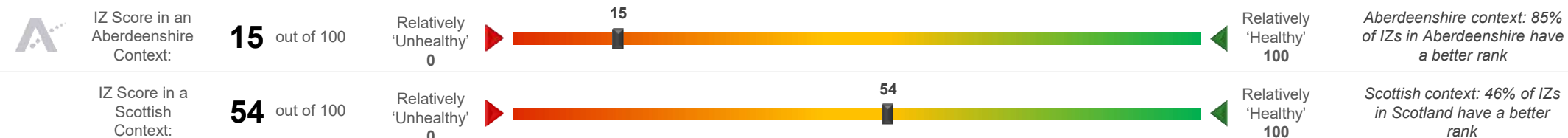


SIMD 2020 Health Domain Indicators per each Data Zone in the Macduff Intermediate Zone (compared to Aberdeenshire average)

SIMD Health Domain Indicator (Data Zones colour-coordinated with map) >>	S01007037	S01007038	S01007039	S01007040	S01007041	Shire
Health Domain Rank (see map for colour-coded rankings) (the higher, the better)	3384	2823	3305	3075	3558	5,254
Comparative Illness Factor (Scotland = 100) (the lower, the better)	95	105	95	100	90	58
Emergency stays in hospital (Scotland = 100) (the lower, the better)	80.7	96.3	92.4	94.6	88.7	71.5
Hospital stays related to alcohol misuse (Scotland = 100) (the lower, the better)	64.1	77.9	155.9	165.6	78.7	45.4
Hospital stays related to drug misuse (Scotland = 100) (the lower, the better)	98.3	311.9	32.0	27.4	61.5	30
Proportion of live singleton births of lowbirth weight (the lower, the better)	4.3%	5.9%	5.4%	5.0%	3.1%	4.0%
Proportion of population being prescribed drugs for anxiety, depression or psychosis	19.5%	18.8%	17.5%	19.5%	17.9%	15.6%
Standardised Mortality Ratio (Scotland = 100) (the lower, the better)	115	108	97	99	91	85

Macduff Health Data (2 of 2)

Macduff's position on the 'Health Spectrum' – Aberdeenshire and Scottish Context (the higher the score, the better)



Selection of ScotPHO indicators, Macduff IZ compared to Aberdeenshire & Scotland (latest data)

Indicator	Latest Available Figures				IZ Trend	Indicator Measurement
	IZ	IZ's latest figure compared to:				
		Aberdeenshire	Scotland			
Alcohol-related hospital stays	326.4	22.8%	-46.6%	Down	Rate per 100,000 pop.	
All-cause mortality among the 15-44 year olds	131.6	39.4%	12.3%	Up	Rate per 100,000 pop.	
Babies exclusively breastfed at 6-8 weeks	23.3	-17.3%	-8.6%	Down	% of babies with a valid feeding status	
Bowel screening uptake	70.3	-2.7%	4.7%	Up	% of eligible people (aged 50-74)	
Child dental health in primary 1	75.0	-3.8%	1.9%	Down	% of P1 pupils	
Child dental health in primary 7	65.9	-13.9%	-9.1%	Up	% of P7 pupils	
Child healthy weight in primary 1	79.4	2.1%	9.6%	Up	% of P1 pupils	
Deaths all ages	1249.6	18.0%	5.8%	Down	Rate per 100,000 pop.	
Developmental concerns at 27-30 months	1.7	-1.2%	-12.9%	Down	% of children reviewed	
Early deaths from cancer (<75)	139.3	5.7%	-6.9%	Down	Rate per 100,000 pop.	
Early deaths from coronary heart disease (<75)	44.2	17.1%	-15.9%	Down	Rate per 100,000 pop.	
Female life expectancy	81.3	-0.7%	0.7%	Up	Life expectancy at birth in years	
Healthy birth weight	82.1	-1.0%	-2.1%	Up	% of all singleton births	
Immunisation uptake at 24 months - 6 in 1	97.2	-0.6%	0.2%	Up	% of children in relevant age group	
Immunisation uptake at 24 months - MMR	97.2	2.4%	2.8%	Up	% of children in relevant age group	
Male life expectancy	74.8	-3.7%	-2.3%	Down	Life expectancy at birth in years	
Maternal obesity	22.5	-1.9%	-3.6%	Up	% of women at antenatal booking	
Patients (65+) with multiple A&E hospitalisations	6886.3	9.4%	0.9%	Down	Rate per 100,000 pop.	
Patients hospitalised with asthma	42.7	33.6%	-37.6%	Down	Rate per 100,000 pop.	
Patients hospitalised with COPD	136.1	16.3%	-34.4%	Down	Rate per 100,000 pop.	
Patients hospitalised with coronary heart disease	353.0	20.0%	3.3%	Down	Rate per 100,000 pop.	
Patients with emergency hospitalisations	6510.3	23.3%	-10.0%	Down	Rate per 100,000 pop.	
Premature births	10.2	0.9%	1.9%	Down	% of all live births	
Uptake of the HPV vaccine in S3 girls	86.2	-3.2%	1.3%	Down	% of S3 girls	

Based on the 24 health-related indicators in the table, this IZ is situated at the more vulnerable end of the spectrum (15) in an Aberdeenshire context. The IZ fares slightly better when all IZs in Scotland are taken into consideration as it is in the top half nationally (54).

The area compares favourably to most other areas in Scotland in terms of Developmental concerns at 27-30 months, Immunisation uptake at 24 month – 5 in 1, Alcohol-related hospital stays, Patients hospitalised with asthma, and Early deaths from coronary heart disease (75%)

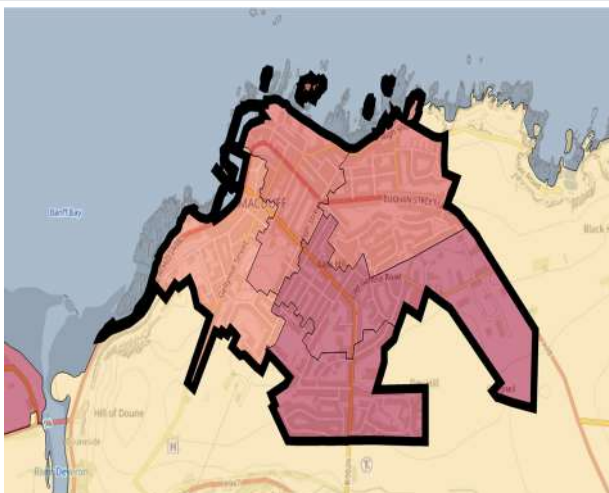
Issues that may require further investigation include:

- Premature Births
- Child dental health in primary 7
- Deaths all ages

With regards to each of the indicators listed above the IZ compares less favourably to other areas in Aberdeenshire and, in some instances, Scotland (and/or the trend is worsening).

Macduff Economic Data (1 of 3)

Rank of Household Income per Data Zone (2023)



In terms of household income, this IZ is among the poorest in Aberdeenshire. The median household income in 2023 equated to £29,185 which is £12,571 lower than the Shire average (£41,756).

Median household income ranges from £25,650 in DZ S01007040 to £31,701 in DZ S01007041.

Approximately 9.7% of households in this IZ earn less than £10,000 per year, which is higher-than-average (5.3%). This equates to roughly 174 households.

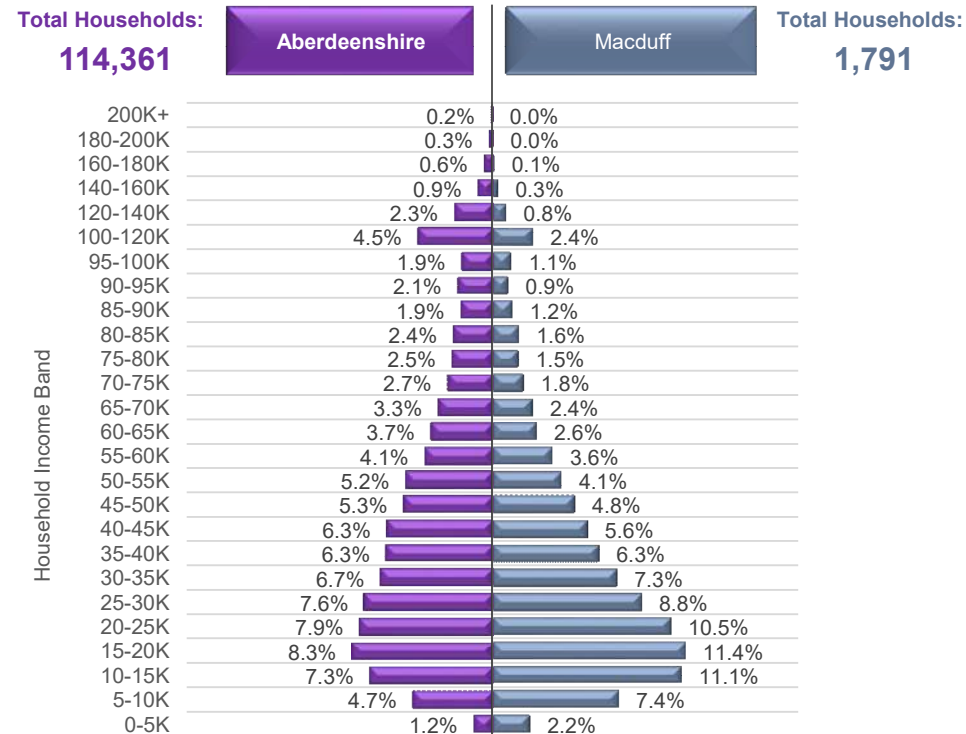
In addition, Approximately 3.7% of households in this IZ earn more than £100,000 per year, which is lower than average (10.1%). This equates to roughly 66 households.



Household Income per Data Zone (2023)

Data Zone	Households	Average Income	Median Income	Lower Quartile Income
S01007037	413	£ 34,152	£ 26,936	£ 15,818
S01007038	285	£ 37,737	£ 30,959	£ 18,344
S01007039	458	£ 39,839	£ 31,118	£ 17,441
S01007040	284	£ 32,483	£ 25,650	£ 15,078
S01007041	351	£ 39,417	£ 31,701	£ 18,017

Household Income per Band, Macduff & Aberdeenshire (2023)



© CACI Limited 1996 - 2022 This report shall be used solely for academic, personal and/or non-commercial purposes. The applicable copyright notices can be found at <https://www.caci.co.uk/copyrightnotices.pdf>

Median Household Income (2023)



£29,185

Aberdeenshire: £41,756

£29,185



% of Households Earning Less Than £10k (2023)



<£10K

9.7%

Aberdeenshire: 5.3%

9.7%



% of Households Earning More Than £100k (2023)



>£100K

3.7%

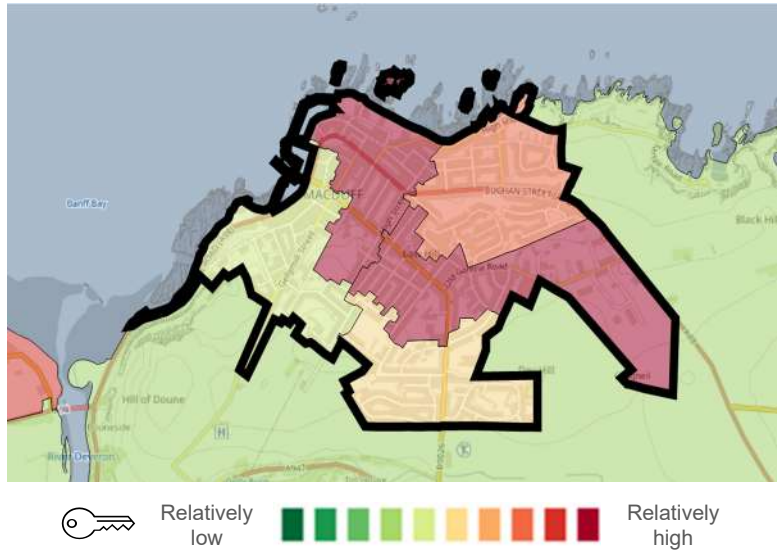
Aberdeenshire: 10.1%

3.7%

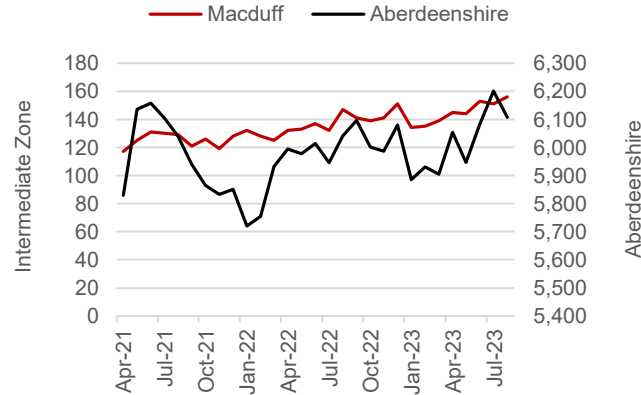


Macduff Economic Data (2 of 3)

Latest Unemployment Rate - Ranking per Data Zone



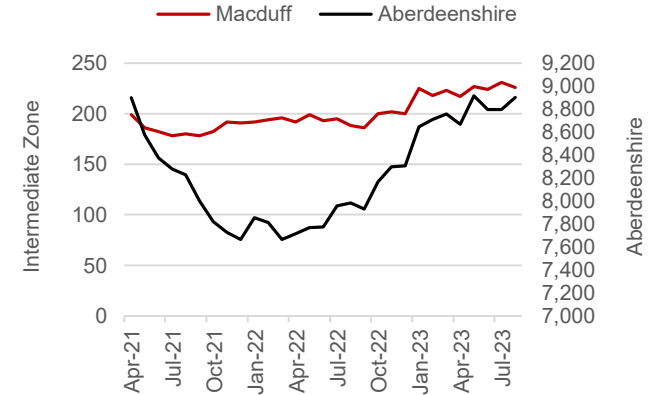
People on Universal Credit - In Employment



% of Working Age Population on Universal Credit and In Employment - Aberdeenshire Context (Aug 2023)



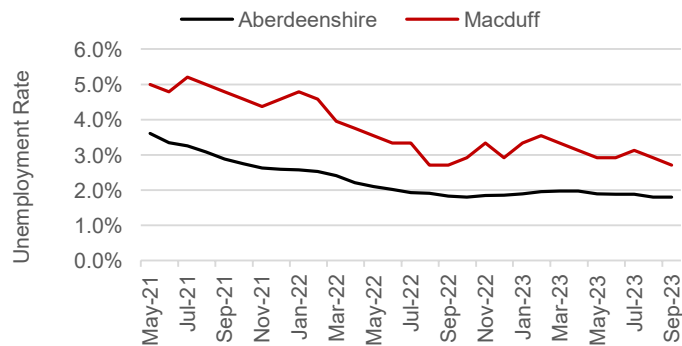
People on Universal Credit - Not In Employment



% of Working Age Population on Universal Credit and Not In Employment - Aberdeenshire Context (Aug 2023)



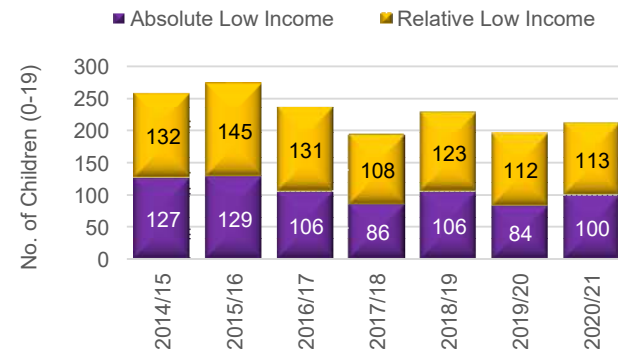
Alternative Claimant Count - Effective 'Unemployment Rate'



Macduff's Alternative Claimant Count (Unemployment Rate) - Aberdeenshire Context (Sep 2023)



Children in Low Income Families



% of Children (aged 0-19) in Low Income Families (2020/21)



Summary

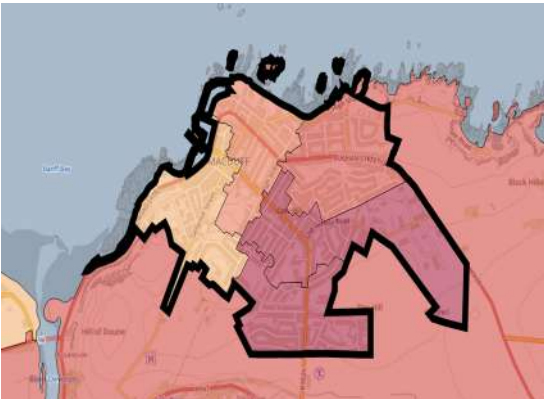
The number of people claiming Universal Credit (UC) - who are also in employment - has remained relatively steady over the last few months, contrary to the Shire-wide trend, which has increased. Latest figures show 6.5% of people aged 16-64 (who also have jobs) are claiming UC. This is towards the higher end of the spectrum in a Shire context. A similar picture emerges in relation to people on UC and not in employment.

Like Aberdeenshire, the unemployment rate in the IZ has fallen since the September 2020 peak of 3.8%. Latest data suggests approximately 2.7% of the Working Age population is currently out-of-work, which is higher than the Aberdeenshire rate (1.8%).

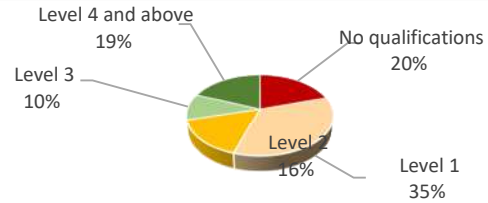
Children living in low-income families are relatively uncommon. However, recent increases suggest the issue may be coming more to the fore over recent years, particularly since 2020/21.

Macduff Economic Data (3 of 3)

People With No Qualifications, Census 2011



% of Employees per Qualification Type



Summary

The employment numbers per broad industrial group relate to the kind of jobs within the area, which may be filled by those living outwith the IZ.

Major industries in terms of jobs in the area include the Manufacturing sector, the Health sector, Construction and the Retail sector.

There has been a large growth in Education sector. Jobs in this industry have doubled since 2020.

Even with the growth in these type of jobs, There has been a 10% decrease in jobs across the IZ between 2020 and 2022, suggesting this IZ is still feeling the effects post-Covid.

The area also appears to have attracted a number of enterprises over the most recent year (i.e. companies with sales between £200k - £499).

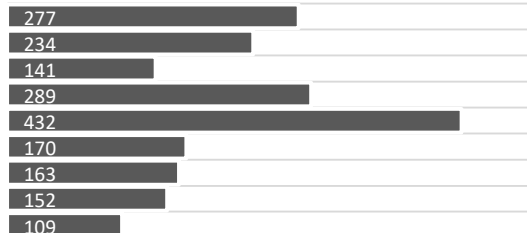
Approximate Employment Count per Broad Industrial Group, Macduff, 2020-22

Broad Industrial Group	2020	2021	2022	2020-22 % Diff.
Agriculture, forestry & fishing	50	75	75	50%
Mining, quarrying & utilities	10	10	0	-100%
Manufacturing	225	225	225	0%
Construction	125	125	125	0%
Motor trades	0	10	0	0%
Wholesale	20	30	20	0%
Retail	100	125	125	25%
Transport & storage (inc postal)	100	75	50	-50%
Accommodation & food services	100	125	100	0%
Information & communication	0	0	0	0%
Financial & insurance	0	0	0	0%
Property	0	0	0	0%
Professional, scientific & technical	50	50	50	0%
Business administration & support services	35	25	40	14%
Public administration & defence	20	20	20	0%
Education	50	100	100	100%
Health	300	300	100	-67%
Arts, entertainment, recreation & other services	40	50	75	88%
Total	1,225	1,345	1,105	-10%

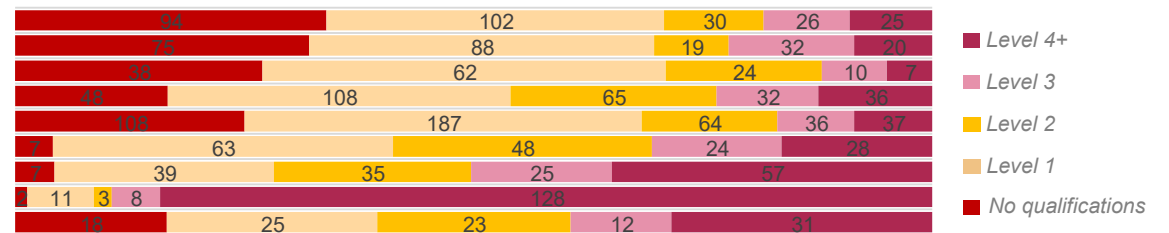
Approximate Number of Enterprises per Turnover Band (£), Macduff, 2021-23

Turnover	2021	2022	2023	2021-23 % Diff.
£1m+	0	0	0	0%
£500-999k	5	5	0	-100%
£200-499k	10	10	20	100%
£100-199k	35	40	30	-14%
£50-99k	20	25	30	50%
£0-49k	10	15	5	-50%

Employees per Occupation Type, Census 2011



Employees per Qualification & Occupation Type, Census 2011





Relatively sparse / rural

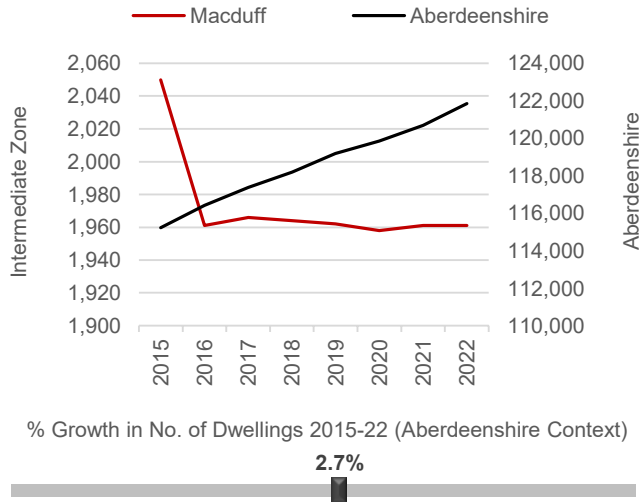
Dwellings per Hectare (2022)

15.00



Relatively dense / urban

Number of Dwellings, 2015-22



Summary

At 15.00 dwellings per hectare, this IZ is in the top range of the spectrum between the rural and urban extremes.

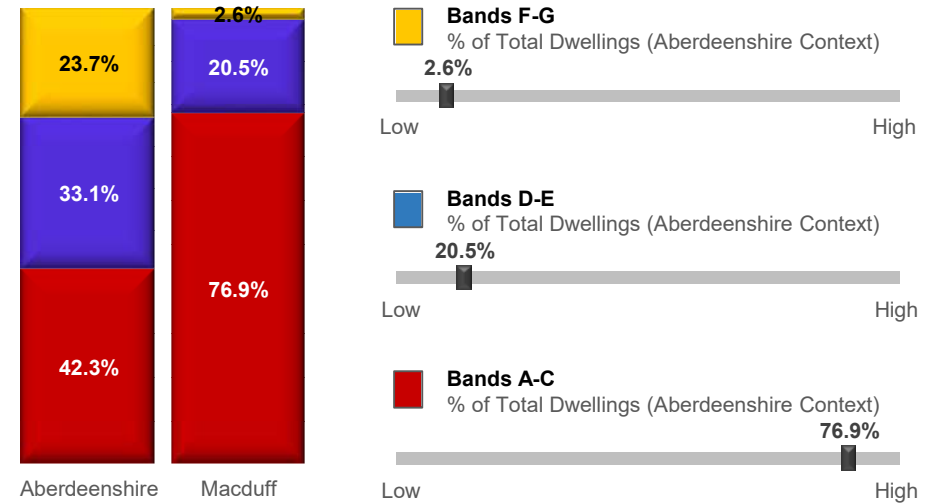
The number of dwellings in the IZ has increased by 2.7% since 2015, which is towards the middle of the spectrum in an Aberdeenshire context.

House building in the area has plateaued since 2016.

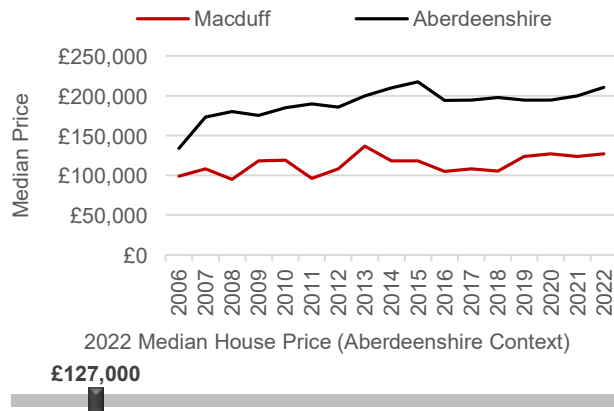
A relatively large proportion of the dwellings in this IZ (35.2%) fall within Council Tax Bands A-C. This puts the IZ towards the higher end of the spectrum. Relatively few properties fall within Bands F-G (2.6%).

The median house price is £127,000 which is significantly lower £83,995 lower than the Aberdeenshire average (£210,995).

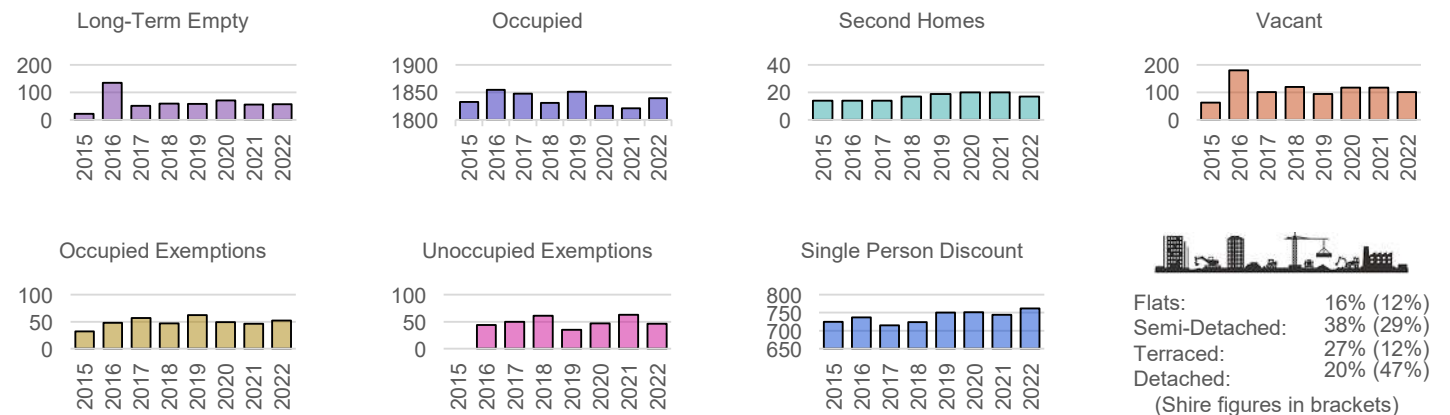
Proportion of Dwellings per Council Tax Band, 2022



Median Residential House Prices (Sales), 2006-22

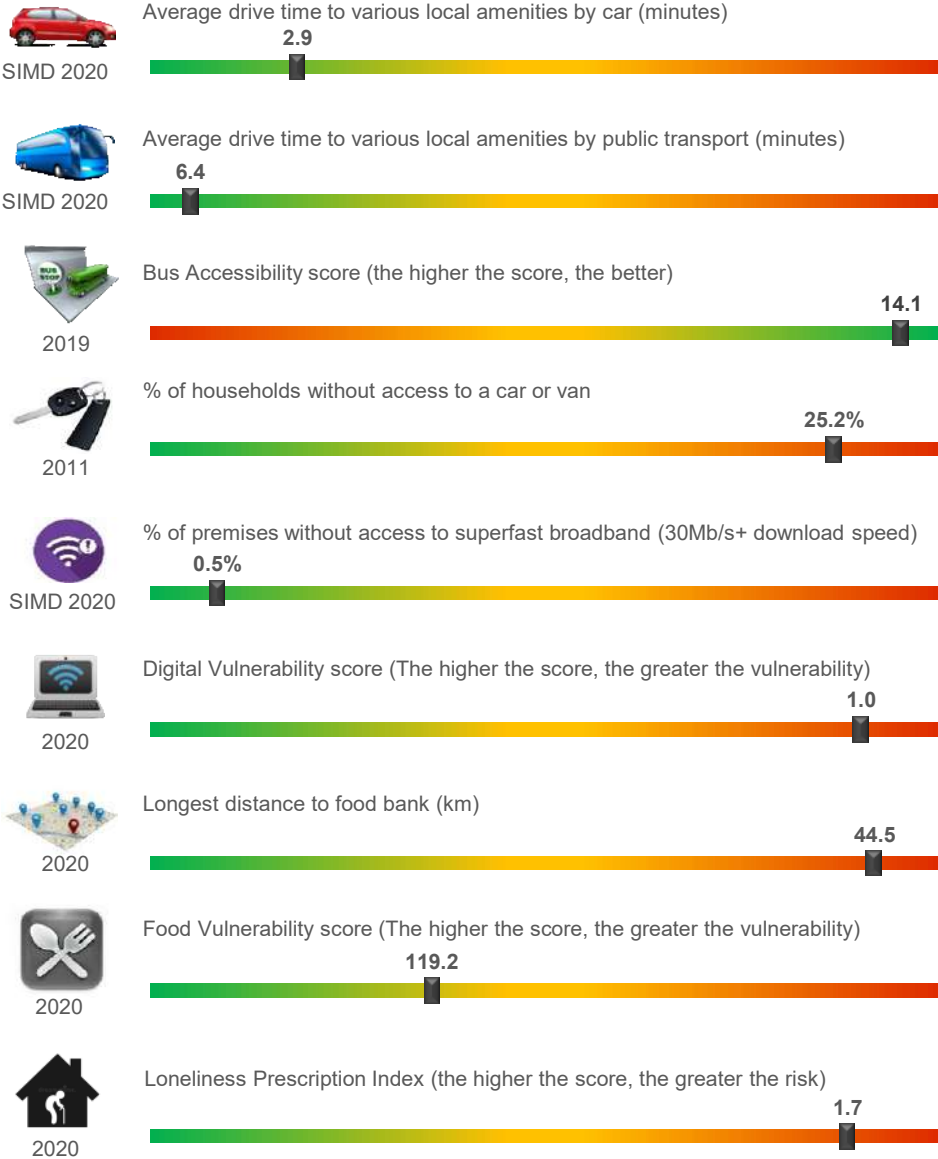


Housing Types, 2015-22 (Data on Flats, etc., relate to 2017 - the latest year for which data are available)

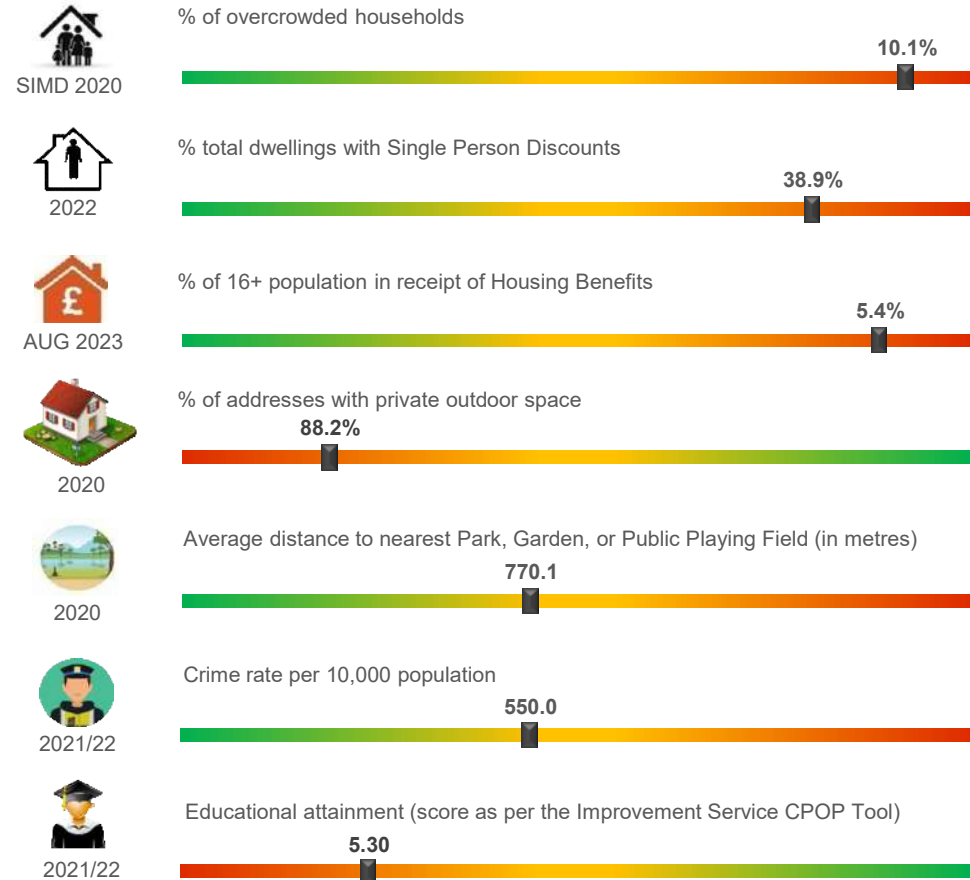


Macduff Other Socio-Economic Data

Geographic Access / Digital Connectivity / Food Vulnerability / Loneliness Proxy



Housing / Environment / Crime Rate / Educational Attainment



Summary

The percentage of households with access to a car or a van is relatively low. This will be in part due to the higher availability of public transport in this area the travel times to local amenities. Another consideration might be the cost of running and maintaining a vehicle. The % of dwellings with single person discounts and the % of 16+ population in receipt of Housing Benefits along with overcrowding is towards the higher end of the spectrum. Access to superfast broadband is good in the Macduff area however digital vulnerability is also high. The general IZ area has a relatively low % of addresses with private outdoor space - mainly because of the high % of flats the area (16%).