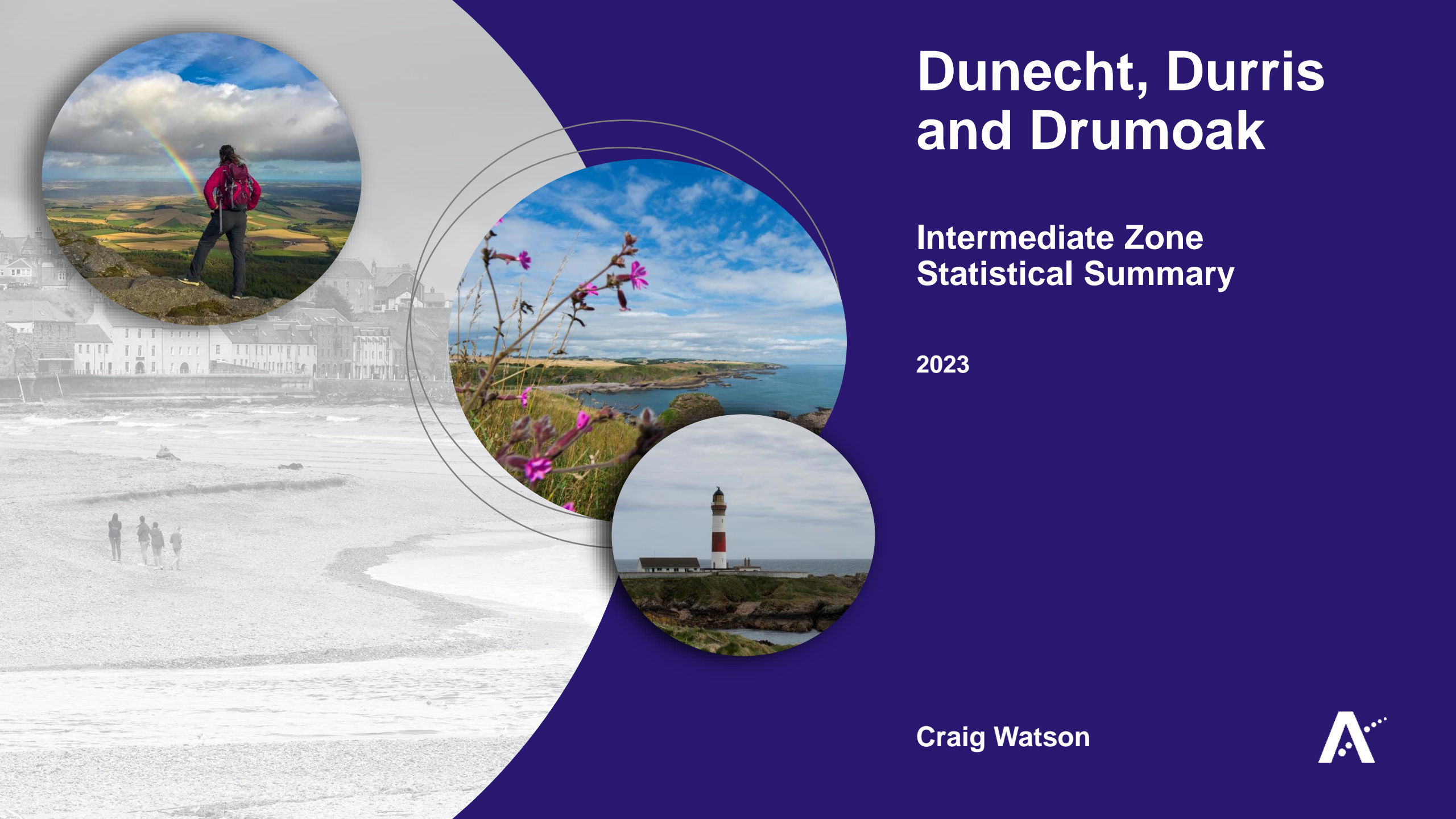


Dunecht, Durris and Drumoak

Intermediate Zone Statistical Summary

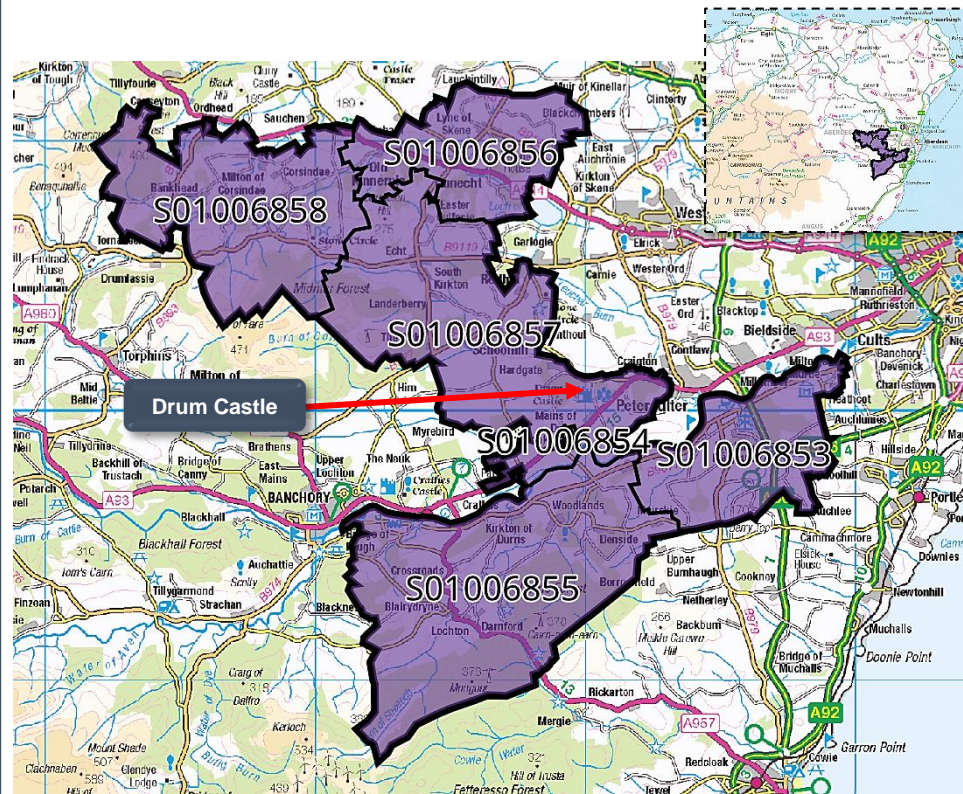
2023

Craig Watson

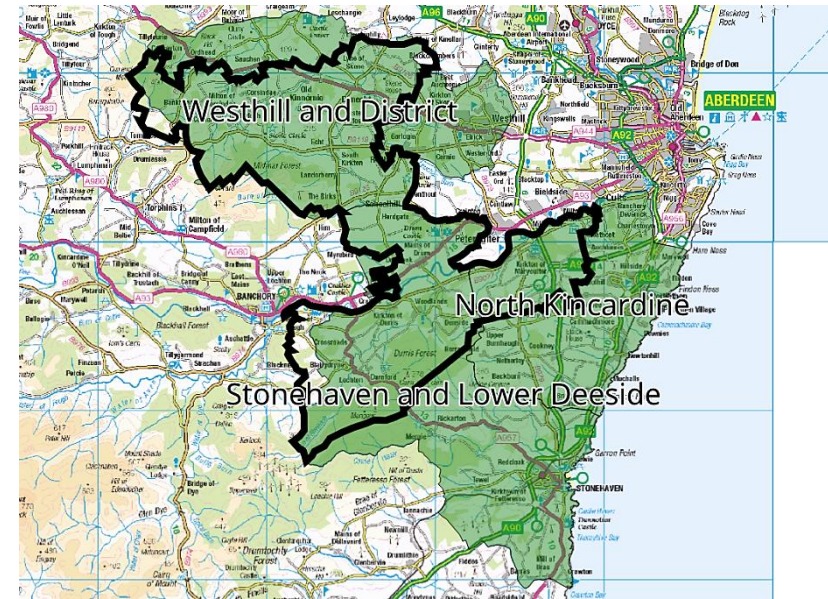


Dunecht, Durris and Drumoak

Data Zones Within the Intermediate Zone



Relevant Multi-Member Wards



Notes on the Maps

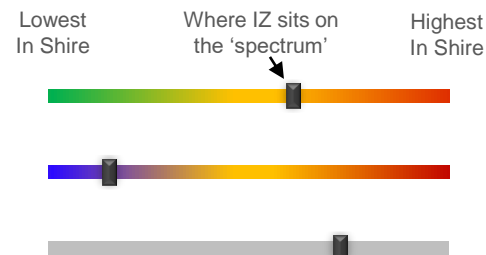
The map on the left shows the location and geographic area of the Dunecht, Durris & Drumoak Intermediate Zone. It contains 6 Data Zones.

Three MMWs straddle the Intermediate Zone (Westhill and District, North Kincardine and Stonehaven and Lower Deeside).

Spectrum Charts Explained

The following statistical pages frequently utilise spectrum charts as a visual aid to accompany an indicator. They are used to place the relevant Intermediate Zone (IZ) in the context of all other IZs in Aberdeenshire with regards to that indicator.

The charts to the right are examples of the spectrum charts used in this report. The black line represents where the IZ sits in the context of the highest and lowest figures in Aberdeenshire. If the black line is situated towards the left-hand side, the IZ recorded one of the lowest figures in Aberdeenshire. Conversely, if the black line is towards the right-hand side, it recorded one of the highest figures in Aberdeenshire.



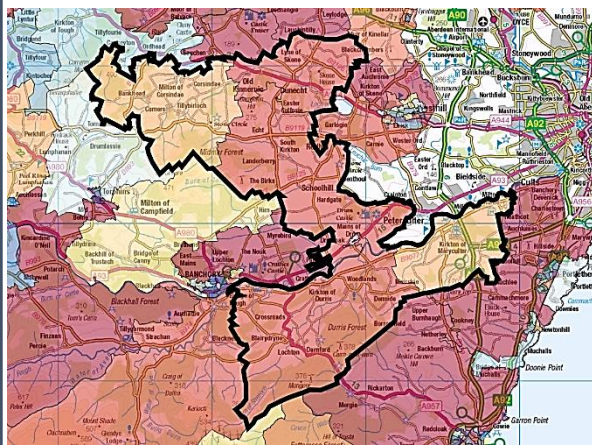
The green/red spectrum charts are the most common type. If the black line is situated towards the red end of the spectrum, it means the figure is objectively worse than most other IZs in Aberdeenshire and vice versa.

The blue/red spectrum charts are used in the demographic section to denote high population growth (red) and population decline (blue).

The grey spectrum charts are simply used to denote high and low in the context of Aberdeenshire, where the high / low figure is neither good nor bad. An example would be the proportion of dwellings that fall within Council Tax Bands F-G.

Dunecht, Durris and Drumoak Demographic Data

Map of Dunecht, Durris and Drumoak: Population Change (2014-2021)



Low Growth / Depopulation High Growth

Population Change per Data Zone, 2014 & 2021

Data Zone	2014	2021	% Difference
S01006853	969	963	-0.6%
S01006854	861	827	-3.9%
S01006855	780	840	7.7%
S01006856	712	744	4.5%
S01006857	1108	1215	9.7%
S01006858	660	648	-1.8%
Total	5090	5237	2.9%

The population in this IZ increased by 2.9% between 2014 and 2021, which is among the higher growth rates in Aberdeenshire over that period.

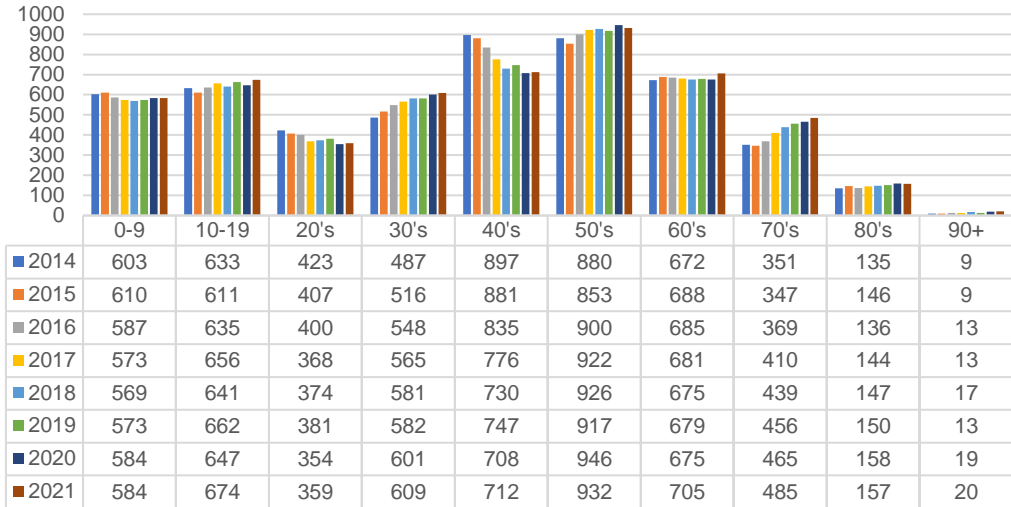
The largest percentage increase was seen in DZ S01006857, which is situated to the west and northwest of Peterculter, stretching from the outskirts of Drumoak in the south to Echt in the north, and beyond. This was driven by people aged 10-19, people in their 30's and those over the age of 70.

DZ S01006854 (which covers most of Drumoak) saw the greatest population decrease over the period. This is due to fewer people in their 30's, 40's, and 50's. This particular DZ also saw an increase in the number of people aged 70+.

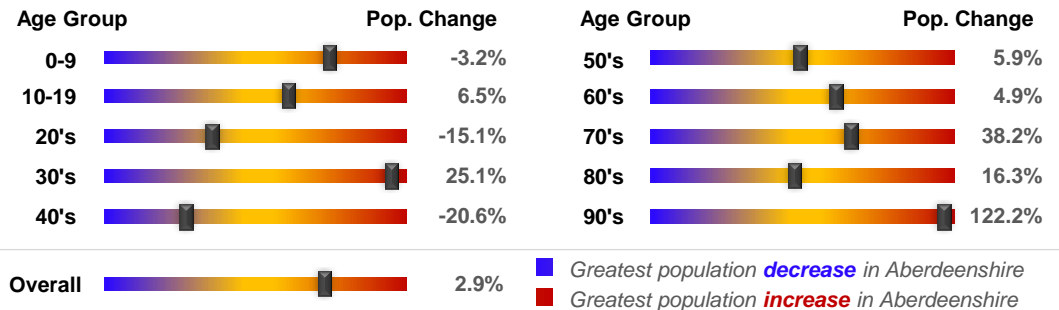
The IZ is home to a higher proportion of people in their 50's compared to Aberdeenshire as a whole (17.8% versus 15.4%). Although the gap has lessened over the past year. Conversely, The IZ is home to a lesser proportion of 20-somethings relative to the rest of Aberdeenshire (6.9% versus 9.3%). For some reason, this IZ has tended to have a proportionately low 20-something population compared to other IZs in Aberdeenshire.

The child population is relatively high relative to its total population but not markedly so. In absolute terms, DZ S01006857 is home to a relatively large number of younger people (<20). This DZ has a slightly younger profile than other DZs in the area, namely S01006858 in the west of the IZ (the general Echt area) and S01006853 in the eastern portion of the IZ (the general area surrounding Kirkton of Maryculter).

Population per Age Group, Dunecht, Durris and Drumoak, 2014-2021



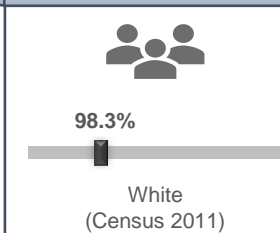
Rate of Population Change per Age Group, 2021 Compared to 2014



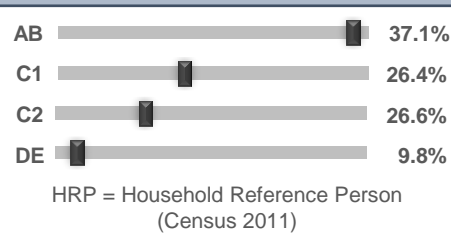
Country of Birth



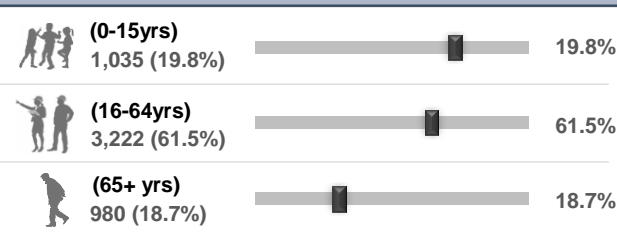
Ethnicity



Approximated Social Grade of HRP



Population per Broad Age Group, 2021



In 2021 5,237 people lived in Dunecht, Durris and Drumoak -- 1,035 (19.8%) were under 15 years of age, 3,222 (61.5%) were aged 16-64, and 980 (18.7%) were over 65.

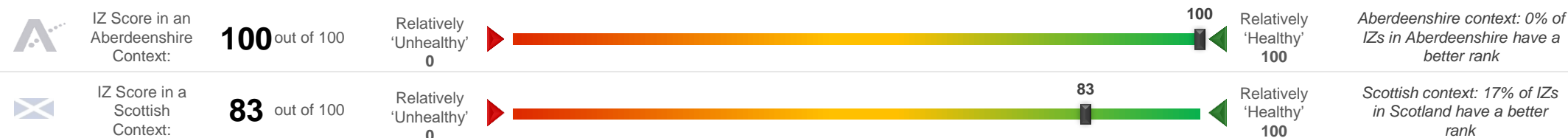
The black markers show where these percentages sit in the context of Aberdeenshire: left = low; right = high.

Dunecht, Durris and Drumoak Health Data (1 of 2)

SIMD 2020 Health Domain Rank		Universal Credit (UC) Limited Work Capability Households	Personal Independence Payments				
<p>Relatively Good Ranking ■ ■ ■ ■ Relatively Poor Ranking</p>		<p>No. of Households in receipt of Universal Credit</p> <p>Intermediate Zone</p> <p>Aberdeenshire</p> <p>% of Households where at least 1 occupant has limited work capability (May-2023) - Aberdeenshire Context</p> <p>1.9%</p>	<p>No. of Cases with Entitlement</p> <p>Intermediate Zone</p> <p>Aberdeenshire</p> <p>% of Working Age Population (16-64) Receiving PIPs (Jul-2023) - Aberdeenshire Context</p> <p>1.6%</p>				
<p>Day-to-Day Activities</p> <p>Proportion of people whose day-to-day activities are limited a little or a lot - Aberdeenshire Context (Census 2011)</p> <p>11.4%</p>	<p>Health Rating</p> <p>Proportion of people who rated their health as either 'good' or 'very good' - Aberdeenshire Context (Census 2011)</p> <p>91.4%</p>	<p>According to monthly health-related benefits data, the number of households on Universal Credit increased at the start of Covid but fell steadily up until August 2022. The number of households with Limited Work Capability or LWC (due to physical or mental health issues) has remained relatively high since that time, now affecting approximately 41 households. However, the IZ figure of 1.9% of households with at least 1 occupant assessed as having LWC is relatively low in the context of Aberdeenshire, albeit an increase on last year.</p> <p>A lower proportion of the Working Age Population (1.6%) receive Personal Independence Payments (PIPs). This helps with some of the extra costs caused by long-term disability, ill-health or terminal ill-health. The IZ trend has decreased in line with the Aberdeenshire trend over the past few months. Again, the 1.6% figure is relatively low compared to most other IZs in Aberdeenshire.</p> <p>According to SIMD 2020 data, DZ S01006856 has the best health ranking (Dunecht area) and S01006854 has the 'worst' (Drumoak). The DZs in this IZ area are among the least health deprived areas in Scotland.</p>					
SIMD 2020 Health Domain Indicators per each Data Zone in the Dunecht, Durris and Drumoak Intermediate Zone (compared to Aberdeenshire average)							
<p>SIMD Health Domain Indicator (Data Zones colour-coordinated with map) >></p>							
Health Domain Rank (see map for colour-coded rankings) (the higher, the better)	S01006853	S01006854	S01006855	S01006856	S01006857	S01006858	Shire
Comparative Illness Factor (Scotland = 100) (the lower, the better)	6923	5405	6851	6928	6485	6788	5,254
Emergency stays in hospital (Scotland = 100) (the lower, the better)	25	45	25	15	30	25	58
Hospital stays related to alcohol misuse (Scotland = 100) (the lower, the better)	41.7	80.4	57.2	56.0	75.8	55.6	71.5
Hospital stays related to drug misuse (Scotland = 100) (the lower, the better)	3.8	36.7	8.9	20.3	24.8	32.0	45.4
Proportion of live singleton births of lowbirth weight (the lower, the better)	15.3	38.1	0.0	0.0	0.0	0.0	30
Proportion of population being prescribed drugs for anxiety, depression or psychosis	11.5%	0.0%	5.0%	0.0%	4.3%	6.7%	4.0%
Standardised Mortality Ratio (Scotland = 100) (the lower, the better)	9.5%	15.7%	9.2%	10.8%	12.9%	9.2%	15.6%
	44	83	65	47	63	94	85

Dunecht, Durris and Drumoak Health Data (2 of 2)

Dunecht, Durris and Drumoak's position on the 'Health Spectrum' – Aberdeenshire and Scottish Context (the higher the score, the better)



Selection of ScotPHO indicators, Dunecht, Durris and Drumoak IZ compared to Aberdeenshire & Scotland (latest data)

Indicator	Latest Available Figures				IZ Trend	Indicator Measurement
	IZ	IZ's latest figure compared to:				
		Aberdeenshire	Scotland			
Alcohol-related hospital stays	29.2	-89.0%		-95.2%	Down	Rate per 100,000 pop.
All-cause mortality among the 15-44 year olds	60.9	-35.5%		-48.0%	Down	Rate per 100,000 pop.
Babies exclusively breastfed at 6-8 weeks	57.0	16.5%		25.2%	Down	% of babies with a valid feeding status
Bowel screening uptake	77.1	4.1%		11.6%	Up	% of eligible people (aged 50-74)
Child dental health in primary 1	86.0	7.2%		12.9%	Up	% of P1 pupils
Child dental health in primary 7	95.5	15.7%		20.5%	Up	% of P7 pupils
Child healthy weight in primary 1	78.1	0.7%		8.3%	Down	% of P1 pupils
Deaths all ages	692.2	-34.6%		-41.4%	Down	Rate per 100,000 pop.
Developmental concerns at 27-30 months	1.3	-1.5%		-13.3%	Down	% of children reviewed
Early deaths from cancer (<75)	76.1	-42.3%		-49.1%	Down	Rate per 100,000 pop.
Early deaths from coronary heart disease (<75)	11.7	-69.0%		-77.7%	Down	Rate per 100,000 pop.
Female life expectancy	89.7	9.6%		11.2%	Up	Life expectancy at birth in years
Healthy birth weight	78.0	-5.1%		-6.2%	Up	% of all singleton births
Immunisation uptake at 24 months - 6 in 1	98.8	1.0%		1.8%	Up	% of children in relevant age group
Immunisation uptake at 24 months - MMR	98.2	3.4%		3.8%	Up	% of children in relevant age group
Male life expectancy	81.9	5.5%		7.0%	Up	Life expectancy at birth in years
Maternal obesity	19.3	-5.2%		-6.8%	Up	% of women at antenatal booking
Patients (65+) with multiple A&E hospitalisations	7036.9	11.8%		3.1%	Down	Rate per 100,000 pop.
Patients hospitalised with asthma	19.6	-38.7%		-71.4%	Down	Rate per 100,000 pop.
Patients hospitalised with COPD	84.2	-28.1%		-59.4%	Down	Rate per 100,000 pop.
Patients hospitalised with coronary heart disease	291.7	-0.8%		-14.6%	Down	Rate per 100,000 pop.
Patients with emergency hospitalisations	4879.6	-7.6%		-32.6%	Down	Rate per 100,000 pop.
Premature births	3.5	-5.7%		-4.7%	Down	% of all live births
Uptake of the HPV vaccine in S3 girls	90.8	1.4%		6.0%	Down	% of S3 girls

Based on the 24 health-related indicators in the table, this IZ has the healthiest profile in Aberdeenshire and one of the healthiest in Scotland. Only 20% of Scotland's almost 7,000 IZs have a better health ranking than this IZ. This was the same ranking as the previous reporting cycle.

The area compares favourably to most other areas in Scotland in terms of a range of health-related outcomes, particularly in relation to alcohol-related hospital stays, early deaths from coronary heart disease, female life expectancy, developmental concerns at 27-30 months, bowel screening uptake, and an array of hospitalisation rates for various illnesses.

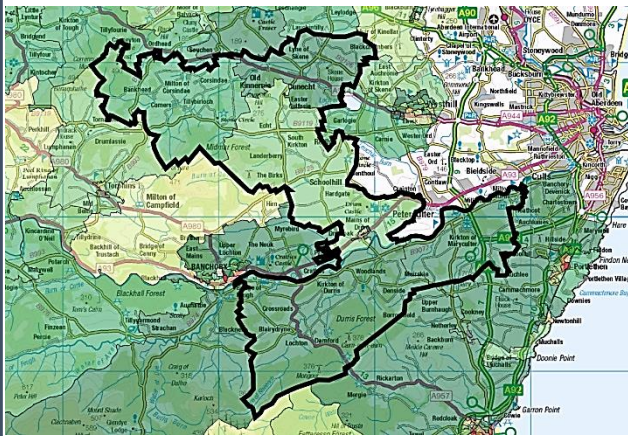
Issues that may require further investigation include:

- Healthy birthweight; and
- Patients (aged 65+) with multiple emergency hospitalisations.

With regards to each of the indicators listed above the IZ compares less favourably to other areas in Aberdeenshire and, in some instances, Scotland (and/or the trend is worsening).

Dunecht, Durris and Drumoak Economic Data (1 of 3)

Rank of Household Income per Data Zone (2023)



In terms of household income, this IZ is one of the most affluent in Aberdeenshire. The median household income in 2023 equated to £57,369, which is £15,613 higher than the Shire average (£41,756). Although significant, this gap reduced year-on-year.

Median household income ranges from £48,528 in DZ S01006854 (Drumoak) to £64,589 in DZ S01006856 (which covers a large area around Dunecht).

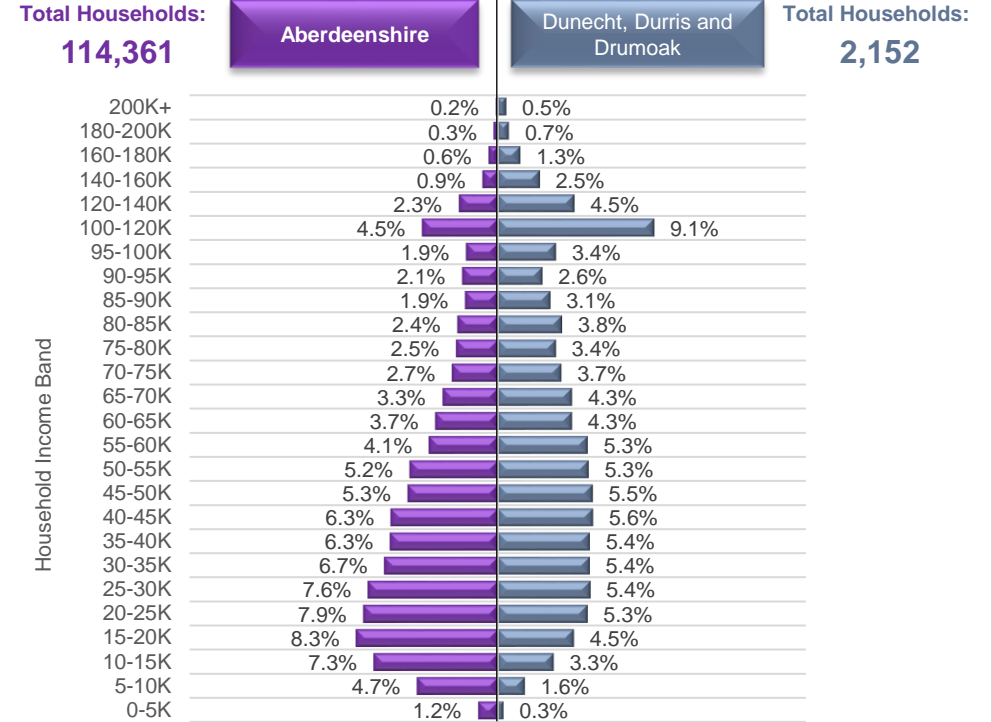
Approximately 1.9% of households in this IZ earn less than £10,000 per year, which is lower-than-average (5.3%). This equates to roughly 41 households. The area on the south side of Drumoak (Keithmuir Gardens / Road) tends to contain a higher-than-average proportion of such households in the context of this IZ.

High income households tend to be situated in the Hillside area around Kirkton of Maryculter, stretching westwards, as well as the area to the north of Dunecht.

Household Income per Data Zone (2023)

Data Zone	Households	Average Income	Median Income	Lower Quartile Income
S01006853	381	£ 71,894	£ 64,543	£ 40,073
S01006854	376	£ 57,185	£ 48,528	£ 27,153
S01006855	331	£ 68,712	£ 61,038	£ 37,667
S01006856	295	£ 71,761	£ 64,589	£ 40,468
S01006857	513	£ 61,054	£ 53,191	£ 31,619
S01006858	256	£ 63,939	£ 56,494	£ 34,418

Household Income per Band, Dunecht, Durris and Drumoak & Aberdeenshire (2023)



© CACI Limited 1996 - 2022 This report shall be used solely for academic, personal and/or non-commercial purposes. The applicable copyright notices can be found at <https://www.caci.co.uk/copyrightnotices.pdf>

Median Household Income (2023)



£57,369

Aberdeenshire: £41,756

£57,369



% of Households Earning Less Than £10k (2023)



<£10K

1.9%

Aberdeenshire: 5.3%

1.9%



% of Households Earning More Than £100k (2023)



>£100K

18.6%

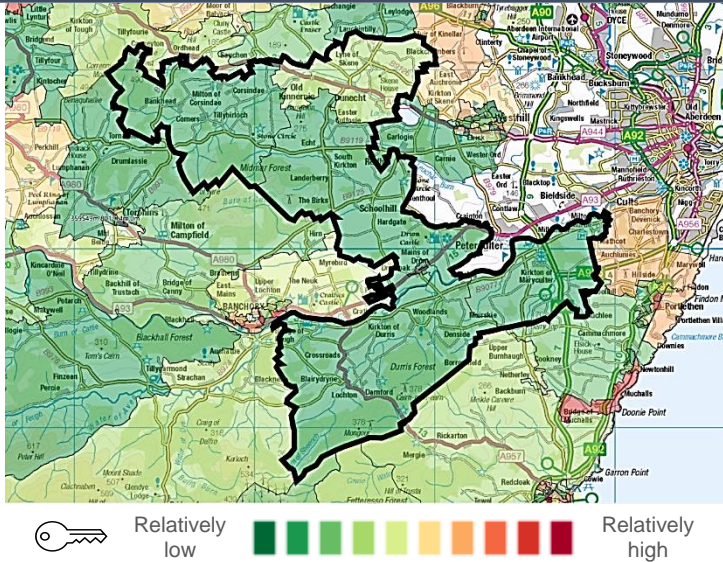
Aberdeenshire: 10.1%

18.6%

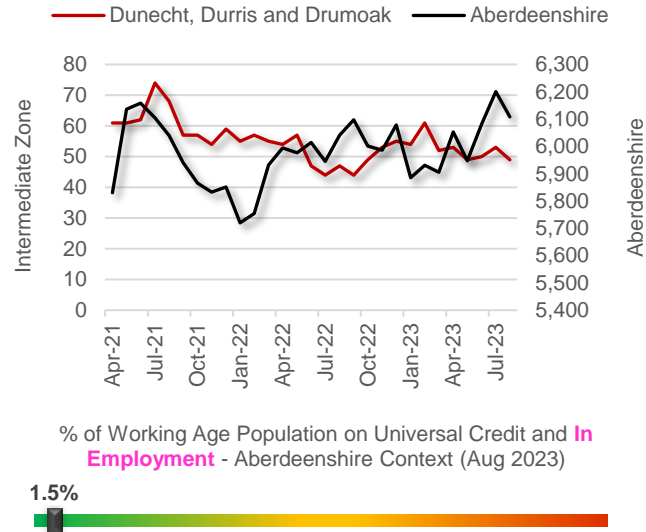


Dunecht, Durris and Drumoak Economic Data (2 of 3)

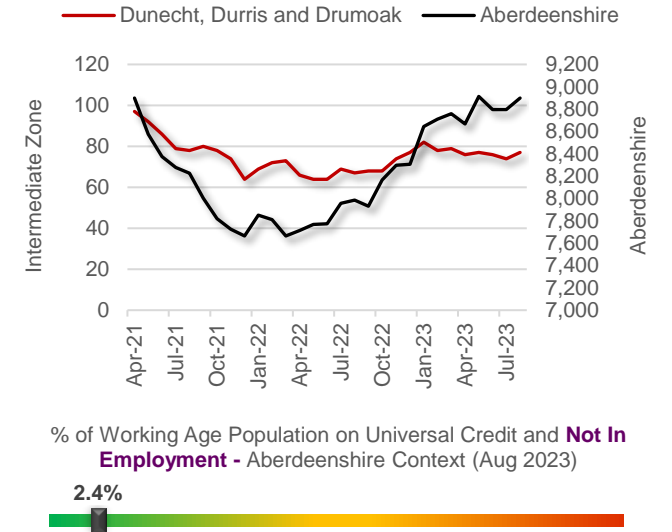
Latest Unemployment Rate - Ranking per Data Zone



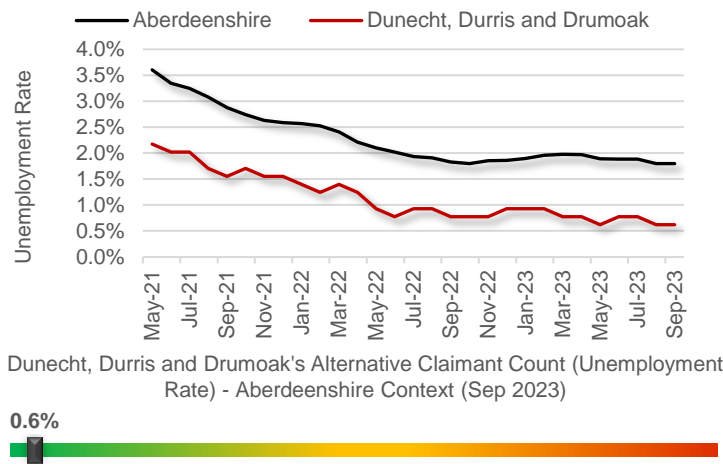
People on Universal Credit - In Employment



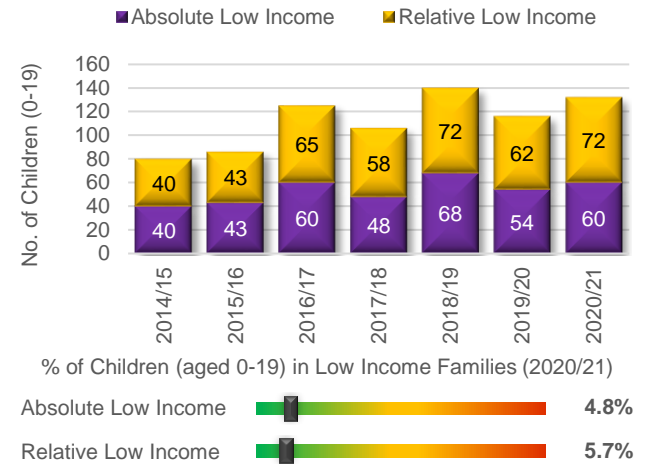
People on Universal Credit - Not In Employment



Alternative Claimant Count - Effective 'Unemployment Rate'



Children in Low Income Families



Summary

The number of people claiming Universal Credit (UC) - who are also in employment - has more or less steadily declined since the post-Covid increase. Latest figures show 1.5% of people aged 16-64 (who also have jobs) are claiming UC. This is one of the lowest rates in Aberdeenshire.

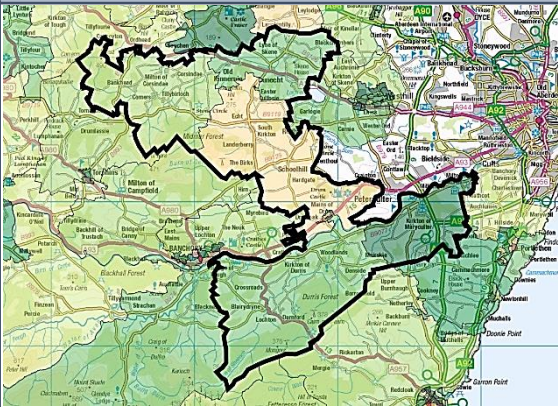
Like Aberdeenshire, the unemployment rate in the IZ has fallen substantially since the December 2020 peak of 2.9%. Latest data suggests approximately 0.6% of the Working Age population is currently out-of-work, which is among the lowest rates in Aberdeenshire, and half the rate of last year. The rate ranges from 0.0% (S01006858, which covers the general Echt area) to 0.9% (S01006856, which covers a large area around Dunecht. This DZ is also a high-income area). No DZ unemployment rate in this IZ exceeds the Aberdeenshire-wide rate (1.8%), and this has been the case for many months.

The proportion of children living in low-income households is among the lowest in Aberdeenshire. However, numbers have increased over the most recent year, falling just shy of the 2018/19 peak.

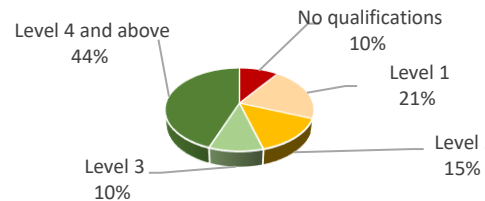
Economic Indicators

Dunecht, Durris and Drumoak Economic Data (3 of 3)

People With No Qualifications, Census 2011



% of Employees per Qualification Type



Summary

The employment numbers per broad industrial group relate to the kind of jobs within the area, which may be filled by those living outwith the IZ.

There is no one dominant industry within the IZ with jobs tending to be spread among a number of them. The main ones include the Professional sector, Transport & storage, Accommodation & food services, Construction, and Business admin.

The number of jobs in the IZ has decreased over the last few years, with the 2019 to 2020 period experiencing a relatively large swing to the downside. The number of jobs have remained relatively static since then.

At more granular level, jobs in hotels and similar accommodation increased quite considerably in 2022 compared to the previous year suggesting a post-Covid, rebound in terms of this specific occupation type.

A rebound in the number of large enterprises has also taken place. The area now plays host to more enterprises with annual sales exceeding £0.5m, largely thanks to the Construction sector.

Approximate Employment Count per Broad Industrial Group, Dunecht, Durris and Drumoak, 2020-22

Broad Industrial Group	2020	2021	2022	2020-22 % Diff.
Agriculture, forestry & fishing	50	75	50	0%
Mining, quarrying & utilities	50	50	40	-20%
Manufacturing	75	75	75	0%
Construction	175	225	225	29%
Motor trades	50	50	50	0%
Wholesale	5	0	10	100%
Retail	75	75	75	0%
Transport & storage (inc postal)	200	175	150	-25%
Accommodation & food services	200	100	150	-25%
Information & communication	75	45	35	-53%
Financial & insurance	0	0	0	0%
Property	125	150	100	-20%
Professional, scientific & technical	250	225	250	0%
Business administration & support services	150	150	175	17%
Public administration & defence	0	0	0	0%
Education	75	100	100	33%
Health	30	30	25	-17%
Arts, entertainment, recreation & other services	50	75	75	50%
Total	1,635	1,600	1,585	-3%

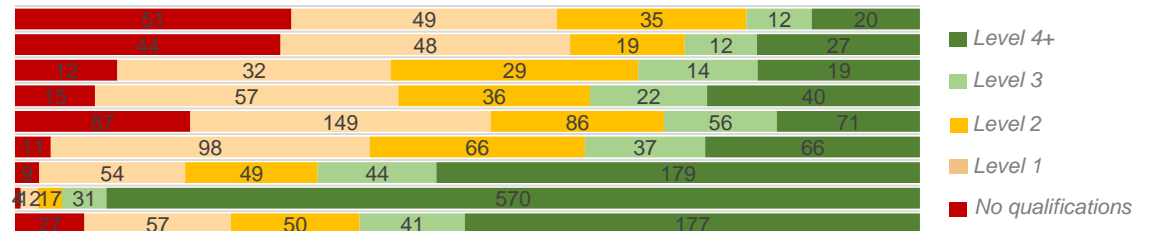
Approximate Number of Enterprises per Turnover Band (£), Dunecht, Durris and Drumoak, 2021-23

Turnover	2021	2022	2023	2021-23 % Diff.
£1m+	5	15	10	100%
£500-999k	15	15	25	67%
£200-499k	35	50	40	14%
£100-199k	145	120	115	-21%
£50-99k	90	85	65	-28%
£0-49k	100	120	105	5%

Employees per Occupation Type, Census 2011

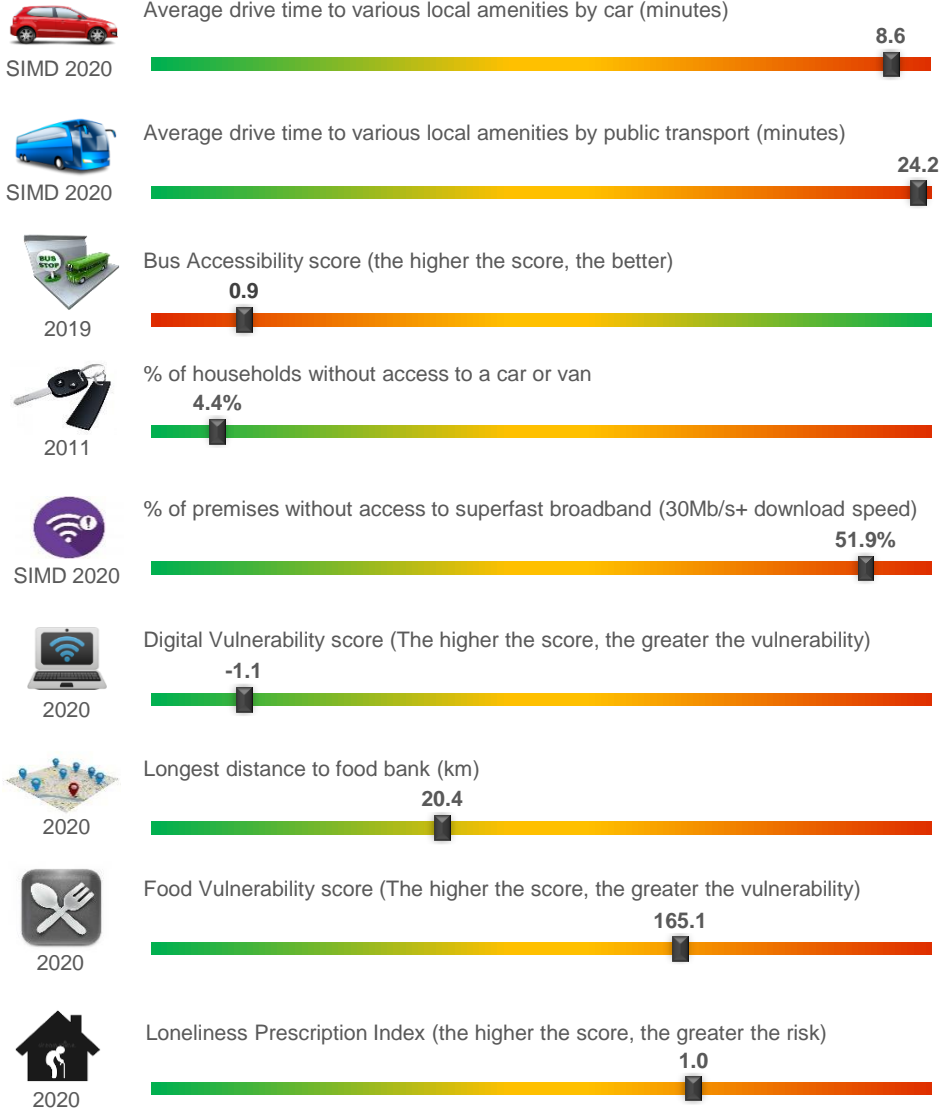
Elementary occupations	167
Process, plant and machine operatives	150
Sales and customer service occupations	106
Caring, leisure and other service occupations	170
Skilled trades occupations	449
Administrative and secretarial occupations	278
Associate professional and technical...	335
Professional occupations	634
Managers, directors and senior officials	352

Employees per Qualification & Occupation Type, Census 2011

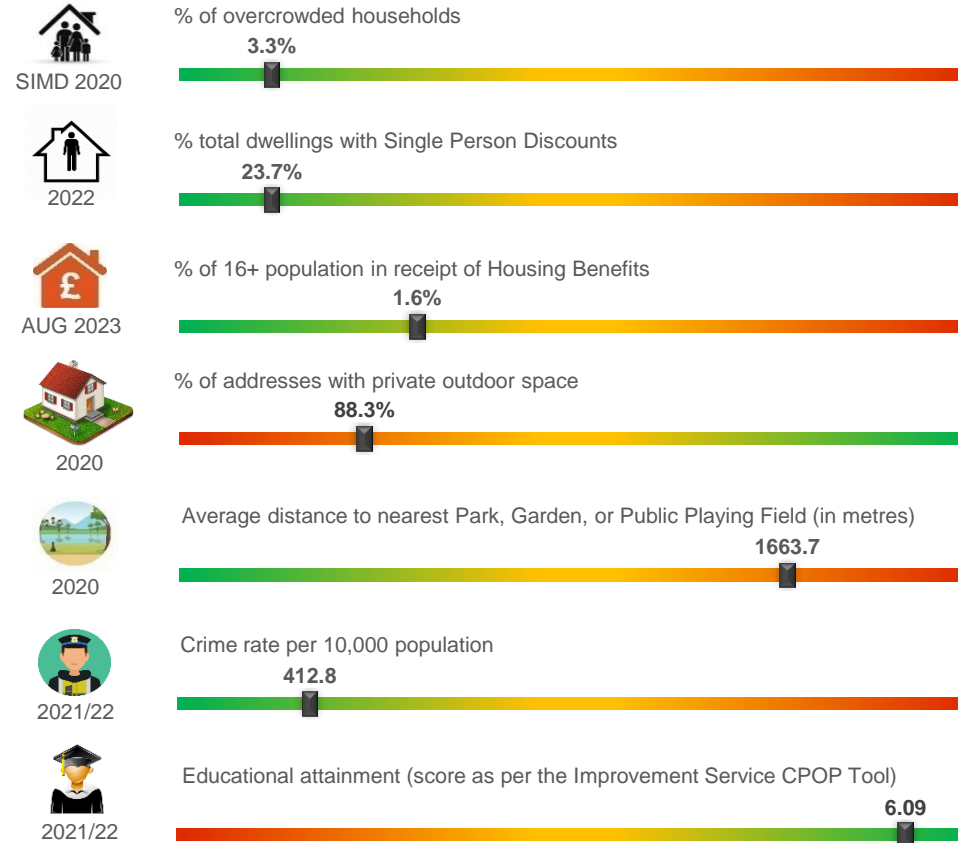


Dunecht, Durris and Drumoak Other Socio-Economic Data

Geographic Access / Digital Connectivity / Food Vulnerability / Loneliness Proxy



Housing / Environment / Crime Rate / Educational Attainment



Summary

Perhaps due to the rural nature of the area, the IZ may be said to suffer somewhat in terms of the 'remoteness' indicators. For example, drive times to various local amenities by car and via public transport are among the highest in Aberdeenshire. And bus accessibility is among the poorest.

Access to superfast broadband is also sub-optimal, with over half of the premises in the region unable to access it. Sub-optimal access may be experienced by residents in the general region surrounding Cairnshee Wood in the south of the IZ. Other areas include the region either side of Midmar Forest, the area either side of the A956 approaching the A90 roundabout (near Kirkton of Maryculter), and around Old Kinnernie near the A944.