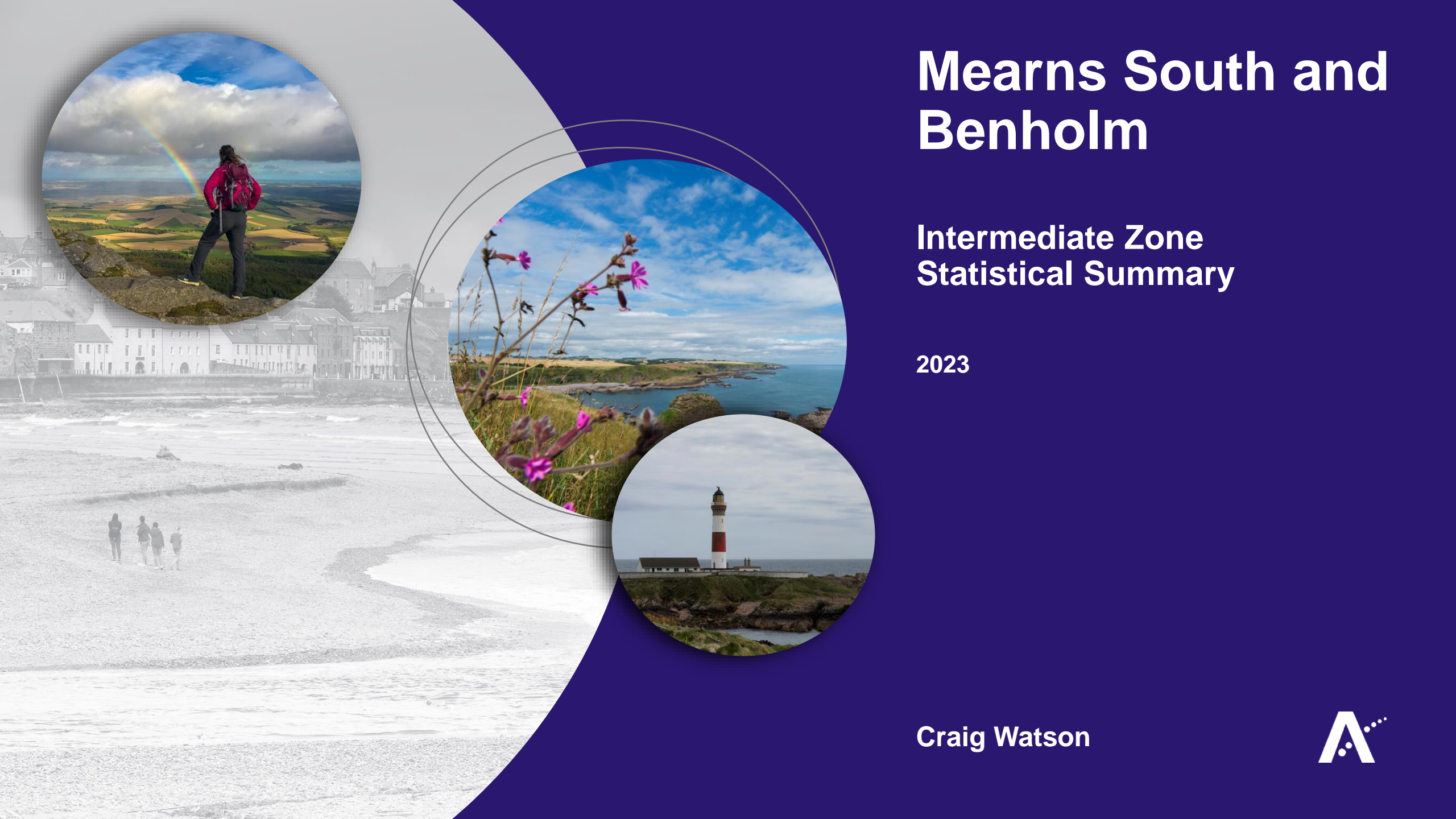


Mearns South and Benholm

Intermediate Zone Statistical Summary

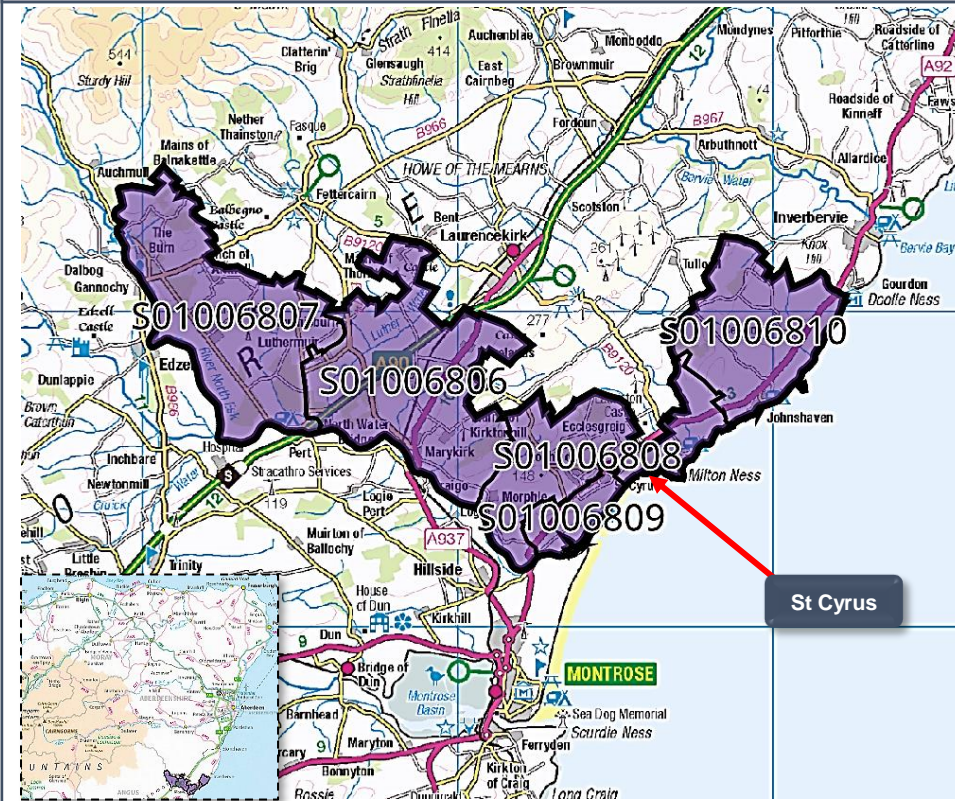
2023

Craig Watson

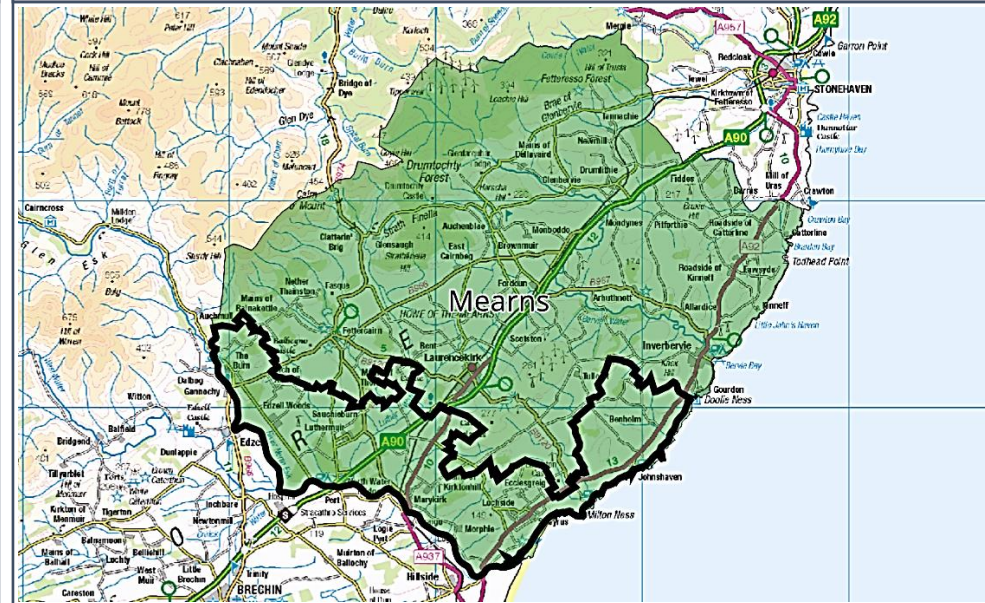


Mearns South and Benholm

Data Zones Within the Intermediate Zone



Relevant Multi-Member Wards



Notes on the Maps

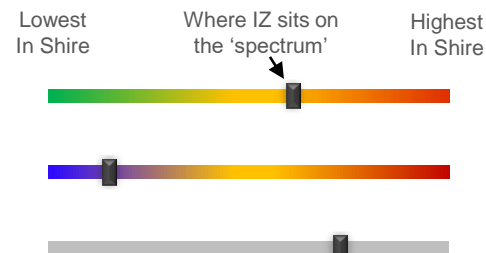
The map on the left shows the location and geographic area of the Mearns South & Benholm Intermediate Zone. It contains 5 Data Zones.

Only one MMW straddles the Intermediate Zone (Mearns).

Spectrum Charts Explained

The following statistical pages frequently utilise spectrum charts as a visual aid to accompany an indicator. They are used to place the relevant Intermediate Zone (IZ) in the context of all other IZs in Aberdeenshire with regards to that indicator.

The charts to the right are examples of the spectrum charts used in this report. The black line represents where the IZ sits in the context of the highest and lowest figures in Aberdeenshire. If the black line is situated towards the left-hand side, the IZ recorded one of the lowest figures in Aberdeenshire. Conversely, if the black line is towards the right-hand side, it recorded one of the highest figures in Aberdeenshire.



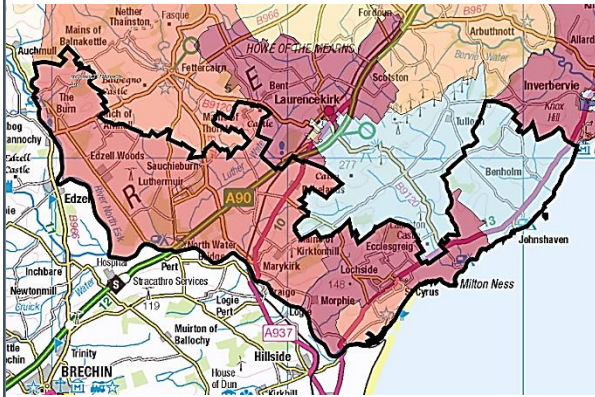
The green/red spectrum charts are the most common type. If the black line is situated towards the red end of the spectrum, it means the figure is objectively worse than most other IZs in Aberdeenshire and vice versa.

The blue/red spectrum charts are used in the demographic section to denote high population growth (red) and population decline (blue).

The grey spectrum charts are simply used to denote high and low in the context of Aberdeenshire, where the high / low figure is neither good nor bad. An example would be the proportion of dwellings that fall within Council Tax Bands F-G.

Mearns South and Benholm Demographic Data

Map of Mearns South and Benholm: Population Change (2014-2021)



Low Growth / Depopulation (Blue) High Growth (Red)

Population Change per Data Zone, 2014 & 2021

Data Zone	2014	2021	% Difference
S01006806	1030	1096	6.4%
S01006807	577	639	10.7%
S01006808	645	719	11.5%
S01006809	827	852	3.0%
S01006810	883	829	-6.1%
Total	3962	4135	4.4%

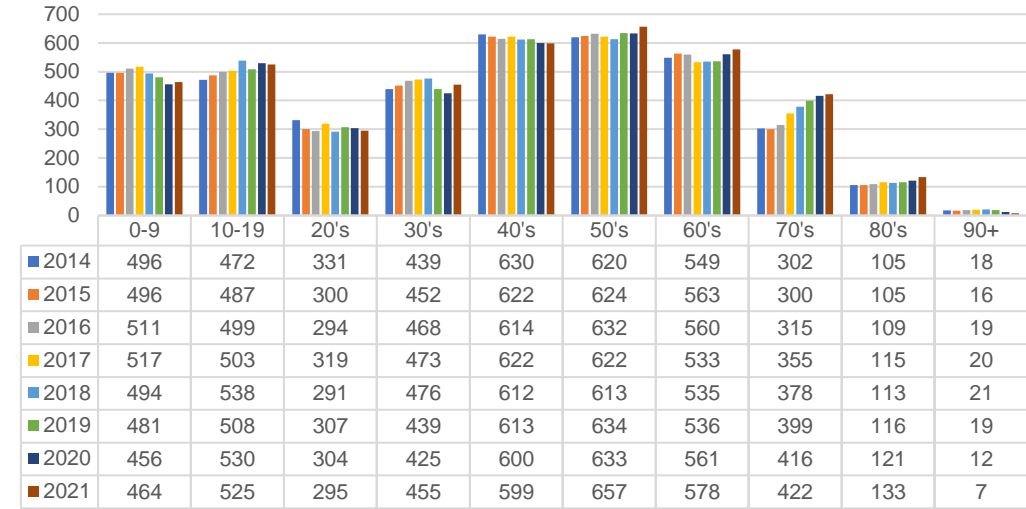
The population in this IZ increased by 4.4% between 2014 and 2021, which is among the greatest percentage increases in Aberdeenshire over that period. This is largely thanks to growth in two DZs - S01006807 and S01006808. The former is located in the western portion of the IZ (in Edzell Woods, etc.), the latter is in the eastern portion (in and around Lochside, stretching north towards Johnshaven).

Perhaps unusually, the greatest numerical gains were seen in age groups at the opposite ends of the spectrum - those in their 70's increased by 120 between 2014 and 2021 - a 40% increase (one of the greatest in the Shire). St Cyrus and the surrounding area is home to a relatively large proportion of people in their 70's and 80's relative to the area's total population.

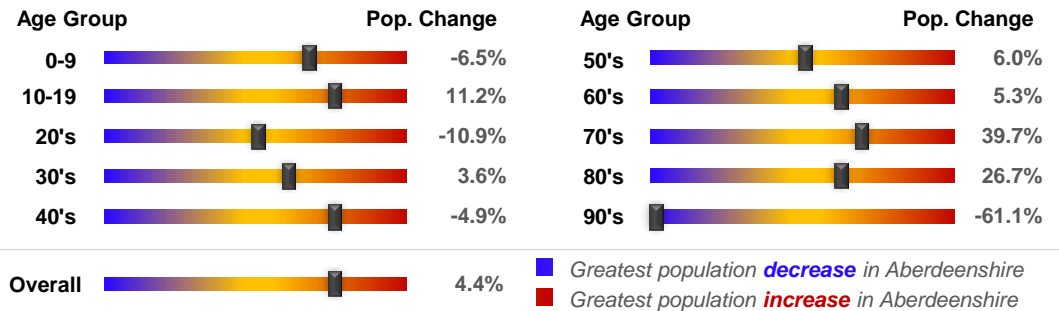
The 10-19 age group also saw sizeable gains - an additional 53 people were registered in this age group since 2014, which equates to an 11% increase. Again, this is one of the greatest percentage increases for this age group in the Shire.

Approximately 19.2% of the population in this IZ are aged between 0 and 15, which is relatively high in the context of Aberdeenshire. A large number of younger people tend to reside in DZ S01006806, which covers the central portion of the IZ (Marykirk, Luthermuir environs). In proportionate terms, DZ S01006807 (Edzell Woods, etc.) is also home to a relatively large proportion of young people.

Population per Age Group, Mearns South and Benholm, 2014-2021



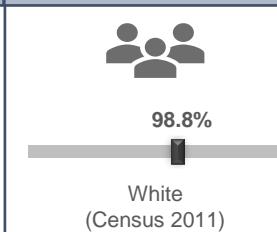
Rate of Population Change per Age Group, 2021 Compared to 2014



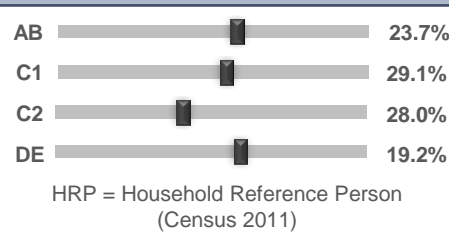
Country of Birth



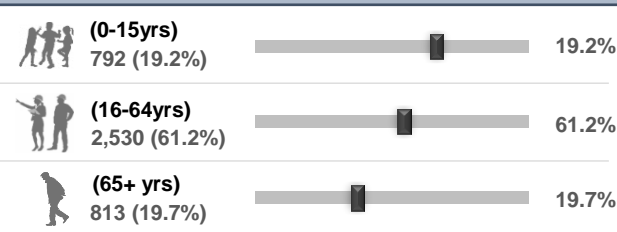
Ethnicity



Approximated Social Grade of HRP



Population per Broad Age Group, 2021



In 2021 4,135 people lived in Mearns South and Benholm -- 792 (19.2%) were under 15 years of age, 2,530 (61.2%) were aged 16-64, and 813 (19.7%) were over 65.

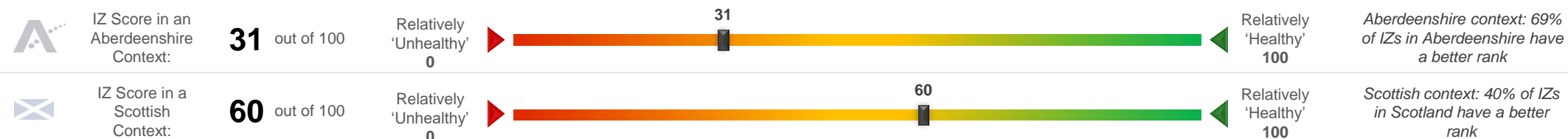
The black markers show where these percentages sit in the context of Aberdeenshire: left = low; right = high.

Mearns South and Benholm Health Data (1 of 2)

SIMD 2020 Health Domain Rank		Universal Credit (UC) Limited Work Capability Households	Personal Independence Payments				
		<p>No. of Households in receipt of Universal Credit</p> <p>% of Households where at least 1 occupant has limited work capability (May-2023) - Aberdeenshire Context</p> <p style="text-align: center;">4.0%</p>	<p>No. of Cases with Entitlement</p> <p>% of Working Age Population (16-64) Receiving PIPs (Jul-2023) - Aberdeenshire Context</p> <p style="text-align: center;">4.2%</p>				
<p>Day-to-Day Activities</p> <p>Proportion of people whose day-to-day activities are limited a little or a lot - Aberdeenshire Context (Census 2011)</p> <p style="text-align: center;">15.6%</p>	<p>Health Rating</p> <p>Proportion of people who rated their health as either 'good' or 'very good' - Aberdeenshire Context (Census 2011)</p> <p style="text-align: center;">86.7%</p>	<p>According to monthly health-related benefits data, the number of households on Universal Credit increased at the start of Covid and remained relatively steady since the peak in March 2021. The number of households with Limited Work Capability or LWC (due to physical or mental health issues) has likewise increased and remained relatively high throughout. The IZ figure of 4.0% of households with at least 1 occupant assessed as having LWC is among the highest in Aberdeenshire, a significant increase on last year. Approximately 68 households are now affected, up from 32 in April 2021.</p> <p>A higher proportion of the Working Age Population (4.2%) receive Personal Independence Payments (PIPs). This helps with some of the extra costs caused by long-term disability, ill-health or terminal ill-health. The IZ trend has generally followed the wider Aberdeenshire trends over the past couple of years. The 4.2% figure is on the high side in an Aberdeenshire context.</p> <p>According to SIMD 2020 data, DZ S01006808 has the best health ranking and S01006809 has the worst. The best ranking area is in and around Lochside, stretching north towards Johnshaven, and the worst is St Cyrus & environs. All DZ rankings are relatively good in a national context.</p>					
<p>SIMD 2020 Health Domain Indicators per each Data Zone in the Mearns South and Benholm Intermediate Zone (compared to Aberdeenshire average)</p>							
<p>SIMD Health Domain Indicator (Data Zones colour-coordinated with map) >></p>		<p>S01006806</p>	<p>S01006807</p>	<p>S01006808</p>	<p>S01006809</p>	<p>S01006810</p>	<p>Shire</p>
<p>Health Domain Rank (see map for colour-coded rankings) (the higher, the better)</p>		5727	5164	6659	4199	4923	5,254
<p>Comparative Illness Factor (Scotland = 100) (the lower, the better)</p>		55	60	35	75	65	58
<p>Emergency stays in hospital (Scotland = 100) (the lower, the better)</p>		65.9	61.6	58.0	77.6	80.2	71.5
<p>Hospital stays related to alcohol misuse (Scotland = 100) (the lower, the better)</p>		13.7	24.7	0.0	124.6	12.3	45.4
<p>Hospital stays related to drug misuse (Scotland = 100) (the lower, the better)</p>		14.5	51.9	0.0	20.8	17.7	30
<p>Proportion of live singleton births of lowbirth weight (the lower, the better)</p>		2.9%	3.8%	8.7%	6.3%	7.4%	4.0%
<p>Proportion of population being prescribed drugs for anxiety, depression or psychosis</p>		12.9%	17.3%	12.3%	16.2%	15.7%	15.6%
<p>Standardised Mortality Ratio (Scotland = 100) (the lower, the better)</p>		81	84	69	80	89	85

Mearns South and Benholm Health Data (2 of 2)

Mearns South and Benholm's position on the 'Health Spectrum' – Aberdeenshire and Scottish Context (the higher the score, the better)



Selection of ScotPHO indicators, Mearns South and Benholm IZ compared to Aberdeenshire & Scotland (latest data)

Indicator	Latest Available Figures				IZ Trend	Indicator Measurement
	IZ	IZ's latest figure compared to:				
		Aberdeenshire	Scotland			
Alcohol-related hospital stays	104.2	-60.8%		-83.0%	Up	Rate per 100,000 pop.
All-cause mortality among the 15-44 year olds	79.3	-16.0%		-32.3%	Up	Rate per 100,000 pop.
Babies exclusively breastfed at 6-8 weeks	41.2	0.6%		9.4%	Up	% of babies with a valid feeding status
Bowel screening uptake	68.7	-4.3%		3.1%	Up	% of eligible people (aged 50-74)
Child dental health in primary 1	84.6	5.8%		11.5%	Up	% of P1 pupils
Child dental health in primary 7	81.0	1.2%		6.0%	Up	% of P7 pupils
Child healthy weight in primary 1	75.0	-2.4%		5.2%	Down	% of P1 pupils
Deaths all ages	1226.1	15.8%		3.9%	Down	Rate per 100,000 pop.
Developmental concerns at 27-30 months	8.3	5.5%		-6.3%	Up	% of children reviewed
Early deaths from cancer (<75)	165.1	25.3%		10.4%	Down	Rate per 100,000 pop.
Early deaths from coronary heart disease (<75)	49.4	30.7%		-6.1%	Down	Rate per 100,000 pop.
Female life expectancy	82.7	1.1%		2.5%	Down	Life expectancy at birth in years
Healthy birth weight	80.9	-2.2%		-3.2%	Up	% of all singleton births
Immunisation uptake at 24 months - 6 in 1	97.7	-0.1%		0.7%	Up	% of children in relevant age group
Immunisation uptake at 24 months - MMR	94.6	-0.2%		0.2%	Up	% of children in relevant age group
Male life expectancy	80.2	3.2%		4.7%	Down	Life expectancy at birth in years
Maternal obesity	27.2	2.7%		1.1%	Up	% of women at antenatal booking
Patients (65+) with multiple A&E hospitalisations	7209.2	14.6%		5.6%	Down	Rate per 100,000 pop.
Patients hospitalised with asthma	57.8	80.9%		-15.6%	Down	Rate per 100,000 pop.
Patients hospitalised with COPD	100.8	-13.9%		-51.4%	Down	Rate per 100,000 pop.
Patients hospitalised with coronary heart disease	341.0	15.9%		-0.2%	Down	Rate per 100,000 pop.
Patients with emergency hospitalisations	5733.4	8.6%		-20.8%	Down	Rate per 100,000 pop.
Premature births	7.2	-2.1%		-1.0%	Up	% of all live births
Uptake of the HPV vaccine in S3 girls	83.8	-5.6%		-1.1%	Down	% of S3 girls

Based on the 24 health-related indicators in the table, this IZ is situated towards the more vulnerable end of the spectrum in an Aberdeenshire context, which wasn't the case last year, suggesting the health profile has deteriorated somewhat. However, the area fares a little better in a Scottish context but again, the rankings have deteriorated.

That said, the area compares favourably to most other areas in Scotland in terms of alcohol-related hospital stays. The IZ is in the top 10% of the country regarding this particular indicator. The same story emerges for early deaths from coronary heart disease, with the rates in this area among the lowest in Scotland.

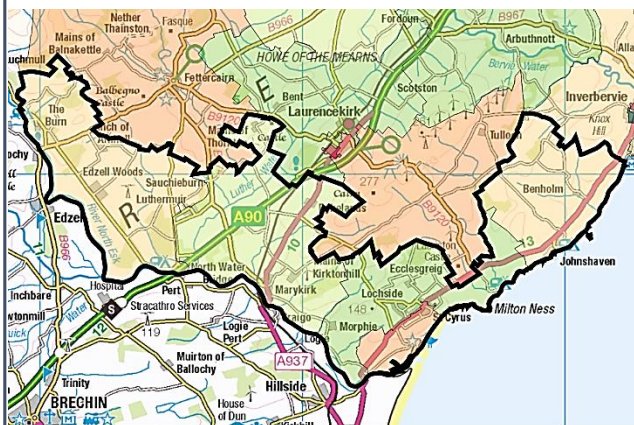
Issues that may require further investigation include:

- Maternal obesity;
- Deaths all ages;
- Child healthy weight in primary 1;
- Immunisation uptake at 24 months - MMR;
- Uptake of the HPV vaccine in S3 girls;
- Early deaths from cancer (<75);
- Early deaths from coronary heart disease;
- Healthy birth weight;

With regards to each of the indicators listed above the IZ compares less favourably to other areas in Aberdeenshire and, in some instances, Scotland (and/or the trend is worsening).

Mearns South and Benholm Economic Data (1 of 3)

Rank of Household Income per Data Zone (2023)



In terms of household income, this IZ is generally in keeping with the Aberdeenshire averages, with a slight bias to the more affluent end of the spectrum. The median household income in 2023 equated to £42,693, which is £937 higher than the Shire average (£41,756). This gap is not as high as it was last year, suggesting incomes have grown at a slower rate than most other Shire IZs.

Median household income ranges from £37,359 in DZ S01006809 (St Cyrus down to the Angus border) to £49,932 in DZ S01006808 (Lochside and the surrounding areas, stretching north towards Johnshaven).

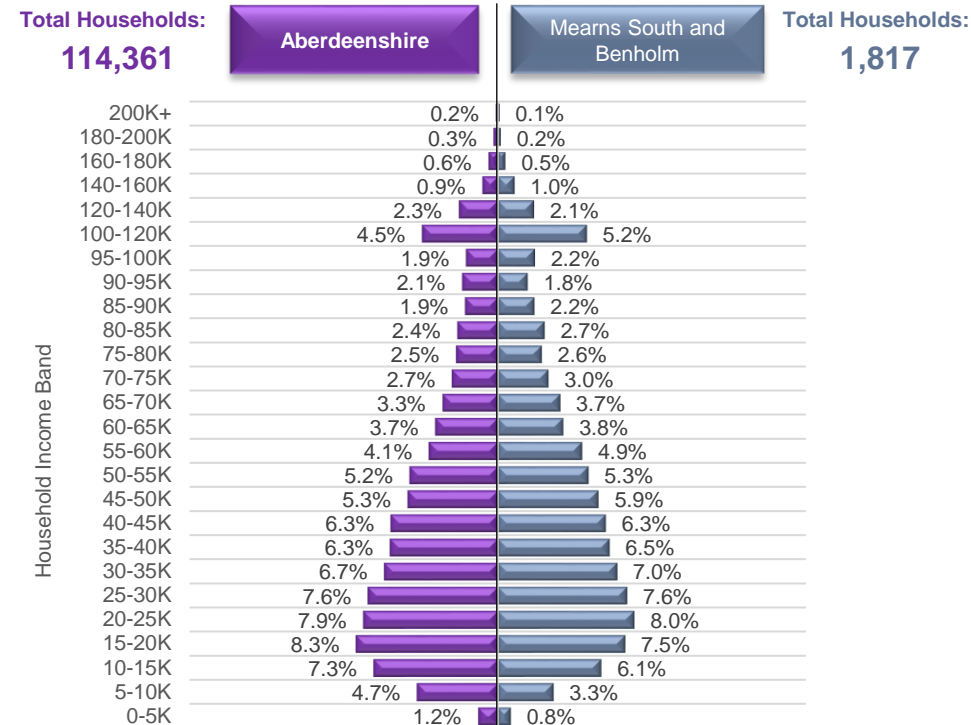
Approximately 4.0% of households in this IZ earn less than £10,000 per year, lower than the Shire rate (5.3%). This equates to roughly 73 households, 3 fewer than last year. Areas with a particularly high concentration of such households are located in St Cyrus, specifically the area to the northeast of Kirkview Gardens.

High income households are generally located in Lochside and the surrounding area (predominantly to the north, west and south of the town).

Household Income per Data Zone (2023)

Data Zone	Households	Average Income	Median Income	Lower Quartile Income
S01006806	485	£ 52,507	£ 45,119	£ 26,462
S01006807	266	£ 49,227	£ 42,504	£ 25,274
S01006808	301	£ 57,795	£ 49,932	£ 29,340
S01006809	393	£ 45,056	£ 37,359	£ 21,354
S01006810	372	£ 47,649	£ 39,835	£ 23,135

Household Income per Band, Mearns South and Benholm & Aberdeenshire (2023)



© CACI Limited 1996 - 2022 This report shall be used solely for academic, personal and/or non-commercial purposes. The applicable copyright notices can be found at <https://www.caci.co.uk/copyrightnotices.pdf>

Median Household Income (2023)



£42,693

Aberdeenshire: £41,756

£42,693



% of Households Earning Less Than £10k (2023)



<£10K

4.0%

Aberdeenshire: 5.3%

4.0%



% of Households Earning More Than £100k (2023)



>£100K

9.1%

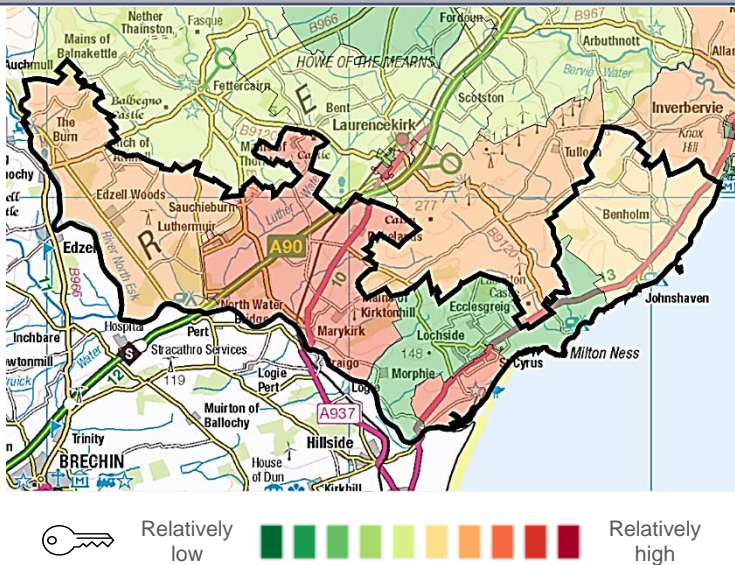
Aberdeenshire: 10.1%

9.1%

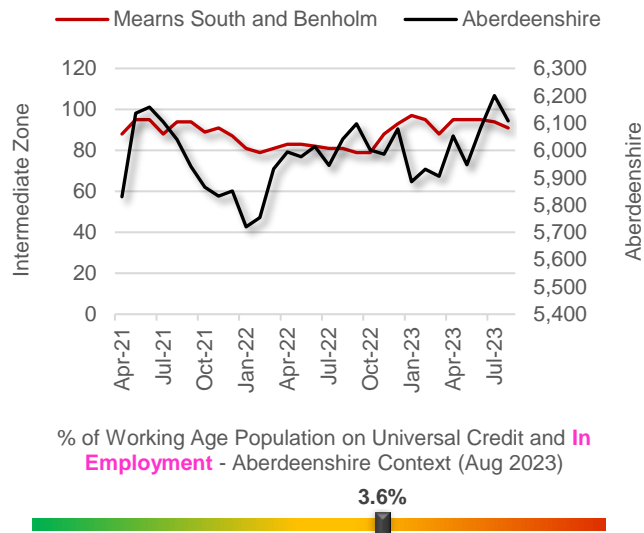


Mearns South and Benholm Economic Data (2 of 3)

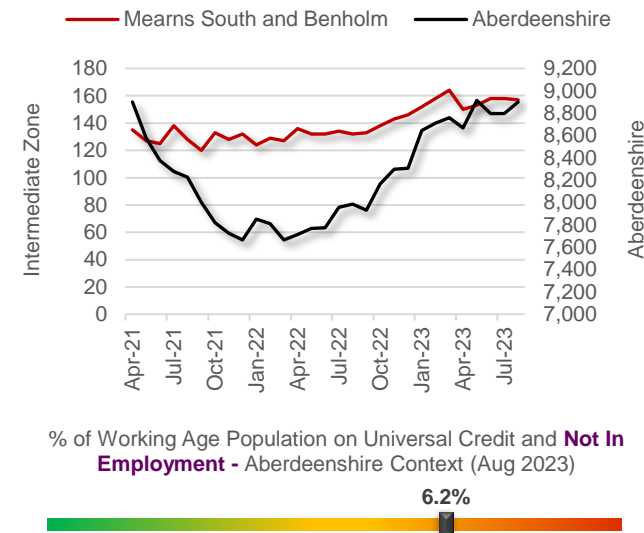
Latest Unemployment Rate - Ranking per Data Zone



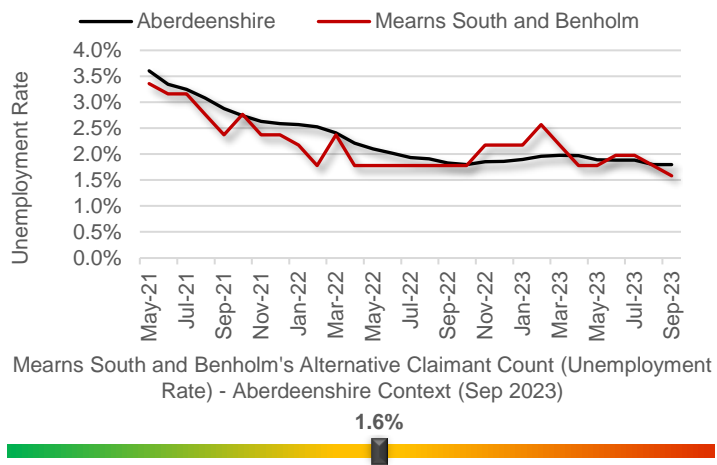
People on Universal Credit - In Employment



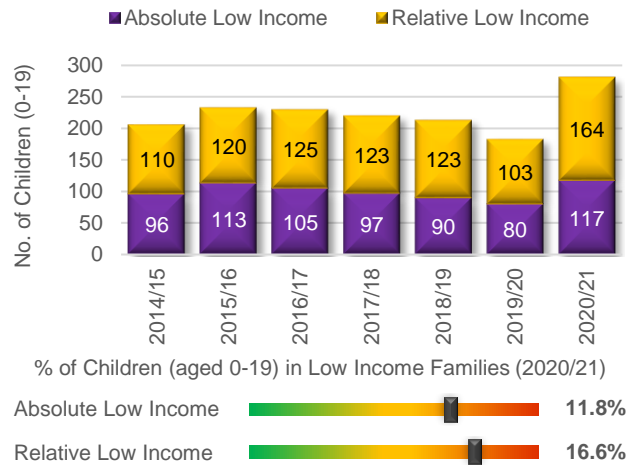
People on Universal Credit - Not In Employment



Alternative Claimant Count - Effective 'Unemployment Rate'



Children in Low Income Families



Summary

The number of people claiming Universal Credit (UC) - who are also in employment - has generally remained static over the past couple of years. Latest figures show 3.6% of people aged 16-64 (who also have jobs) are claiming UC. As the spectrum chart shows, this is more or less in keeping with the Aberdeenshire average, albeit tending towards the more vulnerable end of the spectrum.

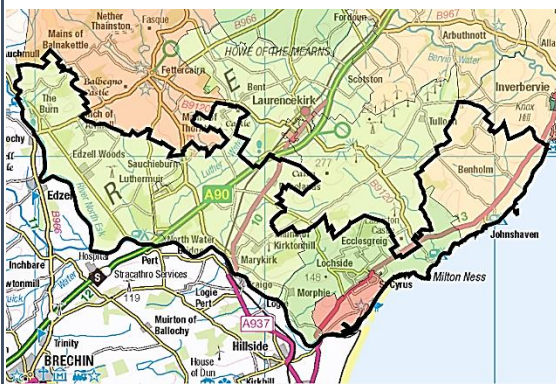
Like Aberdeenshire, the unemployment rate in the IZ has fallen substantially since the August 2020 peak of 4.4%. Latest data suggests approximately 1.6% of the Working Age population is currently out-of-work, which is lower than the Aberdeenshire rate (1.8%). The rate ranges from 0.7% (S01006808, which surrounds Lochside - a relatively high-income area) to 2.3% (S01006806, which covers the middle portion of the IZ, falling either side of the A90).

The proportion of children living in low-income households is towards the higher end of the spectrum in an Aberdeenshire context. This is a marked deterioration since the previous year, which was the culmination of a multi-year downward trend. This trend was broken decisively during the latest year for which data are available.

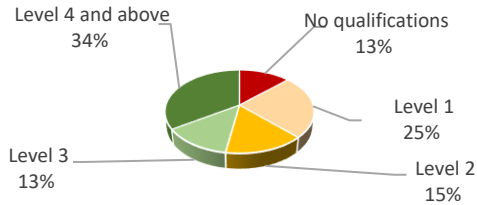
Economic Indicators

Mearns South and Benholm Economic Data (3 of 3)

People With No Qualifications, Census 2011



% of Employees per Qualification Type



Summary

The employment numbers per broad industrial group relate to the kind of jobs within the area, which may be filled by those living outwith the IZ.

Employment in this IZ is generally spread out among a number of industrial groups, the main ones being Agriculture, Education, and the Professional sector. Of these, the Agriculture, forestry and fishing sector has seen a considerable rise in the number of jobs over the past couple of years. Much of this appears to be a result of more logging jobs.

Other common job types in the area relate to primary education; architectural and engineering activities; support activities to agriculture and post-harvest crop activities; and support activities for transportation.

Generally speaking, compared to other IZs in the area, this IZ isn't an employment hub as such, which is reflected in the relatively low overall jobs number.

Despite an increase in the number of jobs over the period, enterprise numbers appear to have reduced. While agriculture and forestry enterprises have increased, reductions were seen in the Professional sector and in the Construction sector.

Approximate Employment Count per Broad Industrial Group, Mearns South and Benholm, 2020-22

Broad Industrial Group	2020	2021	2022	2020-22 % Diff.
Agriculture, forestry & fishing	50	75	150	200%
Mining, quarrying & utilities	10	5	5	-50%
Manufacturing	100	100	50	-50%
Construction	45	50	50	11%
Motor trades	5	10	10	100%
Wholesale	35	30	35	0%
Retail	40	40	35	-13%
Transport & storage (inc postal)	30	50	40	33%
Accommodation & food services	50	75	75	50%
Information & communication	20	10	10	-50%
Financial & insurance	0	0	10	0%
Property	10	10	25	150%
Professional, scientific & technical	125	100	125	0%
Business administration & support services	100	75	75	-25%
Public administration & defence	0	0	10	0%
Education	150	150	150	0%
Health	10	10	0	-100%
Arts, entertainment, recreation & other services	15	20	20	33%
Total	795	810	875	10%

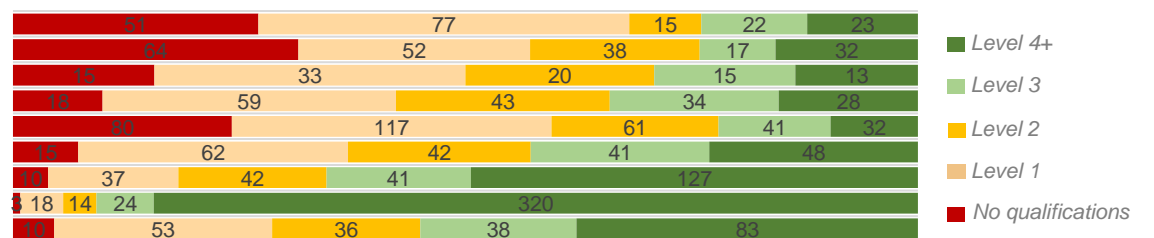
Approximate Number of Enterprises per Turnover Band (£), Mearns South and Benholm, 2021-23

Turnover	2021	2022	2023	2021-23 % Diff.
£1m+	10	5	5	-50%
£500-999k	10	15	10	0%
£200-499k	20	20	15	-25%
£100-199k	60	60	55	-8%
£50-99k	45	35	35	-22%
£0-49k	20	25	30	50%

Employees per Occupation Type, Census 2011

Elementary occupations	188
Process, plant and machine operatives	203
Sales and customer service occupations	96
Caring, leisure and other service occupations	182
Skilled trades occupations	331
Administrative and secretarial occupations	208
Associate professional and technical...	257
Professional occupations	379
Managers, directors and senior officials	220

Employees per Qualification & Occupation Type, Census 2011



Mearns South and Benholm Housing Data



Relatively sparse / rural

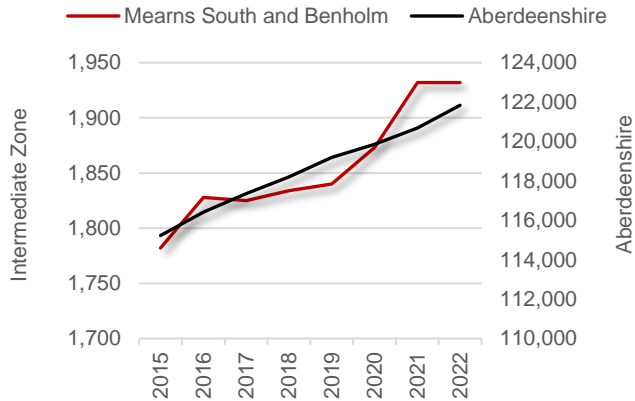
Dwellings per Hectare (2022)

0.19



Relatively dense / urban

Number of Dwellings, 2015-22



% Growth in No. of Dwellings 2015-22 (Aberdeenshire Context)

6.9%

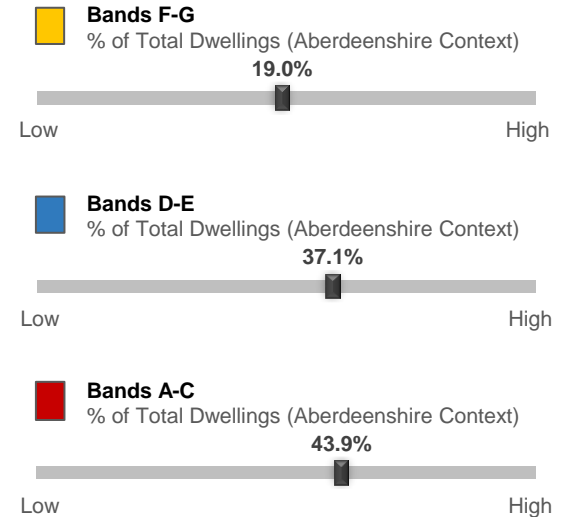
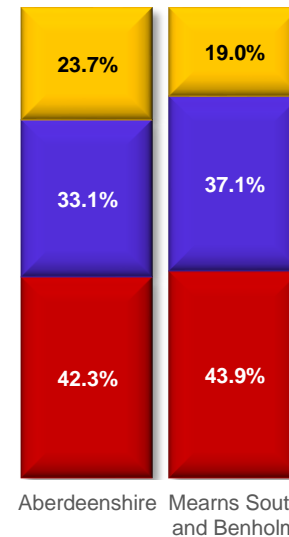
Summary

At 0.19 dwellings per hectare, this IZ is on the more rural side of the spectrum, with fewer properties per hectare relative to other IZs in the Shire. Although it contains the town of St Cyrus, which itself is relatively small, the IZ also stretches westward toward Edzell Woods and beyond, which tends to be rural in nature. The 0.19 figure is further helped by the fact that only 3% of dwellings in the area are categorised as 'flat's' - much lower than the 12% figure for Aberdeenshire as a whole.

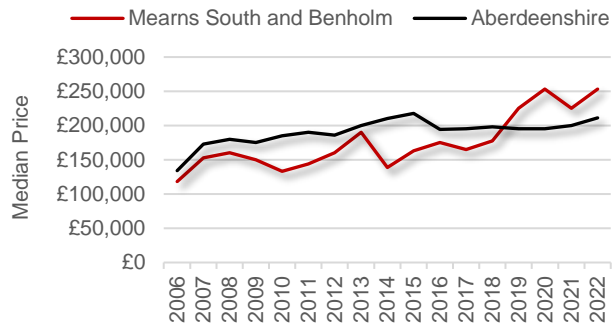
The number of houses in this area has increased by 6.9% since 2015, which is towards the higher end of the spectrum. This is not surprising given that the area experienced one of the highest rates of population growth over a similar period.

The proportion of dwellings in each Council Tax band generally match Aberdeenshire rates, albeit with a slightly higher percentage in Bands A-C. Despite this the median house price in the IZ (£253,000), which is higher-than-average (£210,995).

Proportion of Dwellings per Council Tax Band, 2022



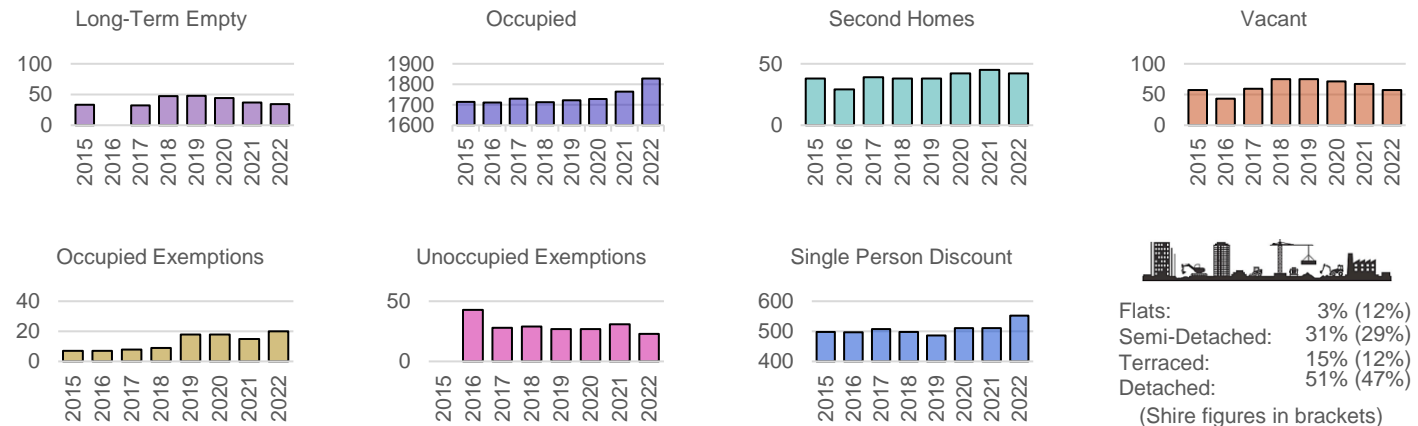
Median Residential House Prices (Sales), 2006-22



2022 Median House Price (Aberdeenshire Context)

£253,000

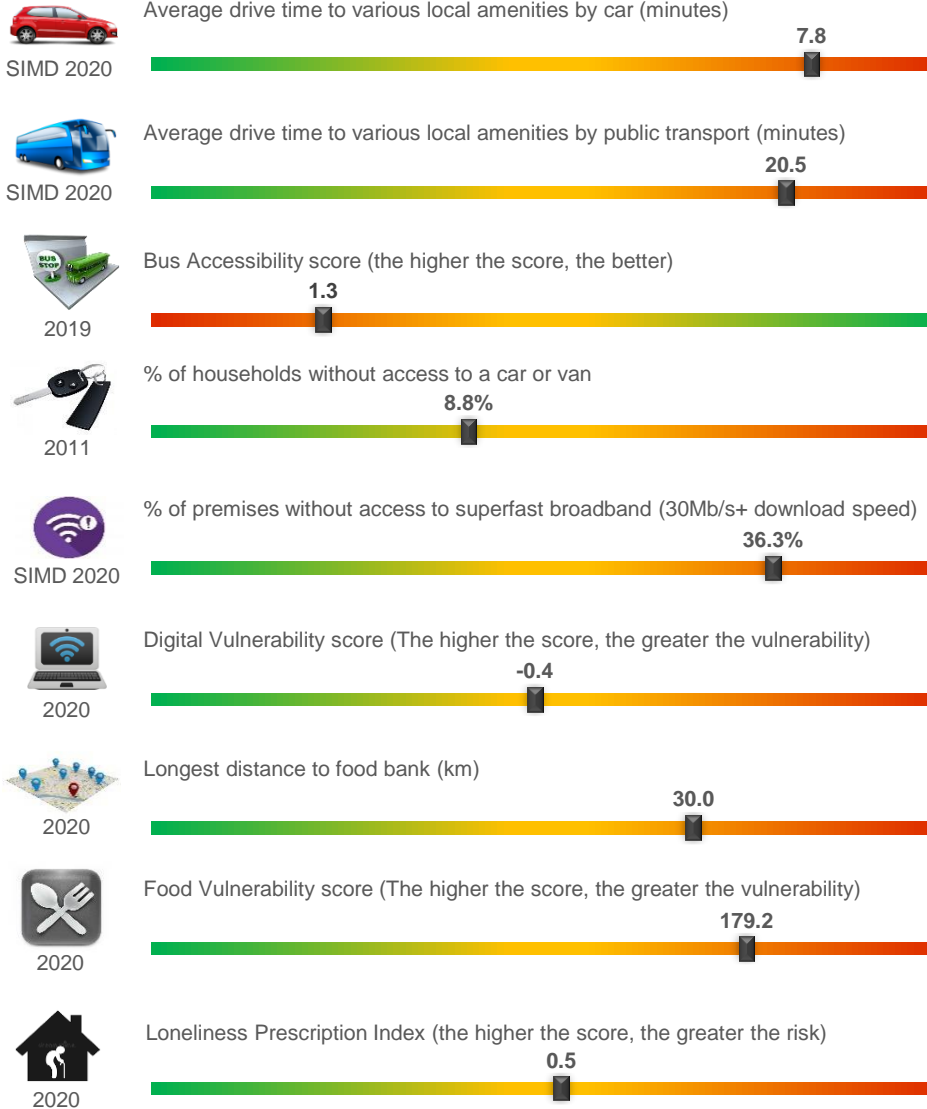
Housing Types, 2015-22 (Data on Flats, etc., relate to 2017 - the latest year for which data are available)



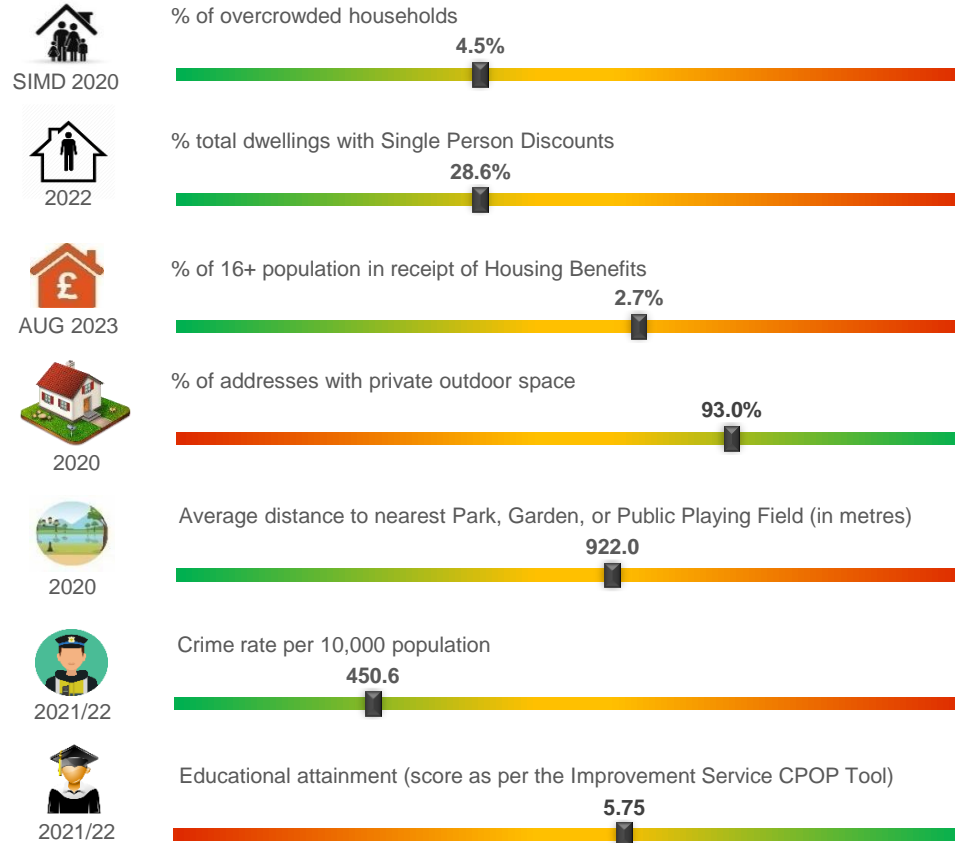
Flats: 3% (12%)
 Semi-Detached: 31% (29%)
 Terraced: 15% (12%)
 Detached: 51% (47%)
 (Shire figures in brackets)

Mearns South and Benholm Other Socio-Economic Data

Geographic Access / Digital Connectivity / Food Vulnerability / Loneliness Proxy



Housing / Environment / Crime Rate / Educational Attainment



Summary

Generally speaking, most of the other miscellaneous socio-economic indicators on this page suggest the area 'suffers' with regards to some of the 'remoteness' indicators. For instance, the average drive times to get to various local amenities are generally among the highest in the Shire.

The area also experiences sub-optimal superfast broadband coverage, with 36.3% of premises lacking that capability. Affected areas include the north of Marykirk and areas outside St Cyrus and Lochside.

More positively, the general IZ area enjoys one of the lowest crime rates in Aberdeenshire (and therefore one of the lowest crime rates in Scotland), and private outdoor space is relatively common.