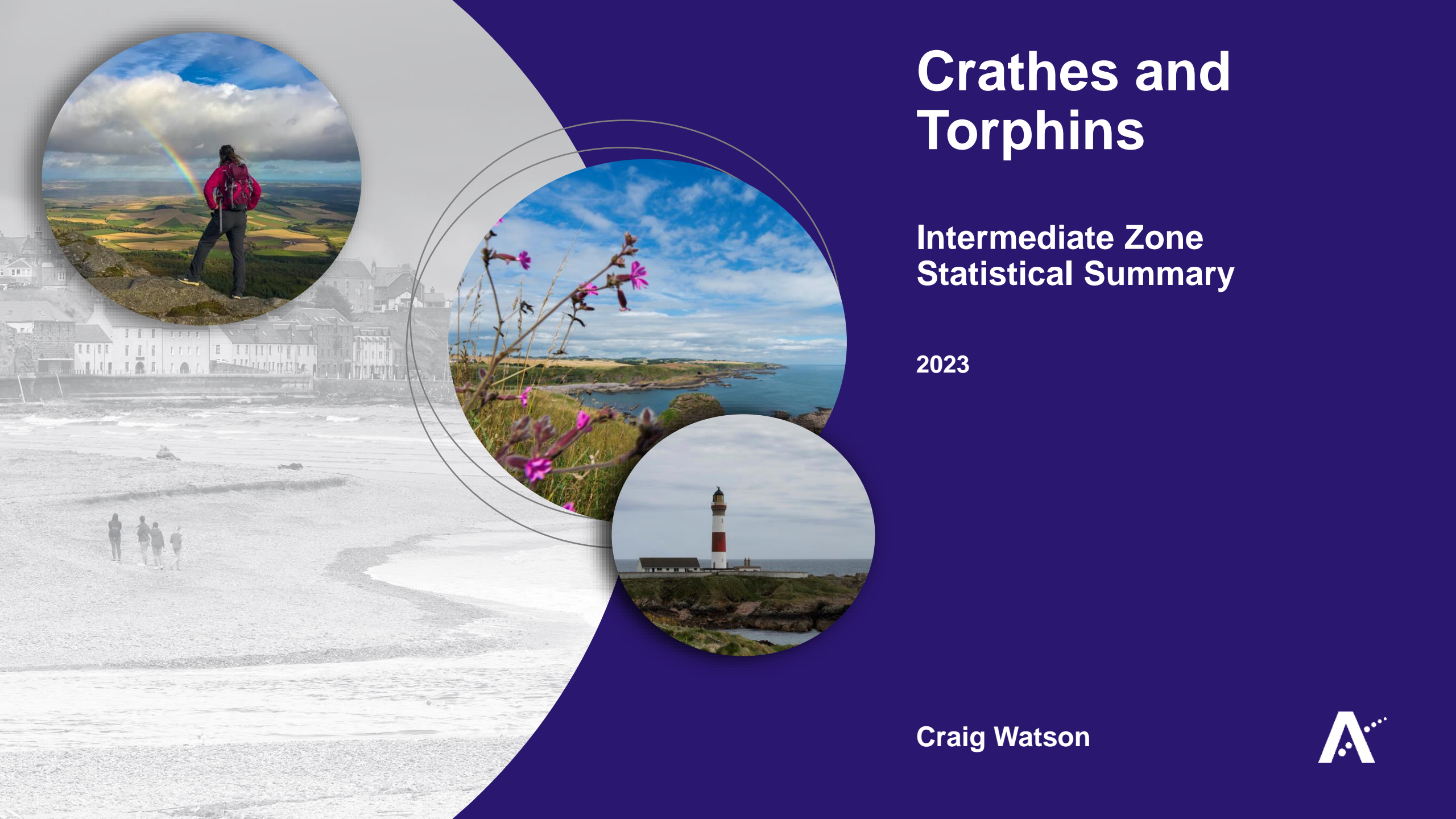


Crathes and Torphins

Intermediate Zone Statistical Summary

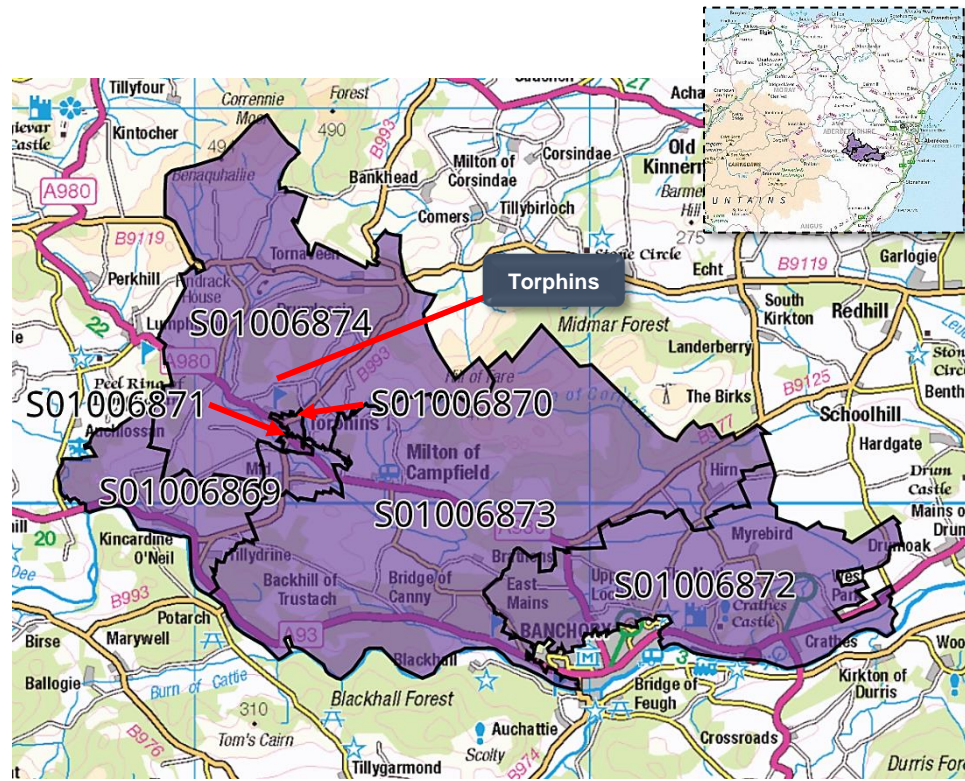
2023

Craig Watson

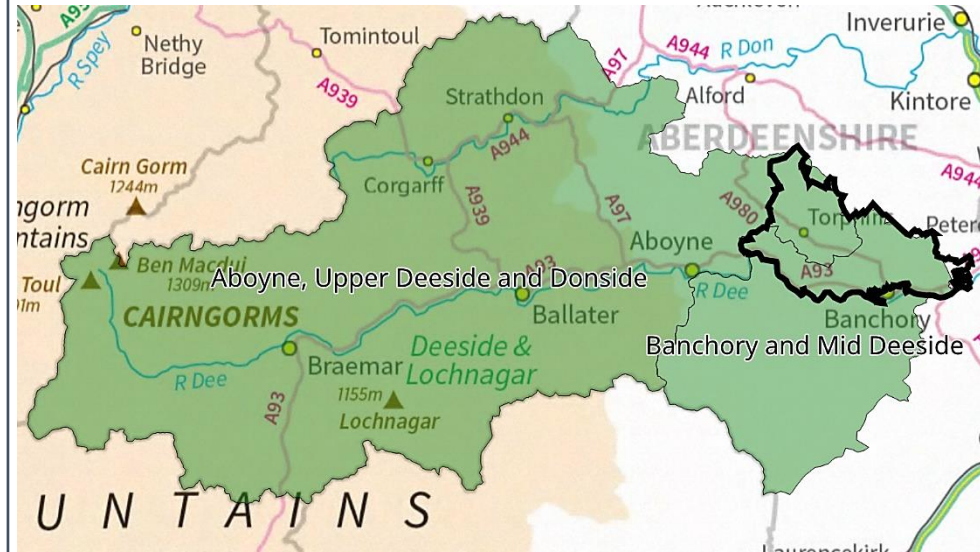


Crathes and Torphins

Data Zones Within the Intermediate Zone



Relevant Multi-Member Wards



Notes on the Maps

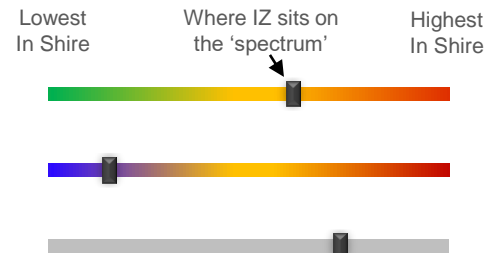
The map on the left shows the location and geographic area of the Crathes & Torphins Intermediate Zone. It contains 6 Data Zones. Torphins comprises 2 Data Zones – S01006870, and S01006871.

Two MMWs straddle the Intermediate Zone (Aboyne, Upper Deeside and Donside, and Banchory and Mid Deeside).

Spectrum Charts Explained

The following statistical pages frequently utilise spectrum charts as a visual aid to accompany an indicator. They are used to place the relevant Intermediate Zone (IZ) in the context of all other IZs in Aberdeenshire with regards to that indicator.

The charts to the right are examples of the spectrum charts used in this report. The black line represents where the IZ sits in the context of the highest and lowest figures in Aberdeenshire. If the black line is situated towards the left-hand side, the IZ recorded one of the lowest figures in Aberdeenshire. Conversely, if the black line is towards the right-hand side, it recorded one of the highest figures in Aberdeenshire.



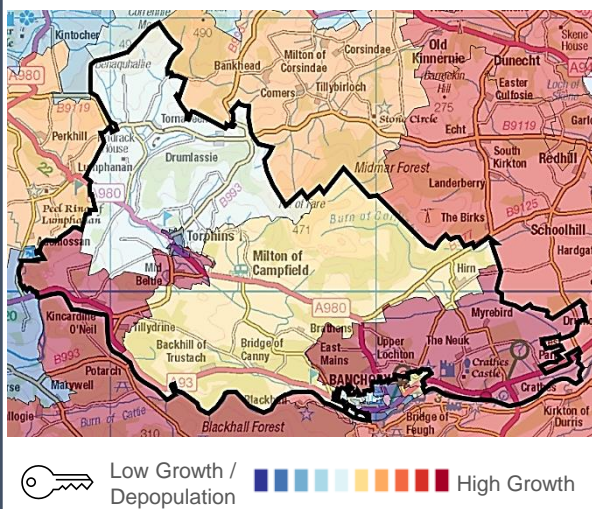
The green/red spectrum charts are the most common type. If the black line is situated towards the red end of the spectrum, it means the figure is objectively worse than most other IZs in Aberdeenshire and vice versa.

The blue/red spectrum charts are used in the demographic section to denote high population growth (red) and population decline (blue).

The grey spectrum charts are simply used to denote high and low in the context of Aberdeenshire, where the high / low figure is neither good nor bad. An example would be the proportion of dwellings that fall within Council Tax Bands F-G.

Crathes and Torphins Demographic Data

Map of Crathes and Torphins: Population Change (2014-2021)



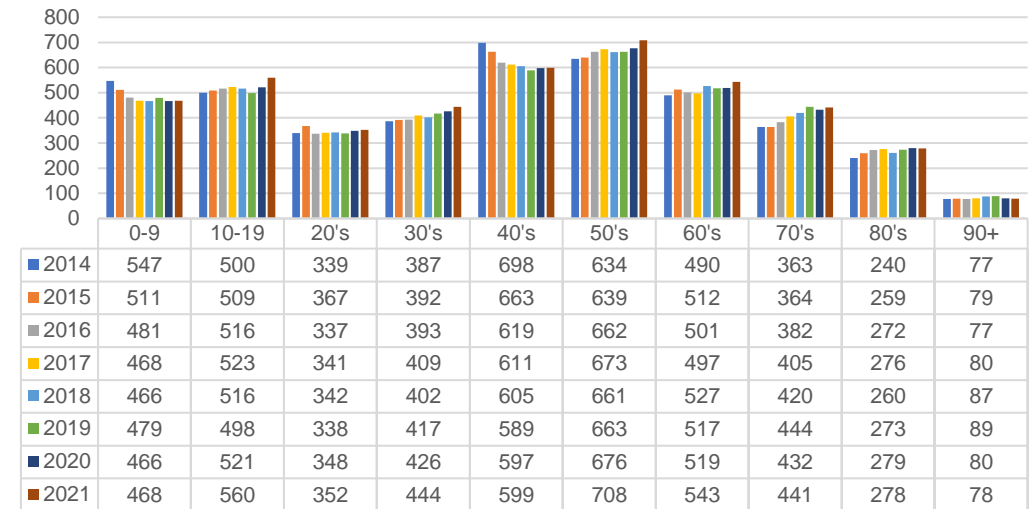
The population of the Crathes and Torphins IZ increased by 4.6% between 2014 and 2021, which is towards the higher end of the spectrum in an Aberdeenshire context. The growth over that period is largely thanks to two DZs - S01006869 (+15.6%) and S01006872 (+32.5%).

The DZ with the 32.5% increase is situated just outside Banchory, to the north, and stretches eastwards towards Drumoak. This DZ is home to the highest child population in the region. It also has one of the highest compound annual growth rates in Aberdeenshire, thanks largely to a fast-growing child and working age population. This DZ is unusual in that the number of people in their 40's has increased, which is opposite to the trend in most other areas in Aberdeenshire - and indeed, in this particular IZ, which has seen its 40-something population decrease by 14.2% since 2013.

The DZ with a 15.6% increase is at the opposite side of the IZ, generally covering an area to the south and west of Torphins, around the general Kincardine O'Neil region. (Torphins itself saw its population drop by about 9.8% since 2014).

Approximately 57.9% of the population is of working age, which is among the lowest proportions in Aberdeenshire. This is largely a result of this IZ being home to a smaller proportion of people in their 20's and 30's compared to Aberdeenshire as a whole (the older age profile of DZ S01006873 is a major reason for this).

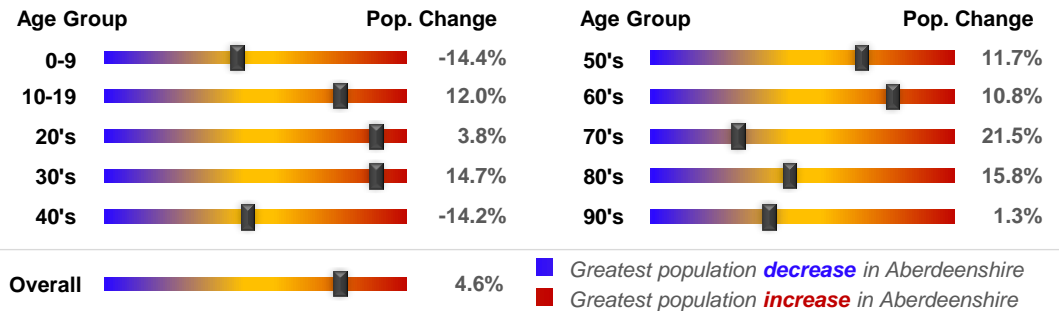
Population per Age Group, Crathes and Torphins, 2014-2021



Population Change per Data Zone, 2014 & 2021

Data Zone	2014	2021	% Difference
S01006869	493	570	15.6%
S01006870	510	470	-7.8%
S01006871	757	673	-11.1%
S01006872	888	1177	32.5%
S01006873	1051	1027	-2.3%
S01006874	576	554	-3.8%
Total	4275	4471	4.6%

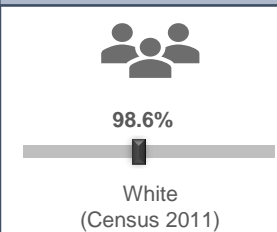
Rate of Population Change per Age Group, 2021 Compared to 2014



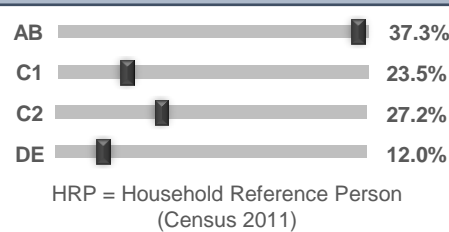
Country of Birth



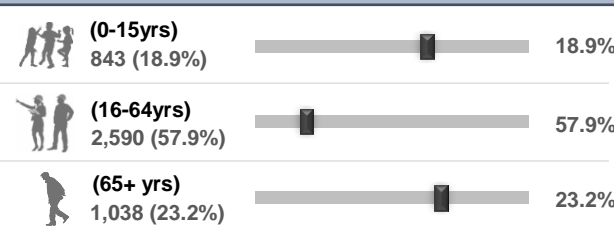
Ethnicity



Approximated Social Grade of HRP



Population per Broad Age Group, 2021



In 2021 4,471 people lived in Crathes and Torphins -- 843 (18.9%) were under 15 years of age, 2,590 (57.9%) were aged 16-64, and 1,038 (23.2%) were over 65.

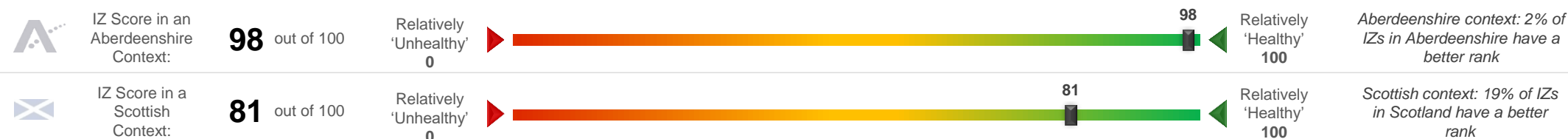
The black markers show where these percentages sit in the context of Aberdeenshire: left = low; right = high.

Crathes and Torphins Health Data (1 of 2)

SIMD 2020 Health Domain Rank		Universal Credit (UC) Limited Work Capability Households	Personal Independence Payments																																																																								
		<p>No. of Households in receipt of Universal Credit</p> <p>% of Households where at least 1 occupant has limited work capability (May-2023) - Aberdeenshire Context</p> <p>1.4%</p>	<p>No. of Cases with Entitlement</p> <p>% of Working Age Population (16-64) Receiving PIPs (Jul-2023) - Aberdeenshire Context</p> <p>1.8%</p>																																																																								
<p>Day-to-Day Activities</p> <p>Proportion of people whose day-to-day activities are limited a little or a lot - Aberdeenshire Context (Census 2011)</p> <p>16.3%</p>	<p>Health Rating</p> <p>Proportion of people who rated their health as either 'good' or 'very good' - Aberdeenshire Context (Census 2011)</p> <p>87.1%</p>	<p>According to monthly health-related benefits data, the number of households on Universal Credit increased at the start of Covid, decreased and plateaued for much of last year, and began to increase from autumn 2022. The number of households with Limited Work Capability or LWC (due to physical or mental health issues) has remained relatively high since the peak period, now affecting 26 households (up from 8 in January 2020). However, the IZ figure of 1.4% of households with at least 1 occupant assessed as having LWC is among the lowest in Aberdeenshire.</p> <p>A higher proportion of the Working Age Population (1.8%) receive Personal Independence Payments (PIPs). This helps with some of the extra costs caused by long-term disability, ill-health or terminal ill-health. The IZ trend has generally followed the Aberdeenshire trend. The 1.8% figure is relatively low compared to most other IZs in Aberdeenshire.</p> <p>According to SIMD 2020 data, DZ S01006872 has the best health ranking (rural area to the north and east of Banchory) and S01006871 has the 'worst' (southern half of Torphins). Even the worst ranked DZ in this area is just outside the top 20% least health deprived in Scotland.</p>																																																																									
<p>SIMD 2020 Health Domain Indicators per each Data Zone in the Crathes and Torphins Intermediate Zone (compared to Aberdeenshire average)</p>																																																																											
<p>SIMD Health Domain Indicator (Data Zones colour-coordinated with map) >></p> <table border="1"> <thead> <tr> <th></th> <th>S01006869</th> <th>S01006870</th> <th>S01006871</th> <th>S01006872</th> <th>S01006873</th> <th>S01006874</th> <th>Shire</th> </tr> </thead> <tbody> <tr> <td>Health Domain Rank (see map for colour-coded rankings) (the higher, the better)</td> <td>5866</td> <td>6535</td> <td>5491</td> <td>6951</td> <td>6202</td> <td>5870</td> <td>5,254</td> </tr> <tr> <td>Comparative Illness Factor (Scotland = 100) (the lower, the better)</td> <td>35</td> <td>35</td> <td>45</td> <td>15</td> <td>40</td> <td>45</td> <td>58</td> </tr> <tr> <td>Emergency stays in hospital (Scotland = 100) (the lower, the better)</td> <td>85.1</td> <td>49.8</td> <td>69.1</td> <td>46.2</td> <td>61.7</td> <td>65.7</td> <td>71.5</td> </tr> <tr> <td>Hospital stays related to alcohol misuse (Scotland = 100) (the lower, the better)</td> <td>22.4</td> <td>68.5</td> <td>38.3</td> <td>12.4</td> <td>10.6</td> <td>17.2</td> <td>45.4</td> </tr> <tr> <td>Hospital stays related to drug misuse (Scotland = 100) (the lower, the better)</td> <td>32.6</td> <td>0.0</td> <td>23.5</td> <td>0.0</td> <td>0.0</td> <td>0.0</td> <td>30</td> </tr> <tr> <td>Proportion of live singleton births of lowbirth weight (the lower, the better)</td> <td>4.2%</td> <td>0.0%</td> <td>0.0%</td> <td>6.5%</td> <td>7.1%</td> <td>0.0%</td> <td>4.0%</td> </tr> <tr> <td>Proportion of population being prescribed drugs for anxiety, depression or psychosis</td> <td>16.0%</td> <td>13.4%</td> <td>15.8%</td> <td>10.1%</td> <td>15.6%</td> <td>15.7%</td> <td>15.6%</td> </tr> <tr> <td>Standardised Mortality Ratio (Scotland = 100) (the lower, the better)</td> <td>72</td> <td>71</td> <td>125</td> <td>63</td> <td>95</td> <td>112</td> <td>85</td> </tr> </tbody> </table>					S01006869	S01006870	S01006871	S01006872	S01006873	S01006874	Shire	Health Domain Rank (see map for colour-coded rankings) (the higher, the better)	5866	6535	5491	6951	6202	5870	5,254	Comparative Illness Factor (Scotland = 100) (the lower, the better)	35	35	45	15	40	45	58	Emergency stays in hospital (Scotland = 100) (the lower, the better)	85.1	49.8	69.1	46.2	61.7	65.7	71.5	Hospital stays related to alcohol misuse (Scotland = 100) (the lower, the better)	22.4	68.5	38.3	12.4	10.6	17.2	45.4	Hospital stays related to drug misuse (Scotland = 100) (the lower, the better)	32.6	0.0	23.5	0.0	0.0	0.0	30	Proportion of live singleton births of lowbirth weight (the lower, the better)	4.2%	0.0%	0.0%	6.5%	7.1%	0.0%	4.0%	Proportion of population being prescribed drugs for anxiety, depression or psychosis	16.0%	13.4%	15.8%	10.1%	15.6%	15.7%	15.6%	Standardised Mortality Ratio (Scotland = 100) (the lower, the better)	72	71	125	63	95	112	85
	S01006869	S01006870	S01006871	S01006872	S01006873	S01006874	Shire																																																																				
Health Domain Rank (see map for colour-coded rankings) (the higher, the better)	5866	6535	5491	6951	6202	5870	5,254																																																																				
Comparative Illness Factor (Scotland = 100) (the lower, the better)	35	35	45	15	40	45	58																																																																				
Emergency stays in hospital (Scotland = 100) (the lower, the better)	85.1	49.8	69.1	46.2	61.7	65.7	71.5																																																																				
Hospital stays related to alcohol misuse (Scotland = 100) (the lower, the better)	22.4	68.5	38.3	12.4	10.6	17.2	45.4																																																																				
Hospital stays related to drug misuse (Scotland = 100) (the lower, the better)	32.6	0.0	23.5	0.0	0.0	0.0	30																																																																				
Proportion of live singleton births of lowbirth weight (the lower, the better)	4.2%	0.0%	0.0%	6.5%	7.1%	0.0%	4.0%																																																																				
Proportion of population being prescribed drugs for anxiety, depression or psychosis	16.0%	13.4%	15.8%	10.1%	15.6%	15.7%	15.6%																																																																				
Standardised Mortality Ratio (Scotland = 100) (the lower, the better)	72	71	125	63	95	112	85																																																																				

Crathes and Torphins Health Data (2 of 2)

Crathes and Torphins's position on the 'Health Spectrum' – Aberdeenshire and Scottish Context (the higher the score, the better)



Selection of ScotPHO indicators, Crathes and Torphins IZ compared to Aberdeenshire & Scotland (latest data)

Indicator	Latest Available Figures				IZ Trend	Indicator Measurement
	IZ	IZ's latest figure compared to:				
		Aberdeenshire	Scotland			
Alcohol-related hospital stays	40.3	-84.9%		-93.4%	Down	Rate per 100,000 pop.
All-cause mortality among the 15-44 year olds	0.0	-100.0%		-100.0%	Down	Rate per 100,000 pop.
Babies exclusively breastfed at 6-8 weeks	68.6	28.1%		36.8%	Up	% of babies with a valid feeding status
Bowel screening uptake	76.0	2.9%		10.4%	Up	% of eligible people (aged 50-74)
Child dental health in primary 1	86.4	7.6%		13.3%	Up	% of P1 pupils
Child dental health in primary 7	91.9	12.2%		16.9%	Up	% of P7 pupils
Child healthy weight in primary 1	76.2	-1.2%		6.4%	Down	% of P1 pupils
Deaths all ages	919.9	-13.1%		-22.1%	Down	Rate per 100,000 pop.
Developmental concerns at 27-30 months	0.7	-2.1%		-13.8%	Down	% of children reviewed
Early deaths from cancer (<75)	89.0	-32.5%		-40.5%	Down	Rate per 100,000 pop.
Early deaths from coronary heart disease (<75)	22.9	-39.4%		-56.5%	Up	Rate per 100,000 pop.
Female life expectancy	86.0	5.0%		6.5%	Up	Life expectancy at birth in years
Healthy birth weight	90.5	7.4%		6.3%	Up	% of all singleton births
Immunisation uptake at 24 months - 6 in 1	95.4	-2.4%		-1.6%	Down	% of children in relevant age group
Immunisation uptake at 24 months - MMR	93.9	-1.0%		-0.5%	Down	% of children in relevant age group
Male life expectancy	81.4	4.8%		6.4%	Up	Life expectancy at birth in years
Maternal obesity	21.8	-2.6%		-4.3%	Up	% of women at antenatal booking
Patients (65+) with multiple A&E hospitalisations	6289.8	0.0%		-7.8%	Down	Rate per 100,000 pop.
Patients hospitalised with asthma	13.5	-57.8%		-80.3%	Down	Rate per 100,000 pop.
Patients hospitalised with COPD	31.7	-72.9%		-84.7%	Down	Rate per 100,000 pop.
Patients hospitalised with coronary heart disease	287.3	-2.3%		-15.9%	Down	Rate per 100,000 pop.
Patients with emergency hospitalisations	4402.3	-16.6%		-39.2%	Down	Rate per 100,000 pop.
Premature births	7.7	-1.6%		-0.5%	Down	% of all live births
Uptake of the HPV vaccine in S3 girls	92.4	3.0%		7.6%	Down	% of S3 girls

Based on the 24 health-related indicators in the table, this IZ has one of the best health profiles in Scotland. Only 21% of IZs in Scotland has a better ranking

The area compares favourably to most other areas in Scotland in terms of a range of health-related outcomes, particularly in relation to Alcohol-related hospital stays; All-cause mortality among 15-44 year olds; Babies exclusively breastfed at 6-8 weeks; Bowel screening uptake; Child dental health in primary 7; Developmental concerns at 27-30 months; Early deaths from cancer (<75); Patients (65+) with multiple emergency hospitalisations; Patients hospitalised with COPD; and Patients with emergency hospitalisations. In each instance the IZ is in the top 10% in Scotland.

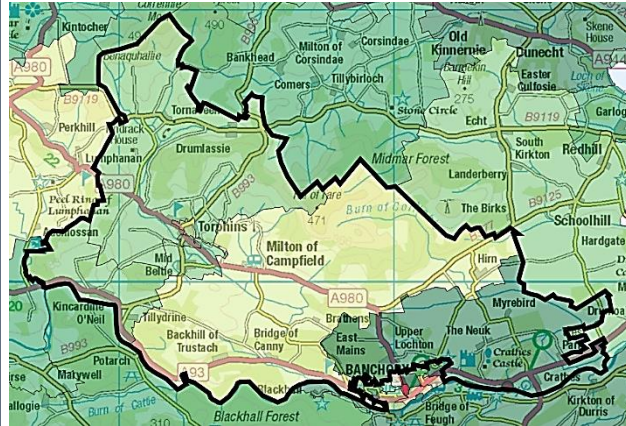
Issues that may require further investigation include:

- Immunisation uptake at 24 months.
- Premature births

In relation to this indicator the IZ compares less favourably to other areas in Aberdeenshire and, in some instances, Scotland (and/or the trend is worsening).

Crathes and Torphins Economic Data (1 of 3)

Rank of Household Income per Data Zone (2023)



In terms of household income, this IZ is on the more affluent end of the spectrum in the context of Aberdeenshire. The median household income in 2023 equated to £52,614, which is £10,858 higher than the Shire average (£41,756).

Median household income ranges from £44,590 in DZ S01006873 (large rural area between the A93 in the west to Hirn in the east, home to an older demographic) to £65,104 in DZ S01006872 (area just north and east of Banchory, surrounding Crathes Castle). This is a reduction of over £3,000 since the previous year.

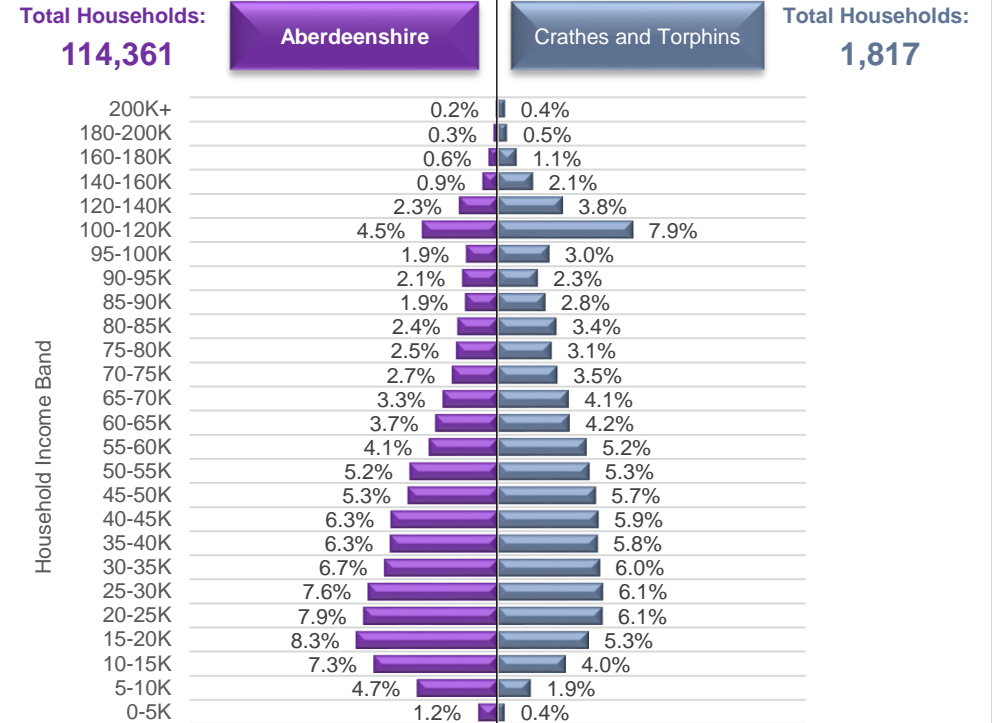
Approximately 2.3% of households in this IZ earn less than £10,000 per year, which is lower-than-average (5.3%). This equates to roughly 42 households. Areas northwest of Banchory, towards Inchmarlo, tend to contain a higher-than-average proportion of such households.

High income households tend to be situated around the A980 northbound, from Upper Lochton in the south to Beltie Burn in the north, and includes the area around Fare View, Torphins.

Household Income per Data Zone (2023)

Data Zone	Households	Average Income	Median Income	Lower Quartile Income
S01006869	240	£ 59,704	£ 51,976	£ 31,426
S01006870	203	£ 55,456	£ 47,639	£ 27,960
S01006871	253	£ 61,315	£ 52,894	£ 30,765
S01006872	437	£ 72,569	£ 65,104	£ 40,509
S01006873	467	£ 53,118	£ 44,590	£ 25,850
S01006874	217	£ 60,940	£ 53,074	£ 31,855

Household Income per Band, Crathes and Torphins & Aberdeenshire (2023)



© CACI Limited 1996 - 2022 This report shall be used solely for academic, personal and/or non-commercial purposes. The applicable copyright notices can be found at <https://www.caci.co.uk/copyrightnotices.pdf>

Median Household Income (2023)



£52,614

Aberdeenshire: £41,756

£52,614



% of Households Earning Less Than £10k (2023)



<£10K

2.3%

Aberdeenshire: 5.3%

2.3%



% of Households Earning More Than £100k (2023)



>£100K

15.8%

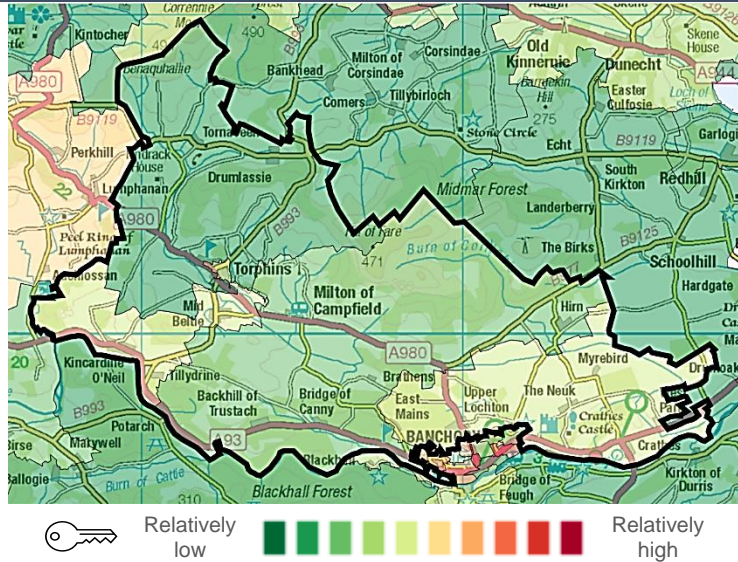
Aberdeenshire: 10.1%

15.8%

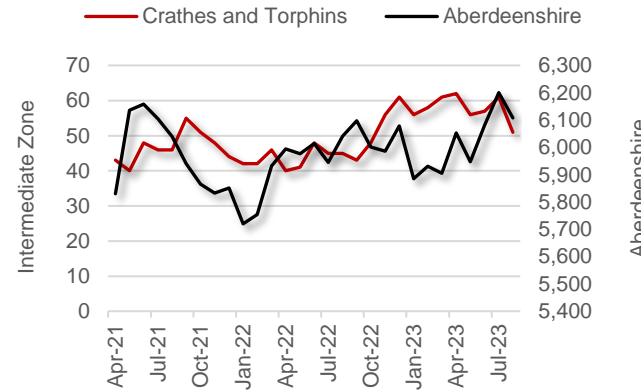


Crathes and Torphins Economic Data (2 of 3)

Latest Unemployment Rate - Ranking per Data Zone



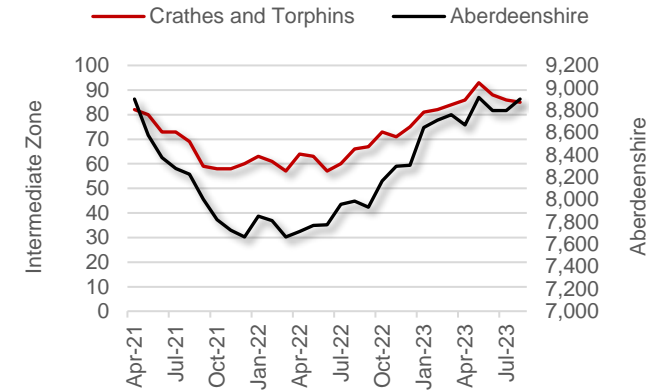
People on Universal Credit - In Employment



% of Working Age Population on Universal Credit and In Employment - Aberdeenshire Context (Aug 2023)



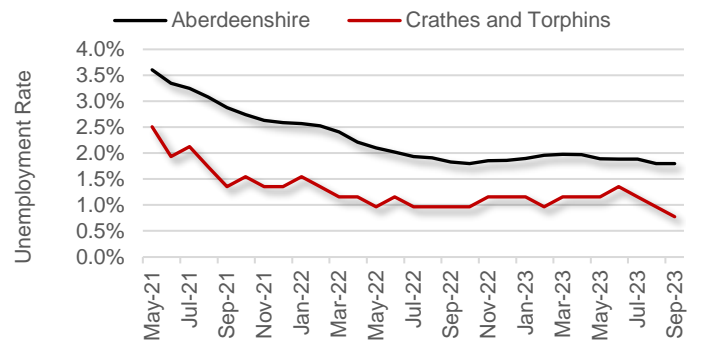
People on Universal Credit - Not In Employment



% of Working Age Population on Universal Credit and Not In Employment - Aberdeenshire Context (Aug 2023)



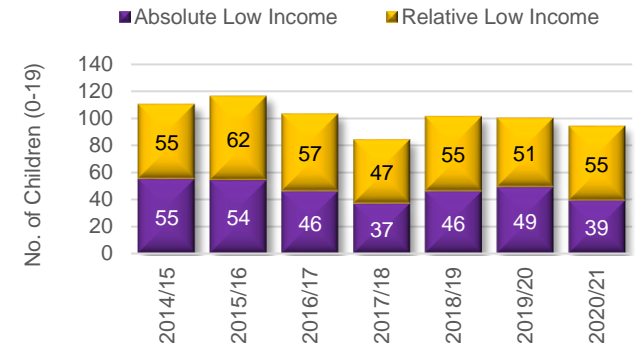
Alternative Claimant Count - Effective 'Unemployment Rate'



Crathes and Torphins's Alternative Claimant Count (Unemployment Rate) - Aberdeenshire Context (Sep 2023)



Children in Low Income Families



% of Children (aged 0-19) in Low Income Families (2020/21)



Summary

The number of people claiming Universal Credit (UC) - who are also in employment - has generally kept to within a band of between 40 and 60 for the past couple of years. Latest figures show 2.0% of people aged 16-64 (who also have jobs) are claiming UC, which is among the lowest rates in Aberdeenshire, but a slight increase on last year.

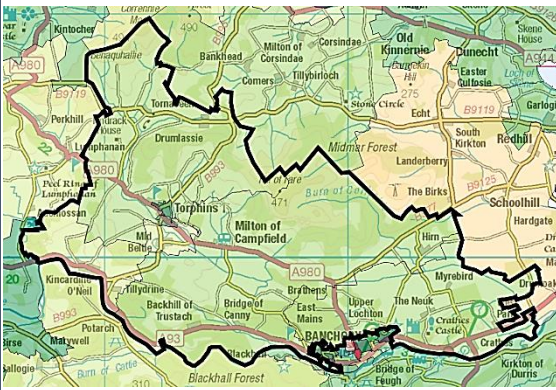
Like Aberdeenshire, the unemployment rate in the IZ has fallen substantially since the August 2020 peak of 3.2%. Latest data suggests approximately 0.8% of the Working Age population is currently out-of-work, which is one of the lowest rates in Aberdeenshire. The rate ranges from 0.0% (S01006874 & S01006871, which covers the area to the north of Torphins and the southern portion of the town itself respectively) to 1.2% (S01006869, which stretches from the south of Torphins to Kincardine O' Neil). The IZ unemployment rate generally tends not to exceed the Aberdeenshire-wide rate over any given month.

The proportion of children living in low-income households is among the lowest in the Shire, and the numbers have been decreasing over the past few years, which is contrary to the trend seen in many other IZs in Aberdeenshire.

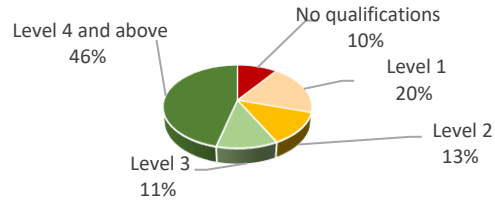
Economic Indicators

Crathes and Torphins Economic Data (3 of 3)

People With No Qualifications, Census 2011



% of Employees per Qualification Type



Summary

This IZ plays host to approximately 1,230 employees. The number employed appears to have increased over the past few years, particularly in the Professional, Scientific and Technical services industry, which is one of the area's major industries. The same may be said of the Construction sector, which has seen employee numbers increase 17% between 2020 and 2022.

Indeed, the only sectors to experience a reduction in employee numbers relate to Wholesale and the transport sector, both of which historically account for relatively low numbers of employee jobs.

The vast majority of enterprises in the region tend to be small businesses in terms of annual sales (i.e. less than £0.5 million per year). They tend to be in the Professional sector, Agriculture or Construction.

Employees in this IZ are generally well qualified. In fact, this IZ is home to the largest proportion of residents with a Level 4+ qualification.

A large proportion are employed in professional occupations.

Approximate Employment Count per Broad Industrial Group, Crathes and Torphins, 2020-22

Broad Industrial Group	2020	2021	2022	2020-22 % Diff.
Agriculture, forestry & fishing	10	20	15	50%
Mining, quarrying & utilities	40	40	50	25%
Manufacturing	20	40	40	100%
Construction	150	175	175	17%
Motor trades	20	20	30	50%
Wholesale	20	5	5	-75%
Retail	125	150	125	0%
Transport & storage (inc postal)	25	20	20	-20%
Accommodation & food services	75	75	100	33%
Information & communication	15	10	15	0%
Financial & insurance	10	10	10	0%
Property	20	25	20	0%
Professional, scientific & technical	200	200	225	13%
Business administration & support services	45	75	50	11%
Public administration & defence	0	0	0	0%
Education	50	50	50	0%
Health	175	250	200	14%
Arts, entertainment, recreation & other services	75	100	100	33%
Total	1,075	1,265	1,230	14%

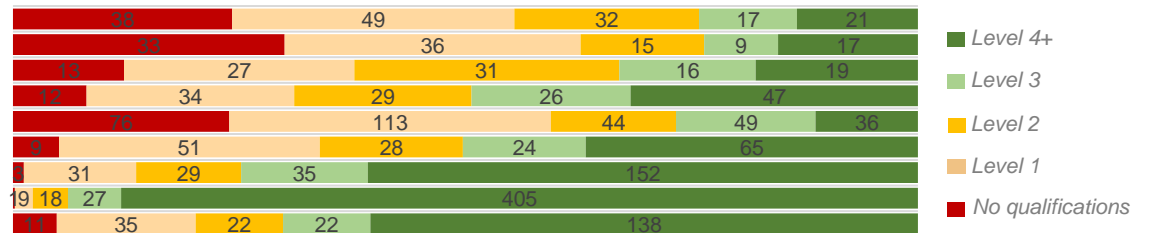
Approximate Number of Enterprises per Turnover Band (£), Crathes and Torphins, 2021-23

Turnover	2021	2022	2023	2021-23 % Diff.
£1m+	5	0	10	100%
£500-999k	15	5	5	-67%
£200-499k	20	30	30	50%
£100-199k	90	90	70	-22%
£50-99k	65	65	60	-8%
£0-49k	50	65	55	10%

Employees per Occupation Type, Census 2011

Elementary occupations	157
Process, plant and machine operatives	110
Sales and customer service occupations	106
Caring, leisure and other service occupations	148
Skilled trades occupations	318
Administrative and secretarial occupations	177
Associate professional and technical...	250
Professional occupations	460
Managers, directors and senior officials	228

Employees per Qualification & Occupation Type, Census 2011



Crathes and Torphins Housing Data



Relatively sparse / rural

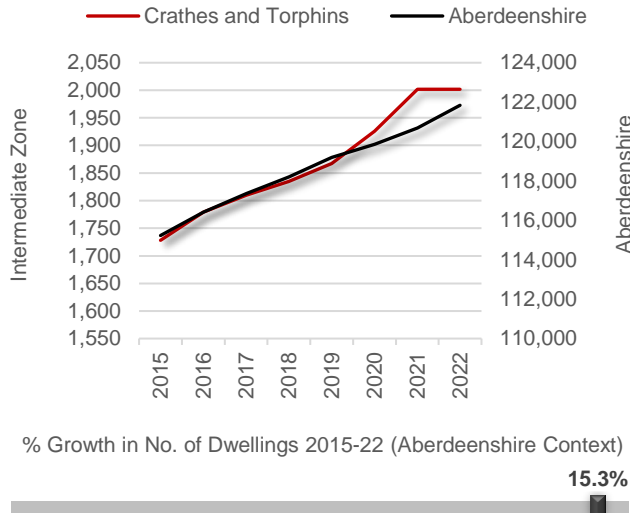
Dwellings per Hectare (2022)

0.14



Relatively dense / urban

Number of Dwellings, 2015-22



Summary

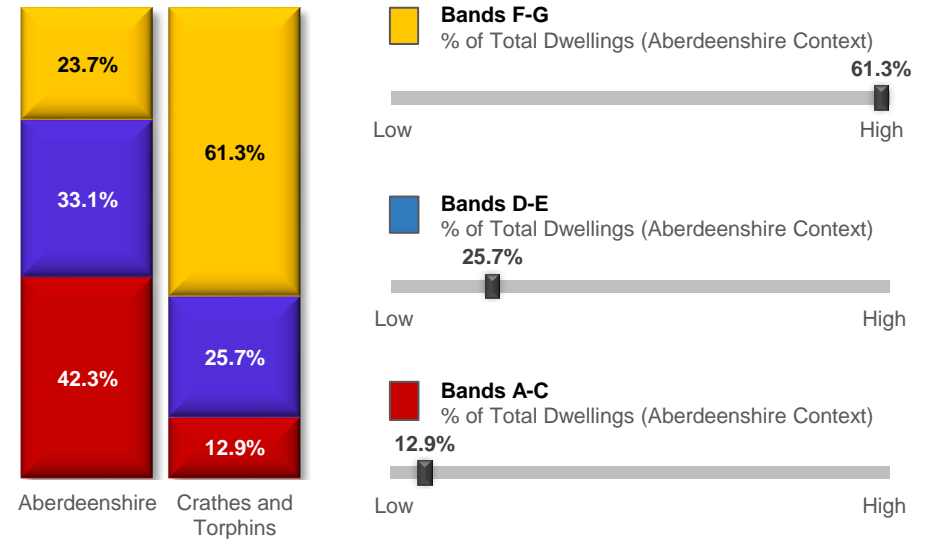
At 0.14 dwellings per hectare, this IZ is towards the more rural end of the spectrum in an Aberdeenshire context. This is unsurprising given the fact that Torphins is the largest settlement in the area, which sits in the middle of miles of farmland and large wooded areas.

The number of dwellings in the IZ has increased by 15.3% since 2015, which is one of the highest growth rates in Aberdeenshire, likely a result of home building north of Banchory (e.g., Upper Lochton). This general area is among the fastest growing in Aberdeenshire in terms of population.

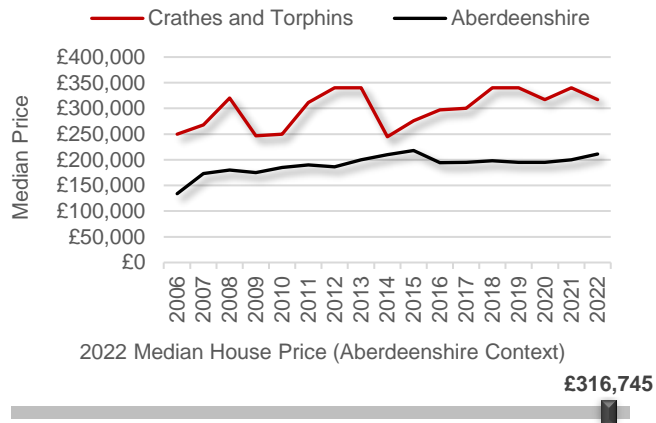
A relatively large proportion (61.3%) of the dwellings in this IZ fall within Council Tax Bands F-G. This is in fact the 2nd highest proportion in Aberdeenshire. Consequently, relatively few dwellings fall within lower bands.

The median house price is £316,745, which is approximately £105,000 higher than the Aberdeenshire average (£210,995), and among the highest valuation figures in Aberdeenshire.

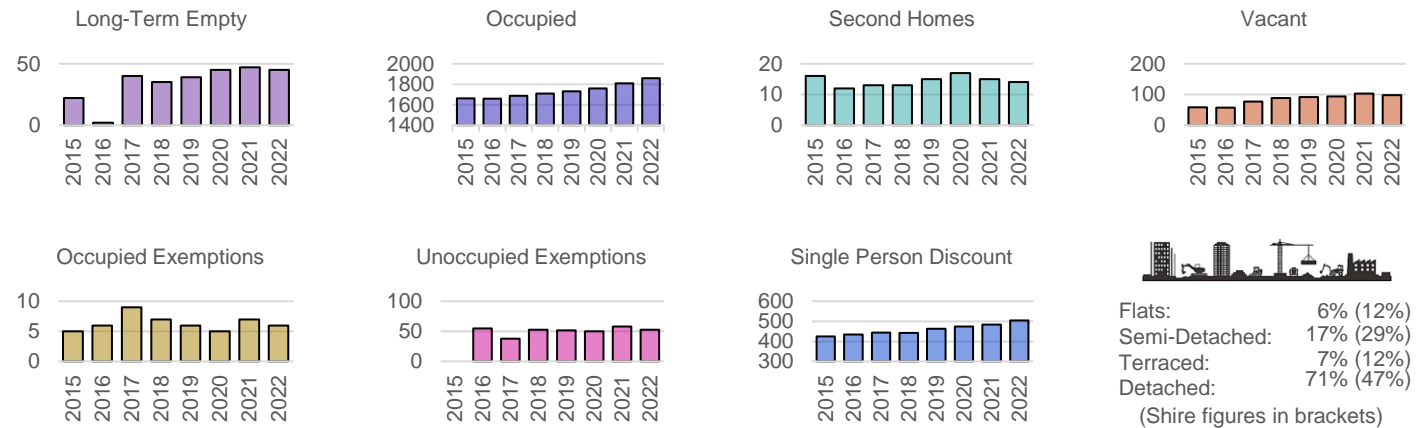
Proportion of Dwellings per Council Tax Band, 2022



Median Residential House Prices (Sales), 2006-22

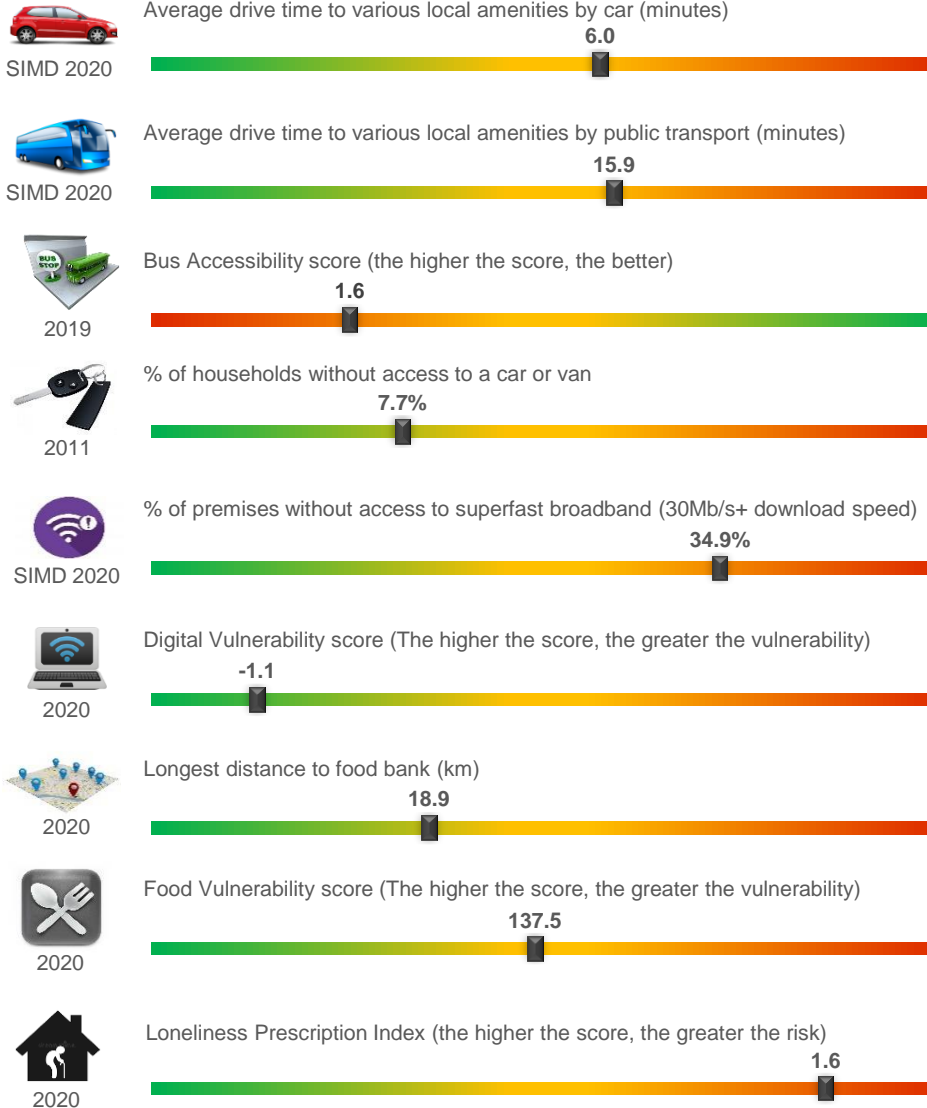


Housing Types, 2015-22 (Data on Flats, etc., relate to 2017 - the latest year for which data are available)

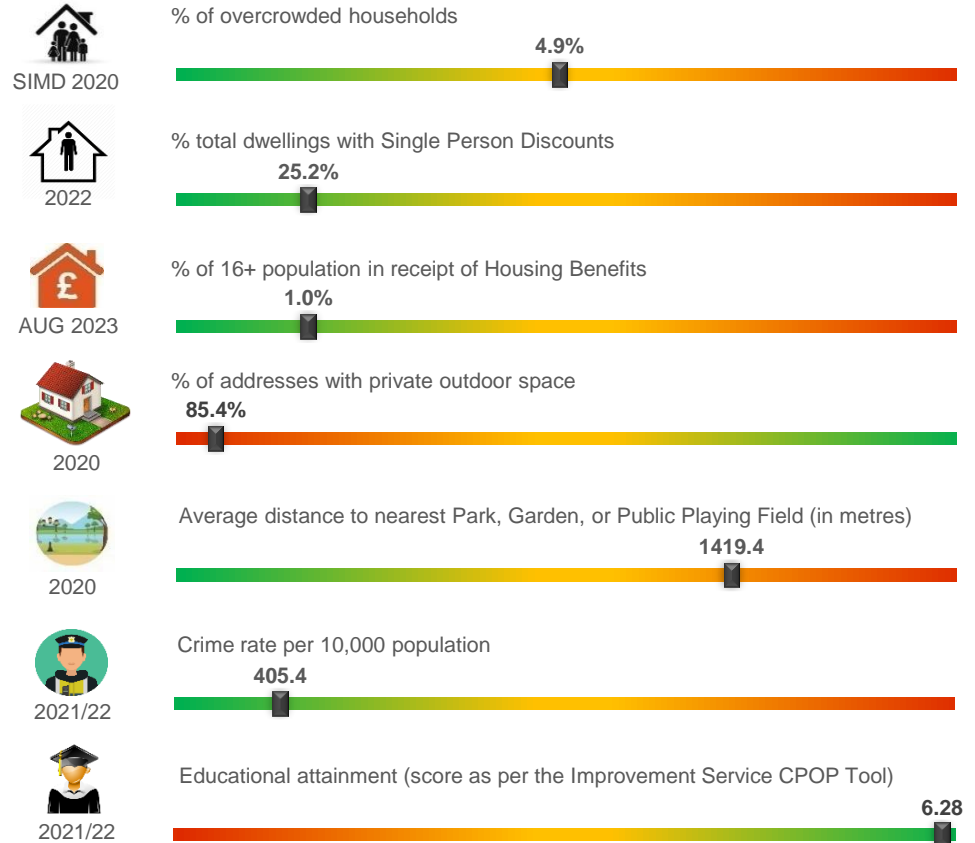


Crathes and Torphins Other Socio-Economic Data

Geographic Access / Digital Connectivity / Food Vulnerability / Loneliness Proxy



Housing / Environment / Crime Rate / Educational Attainment



Summary

The miscellaneous socio-economic indicators on this page tend to suggest residents in the area are relatively well-served in relation to multiple aspects of life. However, given the rural nature of the area, it tends to suffer a bit in respect of some of the 'remoteness' indicators.

For example, drive times to various local amenities via car and public transport are relatively high, and bus accessibility is relatively poor. Access to superfast broadband is also sub-optimal in some areas, particularly across the central portion of the IZ, and in the area to the north of Tornaveen.

Educational attainment is among the best in the local authority area, and the crime rate is low.