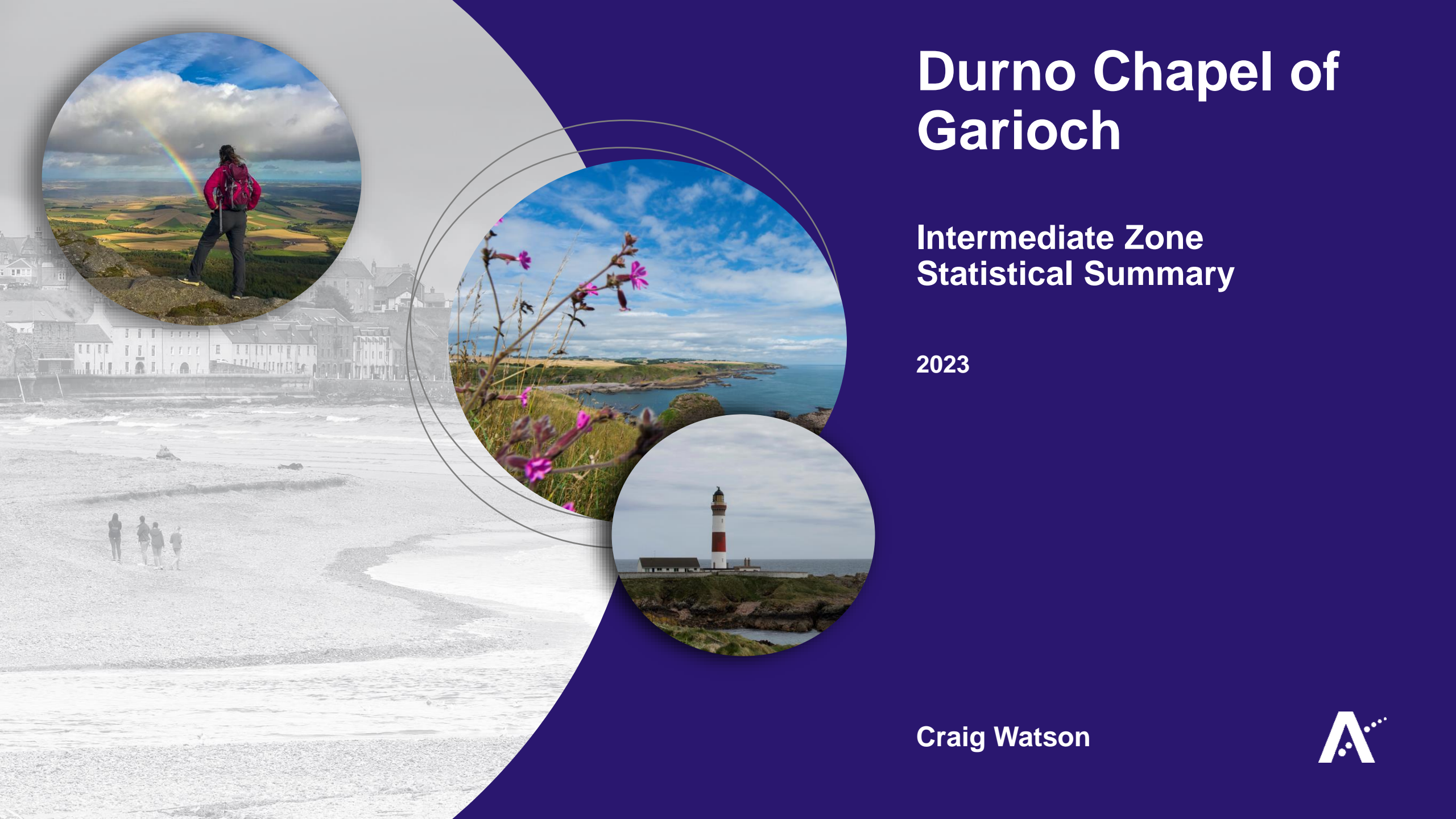


# Durno Chapel of Garioch

## Intermediate Zone Statistical Summary

2023

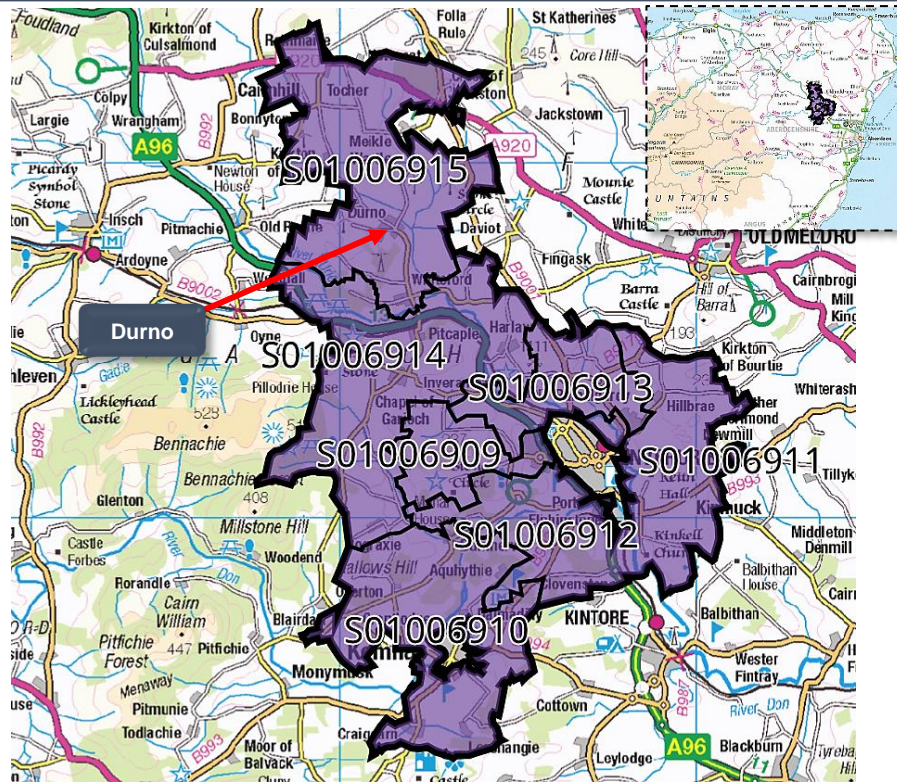
Craig Watson



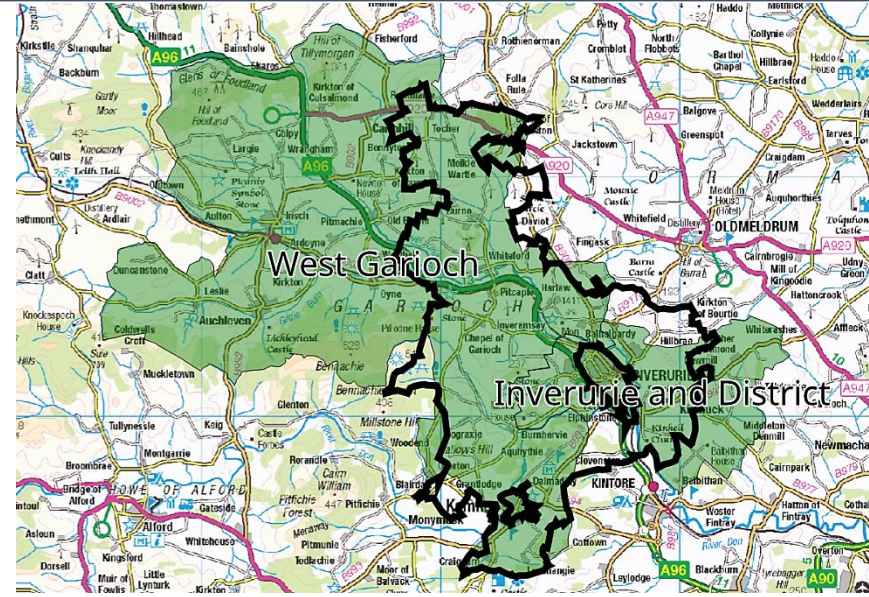


Durno Chapel of Garioch

Data Zones Within the Intermediate Zone



Relevant Multi-Member Wards



Notes on the Maps

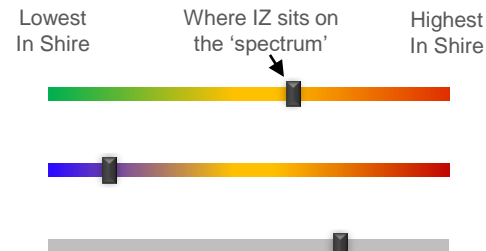
The map on the left shows the location and geographic area of the Durno-Chapel of Garioch Intermediate Zone. It contains 7 Data Zones. The area excludes Inverurie. (Inverurie North and Inverurie South Intermediate Zones are covered separately.)

Two MMWs straddle the Intermediate Zone (West Garioch and Inverurie and District).

Spectrum Charts Explained

The following statistical pages frequently utilise spectrum charts as a visual aid to accompany an indicator. They are used to place the relevant Intermediate Zone (IZ) in the context of all other IZs in Aberdeenshire with regards to that indicator.

The charts to the right are examples of the spectrum charts used in this report. The black line represents where the IZ sits in the context of the highest and lowest figures in Aberdeenshire. If the black line is situated towards the left-hand side, the IZ recorded one of the lowest figures in Aberdeenshire. Conversely, if the black line is towards the right-hand side, it recorded one of the highest figures in Aberdeenshire.



The green/red spectrum charts are the most common type. If the black line is situated towards the red end of the spectrum, it means the figure is objectively worse than most other IZs in Aberdeenshire and vice versa.

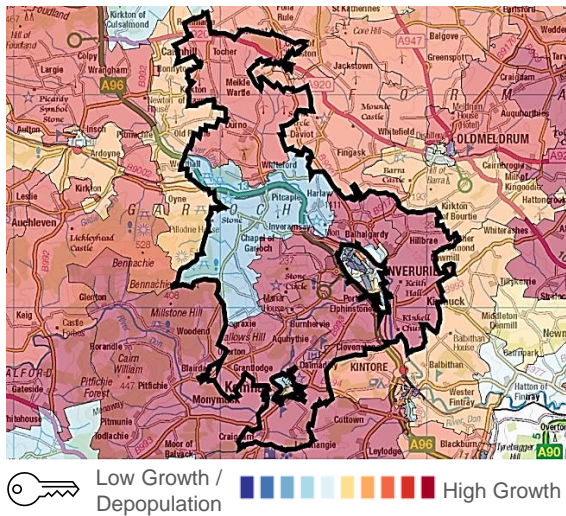
The blue/red spectrum charts are used in the demographic section to denote high population growth (red) and population decline (blue).

The grey spectrum charts are simply used to denote high and low in the context of Aberdeenshire, where the high / low figure is neither good nor bad. An example would be the proportion of dwellings that fall within Council Tax Bands F-G.



## Durno-Chapel of Garioch Demographic Data

Map of Durno-Chapel of Garioch: Population Change (2014-2021)



Population Change per Data Zone, 2014 & 2021

Data Zone	2014	2021	% Difference
S01006909	1087	1311	20.6%
S01006910	976	1121	14.9%
S01006911	805	778	-3.4%
S01006912	439	846	92.7%
S01006913	657	2342	256.5%
S01006914	758	707	-6.7%
S01006915	824	870	5.6%
Total	5546	7975	43.8%

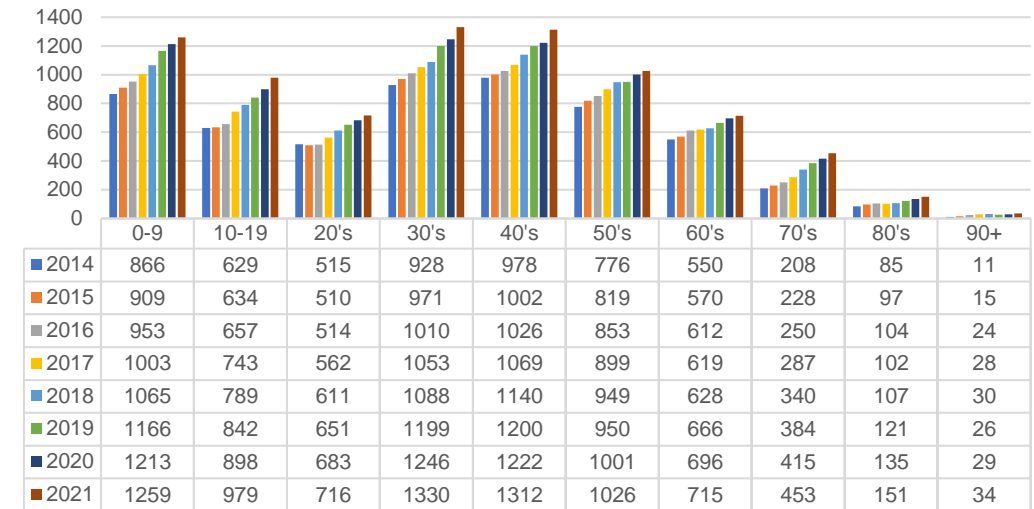
The population of the Durno-Chapel of Garioch IZ increased by 43.8% between 2014 and 2021 - the greatest percentage increase in Aberdeenshire over that period.

This is thanks largely to a sizable increase in the three Data Zones that immediately surround the town of Inverurie, particularly Data Zone S01006913, which saw its population almost quadruple in the last few years. It is now the most populated Data Zone in this area and home to the 2nd largest proportion of people under the age of 45 in Aberdeenshire relative to each IZ's respective population.

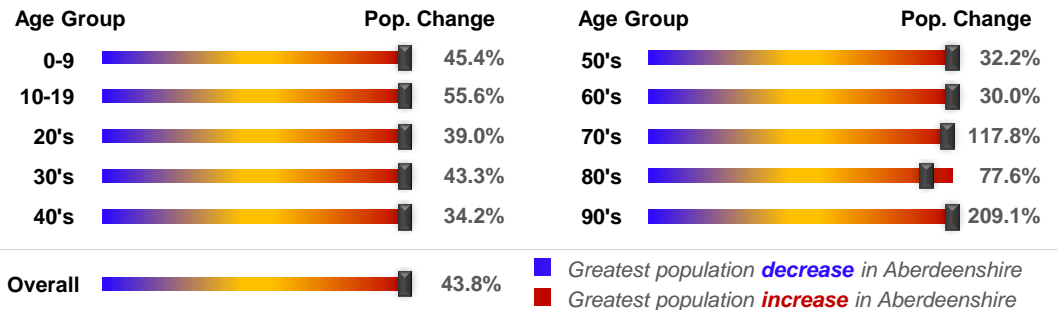
Given that 41% of the population in Data Zone S01006913 is between 25 and 45 years of age (the highest in the Shire), and that a further 32% are under the age of 20, it strongly suggests that the area is home to a large number of young families, perhaps more so than is the case elsewhere in the region.

Consequently, the IZ's age profile tends to be considerably younger than most other areas in Aberdeenshire, with those in their 30's the most dominant group (in Aberdeenshire as a whole, 50-somethings tend to be the largest group). This may have implications for services that cater to the needs of families and younger people in the area. Policy makers may therefore wish to determine if there are any gaps in service provision in these areas, particularly services that cater to the needs of families and young people.

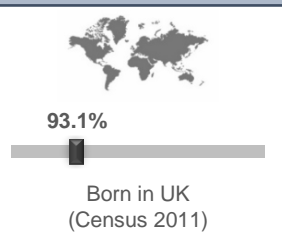
Population per Age Group, Durno-Chapel of Garioch, 2014-2021



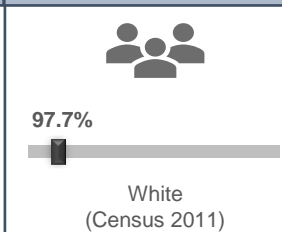
Rate of Population Change per Age Group, 2021 Compared to 2014



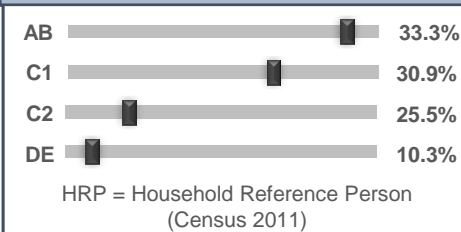
Country of Birth



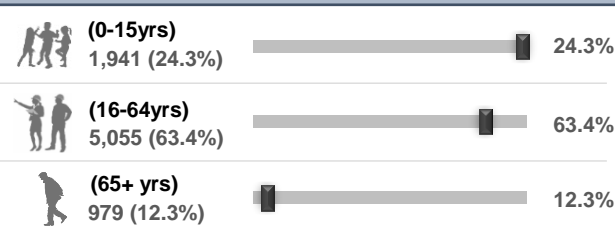
Ethnicity



Approximated Social Grade of HRP



Population per Broad Age Group, 2021



In 2021 7,975 people lived in Durno-Chapel of Garioch -- 1,941 (24.3%) were under 15 years of age, 5,055 (63.4%) were aged 16-64, and 979 (12.3%) were over 65.

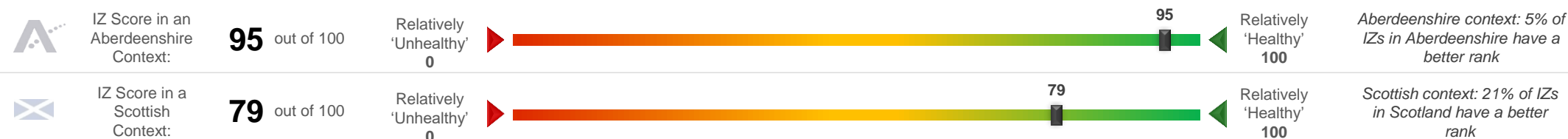
The black markers show where these percentages sit in the context of Aberdeenshire: left = low; right = high.

Durno-Chapel of Garioch Health Data (1 of 2)

SIMD 2020 Health Domain Rank		Universal Credit (UC) Limited Work Capability Households	Personal Independence Payments						
<p>Relatively Good Ranking <span style="color: green;">■</span> <span style="color: yellow;">■</span> <span style="color: orange;">■</span> <span style="color: red;">■</span> Relatively Poor Ranking</p>		<p><b>No. of Households in receipt of Universal Credit</b></p> <p>Intermediate Zone</p> <p>17000 16000 15000 14000 13000 12000</p> <p>Aberdeenshire</p> <p>Apr-21 Jun-21 Aug-21 Oct-21 Dec-21 Feb-22 Apr-22 Jun-22 Aug-22 Oct-22 Dec-22 Feb-23 Apr-23</p> <p><b>% of Households where at least 1 occupant has limited work capability (May-2023) - Aberdeenshire Context</b></p> <p>2.1%</p>	<p><b>No. of Cases with Entitlement</b></p> <p>Intermediate Zone</p> <p>160 140 120 100 80 60 40 20 0</p> <p>8500 8000 7500 7000 6500 6000</p> <p>Aberdeenshire</p> <p>Apr-21 Jun-21 Aug-21 Oct-21 Dec-21 Feb-22 Apr-22 Jun-22 Aug-22 Oct-22 Dec-22 Feb-23 Apr-23 Jun-23</p> <p><b>% of Working Age Population (16-64) Receiving PIPs (Jul-2023) - Aberdeenshire Context</b></p> <p>1.8%</p>						
<p><b>Day-to-Day Activities</b></p> <p>Proportion of people whose day-to-day activities are limited a little or a lot - Aberdeenshire Context (Census 2011)</p> <p>9.1%</p>	<p><b>Health Rating</b></p> <p>Proportion of people who rated their health as either 'good' or 'very good' - Aberdeenshire Context (Census 2011)</p> <p>93.5%</p>	<p>According to monthly health-related benefits data, the number of households on Universal Credit has increased over the course of the last few months, generally following the Aberdeenshire trend. The number of households with Limited Work Capability or LWC (due to physical or mental health issues) has remained relatively high since the peak period, now affecting 64 households, up from 10 in January 2020. The IZ figure of 2.1% of households with at least 1 occupant assessed as having LWC is towards the lower end of the Shire spectrum, but an increase based on last year's reporting cycle.</p> <p>A lower proportion of the Working Age Population (1.8%) receive Personal Independence Payments (PIPs). This helps with some of the extra costs caused by long-term disability, ill-health or terminal ill-health. The IZ trend has decreased over recent months in line with the Aberdeenshire trend. Again, the 1.8% figure is among the lowest in Aberdeenshire, perhaps reflecting the younger age profile of the area.</p> <p>According to SIMD 2020 data, a number of DZs are among the least health deprived in Scotland. Very few Data Zones in Scotland have registered a better health ranking, according to the official statistics measuring national aspects of deprivation.</p>							
<p><b>SIMD 2020 Health Domain Indicators per each Data Zone in the Durno-Chapel of Garioch Intermediate Zone (compared to Aberdeenshire average)</b></p>									
<p><b>SIMD Health Domain Indicator (Data Zones colour-coordinated with map) &gt;&gt;</b></p>		<p>S01006909</p>	<p>S01006910</p>	<p>S01006911</p>	<p>S01006912</p>	<p>S01006913</p>	<p>S01006914</p>	<p>S01006915</p>	<p>Shire</p>
<p>Health Domain Rank (see map for colour-coded rankings) (the higher, the better)</p>		6888	6814	6552	6878	6725	6959	6419	5,254
<p>Comparative Illness Factor (Scotland = 100) (the lower, the better)</p>		25	30	35	20	25	15	35	58
<p>Emergency stays in hospital (Scotland = 100) (the lower, the better)</p>		43.6	51.4	55.8	54.7	56.6	39.2	61.3	71.5
<p>Hospital stays related to alcohol misuse (Scotland = 100) (the lower, the better)</p>		27.9	10.7	17.2	12.2	25.0	14.2	12.6	45.4
<p>Hospital stays related to drug misuse (Scotland = 100) (the lower, the better)</p>		0.0	41.1	53.7	0.0	0.0	0.0	0.0	30
<p>Proportion of live singleton births of lowbirth weight (the lower, the better)</p>		0.0%	3.6%	4.6%	4.0%	6.7%	5.6%	7.7%	4.0%
<p>Proportion of population being prescribed drugs for anxiety, depression or psychosis</p>		10.5%	9.4%	12.5%	11.7%	14.2%	12.3%	13.3%	15.6%
<p>Standardised Mortality Ratio (Scotland = 100) (the lower, the better)</p>		50	39	44	65	61	41	108	85

Durno-Chapel of Garioch Health Data (2 of 2)

Durno-Chapel of Garioch's position on the 'Health Spectrum' – Aberdeenshire and Scottish Context (the higher the score, the better)



Selection of ScotPHO indicators, Durno-Chapel of Garioch IZ compared to Aberdeenshire & Scotland (latest data)

Indicator	Latest Available Figures				IZ Trend	Indicator Measurement
	IZ	IZ's latest figure compared to:				
		Aberdeenshire	Scotland			
Alcohol-related hospital stays	71.7	-73.0%		-88.3%	Down	Rate per 100,000 pop.
All-cause mortality among the 15-44 year olds	102.5	8.5%		-12.5%	Up	Rate per 100,000 pop.
Babies exclusively breastfed at 6-8 weeks	40.3	-0.3%		8.5%	Down	% of babies with a valid feeding status
Bowel screening uptake	77.0	3.9%		11.4%	Up	% of eligible people (aged 50-74)
Child dental health in primary 1	87.9	9.1%		14.7%	Down	% of P1 pupils
Child dental health in primary 7	91.5	11.7%		16.5%	Up	% of P7 pupils
Child healthy weight in primary 1	84.4	7.0%		14.6%	Down	% of P1 pupils
Deaths all ages	846.9	-20.0%		-28.3%	Down	Rate per 100,000 pop.
Developmental concerns at 27-30 months	1.7	-1.1%		-12.9%	Down	% of children reviewed
Early deaths from cancer (<75)	147.9	12.2%		-1.1%	Up	Rate per 100,000 pop.
Early deaths from coronary heart disease (<75)	17.1	-54.7%		-67.4%	Down	Rate per 100,000 pop.
Female life expectancy	83.9	2.5%		3.9%	Down	Life expectancy at birth in years
Healthy birth weight	81.5	-1.6%		-2.7%	Up	% of all singleton births
Immunisation uptake at 24 months - 6 in 1	98.0	0.2%		1.0%	Up	% of children in relevant age group
Immunisation uptake at 24 months - MMR	97.0	2.2%		2.6%	Up	% of children in relevant age group
Male life expectancy	81.4	4.8%		6.4%	Down	Life expectancy at birth in years
Maternal obesity	16.0	-8.5%		-10.2%	Down	% of women at antenatal booking
Patients (65+) with multiple A&E hospitalisations	5986.8	-4.9%		-12.3%	Down	Rate per 100,000 pop.
Patients hospitalised with asthma	21.5	-32.8%		-68.6%	Down	Rate per 100,000 pop.
Patients hospitalised with COPD	29.5	-74.8%		-85.8%	Up	Rate per 100,000 pop.
Patients hospitalised with coronary heart disease	200.5	-31.8%		-41.3%	Down	Rate per 100,000 pop.
Patients with emergency hospitalisations	3910.9	-25.9%		-46.0%	Down	Rate per 100,000 pop.
Premature births	7.5	-1.8%		-0.8%	Down	% of all live births
Uptake of the HPV vaccine in S3 girls	88.7	-0.7%		3.9%	Down	% of S3 girls

Based on the 24 health-related indicators in the table, this IZ has one of the best health profiles in Aberdeenshire and, indeed, Scotland. The ranking has slightly deteriorated since the previous reporting cycle but residents within the area still experience some of the best health outcomes in the region.

The area compares favourably to most other areas in Scotland in terms of a range of health-related outcomes, particularly in relation to Patients with emergency hospitalisations; Alcohol-related hospital stays; Patients hospitalised with COPD; Bowel screening uptake; Developmental concerns at 27-30 months; Patients hospitalised with coronary heart disease; Patients hospitalised with asthma; and Early deaths from coronary heart disease (<75). In each instance the area is in the top 10% in Scotland.

Issues that may require further investigation include:

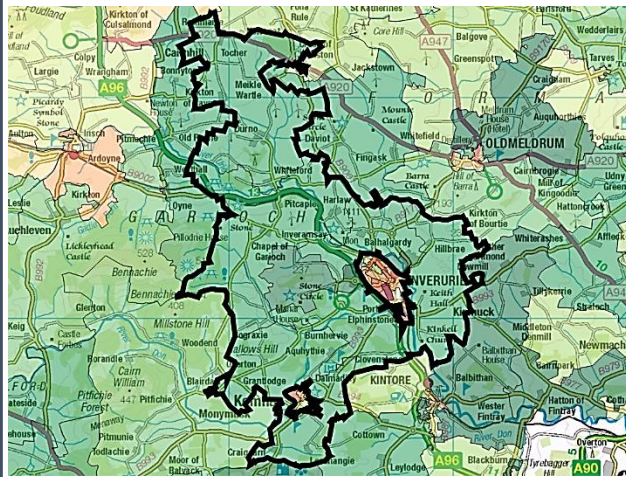
- Early deaths from cancer (aged <75).
- Healthy birthweight; and
- All-cause mortality among the 15-44 year olds.

With regards to this particular indicator the IZ compares less favourably to other areas in Aberdeenshire and, to some extent, Scotland.



## Durno-Chapel of Garioch Economic Data (1 of 3)

### Rank of Household Income per Data Zone (2023)



Relatively low ■ ■ ■ ■ ■ Relatively high

In terms of household income, this IZ is among the most affluent in Aberdeenshire. The median household income in 2023 equated to £57,752, which is £15,996 higher than the Shire average (£41,756). The gap is similar to last year.

Median household income ranges from £54,466 in DZ S01006915 (area covering the northern portion of the IZ, including Durno and North Rayne) to £66,178 in DZ S01006909 (west of Inverurie, including the area around John Sorrie Playing Fields).

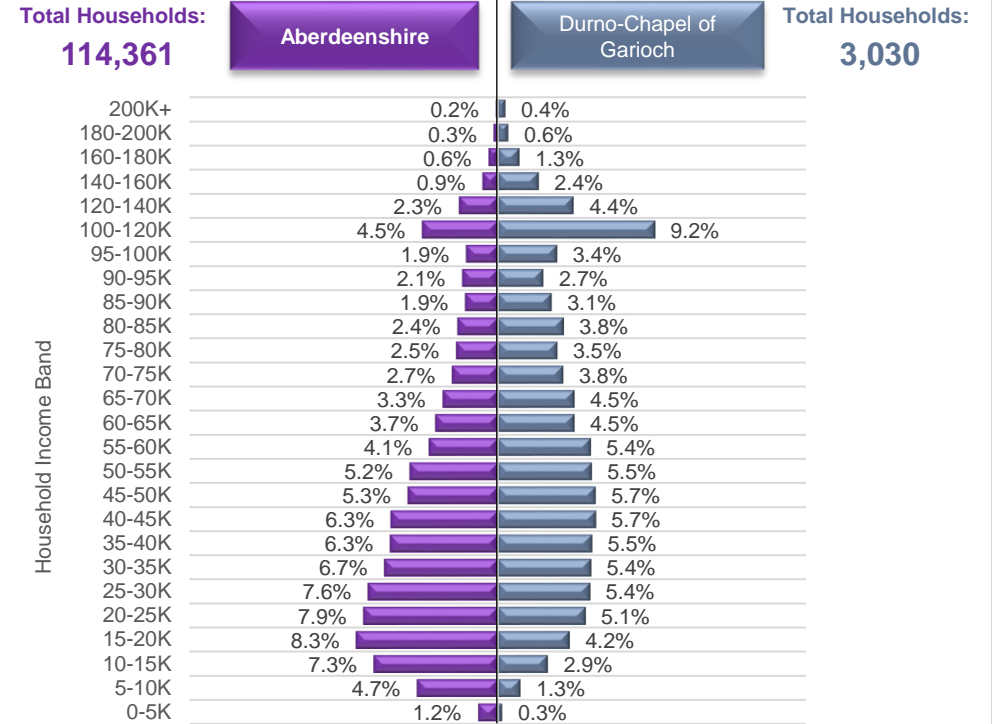
Approximately 1.6% of households in this IZ earn less than £10,000 per year, which is much lower-than-average (5.3%). This equates to roughly 48 households. Areas in and around Whiteford tend to contain a higher-than-average proportion of such households in the context of this IZ.

High income households tend to be situated to the northwest of Inverurie, around places like Cairn Wynd, Braeview, Dillyhill Way, and Brockhill Rise, as well as in areas to the east of the town.

### Household Income per Data Zone (2023)

Data Zone	Households	Average Income	Median Income	Lower Quartile Income
S01006909	496	£ 73,264	£ 66,178	£ 40,910
S01006910	490	£ 64,466	£ 56,699	£ 34,440
S01006911	272	£ 70,401	£ 63,366	£ 39,644
S01006912	351	£ 61,891	£ 54,610	£ 33,772
S01006913	814	£ 62,983	£ 55,554	£ 34,041
S01006914	272	£ 64,426	£ 56,458	£ 34,036
S01006915	335	£ 62,080	£ 54,466	£ 32,687

### Household Income per Band, Durno-Chapel of Garioch & Aberdeenshire (2023)



© CACI Limited 1996 - 2022 This report shall be used solely for academic, personal and/or non-commercial purposes. The applicable copyright notices can be found at <https://www.caci.co.uk/copyrightnotices.pdf>

### Median Household Income (2023)



**£57,752**

Aberdeenshire: £41,756  
£57,752



### % of Households Earning Less Than £10k (2023)



**<£10K**

**1.6%**

Aberdeenshire: 5.3%



### % of Households Earning More Than £100k (2023)



**>£100K**

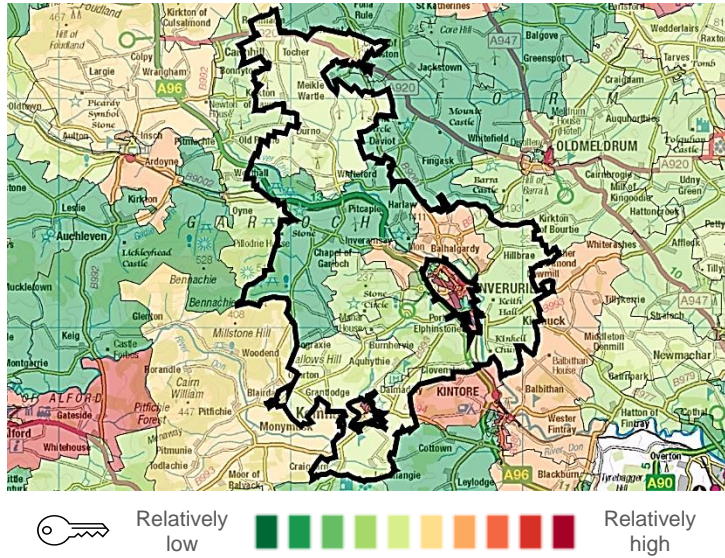
**18.3%**

Aberdeenshire: 10.1%

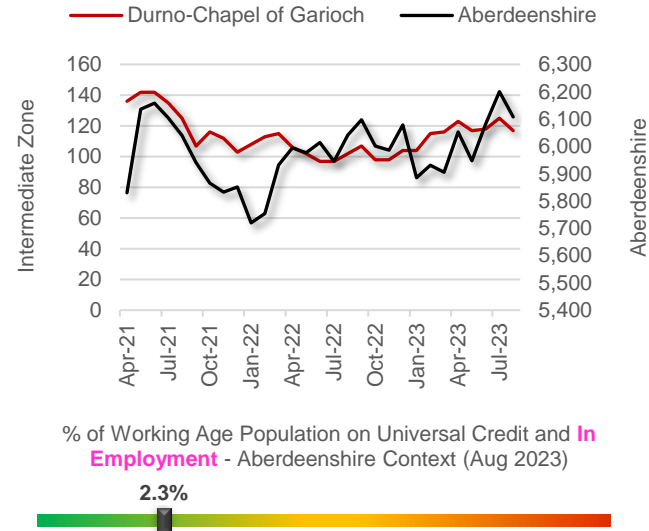


Durno-Chapel of Garioch Economic Data (2 of 3)

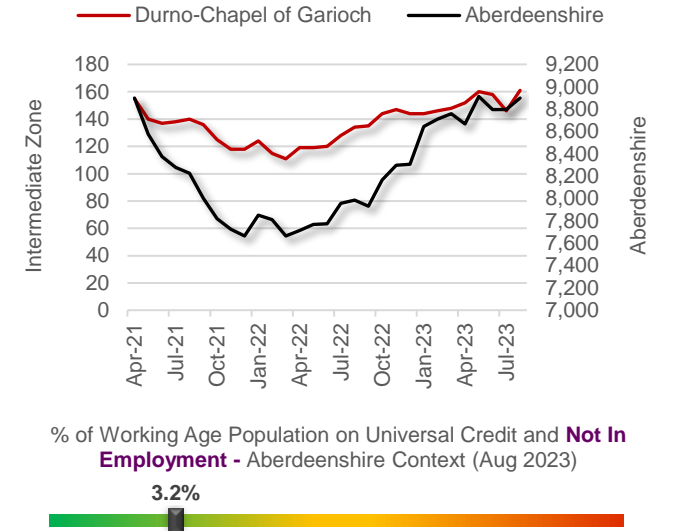
Latest Unemployment Rate - Ranking per Data Zone



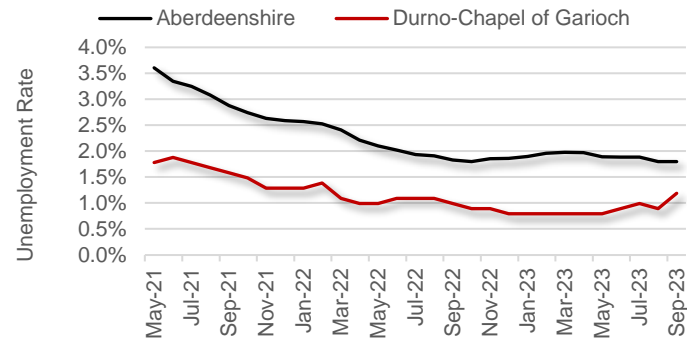
People on Universal Credit - In Employment



People on Universal Credit - Not In Employment



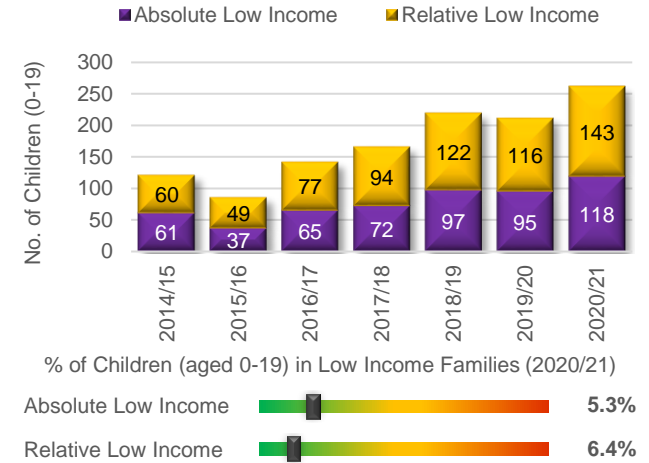
Alternative Claimant Count - Effective 'Unemployment Rate'



Durno-Chapel of Garioch's Alternative Claimant Count (Unemployment Rate) - Aberdeenshire Context (Sep 2023)



Children in Low Income Families



Summary

The number of people claiming Universal Credit (UC) - who are also in employment - has increased slightly over the last few months, in keeping with the Shire-wide trend. Latest figures show 2.3% of people aged 16-64 (who also have jobs) are claiming UC. This is among the lowest rates in Aberdeenshire. A similar story emerges in relation to people on UC and not in employment.

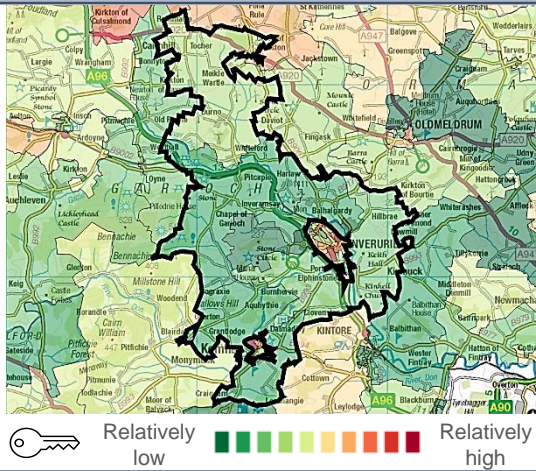
Like Aberdeenshire, the unemployment rate in the IZ has fallen substantially since the December 2020 peak of 3.2%. Latest data suggests approximately 1.2% of the Working Age population is currently out-of-work, which is one of the lowest rates in Aberdeenshire. The IZ rate ranges from 0.0% (S01006914, large area in the north-west portion of the IZ, which includes Chapel of Garioch) to 1.8% (S01006913, the DZ covering the Highfield and Mains of Blackhall area outside Inverurie).

The proportion of children living in low-income households is among the lowest in the Shire. However, the rising figures suggest the issue may be coming more to the fore over recent years.

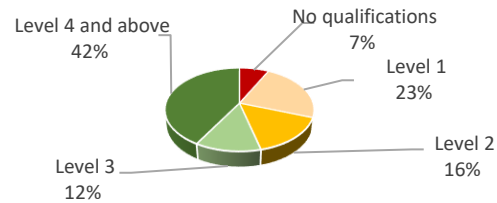


Durno-Chapel of Garioch Economic Data (3 of 3)

People With No Qualifications, Census 2011



% of Employees per Qualification Type



Summary

The employment numbers per broad industrial group relate to the kind of jobs within the area, which may be filled by those living outwith the IZ.

This IZ is one of the biggest employment regions in Aberdeenshire terms of the number of people employed, and that number has increased quite considerably after the Covid lockdowns of 2020. Major industries in terms of jobs in the area include the Professional, etc. sector, as well as Manufacturing, Wholesale, Public admin., and Construction. A jobs boost was registered for Architectural and engineering activities and related technical consultancy over the course of 2022 relative to previous years. This specific job type largely accounts for the increase in jobs year-on-year.

While the number of smaller enterprises has remained relatively stable over the past few years, the area appears to have gained a few enterprises in the £1 million+ turnover band. This appears to relate to companies in the Wholesale, Agricultural, as well as Construction sectors. These latter two sectors also account for the reductions seen by enterprises in the £100-199K bracket, which accounts for the greatest number of enterprises in the region. The Professional sector also registered a decrease in enterprises within this bracket.

Approximate Employment Count per Broad Industrial Group, Durno-Chapel of Garioch, 2020-22

Broad Industrial Group	2020	2021	2022	2020-22 % Diff.
Agriculture, forestry & fishing	25	40	0	-100%
Mining, quarrying & utilities	40	40	10	-75%
Manufacturing	300	300	400	33%
Construction	175	200	225	29%
Motor trades	50	50	50	0%
Wholesale	300	350	350	17%
Retail	150	150	150	0%
Transport & storage (inc postal)	50	40	50	0%
Accommodation & food services	125	125	175	40%
Information & communication	50	20	35	-30%
Financial & insurance	20	50	75	275%
Property	25	25	20	-20%
Professional, scientific & technical	350	350	600	71%
Business administration & support services	200	300	150	-25%
Public administration & defence	175	175	175	0%
Education	100	175	150	50%
Health	75	75	50	-33%
Arts, entertainment, recreation & other services	75	75	75	0%
<b>Total</b>	<b>2,285</b>	<b>2,540</b>	<b>2,740</b>	<b>20%</b>

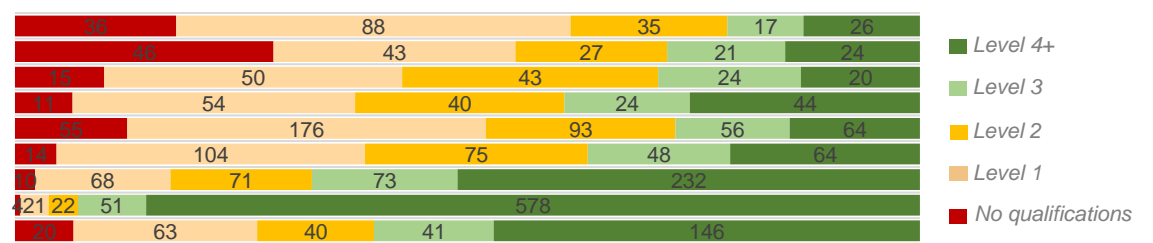
Approximate Number of Enterprises per Turnover Band (£), Durno-Chapel of Garioch, 2021-23

Turnover	2021	2022	2023	2021-23 % Diff.
£1m+	10	25	25	150%
£500-999k	15	5	20	33%
£200-499k	30	35	35	17%
£100-199k	140	120	125	-11%
£50-99k	100	100	75	-25%
£0-49k	75	75	85	13%

Employees per Occupation Type, Census 2011

Elementary occupations	202
Process, plant and machine operatives	161
Sales and customer service occupations	152
Caring, leisure and other service occupations	173
Skilled trades occupations	444
Administrative and secretarial occupations	305
Associate professional and technical...	454
Professional occupations	676
Managers, directors and senior officials	310

Employees per Qualification & Occupation Type, Census 2011





Durno-Chapel of Garioch Housing Data



Relatively sparse / rural

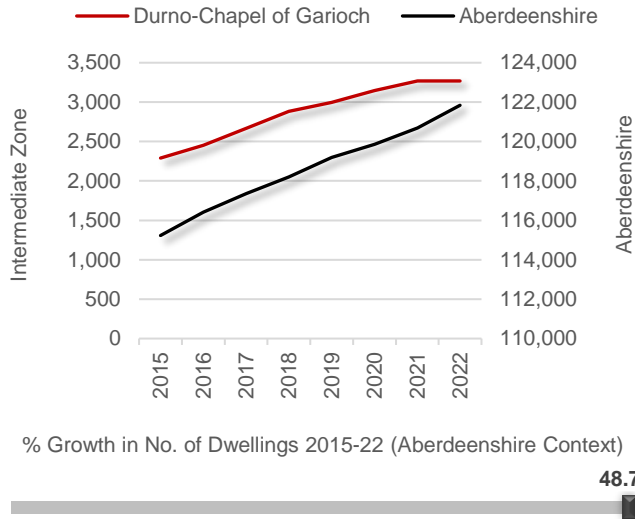
Dwellings per Hectare (2022)

0.25



Relatively dense / urban

Number of Dwellings, 2015-22



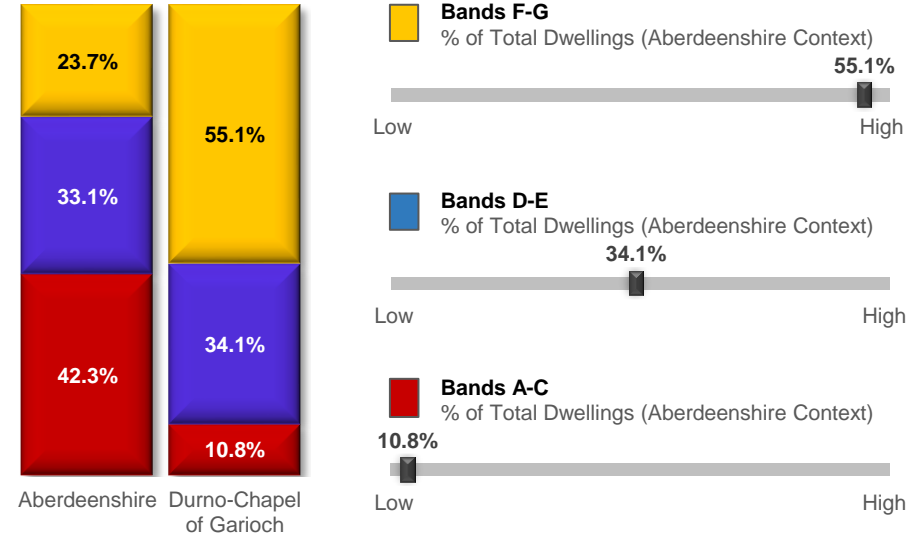
Summary

At 0.25 dwellings per hectare, this IZ is on the more rural side of the spectrum, despite the fact that some DZs encompass parts of what residents would likely consider the town of Inverurie (even though Inverurie is part of another IZ).

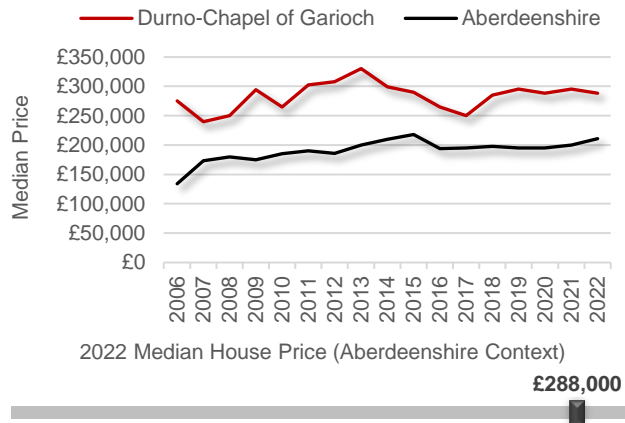
The number of dwellings in the IZ has increased by 48.7% since 2015, which is the highest growth rate in Aberdeenshire over that period, a natural outcome given the area experienced the greatest population increase in the authority area over a similar period. A relatively large proportion of the dwellings in this IZ (55.1%) fall within Council Tax Bands F-G. This puts the IZ towards the higher end of the spectrum in this particular regard.

The median house price is £288,000 which is approximately £77,000 higher than the Aberdeenshire average (£210,995). Single Person Discounts have increased every year since 2014 (up from 347 to 733 in 2022), outpacing the percentage growth of dwellings over that period.

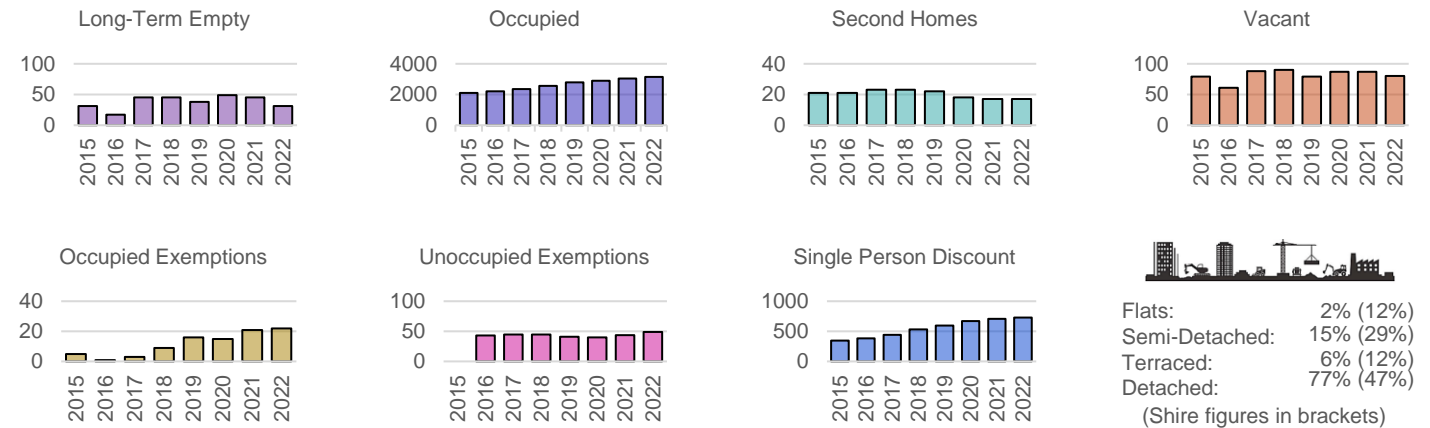
Proportion of Dwellings per Council Tax Band, 2022



Median Residential House Prices (Sales), 2006-22

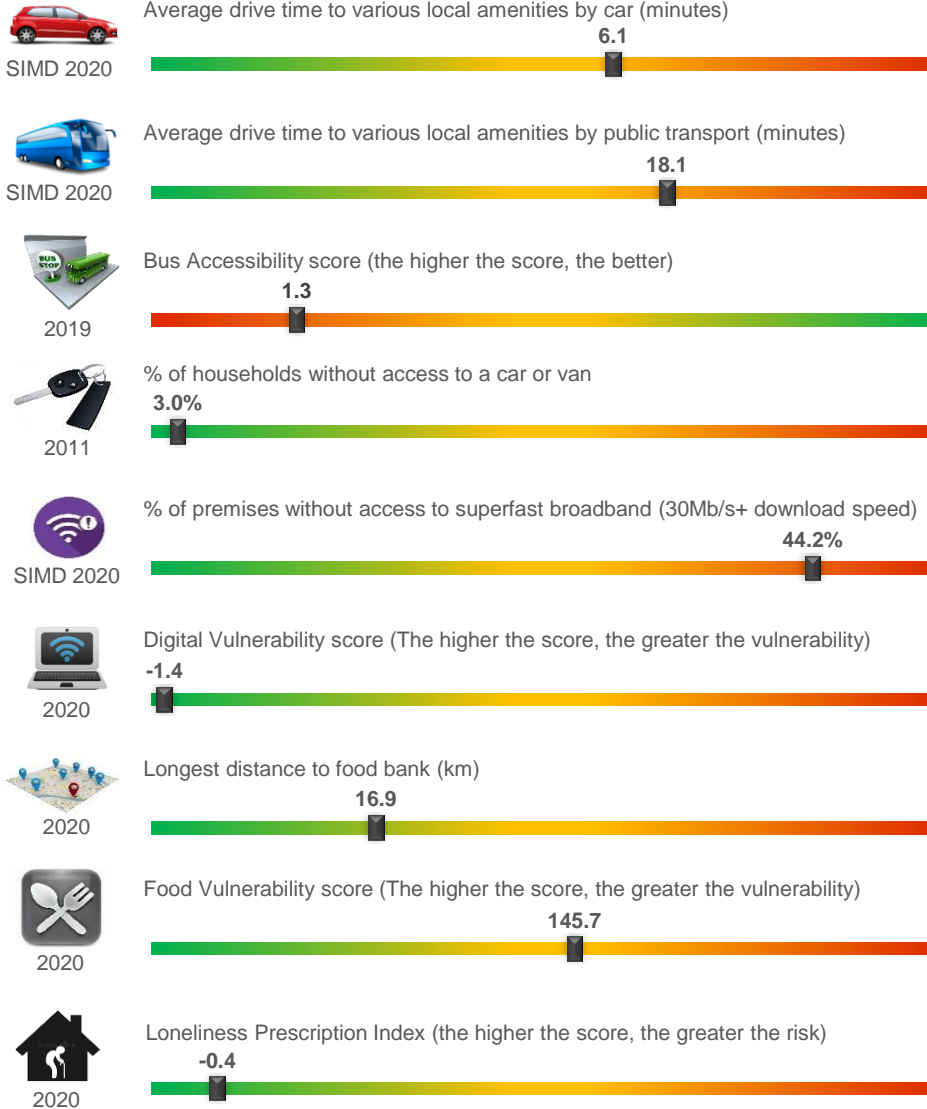


Housing Types, 2015-22 (Data on Flats, etc., relate to 2017 - the latest year for which data are available)

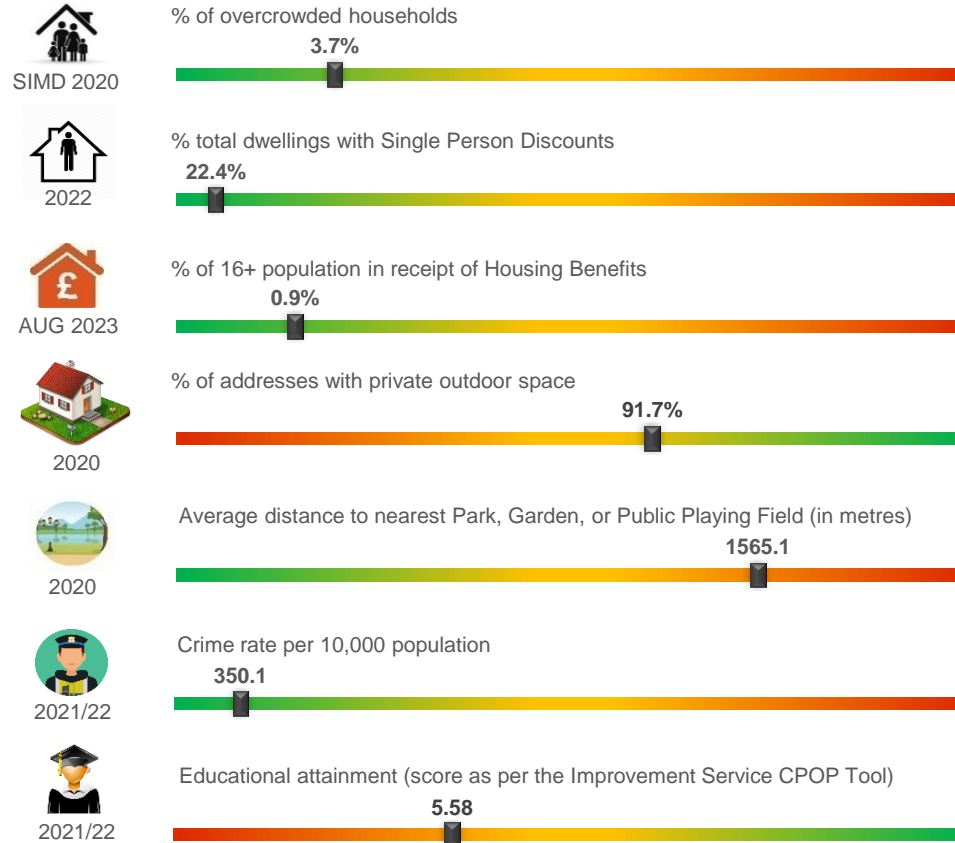


## Durno-Chapel of Garioch Other Socio-Economic Data

### Geographic Access / Digital Connectivity / Food Vulnerability / Loneliness Proxy



### Housing / Environment / Crime Rate / Educational Attainment



#### Summary

The miscellaneous socio-economic indicators on this page tend to suggest residents in the area are relatively well-served in relation to multiple aspects of life. However, given the rural nature of the area, it tends to suffer a bit in respect of some of the 'remoteness' indicators.

For example, drive times to various local amenities via car and public transport are relatively high, and bus accessibility is relatively poor. Access to superfast broadband is also sub-optimal in some areas, particularly across the western portion of the IZ, (Chapel of Garioch) and in the area around North Rayne. Areas to the east of the Boynds part of Inverurie will also likely be less-than-ideal.

The crime rate is among the lowest in Aberdeenshire.