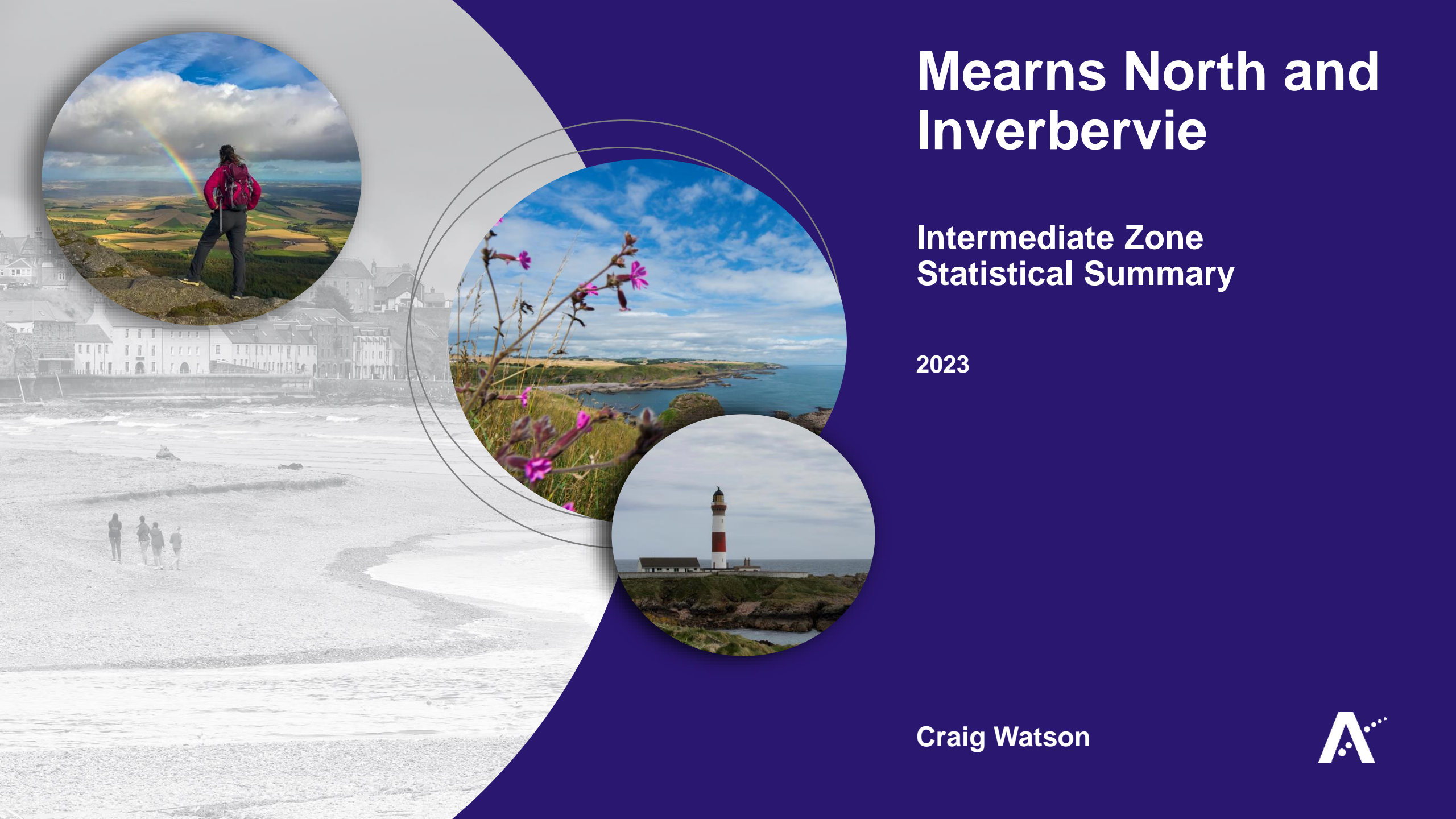


Mearns North and Inverbervie

Intermediate Zone Statistical Summary

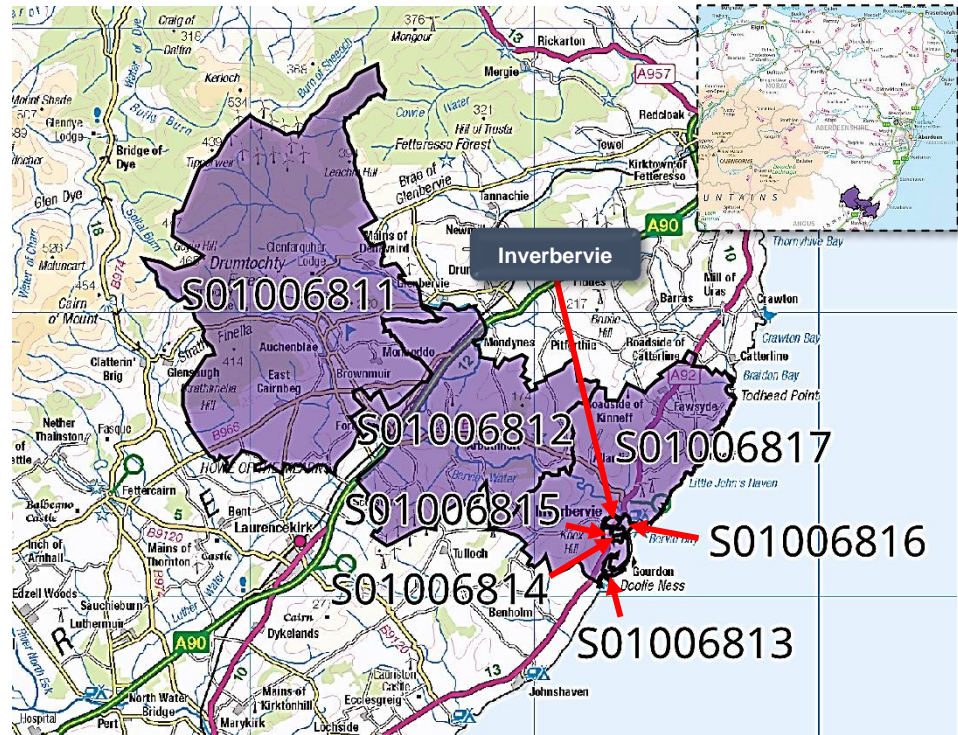
2023

Craig Watson

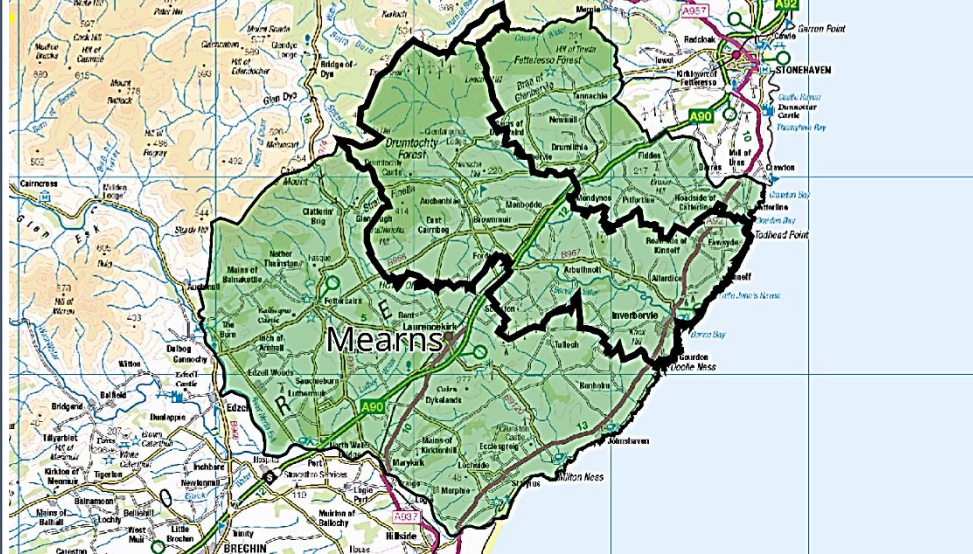


Mearns North and Inverbervie

Data Zones Within the Intermediate Zone



Relevant Multi-Member Wards



Notes on the Maps

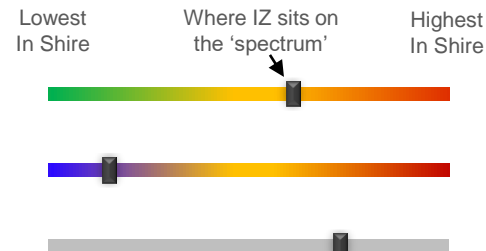
The map on the left shows the location and geographic area of the Mearns North & Inverbervie Intermediate Zone. It contains 7 Data Zones. The town of Inverbervie contains 3 Data Zones – S01006814, S01006815, and S01006816.

Only one MMW straddles the Intermediate Zone (Mearns).

Spectrum Charts Explained

The following statistical pages frequently utilise spectrum charts as a visual aid to accompany an indicator. They are used to place the relevant Intermediate Zone (IZ) in the context of all other IZs in Aberdeenshire with regards to that indicator.

The charts to the right are examples of the spectrum charts used in this report. The black line represents where the IZ sits in the context of the highest and lowest figures in Aberdeenshire. If the black line is situated towards the left-hand side, the IZ recorded one of the lowest figures in Aberdeenshire. Conversely, if the black line is towards the right-hand side, it recorded one of the highest figures in Aberdeenshire.



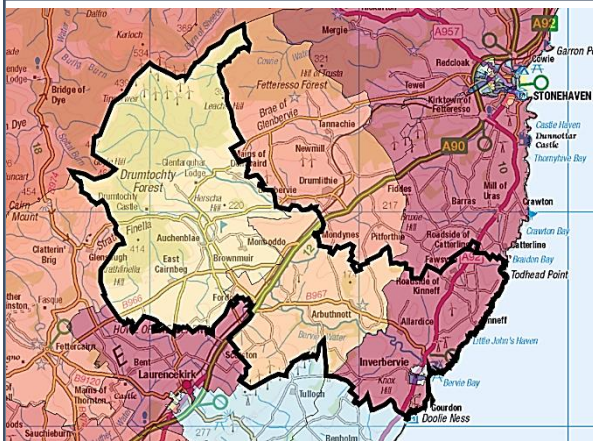
The green/red spectrum charts are the most common type. If the black line is situated towards the red end of the spectrum, it means the figure is objectively worse than most other IZs in Aberdeenshire and vice versa.

The blue/red spectrum charts are used in the demographic section to denote high population growth (red) and population decline (blue).

The grey spectrum charts are simply used to denote high and low in the context of Aberdeenshire, where the high / low figure is neither good nor bad. An example would be the proportion of dwellings that fall within Council Tax Bands F-G.

Mearns North and Inverbervie Demographic Data

Map of Mearns North and Inverbervie: Population Change (2014-2021)



Low Growth / Depopulation (Blue) High Growth (Red)

The population in this IZ decreased by 1.1% between 2014 and 2021, with varying outcomes among the 7 DZs in the area - 5 of which saw their population decrease, while 2 experienced increases.

The greatest increases were seen in DZs nearer the coastline, excluding Inverbervie, which saw its population decrease quite considerably over the last few years. DZ S01006814 in particular saw its population decrease by 12.7% over the years. This covers the south-western portion of Inverbervie (West Park) and some of the more central areas (Bayview Road, Trenchard Way, etc.). This area also has a relatively high proportion of people in their early 50's compared to other DZs in the region. It is also a high-income DZ.

The DZ with the highest growth rate generally saw increases across most age groups, particularly those aged 10-19.

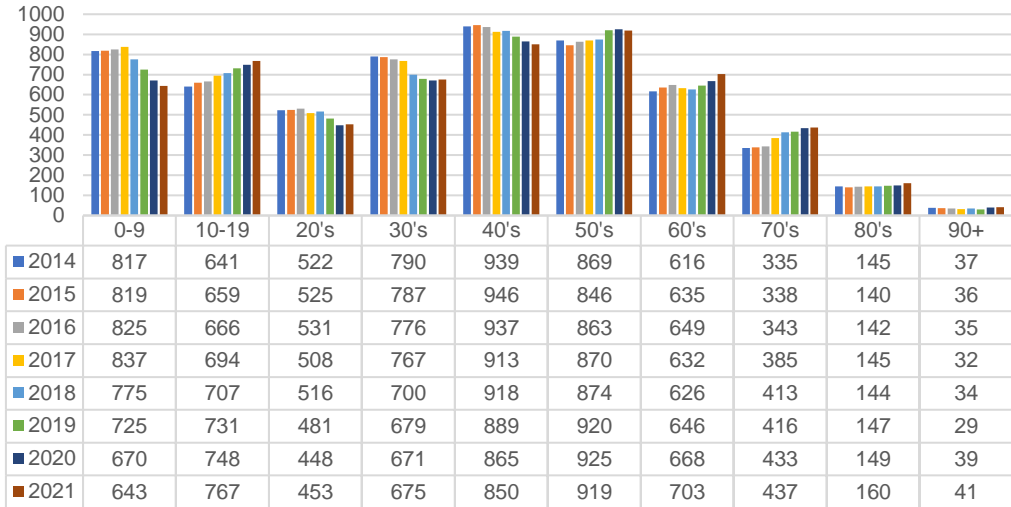
Population Change per Data Zone, 2014 & 2021

Data Zone	2014	2021	% Difference
S01006811	1120	1088	-2.9%
S01006812	889	888	-0.1%
S01006813	794	846	6.5%
S01006814	819	715	-12.7%
S01006815	611	587	-3.9%
S01006816	780	750	-3.8%
S01006817	698	774	10.9%
Total	5711	5648	-1.1%

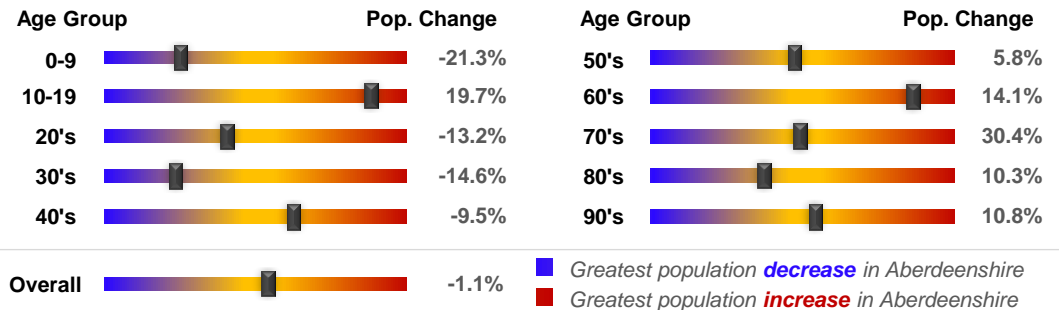
In terms of the wider IZ area, longer term decreases were registered for those in their 20's, 30's and 40's, albeit those in their 30's increased year-on-year. The 0-9 age group also decreased but there was a corresponding increase in the number of people aged 10-19 suggesting children in the area simply aged. But the fall in the 0-9 age group since 2014, coupled with the fall in people aged 20-50, could also mean that newer, younger families are less common in the area compared to a few short years ago.

That notwithstanding, the child population relative to the total population remains relatively high in an Aberdeenshire context (20.4%).

Population per Age Group, Mearns North and Inverbervie, 2014-2021



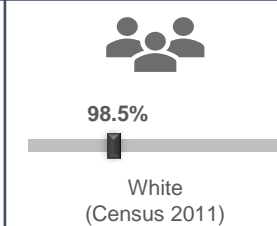
Rate of Population Change per Age Group, 2021 Compared to 2014



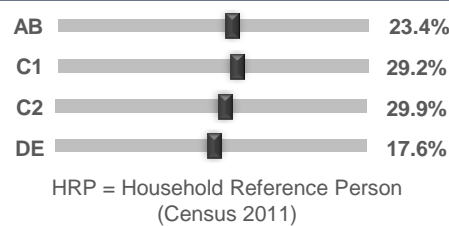
Country of Birth



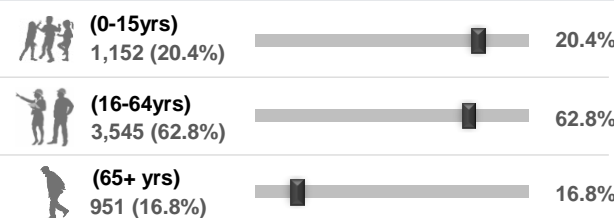
Ethnicity



Approximated Social Grade of HRP



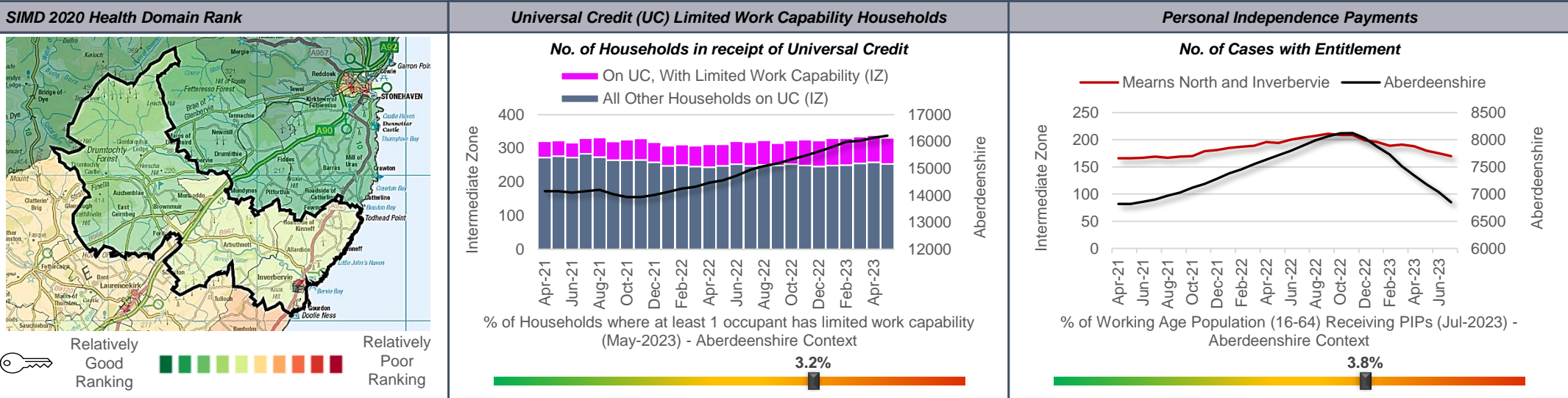
Population per Broad Age Group, 2021



In 2021 5,648 people lived in Mearns North and Inverbervie -- 1,152 (20.4%) were under 15 years of age, 3,545 (62.8%) were aged 16-64, and 951 (16.8%) were over 65.

The black markers show where these percentages sit in the context of Aberdeenshire: left = low; right = high.

Mearns North and Inverberrie Health Data (1 of 2)



Day-to-Day Activities	Health Rating
Proportion of people whose day-to-day activities are limited a little or a lot - Aberdeenshire Context (Census 2011) 14.1%	Proportion of people who rated their health as either 'good' or 'very good' - Aberdeenshire Context (Census 2011) 87.9%

According to monthly health-related benefits data, the number of households on Universal Credit has remained relatively steady since the peak in March 2021, albeit reductions have been registered. However, the number of households with Limited Work Capability or LWC (due to physical or mental health issues) has likewise increased and remained relatively high throughout. The IZ figure of 3.2% of households with at least 1 occupant assessed as having LWC is toward the higher end of the spectrum in an Aberdeenshire context, and an increase on last year. Approximately 80 households are now affected, up from 48 in April 2021.

A higher proportion of the Working Age Population (3.8%) receive Personal Independence Payments (PIPs). This helps with some of the extra costs caused by long-term disability, ill-health or terminal ill-health. The IZ trend has decreased over recent months. The 3.8% figure is on the high side in an Aberdeenshire context but not markedly so. However, it may be considered unusual given the younger age profile of the area.

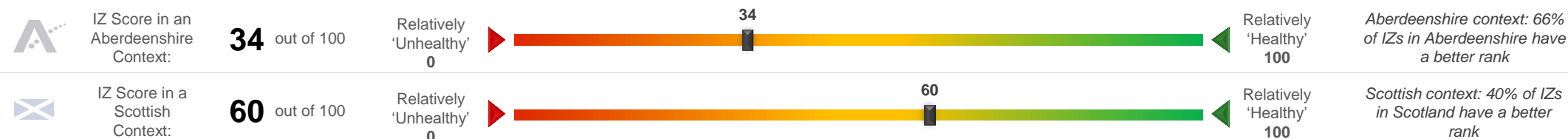
According to SIMD 2020 data, DZ S01006814 has the best health ranking and S01006815 has the worst. Both are in Inverberrie. The best ranked DZ covers the southwestern portion (West Park) and some central areas. The worst ranked DZ covers the northwest part of town near Bervie School.

SIMD 2020 Health Domain Indicators per each Data Zone in the Mearns North and Inverberrie Intermediate Zone (compared to Aberdeenshire average)

SIMD Health Domain Indicator (Data Zones colour-coordinated with map) >>	S01006811	S01006812	S01006813	S01006814	S01006815	S01006816	S01006817	Shire
Health Domain Rank (see map for colour-coded rankings) (the higher, the better)	6398	5845	5155	6904	3628	4509	5646	5,254
Comparative Illness Factor (Scotland = 100) (the lower, the better)	40	50	50	25	85	70	50	58
Emergency stays in hospital (Scotland = 100) (the lower, the better)	67.8	73.7	82.3	53.9	102.5	79.4	66.6	71.5
Hospital stays related to alcohol misuse (Scotland = 100) (the lower, the better)	47.3	16.7	50.2	4.7	55.6	43.9	35.6	45.4
Hospital stays related to drug misuse (Scotland = 100) (the lower, the better)	0.0	0.0	0.0	0.0	0.0	21.3	36.3	30
Proportion of live singleton births of lowbirth weight (the lower, the better)	2.5%	14.7%	2.7%	3.0%	3.4%	0.0%	0.0%	4.0%
Proportion of population being prescribed drugs for anxiety, depression or psychosis	10.5%	11.0%	14.6%	9.2%	19.4%	14.6%	12.6%	15.6%
Standardised Mortality Ratio (Scotland = 100) (the lower, the better)	46	98	151	39	112	128	102	85

Mearns North and Inverbervie Health Data (2 of 2)

Mearns North and Inverbervie's position on the 'Health Spectrum' – Aberdeenshire and Scottish Context (the higher the score, the better)



Selection of ScotPHO indicators, Mearns North and Inverbervie IZ compared to Aberdeenshire & Scotland (latest data)

Indicator	Latest Available Figures				IZ Trend	Indicator Measurement
	IZ	IZ's latest figure compared to:				
		Aberdeenshire	Scotland			
Alcohol-related hospital stays	171.2	-35.6%		-72.0%	Up	Rate per 100,000 pop.
All-cause mortality among the 15-44 year olds	20.9	-77.8%		-82.1%	Down	Rate per 100,000 pop.
Babies exclusively breastfed at 6-8 weeks	44.8	4.2%		13.0%	Up	% of babies with a valid feeding status
Bowel screening uptake	69.7	-3.3%		4.2%	Up	% of eligible people (aged 50-74)
Child dental health in primary 1	76.5	-2.3%		3.4%	Down	% of P1 pupils
Child dental health in primary 7	87.0	7.2%		12.0%	Up	% of P7 pupils
Child healthy weight in primary 1	82.1	4.8%		12.4%	Down	% of P1 pupils
Deaths all ages	976.7	-7.7%		-17.3%	Down	Rate per 100,000 pop.
Developmental concerns at 27-30 months	1.2	-1.7%		-13.4%	Down	% of children reviewed
Early deaths from cancer (<75)	141.3	7.2%		-5.6%	Down	Rate per 100,000 pop.
Early deaths from coronary heart disease (<75)	58.1	53.9%		10.6%	Up	Rate per 100,000 pop.
Female life expectancy	82.6	0.9%		2.3%	Up	Life expectancy at birth in years
Healthy birth weight	78.8	-4.3%		-5.4%	Down	% of all singleton births
Immunisation uptake at 24 months - 6 in 1	95.3	-2.5%		-1.7%	Down	% of children in relevant age group
Immunisation uptake at 24 months - MMR	90.0	-4.8%		-4.4%	Up	% of children in relevant age group
Male life expectancy	80.0	3.0%		4.5%	Up	Life expectancy at birth in years
Maternal obesity	27.5	3.1%		1.4%	Down	% of women at antenatal booking
Patients (65+) with multiple A&E hospitalisations	7580.1	20.5%		11.1%	Down	Rate per 100,000 pop.
Patients hospitalised with asthma	27.1	-15.1%		-60.4%	Down	Rate per 100,000 pop.
Patients hospitalised with COPD	177.9	52.0%		-14.2%	Up	Rate per 100,000 pop.
Patients hospitalised with coronary heart disease	367.9	25.1%		7.7%	Down	Rate per 100,000 pop.
Patients with emergency hospitalisations	5890.1	11.5%		-18.6%	Down	Rate per 100,000 pop.
Premature births	13.7	4.4%		5.5%	Up	% of all live births
Uptake of the HPV vaccine in S3 girls	95.4	6.0%		10.6%	Up	% of S3 girls

Based on the 24 health-related indicators in the table, this IZ is situated towards the more vulnerable end of the spectrum in an Aberdeenshire but fares better when all IZs in Scotland are taken into consideration. The rankings deteriorated since the previous reporting cycle.

That said, the area compares favourably to most other areas in Scotland in terms of Developmental concerns at 27-30 months; Uptake of the HPV vaccine in S3 girls; All-cause mortality among the 15-44 year olds; and Alcohol-related hospital stays. The IZ is in the top 10% of the country regarding these particular indicators.

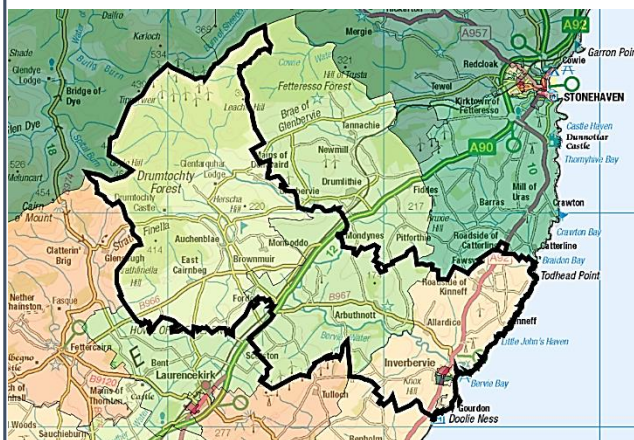
Issues that may require further investigation include:

- Maternal obesity;
- Patients (65+) with multiple emergency hospitalisations;
- Early deaths from coronary heart disease (<75);
- Patients hospitalised with coronary heart disease;
- Immunisation uptake at 24 months - 5 in 1;
- Healthy birth weight;
- Immunisation uptake at 24 months - MMR;
- Premature births;

With regards to each of the indicators listed above the IZ compares less favourably to other areas in Aberdeenshire and, in some instances, Scotland (and/or the trend is worsening).

Mearns North and Inverbervie Economic Data (1 of 3)

Rank of Household Income per Data Zone (2023)



Relatively low Relatively high

In terms of household income, this IZ is generally in keeping with the Aberdeenshire averages, with a slight bias to the more affluent end of the spectrum. The median household income in 2023 equated to £42,924, which is £1,168 higher than the Shire average (£41,756). Household income appears to have increased at a slower rate in this IZ relative to the wider region.

Median household income ranges from £29,252 in DZ S01006815 (northwest part of Inverbervie) to £57,845 in DZ S01006814 (southwest part of Inverbervie).

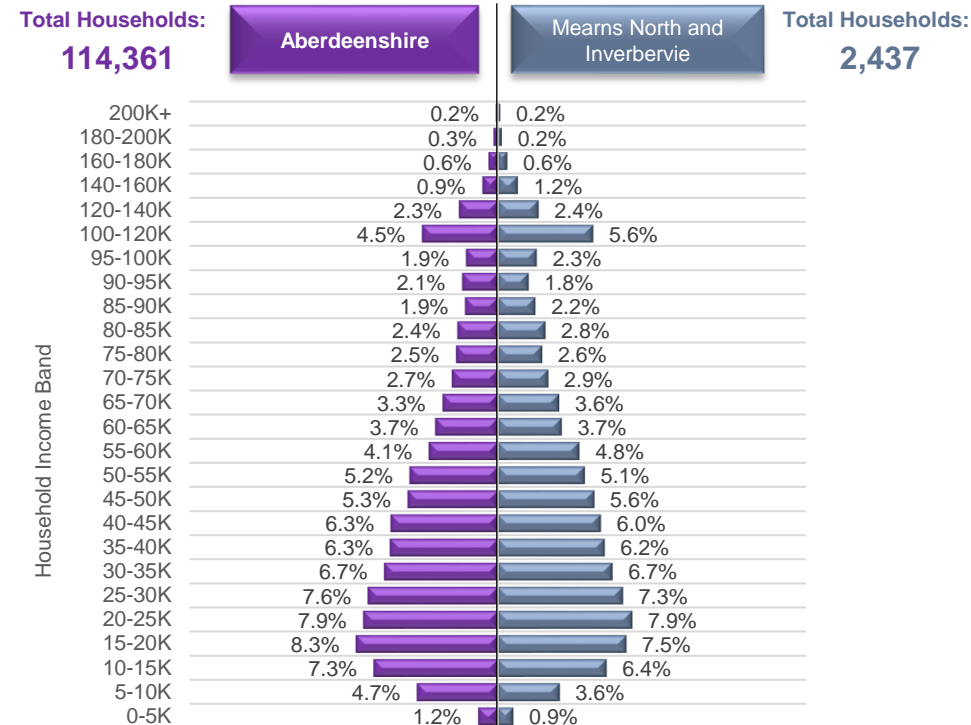
Approximately 4.5% of households in this IZ earn less than £10,000 per year. This equates to roughly 110 households, 8 fewer than last year. Areas with a particularly high concentration of such households are located in the Linton Court/Meadowside area of Inverbervie and southwest part of Fordoun.

High income households are generally located in the southwest portion of Inverbervie, just north of William Eddie Park. Curiously, this area also saw its population decline by 11% since 2013..

Household Income per Data Zone (2023)

Data Zone	Households	Average Income	Median Income	Lower Quartile Income
S01006811	455	£ 54,126	£ 46,476	£ 27,356
S01006812	380	£ 54,382	£ 46,578	£ 26,204
S01006813	365	£ 48,228	£ 40,163	£ 22,904
S01006814	273	£ 65,381	£ 57,845	£ 35,445
S01006815	309	£ 37,371	£ 29,252	£ 16,876
S01006816	327	£ 48,392	£ 40,023	£ 22,774
S01006817	328	£ 50,022	£ 42,442	£ 24,569

Household Income per Band, Mearns North and Inverbervie & Aberdeenshire (2023)



© CACI Limited 1996 - 2022 This report shall be used solely for academic, personal and/or non-commercial purposes. The applicable copyright notices can be found at <https://www.caci.co.uk/copyrightnotices.pdf>

Median Household Income (2023)



£42,924

Aberdeenshire: £41,756

£42,924



% of Households Earning Less Than £10k (2023)



<£10K

4.5%

Aberdeenshire: 5.3%

4.5%



% of Households Earning More Than £100k (2023)



>£100K

10.1%

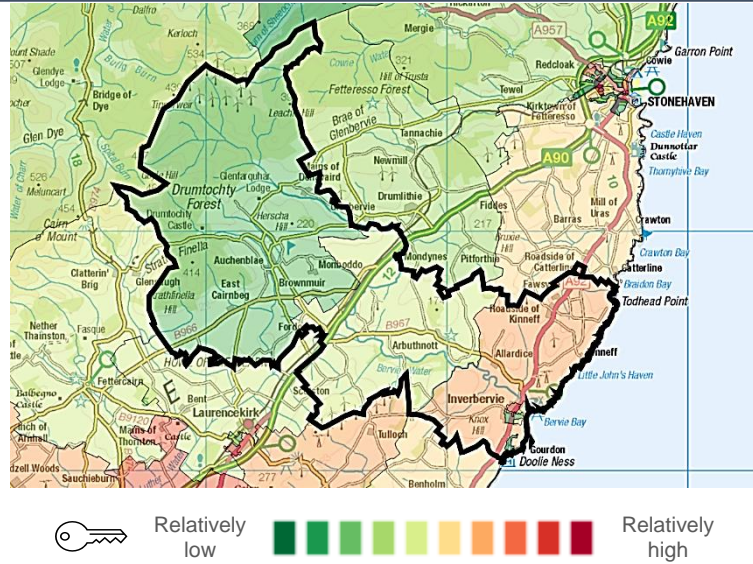
Aberdeenshire: 10.1%

10.1%

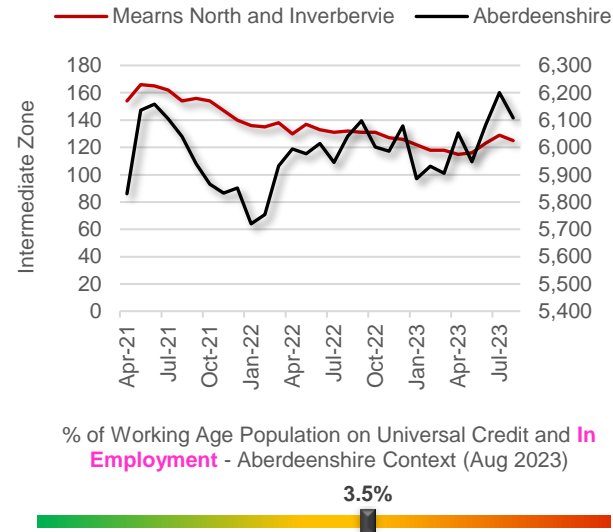


Mearns North and Inverberrie Economic Data (2 of 3)

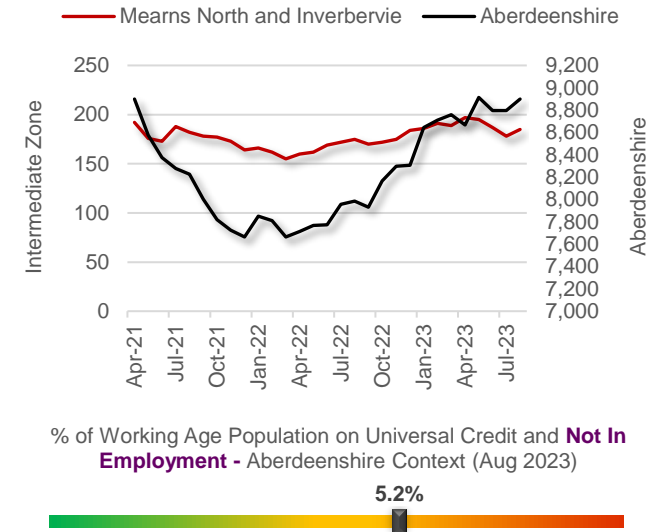
Latest Unemployment Rate - Ranking per Data Zone



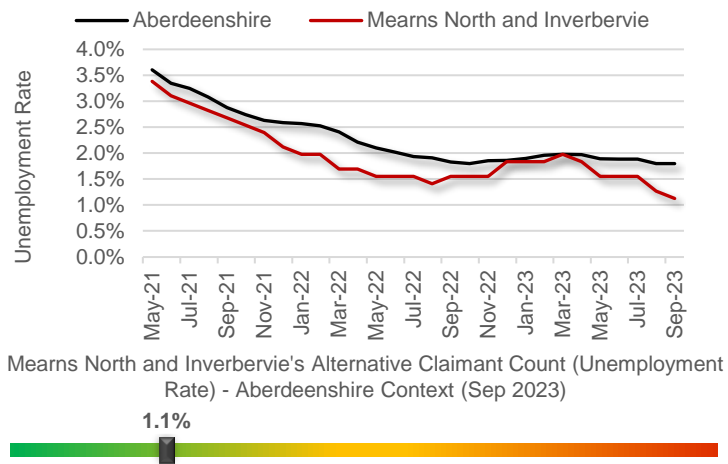
People on Universal Credit - In Employment



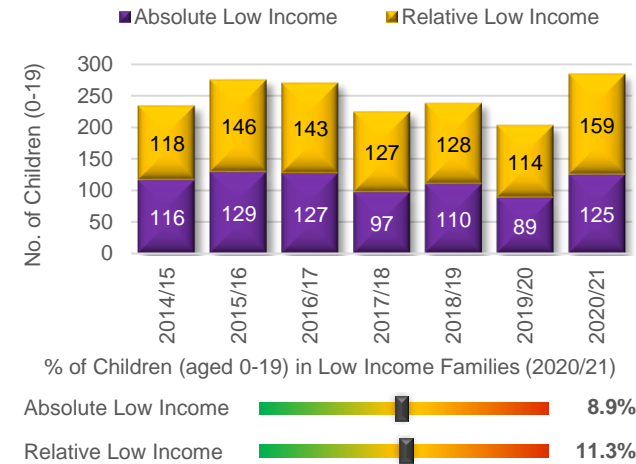
People on Universal Credit - Not In Employment



Alternative Claimant Count - Effective 'Unemployment Rate'



Children in Low Income Families



Summary

The number of people claiming Universal Credit (UC) - who are also in employment - has decreased over the course of the last two years, since the post-Covid peak. Latest figures show 3.5% of people aged 16-64 (who also have jobs) are claiming UC. This is modestly higher than the average IZ rate in Aberdeenshire but lower than the previous reporting period.

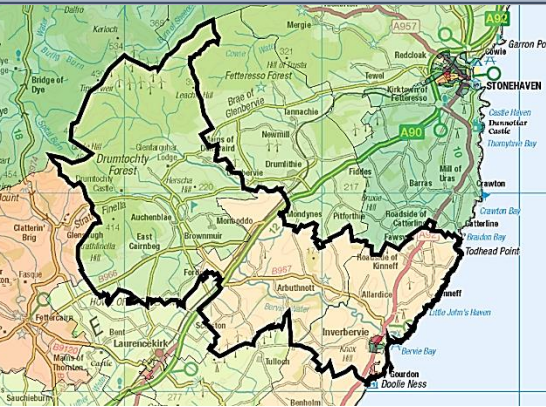
Like Aberdeenshire, the unemployment rate in the IZ has fallen substantially since the August 2020 peak of 4.3%. Latest data suggests approximately 1.1% of the Working Age population is currently out-of-work, which is lower than the Aberdeenshire-wide rate (1.8%). The rate ranges from 0.0% (S01006813, which covers the Gourdon area) to 2.2% (S01006815, which covers the northwest part of Inverberrie, and is associated with the worst SIMD health ranking in the IZ and the lowest median household income).

The proportion of children living in low-income households is in keeping with most other IZs in Aberdeenshire. However, the numbers appear to be increasing compared to a few years ago.

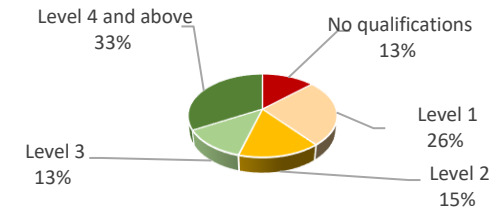
Economic Indicators

Mearns North and Inverberrie Economic Data (3 of 3)

People With No Qualifications, Census 2011



% of Employees per Qualification Type



Summary

The employment numbers per broad industrial group relate to the kind of jobs within the area, which may be filled by those living outwith the IZ.

Employment in this IZ is generally spread out among various industrial groups, the main ones being the Professional, scientific and technical sector, Retail, and Manufacturing. Unfortunately, some of the more significant industries in terms of jobs have shed numbers over the past couple of years, most notably Manufacturing and Retail. This has meant that total jobs in the area have reduced over the years.

Common job types in the area relate to architectural and engineering activities; primary education; restaurant trade; and retail. These account for about a third of the jobs in the IZ.

The area is home to a number of large enterprises with turnover at least £1 million, with the figure remaining steady over the years. Less positively, the number of enterprises with a turnover of between £50k and £1m has decreased quite considerably over the last couple of years. This is largely thanks to fewer enterprises in the Professional sector, especially smaller businesses with turnover of between £50-99K.

Approximate Employment Count per Broad Industrial Group, Mearns North and Inverberrie, 2020-22

Broad Industrial Group	2020	2021	2022	2020-22 % Diff.
Agriculture, forestry & fishing	0	0	0	0%
Mining, quarrying & utilities	10	10	15	50%
Manufacturing	175	150	100	-43%
Construction	100	125	100	0%
Motor trades	10	15	20	100%
Wholesale	20	20	20	0%
Retail	150	150	125	-17%
Transport & storage (inc postal)	40	30	25	-38%
Accommodation & food services	125	125	100	-20%
Information & communication	35	25	35	0%
Financial & insurance	0	0	0	0%
Property	0	0	0	0%
Professional, scientific & technical	125	125	150	20%
Business administration & support services	50	75	50	0%
Public administration & defence	20	20	10	-50%
Education	100	100	100	0%
Health	100	100	100	0%
Arts, entertainment, recreation & other services	20	20	25	25%
Total	1,080	1,090	975	-10%

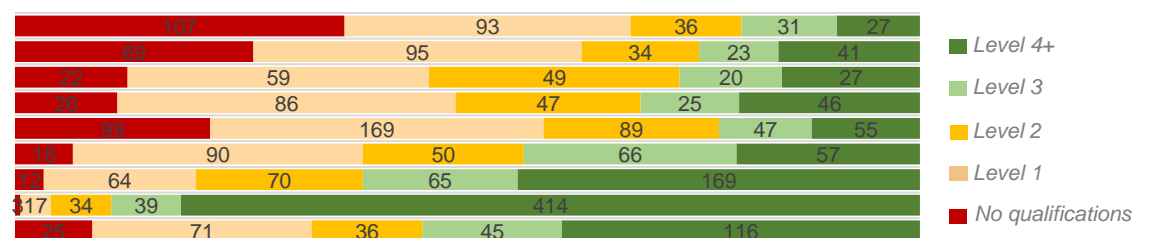
Approximate Number of Enterprises per Turnover Band (£), Mearns North and Inverberrie, 2021-23

Turnover	2021	2022	2023	2021-23 % Diff.
£1m+	10	10	10	0%
£500-999k	20	15	15	-25%
£200-499k	35	25	30	-14%
£100-199k	95	70	55	-42%
£50-99k	55	55	45	-18%
£0-49k	30	45	40	33%

Employees per Occupation Type, Census 2011

Elementary occupations	294
Process, plant and machine operatives	262
Sales and customer service occupations	177
Caring, leisure and other service occupations	230
Skilled trades occupations	459
Administrative and secretarial occupations	281
Associate professional and technical...	380
Professional occupations	507
Managers, directors and senior officials	293

Employees per Qualification & Occupation Type, Census 2011



Mearns North and Inverbervie Housing Data



Relatively sparse / rural

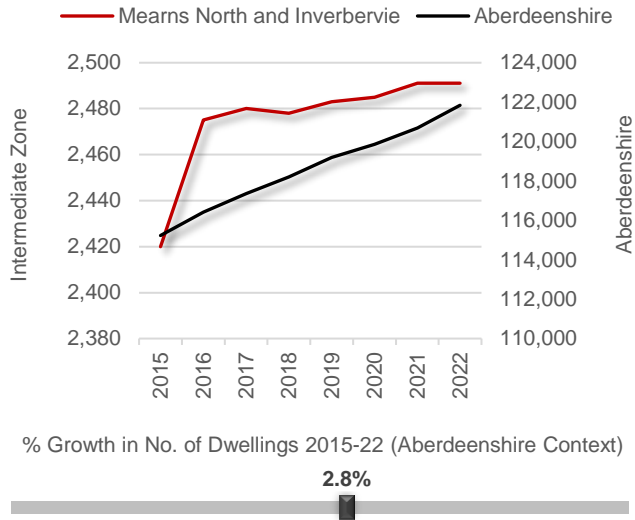
Dwellings per Hectare (2022)

0.16



Relatively dense / urban

Number of Dwellings, 2015-22



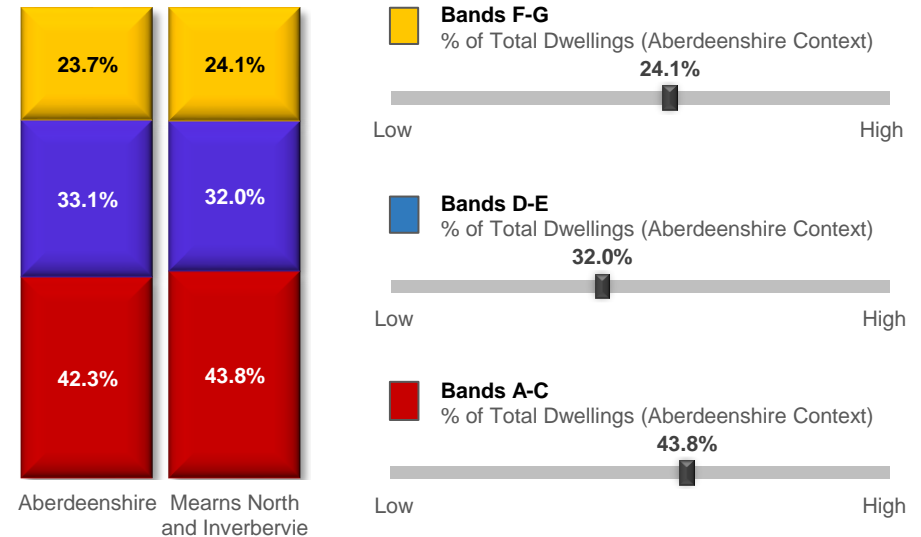
Summary

At 0.16 dwellings per hectare, this IZ is on the more rural side of the spectrum, with fewer properties per hectare relative to other IZs in the Shire. Although it contains the towns of Inverbervie, Gourdon, Fordoun and Auchenblae, the IZ also stretches westward toward Drumtochty Castle and beyond, which tends to be more rural in nature.

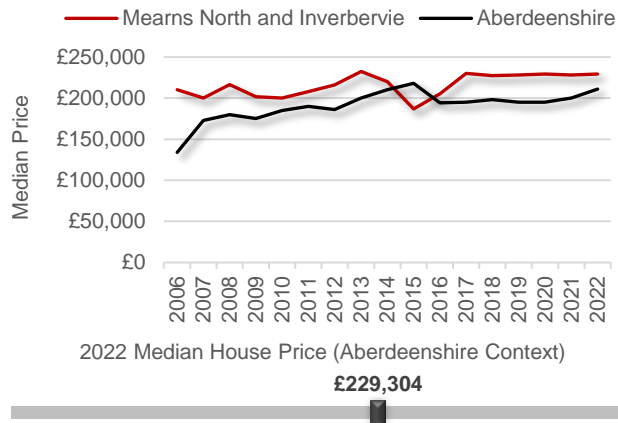
The number of houses in this area has increased by 2.8% since 2015, which is in keeping with most other IZs in Aberdeenshire. The population has virtually remained static over a similar period but that's thanks largely to sizeable reductions in various parts of Inverbervie.

The proportion of dwellings in each of the major Council Tax bands generally match Aberdeenshire rates. Despite this, according to house price sales, the median house price is some way above Aberdeenshire's equivalent - £229,304 in this IZ versus £210,995 for Aberdeenshire as a whole - a difference of £18,309.

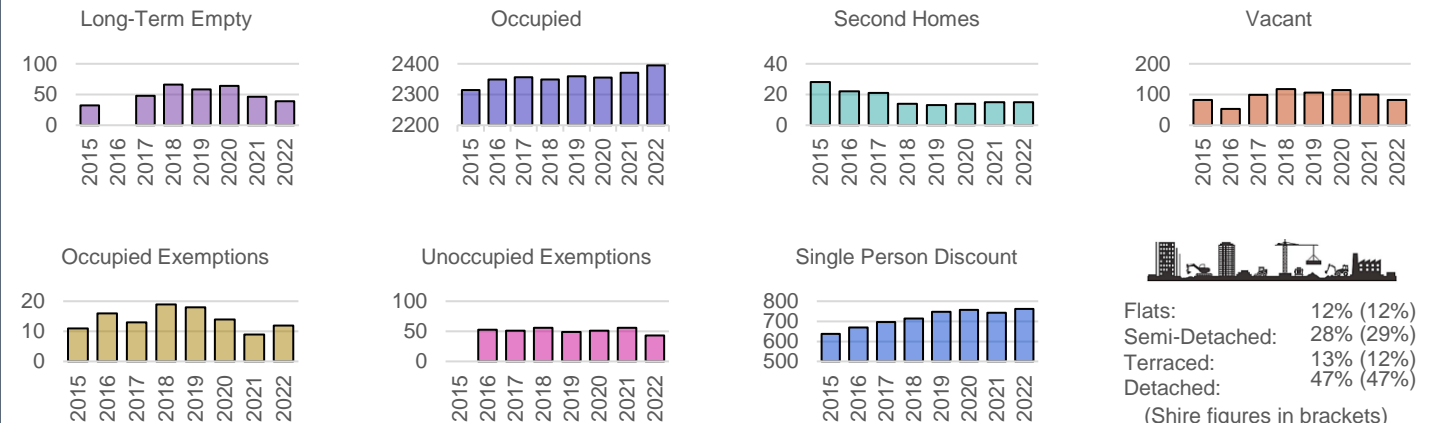
Proportion of Dwellings per Council Tax Band, 2022



Median Residential House Prices (Sales), 2006-22



Housing Types, 2015-22 (Data on Flats, etc., relate to 2017 - the latest year for which data are available)



Mearns North and Inverbervie Other Socio-Economic Data

