

Kintore

Intermediate Zone Statistical Summary

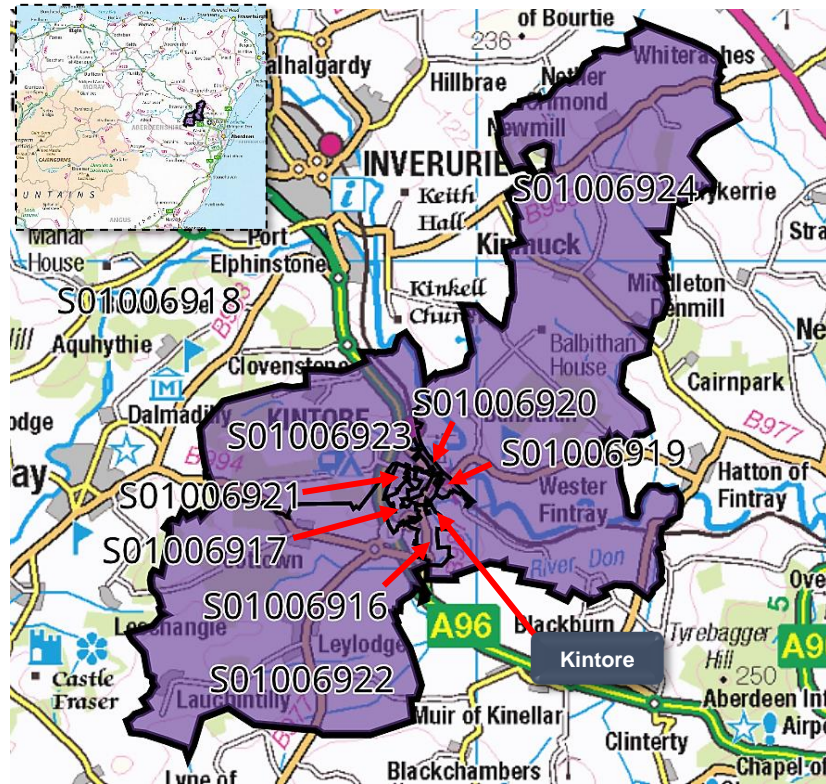
2023



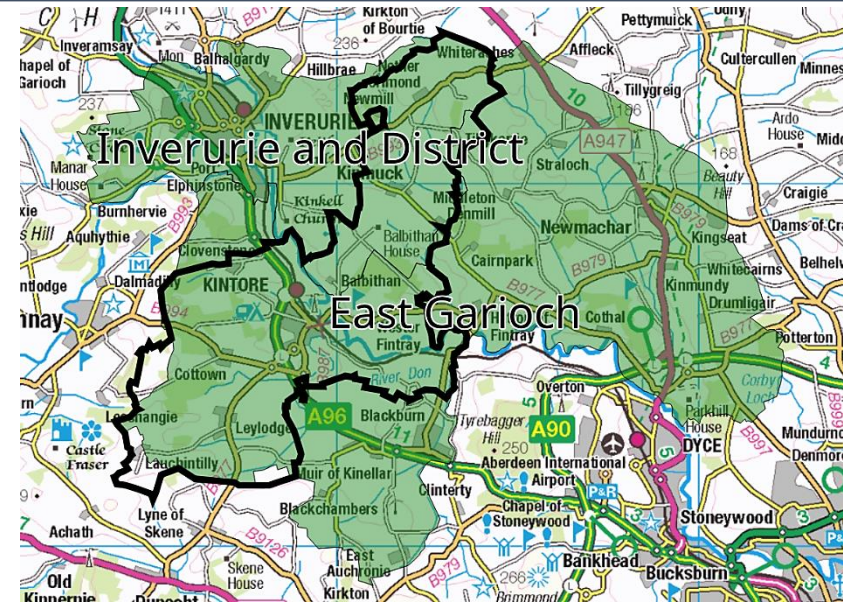
Craig Watson



Data Zones Within the Intermediate Zone



Relevant Multi-Member Wards



Notes on the Maps

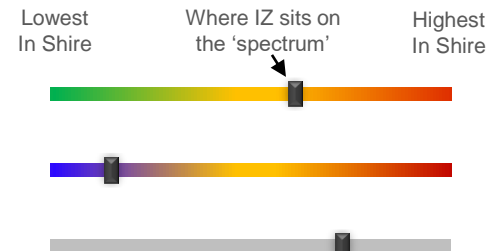
The map on the left shows the location and geographic area of the Kintore Intermediate Zone. It contains 8 Data Zones. Kintore itself comprises 5 Data Zones – S01006916, S01006917, S01006919, S01006920, and S01006921.

Two MMWs straddle the Intermediate Zone (Inverurie and District and East Garioch).

Spectrum Charts Explained

The following statistical pages frequently utilise spectrum charts as a visual aid to accompany an indicator. They are used to place the relevant Intermediate Zone (IZ) in the context of all other IZs in Aberdeenshire with regards to that indicator.

The charts to the right are examples of the spectrum charts used in this report. The black line represents where the IZ sits in the context of the highest and lowest figures in Aberdeenshire. If the black line is situated towards the left-hand side, the IZ recorded one of the lowest figures in Aberdeenshire. Conversely, if the black line is towards the right-hand side, it recorded one of the highest figures in Aberdeenshire.



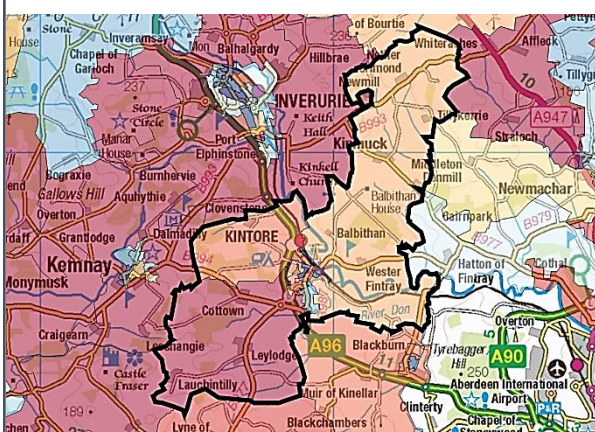
The green/red spectrum charts are the most common type. If the black line is situated towards the red end of the spectrum, it means the figure is objectively worse than most other IZs in Aberdeenshire and vice versa.

The blue/red spectrum charts are used in the demographic section to denote high population growth (red) and population decline (blue).

The grey spectrum charts are simply used to denote high and low in the context of Aberdeenshire, where the high / low figure is neither good nor bad. An example would be the proportion of dwellings that fall within Council Tax Bands F-G.

Kintore Demographic Data

Map of Kintore: Population Change (2014-2021)



Low Growth / Depopulation (Blue) High Growth (Red)

Population Change per Data Zone, 2014 & 2021

Data Zone	2014	2021	% Difference
S01006916	597	554	-7.2%
S01006917	1070	1099	2.7%
S01006918	501	515	2.8%
S01006919	469	423	-9.8%
S01006920	466	417	-10.5%
S01006921	830	818	-1.4%
S01006922	616	726	17.9%
S01006923	783	789	0.8%
S01006924	570	559	-1.9%
Total	5902	5900	0.0%

The population in this IZ remained flat between 2014 and 2021, which is quite an unusual occurrence but means the IZ is towards the higher end of the spectrum in the context of all other IZs in Aberdeenshire.

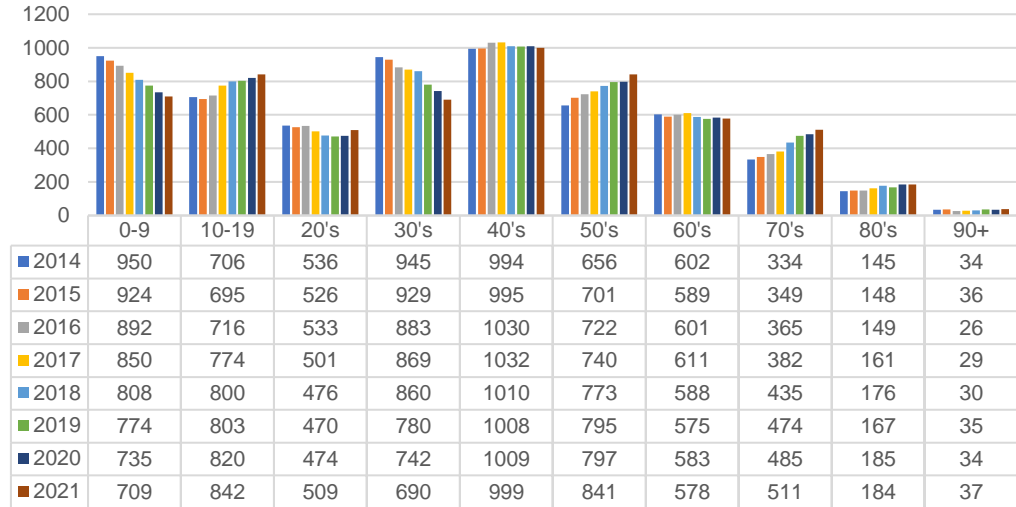
The IZ would have registered a decrease were it not for considerable growth S01006922, which covers a rural area to the west of Kintore itself, stretching approximately 5km from the town's western border - but it also covers the Birch Wood area of Kintore as well as the area around Caenntor Park and Harthills View.

Greatest decreases were seen in the town of Kintore itself, particularly the area to the north and south of Kintore Parish Church near The Square. The area to the north of Kintore School also experienced a relatively sizeable population decline over the last few years, as did the area either side of School Road towards Midmill Business Park.

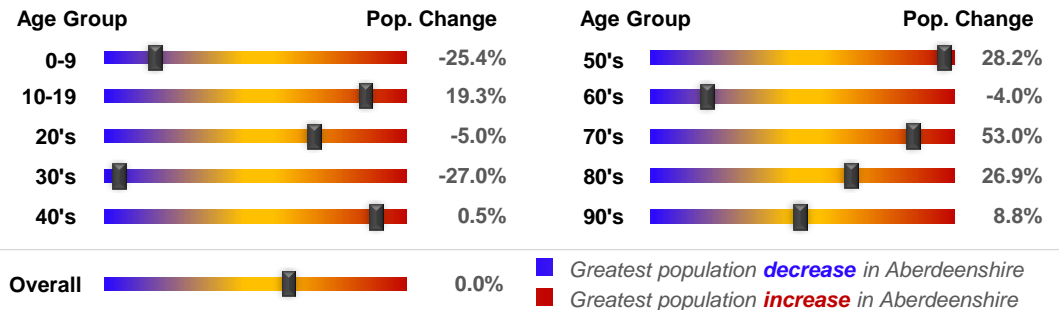
The age profile is towards the younger side of the spectrum in an Aberdeenshire context. The greatest group in this IZ in terms of numbers comprises those in their 40's (in Aberdeenshire it's people in their 50's). And this IZ is one of only a few who have seen 40-somethings grow in number of the past few years. The IZ is also home to a relatively large child population, with approximately 21.6% of residents aged 15 years and under. This is largely thanks to growth in the 10-14-year age bracket. Younger age groups have actually reduced in number over the period covered.

A low proportion of the population (16.7%) is aged 65 and over, but the growth rates of those 70+ are relatively high in the context of Aberdeenshire.

Population per Age Group, Kintore, 2014-2021



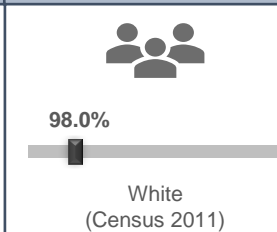
Rate of Population Change per Age Group, 2021 Compared to 2014



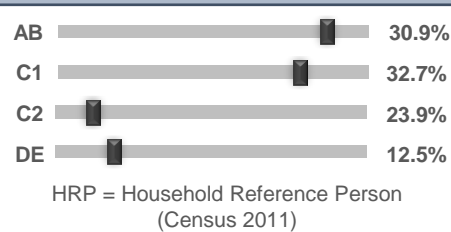
Country of Birth



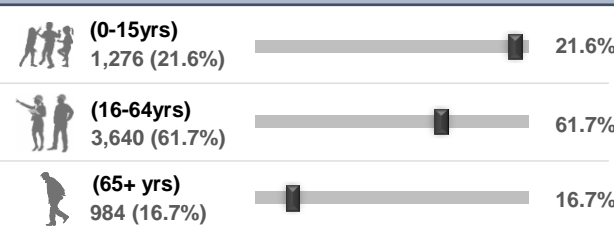
Ethnicity



Approximated Social Grade of HRP



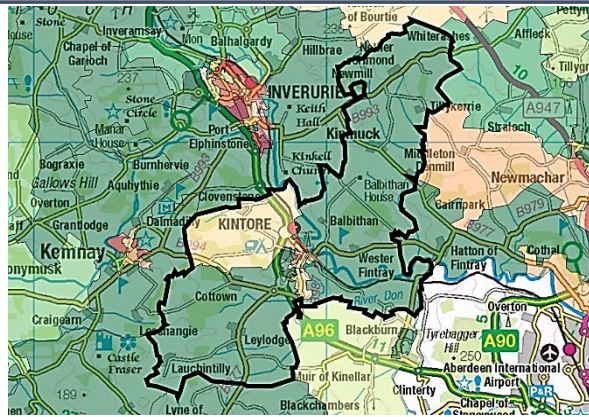
Population per Broad Age Group, 2021



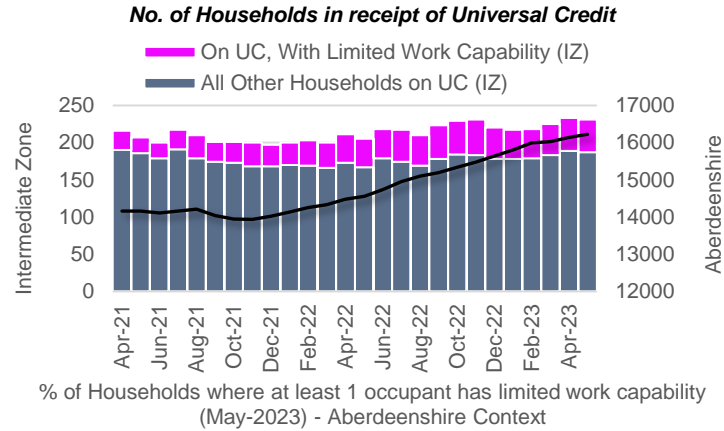
In 2021 5,900 people lived in Kintore -- 1,276 (21.6%) were under 15 years of age, 3,640 (61.7%) were aged 16-64, and 984 (16.7%) were over 65.

The black markers show where these percentages sit in the context of Aberdeenshire: left = low; right = high.

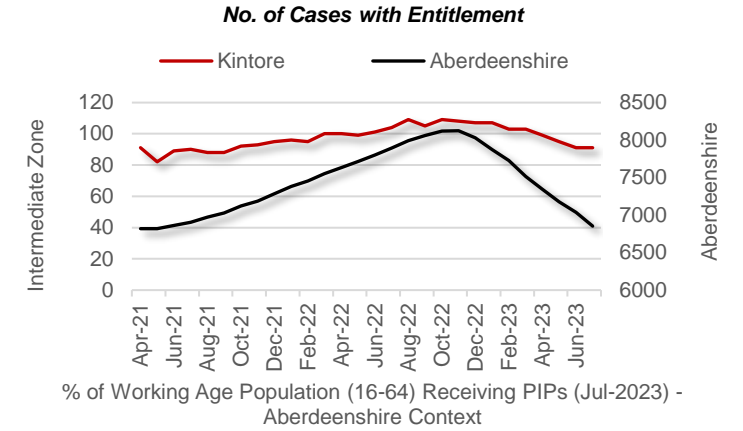
SIMD 2020 Health Domain Rank



Universal Credit (UC) Limited Work Capability Households



Personal Independence Payments



Day-to-Day Activities

Proportion of people whose day-to-day activities are limited a little or a lot - Aberdeenshire Context (Census 2011)



Health Rating

Proportion of people who rated their health as either 'good' or 'very good' - Aberdeenshire Context (Census 2011)



According to monthly health-related benefits data, the number of households on Universal Credit has remained relatively steady over the past couple of years having increased at the start of Covid. The number of households with Limited Work Capability or LWC (due to physical or mental health issues) has likewise increased and remained relatively high since that time, now affecting 44 households versus 7 in January 2020. However, the IZ figure of 1.9% of households with at least 1 occupant assessed as having LWC is relatively low in the context of most other IZs in Aberdeenshire.

A slightly higher proportion of the Working Age Population (2.0%) receive Personal Independence Payments (PIPs). This helps with some of the extra costs caused by long-term disability, ill-health or terminal ill-health. The IZ trend has generally followed the Aberdeenshire trend and has reduced in tandem with the authority area since the peak at the end of 2022. The 2.0% figure is relatively low compared to most other IZs in Aberdeenshire.

According to SIMD 2020 data, DZ S01006917 has the best health ranking (western part of Kintore, from Wyness Place to the area south of Forest Road) and S01006920 has the 'worst'. The latter DZ lies to the east of Kintore Primary School, stretching northwards towards Dinne Place.

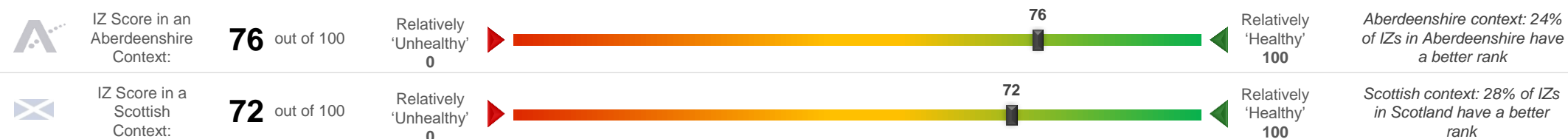
SIMD 2020 Health Domain Indicators per each Data Zone in the Kintore Intermediate Zone (compared to Aberdeenshire average)

SIMD Health Domain Indicator (Data Zones colour-coordinated with map) >>

	S01006916	S01006917	S01006918	S01006919	S01006920	S01006921	S01006922	S01006923	S01006924	Shire
Health Domain Rank (see map for colour-coded rankings) (the higher, the better)	5481	6925	5885	6226	4263	6905	6832	5416	6848	5,254
Comparative Illness Factor (Scotland = 100) (the lower, the better)	60	25	40	35	70	20	25	50	25	58
Emergency stays in hospital (Scotland = 100) (the lower, the better)	65.0	48.8	65.0	82.4	101.2	52.6	60.5	68.9	59.1	71.5
Hospital stays related to alcohol misuse (Scotland = 100) (the lower, the better)	36.2	4.2	77.7	0.0	41.9	15.5	6.0	12.9	0.0	45.4
Hospital stays related to drug misuse (Scotland = 100) (the lower, the better)	42.2	0.0	0.0	35.6	0.0	0.0	0.0	68.0	0.0	30
Proportion of live singleton births of lowbirth weight (the lower, the better)	4.5%	4.3%	5.9%	0.0%	7.1%	3.2%	3.7%	0.0%	0.0%	4.0%
Proportion of population being prescribed drugs for anxiety, depression or psychosis	12.9%	9.3%	13.3%	16.3%	16.0%	11.7%	10.4%	16.1%	11.6%	15.6%
Standardised Mortality Ratio (Scotland = 100) (the lower, the better)	55	27	130	62	105	40	54	108	61	85

Kintore Health Data (2 of 2)

Kintore's position on the 'Health Spectrum' – Aberdeenshire and Scottish Context (the higher the score, the better)



Selection of ScotPHO indicators, Kintore IZ compared to Aberdeenshire & Scotland (latest data)

Indicator	Latest Available Figures				IZ Trend	Indicator Measurement
	IZ	IZ's latest figure compared to:				
		Aberdeenshire	Scotland			
Alcohol-related hospital stays	282.0	6.1%		-53.9%	Up	Rate per 100,000 pop.
All-cause mortality among the 15-44 year olds	63.3	-32.9%		-46.0%	Down	Rate per 100,000 pop.
Babies exclusively breastfed at 6-8 weeks	53.5	13.0%		21.7%	Up	% of babies with a valid feeding status
Bowel screening uptake	77.0	4.0%		11.4%	Up	% of eligible people (aged 50-74)
Child dental health in primary 1	86.3	7.5%		13.2%	Down	% of P1 pupils
Child dental health in primary 7	91.9	12.1%		16.9%	Down	% of P7 pupils
Child healthy weight in primary 1	76.1	-1.2%		6.4%	Down	% of P1 pupils
Deaths all ages	836.5	-21.0%		-29.1%	Up	Rate per 100,000 pop.
Developmental concerns at 27-30 months	2.7	-0.2%		-11.9%	Down	% of children reviewed
Early deaths from cancer (<75)	100.8	-23.5%		-32.6%	Down	Rate per 100,000 pop.
Early deaths from coronary heart disease (<75)	23.7	-37.2%		-54.9%	Down	Rate per 100,000 pop.
Female life expectancy	84.5	3.3%		4.7%	Up	Life expectancy at birth in years
Healthy birth weight	77.1	-5.9%		-7.0%	Down	% of all singleton births
Immunisation uptake at 24 months - 6 in 1	96.6	-1.2%		-0.4%	Up	% of children in relevant age group
Immunisation uptake at 24 months - MMR	94.9	0.1%		0.5%	Down	% of children in relevant age group
Male life expectancy	82.5	6.3%		7.8%	Up	Life expectancy at birth in years
Maternal obesity	17.0	-7.5%		-9.1%	Up	% of women at antenatal booking
Patients (65+) with multiple A&E hospitalisations	6816.0	8.3%		-0.1%	Down	Rate per 100,000 pop.
Patients hospitalised with asthma	39.1	22.3%		-42.9%	Down	Rate per 100,000 pop.
Patients hospitalised with COPD	121.2	3.5%		-41.6%	Down	Rate per 100,000 pop.
Patients hospitalised with coronary heart disease	302.0	2.7%		-11.6%	Down	Rate per 100,000 pop.
Patients with emergency hospitalisations	4839.9	-8.3%		-33.1%	Down	Rate per 100,000 pop.
Premature births	12.5	3.2%		4.3%	Up	% of all live births
Uptake of the HPV vaccine in S3 girls	94.2	4.8%		9.3%	Down	% of S3 girls

Based on the 24 health-related indicators in the table, this IZ has one of the better health profiles in Aberdeenshire and in Scotland, albeit the rankings deteriorated slightly relative to the previous reporting cycle.

The area compares favourably to most other areas in Scotland in terms of a range of health-related outcomes, particularly in relation to Bowel screening uptake; Patients with emergency hospitalisations; Developmental concerns at 27-30 months; Male life expectancy; Deaths all ages; Child dental health in primary 7; and Uptake of the HPV vaccine in S3 girls. In each instance the IZ is in the top 10% in Scotland.

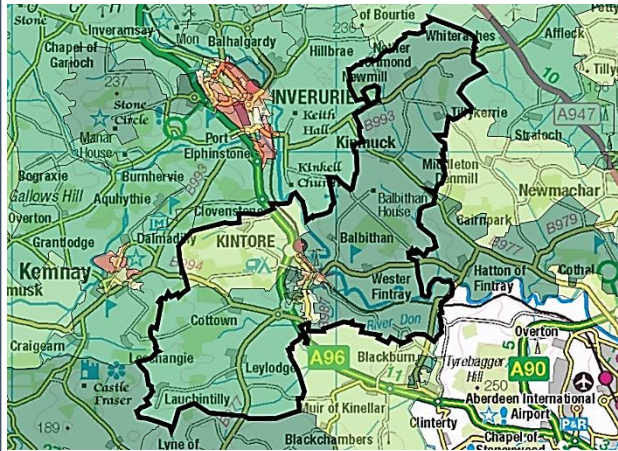
Issues that may require further investigation include:

- Immunisation uptake at 24 months - MMR;
- Immunisation uptake at 24 months - 5 in 1;
- Patients hospitalised with asthma;
- Premature births; and
- Healthy birth weight;

With regards to each of the indicators listed above the IZ compares less favourably to other areas in Aberdeenshire and, in some instances, Scotland (and/or the trend is worsening).

Kintore Economic Data (1 of 3)

Rank of Household Income per Data Zone (2023)



Key: Relatively low (red to yellow) to Relatively high (green to blue)

In terms of household income, this IZ is towards the more affluent end of the Aberdeenshire spectrum. The median household income in 2023 equated to £53,223, which is £11,467 higher than the Shire average (£41,756).

Median household income ranges from £38,748 in DZ S01006920 (which is to the east of Kintore Primary School, stretching northwards towards Dinne Place) to £66,385 in DZ S01006917 (western part of Kintore).

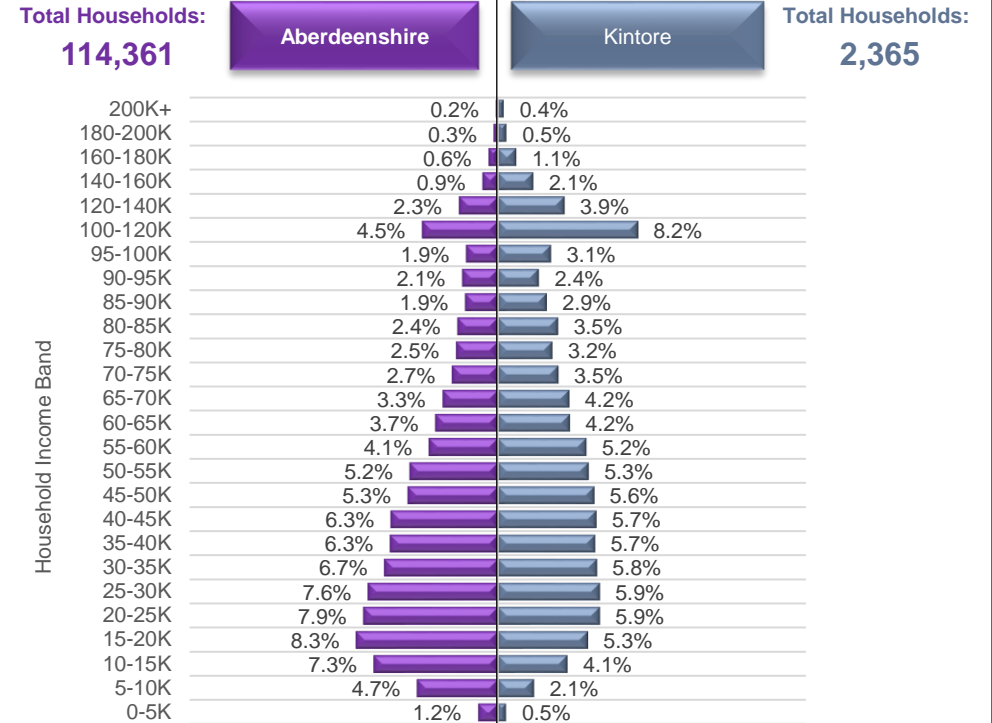
Approximately 2.6% of households in this IZ earn less than £10,000 per year, which is lower-than-average (5.3%). This equates to roughly 61 households, fewer than last year. The area north and west of The Square tends to contain a higher-than-average proportion of such households.

High income households tend to be situated either side of Gauchhill Road in the southwest of Kintore and in the Castle Park Grove/Drive area in the western portion of the town.

Household Income per Data Zone (2023)

Data Zone	Households	Average Income	Median Income	Lower Quartile Income
S01006916	214	£ 56,577	£ 46,429	£ 25,532
S01006917	370	£ 72,918	£ 66,385	£ 41,729
S01006918	216	£ 59,872	£ 52,759	£ 32,233
S01006919	191	£ 53,490	£ 46,111	£ 27,761
S01006920	214	£ 46,722	£ 38,748	£ 22,129
S01006921	280	£ 68,454	£ 61,407	£ 38,393
S01006922	306	£ 61,577	£ 53,743	£ 32,349
S01006923	351	£ 56,821	£ 48,383	£ 26,599
S01006924	223	£ 65,452	£ 57,622	£ 34,863

Household Income per Band, Kintore & Aberdeenshire (2023)



© CACI Limited 1996 - 2022 This report shall be used solely for academic, personal and/or non-commercial purposes. The applicable copyright notices can be found at <https://www.caci.co.uk/copyrightnotices.pdf>

Median Household Income (2023)



£53,223

Aberdeenshire: £41,756

£53,223



% of Households Earning Less Than £10k (2023)



<£10K

2.6%

Aberdeenshire: 5.3%

2.6%



% of Households Earning More Than £100k (2023)



>£100K

16.0%

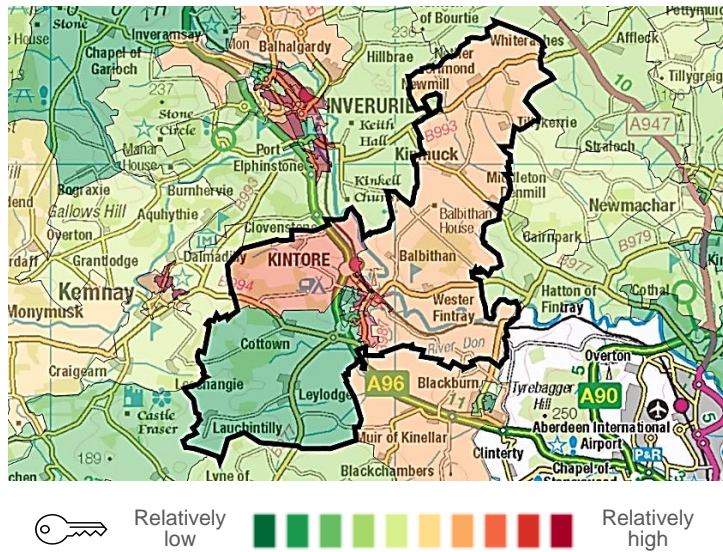
Aberdeenshire: 10.1%

16.0%

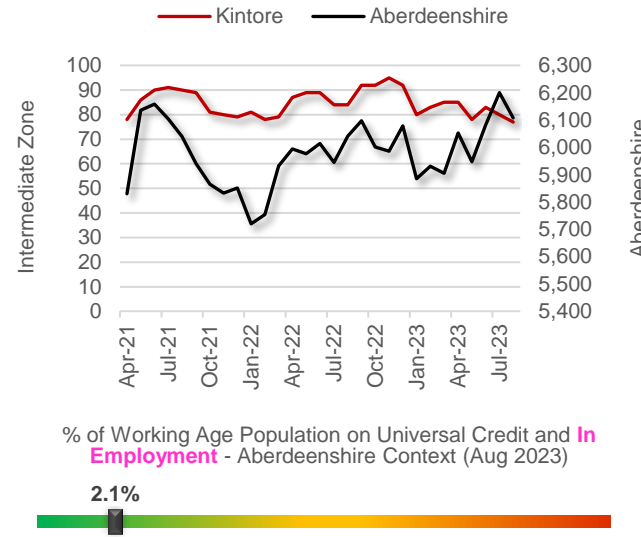


Kintore Economic Data (2 of 3)

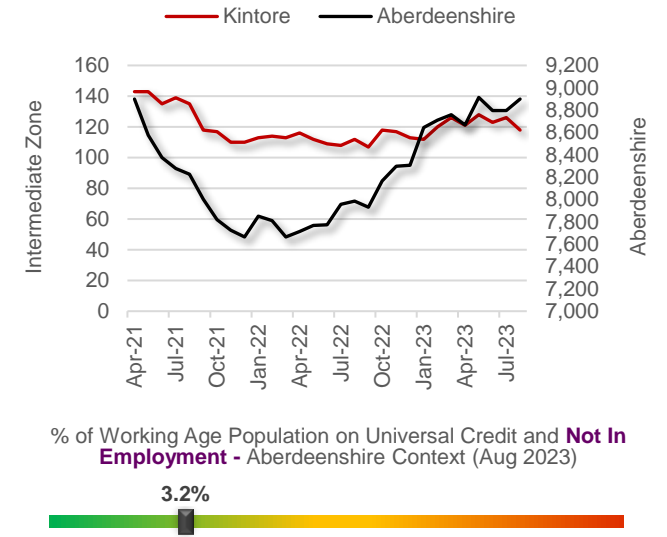
Latest Unemployment Rate - Ranking per Data Zone



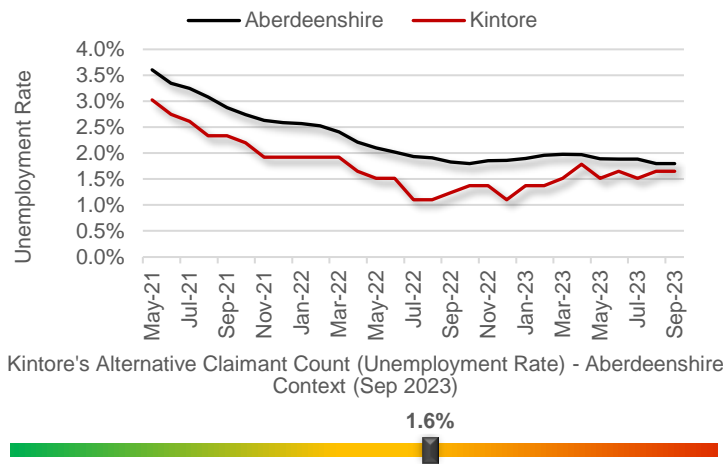
People on Universal Credit - In Employment



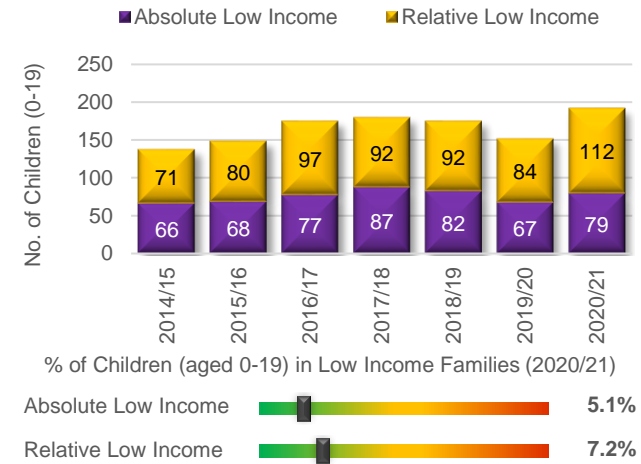
People on Universal Credit - Not In Employment



Alternative Claimant Count - Effective 'Unemployment Rate'



Children in Low Income Families



Summary

The number of people claiming Universal Credit (UC) - who are also in employment - increased on the back of Covid but has decreased over the last few months. Latest figures show 2.1% of people aged 16-64 (who also have jobs) are claiming UC. This is towards the lower end of the spectrum in an Aberdeenshire context and less than last year. A similar story emerges in relation to people on UC and not in employment (3.2%, which is relatively low).

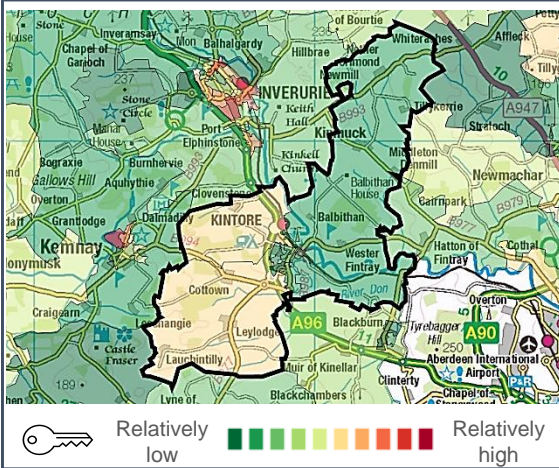
Like Aberdeenshire, the unemployment rate in the IZ has fallen substantially since the February 2021 peak of 3.5%. At no point did the IZ rate exceed the Aberdeenshire rate. Latest data suggests approximately 1.6% of the Working Age population is currently out-of-work, which is lower than the Aberdeenshire-wide rate (1.8%) but slightly higher than last year. The IZ rate ranges from 0.0% (S01006922, rural area to the southwest of Kintore) to 4.3% (S01006920, east of Kintore Primary School, stretching northwards towards Dinne Place).

The proportion of children living in low-income households is one of the lowest rates in Aberdeenshire. However, numbers increased over the latest year for which data are available, after a brief dip the previous year.

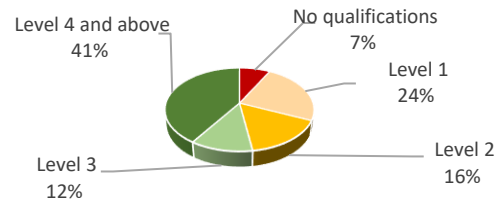
Economic Indicators

Kintore Economic Data (3 of 3)

People With No Qualifications, Census 2011



% of Employees per Qualification Type



Summary

The employment numbers per broad industrial group relate to the kind of jobs within the area, which may be filled by those living outwith the IZ.

Employment in this IZ is generally spread out among a few sectors. Major industries in terms of jobs in the area include the Professional, Scientific and Technical sector, as well as Manufacturing, and Construction, although the latter has seen numbers decrease over the past couple of years. This has meant jobs in Business admin. have now surpassed those in Construction.

Common job types in the area relate to Manufacture of other special-purpose machinery; Architectural and engineering activities; Treatment and coating of metals; and Renting and leasing of other machinery. These specific job types account for approximately 40% of the jobs in the area.

The area is home to a few large enterprises with turnover of at least £500,000, and that number has increased. The largest of which tend to be in Manufacturing and Construction. The Agriculture industry and enterprises in Business admin. have added to this number over the course of 2023, which is a positive for the area.

Approximate Employment Count per Broad Industrial Group, Kintore, 2020-22

Broad Industrial Group	2020	2021	2022	2020-22 % Diff.
Agriculture, forestry & fishing	10	20	20	100%
Mining, quarrying & utilities	30	30	30	0%
Manufacturing	500	700	700	40%
Construction	250	350	200	-20%
Motor trades	50	75	50	0%
Wholesale	20	35	30	50%
Retail	150	150	125	-17%
Transport & storage (inc postal)	225	200	225	0%
Accommodation & food services	50	45	45	-10%
Information & communication	10	5	10	0%
Financial & insurance	0	0	0	0%
Property	35	25	15	-57%
Professional, scientific & technical	450	450	400	-11%
Business administration & support services	225	225	250	11%
Public administration & defence	0	50	0	0%
Education	150	150	150	0%
Health	100	100	75	-25%
Arts, entertainment, recreation & other services	40	45	50	25%
Total	2,295	2,655	2,375	3%

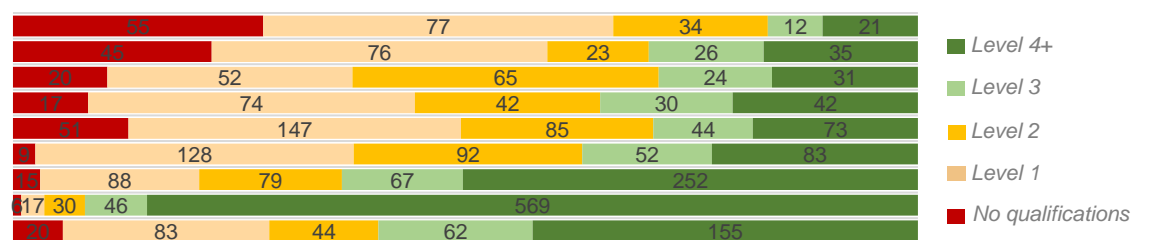
Approximate Number of Enterprises per Turnover Band (£), Kintore, 2021-23

Turnover	2021	2022	2023	2021-23 % Diff.
£1m+	10	10	25	150%
£500-999k	15	20	15	0%
£200-499k	40	20	30	-25%
£100-199k	100	80	75	-25%
£50-99k	55	70	50	-9%
£0-49k	35	35	50	43%

Employees per Occupation Type, Census 2011

Elementary occupations	199
Process, plant and machine operatives	205
Sales and customer service occupations	192
Caring, leisure and other service occupations	205
Skilled trades occupations	400
Administrative and secretarial occupations	364
Associate professional and technical...	501
Professional occupations	668
Managers, directors and senior officials	364

Employees per Qualification & Occupation Type, Census 2011



Kintore Housing Data



Relatively sparse / rural

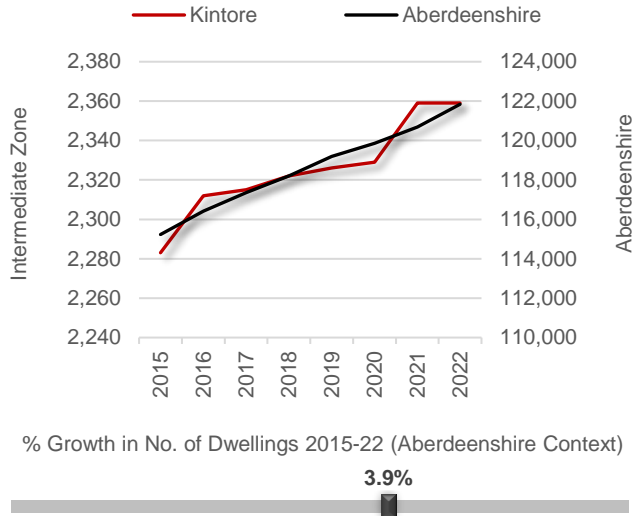
Dwellings per Hectare (2022)

0.41



Relatively dense / urban

Number of Dwellings, 2015-22



Summary

At 0.41 dwellings per hectare, this IZ is on the more rural side of the spectrum, a figure that would have been a lot smaller had the area not included the town of Kintore itself.

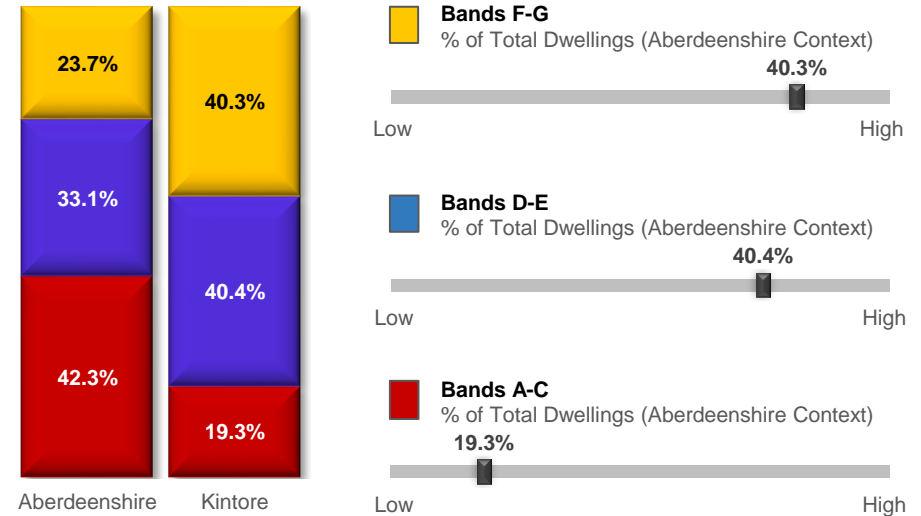
The number of dwellings in the area increased by 3.9% since 2015, which is not markedly different to most other IZs in Aberdeenshire. The growth in dwellings appears to have outpaced the growth in the area's population over a similar timeframe.

A relatively large proportion of the dwellings in this IZ (40.3%) fall within Council Tax Bands F-G. A similar proportion fall within Bands D-E. In both instances, the proportions are among the highest in Aberdeenshire. Consequently, relatively few properties fall within Bands A-C. Indeed, the 19.3% figure is among the lowest in the authority area.

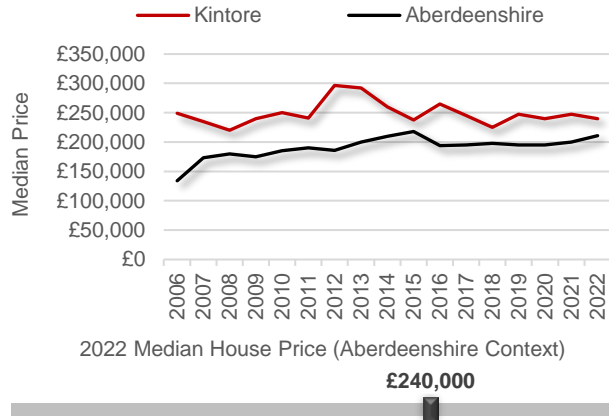
The median house price in the IZ is £240,000, which is approximately £29,00 higher than the Aberdeenshire average (£210,995).

Single Person Discounts appear to have continued to increase.

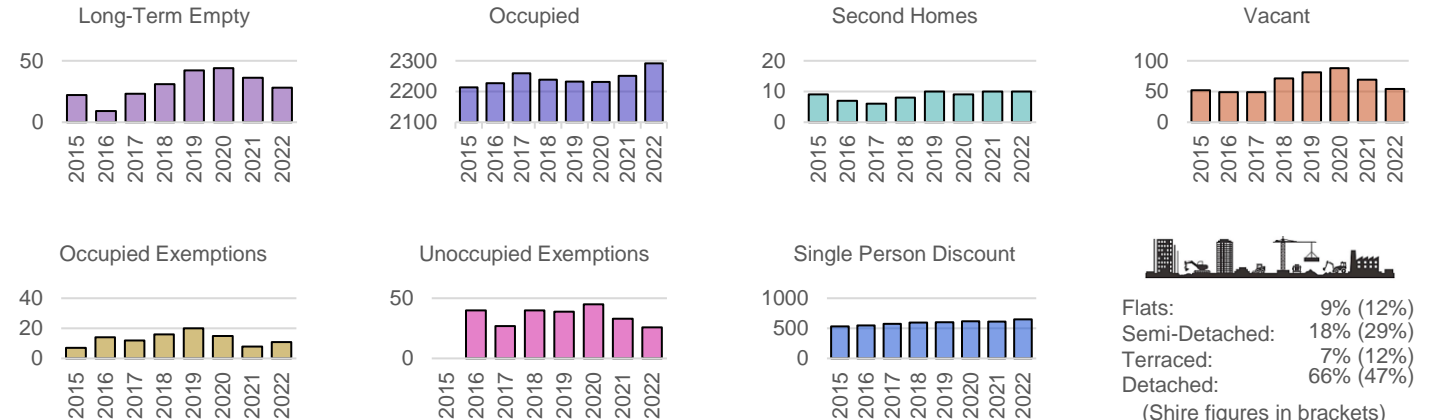
Proportion of Dwellings per Council Tax Band, 2022



Median Residential House Prices (Sales), 2006-22

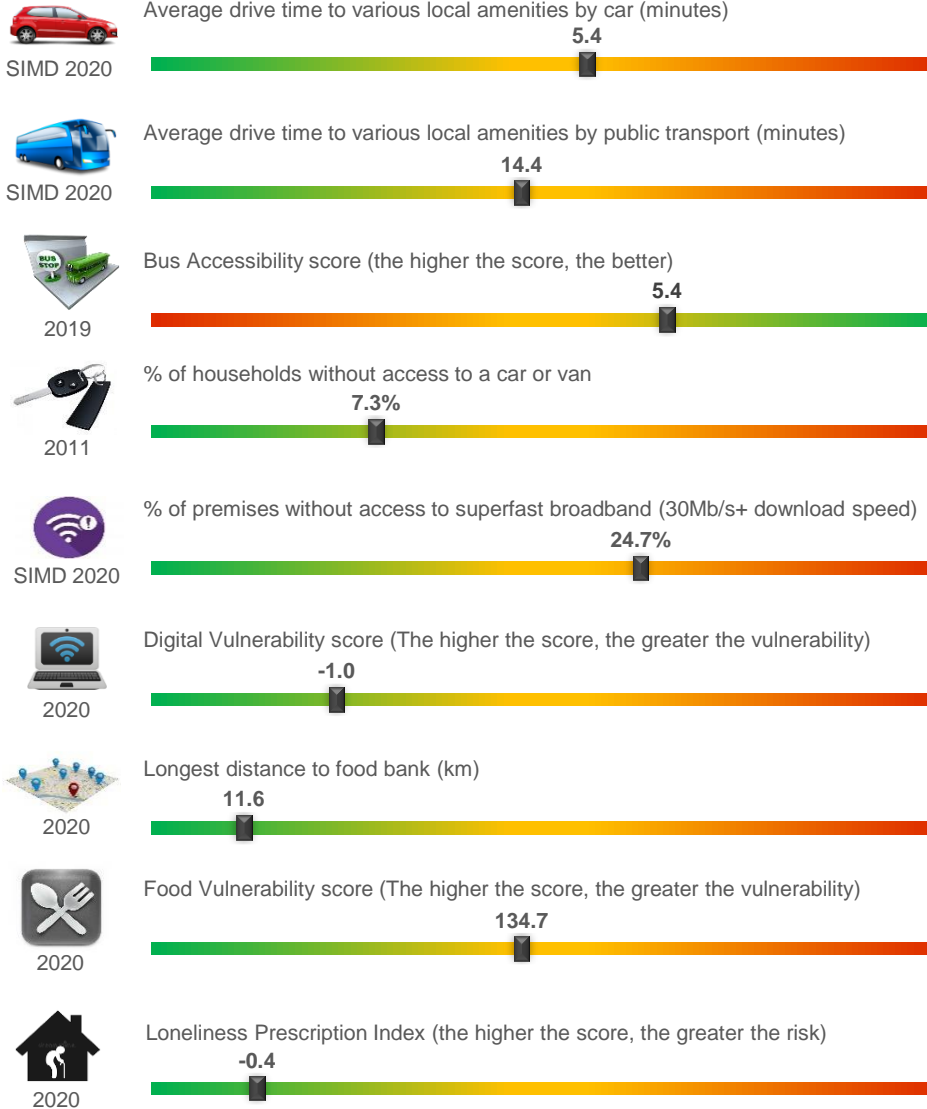


Housing Types, 2015-22 (Data on Flats, etc., relate to 2017 - the latest year for which data are available)

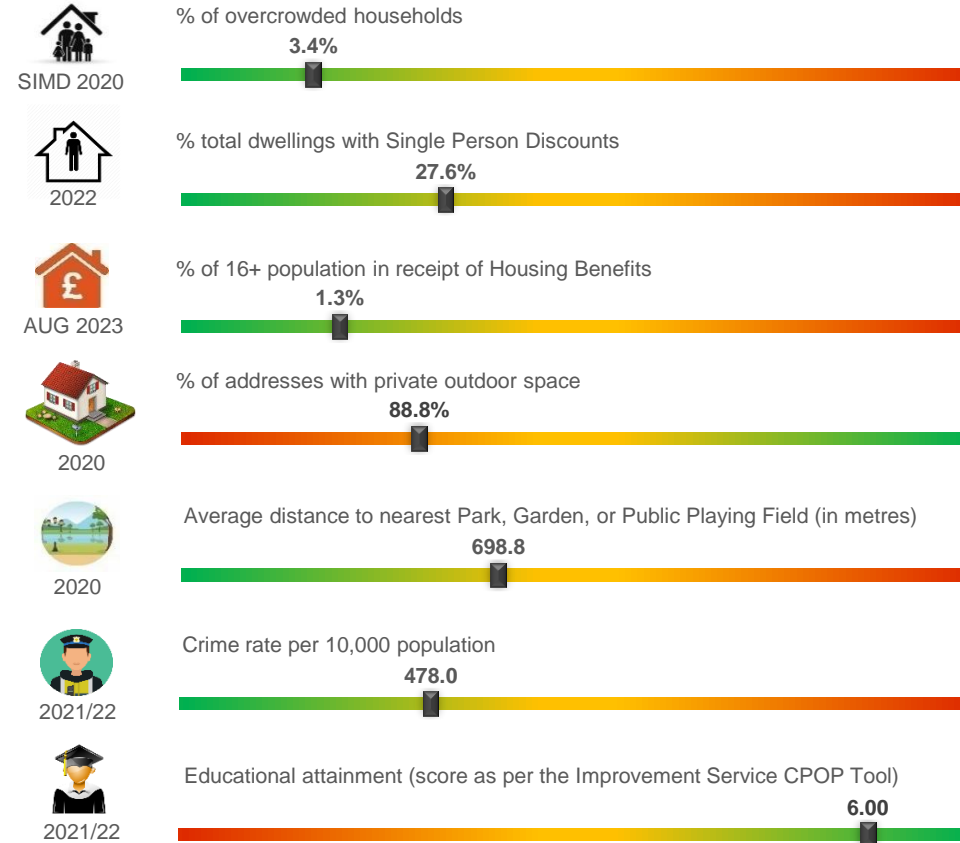


Kintore Other Socio-Economic Data

Geographic Access / Digital Connectivity / Food Vulnerability / Loneliness Proxy



Housing / Environment / Crime Rate / Educational Attainment



Summary

The miscellaneous socio-economic indicators on this page suggests residents are generally well served, and educational attainment in the general IZ area is among the best in Aberdeenshire.

Perhaps the standout issue is similar to that experienced in the more rural parts of Aberdeenshire, namely the proportion of premises that can access superfast broadband, which is arguably sub-optimal in this IZ. Approximately 24.7% of premises cannot access it. The worst affected areas are found in the northern portion of the IZ, around Kinmuck and the surrounding areas. Premises around Clovenstone may also experience patchy access, as may those living in the rural southwest of the IZ, from Uppermill near Kintore to Lauchentilly towards the Castle Fraser area.