

Clashindarroch

Intermediate Zone Statistical Summary

2023

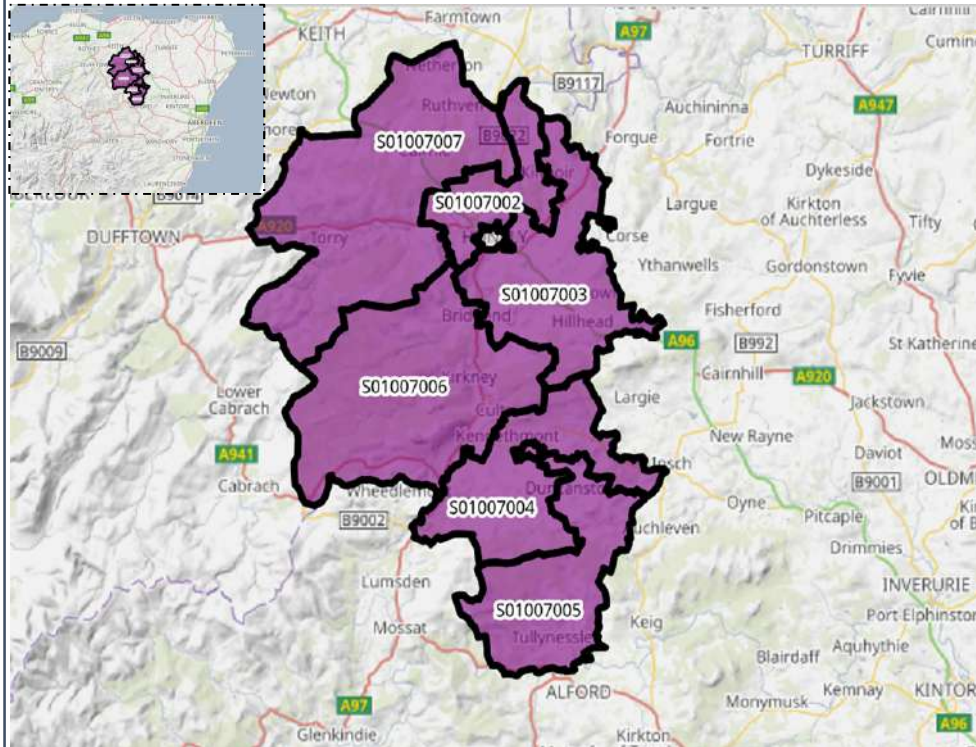


Daniel Stanford

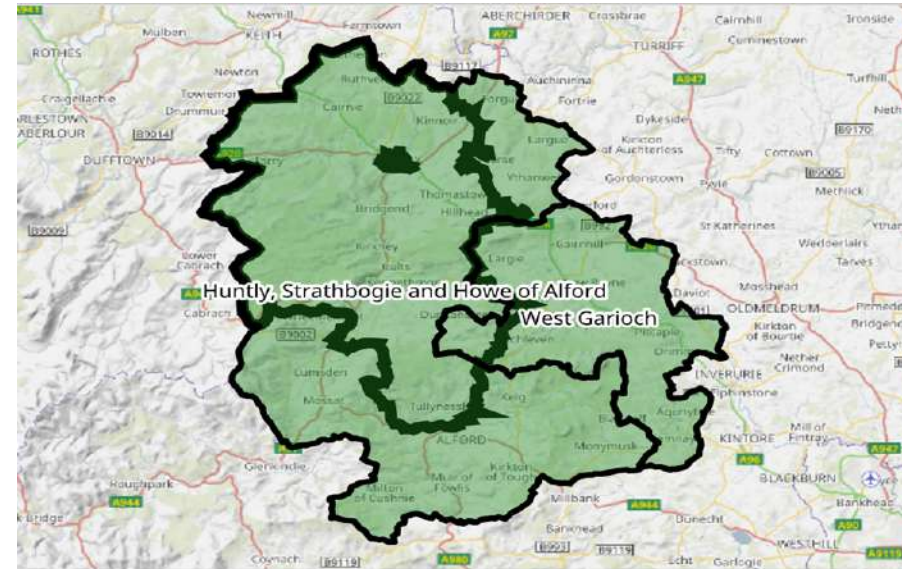


Clashindarroch

Data Zones Within the Intermediate Zone



Relevant Multi-Member Wards



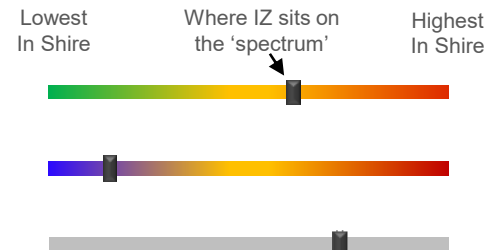
Notes on the Maps

The map on the left shows the location and geographic area of the Clashindarroch Intermediate Zone which contains six Data Zones. The intermediate lies mainly in Ward 14, Huntly, Strathbogie and Howe of Alford, and to a much lesser extent, Ward 10, Garioch.

Spectrum Charts Explained

The following statistical pages frequently utilise spectrum charts as a visual aid to accompany an indicator. They are used to place the relevant Intermediate Zone (IZ) in the context of all other IZs in Aberdeenshire with regards to that indicator.

The charts to the right are examples of the spectrum charts used in this report. The black line represents where the IZ sits in the context of the highest and lowest figures in Aberdeenshire. If the black line is situated towards the left-hand side, the IZ recorded one of the lowest figures in Aberdeenshire. Conversely, if the black line is towards the right-hand side, it recorded one of the highest figures in Aberdeenshire.



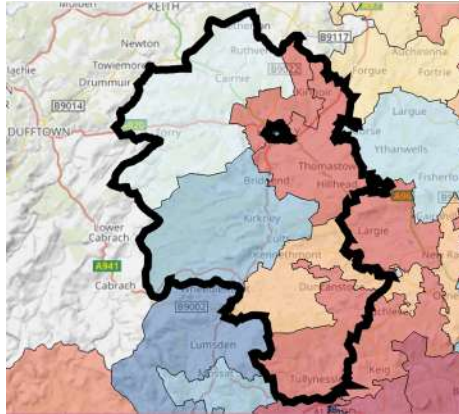
The green/red spectrum charts are the most common type. If the black line is situated towards the red end of the spectrum, it means the figure is objectively worse than most other IZs in Aberdeenshire and *vice versa*.

The blue/red spectrum charts are used in the demographic section to denote high population growth (red) and population decline (blue).

The grey spectrum charts are simply used to denote high and low in the context of Aberdeenshire, where the high / low figure is neither good nor bad. An example would be the proportion of dwellings that fall within Council Tax Bands F-G.

Clashindarroch Demographic Data

Map of Clashindarroch: Population Change (2014-2021)



Low Growth / Depopulation High Growth

The population of the Clashindarroch IZ increased by 0.7% between 2014 and 2021. This is mainly down to the population spikes in DZ S01007005 where there was an increase of 54 (6.1%) and DZ S01007003 where there was an increase of 30 (5.7%).

Compared to 2014 Clashindarroch has seen significant increases in the older age groups especially with the 50+ age range with a 49.7% increase with 70–79-year-olds.

At 61.6%, the proportion of Working Age people in the IZ is just above the average when looking at the spectrum in an Aberdeenshire context.

At 17.0%, there is a lower proportion of children in the IZ is than in most other areas across Aberdeenshire.

At 21.4% the number of older residents in the IZ is around the average compared to most other areas of Aberdeenshire even with the spikes in population change among the 70+ age range.

In the three DZ's that have seen population decreases this is mostly down to a drop in the older age groups..

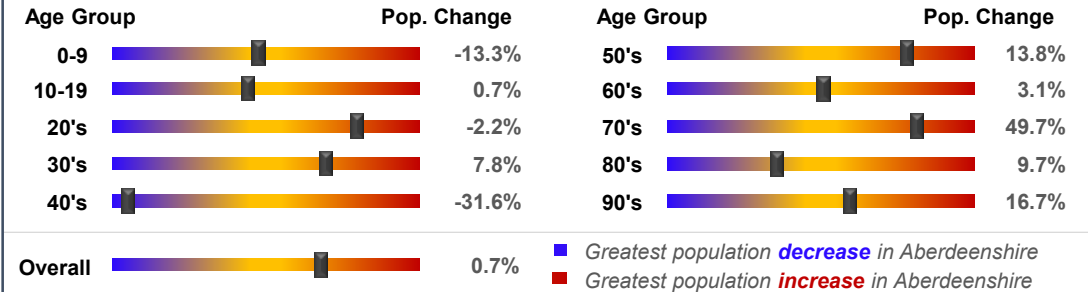
Population Change per Data Zone, 2014 & 2021

Data Zone	2014	2021	% Difference
S01007002	703	742	5.5%
S01007003	528	558	5.7%
S01007004	762	756	-0.8%
S01007005	888	942	6.1%
S01007006	883	826	-6.5%
S01007007	804	775	-3.6%
Total	4568	4599	0.7%

Population per Age Group, Clashindarroch, 2014-2021



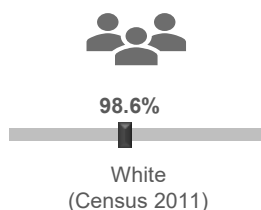
Rate of Population Change per Age Group, 2021 Compared to 2014



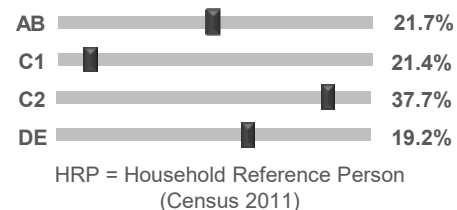
Country of Birth



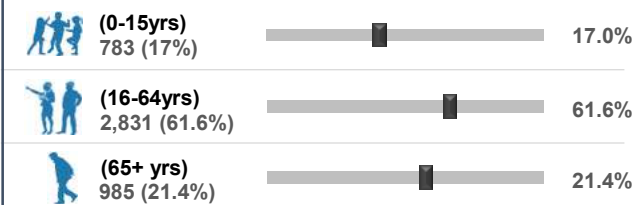
Ethnicity



Approximated Social Grade of HRP

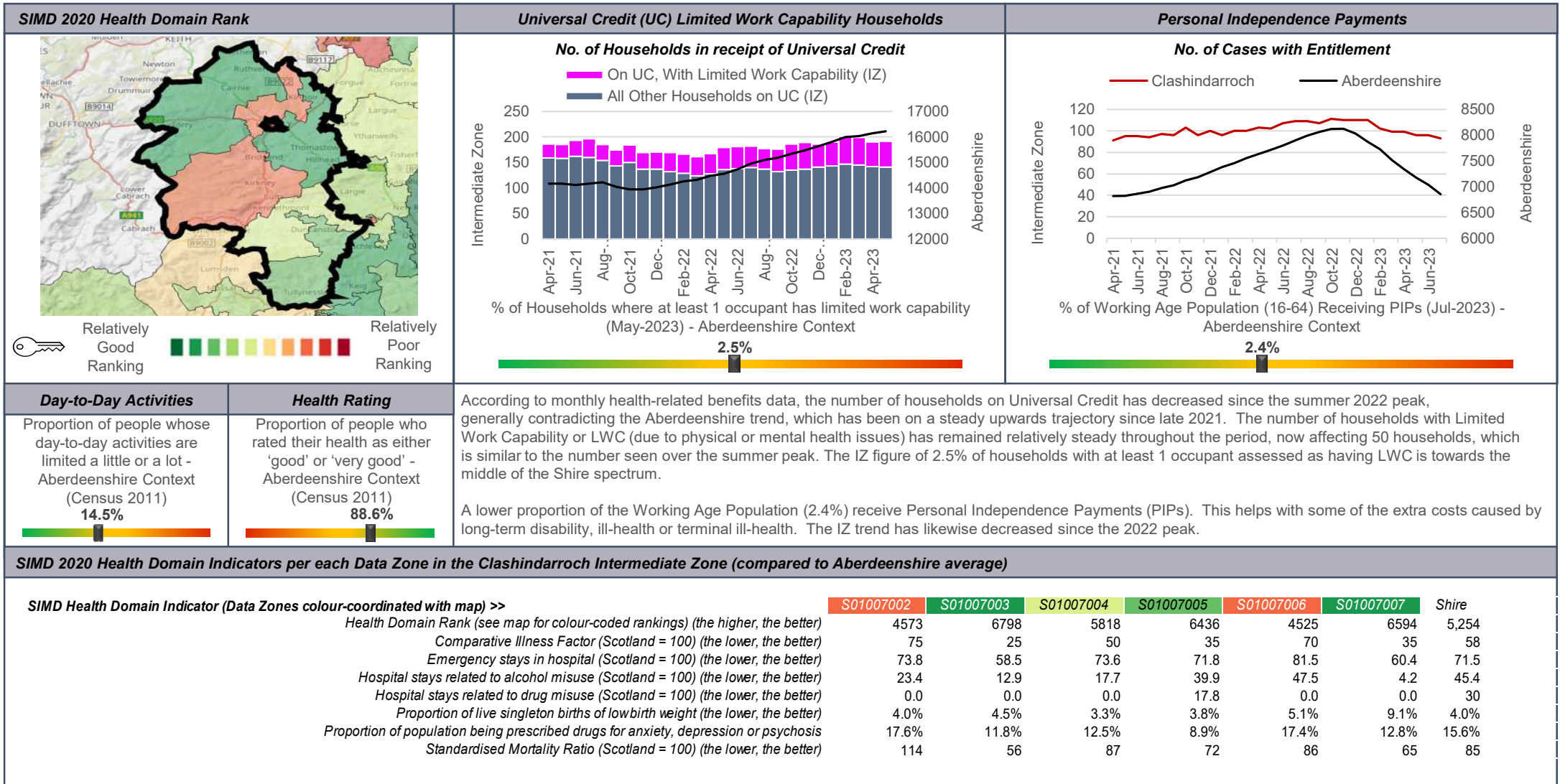


Population per Broad Age Group, 2021



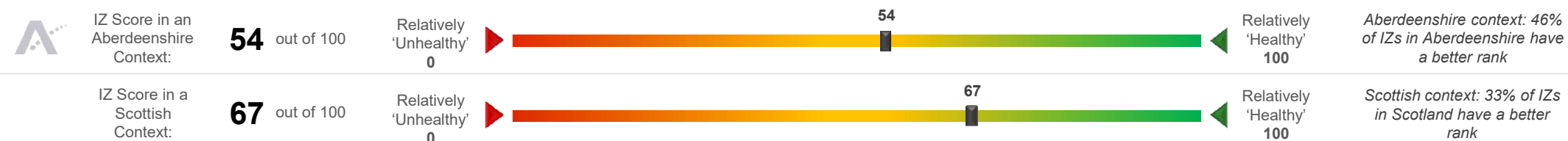
In 2021 4,599 people lived in Clashindarroch -- 783 (17%) were under 15 years of age, 2,831 (61.6%) were aged 16-64, and 985 (21.4%) were over 65.

The black markers show where these percentages sit in the context of Aberdeenshire: left = low; right = high.



Clashindarroch Health Data (2 of 2)

Clashindarroch's position on the 'Health Spectrum' – Aberdeenshire and Scottish Context (the higher the score, the better)



Selection of ScotPHO indicators, Clashindarroch IZ compared to Aberdeenshire & Scotland (latest data)

Indicator	Latest Available Figures				IZ Trend	Indicator Measurement
	IZ	IZ's latest figure compared to:				
		Aberdeenshire	Scotland			
Alcohol-related hospital stays	246.2	-7.4%		-59.7%	Down	Rate per 100,000 pop.
All-cause mortality among the 15-44 year olds	100.1	6.1%		-14.5%	Down	Rate per 100,000 pop.
Babies exclusively breastfed at 6-8 weeks	42.4	1.9%		10.6%	Down	% of babies with a valid feeding status
Bowel screening uptake	71.8	-1.2%		6.2%	Up	% of eligible people (aged 50-74)
Child dental health in primary 1	83.8	5.0%		10.7%	Up	% of P1 pupils
Child dental health in primary 7	83.8	4.1%		8.8%	Up	% of P7 pupils
Child healthy weight in primary 1	80.0	2.6%		10.2%	Up	% of P1 pupils
Deaths all ages	1231.0	16.3%		4.3%	Up	Rate per 100,000 pop.
Developmental concerns at 27-30 months	0.8	-2.1%		-13.8%	Down	% of children reviewed
Early deaths from cancer (<75)	198.8	50.9%		32.9%	Up	Rate per 100,000 pop.
Early deaths from coronary heart disease (<75)	37.2	-1.6%		-29.3%	Down	Rate per 100,000 pop.
Female life expectancy	82.2	0.5%		1.9%	Down	Life expectancy at birth in years
Healthy birth weight	86.1	3.1%		2.0%	Down	% of all singleton births
Immunisation uptake at 24 months - 6 in 1	96.7	-1.1%		-0.3%	Down	% of children in relevant age group
Immunisation uptake at 24 months - MMR	95.9	1.1%		1.5%	Down	% of children in relevant age group
Male life expectancy	80.0	3.0%		4.5%	Down	Life expectancy at birth in years
Maternal obesity	28.8	4.3%		2.7%	Up	% of women at antenatal booking
Patients (65+) with multiple A&E hospitalisations	6253.5	-0.6%		-8.4%	Down	Rate per 100,000 pop.
Patients hospitalised with asthma	18.3	-42.8%		-73.3%	Down	Rate per 100,000 pop.
Patients hospitalised with COPD	95.4	-18.5%		-54.0%	Down	Rate per 100,000 pop.
Patients hospitalised with coronary heart disease	270.5	-8.0%		-20.8%	Down	Rate per 100,000 pop.
Patients with emergency hospitalisations	5093.1	-3.5%		-29.6%	Down	Rate per 100,000 pop.
Premature births	12.2	2.9%		4.0%	Up	% of all live births
Uptake of the HPV vaccine in S3 girls	94.6	5.2%		9.8%	Up	% of S3 girls

Based on the 24 health-related indicators in the table, this IZ is situated towards the middle of the spectrum (54) in an Aberdeenshire context. The IZ fares slightly better when all IZs in Scotland are taken into consideration as it is in the top half nationally (67).

The area compares favourably to most other areas in Scotland in terms of Alcohol-related hospital stays, Developmental concerns at 27-30 month, Patients hospitalised with asthma, Patients with emergency hospitalisations and uptake of the HPV vaccine in S3 girls.

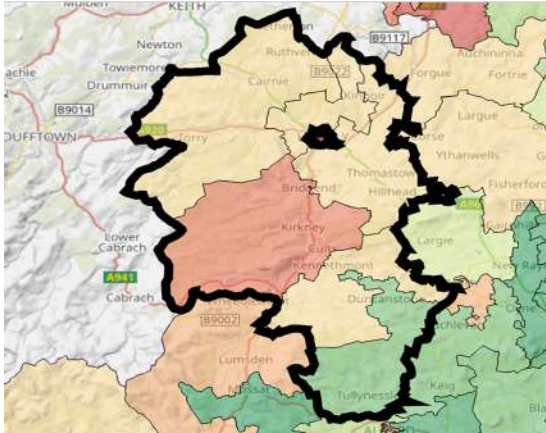
Issues that may require further investigation include:

- Premature Births
- Maternal Obesity

With regards to each of the indicators listed above the IZ compares less favourably to other areas in Aberdeenshire and, in some instances, Scotland (and/or the trend is worsening).

Clashindarroch Economic Data (1 of 3)

Rank of Household Income per Data Zone (2023)



In terms of household income, this IZ is right in the middle of the scale almost identical to the Aberdeenshire average. The median household income in 2023 equated to £41,016 which is £740 lower than the Shire average (£41,756).

Median household income ranges from £32,452 in DZ S01007006 to £50,125 in DZ S01007005.

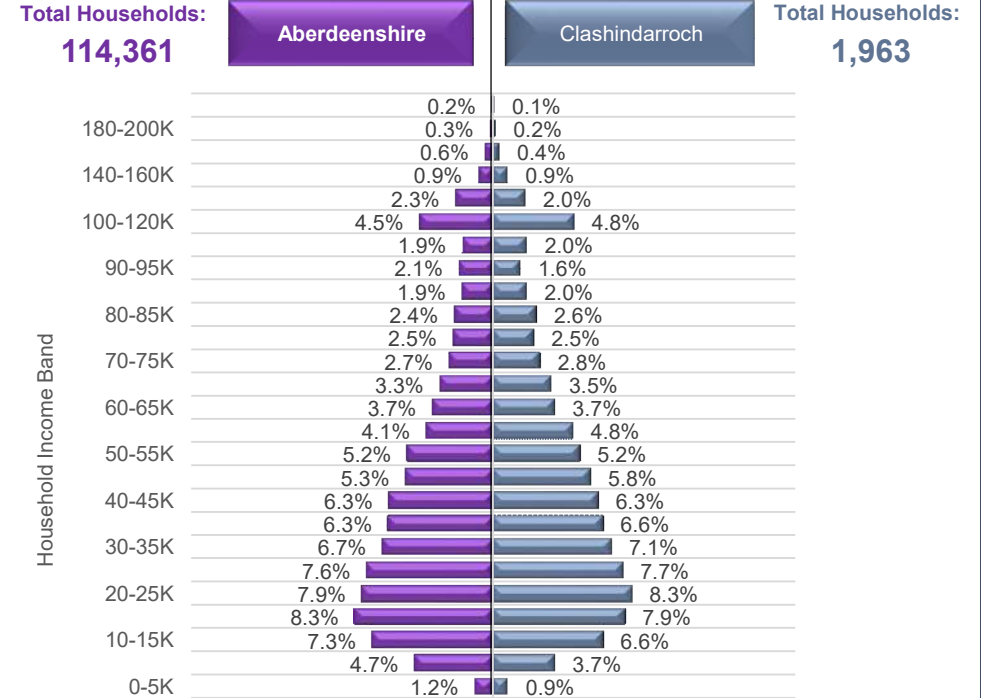
Approximately 4.6% of households in this IZ earn less than £10,000 per year, which is lower-than-average (5.3%). This equates to roughly 90 households.

In addition, Approximately 8.4% of households in this IZ earn more than £100,000 per year, which is higher than average (10.1%). This equates to roughly 165 households.

Household Income per Data Zone (2023)

Data Zone	Households	Average Income	Median Income	Lower Quartile Income
S01007002	298	£ 47,184	£ 39,559	£ 22,900
S01007003	231	£ 48,879	£ 41,332	£ 23,978
S01007004	337	£ 49,333	£ 42,150	£ 24,193
S01007005	386	£ 57,907	£ 50,125	£ 29,926
S01007006	383	£ 40,164	£ 32,452	£ 18,828
S01007007	328	£ 48,519	£ 41,430	£ 24,364

Household Income per Band, Clashindarroch & Aberdeenshire (2023)



© CACI Limited 1996 - 2022 This report shall be used solely for academic, personal and/or non-commercial purposes. The applicable copyright notices can be found at <https://www.caci.co.uk/copyrightnotices.pdf>

Median Household Income (2023)



£41,016

Aberdeenshire: £41,756

£41,016



% of Households Earning Less Than £10k (2023)



<£10K

4.6%

Aberdeenshire: 5.3%

4.6%



% of Households Earning More Than £100k (2023)



>£100K

8.4%

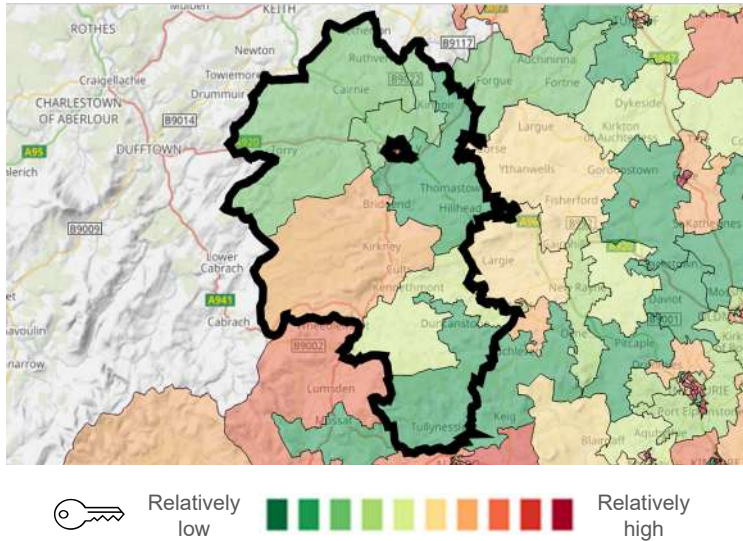
Aberdeenshire: 10.1%

8.4%

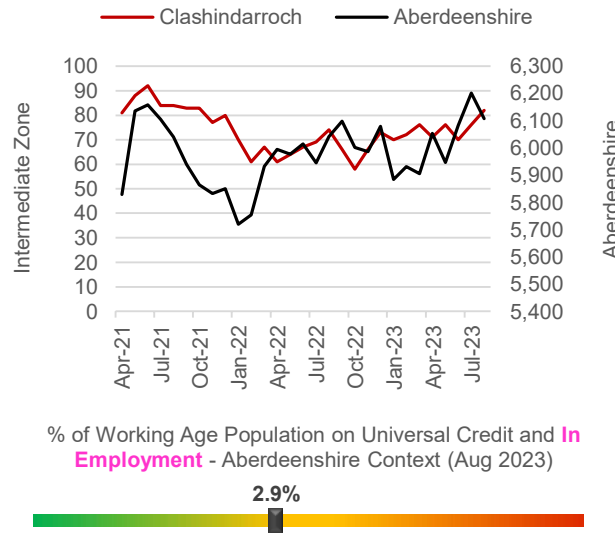


Clashindarroch Economic Data (2 of 3)

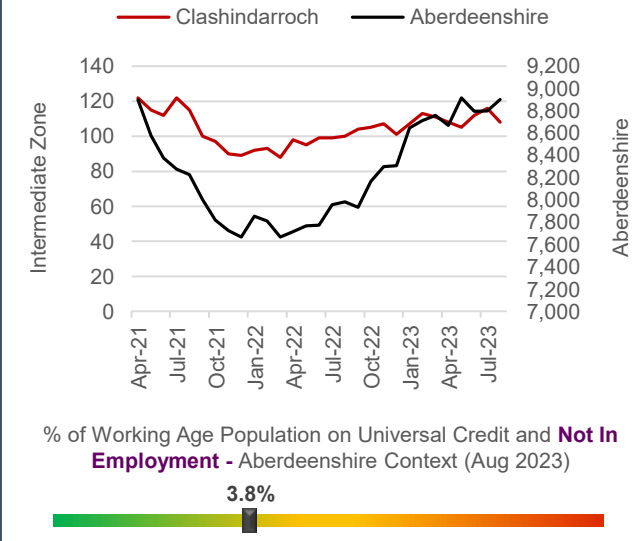
Latest Unemployment Rate - Ranking per Data Zone



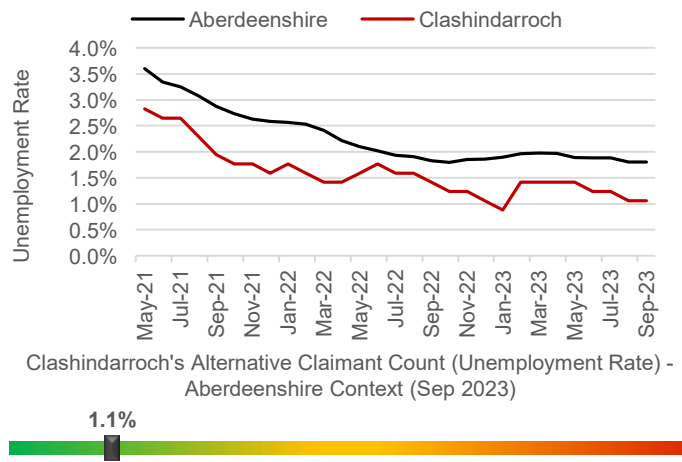
People on Universal Credit - In Employment



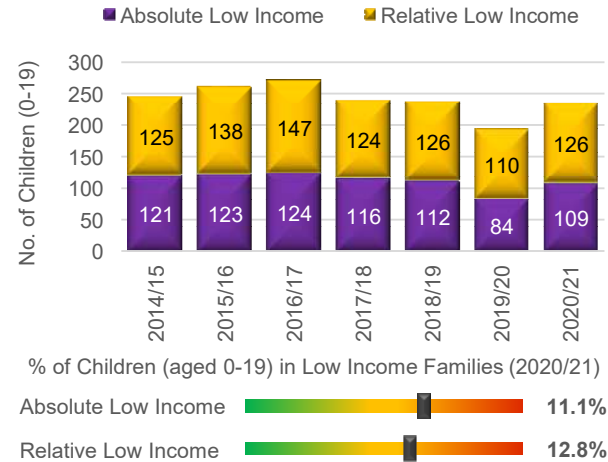
People on Universal Credit - Not In Employment



Alternative Claimant Count - Effective 'Unemployment Rate'



Children in Low Income Families

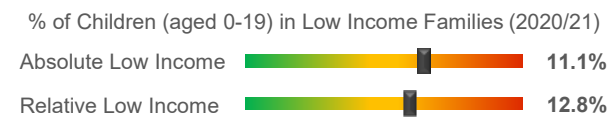


Summary

The number of people claiming Universal Credit (UC) - who are also in employment - has remained relatively steady over the last few months, contrary to the Shire-wide trend, which has increased. Latest figures show 2.9% of people aged 16-64 (who also have jobs) are claiming UC. This is towards the middle of the spectrum in a Shire context. A similar picture emerges in relation to people on UC and not in employment.

Like Aberdeenshire, the unemployment rate in the IZ has fallen substantially since the September 2020 peak of 3.8%. Latest data suggests approximately 1.1% of the Working Age population is currently out-of-work, which is slightly lower than the Aberdeenshire rate (1.8%).

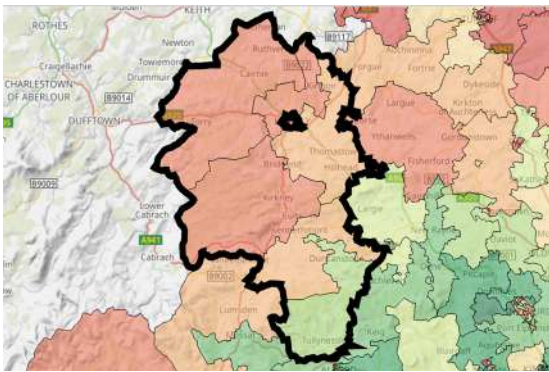
Children living in low-income families are relatively uncommon. However, recent increases suggest the issue may be coming more to the fore over recent years, particularly since 2020/21.



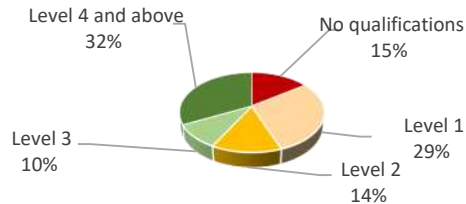
Economic Indicators

Clashindarroch Economic Data (3 of 3)

People With No Qualifications, Census 2011



% of Employees per Qualification Type



Summary

The employment numbers per broad industrial group relate to the kind of jobs within the area, which may be filled by those living outwith the IZ.

Major industries in terms of jobs in the area include the Manufacturing sector, the Health sector, Construction and the Business Administration sector.

There has been a large growth in the Public Administration sector. Jobs in this industry have trebled since 2020.

Even with the growth in these type of jobs, there has been a 6% decrease in jobs across the IZ between 2020 and 2022, suggesting this IZ is still feeling the effects post-Covid.

The area also appears to have attracted a greater number of larger enterprises over the most recent year (i.e. companies with sales in excess of £1 million).

Approximate Employment Count per Broad Industrial Group, Clashindarroch, 2020-22

Broad Industrial Group	2020	2021	2022	2020-22 % Diff.
Agriculture, forestry & fishing	100	150	100	0%
Mining, quarrying & utilities	100	5	5	-95%
Manufacturing	125	150	125	0%
Construction	125	175	150	20%
Motor trades	10	5	10	0%
Wholesale	50	35	35	-30%
Retail	15	10	25	67%
Transport & storage (inc postal)	50	45	40	-20%
Accommodation & food services	30	35	20	-33%
Information & communication	5	10	10	100%
Financial & insurance	30	20	40	33%
Property	15	15	10	-33%
Professional, scientific & technical	100	75	75	-25%
Business administration & support services	75	50	100	33%
Public administration & defence	10	20	30	200%
Education	50	75	50	0%
Health	125	125	125	0%
Arts, entertainment, recreation & other services	40	50	45	13%
Total	1,055	1,050	995	-6%

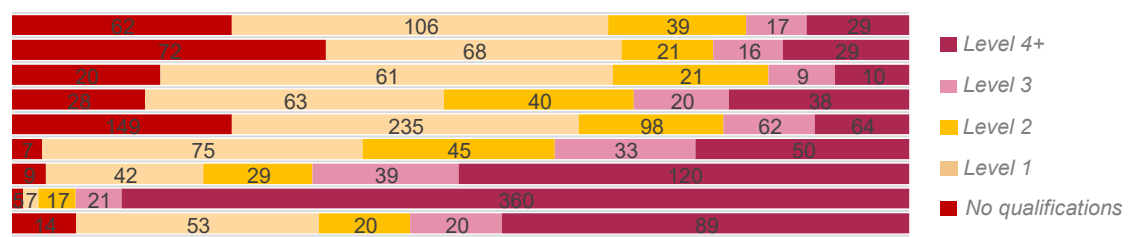
Approximate Number of Enterprises per Turnover Band (£), Clashindarroch, 2021-23

Turnover	2021	2022	2023	2021-23 % Diff.
£1m+	5	5	10	100%
£500-999k	15	20	25	67%
£200-499k	50	40	35	-30%
£100-199k	110	85	105	-5%
£50-99k	70	80	80	14%
£0-49k	105	110	100	-5%

Employees per Occupation Type, Census 2011

Elementary occupations	253
Process, plant and machine operatives	206
Sales and customer service occupations	121
Caring, leisure and other service occupations	189
Skilled trades occupations	608
Administrative and secretarial occupations	210
Associate professional and technical...	239
Professional occupations	410
Managers, directors and senior officials	196

Employees per Qualification & Occupation Type, Census 2011



Clashindarroch Housing Data



Relatively sparse / rural

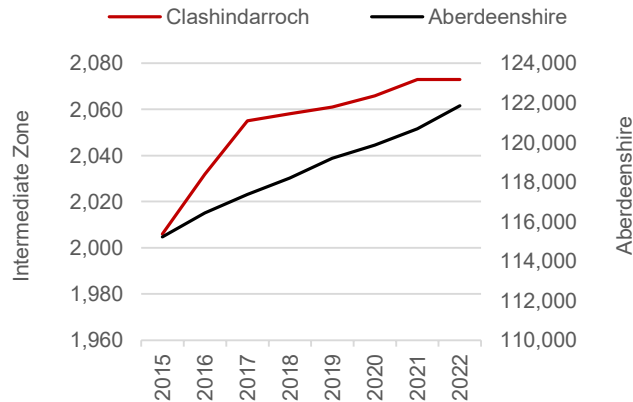
0.05

Dwellings per Hectare (2022)



Relatively dense / urban

Number of Dwellings, 2015-22



% Growth in No. of Dwellings 2015-22 (Aberdeenshire Context)

2.5%

Summary

At 0.05 dwellings per hectare, this IZ is one of the lowest on the spectrum between the rural and urban extremes.

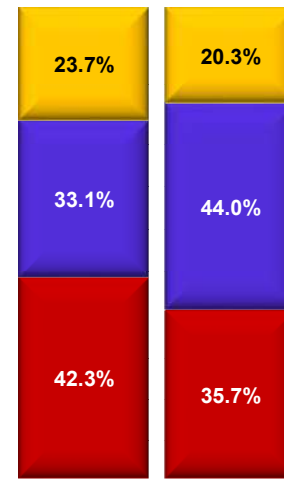
The number of dwellings in the IZ has increased by 2.5% since 2015, which is towards the middle of the spectrum in an Aberdeenshire context.

House building in the area has been on steady increase since 2015 – 2021 and has since plateaued.

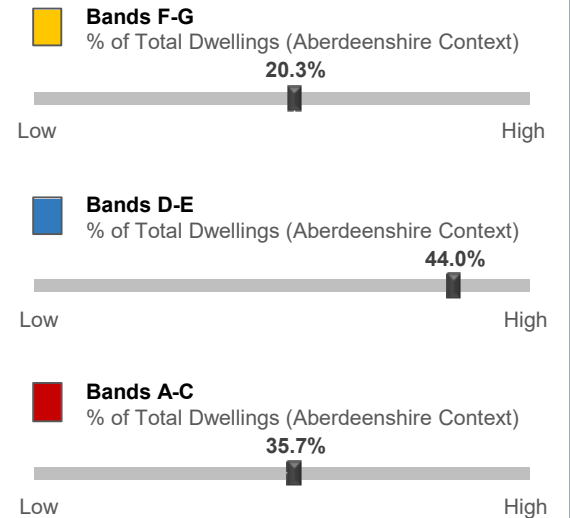
A relatively large proportion of the dwellings in this IZ (44.0%) fall within Council Tax Bands D-E. This puts the IZ towards the higher end of the spectrum. Relatively few properties fall within Bands F-G (20.3%).

The median house price is £245,000 which is significantly higher £34,005 higher than the Aberdeenshire average (£210,995).

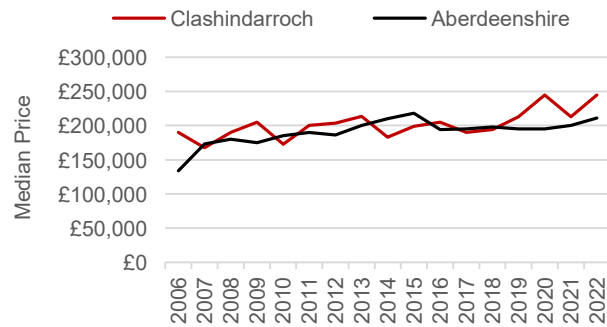
Proportion of Dwellings per Council Tax Band, 2022



Aberdeenshire Clashindarroch



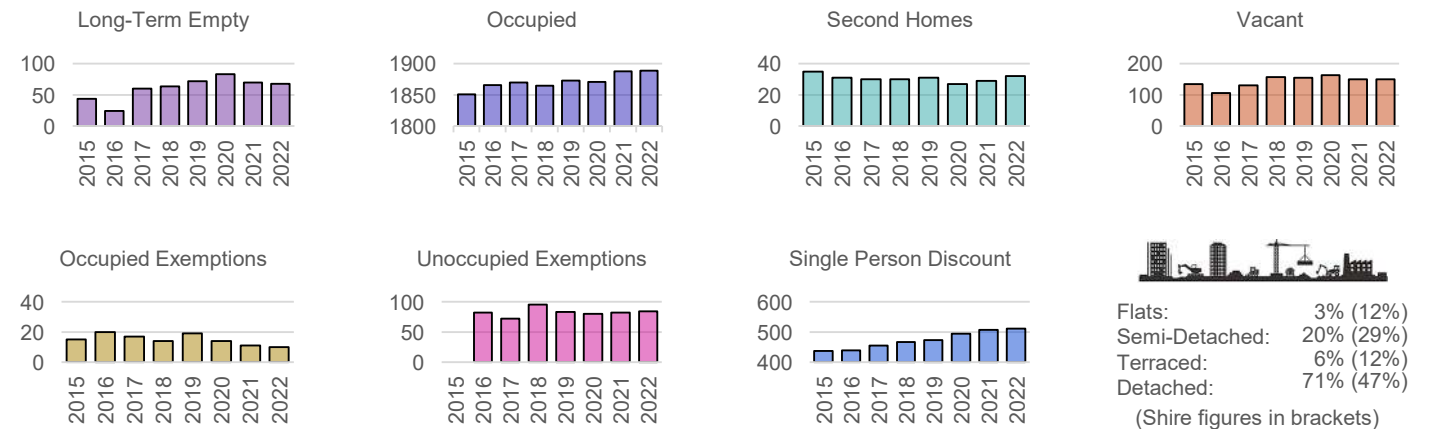
Median Residential House Prices (Sales), 2006-22



2022 Median House Price (Aberdeenshire Context)

£245,000

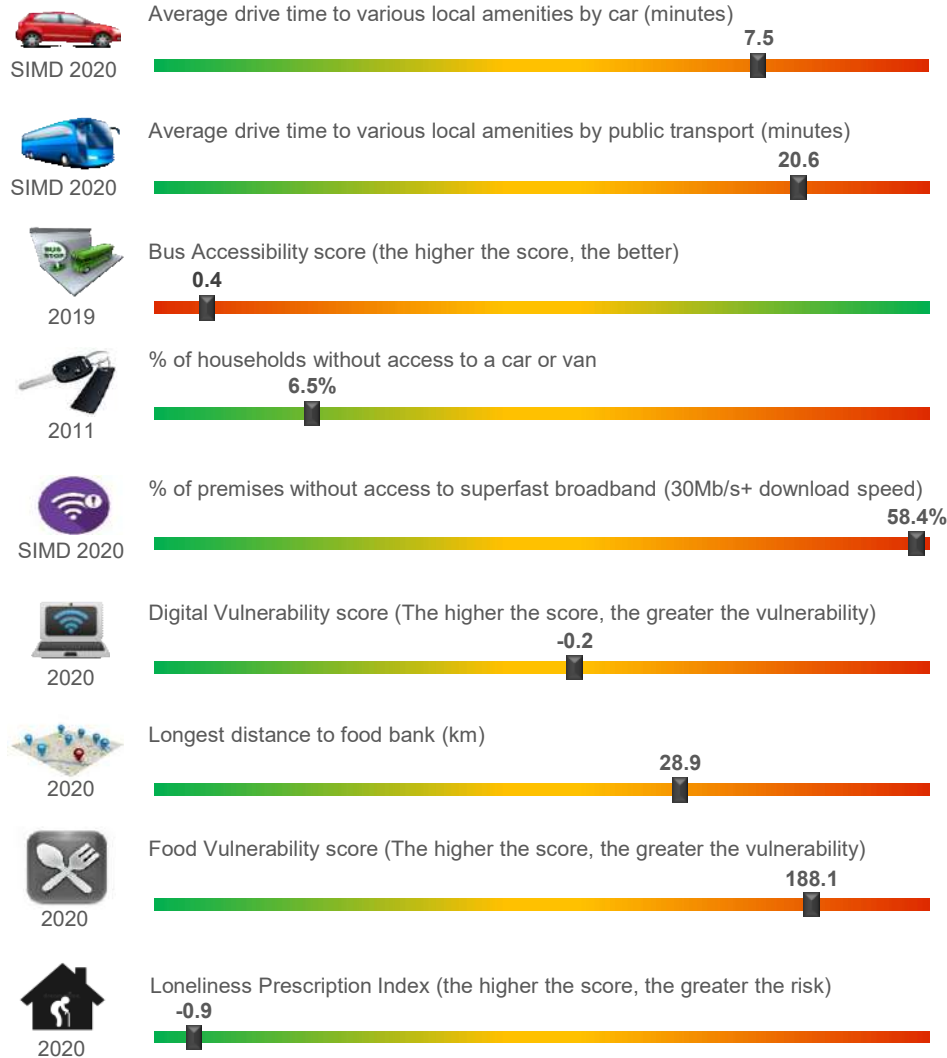
Housing Types, 2015-22 (Data on Flats, etc., relate to 2017 - the latest year for which data are available)



Other Indicators

Clashindarroch Other Socio-Economic Data

Geographic Access / Digital Connectivity / Food Vulnerability / Loneliness Proxy



Housing / Environment / Crime Rate / Educational Attainment



Summary

According to the miscellaneous socio-economic indicators on this page, the IZ appears to be well served in terms of households with access to a car or van (93.5%), private outdoor garden space, lower % of 16+ population in receipt of Housing Benefits and less overcrowding. Due to the more rural aspect of the IZ, the average distance to the nearest park, garden or public playing fields is relatively high. Geographic access in terms of drive times to local amenities is towards the higher end, however bus accessibility is very low. Hence the need for reliance on car/van. Approximately 54.1% of the premises in the IZ cannot access superfast broadband (58.4%) - 2nd highest in Aberdeenshire and a lower Digital Vulnerability Score suggesting that access to technology and the skills to use them are low.