

Mintlaw

Intermediate Zone Statistical Summary

2023

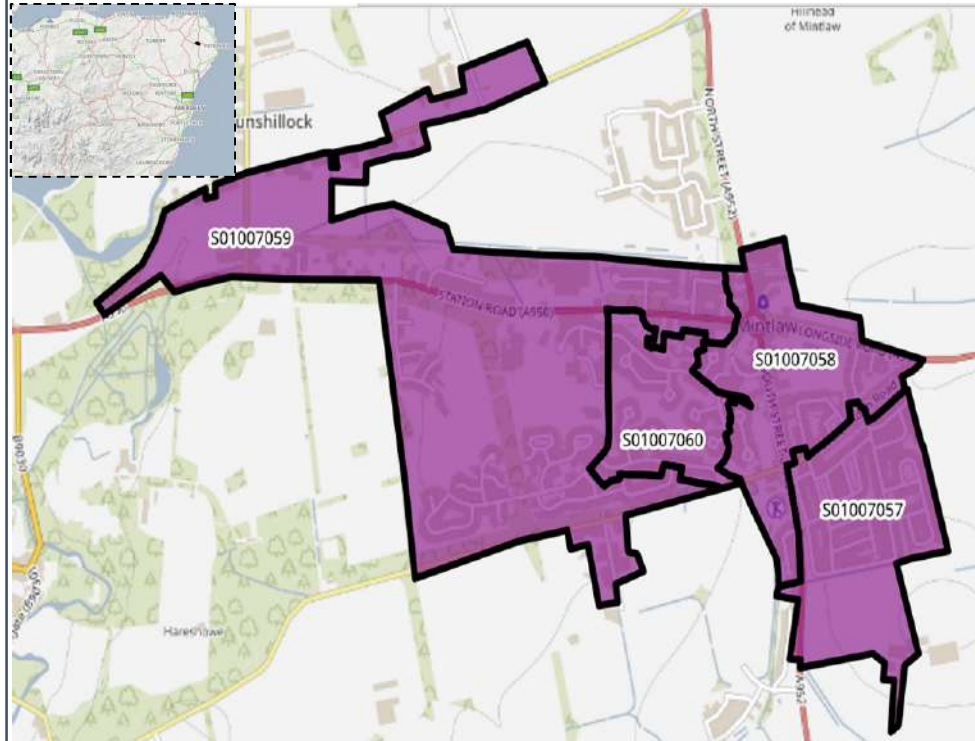


Daniel Stanford

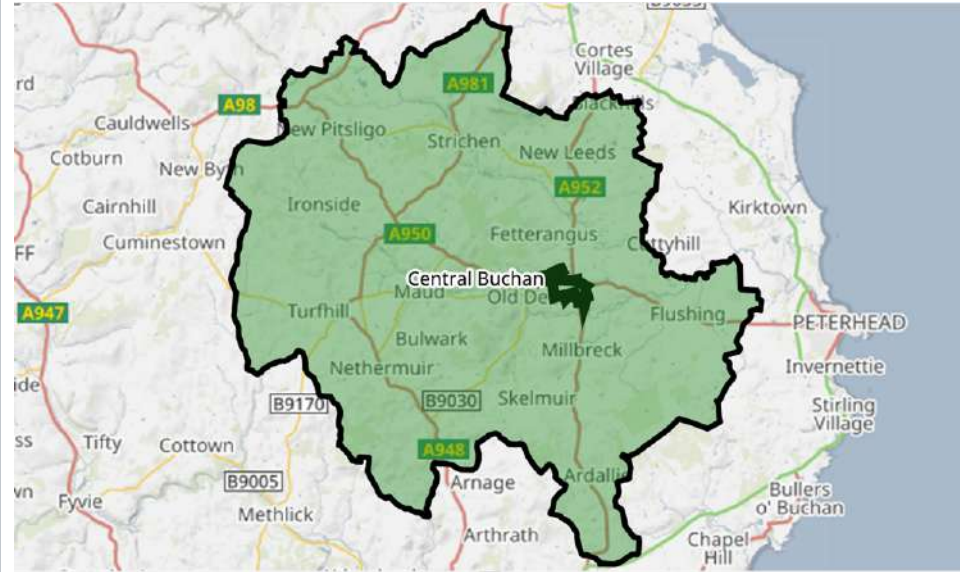


Mintlaw

Data Zones Within the Intermediate Zone



Relevant Multi-Member Wards



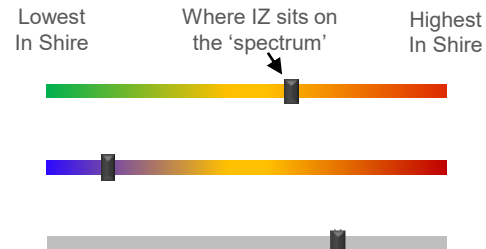
Notes on the Maps

The map on the left shows the location and the geographic area of the Mintlaw Intermediate Zone which contains four Data Zones. The Intermediate Zone is within Ward 4, Central Buchan.

Spectrum Charts Explained

The following statistical pages frequently utilise spectrum charts as a visual aid to accompany an indicator. They are used to place the relevant Intermediate Zone (IZ) in the context of all other IZs in Aberdeenshire with regards to that indicator.

The charts to the right are examples of the spectrum charts used in this report. The black line represents where the IZ sits in the context of the highest and lowest figures in Aberdeenshire. If the black line is situated towards the left-hand side, the IZ recorded one of the lowest figures in Aberdeenshire. Conversely, if the black line is towards the right-hand side, it recorded one of the highest figures in Aberdeenshire.



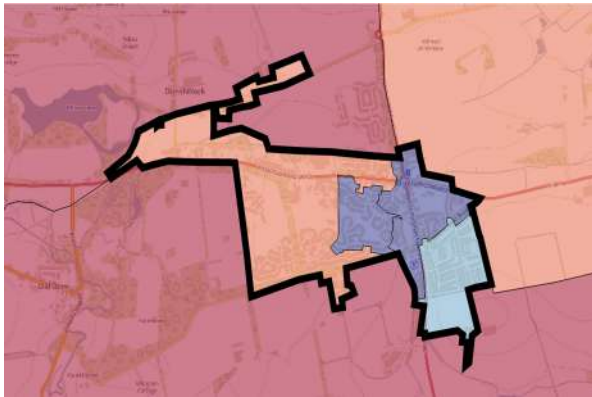
The green/red spectrum charts are the most common type. If the black line is situated towards the red end of the spectrum, it means the figure is objectively worse than most other IZs in Aberdeenshire and *vice versa*.

The blue/red spectrum charts are used in the demographic section to denote high population growth (red) and population decline (blue).

The grey spectrum charts are simply used to denote high and low in the context of Aberdeenshire, where the high / low figure is neither good nor bad. An example would be the proportion of dwellings that fall within Council Tax Bands F-G.

Mintlaw Demographic Data

Map of Mintlaw: Population Change (2014-2021)



Low Growth / Depopulation (Blue) High Growth (Red)

The population of the Mintlaw IZ decreased by 7.5% between 2014 and 2021. This is mainly down to the population shifts in DZ S01007060 where there was a decrease of 92 (14.5%) and DZ S01007058 where there was a decrease of 72 (12.0%).

Compared to 2014 Mintlaw has seen significant decreases in the younger age groups especially with the 0-9 age range with a 30.2% decrease and the 30 – 39 age group which saw a 20.1% decrease..

At 55.6%, the proportion of Working Age people in the IZ is one of the lowest in the region when looking at the spectrum in an Aberdeenshire context.

At 17.2%, there is a lesser proportion of children in the IZ is than in most other areas across Aberdeenshire.

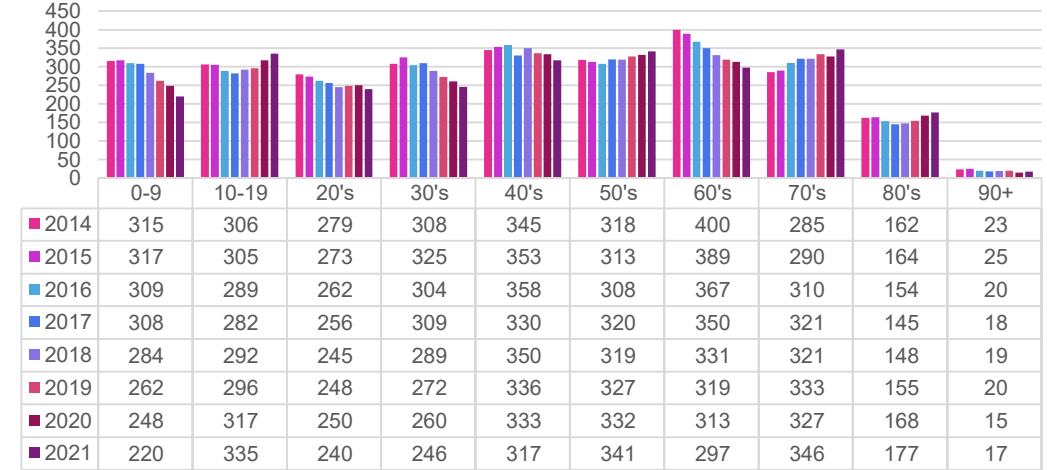
At 27.3% the number of older residents in the IZ is much higher than most other areas of Aberdeenshire with the spike in population change among the 70 - 79 age range.

In all the DZ's that have seen population decreases this is mostly down to a drop in children and working-class age groups.

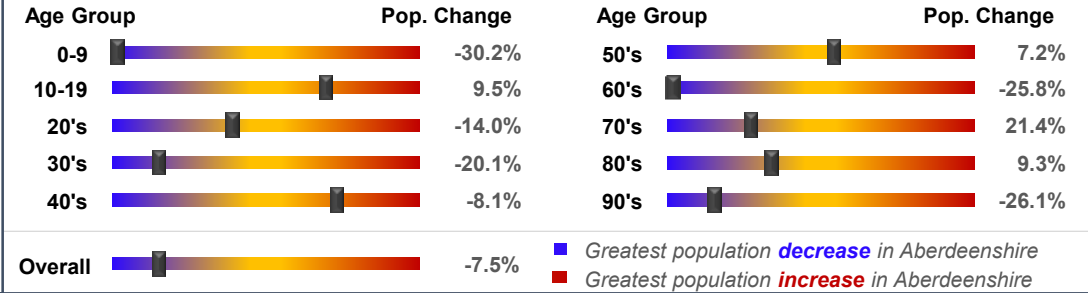
Population Change per Data Zone, 2014 & 2021

Data Zone	2014	2021	% Difference
S01007057	512	472	-7.8%
S01007058	601	529	-12.0%
S01007059	993	992	-0.1%
S01007060	635	543	-14.5%
Total	2741	2536	-7.5%

Population per Age Group, Mintlaw, 2014-2021



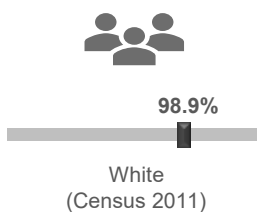
Rate of Population Change per Age Group, 2021 Compared to 2014



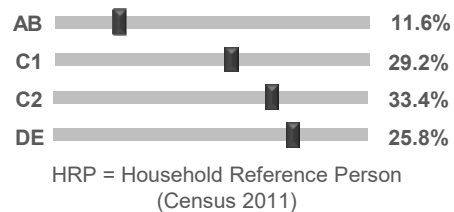
Country of Birth



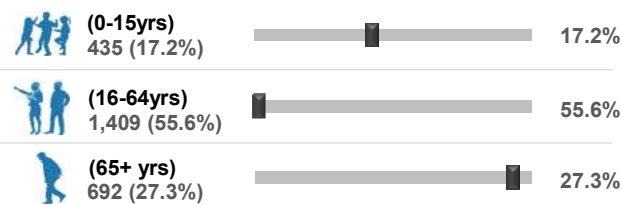
Ethnicity



Approximated Social Grade of HRP

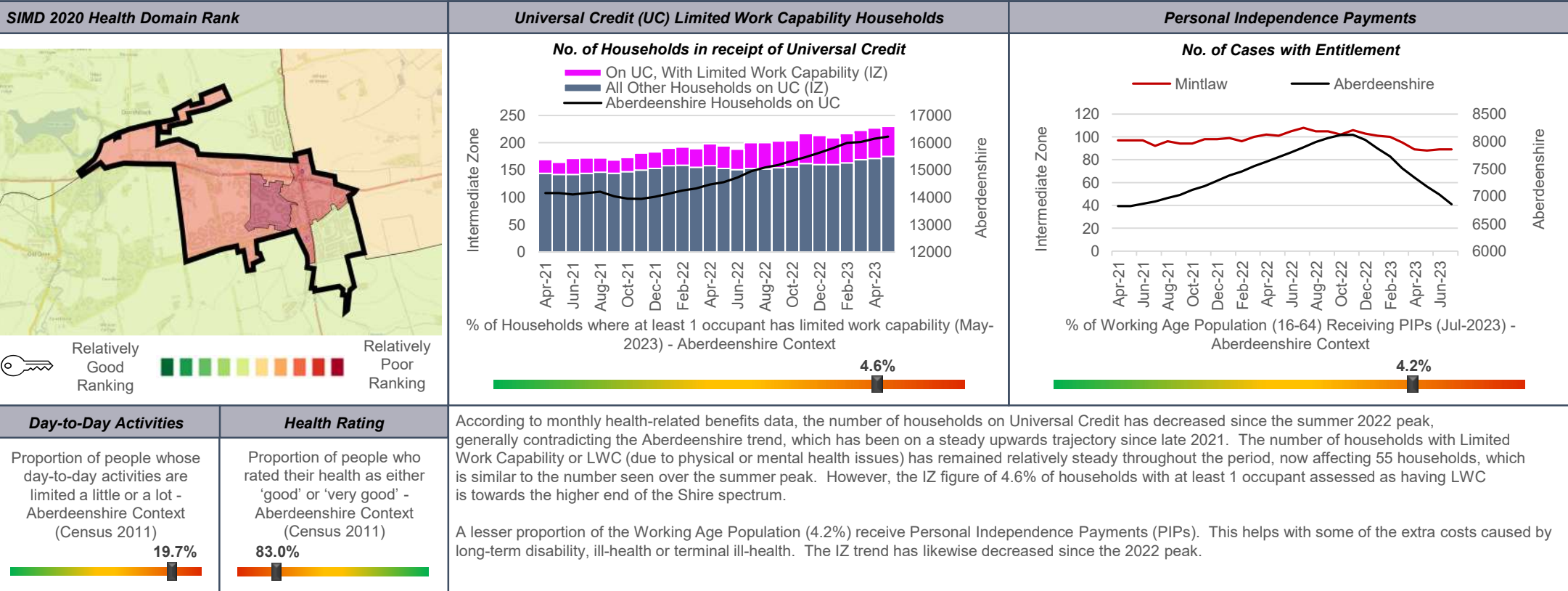


Population per Broad Age Group, 2021



In 2021 2,536 people lived in Mintlaw -- 435 (17.2%) were under 15 years of age, 1,409 (55.6%) were aged 16-64, and 692 (27.3%) were over 65.

The black markers show where these percentages sit in the context of Aberdeenshire: left = low; right = high.

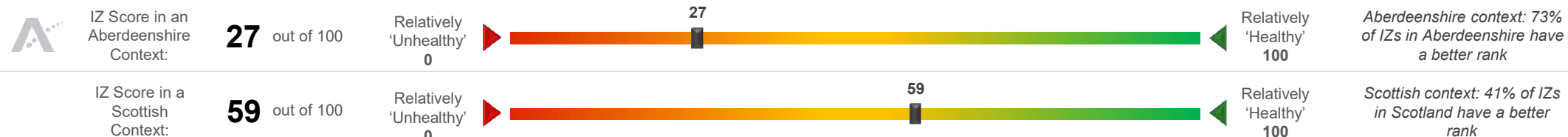


SIMD 2020 Health Domain Indicators per each Data Zone in the Mintlaw Intermediate Zone (compared to Aberdeenshire average)

SIMD Health Domain Indicator (Data Zones colour-coordinated with map) >>	S01007057	S01007058	S01007059	S01007060	Shire
Health Domain Rank (see map for colour-coded rankings) (the higher, the better)	5744	3318	4062	3027	5,254
Comparative Illness Factor (Scotland = 100) (the lower, the better)	45	100	75	115	58
Emergency stays in hospital (Scotland = 100) (the lower, the better)	55.8	77.0	71.7	99.2	71.5
Hospital stays related to alcohol misuse (Scotland = 100) (the lower, the better)	28.4	76.7	53.6	34.7	45.4
Hospital stays related to drug misuse (Scotland = 100) (the lower, the better)	39.0	64.4	30.6	50.7	30
Proportion of live singleton births of lowbirth weight (the lower, the better)	0.0%	0.0%	6.9%	5.0%	4.0%
Proportion of population being prescribed drugs for anxiety, depression or psychosis	20.3%	22.7%	19.9%	20.6%	15.6%
Standardised Mortality Ratio (Scotland = 100) (the lower, the better)	74	94	117	90	85

Mintlaw Health Data (2 of 2)

Mintlaw's position on the 'Health Spectrum' – Aberdeenshire and Scottish Context (the higher the score, the better)



Selection of ScotPHO indicators, Mintlaw IZ compared to Aberdeenshire & Scotland (latest data)

Indicator	Latest Available Figures				IZ Trend	Indicator Measurement
	IZ	IZ's latest figure compared to:				
		Aberdeenshire	Scotland			
Alcohol-related hospital stays	181.1	-31.9%		-70.4%	Down	Rate per 100,000 pop.
All-cause mortality among the 15-44 year olds	224.6	138.0%		91.7%	Up	Rate per 100,000 pop.
Babies exclusively breastfed at 6-8 weeks	26.7	-13.9%		-5.2%	Up	% of babies with a valid feeding status
Bowel screening uptake	76.3	3.3%		10.8%	Up	% of eligible people (aged 50-74)
Child dental health in primary 1	71.4	-7.4%		-1.7%	Up	% of P1 pupils
Child dental health in primary 7	57.1	-22.6%		-17.8%	Up	% of P7 pupils
Child healthy weight in primary 1	56.3	-21.1%		-13.5%	Down	% of P1 pupils
Deaths all ages	1116.7	5.5%		-5.4%	Up	Rate per 100,000 pop.
Developmental concerns at 27-30 months	3.9	1.1%		-10.7%	Up	% of children reviewed
Early deaths from cancer (<75)	165.2	25.4%		10.5%	Up	Rate per 100,000 pop.
Early deaths from coronary heart disease (<75)	40.1	6.1%		-23.8%	Down	Rate per 100,000 pop.
Female life expectancy	81.6	-0.3%		1.1%	Up	Life expectancy at birth in years
Healthy birth weight	85.7	2.7%		1.6%	Down	% of all singleton births
Immunisation uptake at 24 months - 6 in 1	100.0	2.2%		3.0%	Down	% of children in relevant age group
Immunisation uptake at 24 months - MMR	98.0	3.2%		3.7%	Down	% of children in relevant age group
Male life expectancy	78.5	1.1%		2.6%	Down	Life expectancy at birth in years
Maternal obesity	19.6	-4.8%		-6.5%	Down	% of women at antenatal booking
Patients (65+) with multiple A&E hospitalisations	6735.1	7.0%		-1.3%	Down	Rate per 100,000 pop.
Patients hospitalised with asthma	34.7	8.6%		-49.3%	Down	Rate per 100,000 pop.
Patients hospitalised with COPD	88.7	-24.2%		-57.2%	Down	Rate per 100,000 pop.
Patients hospitalised with coronary heart disease	358.2	21.8%		4.8%	Down	Rate per 100,000 pop.
Patients with emergency hospitalisations	6153.1	16.5%		-15.0%	Up	Rate per 100,000 pop.
Premature births	5.4	-3.9%		-2.9%	Down	% of all live births
Uptake of the HPV vaccine in S3 girls	72.9	-16.5%		-11.9%	Down	% of S3 girls

Based on the 24 health-related indicators in the table, this IZ is situated at the more vulnerable end of the spectrum (27) in an Aberdeenshire context. The IZ fares slightly better when all IZs in Scotland are taken into consideration as it is in the top half nationally (59).

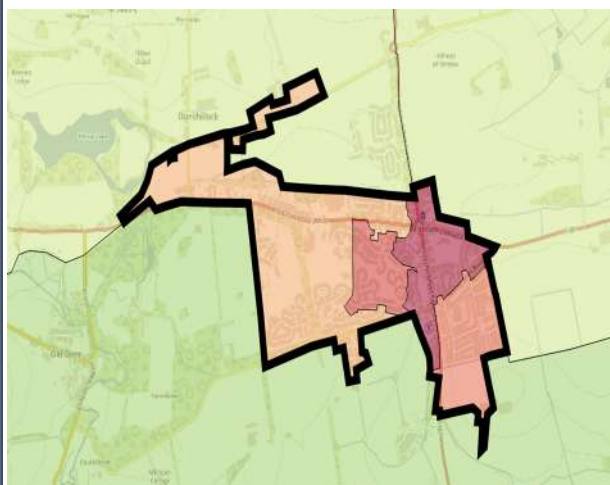
The area compares favourably to most other areas in Scotland in terms of Alcohol-related hospital stays, Developmental concerns at 27-30 months, Bowel screening uptake, Patients with emergency hospitalisations and Child dental health in Primary 1.

- Issues that may require further investigation include:
- Child health weight in Primary 1
 - Child dental health in Primary 7
 - Uptake of the HPV vaccine in S3 girls

With regards to each of the indicators listed above the IZ compares less favourably to other areas in Aberdeenshire and, in some instances, Scotland (and/or the trend is worsening).

Mintlaw Economic Data (1 of 3)

Rank of Household Income per Data Zone (2023)



In terms of household income, this IZ is among the poorest in Aberdeenshire. The median household income in 2023 equated to £31,246 which is £10,510 lower than the Shire average (£41,756).

Median household income ranges from £35,821 in DZ S01007059 to £26,047 in DZ S01007058.

Approximately 8.7% of households in this IZ earn less than £10,000 per year, which is higher-than-average (5.3%). This equates to roughly 103 households.

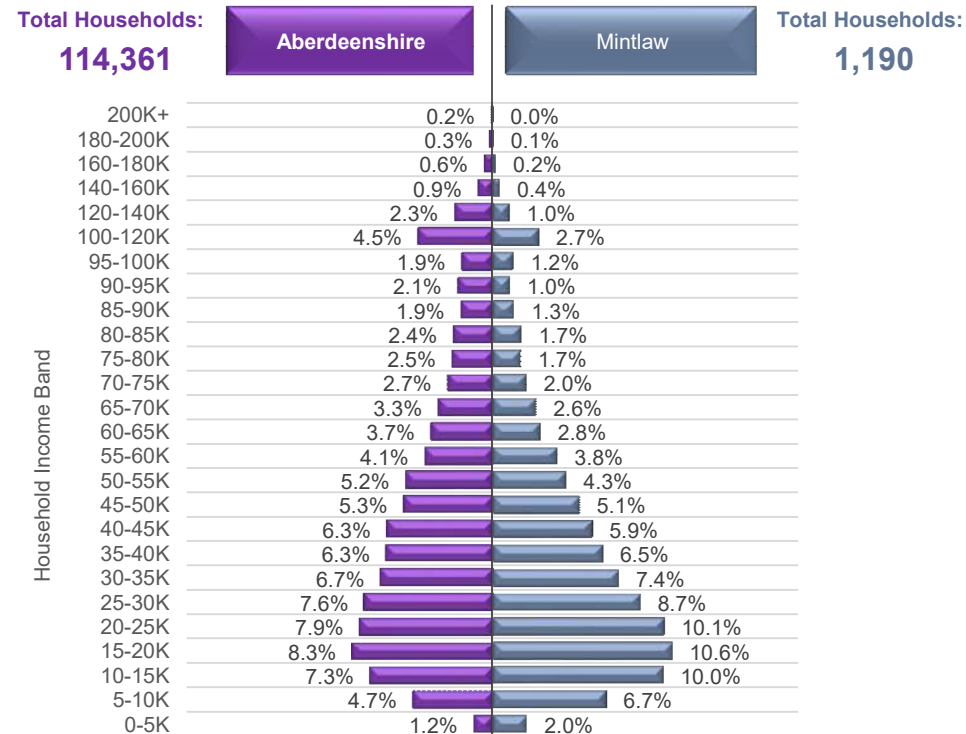
In addition, Approximately 4.5% of households in this IZ earn more than £100,000 per year, which is lower than average (10.1%). This equates to roughly 54 households.



Household Income per Data Zone (2023)

Data Zone	Households	Average Income	Median Income	Lower Quartile Income
S01007057	239	£ 40,681	£ 32,906	£ 19,519
S01007058	282	£ 33,965	£ 26,047	£ 14,707
S01007059	449	£ 43,532	£ 35,821	£ 20,614
S01007060	220	£ 34,572	£ 28,014	£ 16,418

Household Income per Band, Mintlaw & Aberdeenshire (2023)



© CACI Limited 1996 - 2022 This report shall be used solely for academic, personal and/or non-commercial purposes. The applicable copyright notices can be found at <https://www.caci.co.uk/copyrightnotices.pdf>

Median Household Income (2023)



£31,246

Aberdeenshire: £41,756

£31,246



% of Households Earning Less Than £10k (2023)



<£10K

8.7%

Aberdeenshire: 5.3%

8.7%



% of Households Earning More Than £100k (2023)



>£100K

4.5%

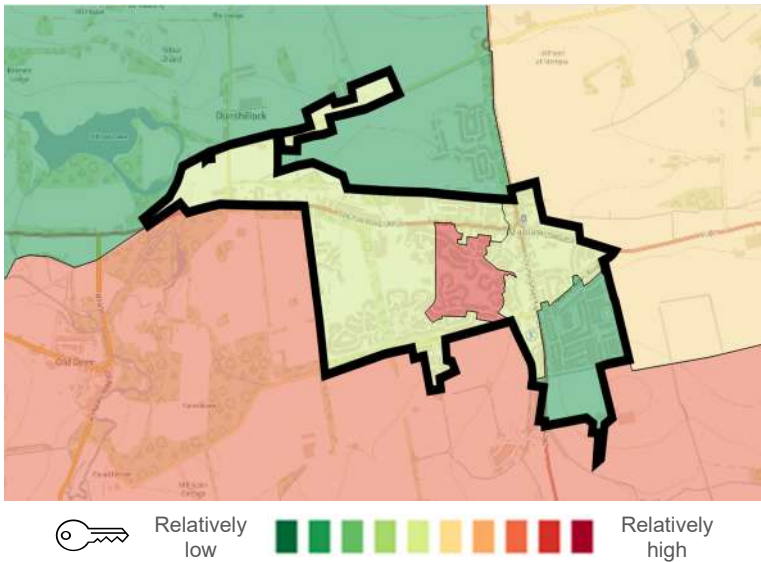
Aberdeenshire: 10.1%

4.5%

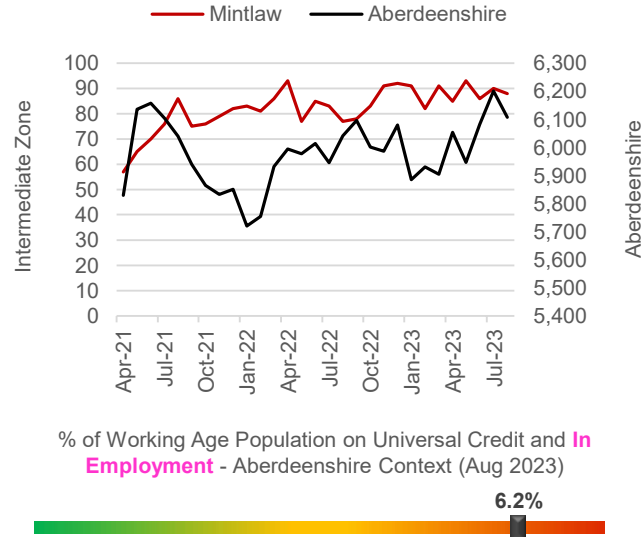


Mintlaw Economic Data (2 of 3)

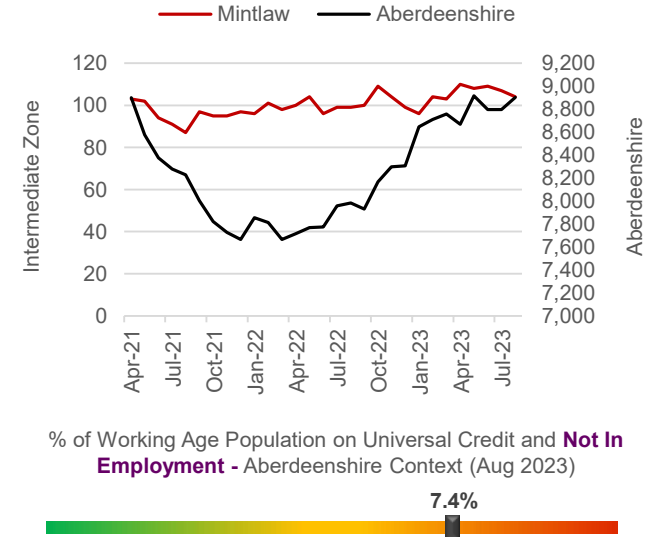
Latest Unemployment Rate - Ranking per Data Zone



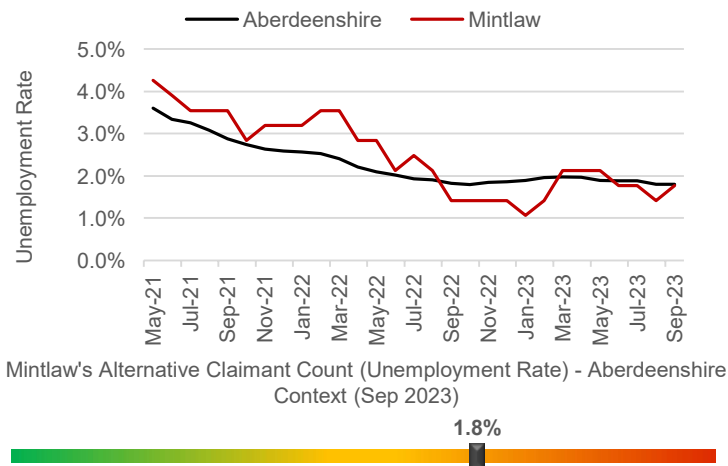
People on Universal Credit - In Employment



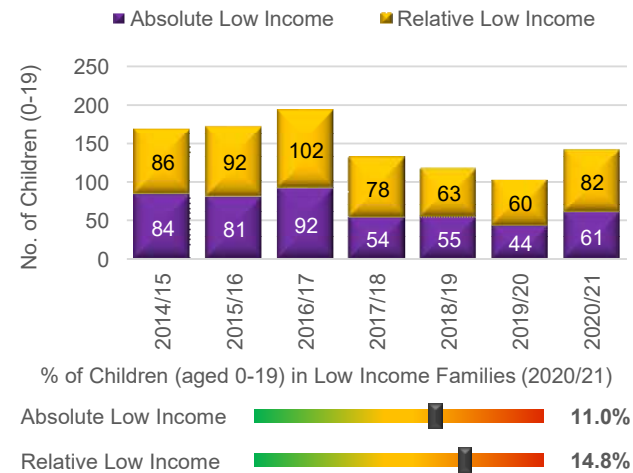
People on Universal Credit - Not In Employment



Alternative Claimant Count - Effective 'Unemployment Rate'



Children in Low Income Families



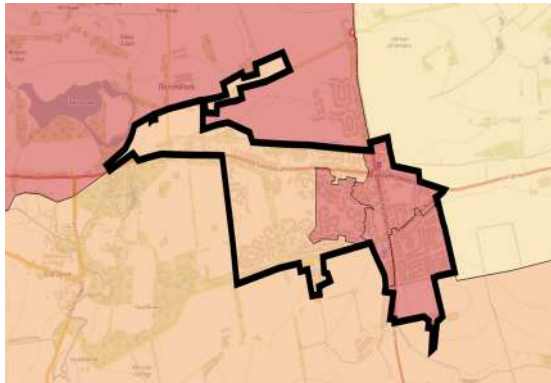
Summary

The number of people claiming Universal Credit (UC) - who are also in employment - has remained relatively steady over the last few months, contrary to the Shire-wide trend, which has increased. Latest figures show 6.2% of people aged 16-64 (who also have jobs) are claiming UC. This is towards the higher end of the spectrum in a Shire context. A similar picture emerges in relation to people on UC and not in employment.

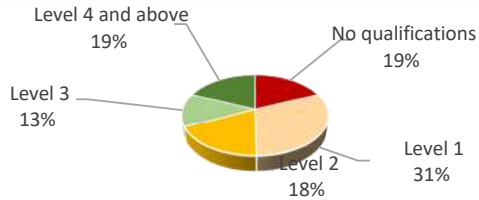
Like Aberdeenshire, the unemployment rate in the IZ has fallen substantially since the September 2020 peak of 3.8%. Latest data suggests approximately 1.8% of the Working Age population is currently out-of-work, which is identical to the Aberdeenshire rate (1.8%).

Children living in low-income families are relatively uncommon. However, recent increases suggest the issue may be coming more to the fore over recent years, particularly since 2020/21.

People With No Qualifications, Census 2011



% of Employees per Qualification Type



Summary

The employment numbers per broad industrial group relate to the kind of jobs within the area, which may be filled by those living outwith the IZ.

Major industries in terms of jobs in the area include the Construction sector, the Professional sector, Retail and the Education sector.

There has been a large growth in Construction sector. Jobs in this industry have increased by 50% since 2020.

Even with the growth in these type of jobs, there has been a 11% decrease in jobs across the IZ between 2020 and 2022, suggesting the IZ is still feeling the effects post-Covid.

The area also appears to have lost a greater number of smaller enterprises over the most recent year (Revenue between £50k - £199k).

Approximate Employment Count per Broad Industrial Group, Mintlaw, 2020-22

Broad Industrial Group	2020	2021	2022	2020-22 % Diff.
Agriculture, forestry & fishing	0	10	0	0%
Mining, quarrying & utilities	0	0	0	0%
Manufacturing	25	25	5	-80%
Construction	50	50	75	50%
Motor trades	0	0	20	0%
Wholesale	15	20	20	33%
Retail	175	175	100	-43%
Transport & storage (inc postal)	10	10	10	0%
Accommodation & food services	100	75	75	-25%
Information & communication	10	10	10	0%
Financial & insurance	0	0	0	0%
Property	0	0	0	0%
Professional, scientific & technical	75	50	75	0%
Business administration & support services	10	10	5	-50%
Public administration & defence	100	100	100	0%
Education	225	225	225	0%
Health	100	125	75	-25%
Arts, entertainment, recreation & other services	10	10	10	0%
Total	905	895	805	-11%

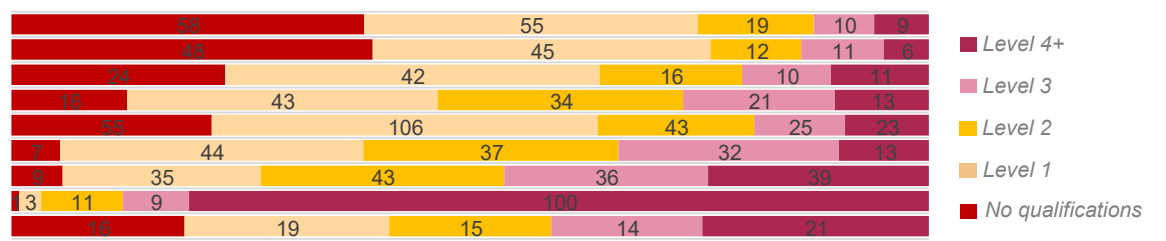
Approximate Number of Enterprises per Turnover Band (£), Mintlaw, 2021-23

Turnover	2021	2022	2023	2021-23 % Diff.
£1m+	0	0	0	0%
£500-999k	0	0	0	0%
£200-499k	0	0	0	0%
£100-199k	15	5	10	-33%
£50-99k	15	10	0	-100%
£0-49k	0	0	0	0%

Employees per Occupation Type, Census 2011

Elementary occupations	151
Process, plant and machine operatives	122
Sales and customer service occupations	103
Caring, leisure and other service occupations	127
Skilled trades occupations	252
Administrative and secretarial occupations	133
Associate professional and technical...	162
Professional occupations	124
Managers, directors and senior officials	85

Employees per Qualification & Occupation Type, Census 2011





Relatively sparse / rural

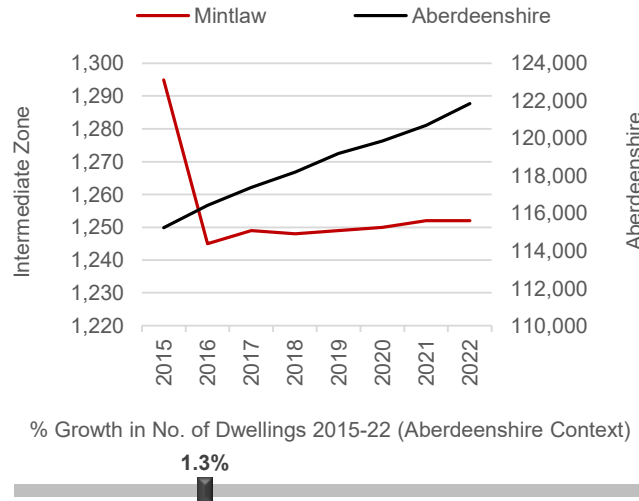
Dwellings per Hectare (2022)

8.67



Relatively dense / urban

Number of Dwellings, 2015-22



Summary

At 8.67 dwellings per hectare, this IZ is in the higher range of the spectrum between the rural and urban extremes.

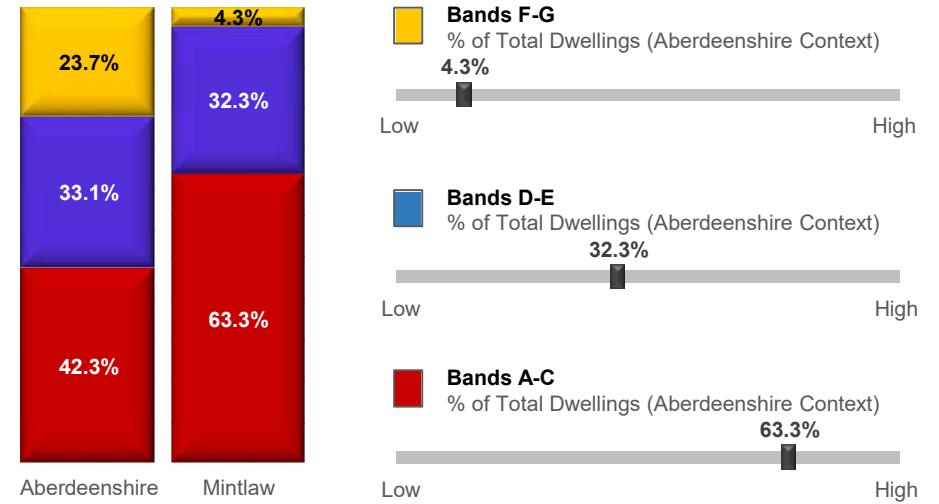
The number of dwellings in the IZ has increased by 1.3% since 2015, which is towards the lower end of the spectrum in an Aberdeenshire context.

House building in the area has plateaued since 2017.

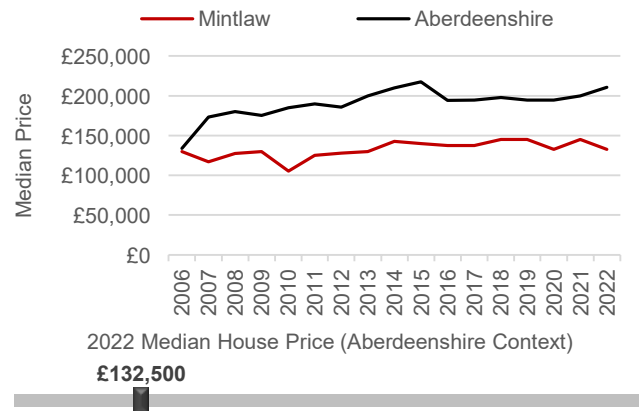
A relatively large proportion of the dwellings in this IZ (63.3%) fall within Council Tax Bands A-C. This puts the IZ towards the higher end of the spectrum. Relatively few properties fall within Bands F-G (4.3%).

The median house price is £132,500 which is significantly lower £78,495 lower than the Aberdeenshire average (£210,995).

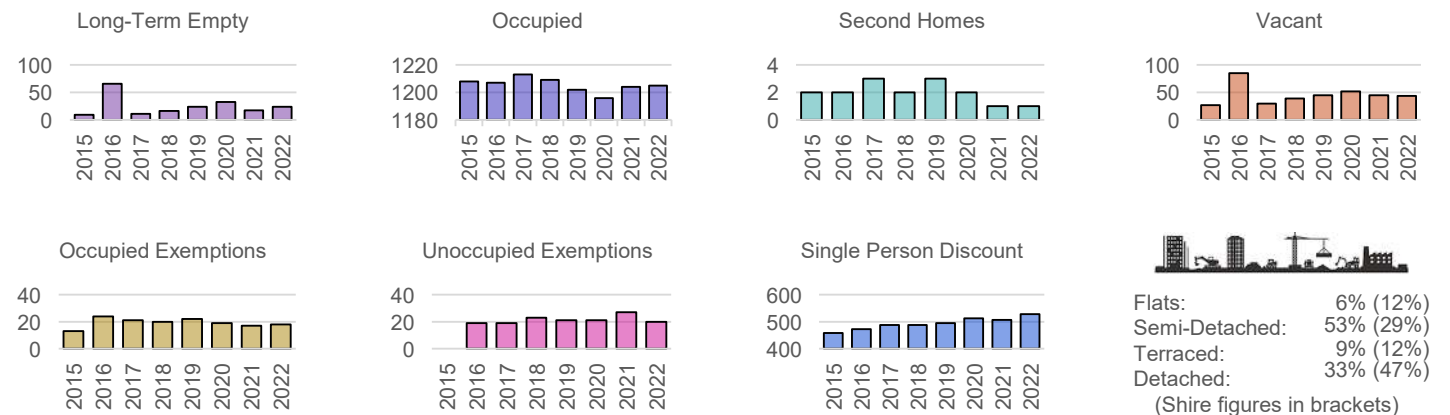
Proportion of Dwellings per Council Tax Band, 2022



Median Residential House Prices (Sales), 2006-22

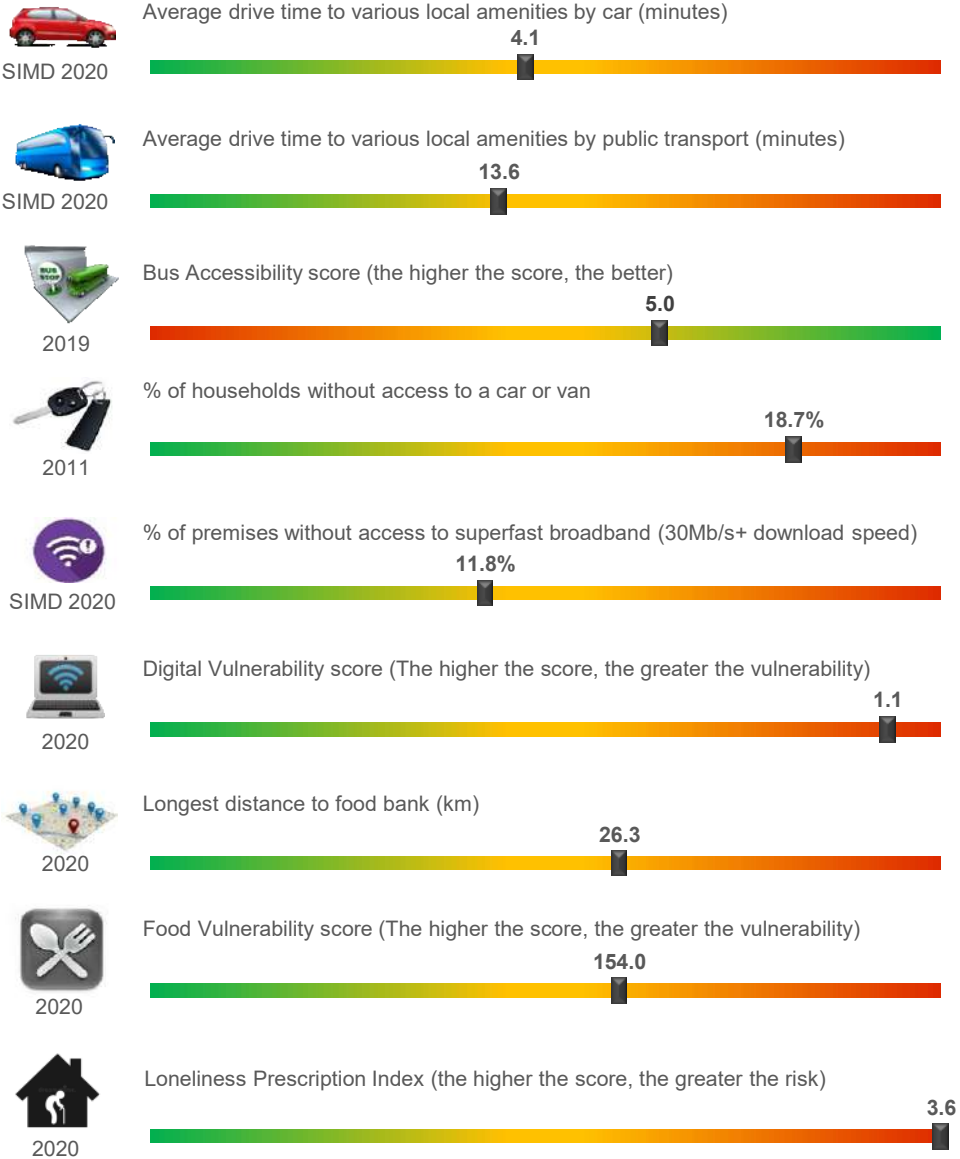


Housing Types, 2015-22 (Data on Flats, etc., relate to 2017 - the latest year for which data are available)

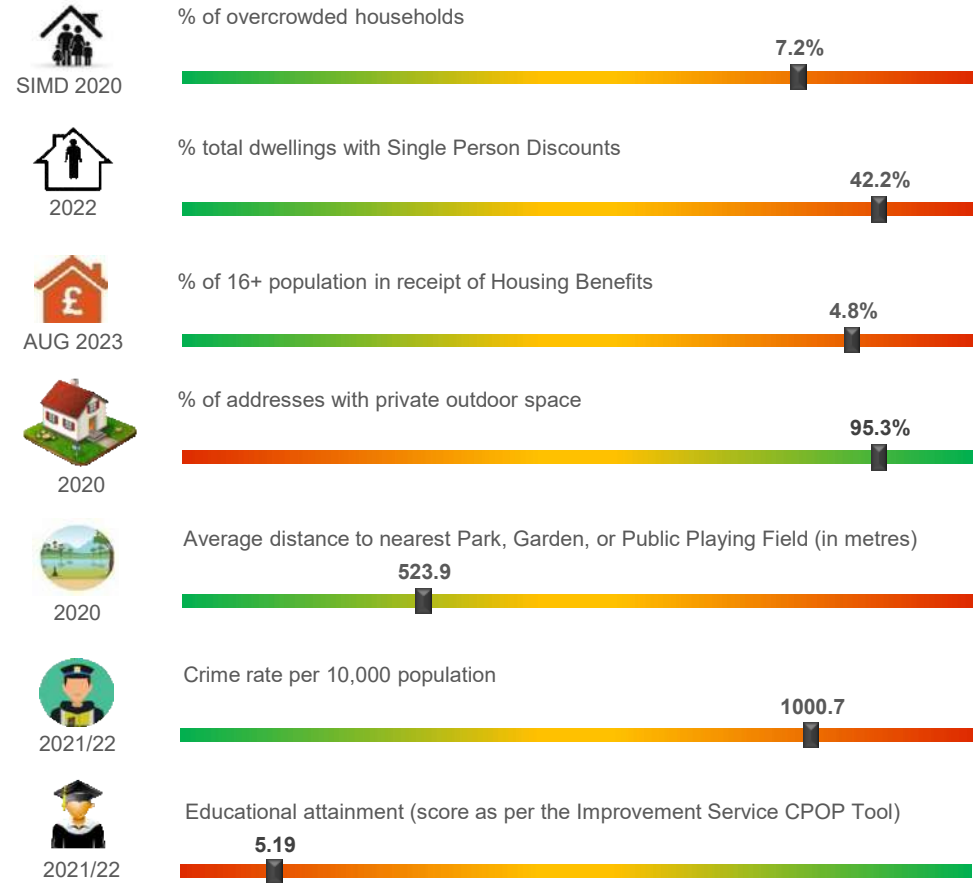


Mintlaw Other Socio-Economic Data

Geographic Access / Digital Connectivity / Food Vulnerability / Loneliness Proxy



Housing / Environment / Crime Rate / Educational Attainment



Summary

According to the miscellaneous socio-economic indicators on this page, the IZ appears to well served in terms of households with average drive times to various local amenities by car and bus, as well as a high Bus Accessibility score. High % of homes have private outdoor space (95.3%) and the average distance to the local park, garden or public playing field is just over 500m.

There is a lower % of 16+ population in receipt of Housing Benefits and Single Person Discounts. Digital Vulnerability is high. However only 11.8% of premises are without access to superfast broadband.