

Insch, Oyne & Ythanwells

Intermediate Zone Statistical Summary

2023

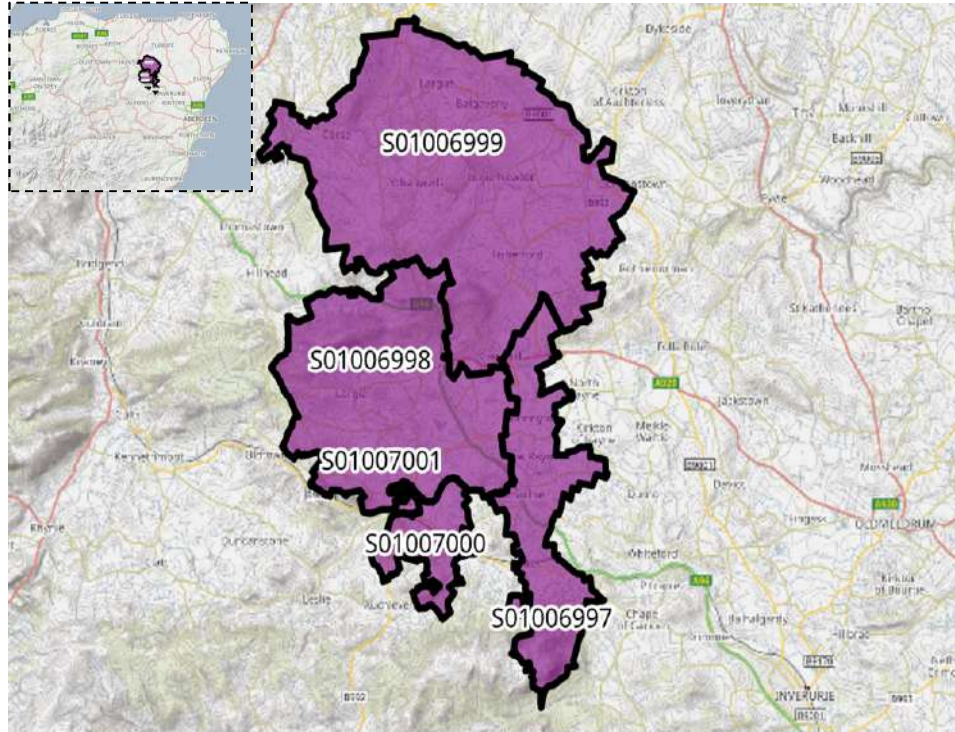


Daniel Stanford

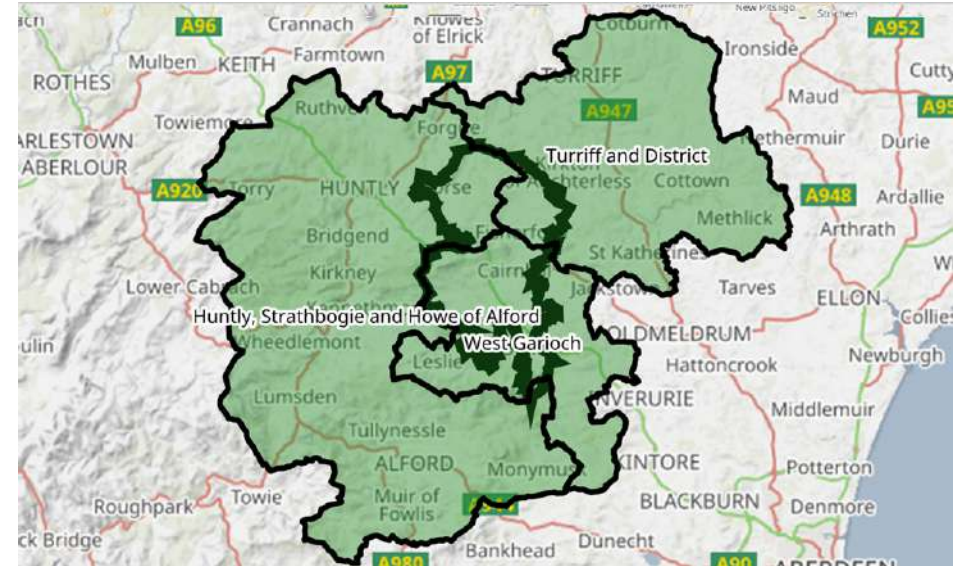


Insch, Oyne & Ythanwells

Data Zones Within the Intermediate Zone



Relevant Multi-Member Wards



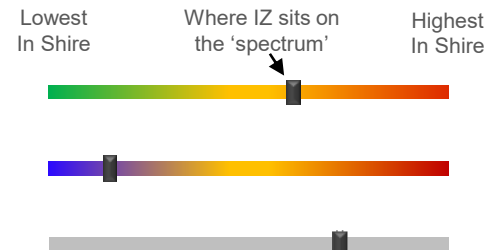
Notes on the Maps

The map on the left shows the location and the geographic area of the Insch, Oyne & Ythanwells Intermediate Zone, which contains five Data Zones. The Intermediate Zone lies across Wards 10, West Garioch, 7, Turriff and District and 14, Huntly, Strathbogie and Howe of Alford.

Spectrum Charts Explained

The following statistical pages frequently utilise spectrum charts as a visual aid to accompany an indicator. They are used to place the relevant Intermediate Zone (IZ) in the context of all other IZs in Aberdeenshire with regards to that indicator.

The charts to the right are examples of the spectrum charts used in this report. The black line represents where the IZ sits in the context of the highest and lowest figures in Aberdeenshire. If the black line is situated towards the left-hand side, the IZ recorded one of the lowest figures in Aberdeenshire. Conversely, if the black line is towards the right-hand side, it recorded one of the highest figures in Aberdeenshire.



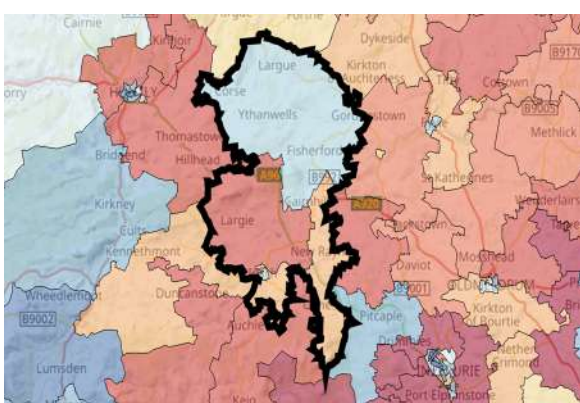
The green/red spectrum charts are the most common type. If the black line is situated towards the red end of the spectrum, it means the figure is objectively worse than most other IZs in Aberdeenshire and *vice versa*.

The blue/red spectrum charts are used in the demographic section to denote high population growth (red) and population decline (blue).

The grey spectrum charts are simply used to denote high and low in the context of Aberdeenshire, where the high / low figure is neither good nor bad. An example would be the proportion of dwellings that fall within Council Tax Bands F-G.

Insch, Oyne and Ythanwells Demographic Data

Map of Insch, Oyne and Ythanwells: Population Change (2014-2021)



Low Growth / Depopulation (Blue) High Growth (Red)

The population of the Insch, Oyne and Ythanwells IZ decreased by 0.5% between 2014 and 2021. This is mainly down to the population shifts in DZ S01006999 where there was a decrease of 44 (5.1%) and DZ S01007001 where there was a decrease of 36 (3.4%).

Compared to 2014 Insch, Oyne and Ythanwells has seen significant increases in the older age groups especially with the 70+ age range with a 45.6% increase with 80–89-year-olds.

At 58.9%, the proportion of Working Age people in the IZ is near the bottom of the scale when looking at the spectrum in an Aberdeenshire context.

At 19.6%, there is a greater proportion of children in the IZ than in most other areas across Aberdeenshire.

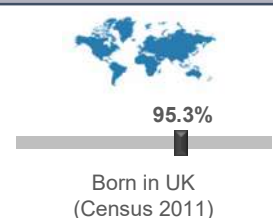
At 21.5% the number of older residents in the IZ is around the average compared to most other areas of Aberdeenshire even with the spikes in population change among the 70+ age range.

In the one DZ that saw a population increase this is mostly down to a surge in the older age groups.

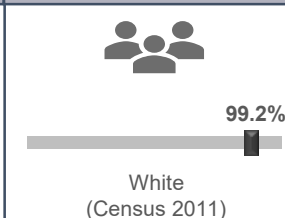
Population Change per Data Zone, 2014 & 2021

Data Zone	2014	2021	% Difference
S01006997	864	854	-1.2%
S01006998	1288	1373	6.6%
S01006999	862	818	-5.1%
S01007000	1010	992	-1.8%
S01007001	1048	1012	-3.4%
Total	5072	5049	-0.5%

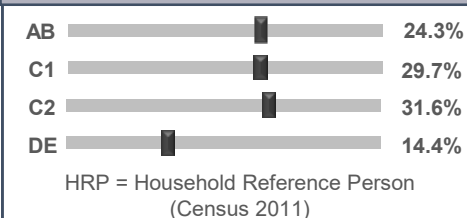
Country of Birth



Ethnicity



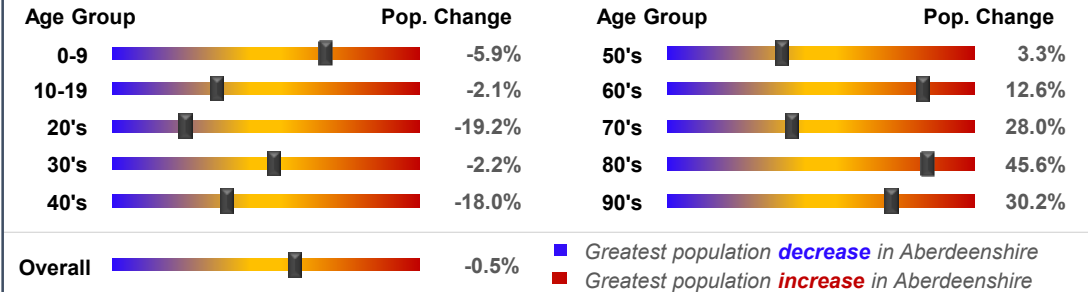
Approximated Social Grade of HRP



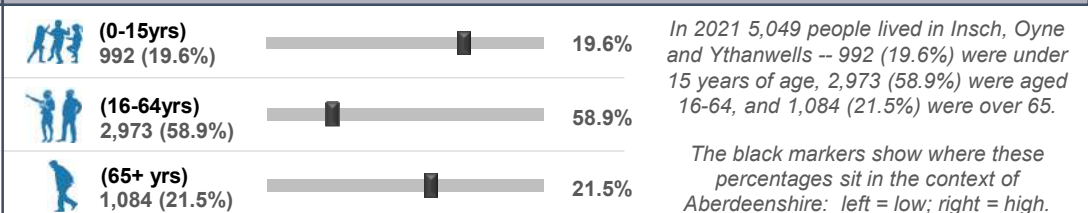
Population per Age Group, Insch, Oyne and Ythanwells, 2014-2021

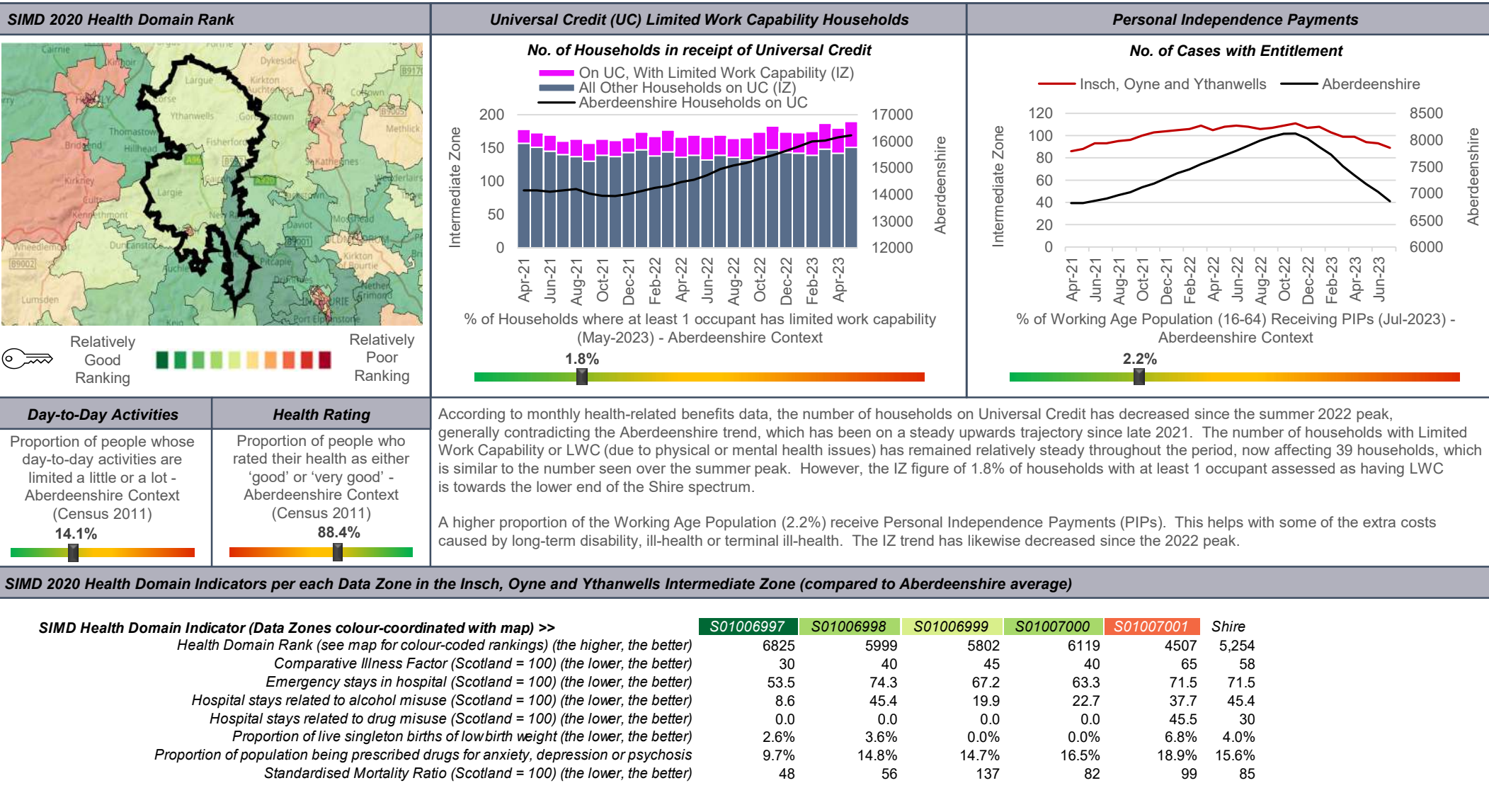


Rate of Population Change per Age Group, 2021 Compared to 2014



Population per Broad Age Group, 2021





Insch, Oyne and Ythanwells Health Data (2 of 2)

Insch, Oyne and Ythanwells's position on the 'Health Spectrum' – Aberdeenshire and Scottish Context (the higher the score, the better)



IZ Score in an Aberdeenshire Context: **80** out of 100

Relatively 'Unhealthy' 0



Relatively 'Healthy' 100

Aberdeenshire context: 20% of IZs in Aberdeenshire have a better rank

IZ Score in a Scottish Context: **73** out of 100

Relatively 'Unhealthy' 0



Relatively 'Healthy' 100

Scottish context: 27% of IZs in Scotland have a better rank

Selection of ScotPHO indicators, Insch, Oyne and Ythanwells IZ compared to Aberdeenshire & Scotland (latest data)

Indicator	Latest Available Figures				IZ Trend	Indicator Measurement
	IZ	IZ's latest figure compared to:				
		Aberdeenshire	Scotland			
Alcohol-related hospital stays	213.2	-19.8%		-65.1%	Up	Rate per 100,000 pop.
All-cause mortality among the 15-44 year olds	17.0	-82.0%		-85.5%	Down	Rate per 100,000 pop.
Babies exclusively breastfed at 6-8 weeks	36.5	-4.0%		4.7%	Up	% of babies with a valid feeding status
Bowel screening uptake	75.8	2.7%		10.2%	Up	% of eligible people (aged 50-74)
Child dental health in primary 1	74.2	-4.5%		1.1%	Down	% of P1 pupils
Child dental health in primary 7	74.0	-5.7%		-1.0%	Up	% of P7 pupils
Child healthy weight in primary 1	71.2	-6.2%		1.5%	Down	% of P1 pupils
Deaths all ages	983.0	-7.1%		-16.7%	Down	Rate per 100,000 pop.
Developmental concerns at 27-30 months	1.9	-1.0%		-12.7%	Down	% of children reviewed
Early deaths from cancer (<75)	80.4	-38.9%		-46.2%	Down	Rate per 100,000 pop.
Early deaths from coronary heart disease (<75)	35.3	-6.5%		-32.8%	Down	Rate per 100,000 pop.
Female life expectancy	82.7	1.0%		2.4%	Down	Life expectancy at birth in years
Healthy birth weight	84.8	1.8%		0.7%	Up	% of all singleton births
Immunisation uptake at 24 months - 6 in 1	98.0	0.3%		1.1%	Down	% of children in relevant age group
Immunisation uptake at 24 months - MMR	96.7	1.9%		2.3%	Down	% of children in relevant age group
Male life expectancy	81.6	5.1%		6.7%	Up	Life expectancy at birth in years
Maternal obesity	26.2	1.7%		0.1%	Up	% of women at antenatal booking
Patients (65+) with multiple A&E hospitalisations	5114.6	-18.7%		-25.1%	Down	Rate per 100,000 pop.
Patients hospitalised with asthma	44.7	39.9%		-34.7%	Up	Rate per 100,000 pop.
Patients hospitalised with COPD	29.8	-74.6%		-85.6%	Down	Rate per 100,000 pop.
Patients hospitalised with coronary heart disease	229.6	-22.0%		-32.8%	Down	Rate per 100,000 pop.
Patients with emergency hospitalisations	4678.2	-11.4%		-35.3%	Down	Rate per 100,000 pop.
Premature births	8.8	-0.5%		0.5%	Down	% of all live births
Uptake of the HPV vaccine in S3 girls	90.6	1.2%		5.8%	Down	% of S3 girls

Based on the 24 health-related indicators in the table, this IZ is situated at the less vulnerable end of the spectrum (80) in an Aberdeenshire context. The IZ fares slightly worse when all IZs in Scotland are taken into consideration, but it is in the top half nationally (73).

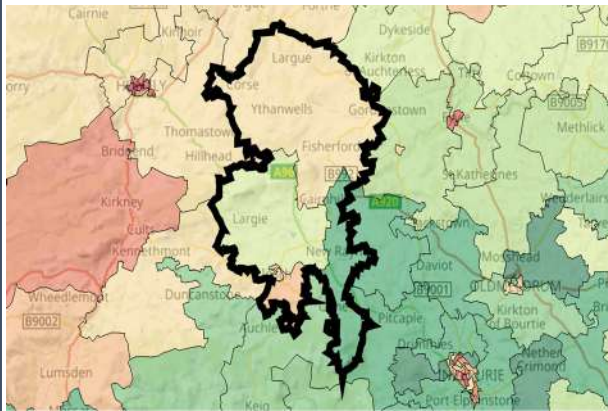
The area compares favourably to most other areas in Scotland in terms of Alcohol-related hospital stays. All-cause mortality among the 15-44-year-olds, Bowel screening uptake, Developmental concerns at 27 – 30 months, Patients (65+) with multiple emergency hospitalisations, Patients hospitalised with COPD and patients with emergency hospitalisations..

Issues that may require further investigation include:
- Premature Births

With regards to each of the indicators listed above the IZ compares less favourably to other areas in Aberdeenshire and, in some instances, Scotland (and/or the trend is worsening).

Insch, Oyne and Ythanwells Economic Data (1 of 3)

Rank of Household Income per Data Zone (2023)



In terms of household income, this IZ is among the most affluent in Aberdeenshire. The median household income in 2023 equated to £43,561 which is £1,805 higher than the Shire average (£41,756).

Median household income ranges from £38,215 in DZ S01007000 to £54,052 in DZ S01006997.

Approximately 4.4% of households in this IZ earn less than £10,000 per year, which is lower-than-average (5.3%). This equates to roughly 96 households.

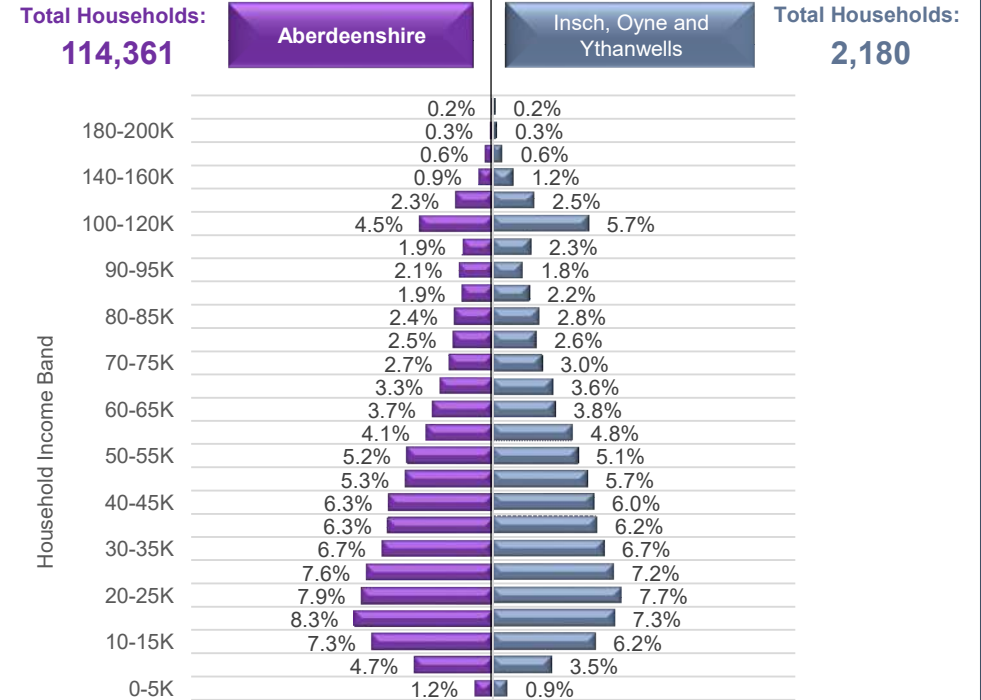
In addition, Approximately 10.5% of households in this IZ earn more than £100,000 per year, which is higher than average (10.1%). This equates to roughly 229 households.



Household Income per Data Zone (2023)

Data Zone	Households	Average Income	Median Income	Lower Quartile Income
S01006997	335	£ 61,981	£ 54,052	£ 32,477
S01006998	601	£ 53,916	£ 46,054	£ 26,879
S01006999	333	£ 47,134	£ 39,916	£ 23,343
S01007000	470	£ 48,014	£ 38,215	£ 20,162
S01007001	441	£ 48,888	£ 40,809	£ 23,446

Household Income per Band, Insch, Oyne and Ythanwells & Aberdeenshire (2023)



© CACI Limited 1996 - 2022 This report shall be used solely for academic, personal and/or non-commercial purposes. The applicable copyright notices can be found at <https://www.caci.co.uk/copyrightnotices.pdf>

Median Household Income (2023)



£43,561

Aberdeenshire: £41,756

£43,561



% of Households Earning Less Than £10k (2023)



<£10K

4.4%

Aberdeenshire: 5.3%

4.4%



% of Households Earning More Than £100k (2023)



>£100K

10.5%

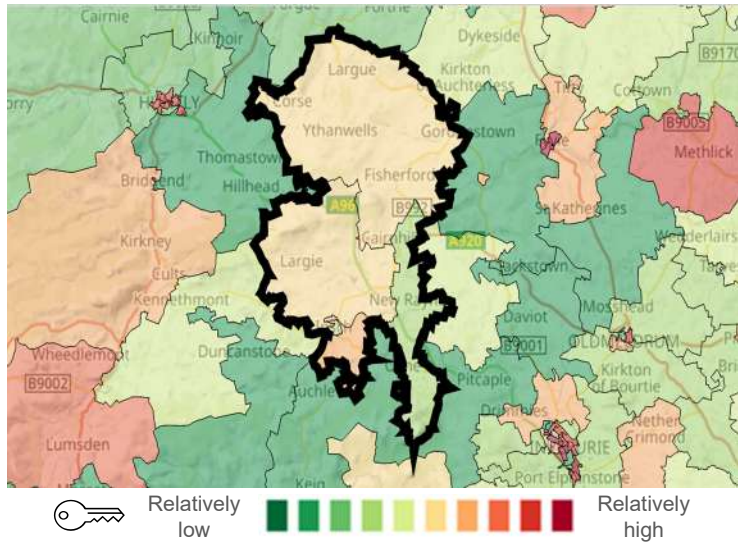
Aberdeenshire: 10.1%

10.5%

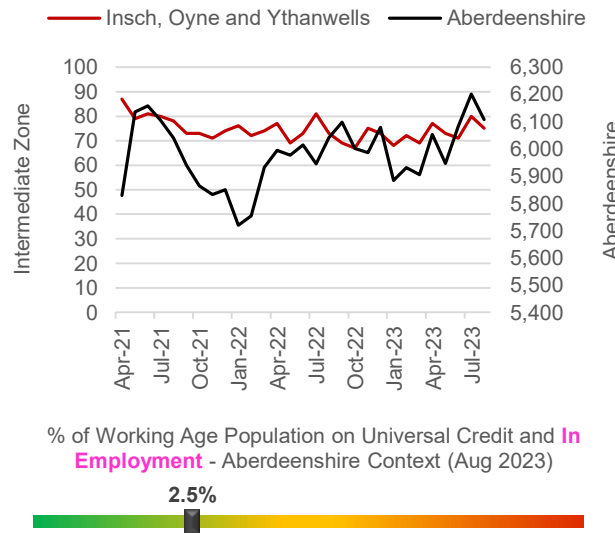


Insch, Oyne and Ythanwells Economic Data (2 of 3)

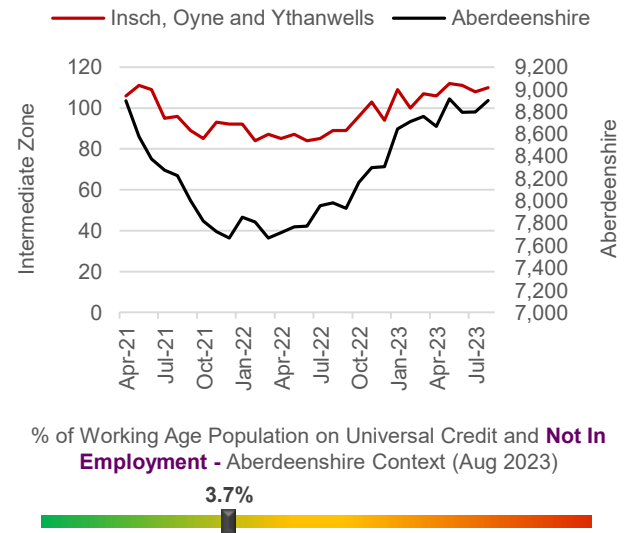
Latest Unemployment Rate - Ranking per Data Zone



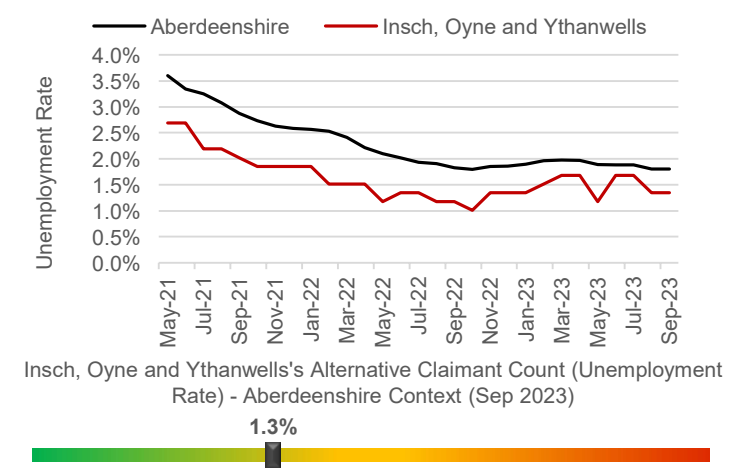
People on Universal Credit - In Employment



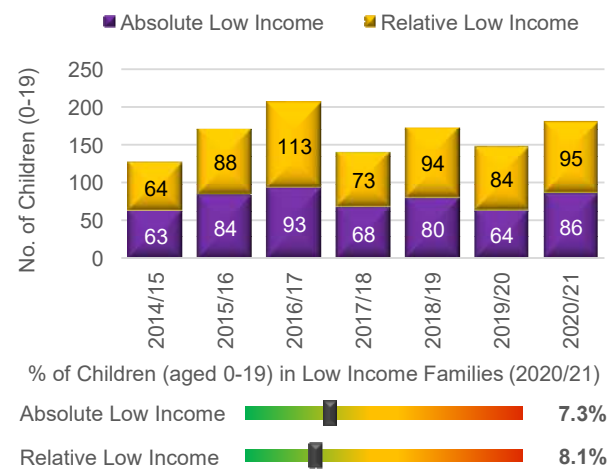
People on Universal Credit - Not In Employment



Alternative Claimant Count - Effective 'Unemployment Rate'



Children in Low Income Families



Summary

The number of people claiming Universal Credit (UC) - who are also in employment - has remained relatively steady over the last few months, contrary to the Shire-wide trend, which has increased. Latest figures show 2.5% of people aged 16-64 (who also have jobs) are claiming UC. This is towards the lower end of the spectrum in a Shire context. A similar picture emerges in relation to people on UC and not in employment.

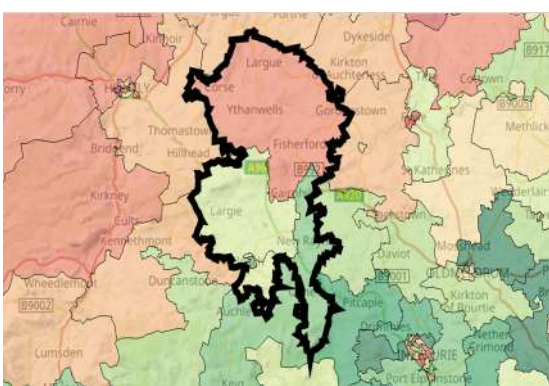
Like Aberdeenshire, the unemployment rate in the IZ has fallen substantially since the September 2020 peak of 3.8%. Latest data suggests approximately 1.3% of the Working Age population is currently out-of-work, which is slightly lower than the Aberdeenshire rate (1.8%).

Children living in low-income families are relatively uncommon. However, recent increases suggest the issue may be coming more to the fore over recent years, particularly since 2020/21.

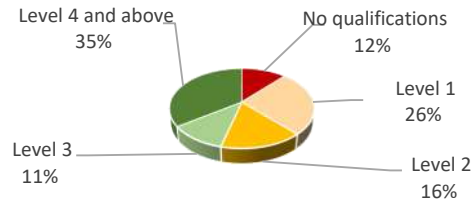
Economic Indicators

Insch, Oyne and Ythanwells Economic Data (3 of 3)

People With No Qualifications, Census 2011



% of Employees per Qualification Type



Summary

The employment numbers per broad industrial group relate to the kind of jobs within the area, which may be filled by those living outwith the IZ.

Major industries in terms of jobs in the area include the Health sector, the Professional sector, Construction and the Education sector.

There has been a large growth in Agriculture and Manufacturing sector. Jobs in this latter industry have doubled since 2020.

The growth in these type of jobs, has meant a 8% increase in jobs across the IZ between 2020 and 2022, suggesting a good degree of resilience post-Covid.

The area also appears to have attracted a greater number of larger enterprises over the most recent year (Companies with a Turnover between £200k – 999k).

Approximate Employment Count per Broad Industrial Group, Insch, Oyne and Ythanwells, 2020-22

Broad Industrial Group	2020	2021	2022	2020-22 % Diff.
Agriculture, forestry & fishing	15	20	35	133%
Mining, quarrying & utilities	30	30	40	33%
Manufacturing	50	50	75	50%
Construction	125	175	175	40%
Motor trades	15	15	25	67%
Wholesale	50	75	45	-10%
Retail	125	125	75	-40%
Transport & storage (inc postal)	75	50	50	-33%
Accommodation & food services	50	75	75	50%
Information & communication	10	0	0	-100%
Financial & insurance	10	0	20	100%
Property	35	40	30	-14%
Professional, scientific & technical	175	150	200	14%
Business administration & support services	75	75	100	33%
Public administration & defence	10	10	10	0%
Education	125	125	100	-20%
Health	200	200	200	0%
Arts, entertainment, recreation & other services	10	15	20	100%
Total	1,185	1,230	1,275	8%

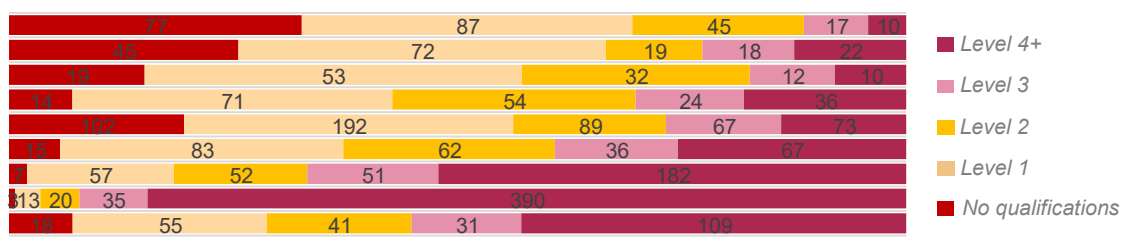
Approximate Number of Enterprises per Turnover Band (£), Insch, Oyne and Ythanwells, 2021-23

Turnover	2021	2022	2023	2021-23 % Diff.
£1m+	10	0	5	-50%
£500-999k	20	10	25	25%
£200-499k	30	40	40	33%
£100-199k	115	95	95	-17%
£50-99k	85	70	60	-29%
£0-49k	65	75	65	0%

Employees per Occupation Type, Census 2011

Elementary occupations	236
Process, plant and machine operatives	176
Sales and customer service occupations	126
Caring, leisure and other service occupations	199
Skilled trades occupations	523
Administrative and secretarial occupations	263
Associate professional and technical...	349
Professional occupations	461
Managers, directors and senior officials	254

Employees per Qualification & Occupation Type, Census 2011



Insch, Oyne and Ythanwells Housing Data



Relatively sparse / rural

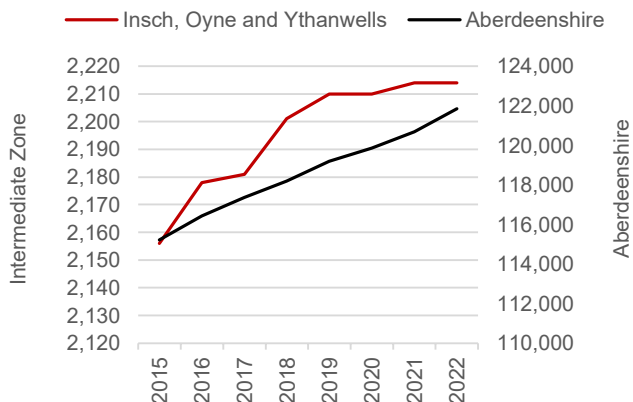
Dwellings per Hectare (2022)

0.13



Relatively dense / urban

Number of Dwellings, 2015-22



% Growth in No. of Dwellings 2015-22 (Aberdeenshire Context)

2.9%

Summary

At 0.13 dwellings per hectare, this IZ is in the lower range of the spectrum between the rural and urban extremes.

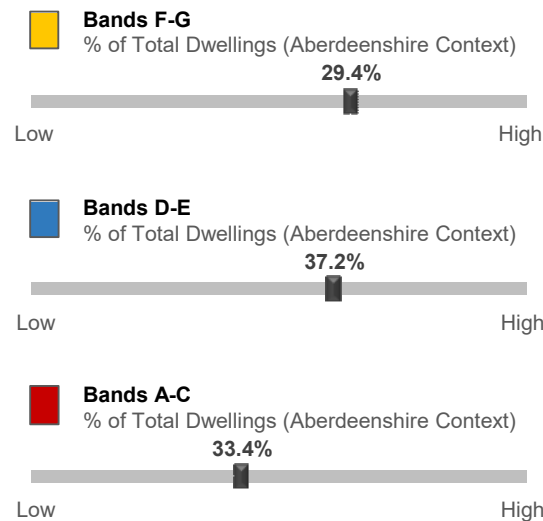
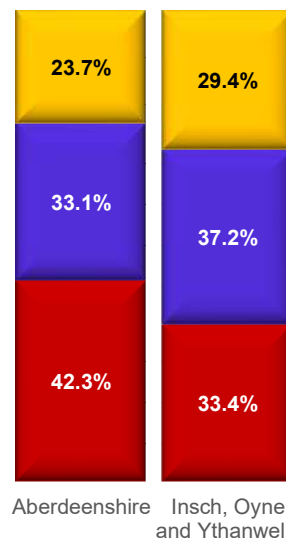
The number of dwellings in the IZ has increased by 2.9% since 2015, which is towards the middle of the spectrum in an Aberdeenshire context.

House building in the area has been on steady increase since 2015 – 2021 and has since plateaued.

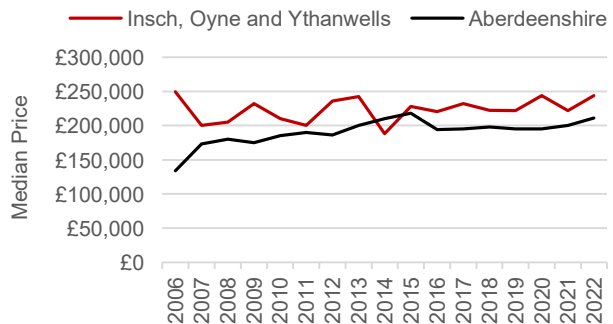
A relatively large proportion of the dwellings in this IZ (37.2%) fall within Council Tax Bands D-E. This puts the IZ towards the higher end of the spectrum. Relatively few properties fall within Bands F-G (29.4%).

The median house price is £243,750 which is significantly higher £32,755 higher than the Aberdeenshire average (£210,995).

Proportion of Dwellings per Council Tax Band, 2022



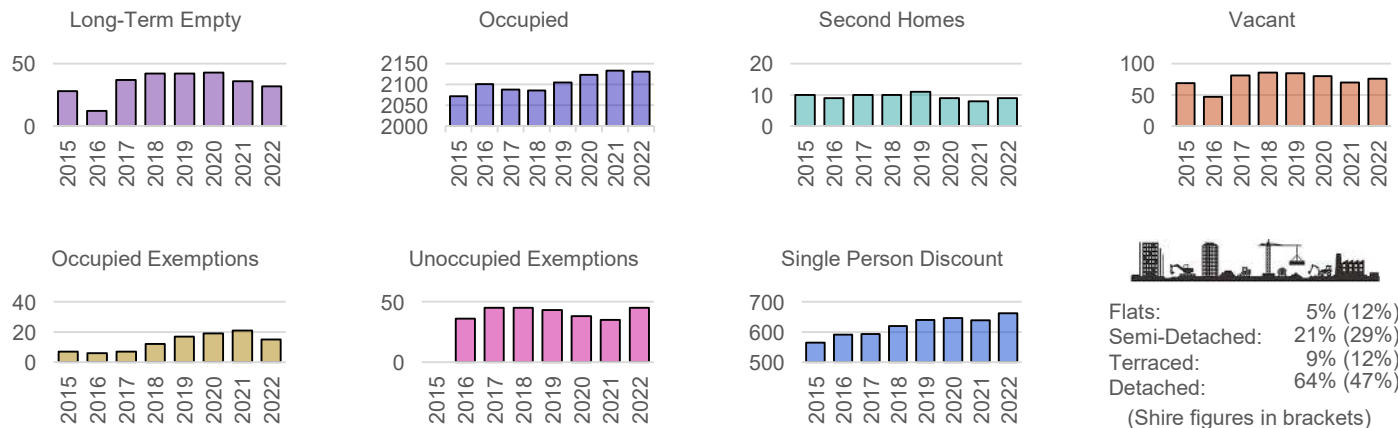
Median Residential House Prices (Sales), 2006-22



2022 Median House Price (Aberdeenshire Context)

£243,750

Housing Types, 2015-22 (Data on Flats, etc., relate to 2017 - the latest year for which data are available)



Flats: 5% (12%)
 Semi-Detached: 21% (29%)
 Terraced: 9% (12%)
 Detached: 64% (47%)
 (Shire figures in brackets)

Other Indicators

Insch, Oyne and Ythanwells Other Socio-Economic Data

