

Portsoy, Fordyce and Cornhill

Intermediate Zone Statistical Summary

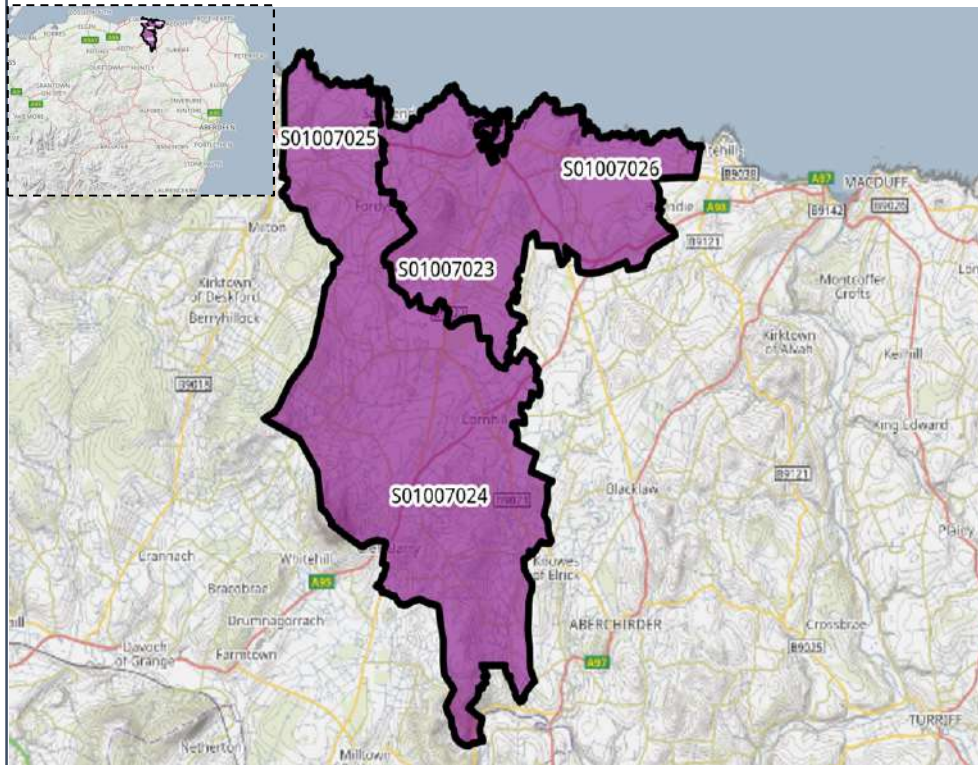
2023

Daniel Stanford

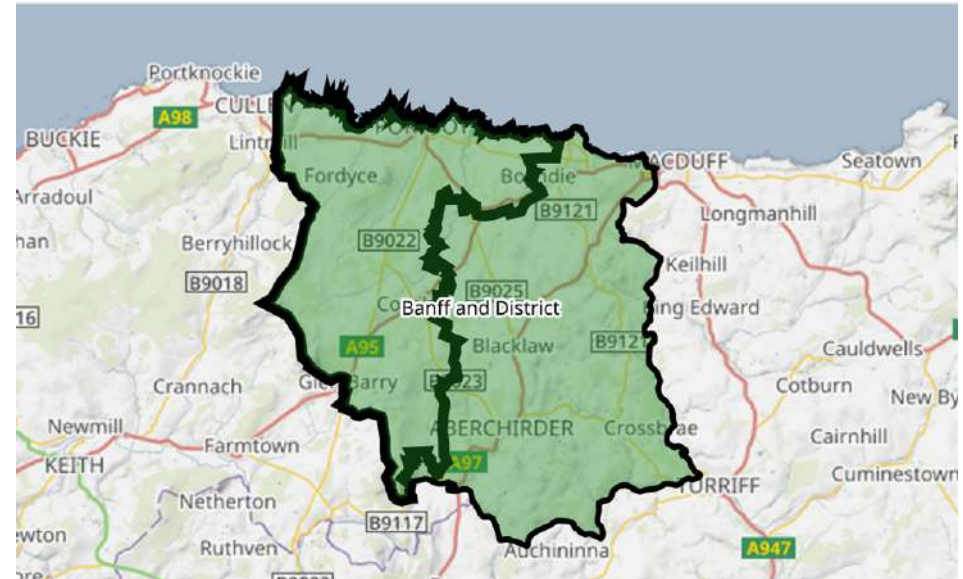


Portsoy, Fordyce and Cornhill

Data Zones Within the Intermediate Zone



Relevant Multi-Member Wards



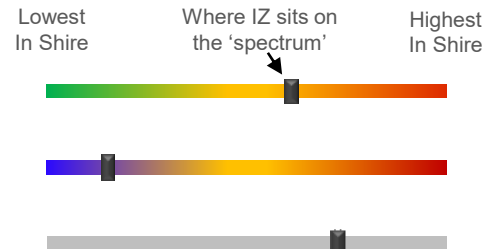
Notes on the Maps

The Map on the left shows the location and geographic area of the Aberchirder and Whitehills Intermediate Zone which contains five Data Zones. The Intermediate Zone lies mostly within /ward 1, Banff and District.

Spectrum Charts Explained

The following statistical pages frequently utilise spectrum charts as a visual aid to accompany an indicator. They are used to place the relevant Intermediate Zone (IZ) in the context of all other IZs in Aberdeenshire with regards to that indicator.

The charts to the right are examples of the spectrum charts used in this report. The black line represents where the IZ sits in the context of the highest and lowest figures in Aberdeenshire. If the black line is situated towards the left-hand side, the IZ recorded one of the lowest figures in Aberdeenshire. Conversely, if the black line is towards the right-hand side, it recorded one of the highest figures in Aberdeenshire.



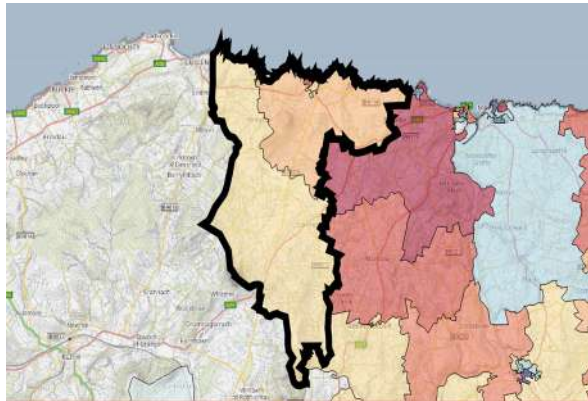
The green/red spectrum charts are the most common type. If the black line is situated towards the red end of the spectrum, it means the figure is objectively worse than most other IZs in Aberdeenshire and *vice versa*.

The blue/red spectrum charts are used in the demographic section to denote high population growth (red) and population decline (blue).

The grey spectrum charts are simply used to denote high and low in the context of Aberdeenshire, where the high / low figure is neither good nor bad. An example would be the proportion of dwellings that fall within Council Tax Bands F-G.

Portsoy, Fordyce and Cornhill Demographic Data

Map of Portsoy, Fordyce and Cornhill: Population Change (2014-2021)



The population of the Portsoy, Fordyce and Cornhill IZ increased by 1.2% between 2014 and 2021. This is mainly down to the population spike in DZ S01007025 where there was an increase of 87 (10.5%).

Compared to 2014 Portsoy, Fordyce and Cornhill has seen significant increases in the older age groups especially with the 70+ age range with a 11.6% increase with 70–79-year-olds.

At 57.2%, the proportion of Working Age people in the IZ is well below the average when looking at the spectrum in an Aberdeenshire context.

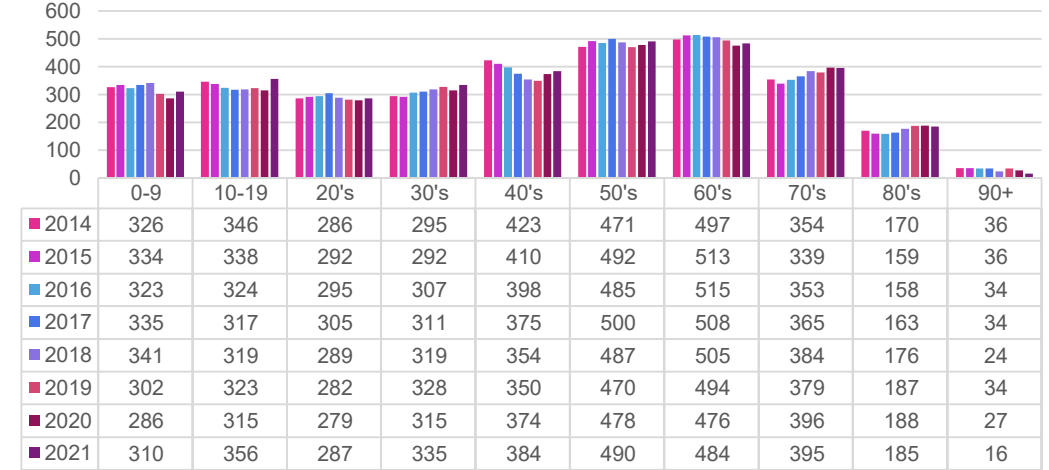
At 16.9%, there is a lesser proportion of children in the IZ is than in most other areas across Aberdeenshire.

At 25.9% the number of older residents in the IZ is much higher than most other areas of Aberdeenshire with the spikes in population change among the 70+ age range.

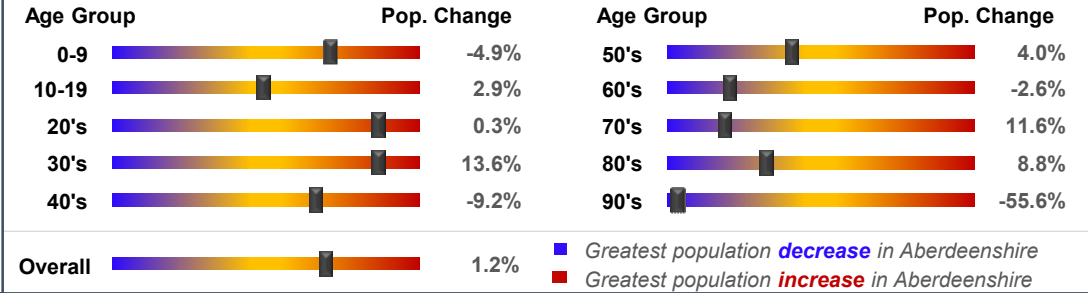
Population Change per Data Zone, 2014 & 2021

Data Zone	2014	2021	% Difference
S01007023	476	470	-1.3%
S01007024	1009	986	-2.3%
S01007025	828	915	10.5%
S01007026	891	871	-2.2%
Total	3204	3242	1.2%

Population per Age Group, Portsoy, Fordyce and Cornhill, 2014-2021



Rate of Population Change per Age Group, 2021 Compared to 2014

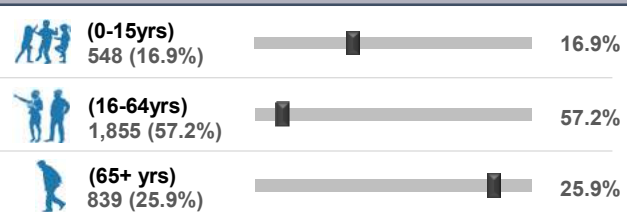
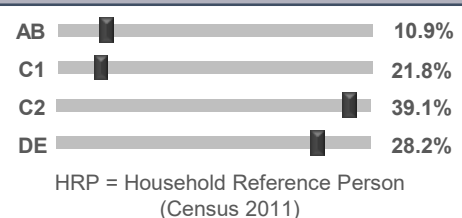
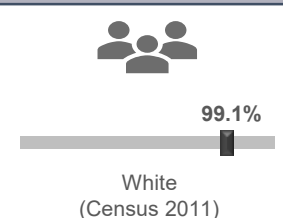


Country of Birth

Ethnicity

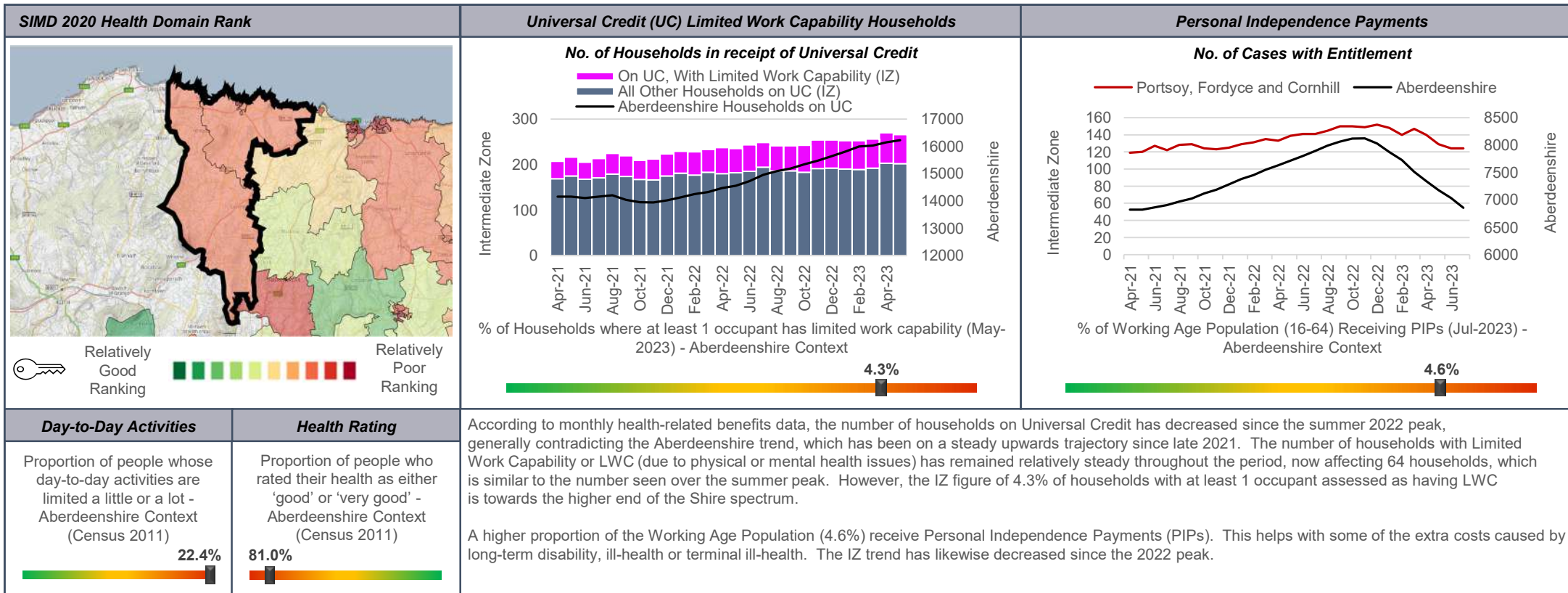
Approximated Social Grade of HRP

Population per Broad Age Group, 2021



In 2021 3,242 people lived in Portsoy, Fordyce and Cornhill -- 548 (16.9%) were under 15 years of age, 1,855 (57.2%) were aged 16-64, and 839 (25.9%) were over 65.

The black markers show where these percentages sit in the context of Aberdeenshire: left = low; right = high.

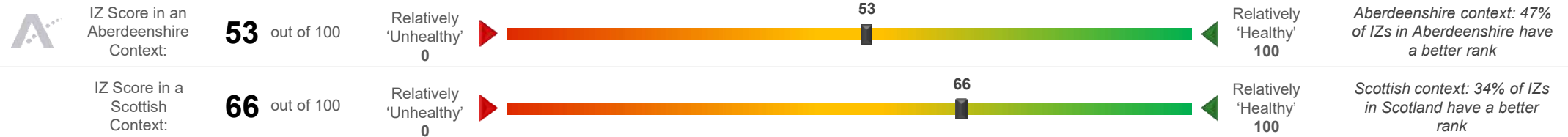


SIMD 2020 Health Domain Indicators per each Data Zone in the Portsoy, Fordyce and Cornhill Intermediate Zone (compared to Aberdeenshire average)

SIMD Health Domain Indicator (Data Zones colour-coordinated with map) >>	S01007023	S01007024	S01007025	S01007026	Shire
Health Domain Rank (see map for colour-coded rankings) (the higher, the better)	4308	4144	2846	4210	5,254
Comparative Illness Factor (Scotland = 100) (the lower, the better)	90	75	100	70	58
Emergency stays in hospital (Scotland = 100) (the lower, the better)	99.3	85.2	96.4	74.1	71.5
Hospital stays related to alcohol misuse (Scotland = 100) (the lower, the better)	23.5	10.3	163.2	48.9	45.4
Hospital stays related to drug misuse (Scotland = 100) (the lower, the better)	0.0	50.4	81.8	20.4	30
Proportion of live singleton births of lowbirth weight (the lower, the better)	0.0%	5.9%	0.0%	3.4%	4.0%
Proportion of population being prescribed drugs for anxiety, depression or psychosis	13.4%	17.1%	21.6%	20.5%	15.6%
Standardised Mortality Ratio (Scotland = 100) (the lower, the better)	85	152	106	116	85

Portsoy, Fordyce and Cornhill Health Data (2 of 2)

Portsoy, Fordyce and Cornhill's position on the 'Health Spectrum' – Aberdeenshire and Scottish Context (the higher the score, the better)



Selection of ScotPHO indicators, Portsoy, Fordyce and Cornhill IZ compared to Aberdeenshire & Scotland (latest data)

Indicator	Latest Available Figures				IZ Trend	Indicator Measurement
	IZ	IZ's latest figure compared to:				
		Aberdeenshire	Scotland			
Alcohol-related hospital stays	148.7	-44.1%		-75.7%	Down	Rate per 100,000 pop.
All-cause mortality among the 15-44 year olds	77.1	-18.3%		-34.2%	Down	Rate per 100,000 pop.
Babies exclusively breastfed at 6-8 weeks	29.2	-11.4%		-2.7%	Up	% of babies with a valid feeding status
Bowel screening uptake	70.7	-2.4%		5.1%	Up	% of eligible people (aged 50-74)
Child dental health in primary 1	81.6	2.8%		8.5%	Up	% of P1 pupils
Child dental health in primary 7	86.5	6.8%		11.5%	Up	% of P7 pupils
Child healthy weight in primary 1	86.7	9.3%		16.9%	Down	% of P1 pupils
Deaths all ages	1463.6	38.2%		24.0%	Up	Rate per 100,000 pop.
Developmental concerns at 27-30 months	9.6	6.8%		-4.9%	Down	% of children reviewed
Early deaths from cancer (<75)	110.1	-16.4%		-26.4%	Down	Rate per 100,000 pop.
Early deaths from coronary heart disease (<75)	40.1	6.1%		-23.8%	Up	Rate per 100,000 pop.
Female life expectancy	80.7	-1.4%		0.0%	Down	Life expectancy at birth in years
Healthy birth weight	89.5	6.4%		5.3%	Up	% of all singleton births
Immunisation uptake at 24 months - 6 in 1	96.2	-1.6%		-0.8%	Down	% of children in relevant age group
Immunisation uptake at 24 months - MMR	93.7	-1.1%		-0.7%	Down	% of children in relevant age group
Male life expectancy	78.6	1.2%		2.7%	Up	Life expectancy at birth in years
Maternal obesity	20.0	-4.5%		-6.1%	Down	% of women at antenatal booking
Patients (65+) with multiple A&E hospitalisations	5638.8	-10.4%		-17.4%	Up	Rate per 100,000 pop.
Patients hospitalised with asthma	15.6	-51.0%		-77.1%	Down	Rate per 100,000 pop.
Patients hospitalised with COPD	218.6	86.7%		5.4%	Up	Rate per 100,000 pop.
Patients hospitalised with coronary heart disease	198.1	-32.7%		-42.0%	Down	Rate per 100,000 pop.
Patients with emergency hospitalisations	5804.5	9.9%		-19.8%	Up	Rate per 100,000 pop.
Premature births	5.0	-4.3%		-3.2%	Down	% of all live births
Uptake of the HPV vaccine in S3 girls	75.0	-14.4%		-9.8%	Down	% of S3 girls

Based on the 24 health-related indicators in the table, this IZ is situated at the less vulnerable end of the spectrum (53) in an Aberdeenshire context. The IZ fares slightly better when all IZs in Scotland are taken into consideration as it is in the top half nationally (66).

The area compares favourably to most other areas in Scotland in terms of Patients hospitalised with asthma, Premature Births, Patients hospitalised with coronary heart disease..

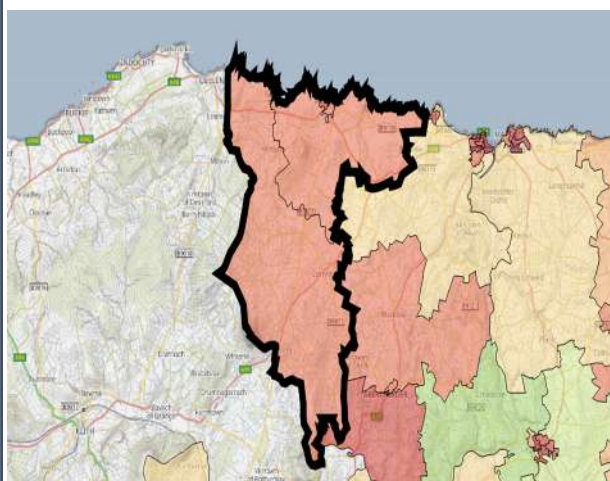
Issues that may require further investigation include:

- Uptake of the HPV vaccine in S3 girls
- Early deaths from Coronary heart disease

With regards to each of the indicators listed above the IZ compares less favourably to other areas in Aberdeenshire and, in some instances, Scotland (and/or the trend is worsening).

Portsoy, Fordyce and Cornhill Economic Data (1 of 3)

Rank of Household Income per Data Zone (2023)



In terms of household income, this IZ is among the poorest in Aberdeenshire. The median household income in 2023 equated to £31,859 which is £9,897 lower than the Shire average (£41,756).

Median household income ranges from £28,646 in DZ S01007024 to £34,467 in DZ S01007024.

Approximately 7.9% of households in this IZ earn less than £10,000 per year, which is higher-than-average (5.3%). This equates to roughly 118 households.

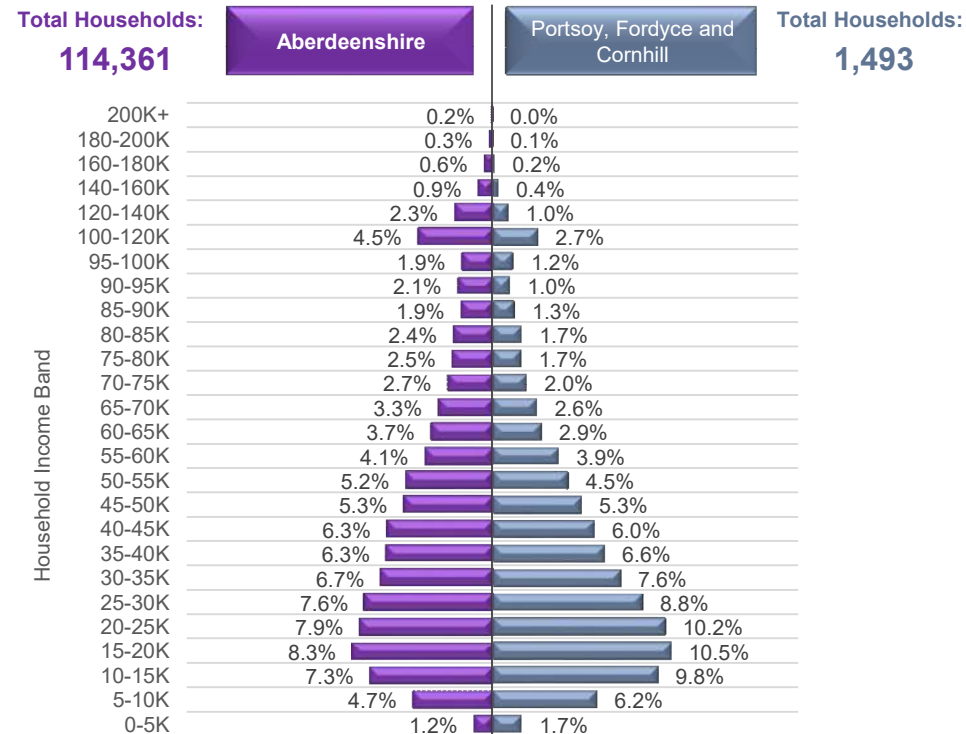
In addition, Approximately 4.3% of households in this IZ earn more than £100,000 per year, which is less than average (10.1%). This equates to roughly 64 households.



Household Income per Data Zone (2023)

Data Zone	Households	Average Income	Median Income	Lower Quartile Income
S01007023	205	£ 41,525	£ 34,044	£ 20,138
S01007024	416	£ 41,940	£ 34,467	£ 20,220
S01007025	440	£ 35,677	£ 28,646	£ 16,800
S01007026	432	£ 39,460	£ 31,822	£ 18,096

Household Income per Band, Portsoy, Fordyce and Cornhill & Aberdeenshire (2023)



© CACI Limited 1996 - 2022 This report shall be used solely for academic, personal and/or non-commercial purposes. The applicable copyright notices can be found at <https://www.caci.co.uk/copyrightnotices.pdf>

Median Household Income (2023)



£31,859

Aberdeenshire: £41,756

£31,859



% of Households Earning Less Than £10k (2023)



<£10K

7.9%

Aberdeenshire: 5.3%

7.9%



% of Households Earning More Than £100k (2023)



>£100K

4.3%

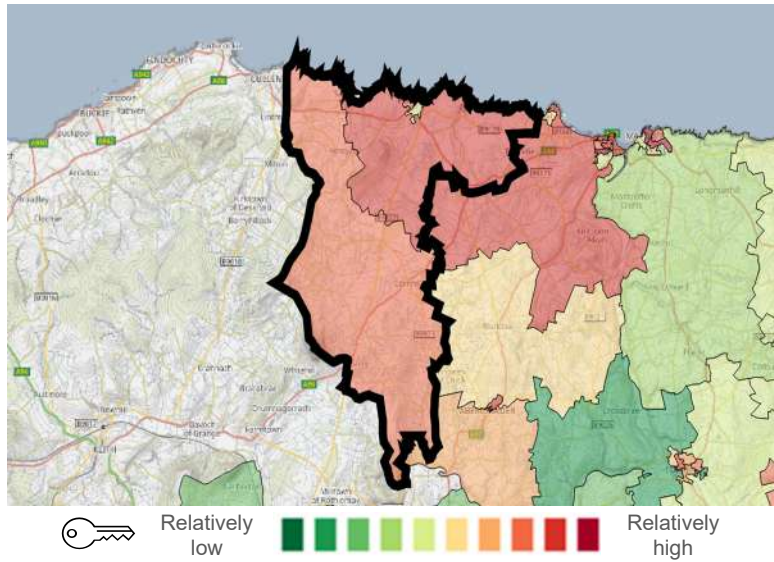
Aberdeenshire: 10.1%

4.3%

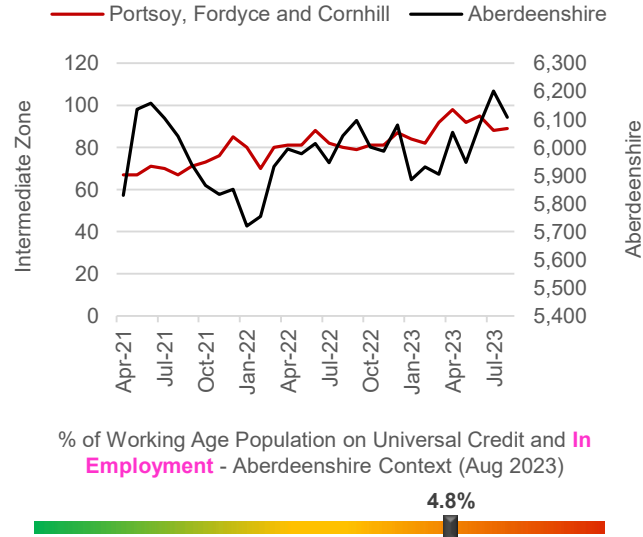


Portsoy, Fordyce and Cornhill Economic Data (2 of 3)

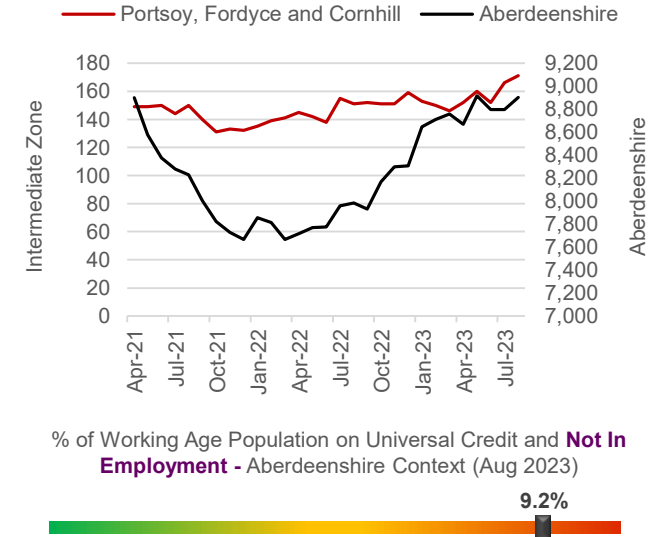
Latest Unemployment Rate - Ranking per Data Zone



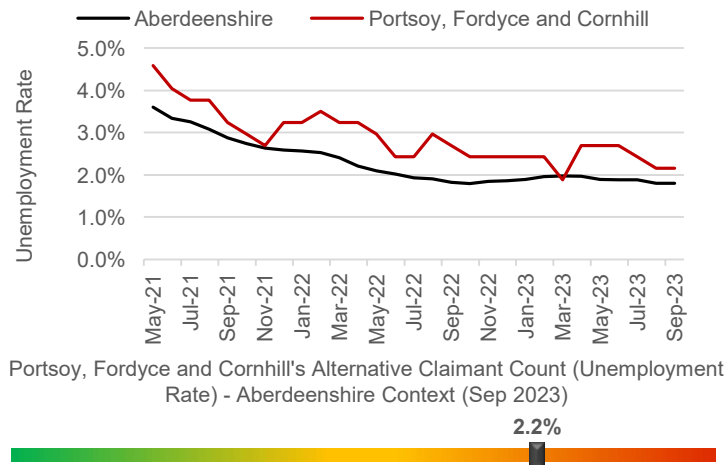
People on Universal Credit - In Employment



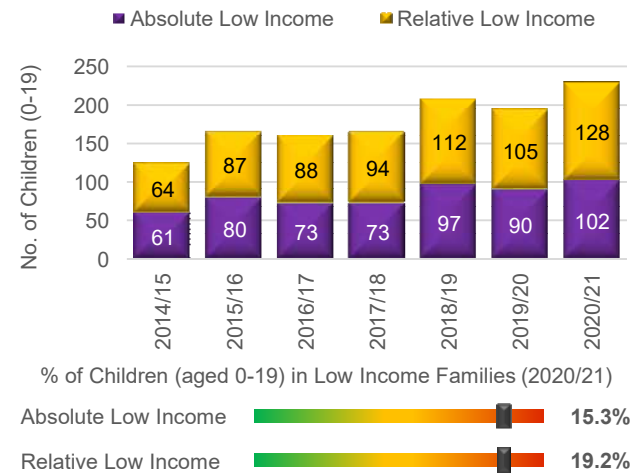
People on Universal Credit - Not In Employment



Alternative Claimant Count - Effective 'Unemployment Rate'



Children in Low Income Families



Summary

The number of people claiming Universal Credit (UC) - who are also in employment - has remained relatively steady over the last few months, contrary to the Shire-wide trend, which has increased. Latest figures show 4.8% of people aged 16-64 (who also have jobs) are claiming UC. This is towards the higher end of the spectrum in a Shire context. A similar picture emerges in relation to people on UC and not in employment.

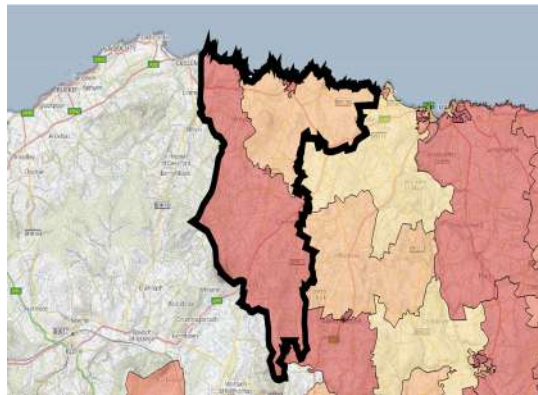
Like Aberdeenshire, the unemployment rate in the IZ has fallen substantially since the September 2020 peak of 3.8%. Latest data suggests approximately 2.2% of the Working Age population is currently out-of-work, which is slightly higher than the Aberdeenshire rate (1.8%).

Children living in low-income families are relatively uncommon. However, recent increases suggest the issue may be coming more to the fore over recent years, particularly since 2020/21.

Economic Indicators

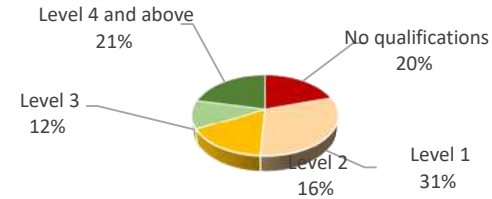
Portsoy, Fordyce and Cornhill Economic Data (3 of 3)

People With No Qualifications, Census 2011



Relatively low Relatively high

% of Employees per Qualification Type



Summary

The employment numbers per broad industrial group relate to the kind of jobs within the area, which may be filled by those living outwith the IZ.

Major industries in terms of jobs in the area include the Manufacturing sector, the Professional sector, Construction and the Health sector.

There has been a large growth in Accommodation & Food Services sector. Jobs in this industry have increased by 88% since 2020.

Even with the growth in these type of jobs, There has been a 5% decrease in jobs across the IZ between 2020 and 2022, suggesting the area is still feeling the effects post-Covid.

The area also appears to have attracted a greater number of larger enterprises over the most recent year (i.e. companies with sales in excess of £1 million).

Approximate Employment Count per Broad Industrial Group, Portsoy, Fordyce and Cornhill, 2020-22

Broad Industrial Group	2020	2021	2022	2020-22 % Diff.
Agriculture, forestry & fishing	15	25	20	33%
Mining, quarrying & utilities	10	15	15	50%
Manufacturing	200	175	150	-25%
Construction	175	225	200	14%
Motor trades	30	30	20	-33%
Wholesale	40	10	50	25%
Retail	50	50	45	-10%
Transport & storage (inc postal)	75	75	75	0%
Accommodation & food services	40	35	75	88%
Information & communication	0	0	0	0%
Financial & insurance	0	0	0	0%
Property	0	0	0	0%
Professional, scientific & technical	100	75	100	0%
Business administration & support services	40	50	45	13%
Public administration & defence	10	10	10	0%
Education	50	50	50	0%
Health	200	150	125	-38%
Arts, entertainment, recreation & other services	10	10	10	0%
Total	1,045	985	990	-5%

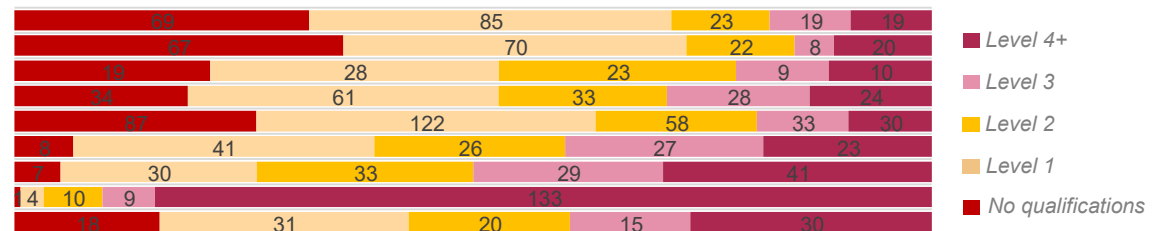
Approximate Number of Enterprises per Turnover Band (£), Portsoy, Fordyce and Cornhill, 2021-23

Turnover	2021	2022	2023	2021-23 % Diff.
£1m+	5	5	10	100%
£500-999k	10	10	10	0%
£200-499k	15	20	5	-67%
£100-199k	35	50	50	43%
£50-99k	25	15	25	0%
£0-49k	35	35	30	-14%

Employees per Occupation Type, Census 2011

Elementary occupations	215
Process, plant and machine operatives	187
Sales and customer service occupations	89
Caring, leisure and other service occupations	180
Skilled trades occupations	330
Administrative and secretarial occupations	125
Associate professional and technical...	140
Professional occupations	157
Managers, directors and senior officials	114

Employees per Qualification & Occupation Type, Census 2011



Housing Indicators

Portsoy, Fordyce and Cornhill Housing Data



Relatively sparse / rural

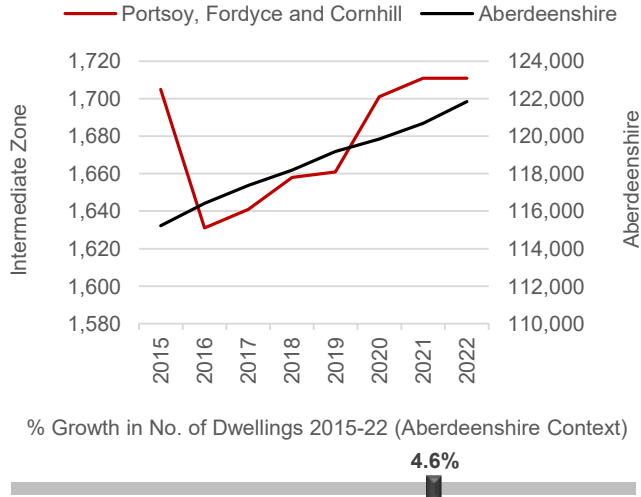
Dwellings per Hectare (2022)

0.15



Relatively dense / urban

Number of Dwellings, 2015-22



Summary

At 0.15 dwellings per hectare, this IZ is in the lower range of the spectrum between the rural and urban extremes.

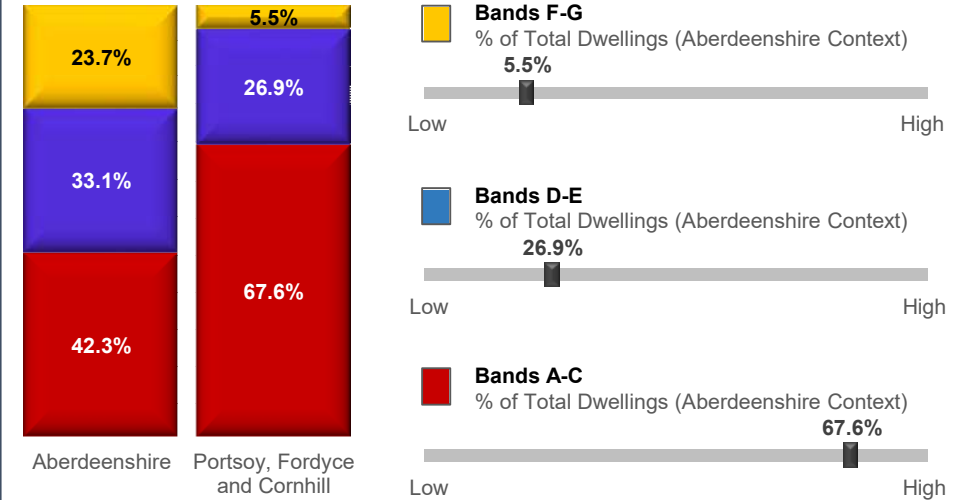
The number of dwellings in the IZ has increased by 4.6% since 2015, which is towards the higher end of the spectrum in an Aberdeenshire context.

House building in the area has been on steady increase since 2015 – 2021 and has since plateaued.

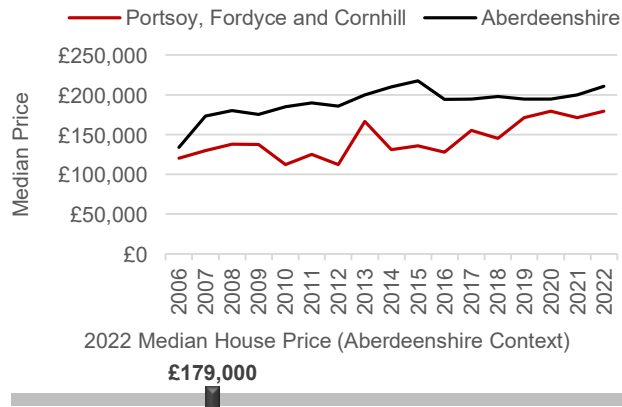
A relatively large proportion of the dwellings in this IZ (67.6%) fall within Council Tax Bands A-C. This puts the IZ towards the higher end of the spectrum. Relatively few properties fall within Bands F-G (5.5%).

The median house price is £179,000 which is significantly lower £31,995 lower than the Aberdeenshire average (£210,995).

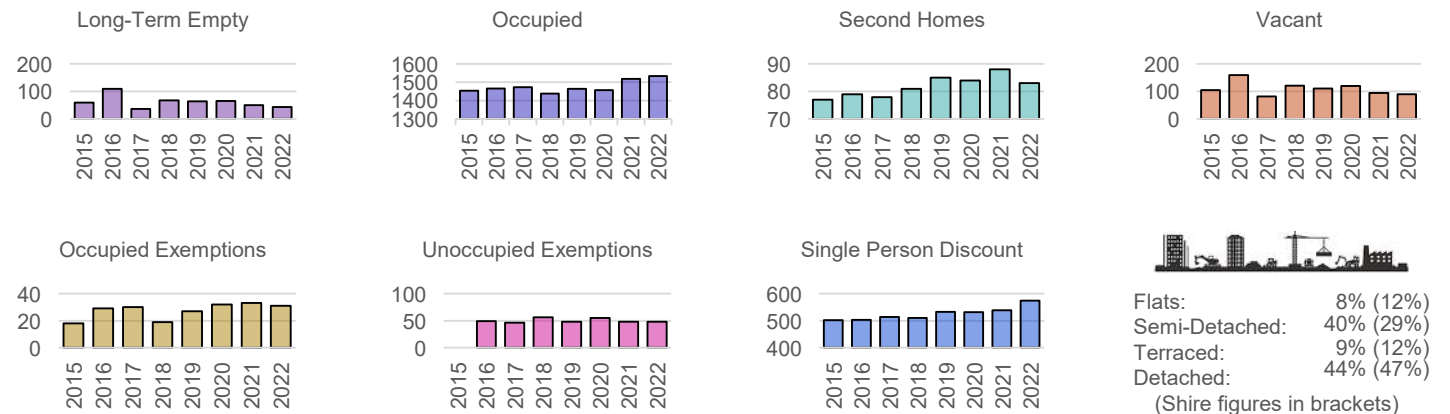
Proportion of Dwellings per Council Tax Band, 2022



Median Residential House Prices (Sales), 2006-22

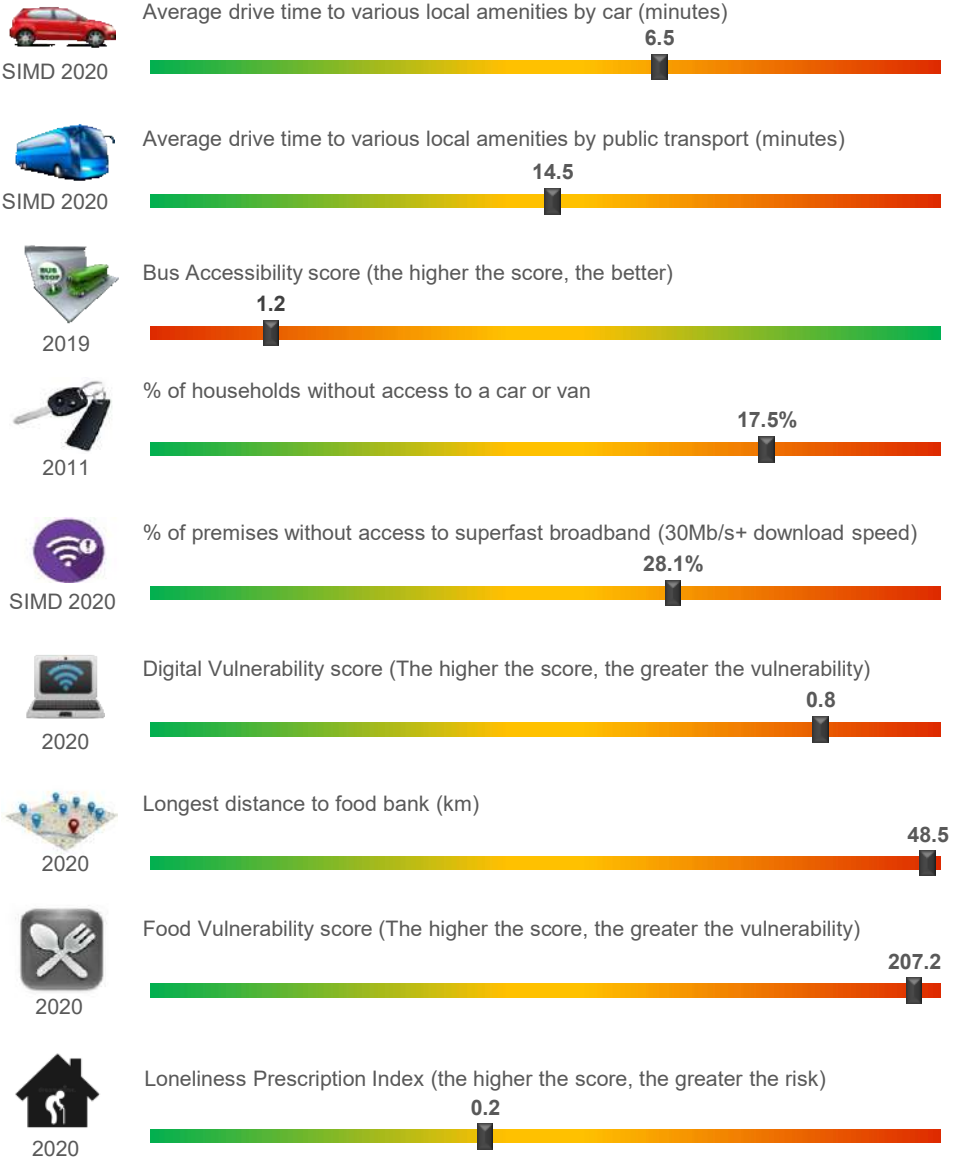


Housing Types, 2015-22 (Data on Flats, etc., relate to 2017 - the latest year for which data are available)

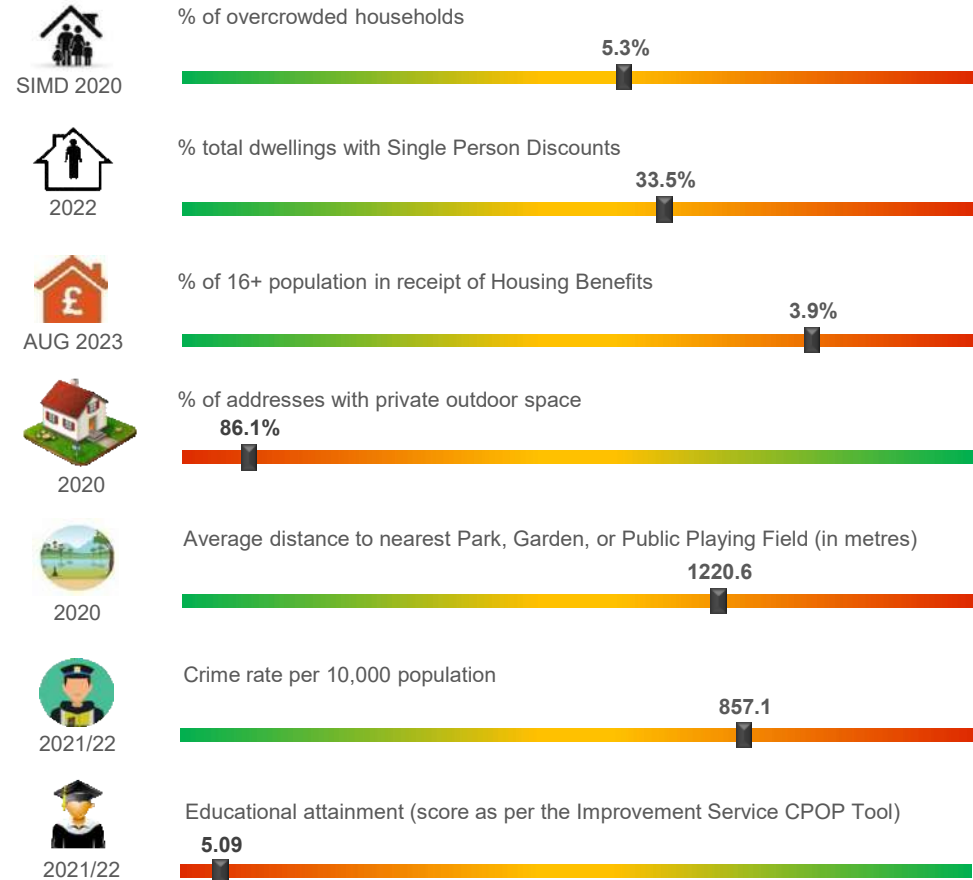


Portsoy, Fordyce and Cornhill Other Socio-Economic Data

Geographic Access / Digital Connectivity / Food Vulnerability / Loneliness Proxy



Housing / Environment / Crime Rate / Educational Attainment



Summary

Text here...