

Cruden

Intermediate Zone Statistical Summary

2023

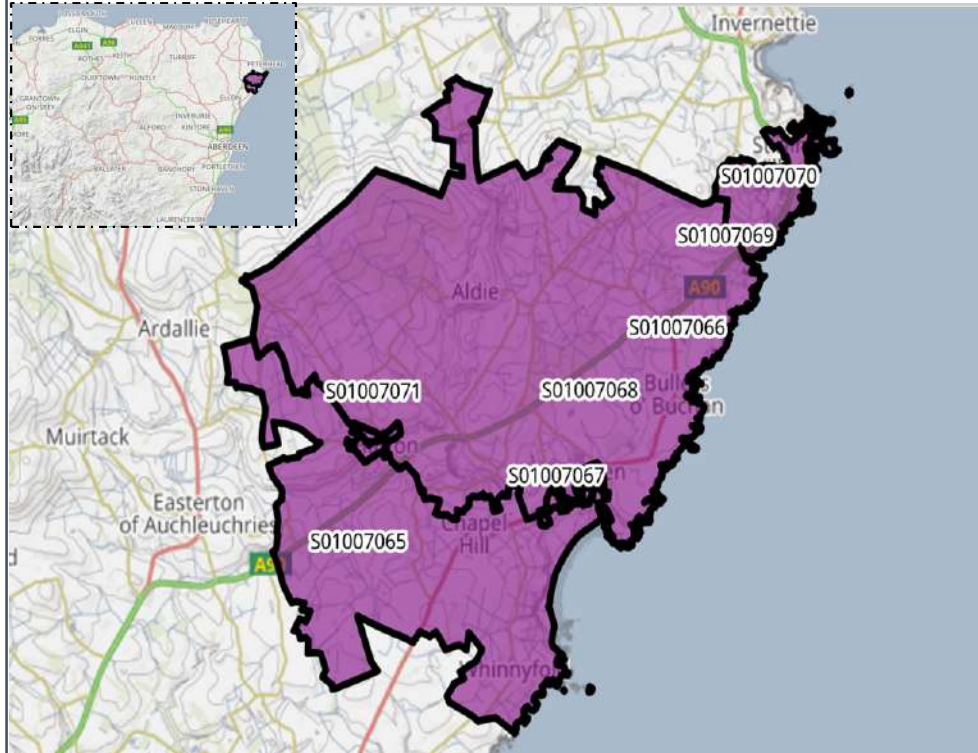


Daniel Stanford

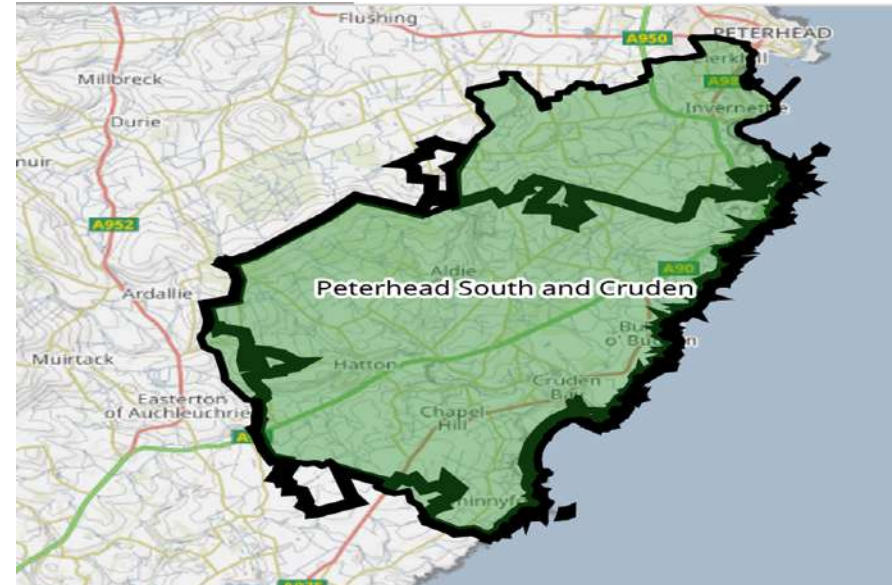


Cruden

Data Zones Within the Intermediate Zone



Relevant Multi-Member Wards



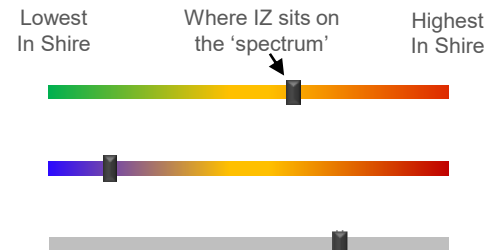
Notes on the Maps

The map on the left shows the location and the geographic area of the Cruden Intermediate Zone which contains seven Data Zones. The Intermediate Zone lies within Ward 6, Peterhead South.

Spectrum Charts Explained

The following statistical pages frequently utilise spectrum charts as a visual aid to accompany an indicator. They are used to place the relevant Intermediate Zone (IZ) in the context of all other IZs in Aberdeenshire with regards to that indicator.

The charts to the right are examples of the spectrum charts used in this report. The black line represents where the IZ sits in the context of the highest and lowest figures in Aberdeenshire. If the black line is situated towards the left-hand side, the IZ recorded one of the lowest figures in Aberdeenshire. Conversely, if the black line is towards the right-hand side, it recorded one of the highest figures in Aberdeenshire.



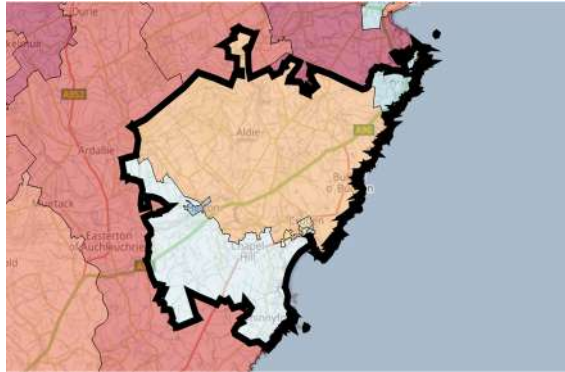
The green/red spectrum charts are the most common type. If the black line is situated towards the red end of the spectrum, it means the figure is objectively worse than most other IZs in Aberdeenshire and *vice versa*.

The blue/red spectrum charts are used in the demographic section to denote high population growth (red) and population decline (blue).

The grey spectrum charts are simply used to denote high and low in the context of Aberdeenshire, where the high / low figure is neither good nor bad. An example would be the proportion of dwellings that fall within Council Tax Bands F-G.

Cruden Demographic Data

Map of Cruden: Population Change (2014-2021)



The population of the Cruden IZ decreased by 3.6% between 2014 and 2021. This is mainly down to the population shifts in DZ S01007071 where there was a decrease of 59 (7.1%) and DZ S01007069 where there was a decrease of 50 (6.1%).

Compared to 2014 Cruden has seen significant increases in the older age groups especially with the 70+ age range with a 31.9% increase with 80-89-year-olds.

At 60.9%, the proportion of Working Age people in the IZ is just below the average when looking at the spectrum in an Aberdeenshire context.

At 16.3%, there is a lesser proportion of children in the IZ is than in most other areas across Aberdeenshire.

At 22.7% the number of older residents in the IZ is on the higher end of the spectrum than most other areas of Aberdeenshire with the spikes in population change among the 70+ age range.

In all the DZ's that have seen population decreases this is mostly down to a drop in children and working-class age groups.

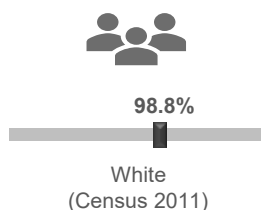
Population Change per Data Zone, 2014 & 2021

Data Zone	2014	2021	% Difference
S01007065	545	525	-3.7%
S01007066	654	653	-0.2%
S01007067	503	492	-2.2%
S01007068	749	729	-2.7%
S01007069	821	771	-6.1%
S01007070	478	475	-0.6%
S01007071	831	772	-7.1%
Total	4581	4417	-3.6%

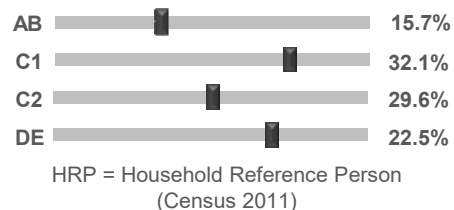
Country of Birth



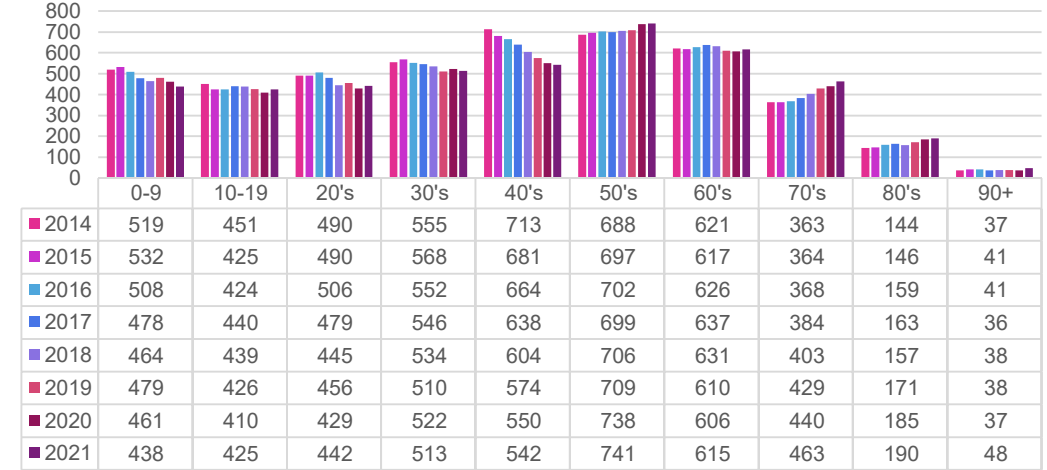
Ethnicity



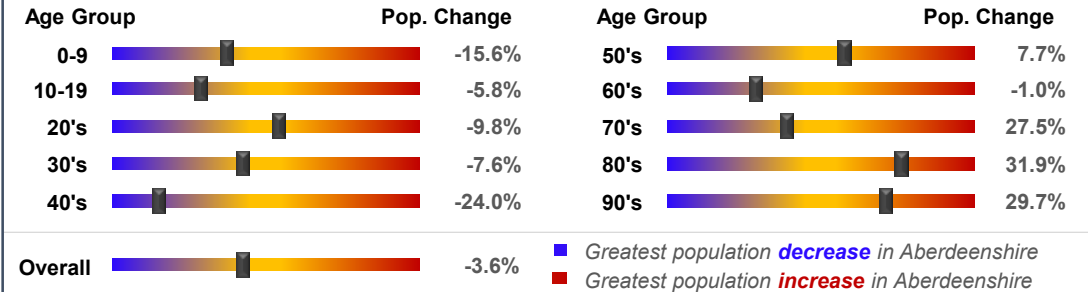
Approximated Social Grade of HRP



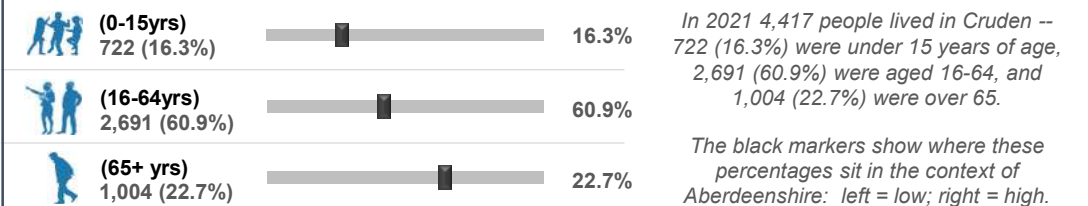
Population per Age Group, Cruden, 2014-2021

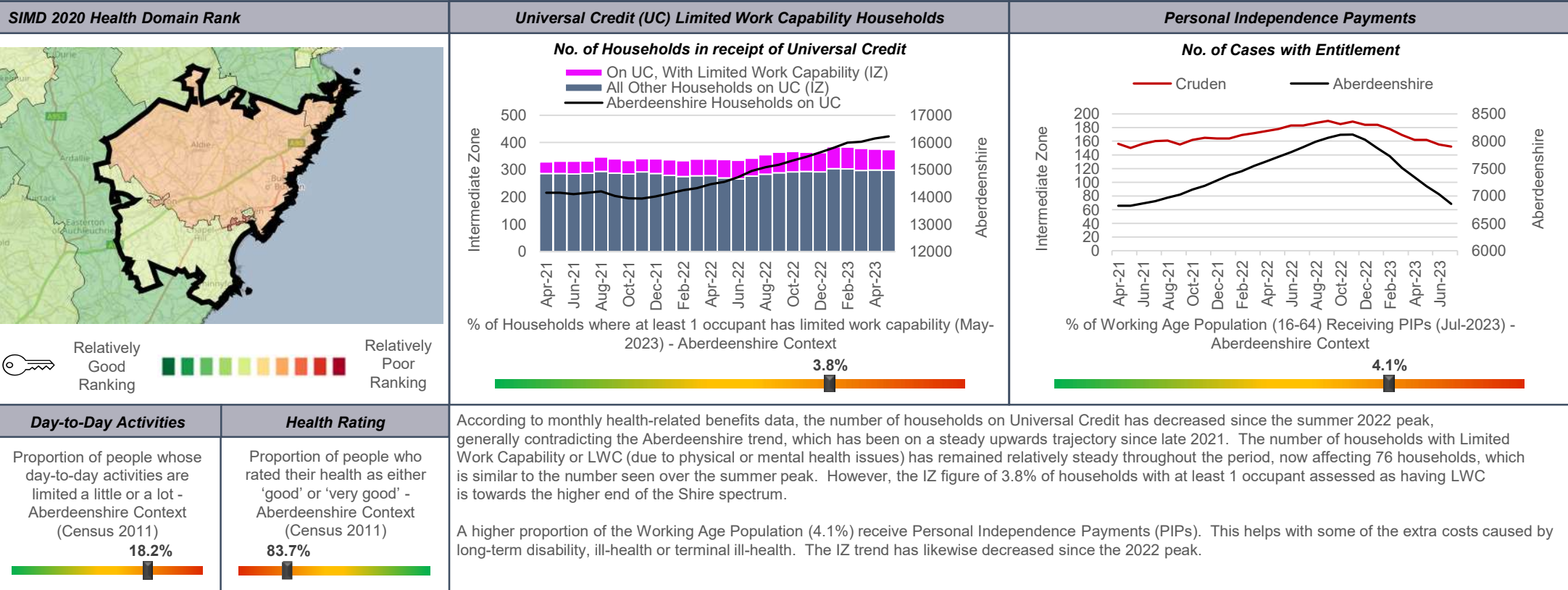


Rate of Population Change per Age Group, 2021 Compared to 2014



Population per Broad Age Group, 2021

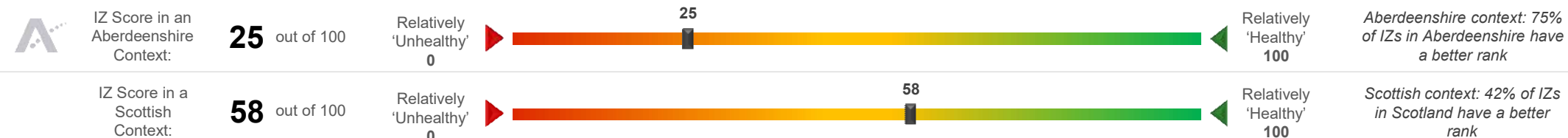




SIMD 2020 Health Domain Indicators per each Data Zone in the Cruden Intermediate Zone (compared to Aberdeenshire average)									
SIMD Health Domain Indicator (Data Zones colour-coordinated with map) >>	S01007065	S01007066	S01007067	S01007068	S01007069	S01007070	S01007071	Shire	
Health Domain Rank (see map for colour-coded rankings) (the higher, the better)	5810	5085	5857	3712	4980	3279	4734	5,254	
Comparative Illness Factor (Scotland = 100) (the lower, the better)	50	65	55	80	65	110	70	58	
Emergency stays in hospital (Scotland = 100) (the lower, the better)	62.0	66.1	61.4	90.5	78.2	97.6	78.6	71.5	
Hospital stays related to alcohol misuse (Scotland = 100) (the lower, the better)	32.4	56.8	0.0	48.4	48.4	58.9	64.9	45.4	
Hospital stays related to drug misuse (Scotland = 100) (the lower, the better)	29.4	0.0	0.0	40.7	0.0	0.0	17.0	30	
Proportion of live singleton births of low birth weight (the lower, the better)	0.0%	0.0%	0.0%	0.0%	5.0%	5.3%	8.3%	4.0%	
Proportion of population being prescribed drugs for anxiety, depression or psychosis	14.4%	14.0%	17.2%	19.8%	14.2%	18.9%	14.6%	15.6%	
Standardised Mortality Ratio (Scotland = 100) (the lower, the better)	58	131	93	110	90	106	59	85	

Cruden Health Data (2 of 2)

Cruden's position on the 'Health Spectrum' – Aberdeenshire and Scottish Context (the higher the score, the better)



Selection of ScotPHO indicators, Cruden IZ compared to Aberdeenshire & Scotland (latest data)

Indicator	Latest Available Figures				IZ Trend	Indicator Measurement
	IZ	IZ's latest figure compared to:				
		Aberdeenshire	Scotland			
Alcohol-related hospital stays	165.4	-37.8%		-72.9%	Down	Rate per 100,000 pop.
All-cause mortality among the 15-44 year olds	76.8	-18.7%		-34.5%	Down	Rate per 100,000 pop.
Babies exclusively breastfed at 6-8 weeks	31.3	-9.2%		-0.5%	Down	% of babies with a valid feeding status
Bowel screening uptake	69.7	-3.3%		4.1%	Up	% of eligible people (aged 50-74)
Child dental health in primary 1	64.6	-14.2%		-8.5%	Down	% of P1 pupils
Child dental health in primary 7	65.5	-14.2%		-9.4%	Up	% of P7 pupils
Child healthy weight in primary 1	78.2	0.8%		8.4%	Up	% of P1 pupils
Deaths all ages	978.8	-7.6%		-17.1%	Down	Rate per 100,000 pop.
Developmental concerns at 27-30 months	5.9	3.1%		-8.7%	Down	% of children reviewed
Early deaths from cancer (<75)	143.4	8.9%		-4.1%	Up	Rate per 100,000 pop.
Early deaths from coronary heart disease (<75)	26.0	-31.2%		-50.5%	Down	Rate per 100,000 pop.
Female life expectancy	82.1	0.3%		1.6%	Up	Life expectancy at birth in years
Healthy birth weight	80.0	-3.1%		-4.1%	Down	% of all singleton births
Immunisation uptake at 24 months - 6 in 1	98.0	0.2%		1.0%	Down	% of children in relevant age group
Immunisation uptake at 24 months - MMR	95.9	1.1%		1.5%	Down	% of children in relevant age group
Male life expectancy	77.9	0.3%		1.8%	Down	Life expectancy at birth in years
Maternal obesity	33.3	8.9%		7.2%	Up	% of women at antenatal booking
Patients (65+) with multiple A&E hospitalisations	6398.0	1.7%		-6.2%	Down	Rate per 100,000 pop.
Patients hospitalised with asthma	73.9	131.3%		8.0%	Down	Rate per 100,000 pop.
Patients hospitalised with COPD	102.8	-12.1%		-50.4%	Down	Rate per 100,000 pop.
Patients hospitalised with coronary heart disease	264.9	-10.0%		-22.5%	Down	Rate per 100,000 pop.
Patients with emergency hospitalisations	5529.6	4.7%		-23.6%	Down	Rate per 100,000 pop.
Premature births	12.5	3.2%		4.3%	Up	% of all live births
Uptake of the HPV vaccine in S3 girls	89.3	-0.1%		4.5%	Down	% of S3 girls

Based on the 24 health-related indicators in the table, this IZ is situated at the more vulnerable end of the spectrum (25) in an Aberdeenshire context. The IZ fares slightly better when all IZs in Scotland are taken into consideration as it is in the top half nationally (58).

The area compares favourably to most other areas in Scotland in terms of Alcohol-related hospital stays, Developmental concerns at 27-30 months, Bowel screening uptake, Patients with emergency hospitalisations, Child dental health in Primary 7 and Healthy birth weight.

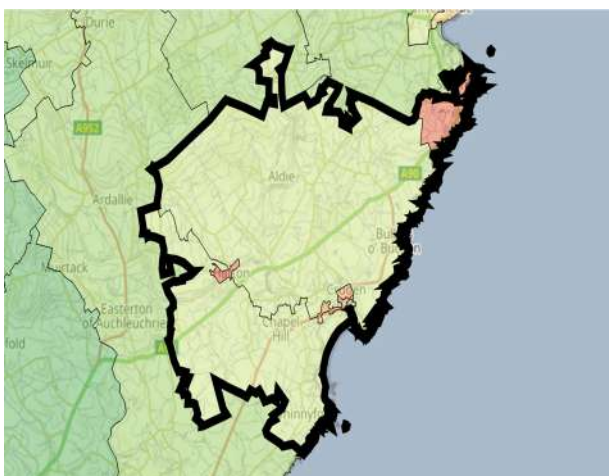
Issues that may require further investigation include:

- Early deaths from cancer (<75)

With regards to each of the indicators listed above the IZ compares less favourably to other areas in Aberdeenshire and, in some instances, Scotland (and/or the trend is worsening).

Cruden Economic Data (1 of 3)

Rank of Household Income per Data Zone (2023)



In terms of household income, this IZ is at the lower end of the scale in Aberdeenshire. The median household income in 2023 equated to £36,452 which is £5,304 lower than the Shire average (£41,756).

Median household income ranges from £27,724 in DZ S01007070 to £45,153 in DZ S0100765.

Approximately 6.5% of households in this IZ earn more than £10,000 per year, which is lower-than-average (5.3%). This equates to roughly 131 households.

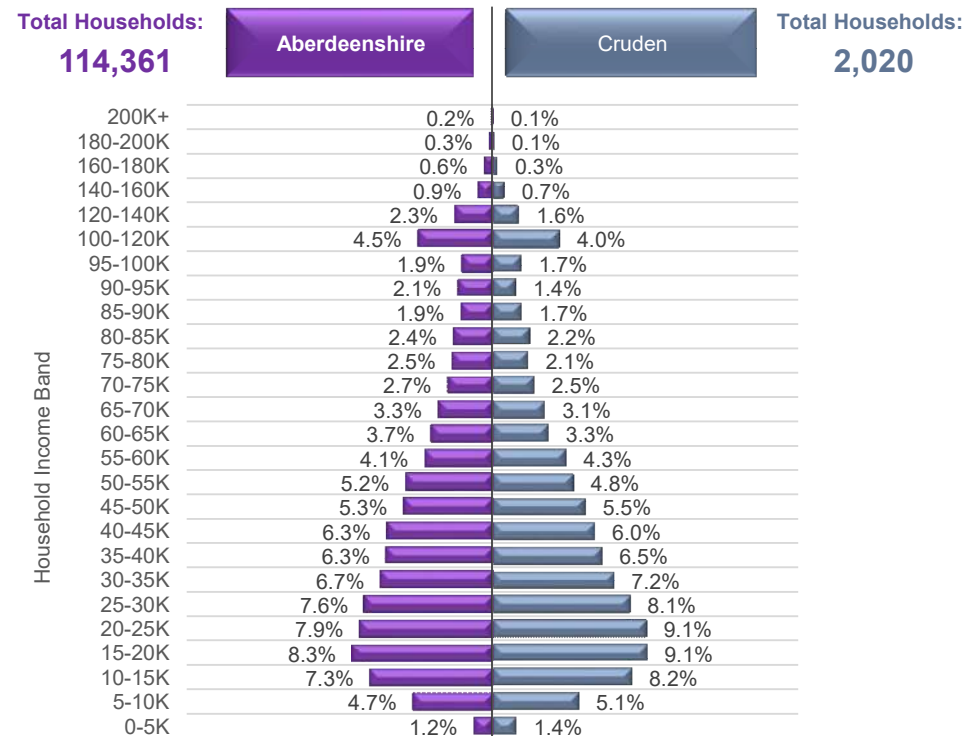
In addition, Approximately 6.8% of households in this IZ earn more than £100,000 per year, which is lower than average (10.1%). This equates to roughly 137 households.



Household Income per Data Zone (2023)

Data Zone	Households	Average Income	Median Income	Lower Quartile Income
S01007065	239	£ 52,919	£ 45,153	£ 26,206
S01007066	269	£ 50,978	£ 43,848	£ 25,511
S01007067	243	£ 44,182	£ 37,026	£ 21,886
S01007068	342	£ 45,370	£ 35,949	£ 19,038
S01007069	325	£ 40,991	£ 33,820	£ 19,793
S01007070	247	£ 34,128	£ 27,724	£ 16,205
S01007071	355	£ 43,802	£ 35,235	£ 20,014

Household Income per Band, Cruden & Aberdeenshire (2023)



© CACI Limited 1996 - 2022 This report shall be used solely for academic, personal and/or non-commercial purposes. The applicable copyright notices can be found at <https://www.caci.co.uk/copyrightnotices.pdf>

Median Household Income (2023)



£36,452

Aberdeenshire: £41,756

£36,452



% of Households Earning Less Than £10k (2023)



<£10K

6.5%

Aberdeenshire: 5.3%

6.5%



% of Households Earning More Than £100k (2023)



>£100K

6.8%

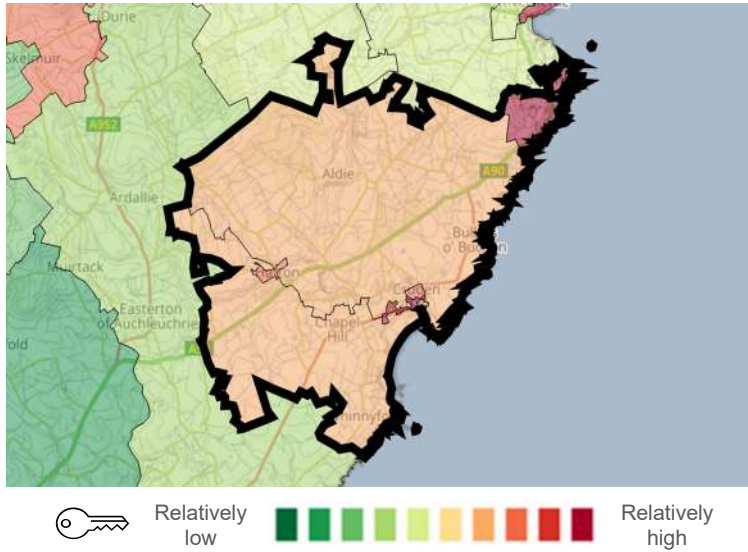
Aberdeenshire: 10.1%

6.8%

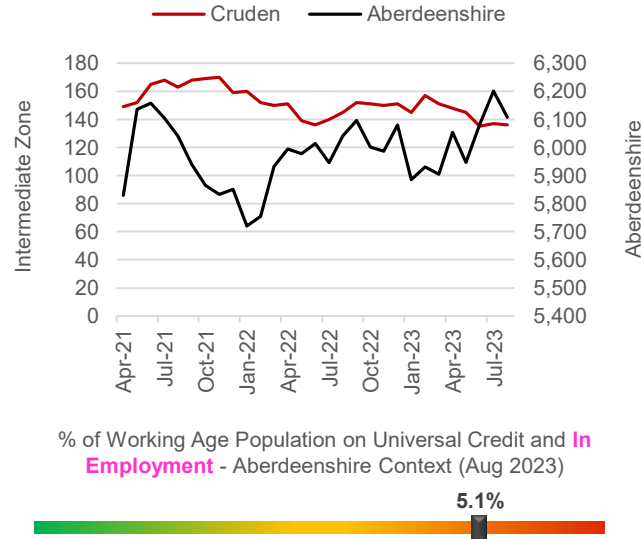


Cruden Economic Data (2 of 3)

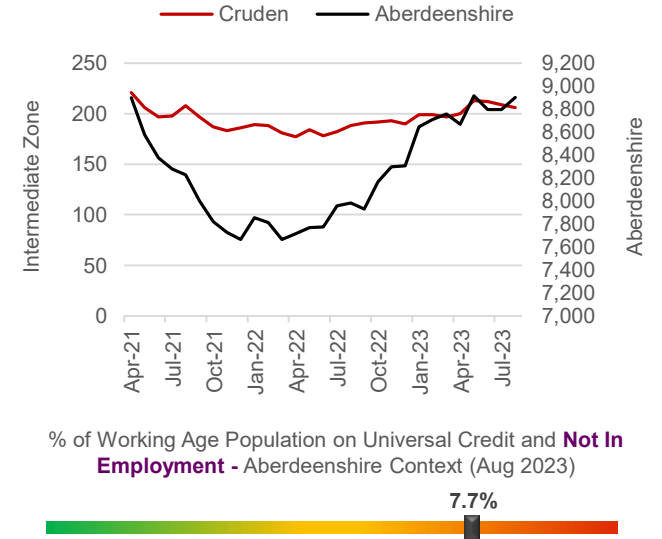
Latest Unemployment Rate - Ranking per Data Zone



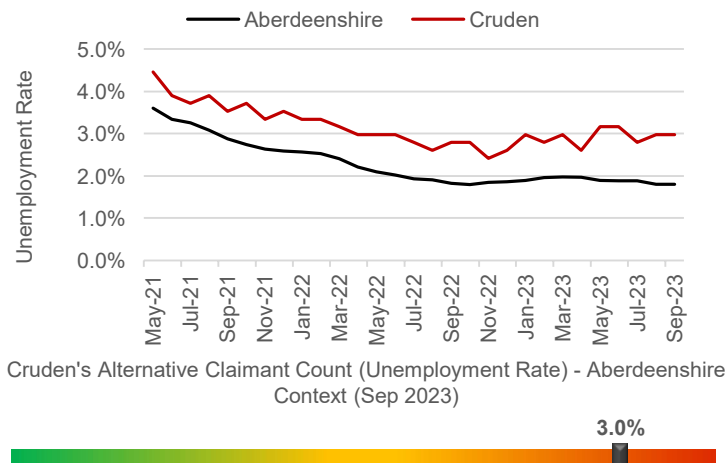
People on Universal Credit - In Employment



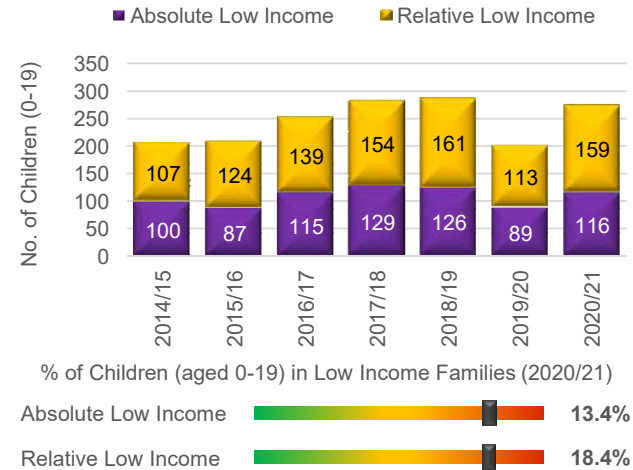
People on Universal Credit - Not In Employment



Alternative Claimant Count - Effective 'Unemployment Rate'



Children in Low Income Families



Summary

The number of people claiming Universal Credit (UC) - who are also in employment - has remained relatively steady over the last few months, contrary to the Shire-wide trend, which has increased. Latest figures show 5.1% of people aged 16-64 (who also have jobs) are claiming UC. This is towards the higher end of the spectrum in a Shire context. A similar picture emerges in relation to people on UC and not in employment.

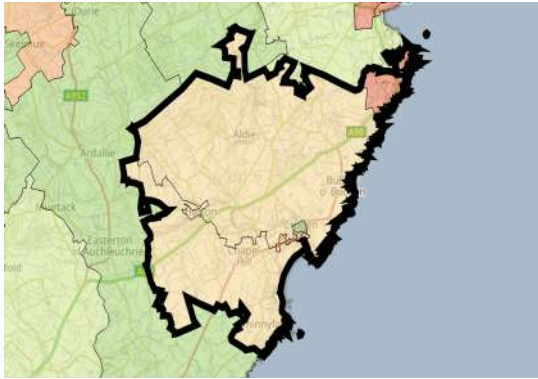
Like Aberdeenshire, the unemployment rate in the IZ has fallen since the September 2020 peak of 3.8%. Latest data suggests approximately 3.0% of the Working Age population is currently out-of-work, which is significantly higher than the Aberdeenshire rate (1.8%).

Children living in low-income families are relatively uncommon. However, recent increases suggest the issue may be coming more to the fore over recent years, particularly since 2020/21.

Economic Indicators

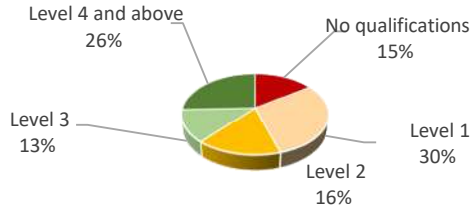
Cruden Economic Data (3 of 3)

People With No Qualifications, Census 2011



Relatively low Relatively high

% of Employees per Qualification Type



Summary

The employment numbers per broad industrial group relate to the kind of jobs within the area, which may be filled by those living outwith the IZ.

Major industries in terms of jobs in the area include the Manufacturing sector, the Health sector, Accommodation and the Education sector.

There has been a large growth in Retail sector. Jobs in this industry have increased five times since 2020.

Even with the growth in these type of jobs, there has been a 8% decrease in jobs across the IZ between 2020 and 2022, suggesting the IZ is still feeling the effects post-Covid.

The area also appears to have attracted a number of smaller enterprises over the most recent year (i.e. companies with sales between £0 – 49k).

Approximate Employment Count per Broad Industrial Group, Cruden, 2020-22

Broad Industrial Group	2020	2021	2022	2020-22 % Diff.
Agriculture, forestry & fishing	35	50	45	29%
Mining, quarrying & utilities	0	0	0	0%
Manufacturing	600	600	400	-33%
Construction	50	100	50	0%
Motor trades	10	10	15	50%
Wholesale	50	50	50	0%
Retail	20	50	100	400%
Transport & storage (inc postal)	20	100	50	150%
Accommodation & food services	100	75	100	0%
Information & communication	10	5	5	-50%
Financial & insurance	0	0	0	0%
Property	5	5	0	-100%
Professional, scientific & technical	75	75	75	0%
Business administration & support services	25	25	20	-20%
Public administration & defence	10	10	10	0%
Education	100	50	100	0%
Health	150	100	125	-17%
Arts, entertainment, recreation & other services	35	45	50	43%
Total	1,295	1,350	1,195	-8%

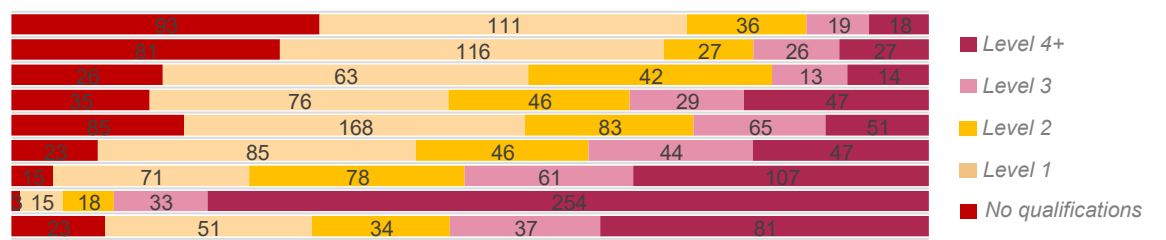
Approximate Number of Enterprises per Turnover Band (£), Cruden, 2021-23

Turnover	2021	2022	2023	2021-23 % Diff.
£1m+	0	0	0	0%
£500-999k	0	5	0	0%
£200-499k	15	10	15	0%
£100-199k	55	50	50	-9%
£50-99k	30	25	20	-33%
£0-49k	20	30	25	25%

Employees per Occupation Type, Census 2011

Elementary occupations	277
Process, plant and machine operatives	277
Sales and customer service occupations	158
Caring, leisure and other service occupations	233
Skilled trades occupations	452
Administrative and secretarial occupations	245
Associate professional and technical...	332
Professional occupations	323
Managers, directors and senior officials	226

Employees per Qualification & Occupation Type, Census 2011



Housing Indicators

Cruden Housing Data



Relatively sparse / rural

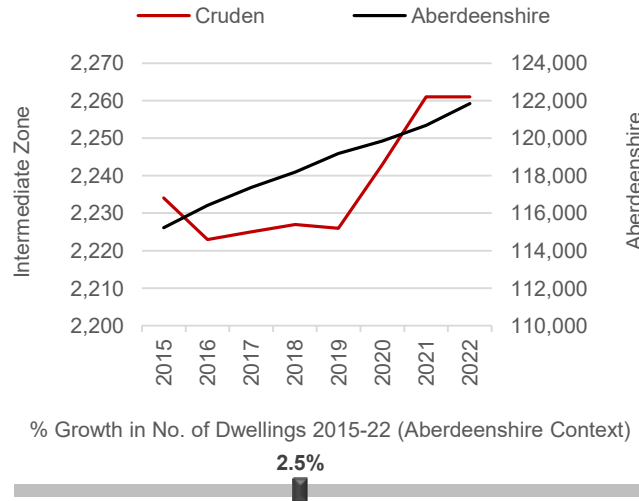
Dwellings per Hectare (2022)

0.34



Relatively dense / urban

Number of Dwellings, 2015-22



Summary

At 0.34 dwellings per hectare, this IZ is in the lower range of the spectrum between the rural and urban extremes.

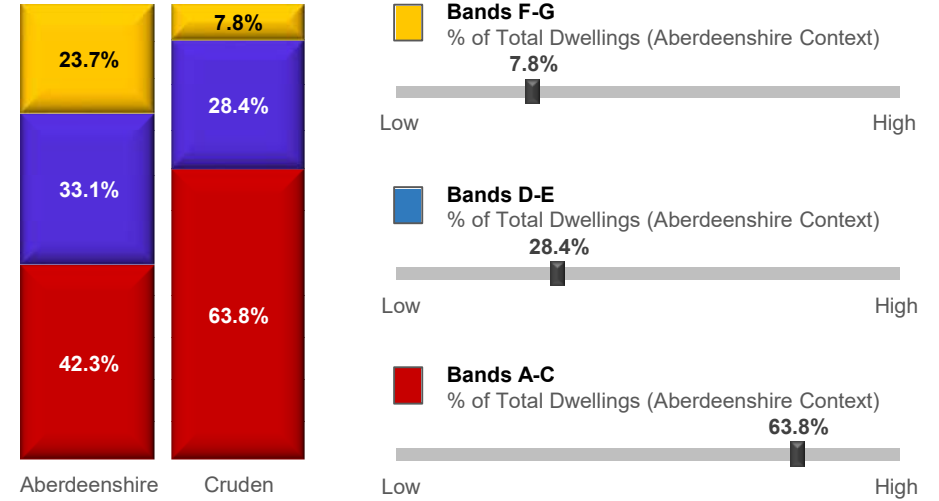
The number of dwellings in the IZ has increased by 2.5% since 2015, which is towards the lower end of the spectrum in an Aberdeenshire context.

House building in the area has been on steady increase since 2015 – 2021 and has since plateaued.

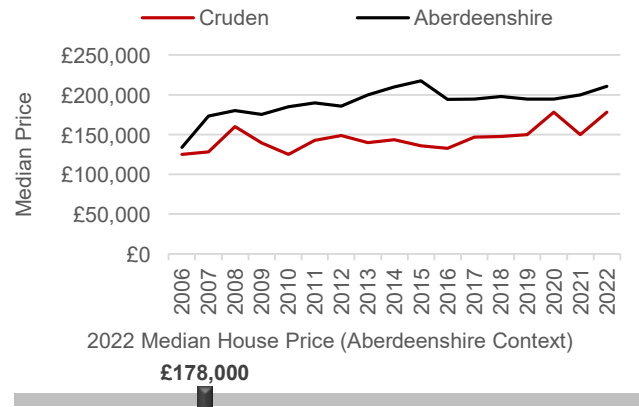
A relatively large proportion of the dwellings in this IZ (63.8%) fall within Council Tax Bands A-C. This puts the IZ towards the higher end of the spectrum. Relatively few properties fall within Bands F-G (7.8%).

The median house price is £178,000 which is significantly lower £32,995 higher than the Aberdeenshire average (£210,995).

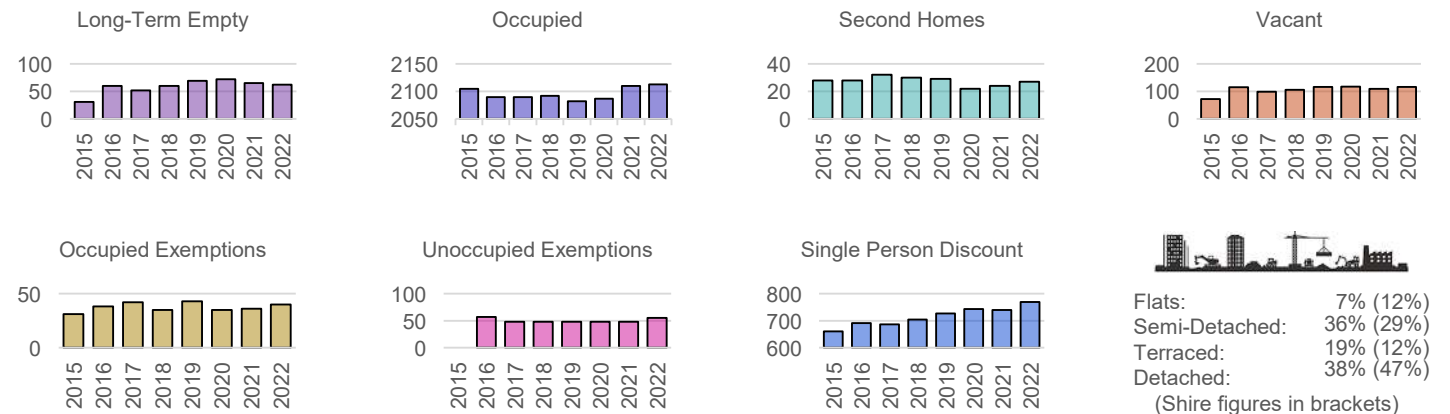
Proportion of Dwellings per Council Tax Band, 2022



Median Residential House Prices (Sales), 2006-22

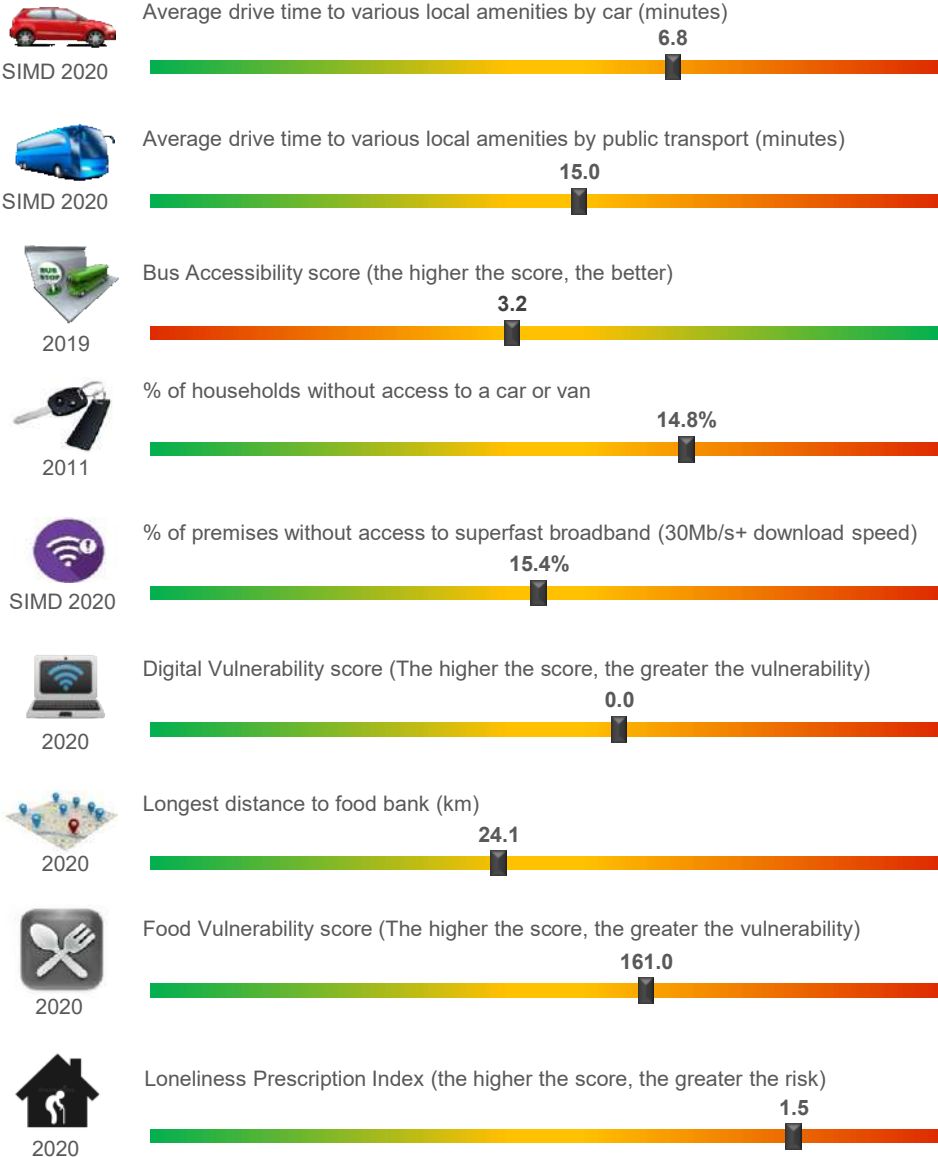


Housing Types, 2015-22 (Data on Flats, etc., relate to 2017 - the latest year for which data are available)

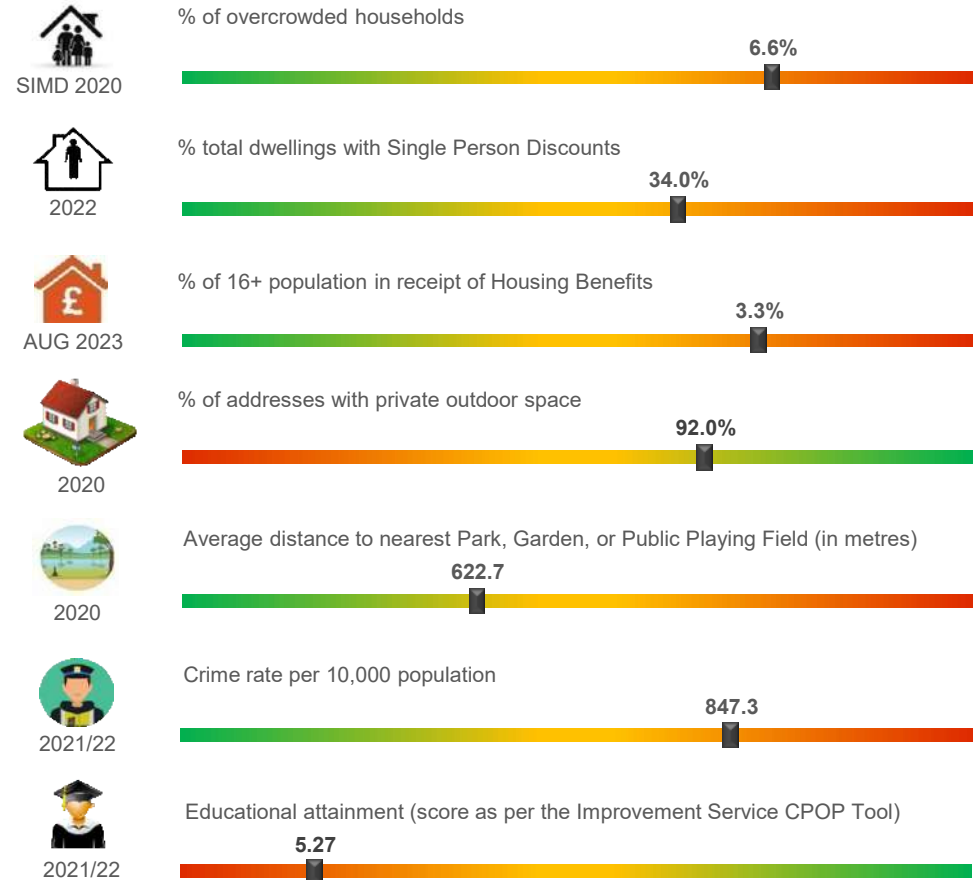


Cruden Other Socio-Economic Data

Geographic Access / Digital Connectivity / Food Vulnerability / Loneliness Proxy



Housing / Environment / Crime Rate / Educational Attainment



Summary

According to the miscellaneous socio-economic indicators on this page, the IZ appears to be well served in terms of households with average drive times to various local amenities by car and bus, and a high Bus Accessibility score. Almost 15% of households in Cruden do not have access to a car or van. There is a high % of homes with private outdoor space (92.0%) and the average distance to the local park, garden or public playing field is just over 622m. There is a higher than average % of 16+ population in receipt of Housing Benefits, single person discounts and overcrowded houses.