

Auchnagatt

Intermediate Zone Statistical Summary

2023

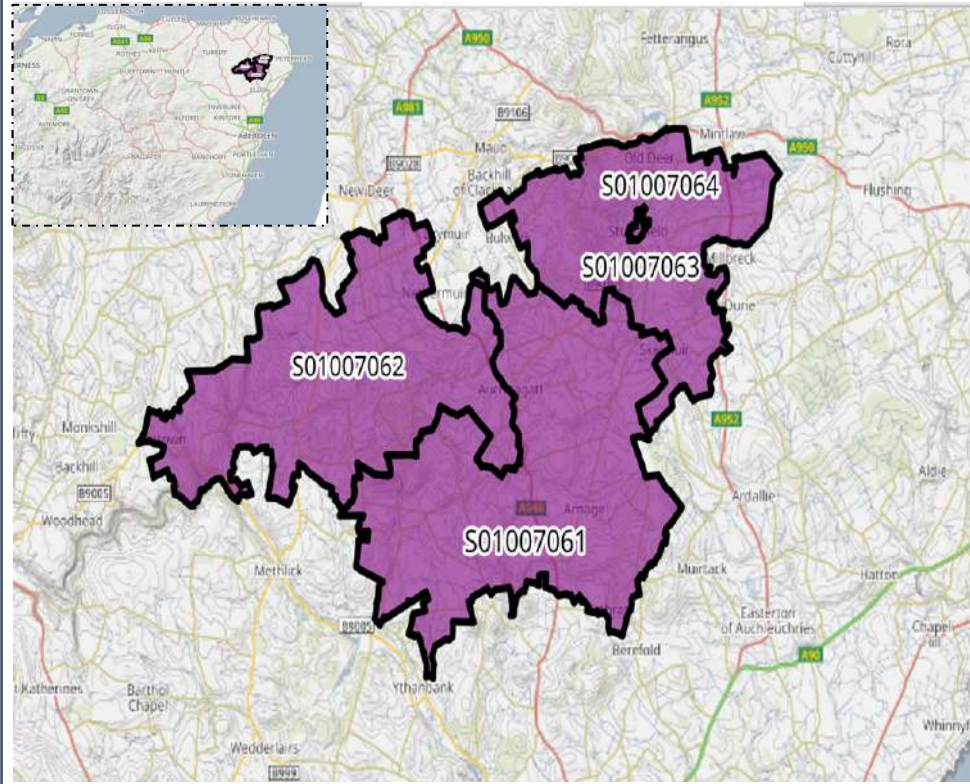


Daniel Stanford

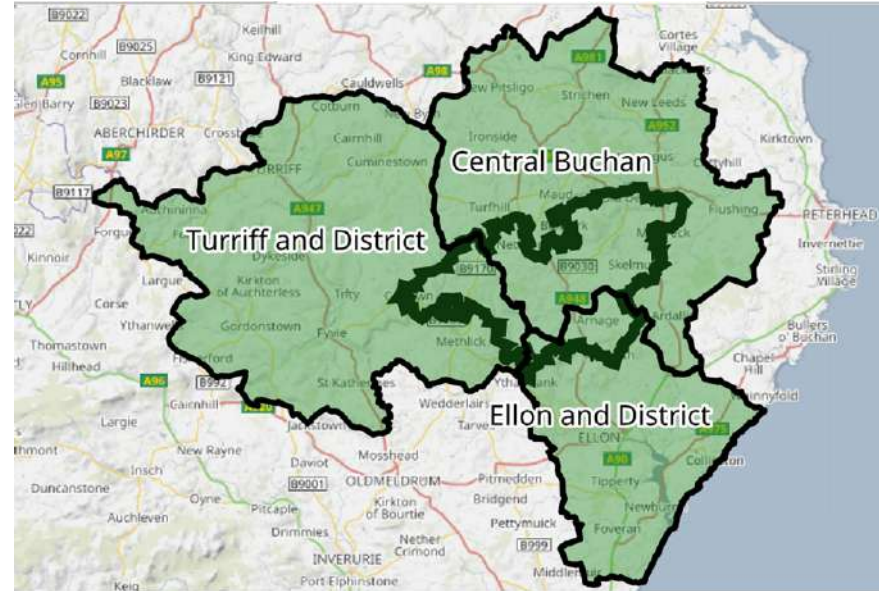


Auchnagatt

Data Zones Within the Intermediate Zone



Relevant Multi-Member Wards



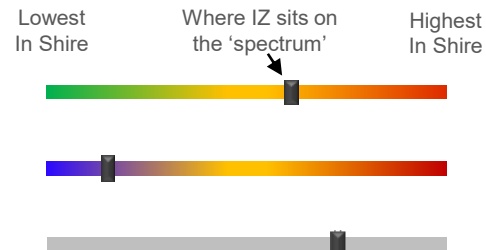
Notes on the Maps

The Map on the left shows the location and geographic area of the Auchnagatt Intermediate Zone which contains four Data Zones. The Intermediate Zone lies across three Wards, Ward 4, Central Buchan, Ward 7, Turriff and District and Ward 9, Ellon and District.

Spectrum Charts Explained

The following statistical pages frequently utilise spectrum charts as a visual aid to accompany an indicator. They are used to place the relevant Intermediate Zone (IZ) in the context of all other IZs in Aberdeenshire with regards to that indicator.

The charts to the right are examples of the spectrum charts used in this report. The black line represents where the IZ sits in the context of the highest and lowest figures in Aberdeenshire. If the black line is situated towards the left-hand side, the IZ recorded one of the lowest figures in Aberdeenshire. Conversely, if the black line is towards the right-hand side, it recorded one of the highest figures in Aberdeenshire.



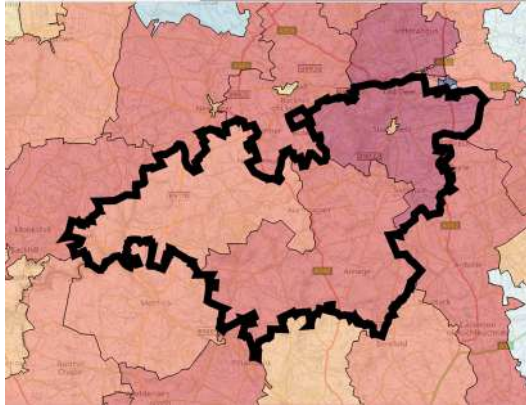
The green/red spectrum charts are the most common type. If the black line is situated towards the red end of the spectrum, it means the figure is objectively worse than most other IZs in Aberdeenshire and *vice versa*.

The blue/red spectrum charts are used in the demographic section to denote high population growth (red) and population decline (blue).

The grey spectrum charts are simply used to denote high and low in the context of Aberdeenshire, where the high / low figure is neither good nor bad. An example would be the proportion of dwellings that fall within Council Tax Bands F-G.

Auchnagatt Demographic Data

Map of Auchnagatt: Population Change (2014-2021)



Low Growth / Depopulation High Growth

The population of the Auchnagatt IZ increased by 9.3% between 2014 and 2021. This is mainly down to the population spikes in DZ S01007064 where there was an increase of 241 (32.8%) and DZ S01007061 where there was an increase of 30 (3.4%).

Compared to 2014 Auchnagatt has seen significant increases in the older age groups especially with the 70+ age range with a 51.0% increase with 70–79-year-olds.

At 59.8%, the proportion of Working Age people in the IZ is at the lower end of the spectrum in an Aberdeenshire context.

At 21.2%, there is a greater proportion of children in the IZ is than in most other areas across Aberdeenshire.

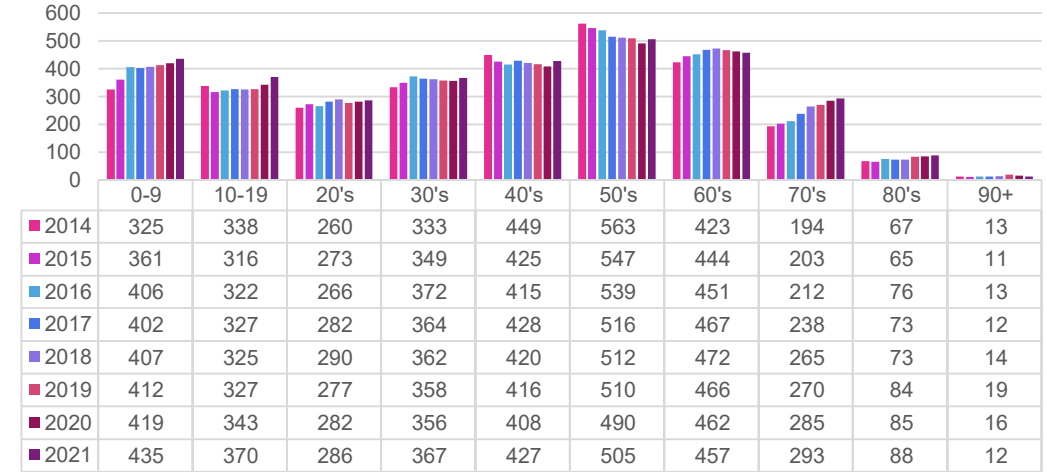
At 19.0% the number of older residents in the IZ is lower than most other areas of Aberdeenshire even with the spikes in population change among the 70+ age range.

In the one DZ that has seen a population decrease this is mostly down to a drop in working-class age groups and 50-64 age range.

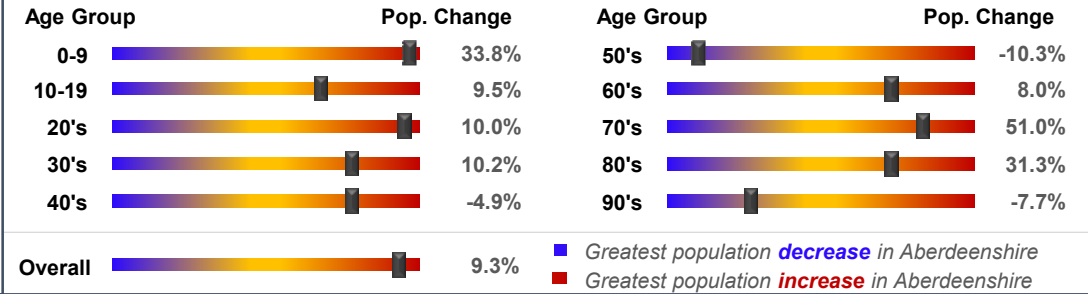
Population Change per Data Zone, 2014 & 2021

Data Zone	2014	2021	% Difference
S01007061	893	923	3.4%
S01007062	668	681	1.9%
S01007063	670	661	-1.3%
S01007064	734	975	32.8%
Total	2965	3240	9.3%

Population per Age Group, Auchnagatt, 2014-2021



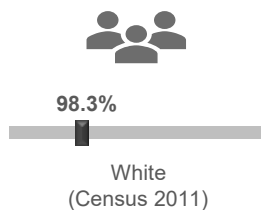
Rate of Population Change per Age Group, 2021 Compared to 2014



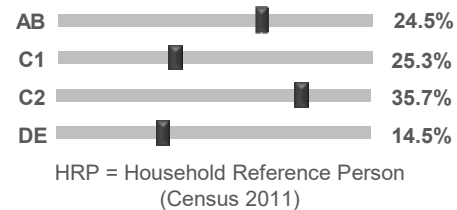
Country of Birth



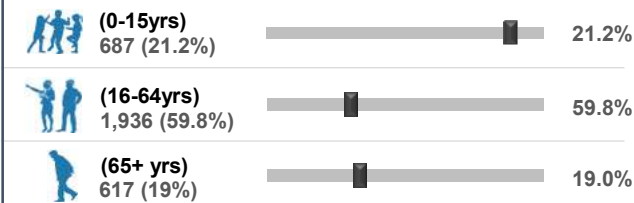
Ethnicity



Approximated Social Grade of HRP



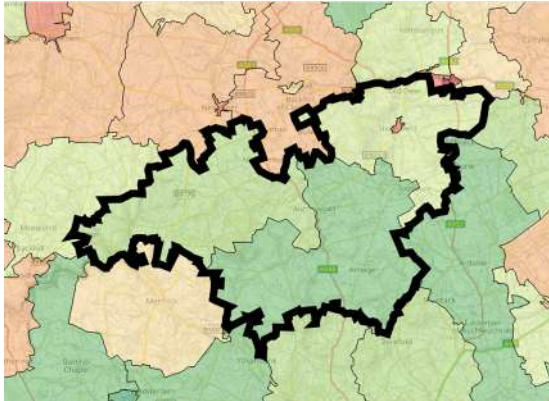
Population per Broad Age Group, 2021



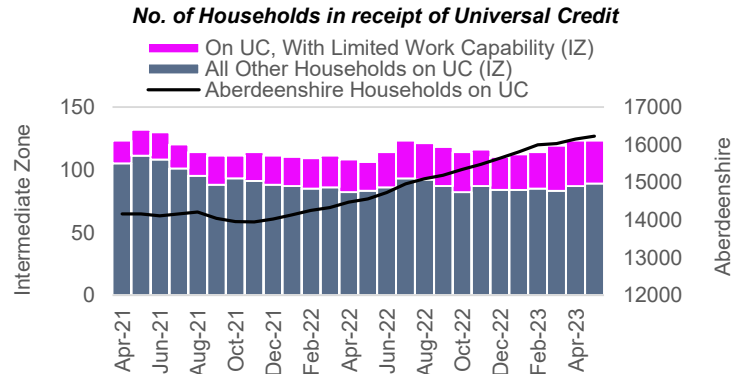
In 2021 3,240 people lived in Auchnagatt - 687 (21.2%) were under 15 years of age, 1,936 (59.8%) were aged 16-64, and 617 (19%) were over 65.

The black markers show where these percentages sit in the context of Aberdeenshire: left = low; right = high.

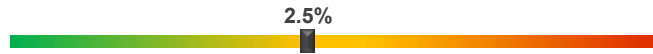
SIMD 2020 Health Domain Rank



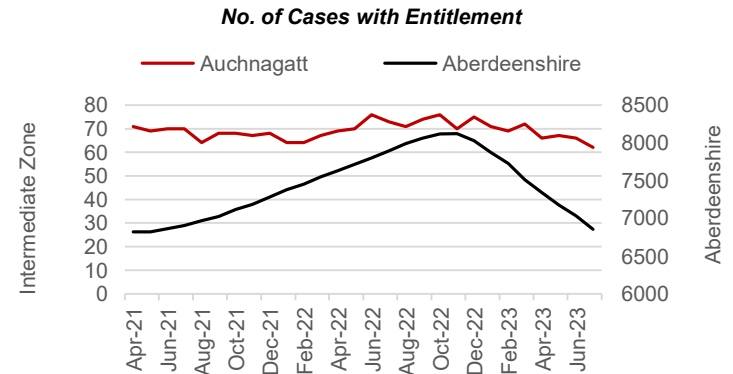
Universal Credit (UC) Limited Work Capability Households



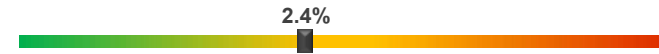
% of Households where at least 1 occupant has limited work capability (May-2023) - Aberdeenshire Context



Personal Independence Payments



% of Working Age Population (16-64) Receiving PIPs (Jul-2023) - Aberdeenshire Context



Day-to-Day Activities

Proportion of people whose day-to-day activities are limited a little or a lot - Aberdeenshire Context (Census 2011)

14.5%



Health Rating

Proportion of people who rated their health as either 'good' or 'very good' - Aberdeenshire Context (Census 2011)

87.4%



According to monthly health-related benefits data, the number of households on Universal Credit has decreased since the summer 2022 peak, generally contradicting the Aberdeenshire trend, which has been on a steady upwards trajectory since late 2021. The number of households with Limited Work Capability or LWC (due to physical or mental health issues) has remained relatively steady throughout the period, now affecting 34 households, which is similar to the number seen over the summer peak. The IZ figure of 2.5% of households with at least 1 occupant assessed as having LWC is towards the middle of the Shire spectrum.

A lower proportion of the Working Age Population (2.4%) receive Personal Independence Payments (PIPs). This helps with some of the extra costs caused by long-term disability, ill-health or terminal ill-health. The IZ trend has likewise decreased since the 2022 peak.

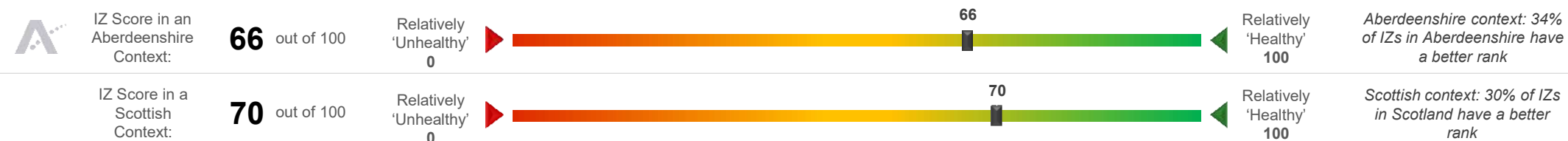
SIMD 2020 Health Domain Indicators per each Data Zone in the Auchnagatt Intermediate Zone (compared to Aberdeenshire average)

SIMD Health Domain Indicator (Data Zones colour-coordinated with map) >>

	S01007061	S01007062	S01007063	S01007064	Shire
Health Domain Rank (see map for colour-coded rankings) (the higher, the better)	6480	6074	4508	5688	5,254
Comparative Illness Factor (Scotland = 100) (the lower, the better)	35	40	70	55	58
Emergency stays in hospital (Scotland = 100) (the lower, the better)	61.9	81.8	84.9	58.9	71.5
Hospital stays related to alcohol misuse (Scotland = 100) (the lower, the better)	23.3	14.9	67.7	62.4	45.4
Hospital stays related to drug misuse (Scotland = 100) (the lower, the better)	0.0	0.0	0.0	0.0	30
Proportion of live singleton births of lowbirth weight (the lower, the better)	5.0%	9.1%	10.0%	4.0%	4.0%
Proportion of population being prescribed drugs for anxiety, depression or psychosis	12.6%	12.3%	17.7%	14.6%	15.6%
Standardised Mortality Ratio (Scotland = 100) (the lower, the better)	69	80	56	70	85

Auchnagatt Health Data (2 of 2)

Auchnagatt's position on the 'Health Spectrum' – Aberdeenshire and Scottish Context (the higher the score, the better)



Selection of ScotPHO indicators, Auchnagatt IZ compared to Aberdeenshire & Scotland (latest data)

Indicator	Latest Available Figures				IZ Trend	Indicator Measurement
	IZ	IZ's latest figure compared to:				
		Aberdeenshire	Scotland			
Alcohol-related hospital stays	137.8	-48.1%		-77.4%	Down	Rate per 100,000 pop.
All-cause mortality among the 15-44 year olds	108.6	15.1%		-7.3%	Down	Rate per 100,000 pop.
Babies exclusively breastfed at 6-8 weeks	52.9	12.3%		21.1%	Up	% of babies with a valid feeding status
Bowel screening uptake	76.0	3.0%		10.5%	Up	% of eligible people (aged 50-74)
Child dental health in primary 1	79.6	0.8%		6.4%	Up	% of P1 pupils
Child dental health in primary 7	92.9	13.1%		17.9%	Up	% of P7 pupils
Child healthy weight in primary 1	78.1	0.8%		8.4%	Down	% of P1 pupils
Deaths all ages	952.4	-10.0%		-19.3%	Down	Rate per 100,000 pop.
Developmental concerns at 27-30 months	2.3	-0.6%		-12.3%	Down	% of children reviewed
Early deaths from cancer (<75)	200.2	51.9%		33.8%	Up	Rate per 100,000 pop.
Early deaths from coronary heart disease (<75)	19.6	-48.2%		-62.8%	Down	Rate per 100,000 pop.
Female life expectancy	85.9	5.0%		6.5%	Up	Life expectancy at birth in years
Healthy birth weight	85.0	2.0%		0.9%	Up	% of all singleton births
Immunisation uptake at 24 months - 6 in 1	98.3	0.5%		1.3%	Down	% of children in relevant age group
Immunisation uptake at 24 months - MMR	94.0	-0.8%		-0.4%	Up	% of children in relevant age group
Male life expectancy	81.5	4.9%		6.4%	Down	Life expectancy at birth in years
Maternal obesity	26.5	2.1%		0.4%	Up	% of women at antenatal booking
Patients (65+) with multiple A&E hospitalisations	7190.6	14.3%		5.4%	Down	Rate per 100,000 pop.
Patients hospitalised with asthma	60.0	87.9%		-12.3%	Down	Rate per 100,000 pop.
Patients hospitalised with COPD	185.8	58.8%		-10.4%	Down	Rate per 100,000 pop.
Patients hospitalised with coronary heart disease	257.1	-12.6%		-24.7%	Down	Rate per 100,000 pop.
Patients with emergency hospitalisations	5431.9	2.9%		-24.9%	Down	Rate per 100,000 pop.
Premature births	5.8	-3.5%		-2.5%	Down	% of all live births
Uptake of the HPV vaccine in S3 girls	88.4	-1.0%		3.5%	Down	% of S3 girls

Based on the 24 health-related indicators in the table, this IZ is situated at the less vulnerable end of the spectrum in an Aberdeenshire context. The IZ fares slightly better when all IZs in Scotland are taken into consideration and it is in the top half nationally.

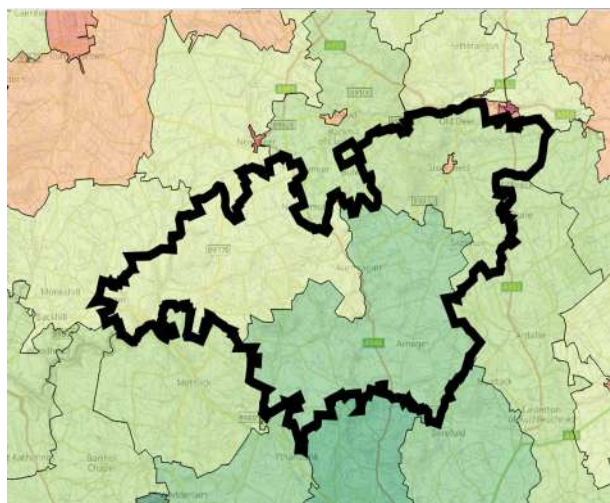
The area compares favourably to most other areas in Scotland in terms of Alcohol-related hospital stays, Developmental concerns at 27-30 months, Bowel screening uptake, Patients with emergency hospitalisations, Child dental health in Primary 7 and Healthy birth weight.

Issues that may require further investigation include:
- Early deaths from cancer (<75)

With regards to each of the indicators listed above the IZ compares less favourably to other areas in Aberdeenshire and, in some instances, Scotland (and/or the trend is worsening).

Auchnagatt Economic Data (1 of 3)

Rank of Household Income per Data Zone (2023)



In terms of household income, this IZ is among the more affluent in Aberdeenshire. The median household income in 2023 equated to £46,547 which is £4,791 higher than the Shire average (£41,756).

Median household income ranges from £38,174 in DZ S01007063 to £51,073 in DZ S01007061.

Approximately 3.4% of households in this IZ earn less than £10,000 per year, which is lower-than-average (5.3%). This equates to roughly 46 households.

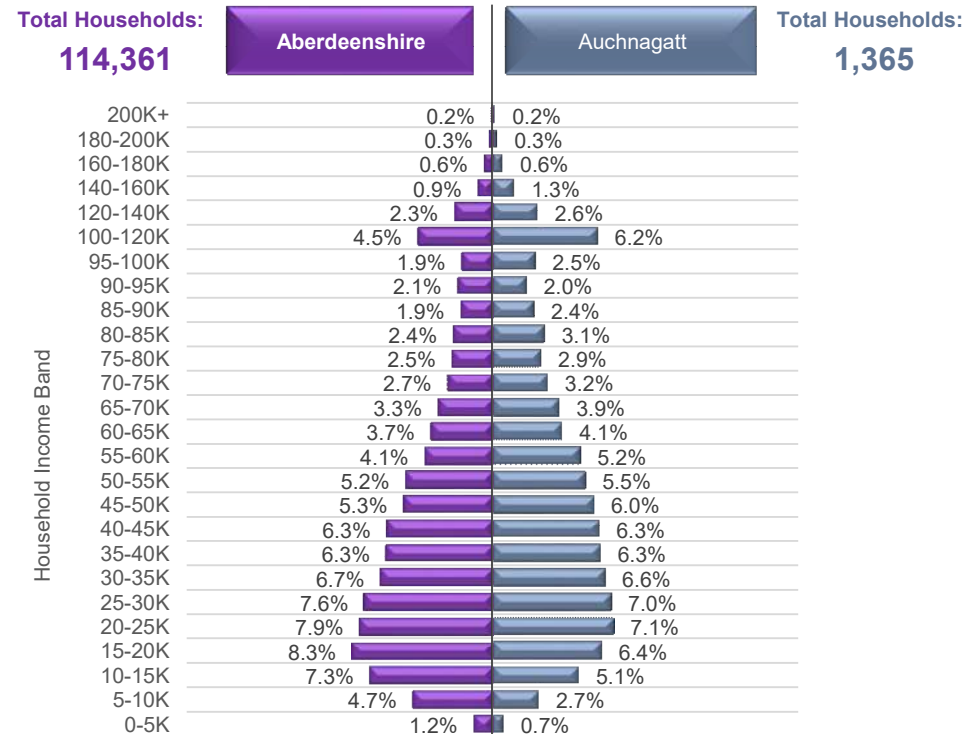
In addition, Approximately 11.1% of households in this IZ earn more than £100,000 per year, which is higher than average (10.1%). This equates to roughly 152 households.



Household Income per Data Zone (2023)

Data Zone	Households	Average Income	Median Income	Lower Quartile Income
S01007061	362	£ 58,354	£ 51,073	£ 30,937
S01007062	294	£ 53,604	£ 45,738	£ 26,863
S01007063	294	£ 45,963	£ 38,174	£ 21,679
S01007064	415	£ 56,562	£ 49,224	£ 29,210

Household Income per Band, Auchnagatt & Aberdeenshire (2023)



© CACI Limited 1996 - 2022 This report shall be used solely for academic, personal and/or non-commercial purposes. The applicable copyright notices can be found at <https://www.caci.co.uk/copyrightnotices.pdf>

Median Household Income (2023)



£46,547

Aberdeenshire: £41,756

£46,547



% of Households Earning Less Than £10k (2023)



<£10K

3.4%

Aberdeenshire: 5.3%

3.4%



% of Households Earning More Than £100k (2023)



>£100K

11.1%

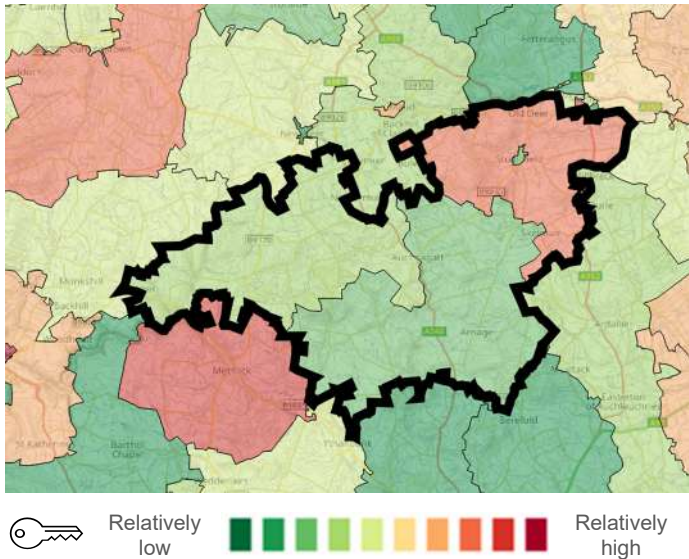
Aberdeenshire: 10.1%

11.1%

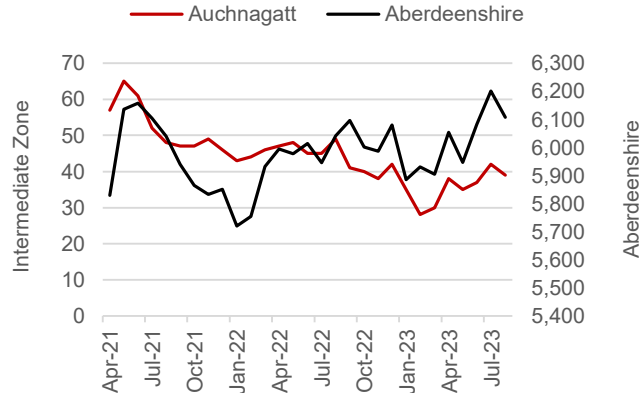


Achnagatt Economic Data (2 of 3)

Latest Unemployment Rate - Ranking per Data Zone



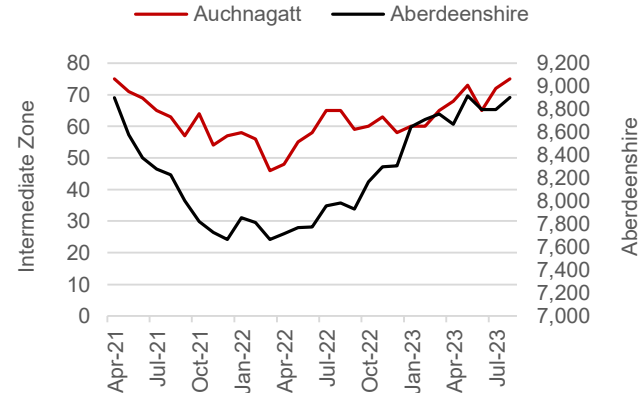
People on Universal Credit - In Employment



% of Working Age Population on Universal Credit and **In Employment** - Aberdeenshire Context (Aug 2023)



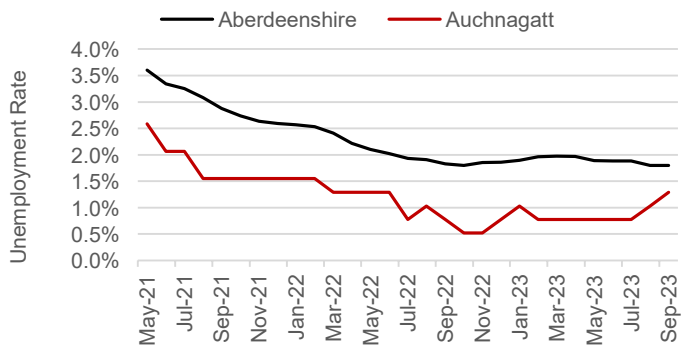
People on Universal Credit - Not In Employment



% of Working Age Population on Universal Credit and **Not In Employment** - Aberdeenshire Context (Aug 2023)



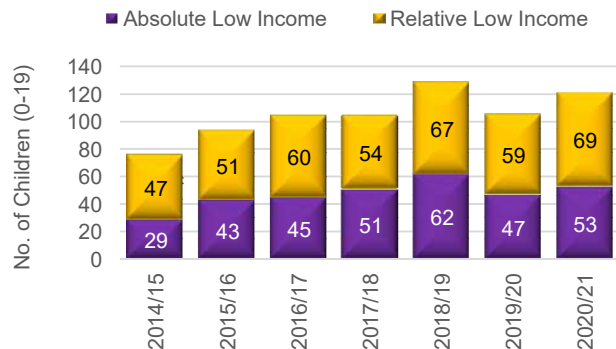
Alternative Claimant Count - Effective 'Unemployment Rate'



Achnagatt's Alternative Claimant Count (Unemployment Rate) - Aberdeenshire Context (Sep 2023)



Children in Low Income Families



% of Children (aged 0-19) in Low Income Families (2020/21)



Summary

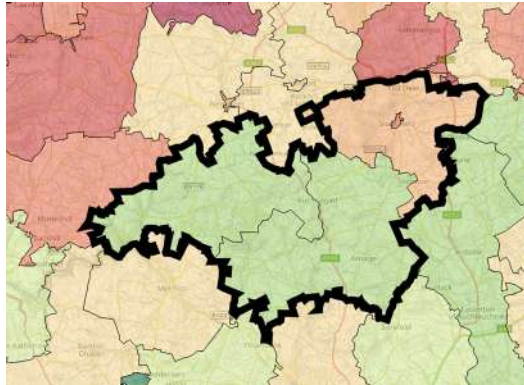
The number of people claiming Universal Credit (UC) - who are also in employment - has remained relatively steady over the last few months, contrary to the Shire-wide trend, which has increased. Latest figures show 2.0% of people aged 16-64 (who also have jobs) are claiming UC. This is one of the lowest on the spectrum in a Shire context. A similar picture emerges in relation to people on UC and not in employment.

Like Aberdeenshire, the unemployment rate in the IZ has fallen substantially since the September 2020 peak of 3.8%. Latest data suggests approximately 1.3% of the Working Age population is currently out-of-work, which is slightly less than the Aberdeenshire rate (1.8%).

Children living in low-income families are relatively uncommon. However, recent increases suggest the issue may be coming more to the fore over recent years, particularly since 2020/21.

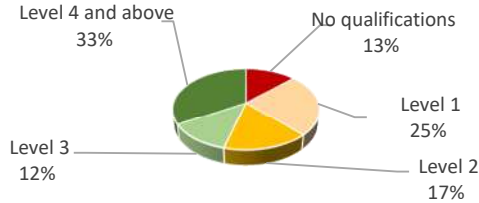
Auchnagatt Economic Data (3 of 3)

People With No Qualifications, Census 2011



Relatively low (green) to Relatively high (red)

% of Employees per Qualification Type



Summary

The employment numbers per broad industrial group relate to the kind of jobs within the area, which may be filled by those living outwith the IZ.

Major industries in terms of jobs in the area include the Construction sector, the Professional sector, Manufacturing and the Health sector.

There has been growth in the Agriculture, Mining & Health sectors. Jobs in this latter industry have increased by 50% since 2020.

Even with the growth highlighted above in these type of jobs, there has been a -1% decrease in jobs across the IZ between 2020 and 2022, suggesting this region may still be feeling the effects post-Covid.

The area appears to have attracted a slight increase of larger enterprises over the most recent year (i.e. companies with sales in excess of £500k).

It has however seen a fall in smaller businesses (i.e. companies with sales less than 499k).

Approximate Employment Count per Broad Industrial Group, Auchnagatt, 2020-22

Broad Industrial Group	2020	2021	2022	2020-22 % Diff.
Agriculture, forestry & fishing	25	20	35	40%
Mining, quarrying & utilities	30	35	45	50%
Manufacturing	75	100	75	0%
Construction	175	175	175	0%
Motor trades	15	15	15	0%
Wholesale	5	0	0	-100%
Retail	15	15	15	0%
Transport & storage (inc postal)	10	0	0	-100%
Accommodation & food services	10	10	5	-50%
Information & communication	0	0	0	0%
Financial & insurance	0	0	0	0%
Property	15	20	15	0%
Professional, scientific & technical	75	75	50	-33%
Business administration & support services	50	30	40	-20%
Public administration & defence	0	0	0	0%
Education	40	40	40	0%
Health	50	50	75	50%
Arts, entertainment, recreation & other services	20	20	20	0%
Total	610	605	605	-1%

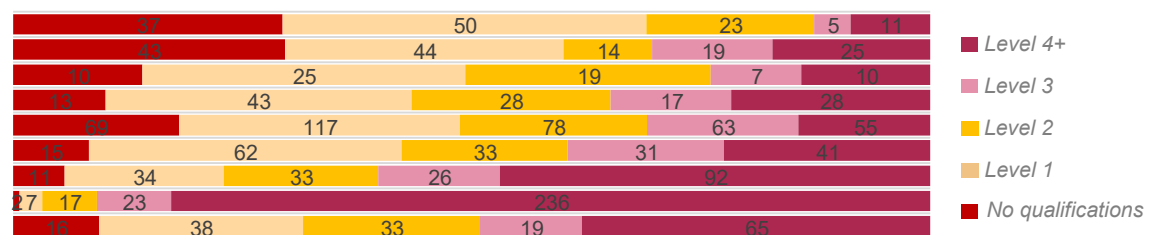
Approximate Number of Enterprises per Turnover Band (£), Auchnagatt, 2021-23

Turnover	2021	2022	2023	2021-23 % Diff.
£1m+	10	5	10	0%
£500-999k	15	15	20	33%
£200-499k	30	20	25	-17%
£100-199k	55	55	55	0%
£50-99k	60	55	55	-8%
£0-49k	55	45	40	-27%

Employees per Occupation Type, Census 2011

Elementary occupations	126
Process, plant and machine operatives	145
Sales and customer service occupations	71
Caring, leisure and other service occupations	129
Skilled trades occupations	382
Administrative and secretarial occupations	182
Associate professional and technical...	196
Professional occupations	285
Managers, directors and senior officials	171

Employees per Qualification & Occupation Type, Census 2011



Auchnagatt Housing Data



Relatively sparse / rural

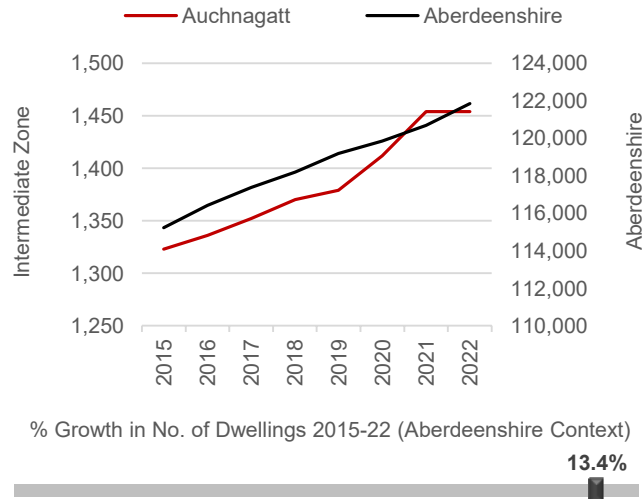
Dwellings per Hectare (2022)

0.11



Relatively dense / urban

Number of Dwellings, 2015-22



Summary

At 0.11 dwellings per hectare, this IZ is in the lower range of the spectrum between the rural and urban extremes.

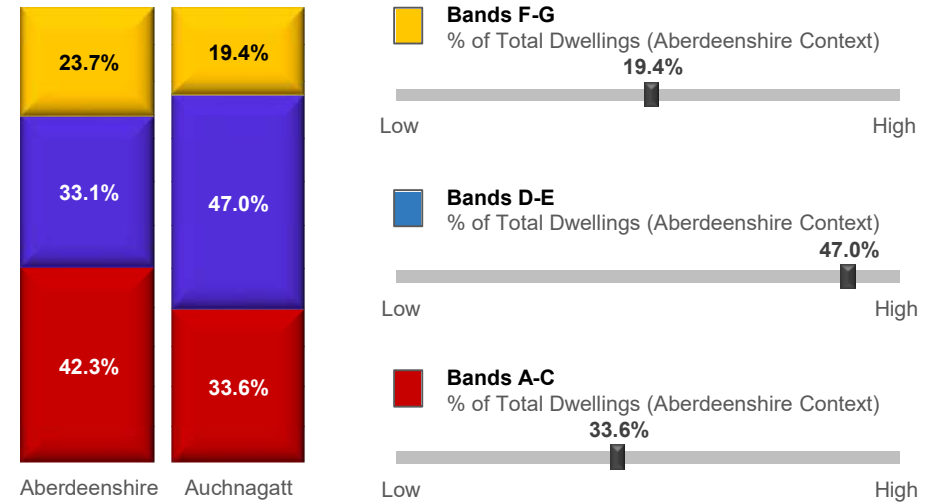
The number of dwellings in the IZ has increased by 13.4% since 2015, which is one of the highest on the spectrum in an Aberdeenshire context.

House building in the area has been on steady increase since 2015 – 2021 and has since plateaued.

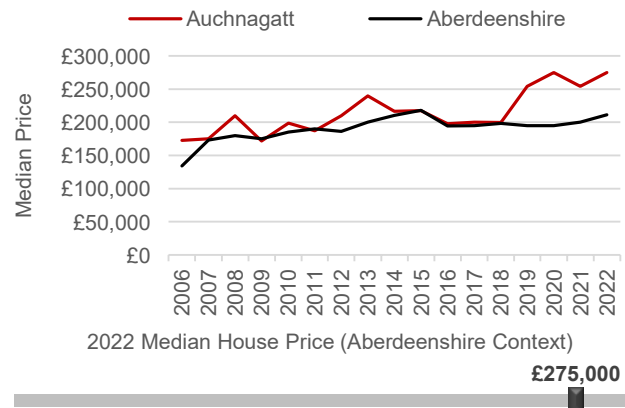
A relatively large proportion of the dwellings in this IZ (47.0%) fall within Council Tax Bands D-E. This puts the IZ towards the higher end of the spectrum. The rest of the properties are spread out relatively evenly between Bands F-G 19.4% and Bands A-C 33.6%.

The median house price is £275,000 which is significantly higher £64,005 higher than the Aberdeenshire average (£210,995).

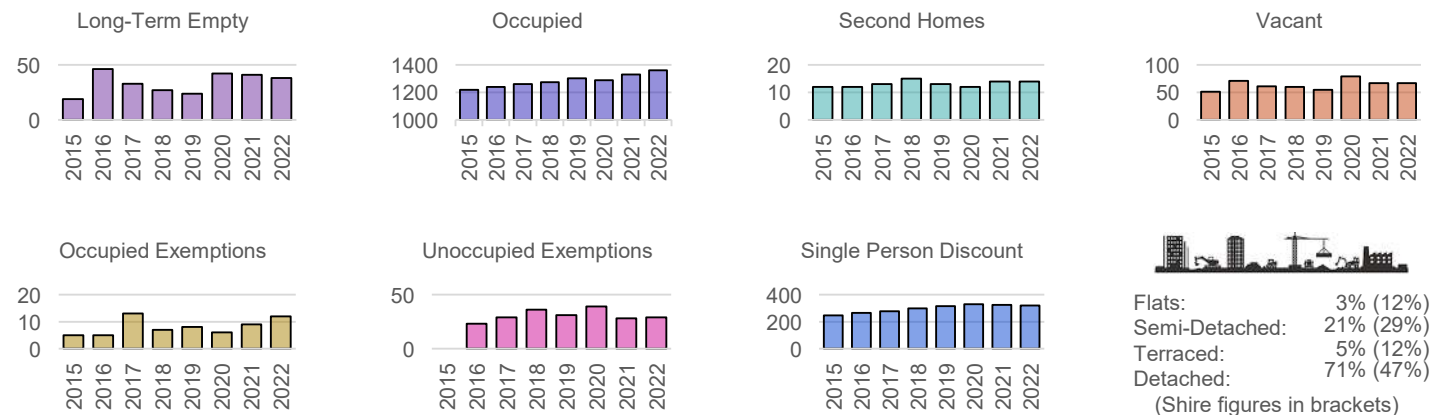
Proportion of Dwellings per Council Tax Band, 2022



Median Residential House Prices (Sales), 2006-22

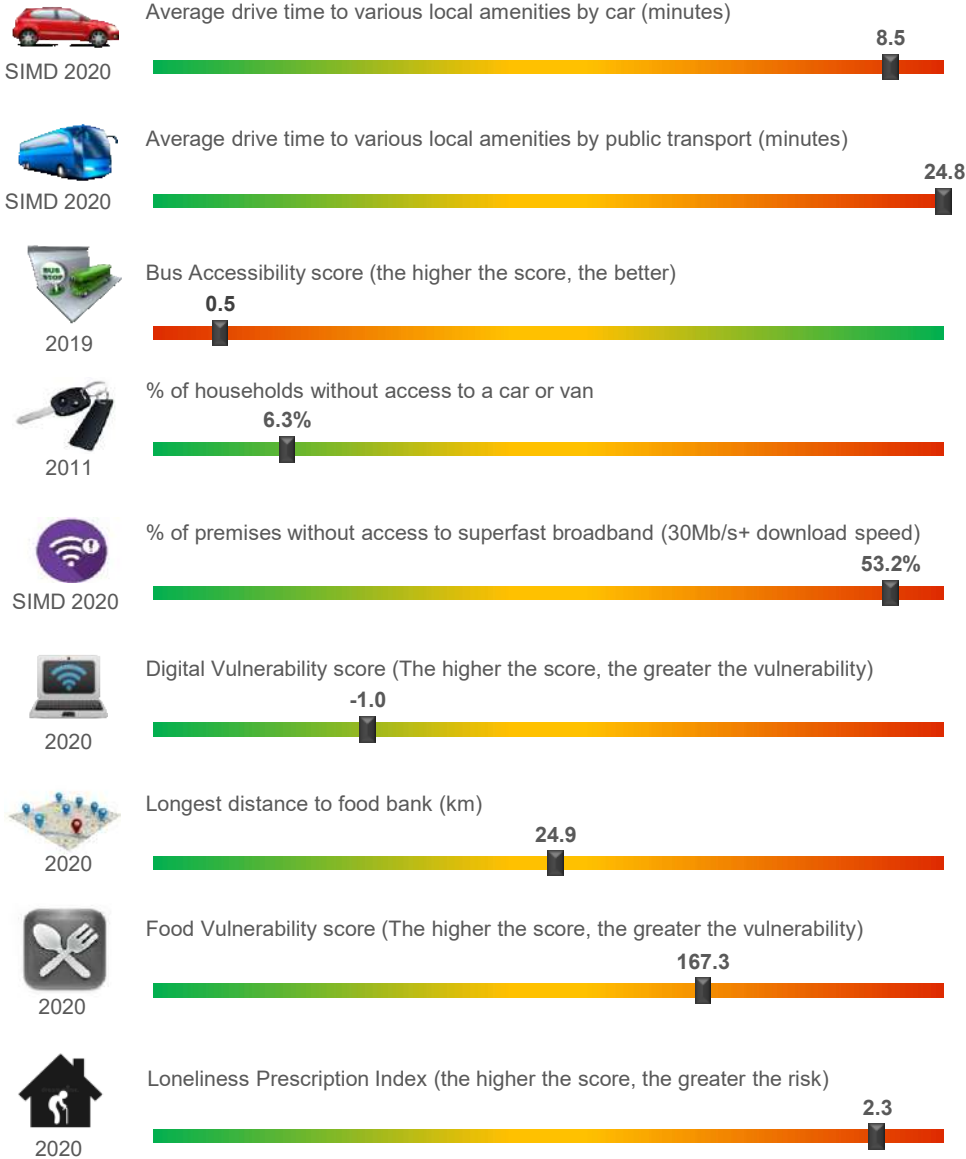


Housing Types, 2015-22 (Data on Flats, etc., relate to 2017 - the latest year for which data are available)

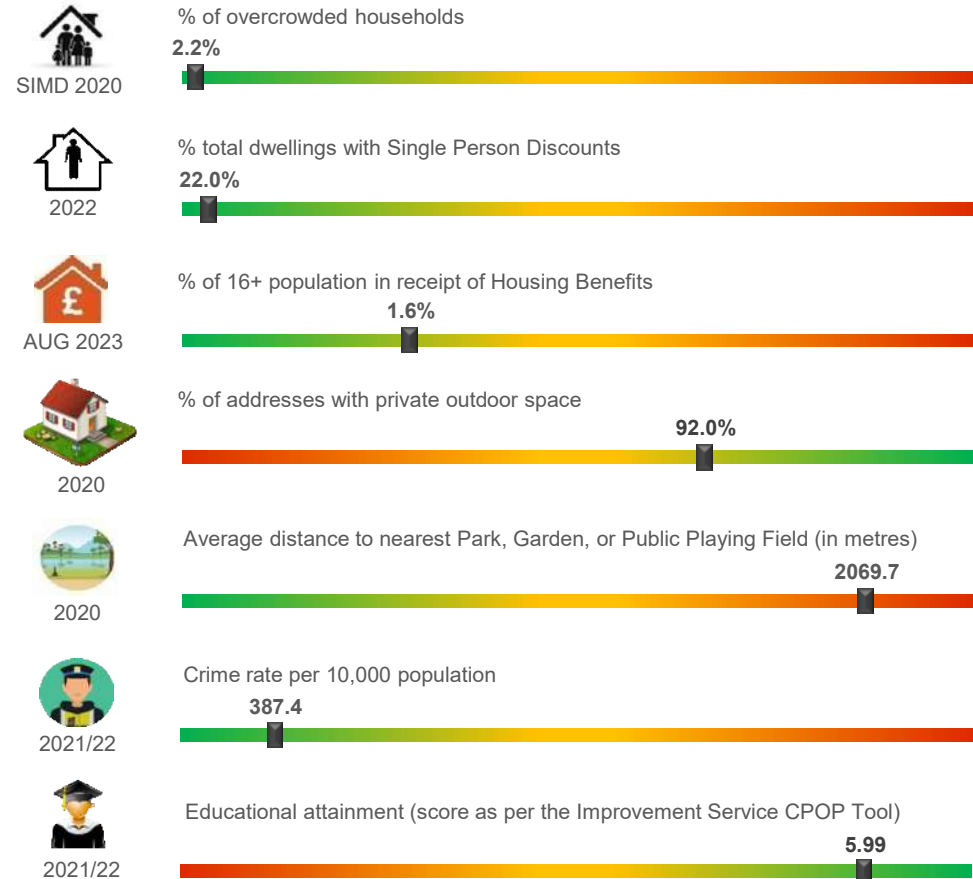


Auchnagatt Other Socio-Economic Data

Geographic Access / Digital Connectivity / Food Vulnerability / Loneliness Proxy



Housing / Environment / Crime Rate / Educational Attainment



Summary

According to the miscellaneous socio-economic indicators on this page, the IZ appears to be well served with a high Educational attainment score, low crime rate, little in the way of overcrowding, receipt of housing benefit or single person discounts. Although the average distance to nearest park/playing field is high, 92% of properties have their own private outdoor space.

Average drive times are high either by car or bus and Bus Accessibility is poor. Approximately 93.7% of households in this area have access to a car or van. Digital Vulnerability is classed as low however 53.2% of premises are without access to superfast broadband.