

Ythanside

Intermediate Zone Statistical Summary

2023

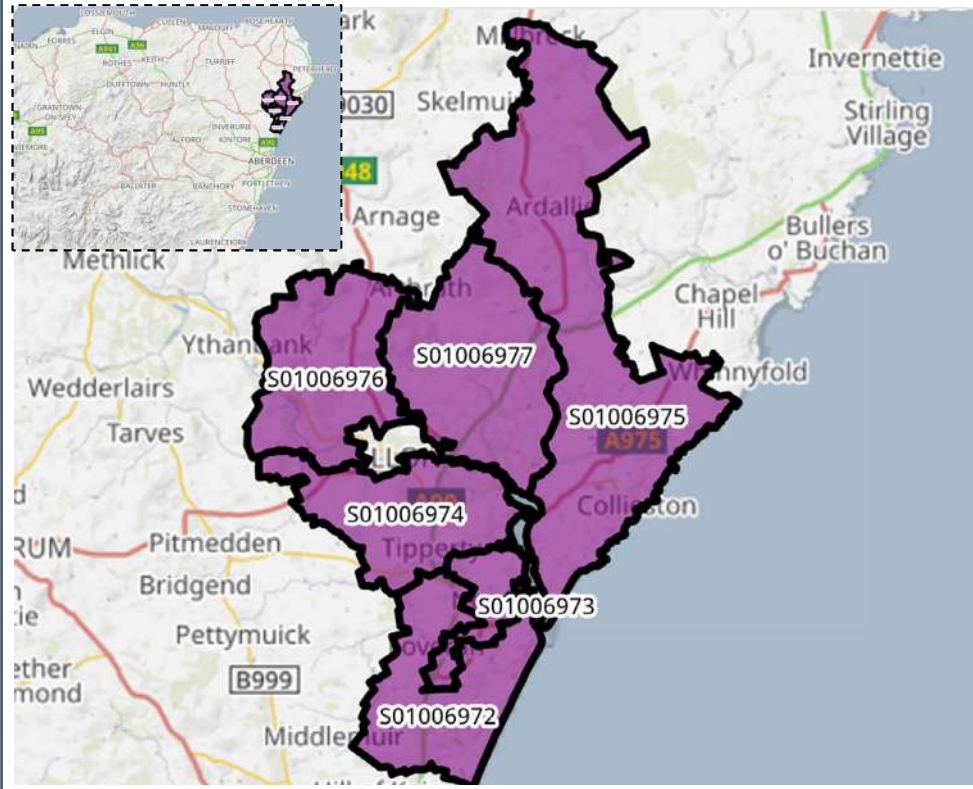


Daniel Stanford

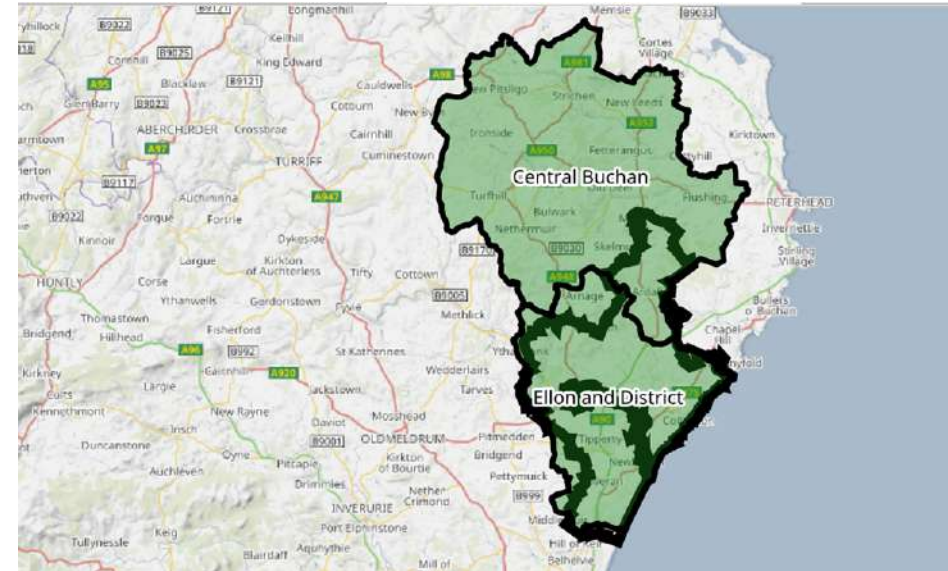


Ythanside

Data Zones Within the Intermediate Zone



Relevant Multi-Member Wards



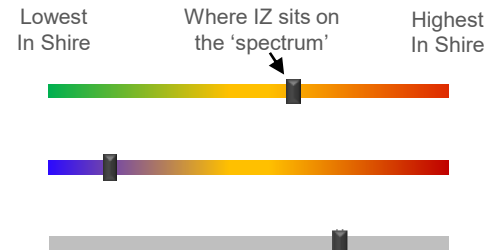
Notes on the Maps

The Map on the left shows the location and geographic area of the Aberchirder and Whitehills Intermediate Zone which contains five Data Zones. The Intermediate Zone lies mostly within /ward 1, Banff and District.

Spectrum Charts Explained

The following statistical pages frequently utilise spectrum charts as a visual aid to accompany an indicator. They are used to place the relevant Intermediate Zone (IZ) in the context of all other IZs in Aberdeenshire with regards to that indicator.

The charts to the right are examples of the spectrum charts used in this report. The black line represents where the IZ sits in the context of the highest and lowest figures in Aberdeenshire. If the black line is situated towards the left-hand side, the IZ recorded one of the lowest figures in Aberdeenshire. Conversely, if the black line is towards the right-hand side, it recorded one of the highest figures in Aberdeenshire.



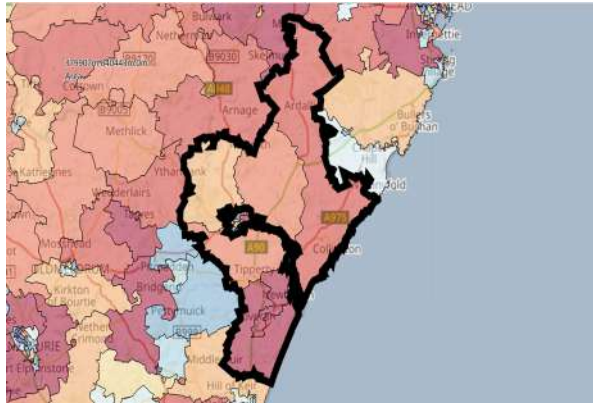
The green/red spectrum charts are the most common type. If the black line is situated towards the red end of the spectrum, it means the figure is objectively worse than most other IZs in Aberdeenshire and *vice versa*.

The blue/red spectrum charts are used in the demographic section to denote high population growth (red) and population decline (blue).

The grey spectrum charts are simply used to denote high and low in the context of Aberdeenshire, where the high / low figure is neither good nor bad. An example would be the proportion of dwellings that fall within Council Tax Bands F-G.

Ythanside Demographic Data

Map of Ythanside: Population Change (2014-2021)



Low Growth / Depopulation (Blue) High Growth (Red)

The population of the Ythanside IZ increased by 7.9% between 2014 and 2021. This is mainly down to the population spikes in DZ S01006973 where there was an increase of 254 (48.0%) and DZ S01006972 where there was an increase of 130 (20.8%).

Compared to 2014 Ythanside has seen significant increases in the older age groups especially with the 70+ age range with a 75.0% increase with 70–79-year-olds.

At 63.1%, the proportion of Working Age people in the IZ is above the average when looking at the spectrum in an Aberdeenshire context.

At 18.6%, there is a greater proportion of children in the IZ is than in most other areas across Aberdeenshire.

At 18.3% the number of older residents in the IZ is lower than most other areas of Aberdeenshire even with the spikes in population change among the 70+ age range.

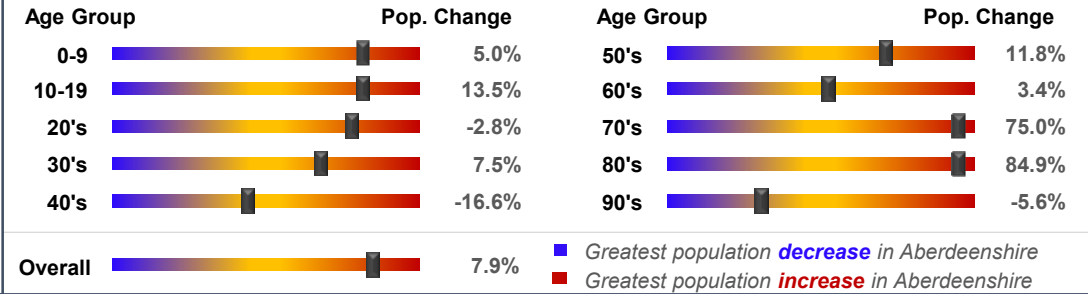
Population Change per Data Zone, 2014 & 2021

Data Zone	2014	2021	% Difference
S01006972	626	756	20.8%
S01006973	529	783	48.0%
S01006974	1052	977	-7.1%
S01006975	986	1036	5.1%
S01006976	452	447	-1.1%
S01006977	837	838	0.1%
Total	4482	4837	7.9%

Population per Age Group, Ythanside, 2014-2021



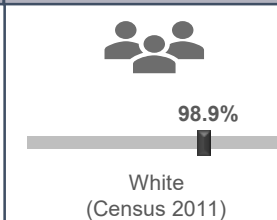
Rate of Population Change per Age Group, 2021 Compared to 2014



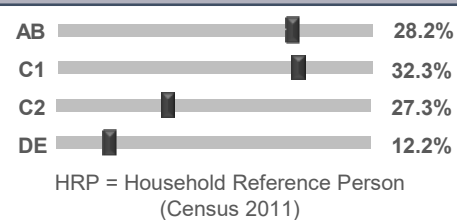
Country of Birth



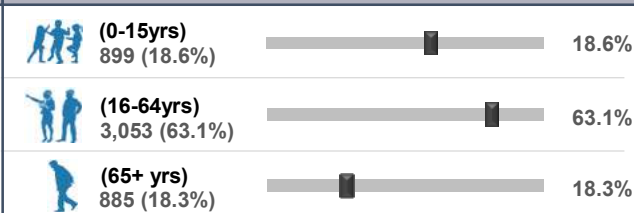
Ethnicity



Approximated Social Grade of HRP



Population per Broad Age Group, 2021



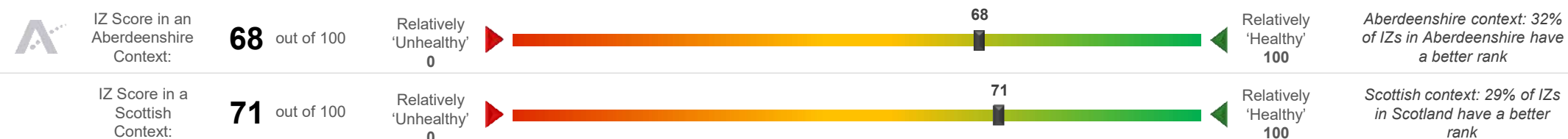
In 2021 4,837 people lived in Ythanside -- 899 (18.6%) were under 15 years of age, 3,053 (63.1%) were aged 16-64, and 885 (18.3%) were over 65.

The black markers show where these percentages sit in the context of Aberdeenshire: left = low; right = high.

SIMD 2020 Health Domain Rank		Universal Credit (UC) Limited Work Capability Households	Personal Independence Payments					
		<p>No. of Households in receipt of Universal Credit</p> <p>Intermediate Zone</p> <p>1.9%</p>	<p>No. of Cases with Entitlement</p> <p>Intermediate Zone</p> <p>2.0%</p>					
<p>Day-to-Day Activities</p> <p>Proportion of people whose day-to-day activities are limited a little or a lot - Aberdeenshire Context (Census 2011)</p> <p>12.2%</p>	<p>Health Rating</p> <p>Proportion of people who rated their health as either 'good' or 'very good' - Aberdeenshire Context (Census 2011)</p> <p>90.5%</p>	<p>According to monthly health-related benefits data, the number of households on Universal Credit has decreased since the summer 2022 peak, generally contradicting the Aberdeenshire trend, which has been on a steady upwards trajectory since late 2021. The number of households with Limited Work Capability or LWC (due to physical or mental health issues) has remained relatively steady throughout the period, now affecting 38 households, which is similar to the number seen over the summer peak. However, the IZ figure of 1.9% of households with at least 1 occupant assessed as having LWC is towards the lower end of the Shire spectrum.</p> <p>A higher proportion of the Working Age Population (2.0%) receive Personal Independence Payments (PIPs). This helps with some of the extra costs caused by long-term disability, ill-health or terminal ill-health. The IZ trend has likewise decreased since the 2022 peak.</p>						
<p>SIMD 2020 Health Domain Indicators per each Data Zone in the Ythanside Intermediate Zone (compared to Aberdeenshire average)</p>								
<p>SIMD Health Domain Indicator (Data Zones colour-coordinated with map) >></p>		S01006972	S01006973	S01006974	S01006975	S01006976	S01006977	Shire
Health Domain Rank (see map for colour-coded rankings) (the higher, the better)		6754	6040	6461	6519	6108	6126	5,254
Comparative Illness Factor (Scotland = 100) (the lower, the better)		30	35	35	35	35	40	58
Emergency stays in hospital (Scotland = 100) (the lower, the better)		45.9	76.1	57.3	52.2	71.9	65.1	71.5
Hospital stays related to alcohol misuse (Scotland = 100) (the lower, the better)		68.1	68.3	35.7	16.7	36.4	17.2	45.4
Hospital stays related to drug misuse (Scotland = 100) (the lower, the better)		23.9	25.9	0.0	14.2	32.7	49.6	30
Proportion of live singleton births of lowbirth weight (the lower, the better)		4.2%	8.0%	0.0%	3.6%	0.0%	0.0%	4.0%
Proportion of population being prescribed drugs for anxiety, depression or psychosis		11.3%	13.4%	14.1%	13.7%	14.9%	13.8%	15.6%
Standardised Mortality Ratio (Scotland = 100) (the lower, the better)		25	58	74	85	66	74	85

Ythanside Health Data (2 of 2)

Ythanside's position on the 'Health Spectrum' – Aberdeenshire and Scottish Context (the higher the score, the better)



Selection of ScotPHO indicators, Ythanside IZ compared to Aberdeenshire & Scotland (latest data)

Indicator	Latest Available Figures				IZ Trend	Indicator Measurement
	IZ	IZ's latest figure compared to:				
		Aberdeenshire	Scotland			
Alcohol-related hospital stays	155.2	-41.6%		-74.6%	Down	Rate per 100,000 pop.
All-cause mortality among the 15-44 year olds	56.1	-40.6%		-52.1%	Up	Rate per 100,000 pop.
Babies exclusively breastfed at 6-8 weeks	39.1	-1.5%		7.2%	Down	% of babies with a valid feeding status
Bowel screening uptake	72.4	-0.7%		6.8%	Up	% of eligible people (aged 50-74)
Child dental health in primary 1	69.4	-9.3%		-3.7%	Up	% of P1 pupils
Child dental health in primary 7	87.5	7.8%		12.5%	Up	% of P7 pupils
Child healthy weight in primary 1	71.7	-5.7%		1.9%	Down	% of P1 pupils
Deaths all ages	789.1	-25.5%		-33.2%	Down	Rate per 100,000 pop.
Developmental concerns at 27-30 months	0.7	-2.2%		-13.9%	Up	% of children reviewed
Early deaths from cancer (<75)	130.6	-0.9%		-12.7%	Down	Rate per 100,000 pop.
Early deaths from coronary heart disease (<75)	25.6	-32.2%		-51.3%	Down	Rate per 100,000 pop.
Female life expectancy	89.4	9.2%		10.7%	Up	Life expectancy at birth in years
Healthy birth weight	83.9	0.9%		-0.2%	Up	% of all singleton births
Immunisation uptake at 24 months - 6 in 1	99.4	1.6%		2.4%	Down	% of children in relevant age group
Immunisation uptake at 24 months - MMR	94.8	0.0%		0.5%	Down	% of children in relevant age group
Male life expectancy	82.8	6.5%		8.1%	Up	Life expectancy at birth in years
Maternal obesity	25.8	1.4%		-0.3%	Up	% of women at antenatal booking
Patients (65+) with multiple A&E hospitalisations	7593.7	20.7%		11.3%	Down	Rate per 100,000 pop.
Patients hospitalised with asthma	25.5	-20.1%		-62.7%	Down	Rate per 100,000 pop.
Patients hospitalised with COPD	88.2	-24.6%		-57.5%	Down	Rate per 100,000 pop.
Patients hospitalised with coronary heart disease	324.0	10.2%		-5.2%	Down	Rate per 100,000 pop.
Patients with emergency hospitalisations	4967.6	-5.9%		-31.3%	Down	Rate per 100,000 pop.
Premature births	11.1	1.8%		2.9%	Up	% of all live births
Uptake of the HPV vaccine in S3 girls	89.1	-0.3%		4.2%	Up	% of S3 girls

Based on the 24 health-related indicators in the table, this IZ is situated at the healthier end of the spectrum (68) in an Aberdeenshire context. The IZ fares slightly better when all IZs in Scotland are taken into consideration as it is in the top half nationally (71).

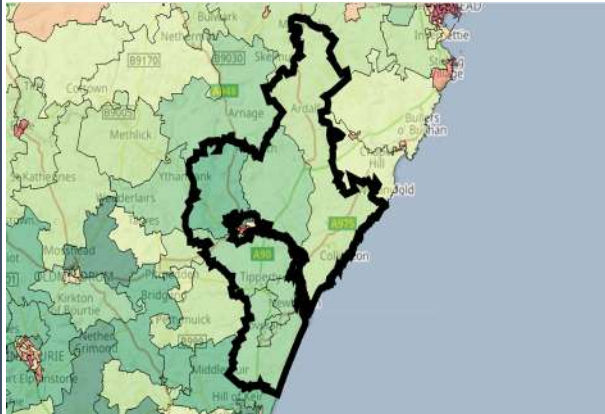
The area compares favourably to most other areas in Scotland in terms of the Hospitalisation rate for various illnesses: Developmental Concerns at 27 – 30 months, Female life expectancy, Patients with Emergency hospitalisations, Patients (65+) with multiple Emergency hospitalisations, Alcohol-related hospital stays, Deaths all ages, Patients hospitalised with COPD and Patients hospitalised with coronary heart disease.

Issues that may require further investigation include:
- Premature Births

With regards to each of the indicators listed above the IZ compares less favourably to other areas in Aberdeenshire and, in some instances, Scotland (and/or the trend is worsening).

Ythanside Economic Data (1 of 3)

Rank of Household Income per Data Zone (2023)



In terms of household income, this IZ is among the most affluent in Aberdeenshire. The median household income in 2023 equated to £52,139 which is £10,383 higher than the Shire average (£41,756).

Median household income ranges from £49,909 in DZ S01006975 to £55,422 in DZ S01006976.

Approximately 2.2% of households in this IZ earn less than £10,000 per year, which is lower-than-average (5.3%). This equates to roughly 45 households.

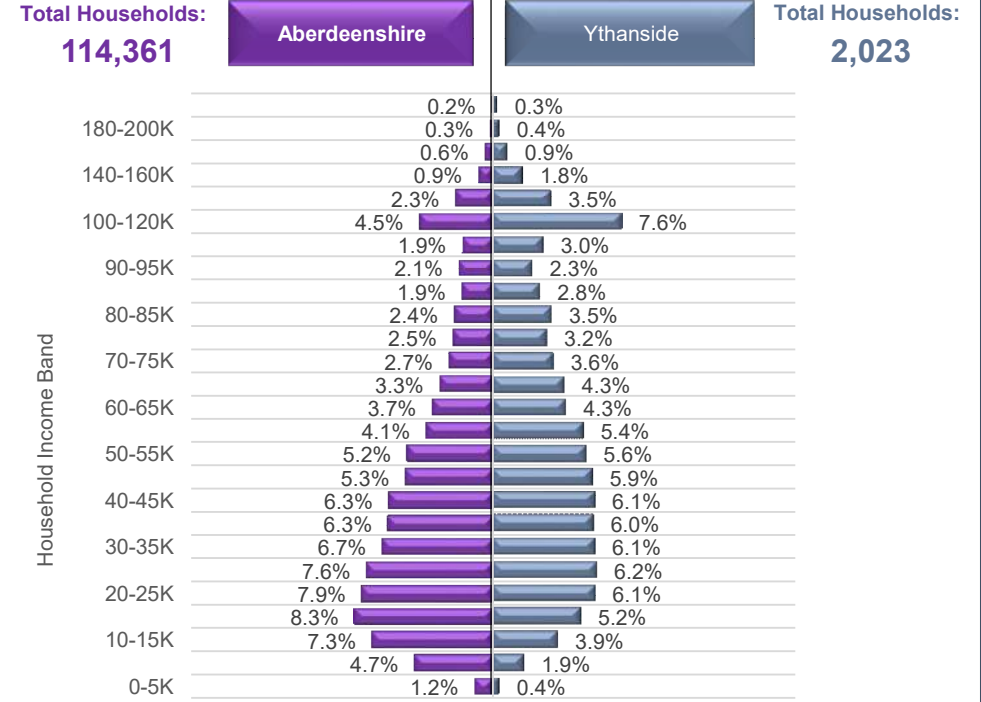
In addition, Approximately 14.4% of households in this IZ earn more than £100,000 per year, which is higher than average (10.1%). This equates to roughly 291 households.



Household Income per Data Zone (2023)

Data Zone	Households	Average Income	Median Income	Lower Quartile Income
S01006972	293	£ 60,068	£ 52,429	£ 31,357
S01006973	370	£ 58,400	£ 50,643	£ 29,674
S01006974	392	£ 62,694	£ 55,185	£ 33,072
S01006975	446	£ 57,501	£ 49,909	£ 29,731
S01006976	182	£ 62,612	£ 55,422	£ 34,393
S01006977	340	£ 58,610	£ 51,179	£ 30,901

Household Income per Band, Ythanside & Aberdeenshire (2023)



© CACI Limited 1996 - 2022 This report shall be used solely for academic, personal and/or non-commercial purposes. The applicable copyright notices can be found at <https://www.caci.co.uk/copyrightnotices.pdf>

Median Household Income (2023)



£52,139

Aberdeenshire: £41,756

£52,139



% of Households Earning Less Than £10k (2023)



<£10K

2.2%

Aberdeenshire: 5.3%

2.2%



% of Households Earning More Than £100k (2023)



>£100K

14.4%

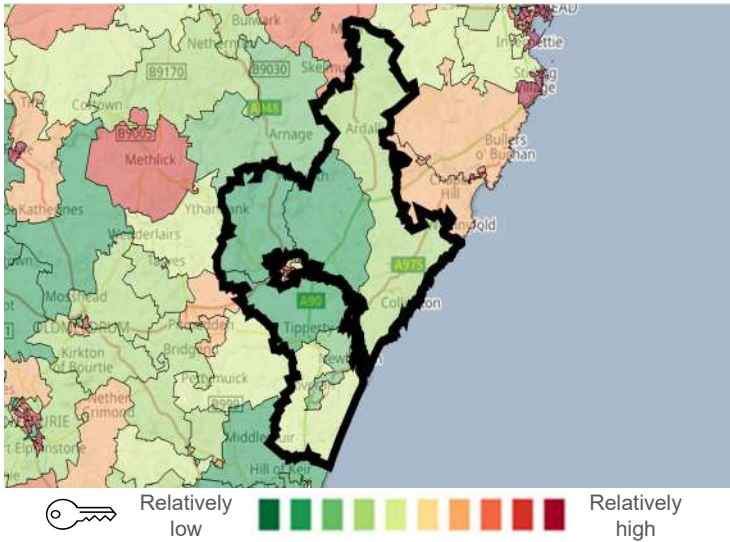
Aberdeenshire: 10.1%

14.4%

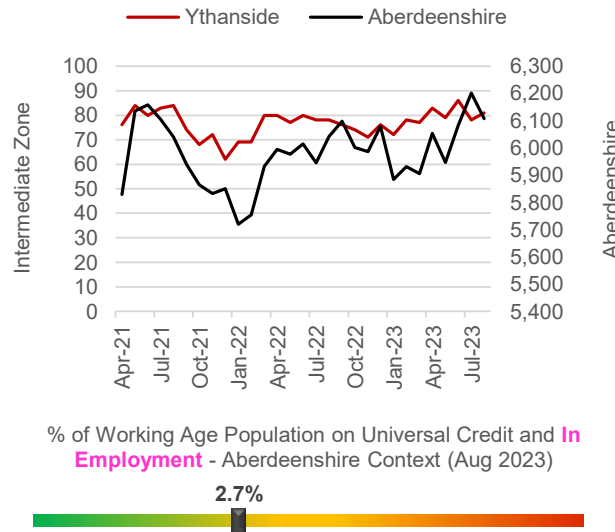


Ythanside Economic Data (2 of 3)

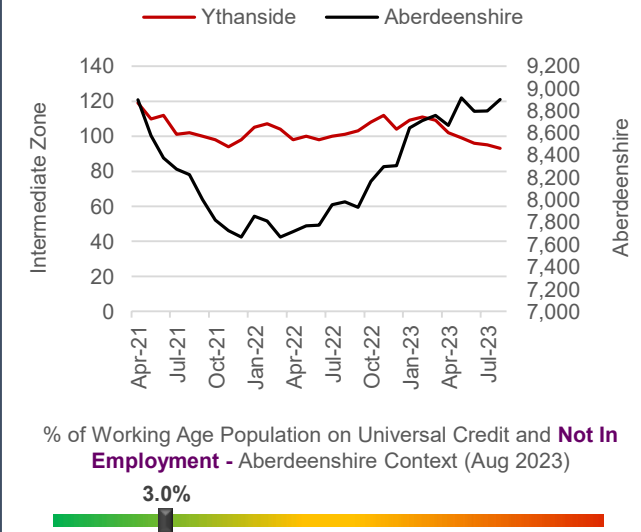
Latest Unemployment Rate - Ranking per Data Zone



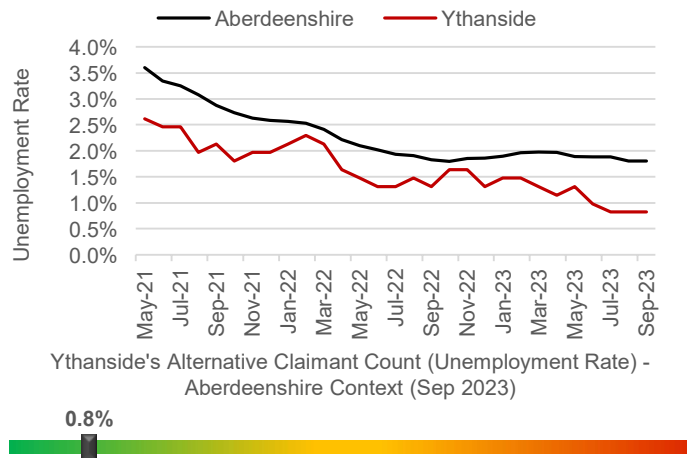
People on Universal Credit - In Employment



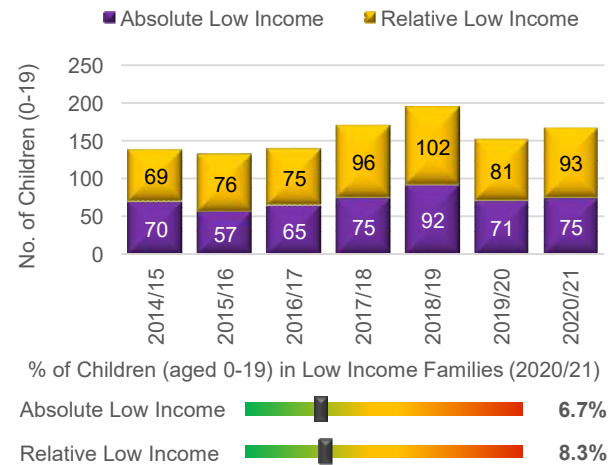
People on Universal Credit - Not In Employment



Alternative Claimant Count - Effective 'Unemployment Rate'



Children in Low Income Families



Summary

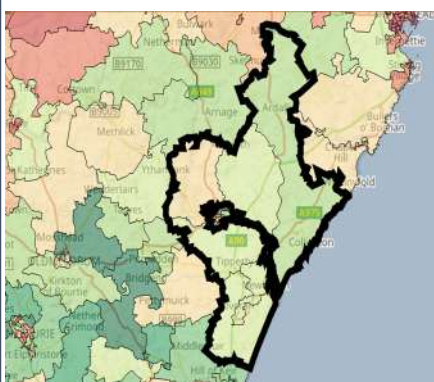
The number of people claiming Universal Credit (UC) - who are also in employment - has remained relatively steady over the last few months, contrary to the Shire-wide trend, which has increased. Latest figures show 2.7% of people aged 16-64 (who also have jobs) are claiming UC. This is towards the lower end of the spectrum in a Shire context. A similar picture emerges in relation to people on UC and not in employment.

Like Aberdeenshire, the unemployment rate in the IZ has fallen substantially since the September 2020 peak of 3.8%. Latest data suggests approximately 0.8% of the Working Age population is currently out-of-work, which is significantly lower than the Aberdeenshire rate (1.8%).

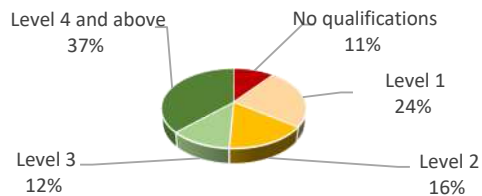
Children living in low-income families are relatively uncommon. However, recent increases suggest the issue may be coming more to the fore over recent years, particularly since 2020/21.

Ythanside Economic Data (3 of 3)

People With No Qualifications, Census 2011



% of Employees per Qualification Type



Summary

The employment numbers per broad industrial group relate to the kind of jobs within the area, which may be filled by those living outwith the IZ.

Major industries in terms of jobs in the area include the Manufacturing sector, the Professional sector, Construction and the Accommodation sector.

There has been a large growth in the Transport & Storage sector. Jobs in this industry have increased by 122% since 2020.

The growth in these type of jobs, has meant a 20% increase in jobs across the IZ between 2020 and 2022, suggesting a good degree of resilience post-Covid.

The area also appears to have attracted a number of larger enterprises over the most recent year (i.e. companies with sales in between £500k – 999k).

Approximate Employment Count per Broad Industrial Group, Ythanside, 2020-22

Broad Industrial Group	2020	2021	2022	2020-22 % Diff.
Agriculture, forestry & fishing	25	20	40	60%
Mining, quarrying & utilities	50	30	35	-30%
Manufacturing	350	400	400	14%
Construction	250	250	250	0%
Motor trades	5	5	10	100%
Wholesale	50	75	75	50%
Retail	100	100	100	0%
Transport & storage (inc postal)	45	50	100	122%
Accommodation & food services	125	150	175	40%
Information & communication	15	15	10	-33%
Financial & insurance	0	10	10	0%
Property	100	75	45	-55%
Professional, scientific & technical	200	225	300	50%
Business administration & support services	100	100	175	75%
Public administration & defence	10	10	10	0%
Education	100	100	100	0%
Health	10	10	10	0%
Arts, entertainment, recreation & other services	40	50	50	25%
Total	1,575	1,675	1,895	20%

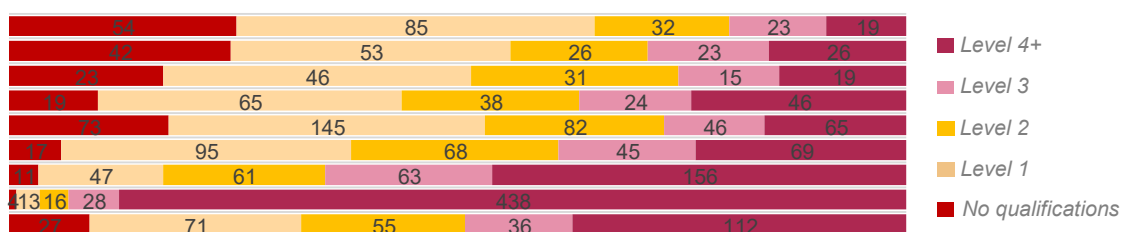
Approximate Number of Enterprises per Turnover Band (£), Ythanside, 2021-23

Turnover	2021	2022	2023	2021-23 % Diff.
£1m+	20	10	15	-25%
£500-999k	15	25	20	33%
£200-499k	40	40	30	-25%
£100-199k	105	100	90	-14%
£50-99k	50	60	60	20%
£0-49k	55	65	40	-27%

Employees per Occupation Type, Census 2011

Elementary occupations	213
Process, plant and machine operatives	170
Sales and customer service occupations	134
Caring, leisure and other service occupations	192
Skilled trades occupations	411
Administrative and secretarial occupations	294
Associate professional and technical...	338
Professional occupations	499
Managers, directors and senior officials	301

Employees per Qualification & Occupation Type, Census 2011



Ythanside Housing Data



Relatively sparse / rural

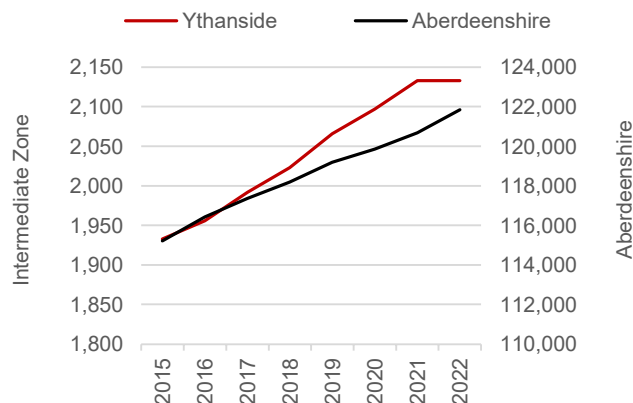
Dwellings per Hectare (2022)

0.11



Relatively dense / urban

Number of Dwellings, 2015-22



% Growth in No. of Dwellings 2015-22 (Aberdeenshire Context)

11.3%

Summary

At 0.11 dwellings per hectare, this IZ is in the lower range of the spectrum between the rural and urban extremes.

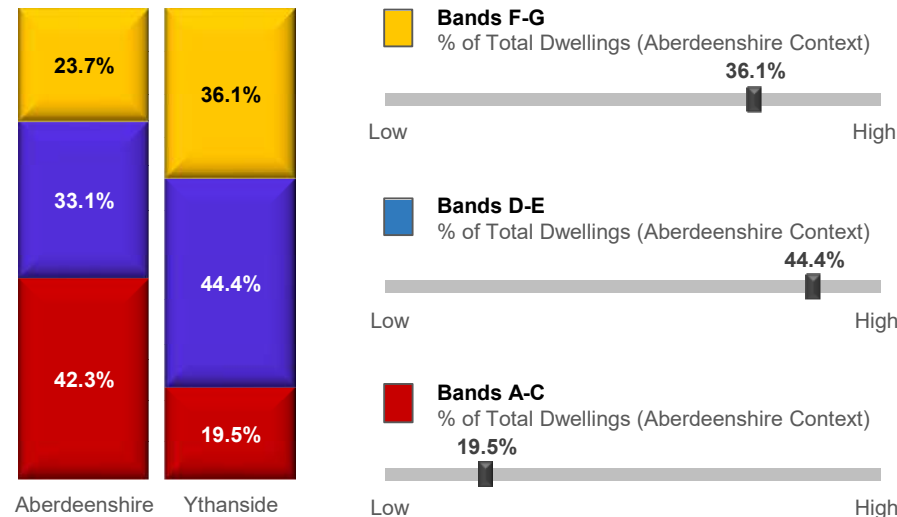
The number of dwellings in the IZ has increased by 11.3% since 2015, which is towards the higher end of the spectrum in an Aberdeenshire context.

House building in the area has been on steady increase since 2015 – 2021 and has since plateaued.

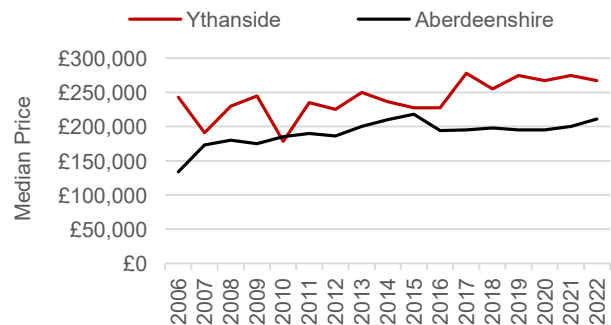
A relatively large proportion of the dwellings in this IZ (44.4%) fall within Council Tax Bands D-E. This puts the IZ towards the higher end of the spectrum. Relatively few properties fall within Bands A-C (19.5%).

The median house price is £267,000 which is significantly higher £56,005 higher than the Aberdeenshire average (£210,995).

Proportion of Dwellings per Council Tax Band, 2022



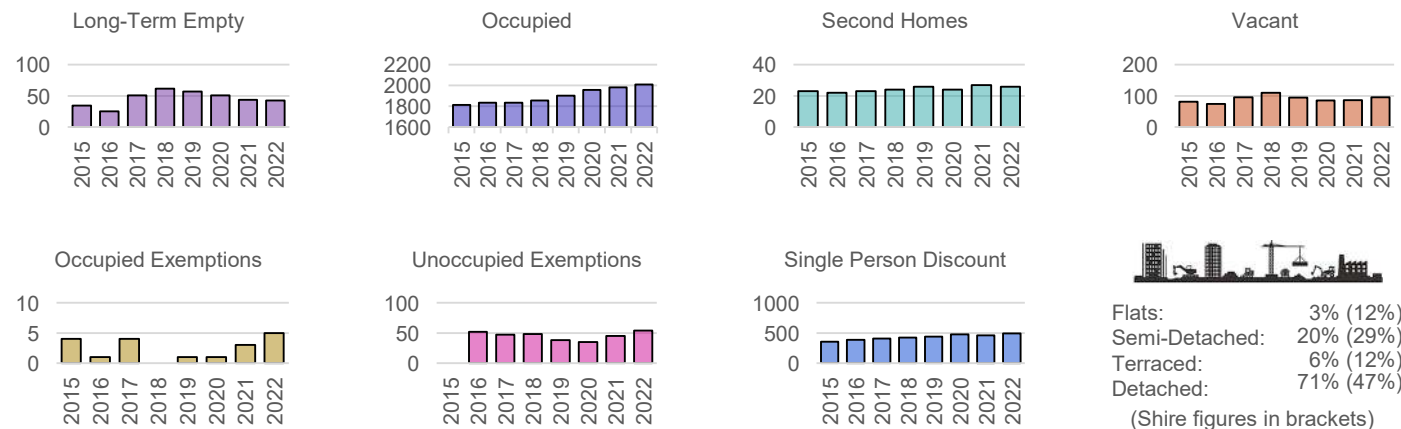
Median Residential House Prices (Sales), 2006-22



2022 Median House Price (Aberdeenshire Context)

£267,000

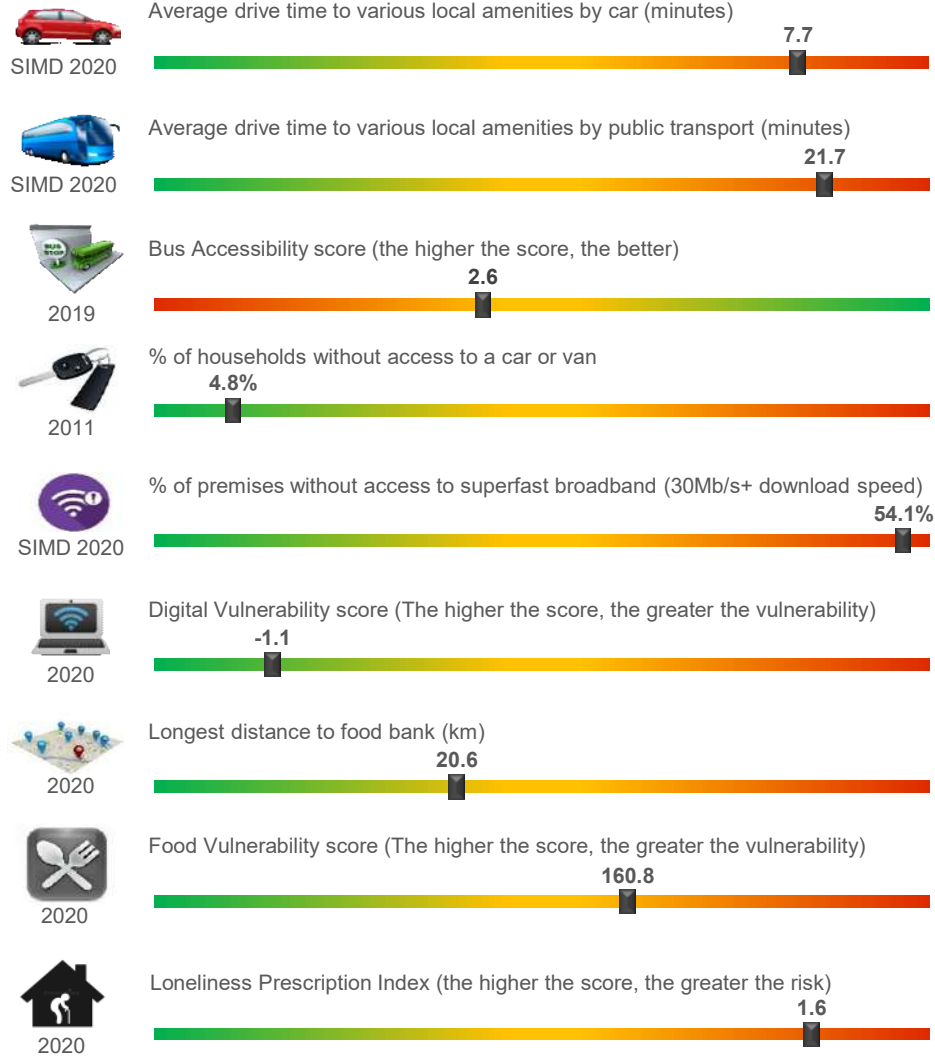
Housing Types, 2015-22 (Data on Flats, etc., relate to 2017 - the latest year for which data are available)



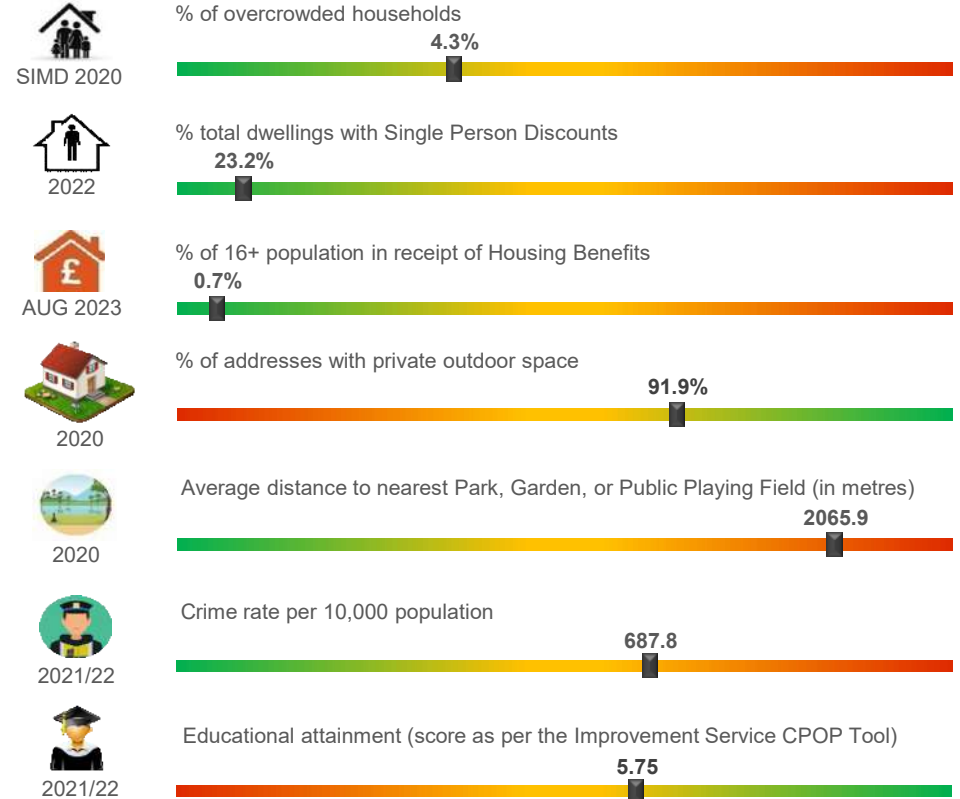
Other Indicators

Ythanside Other Socio-Economic Data

Geographic Access / Digital Connectivity / Food Vulnerability / Loneliness Proxy



Housing / Environment / Crime Rate / Educational Attainment



Summary

Text here...