

Barrahill

Intermediate Zone Statistical Summary

2023

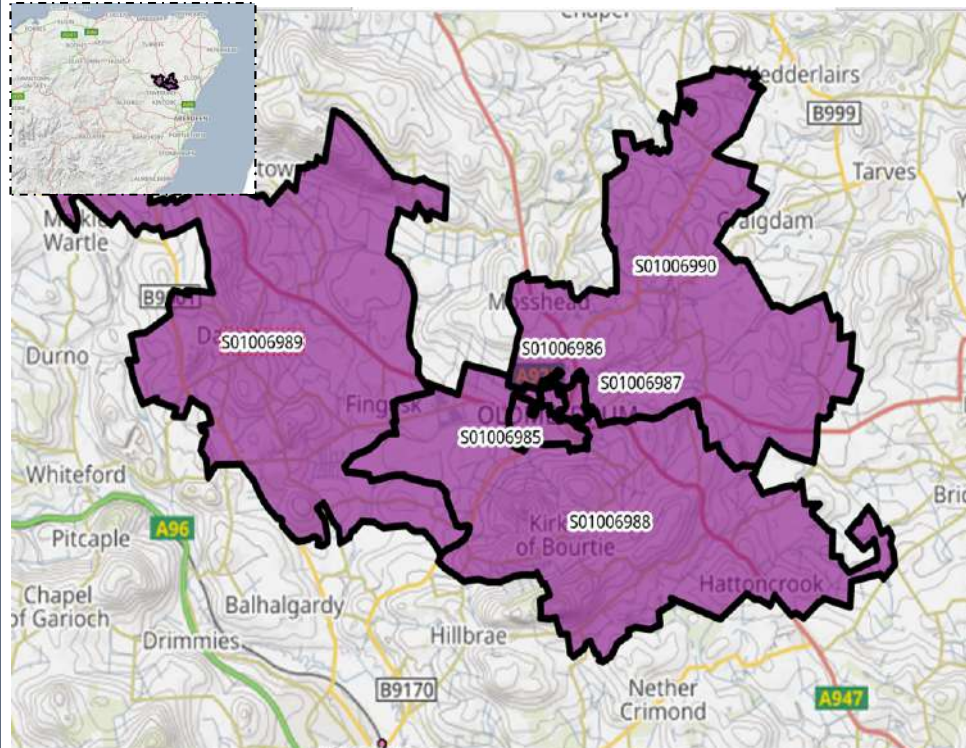


Daniel Stanford

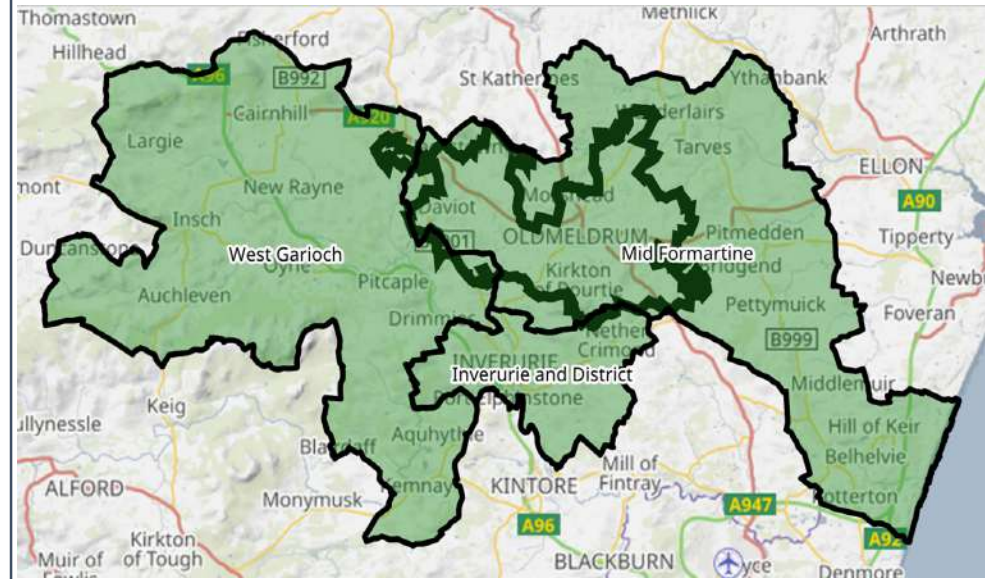


Barrhill

Data Zones Within the Intermediate Zone



Relevant Multi-Member Wards



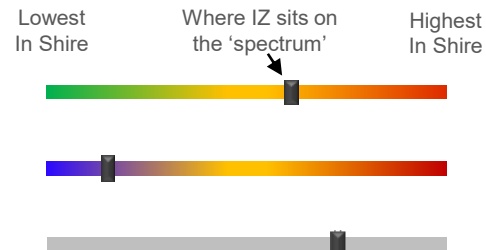
Notes on the Maps

The Map on the left shows the location and geographic area of the Barrhill Intermediate Zone which contains six Data Zones. The Intermediate Zone lies mostly within Ward 8 Mid Formartine, along with Ward 10, West Garioch and Ward 11, Inverurie and District..

Spectrum Charts Explained

The following statistical pages frequently utilise spectrum charts as a visual aid to accompany an indicator. They are used to place the relevant Intermediate Zone (IZ) in the context of all other IZs in Aberdeenshire with regards to that indicator.

The charts to the right are examples of the spectrum charts used in this report. The black line represents where the IZ sits in the context of the highest and lowest figures in Aberdeenshire. If the black line is situated towards the left-hand side, the IZ recorded one of the lowest figures in Aberdeenshire. Conversely, if the black line is towards the right-hand side, it recorded one of the highest figures in Aberdeenshire.



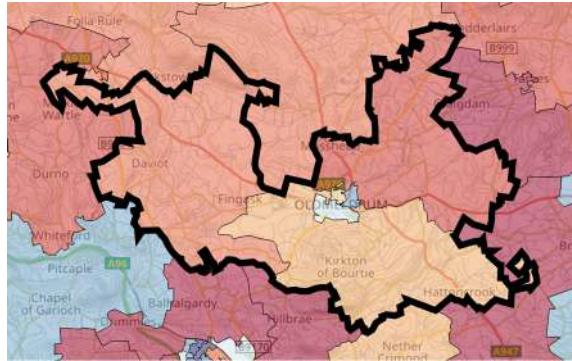
The green/red spectrum charts are the most common type. If the black line is situated towards the red end of the spectrum, it means the figure is objectively worse than most other IZs in Aberdeenshire and *vice versa*.

The blue/red spectrum charts are used in the demographic section to denote high population growth (red) and population decline (blue).

The grey spectrum charts are simply used to denote high and low in the context of Aberdeenshire, where the high / low figure is neither good nor bad. An example would be the proportion of dwellings that fall within Council Tax Bands F-G.

Barrahill Demographic Data

Map of Barrahill: Population Change (2014-2021)



The population of the Barrahill IZ decreased by 1.3% between 2014 and 2021. This is mainly down to the population shifts in DZ S01006987 where there was a decrease of 48 (6.8%) and DZ S01006985 where there was a decrease of 34 (3.4%).

Compared to 2014 Barrahill has seen significant increases in the older age groups especially with the 70+ age range with a 47.1% increase with 70–79-year-olds.

At 62.1%, the proportion of Working Age people in the IZ is at the higher side of the spectrum in an Aberdeenshire context.

At 20.4%, there is a greater proportion of children in the IZ is than in most other areas across Aberdeenshire.

At 17.5% the number of older residents in the IZ is lower than most other areas of Aberdeenshire even with the spikes in population change among the 70+ age range.

In the two DZ's that have seen population increases this is mostly down to an increase in the older age groups.

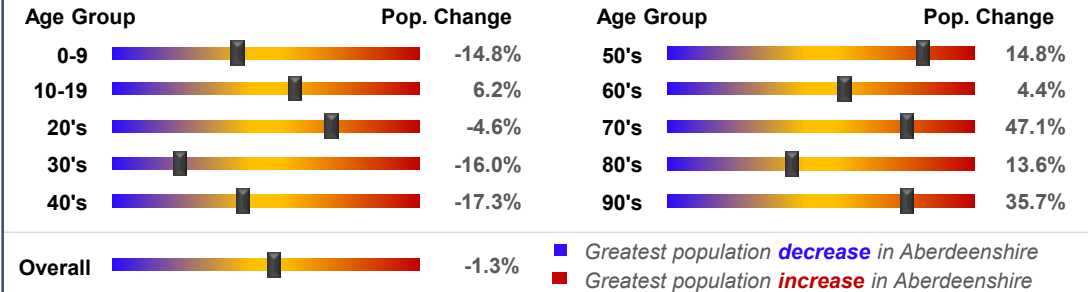
Population Change per Data Zone, 2014 & 2021

Data Zone	2014	2021	% Difference
S01006985	987	953	-3.4%
S01006986	714	698	-2.2%
S01006987	705	657	-6.8%
S01006988	664	655	-1.4%
S01006989	1077	1085	0.7%
S01006990	987	1021	3.4%
Total	5134	5069	-1.3%

Population per Age Group, Barrahill, 2014-2021



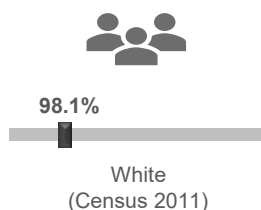
Rate of Population Change per Age Group, 2021 Compared to 2014



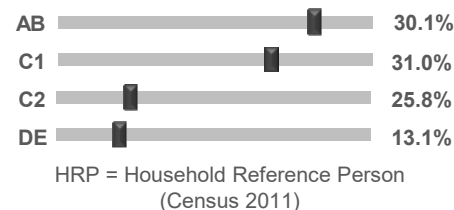
Country of Birth



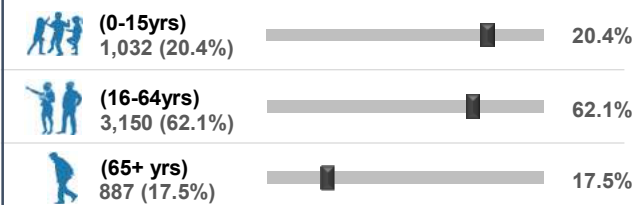
Ethnicity



Approximated Social Grade of HRP



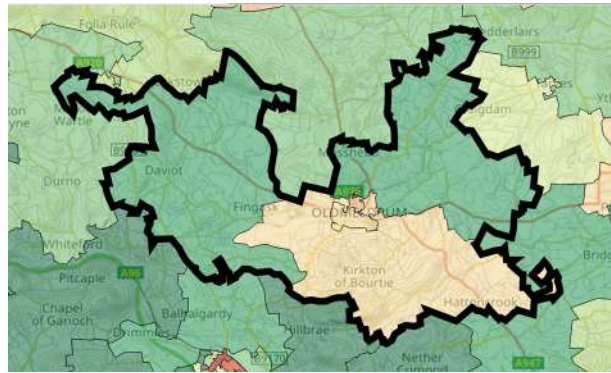
Population per Broad Age Group, 2021



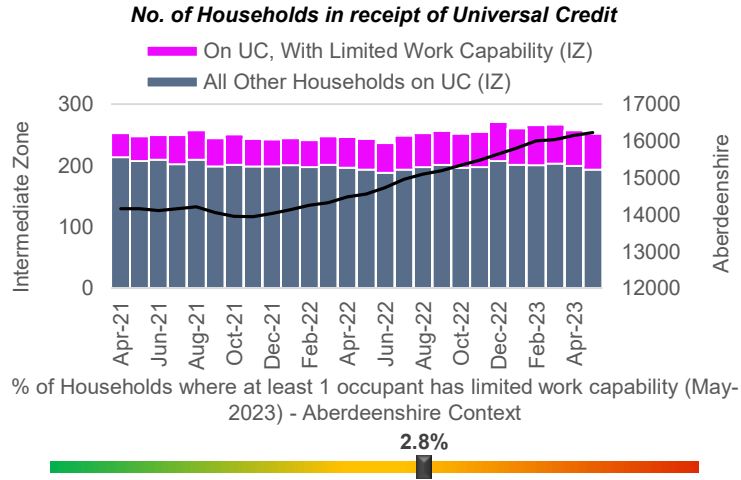
In 2021 5,069 people lived in Barrahill -- 1,032 (20.4%) were under 15 years of age, 3,150 (62.1%) were aged 16-64, and 887 (17.5%) were over 65.

The black markers show where these percentages sit in the context of Aberdeenshire: left = low; right = high.

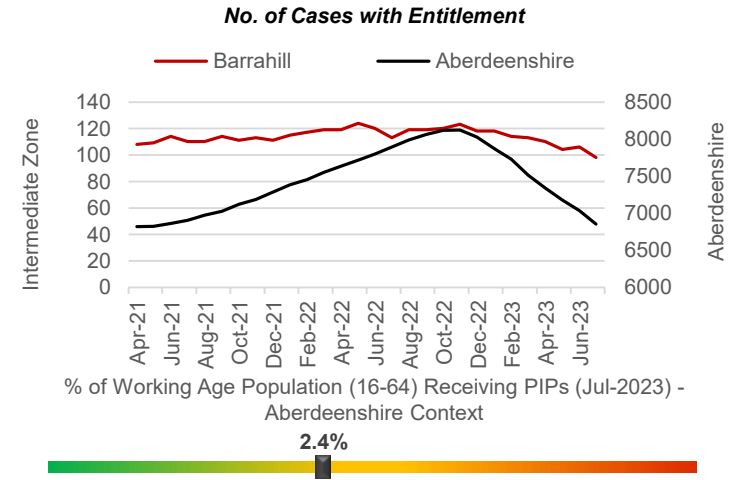
SIMD 2020 Health Domain Rank



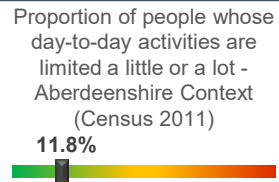
Universal Credit (UC) Limited Work Capability Households



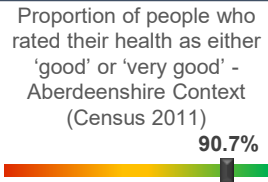
Personal Independence Payments



Day-to-Day Activities



Health Rating



According to monthly health-related benefits data, the number of households on Universal Credit has decreased since the summer 2022 peak, generally contradicting the Aberdeenshire trend, which has been on a steady upwards trajectory since late 2021. The number of households with Limited Work Capability or LWC (due to physical or mental health issues) has remained relatively steady throughout the period, now affecting 58 households, which is similar to the number seen over the summer peak. The IZ figure of 2.8% of households with at least 1 occupant assessed as having LWC is towards the middle of the Shire spectrum.

A lesser proportion of the Working Age Population (2.4%) receive Personal Independence Payments (PIPs). This helps with some of the extra costs caused by long-term disability, ill-health or terminal ill-health. The IZ trend has likewise decreased since the 2022 peak.

SIMD 2020 Health Domain Indicators per each Data Zone in the Barrahill Intermediate Zone (compared to Aberdeenshire average)

SIMD Health Domain Indicator (Data Zones colour-coordinated with map) >>

	S01006985	S01006986	S01006987	S01006988	S01006989	S01006990	Shire
Health Domain Rank (see map for colour-coded rankings) (the higher, the better)	5383	4955	5242	5573	6563	6772	5,254
Comparative Illness Factor (Scotland = 100) (the lower, the better)	45	60	45	60	30	30	58
Emergency stays in hospital (Scotland = 100) (the lower, the better)	74.4	83.6	86.9	72.2	63.4	57.4	71.5
Hospital stays related to alcohol misuse (Scotland = 100) (the lower, the better)	58.5	31.2	68.1	5.9	50.1	20.8	45.4
Hospital stays related to drug misuse (Scotland = 100) (the lower, the better)	51.5	0.0	0.0	0.0	29.1	0.0	30
Proportion of live singleton births of lowbirth weight (the lower, the better)	4.0%	0.0%	8.0%	0.0%	0.0%	8.2%	4.0%
Proportion of population being prescribed drugs for anxiety, depression or psychosis	15.5%	17.2%	15.1%	14.5%	11.9%	8.8%	15.6%
Standardised Mortality Ratio (Scotland = 100) (the lower, the better)	81	84	119	85	47	55	85

Barrahill Health Data (2 of 2)

Barrahill's position on the 'Health Spectrum' – Aberdeenshire and Scottish Context (the higher the score, the better)



IZ Score in an Aberdeenshire Context:

61 out of 100

Relatively 'Unhealthy' 0



Relatively 'Healthy' 100

Aberdeenshire context: 39% of IZs in Aberdeenshire have a better rank

IZ Score in a Scottish Context:

70 out of 100

Relatively 'Unhealthy' 0



Relatively 'Healthy' 100

Scottish context: 30% of IZs in Scotland have a better rank

Selection of ScotPHO indicators, Barrahill IZ compared to Aberdeenshire & Scotland (latest data)

Indicator	Latest Available Figures				IZ Trend	Indicator Measurement
	IZ	IZ's latest figure compared to:				
		Aberdeenshire	Scotland			
Alcohol-related hospital stays	270.5	1.8%		-55.7%	Down	Rate per 100,000 pop.
All-cause mortality among the 15-44 year olds	67.5	-28.4%		-42.3%	Down	Rate per 100,000 pop.
Babies exclusively breastfed at 6-8 weeks	48.8	8.2%		17.0%	Up	% of babies with a valid feeding status
Bowel screening uptake	76.0	3.0%		10.4%	Up	% of eligible people (aged 50-74)
Child dental health in primary 1	72.9	-5.9%		-0.2%	Up	% of P1 pupils
Child dental health in primary 7	85.7	6.0%		10.8%	Up	% of P7 pupils
Child healthy weight in primary 1	83.8	6.4%		14.0%	Up	% of P1 pupils
Deaths all ages	905.0	-14.5%		-23.3%	Down	Rate per 100,000 pop.
Developmental concerns at 27-30 months	2.6	-0.2%		-12.0%	Down	% of children reviewed
Early deaths from cancer (<75)	108.5	-17.6%		-27.5%	Up	Rate per 100,000 pop.
Early deaths from coronary heart disease (<75)	46.4	22.7%		-11.8%	Down	Rate per 100,000 pop.
Female life expectancy	84.0	2.7%		4.1%	Up	Life expectancy at birth in years
Healthy birth weight	82.7	-0.4%		-1.5%	Up	% of all singleton births
Immunisation uptake at 24 months - 6 in 1	98.6	0.8%		1.7%	Down	% of children in relevant age group
Immunisation uptake at 24 months - MMR	95.9	1.1%		1.5%	Down	% of children in relevant age group
Male life expectancy	79.4	2.2%		3.7%	Down	Life expectancy at birth in years
Maternal obesity	21.5	-3.0%		-4.6%	Up	% of women at antenatal booking
Patients (65+) with multiple A&E hospitalisations	6467.2	2.8%		-5.2%	Down	Rate per 100,000 pop.
Patients hospitalised with asthma	26.6	-16.8%		-61.2%	Down	Rate per 100,000 pop.
Patients hospitalised with COPD	103.4	-11.6%		-50.1%	Down	Rate per 100,000 pop.
Patients hospitalised with coronary heart disease	344.3	17.1%		0.8%	Down	Rate per 100,000 pop.
Patients with emergency hospitalisations	5436.8	3.0%		-24.9%	Down	Rate per 100,000 pop.
Premature births	11.5	2.2%		3.3%	Up	% of all live births
Uptake of the HPV vaccine in S3 girls	88.8	-0.6%		4.0%	Down	% of S3 girls

Based on the 24 health-related indicators in the table, this IZ is situated towards the healthier end of the spectrum (61) in an Aberdeenshire context. The IZ fares slightly better when all IZs in Scotland are taken into consideration as it is in the top half nationally (70).

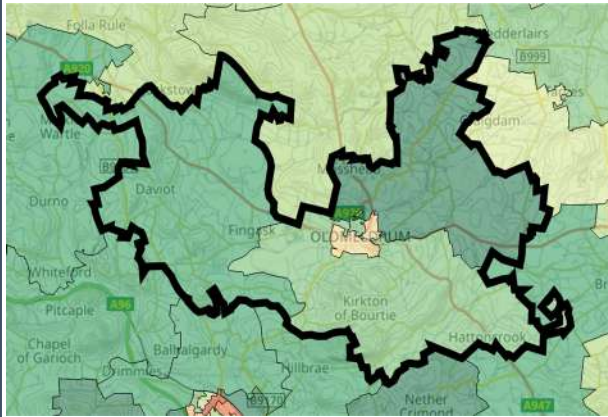
The area compares favourably to most other areas in Scotland in terms of the hospitalisation rate for some illnesses e.g. Alcohol related stays, all-cause mortality among the 15–44-year-olds, Bowel screening uptake, and patients hospitalised with asthma.

- Issues that may require further investigation include:
- Premature Births
 - Healthy Birth Weight
 - Immunisation uptake at 24 months – MMR

With regards to each of the indicators listed above the IZ compares less favourably to other areas in Aberdeenshire and, in some instances, Scotland (and/or the trend is worsening).

Barrahill Economic Data (1 of 3)

Rank of Household Income per Data Zone (2023)



In terms of household income, this IZ is among the most affluent in Aberdeenshire. The median household income in 2023 equated to £50,141 which is £8,385 higher than the Shire average (£41,756).

Median household income ranges from £40,352 in DZ S01006985 to £41,457 in DZ S01006990

Approximately 3.0% of households in this IZ earn less than £10,000 per year, which is lower-than-average (5.3%). This equates to roughly 61 households.

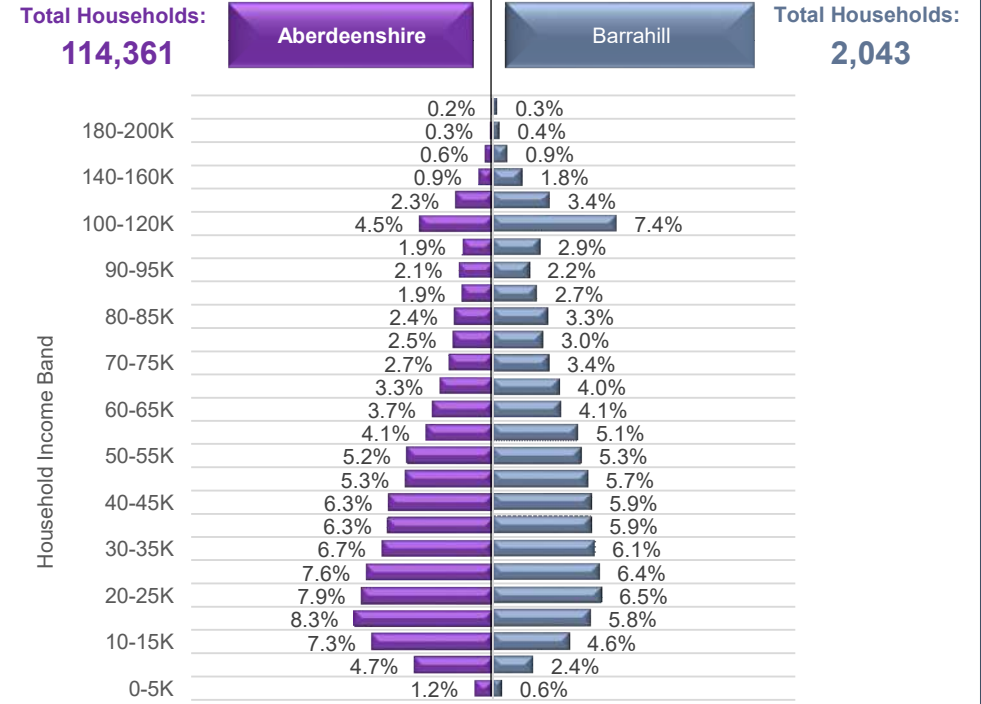
In addition, Approximately 14.2% of households in this IZ earn more than £100,000 per year, which is higher than average (10.1%). This equates to roughly 290 households.



Household Income per Data Zone (2023)

Data Zone	Households	Average Income	Median Income	Lower Quartile Income
S01006985	435	£ 48,665	£ 40,352	£ 23,169
S01006986	264	£ 60,896	£ 52,917	£ 30,772
S01006987	308	£ 49,725	£ 41,457	£ 23,303
S01006988	245	£ 59,623	£ 52,141	£ 30,956
S01006989	420	£ 64,391	£ 56,544	£ 34,203
S01006990	371	£ 67,208	£ 59,658	£ 37,090

Household Income per Band, Barrahill & Aberdeenshire (2023)



© CACI Limited 1996 - 2022 This report shall be used solely for academic, personal and/or non-commercial purposes. The applicable copyright notices can be found at <https://www.caci.co.uk/copyrightnotices.pdf>

Median Household Income (2023)



£50,141

Aberdeenshire: £41,756

£50,141



% of Households Earning Less Than £10k (2023)



<£10K

3.0%

Aberdeenshire: 5.3%

3.0%



% of Households Earning More Than £100k (2023)



>£100K

14.2%

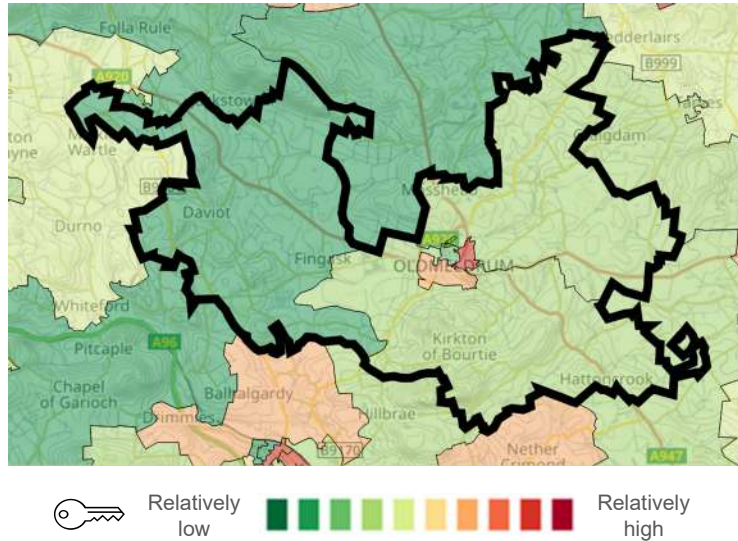
Aberdeenshire: 10.1%

14.2%

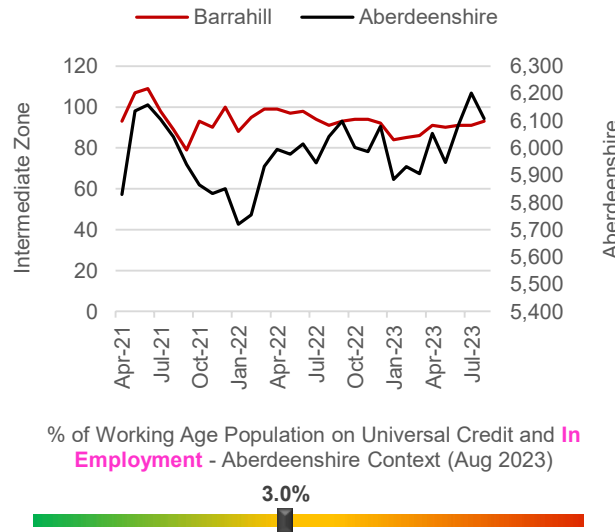


Barrhill Economic Data (2 of 3)

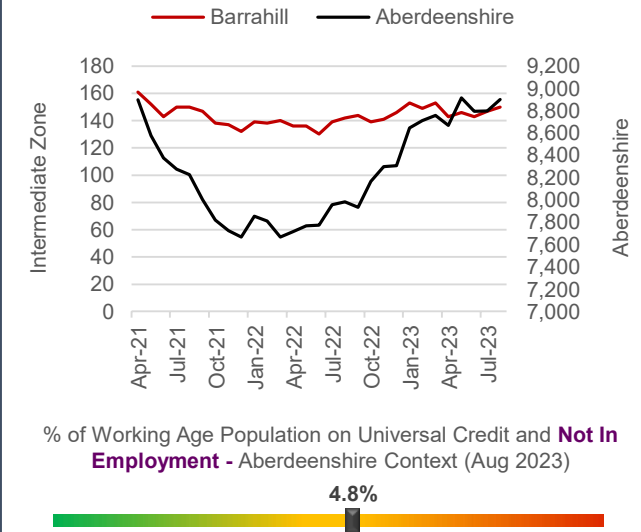
Latest Unemployment Rate - Ranking per Data Zone



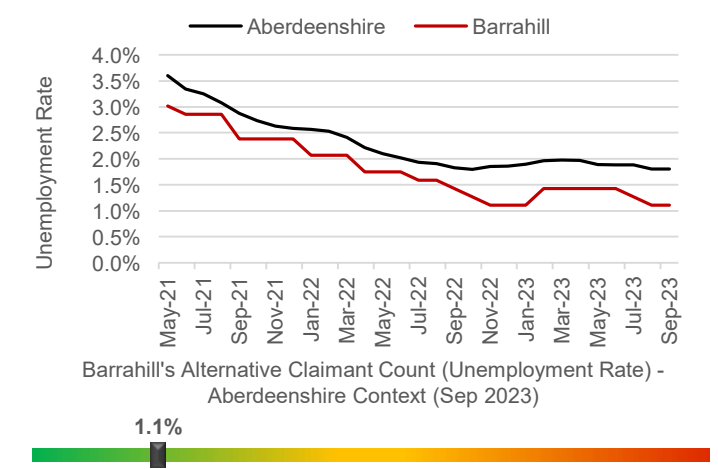
People on Universal Credit - In Employment



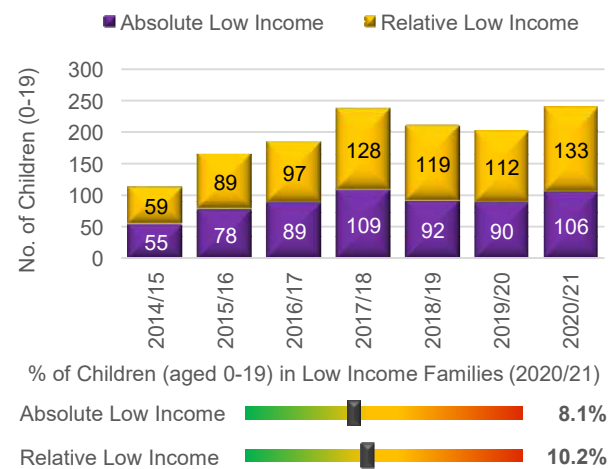
People on Universal Credit - Not In Employment



Alternative Claimant Count - Effective 'Unemployment Rate'



Children in Low Income Families



Summary

The number of people claiming Universal Credit (UC) - who are also in employment - has remained relatively steady over the last few months, contrary to the Shire-wide trend, which has increased. Latest figures show 3.0% of people aged 16-64 (who also have jobs) are claiming UC. This is towards the middle of the spectrum in a Shire context. A similar picture emerges in relation to people on UC and not in employment.

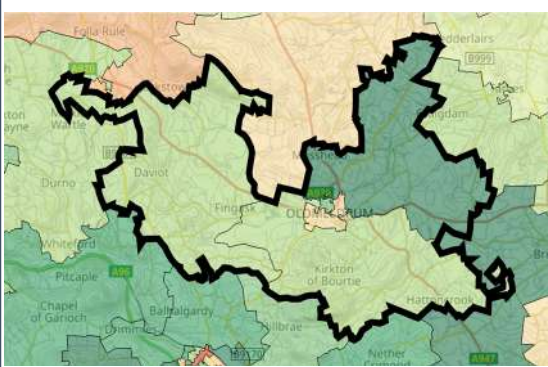
Like Aberdeenshire, the unemployment rate in the IZ has fallen substantially since the September 2020 peak of 3.8%. Latest data suggests approximately 1.1% of the Working Age population is currently out-of-work, which is slightly lower than the Aberdeenshire rate (1.8%).

Children living in low-income families are relatively uncommon. However, recent increases suggest the issue may be coming more to the fore over recent years, particularly since 2020/21.

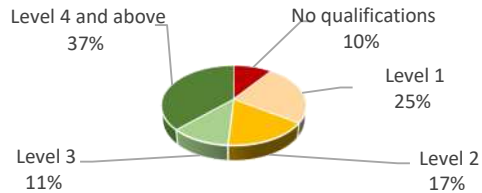
Economic Indicators

Barrahill Economic Data (3 of 3)

People With No Qualifications, Census 2011



% of Employees per Qualification Type



Summary

The employment numbers per broad industrial group relate to the kind of jobs within the area, which may be filled by those living outwith the IZ.

Major industries in terms of jobs in the area include the Manufacturing sector, the Business Administration sector, Accommodation and the Education sector.

There has been a large growth in Property sector. Jobs in this industry have triples since 2020.

The growth in these type of jobs, has meant a 7% increase in jobs across the IZ between 2020 and 2022, suggesting a good degree of resilience post-Covid.

The area also appears to have attracted a greater number of larger enterprises over the most recent year (i.e. companies with sales in excess of £1 million).

Approximate Employment Count per Broad Industrial Group, Barrahill, 2020-22

Broad Industrial Group	2020	2021	2022	2020-22 % Diff.
Agriculture, forestry & fishing	10	10	10	0%
Mining, quarrying & utilities	25	20	20	-20%
Manufacturing	225	225	300	33%
Construction	150	175	200	33%
Motor trades	35	50	50	43%
Wholesale	50	75	75	50%
Retail	75	100	75	0%
Transport & storage (inc postal)	125	150	100	-20%
Accommodation & food services	200	225	250	25%
Information & communication	15	5	5	-67%
Financial & insurance	0	0	10	0%
Property	10	30	30	200%
Professional, scientific & technical	300	250	200	-33%
Business administration & support services	250	350	300	20%
Public administration & defence	150	100	125	-17%
Education	300	300	300	0%
Health	125	125	125	0%
Arts, entertainment, recreation & other services	125	150	150	20%
Total	2,170	2,340	2,325	7%

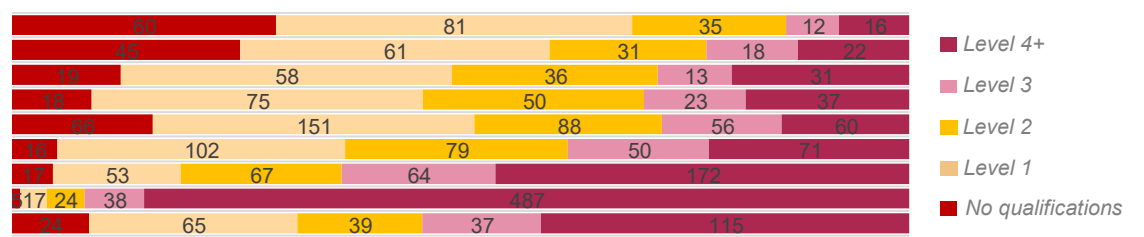
Approximate Number of Enterprises per Turnover Band (£), Barrahill, 2021-23

Turnover	2021	2022	2023	2021-23 % Diff.
£1m+	5	5	15	200%
£500-999k	20	20	10	-50%
£200-499k	25	30	35	40%
£100-199k	85	80	75	-12%
£50-99k	55	55	40	-27%
£0-49k	30	40	40	33%

Employees per Occupation Type, Census 2011

Elementary occupations	204
Process, plant and machine operatives	177
Sales and customer service occupations	157
Caring, leisure and other service occupations	203
Skilled trades occupations	421
Administrative and secretarial occupations	318
Associate professional and technical...	373
Professional occupations	571
Managers, directors and senior officials	280

Employees per Qualification & Occupation Type, Census 2011



Barrahill Housing Data



Relatively sparse / rural

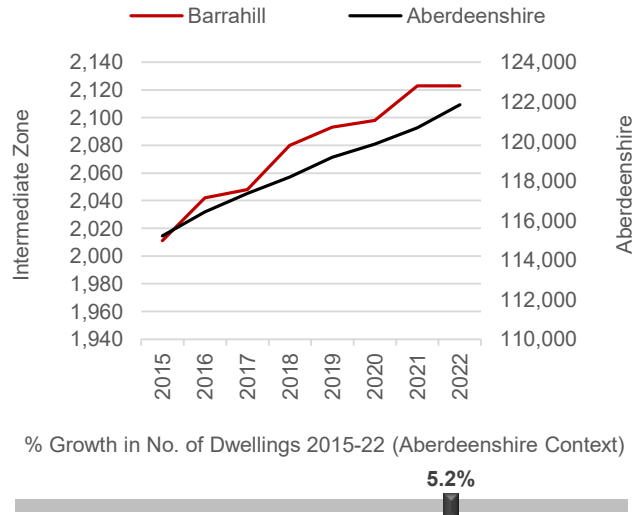
Dwellings per Hectare (2022)

0.30



Relatively dense / urban

Number of Dwellings, 2015-22



Summary

At 0.30 dwellings per hectare, this IZ is in the middle range of the spectrum between the rural and urban extremes.

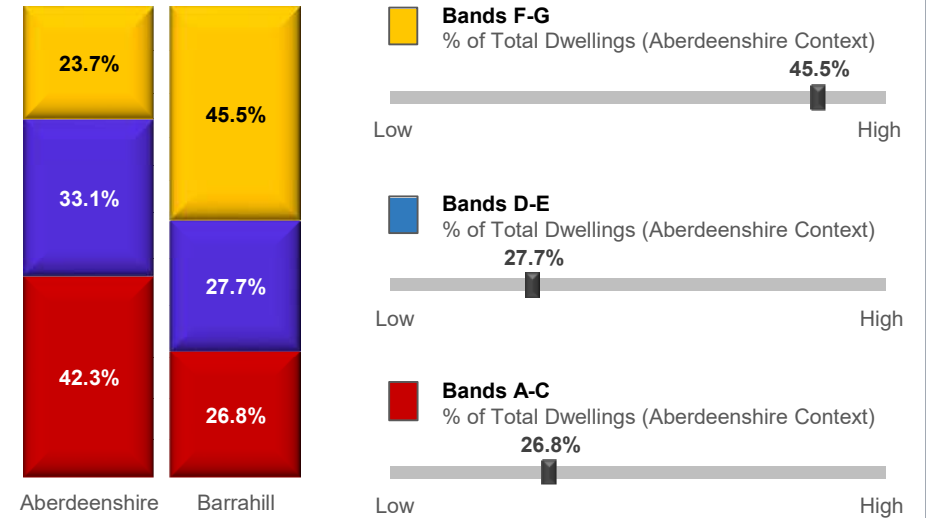
The number of dwellings in the IZ has increased by 5.2% since 2015, which is towards the higher end of the spectrum in an Aberdeenshire context.

House building in the area has been on steady increase since 2015 – 2021 and has since plateaued.

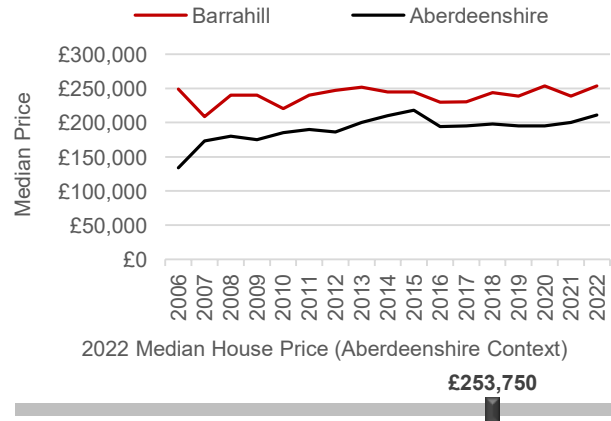
A relatively large proportion of the dwellings in this IZ (45.5%) fall within Council Tax Bands F-G. This puts the IZ towards the higher end of the spectrum. Relatively few properties fall within Bands A-C (26.8%).

The median house price is £253,750 which is significantly higher £42,755 higher than the Aberdeenshire average (£210,995).

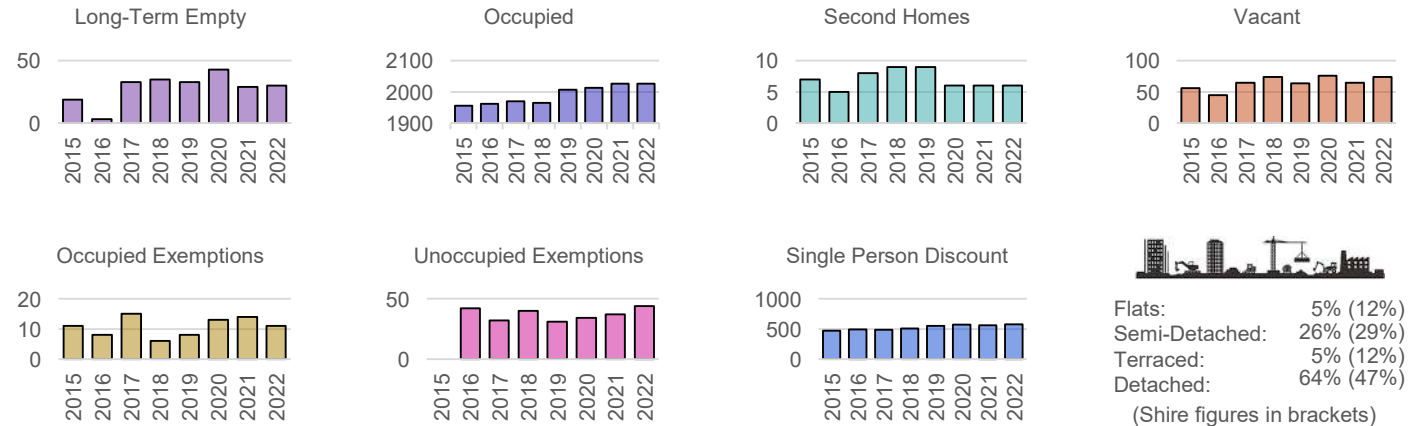
Proportion of Dwellings per Council Tax Band, 2022



Median Residential House Prices (Sales), 2006-22



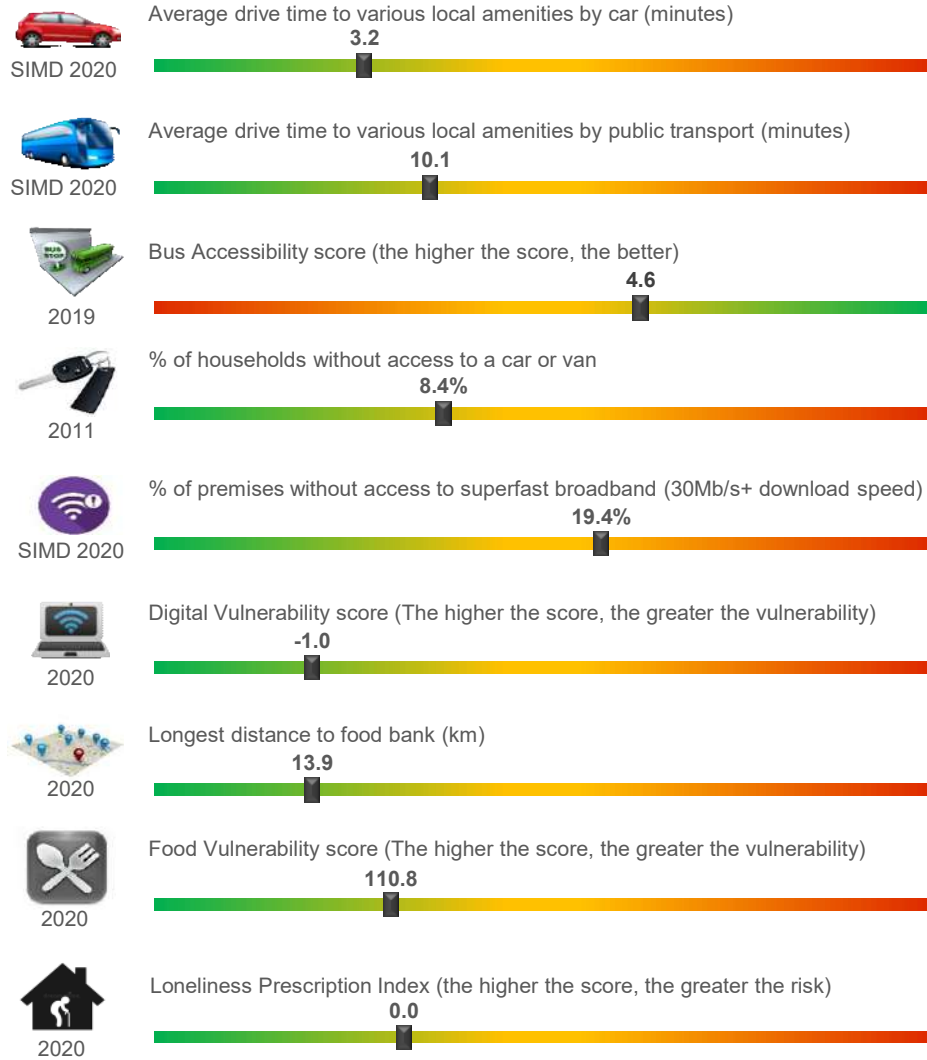
Housing Types, 2015-22 (Data on Flats, etc., relate to 2017 - the latest year for which data are available)



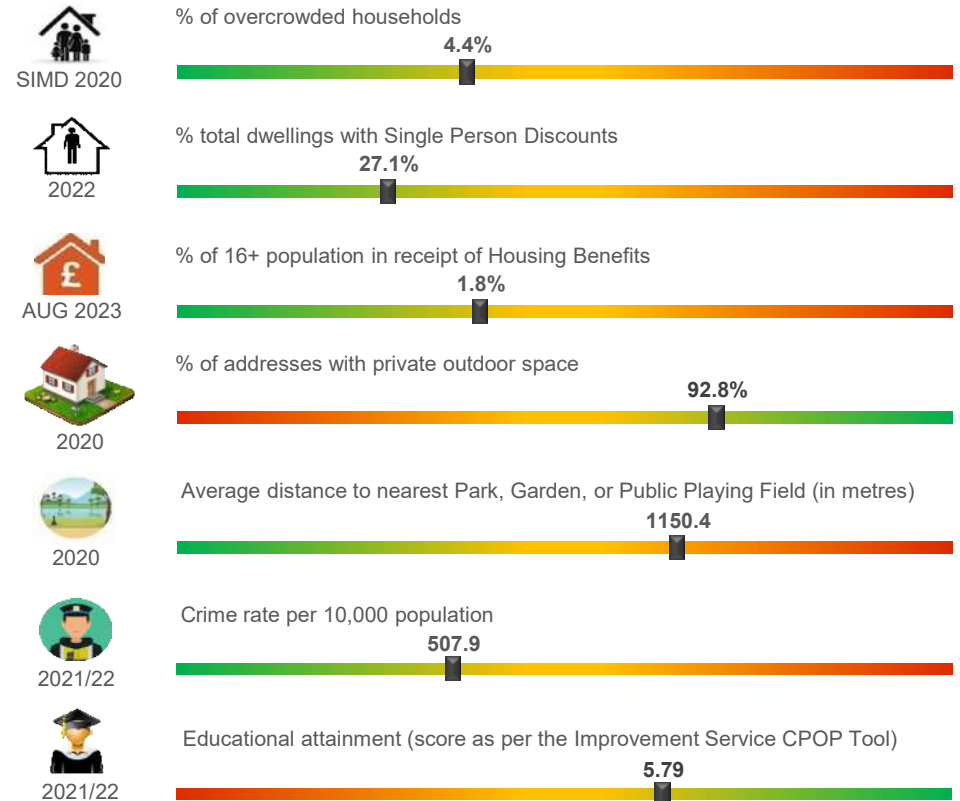
Other Indicators

Barrhill Other Socio-Economic Data

Geographic Access / Digital Connectivity / Food Vulnerability / Loneliness Proxy



Housing / Environment / Crime Rate / Educational Attainment



Summary

According to the miscellaneous socio-economic indicators on this page, the IZ appears to be well served in terms of households with access to a car or a van, private outdoor garden space, lower % of 16+ population in receipt of Housing Benefits and a lower Digital Vulnerability Score. Due to the more rural aspect of the IZ, the average distance to the nearest park, garden or public playing field is relatively high but there is a large % of the population who live in houses that are likely to have a garden, Geographic access in terms of drive times to local amenities is towards the lower end of the scale as is bus accessibility. The Educational Attainment is relatively high and Digital Vulnerability is low however approximately 19.4% of premises cannot access superfast broadband.