

Aberchirder and Whitehills

Intermediate Zone Statistical Summary

2023

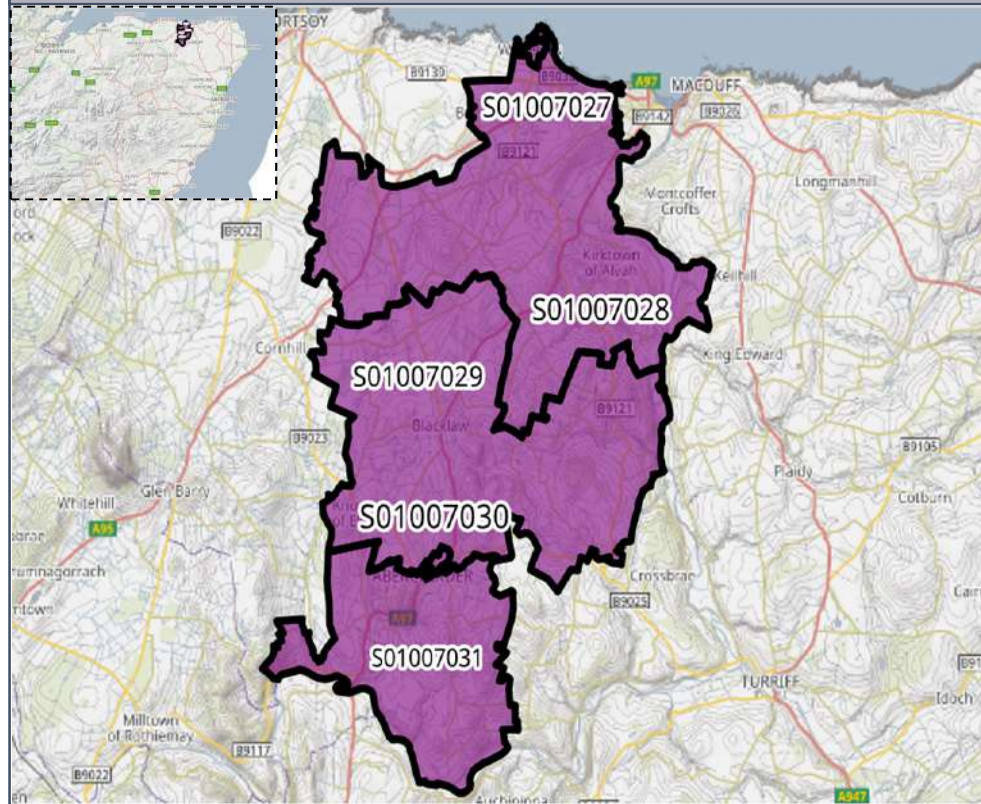


Daniel Stanford

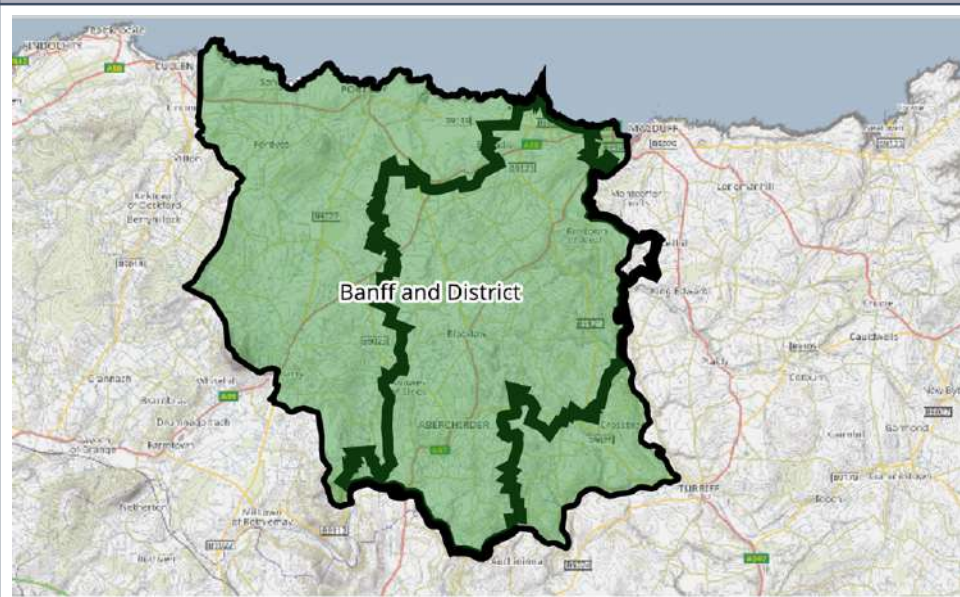


Aberchirder and Whitehills

Data Zones Within the Intermediate Zone



Relevant Multi-Member Wards



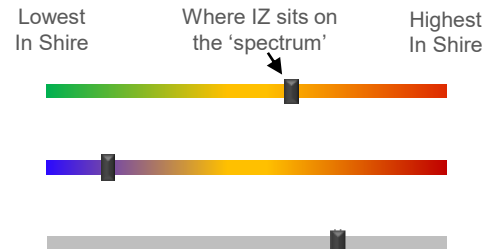
Notes on the Maps

The Map on the left shows the location and geographic area of the Aberchirder and Whitehills Intermediate Zone which contains five Data Zones. The Intermediate Zone lies mostly within /ward 1, Banff and District.

Spectrum Charts Explained

The following statistical pages frequently utilise spectrum charts as a visual aid to accompany an indicator. They are used to place the relevant Intermediate Zone (IZ) in the context of all other IZs in Aberdeenshire with regards to that indicator.

The charts to the right are examples of the spectrum charts used in this report. The black line represents where the IZ sits in the context of the highest and lowest figures in Aberdeenshire. If the black line is situated towards the left-hand side, the IZ recorded one of the lowest figures in Aberdeenshire. Conversely, if the black line is towards the right-hand side, it recorded one of the highest figures in Aberdeenshire.



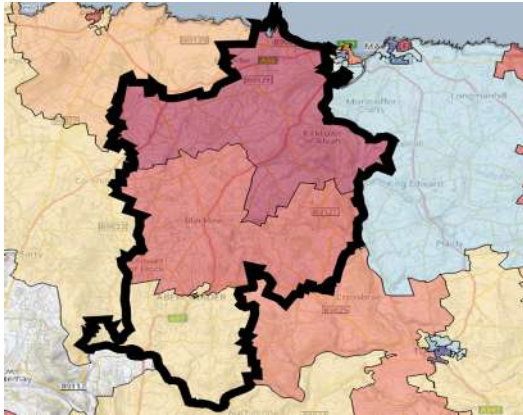
The green/red spectrum charts are the most common type. If the black line is situated towards the red end of the spectrum, it means the figure is objectively worse than most other IZs in Aberdeenshire and *vice versa*.

The blue/red spectrum charts are used in the demographic section to denote high population growth (red) and population decline (blue).

The grey spectrum charts are simply used to denote high and low in the context of Aberdeenshire, where the high / low figure is neither good nor bad. An example would be the proportion of dwellings that fall within Council Tax Bands F-G.

Aberchirder and Whitehills Demographic Data

Map of Aberchirder and Whitehills: Population Change (2014-2021)



Low Growth / Depopulation (Blue) High Growth (Red)

The population of the Aberchirder and Whitehills IZ increased by 5.2% between 2014 and 2021. This is mainly down to the population spikes in DZ S01007028 where there was an increase of 305 (39.4%) and DZ S01007029 where there was an increase of 39 (7.3%).

Compared to 2014 Aberchirder and Whitehills has seen significant increases in the 10-19 & 70- 79 age groups with a 20.6% and 36.4% increase, respectively.

At 57.3%, the proportion of Working Age people in the IZ is one of the lowest in the region when looking at the spectrum in an Aberdeenshire context.

At 17.9%, Aberchirder and Whitehills is roughly in line with the average when looking at the spectrum in an Aberdeenshire context.

At 24.8% the number of older residents in the IZ is higher than most other areas of Aberdeenshire possibly with the spikes in population change among the 70+ age range.

In the three DZ's that have seen population decreases this is mostly down to a drop in children and working-class age groups.

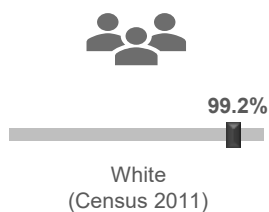
Population Change per Data Zone, 2014 & 2021

Data Zone	2014	2021	% Difference
S01007027	1064	960	-9.8%
S01007028	775	1080	39.4%
S01007029	535	574	7.3%
S01007030	762	738	-3.1%
S01007031	636	615	-3.3%
Total	3772	3967	5.2%

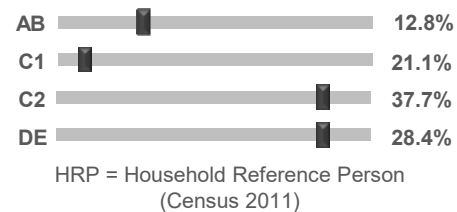
Country of Birth



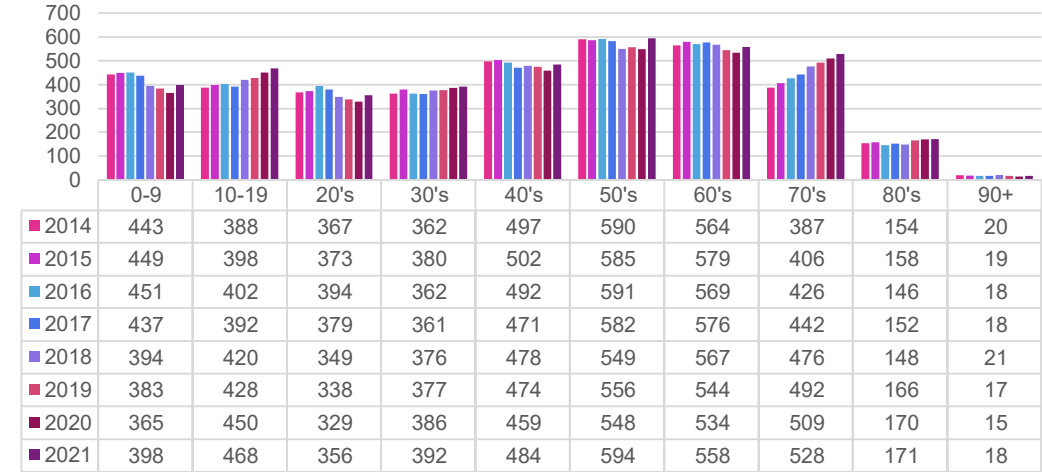
Ethnicity



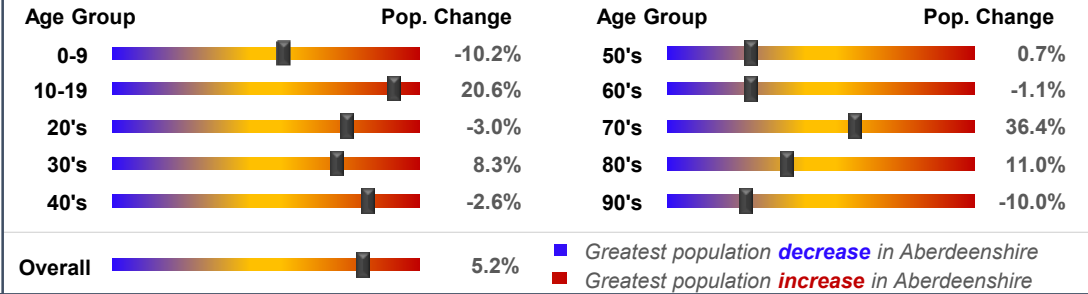
Approximated Social Grade of HRP



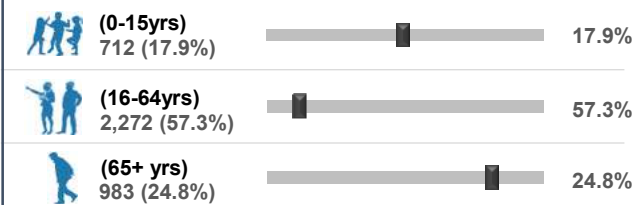
Population per Age Group, Aberchirder and Whitehills, 2014-2021



Rate of Population Change per Age Group, 2021 Compared to 2014



Population per Broad Age Group, 2021



In 2021 3,967 people lived in Aberchirder and Whitehills -- 712 (17.9%) were under 15 years of age, 2,272 (57.3%) were aged 16-64, and 983 (24.8%) were over 65.

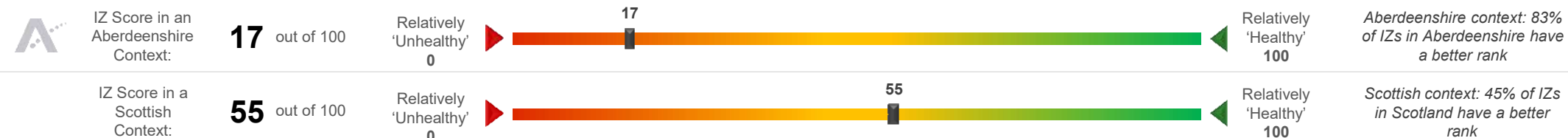
The black markers show where these percentages sit in the context of Aberdeenshire: left = low; right = high.

Aberchirder and Whitehills Health Data (1 of 2)

SIMD 2020 Health Domain Rank		Universal Credit (UC) Limited Work Capability Households	Personal Independence Payments				
		<p>No. of Households in receipt of Universal Credit</p> <p>% of Households where at least 1 occupant has limited work capability (May-2023) - Aberdeenshire Context</p> <p>4.7%</p>	<p>No. of Cases with Entitlement</p> <p>% of Working Age Population (16-64) Receiving PIPs (Jul-2023) - Aberdeenshire Context</p> <p>4.1%</p>				
<p>Day-to-Day Activities</p> <p>Proportion of people whose day-to-day activities are limited a little or a lot - Aberdeenshire Context (Census 2011)</p> <p>20.4%</p>	<p>Health Rating</p> <p>Proportion of people who rated their health as either 'good' or 'very good' - Aberdeenshire Context (Census 2011)</p> <p>84.1%</p>	<p>According to monthly health-related benefits data, the number of households on Universal Credit has decreased since the summer 2022 peak, generally contradicting the Aberdeenshire trend, which has been on a steady upwards trajectory since late 2021. The number of households with Limited Work Capability or LWC (due to physical or mental health issues) has increased in line with the Aberdeenshire trend, now affecting 79 households, which is higher than the number seen over the summer peak. The IZ figure of 4.7% of households with at least 1 occupant assessed as having LWC is towards the higher end of the Shire spectrum.</p> <p>A lower proportion of the Working Age Population (4.1%) receive Personal Independence Payments (PIPs). This helps with some of the extra costs caused by long-term disability, ill-health or terminal ill-health. The IZ trend has decreased since the 2022 peak.</p>					
<p>SIMD 2020 Health Domain Indicators per each Data Zone in the Aberchirder and Whitehills Intermediate Zone (compared to Aberdeenshire average)</p>							
<p>SIMD Health Domain Indicator (Data Zones colour-coordinated with map) >></p>		<p>S01007027</p>	<p>S01007028</p>	<p>S01007029</p>	<p>S01007030</p>	<p>S01007031</p>	<p>Shire</p>
<p>Health Domain Rank (see map for colour-coded rankings) (the higher, the better)</p>		3724	5418	5792	4641	3412	5,254
<p>Comparative Illness Factor (Scotland = 100) (the lower, the better)</p>		95	70	60	70	115	58
<p>Emergency stays in hospital (Scotland = 100) (the lower, the better)</p>		84.4	53.9	58.5	58.3	83.3	71.5
<p>Hospital stays related to alcohol misuse (Scotland = 100) (the lower, the better)</p>		87.8	24.6	25.2	53.0	62.7	45.4
<p>Hospital stays related to drug misuse (Scotland = 100) (the lower, the better)</p>		0.0	64.3	0.0	88.6	0.0	30
<p>Proportion of live singleton births of lowbirth weight (the lower, the better)</p>		9.1%	0.0%	9.1%	3.4%	0.0%	4.0%
<p>Proportion of population being prescribed drugs for anxiety, depression or psychosis</p>		17.9%	17.0%	11.8%	18.7%	19.0%	15.6%
<p>Standardised Mortality Ratio (Scotland = 100) (the lower, the better)</p>		89	38	88	95	113	85

Aberchirder and Whitehills Health Data (2 of 2)

Aberchirder and Whitehills's position on the 'Health Spectrum' – Aberdeenshire and Scottish Context (the higher the score, the better)



Selection of ScotPHO indicators, Aberchirder and Whitehills IZ compared to Aberdeenshire & Scotland (latest data)

Indicator	Latest Available Figures				IZ Trend	Indicator Measurement
	IZ	IZ's latest figure compared to:				
		Aberdeenshire	Scotland			
Alcohol-related hospital stays	411.0	54.6%		-32.7%	Down	Rate per 100,000 pop.
All-cause mortality among the 15-44 year olds	150.0	59.0%		28.1%	Up	Rate per 100,000 pop.
Babies exclusively breastfed at 6-8 weeks	43.0	2.5%		11.2%	Up	% of babies with a valid feeding status
Bowel screening uptake	73.2	0.1%		7.6%	Up	% of eligible people (aged 50-74)
Child dental health in primary 1	77.1	-1.6%		4.0%	Down	% of P1 pupils
Child dental health in primary 7	65.8	-13.9%		-9.2%	Up	% of P7 pupils
Child healthy weight in primary 1	79.3	2.0%		9.6%	Up	% of P1 pupils
Deaths all ages	1438.2	35.8%		21.8%	Up	Rate per 100,000 pop.
Developmental concerns at 27-30 months	2.1	-0.8%		-12.5%	Down	% of children reviewed
Early deaths from cancer (<75)	137.8	4.6%		-7.9%	Down	Rate per 100,000 pop.
Early deaths from coronary heart disease (<75)	51.2	35.4%		-2.7%	Down	Rate per 100,000 pop.
Female life expectancy	83.1	1.5%		2.9%	Down	Life expectancy at birth in years
Healthy birth weight	78.1	-5.0%		-6.1%	Down	% of all singleton births
Immunisation uptake at 24 months - 6 in 1	99.1	1.3%		2.1%	Down	% of children in relevant age group
Immunisation uptake at 24 months - MMR	98.3	3.5%		3.9%	Down	% of children in relevant age group
Male life expectancy	77.3	-0.5%		1.0%	Down	Life expectancy at birth in years
Maternal obesity	26.9	2.5%		0.8%	Up	% of women at antenatal booking
Patients (65+) with multiple A&E hospitalisations	7822.5	24.3%		14.6%	Up	Rate per 100,000 pop.
Patients hospitalised with asthma	26.2	-18.1%		-61.8%	Down	Rate per 100,000 pop.
Patients hospitalised with COPD	106.0	-9.4%		-48.9%	Down	Rate per 100,000 pop.
Patients hospitalised with coronary heart disease	394.7	34.2%		15.5%	Up	Rate per 100,000 pop.
Patients with emergency hospitalisations	5874.4	11.2%		-18.8%	Up	Rate per 100,000 pop.
Premature births	13.1	3.8%		4.9%	Up	% of all live births
Uptake of the HPV vaccine in S3 girls	80.6	-8.8%		-4.2%	Down	% of S3 girls

Based on the 24 health-related indicators in the table, this IZ is situated at the more vulnerable end of the spectrum (17) in an Aberdeenshire context. The IZ fares slightly better when all IZs in Scotland are taken into consideration as it is in the top half nationally (55).

The area compares favourably to most other areas in Scotland in terms of Bowel screening uptake – the area is in the top 10% in Scotland in terms of this health-related outcome.

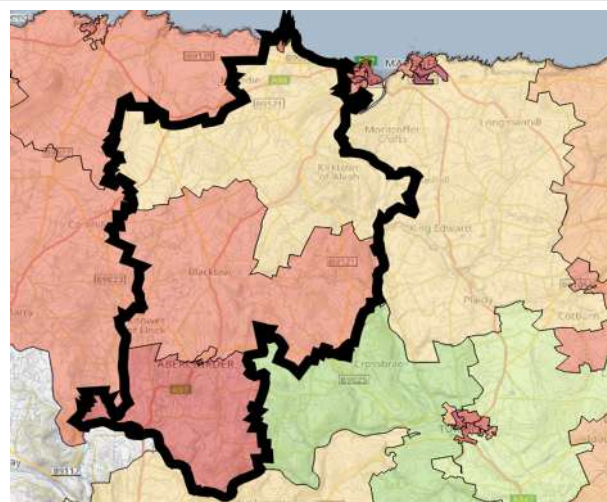
Issues that may require further investigation include:

- Premature Births
- Healthy Birth Weight
- Deaths all ages

With regards to each of the indicators listed above the IZ compares less favourably to other areas in Aberdeenshire and, in some instances, Scotland (and/or the trend is worsening).

Aberchirder and Whitehills Economic Data (1 of 3)

Rank of Household Income per Data Zone (2023)



In terms of household income, this IZ is among the lower end of the scale in Aberdeenshire. The median household income in 2023 equated to £34,246 which is £7,510 lower than the Shire average (£41,756).

Median household income ranges from £29,547 in DZ S01007031 to £41,459 in DZ S01007028.

Approximately 7.2% of households in this IZ earn less than £10,000 per year, which is higher-than-average (5.3%). This equates to roughly 130 households.

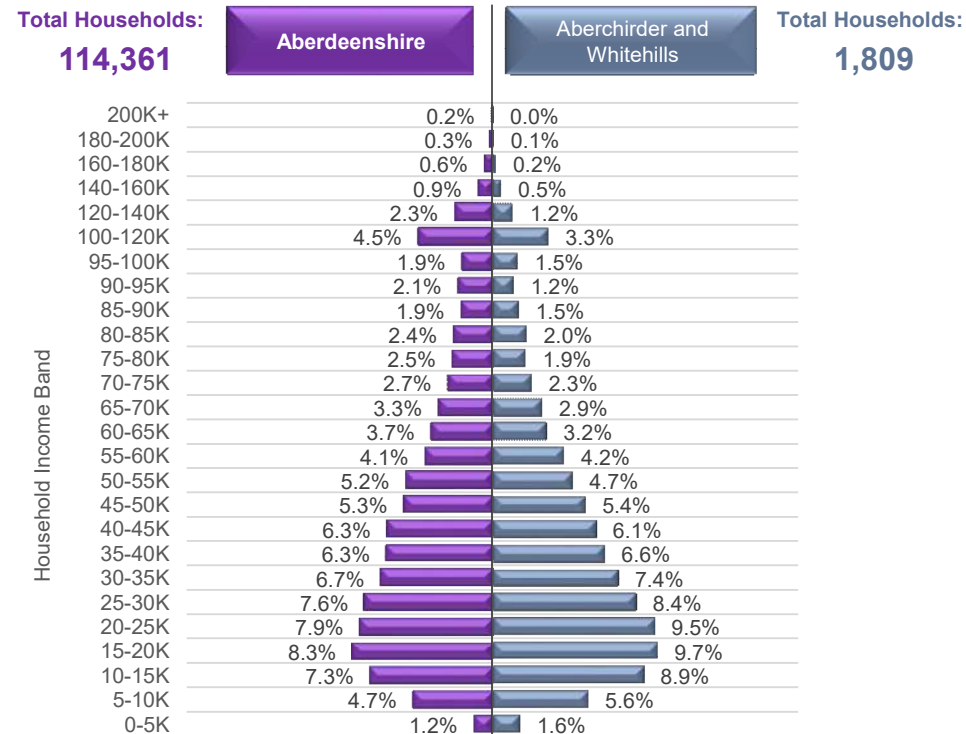
In addition, Approximately 5.3% of households in this IZ earn more than £100,000 per year, which is lower than average (10.1%). This equates to roughly 96 households.



Household Income per Data Zone (2023)

Data Zone	Households	Average Income	Median Income	Lower Quartile Income
S01007027	456	£ 39,014	£ 31,580	£ 18,158
S01007028	491	£ 48,741	£ 41,459	£ 24,280
S01007029	240	£ 40,703	£ 33,419	£ 19,516
S01007030	325	£ 40,340	£ 32,843	£ 19,009
S01007031	297	£ 37,480	£ 29,547	£ 16,455

Household Income per Band, Aberchirder and Whitehills & Aberdeenshire (2023)



© CACI Limited 1996 - 2022 This report shall be used solely for academic, personal and/or non-commercial purposes. The applicable copyright notices can be found at <https://www.caci.co.uk/copyrightnotices.pdf>

Median Household Income (2023)



£34,246

Aberdeenshire: £41,756

£34,246



% of Households Earning Less Than £10k (2023)



<£10K

7.2%

Aberdeenshire: 5.3%

7.2%



% of Households Earning More Than £100k (2023)



>£100K

5.3%

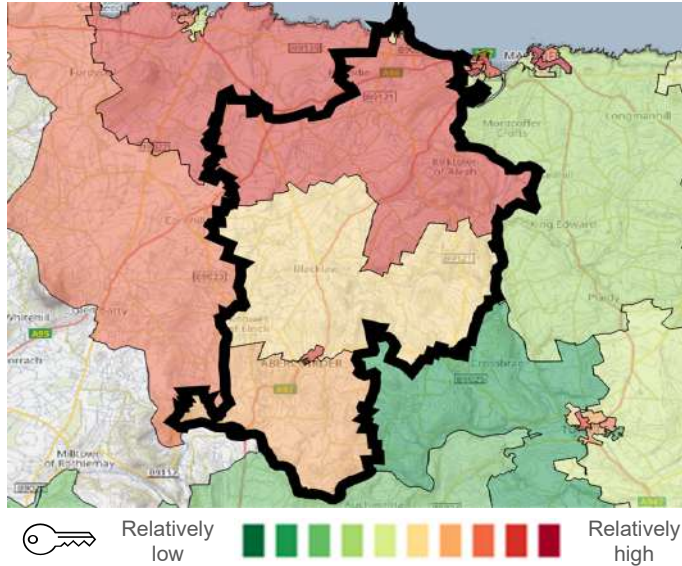
Aberdeenshire: 10.1%

5.3%

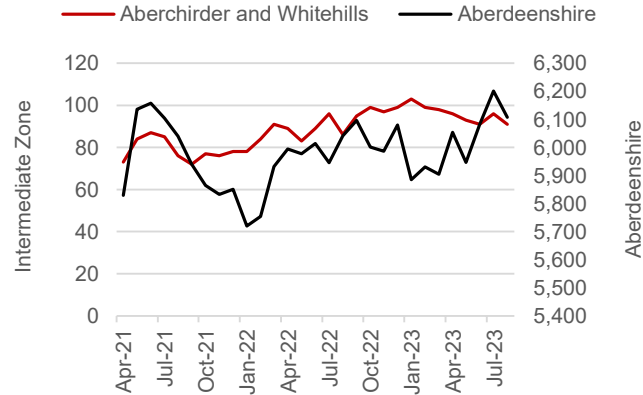


Aberchirder and Whitehills Economic Data (2 of 3)

Latest Unemployment Rate - Ranking per Data Zone



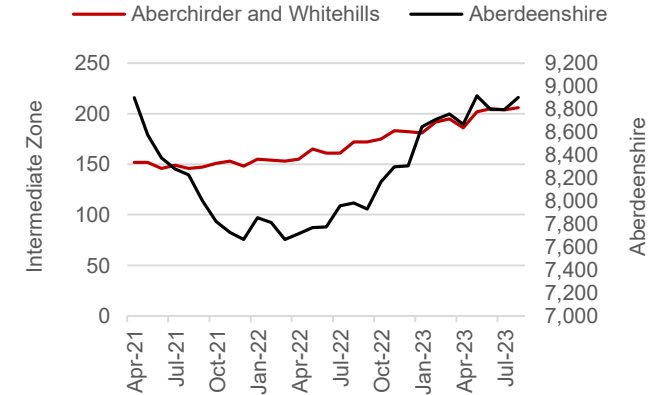
People on Universal Credit - In Employment



% of Working Age Population on Universal Credit and **In Employment** - Aberdeenshire Context (Aug 2023)



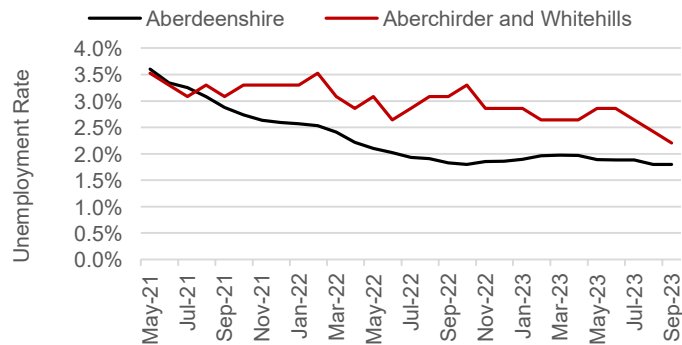
People on Universal Credit - Not In Employment



% of Working Age Population on Universal Credit and **Not In Employment** - Aberdeenshire Context (Aug 2023)



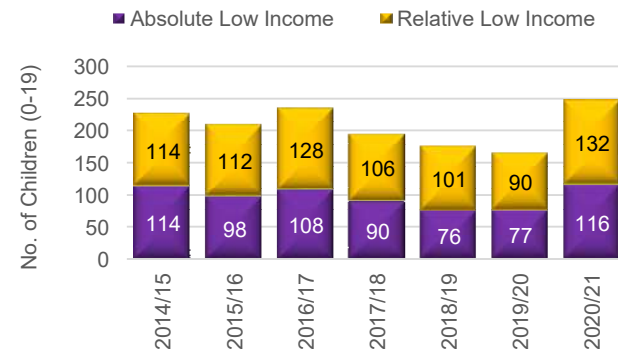
Alternative Claimant Count - Effective 'Unemployment Rate'



Aberchirder and Whitehills's Alternative Claimant Count (Unemployment Rate) - Aberdeenshire Context (Sep 2023)



Children in Low Income Families



% of Children (aged 0-19) in Low Income Families (2020/21)



Summary

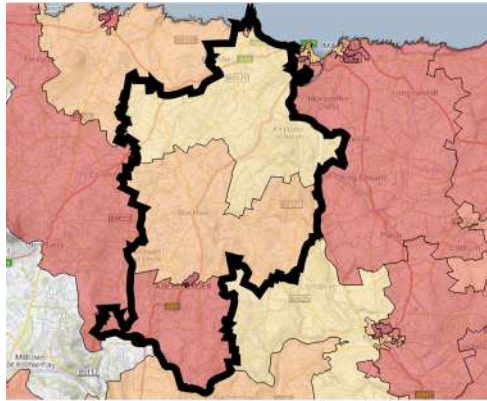
The number of people claiming Universal Credit (UC) - who are also in employment - has remained relatively steady over the last few months, contrary to the Shire-wide trend, which has increased. Latest figures show 4.0% of people aged 16-64 (who also have jobs) are claiming UC. This is towards the higher end of the spectrum in a Shire context. A similar picture emerges in relation to people on UC and not in employment.

Like Aberdeenshire, the unemployment rate in the IZ has fallen substantially since the September 2020 peak of 3.8%. Latest data suggests approximately 2.2% of the Working Age population is currently out-of-work, which is slightly higher than the Aberdeenshire rate (1.8%).

Children living in low-income families are relatively uncommon. However, recent increases suggest the issue may be coming more to the fore over recent years, particularly since 2020/21.

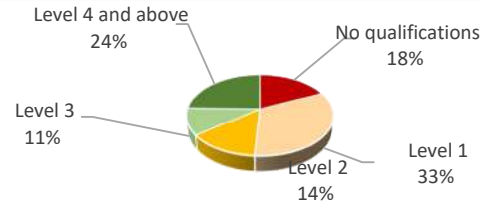
Aberchirder and Whitehills Economic Data (3 of 3)

People With No Qualifications, Census 2011



Relatively low Relatively high

% of Employees per Qualification Type



Summary

The employment numbers per broad industrial group relate to the kind of jobs within the area, which may be filled by those living outwith the IZ.

Major industries in terms of jobs in the area include the Accommodation & Food sector, the Manufacturing sector and the Construction sector.

There has been a large growth in Accommodation and Food and Transport & Storage sector. Jobs in this latter industry have increased by 700% since 2020.

The growth in these type of jobs, has led to a small 4% increase in jobs across the IZ between 2020 and 2022, suggesting a good degree of resilience post-Covid.

The area however appears to have struggled to attract to the region. With a drop in Enterprises across the board apart from the £100 - £199k band which has seen a small increase.

Approximate Employment Count per Broad Industrial Group, Aberchirder and Whitehills, 2020-22

Broad Industrial Group	2020	2021	2022	2020-22 % Diff.
Agriculture, forestry & fishing	45	45	40	-11%
Mining, quarrying & utilities	20	10	15	-25%
Manufacturing	100	75	75	-25%
Construction	75	100	75	0%
Motor trades	10	15	15	50%
Wholesale	20	5	20	0%
Retail	75	75	50	-33%
Transport & storage (inc postal)	5	40	40	700%
Accommodation & food services	75	125	125	67%
Information & communication	0	10	0	0%
Financial & insurance	0	0	0	0%
Property	0	0	0	0%
Professional, scientific & technical	30	25	35	17%
Business administration & support services	30	35	35	17%
Public administration & defence	0	10	10	0%
Education	50	50	50	0%
Health	45	35	30	-33%
Arts, entertainment, recreation & other services	20	20	10	-50%
Total	600	675	625	4%

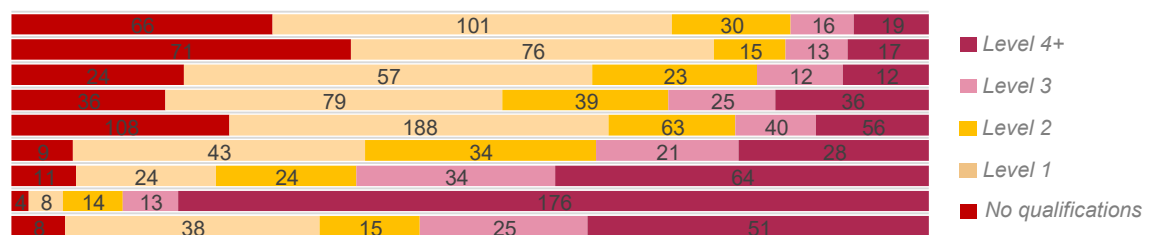
Approximate Number of Enterprises per Turnover Band (£), Aberchirder and Whitehills, 2021-23

Turnover	2021	2022	2023	2021-23 % Diff.
£1m+	10	5	5	-50%
£500-999k	5	0	5	0%
£200-499k	25	20	15	-40%
£100-199k	85	85	90	6%
£50-99k	35	35	25	-29%
£0-49k	55	50	50	-9%

Employees per Occupation Type, Census 2011

Elementary occupations	232
Process, plant and machine operatives	192
Sales and customer service occupations	128
Caring, leisure and other service occupations	215
Skilled trades occupations	455
Administrative and secretarial occupations	135
Associate professional and technical...	157
Professional occupations	215
Managers, directors and senior officials	137

Employees per Qualification & Occupation Type, Census 2011



Housing Indicators

Aberchirder and Whitehills Housing Data



Relatively sparse / rural

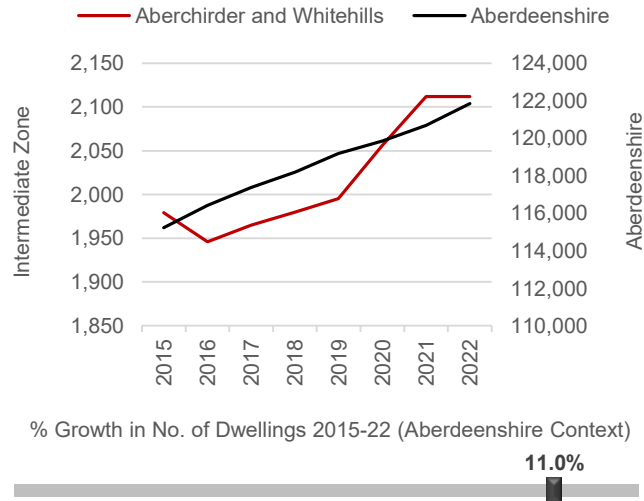
Dwellings per Hectare (2022)

0.17



Relatively dense / urban

Number of Dwellings, 2015-22



Summary

At 0.17 dwellings per hectare, this IZ is in the lower range of the spectrum between the rural and urban extremes.

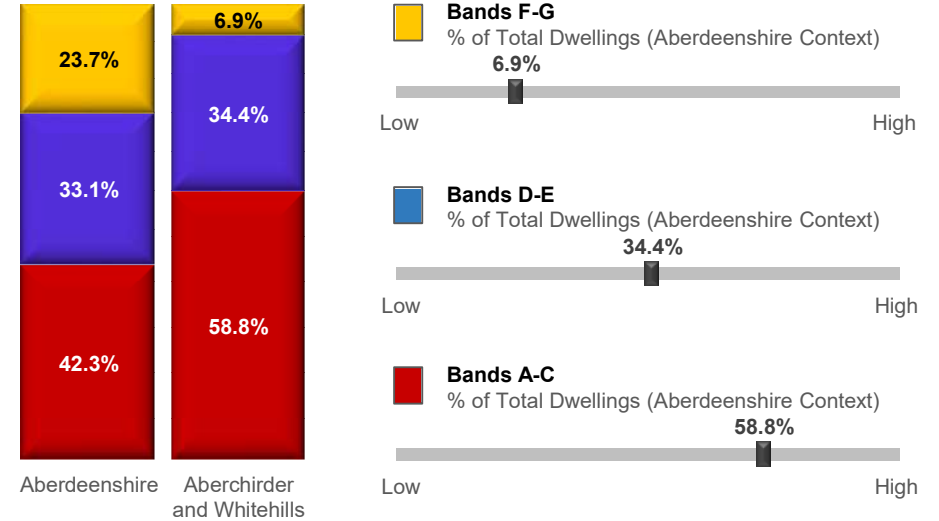
The number of dwellings in the IZ has increased by 11.0% since 2015, which is one of the highest on the spectrum in an Aberdeenshire context.

House building in the area has been on steady increase since 2015 – 2021 and has since plateaued.

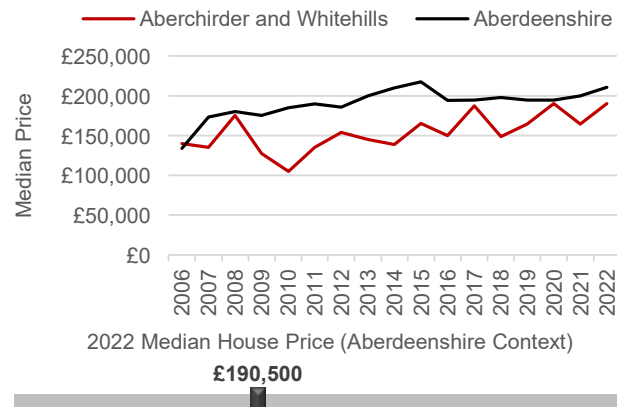
A relatively large proportion of the dwellings in this IZ (58.8%) fall within Council Tax Bands A-C. This puts the IZ towards the higher end of the spectrum. Relatively few properties fall within Bands F-G (6.9%).

The median house price is £190,500 which is significantly lower £20,495 lower than the Aberdeenshire average (£210,995).

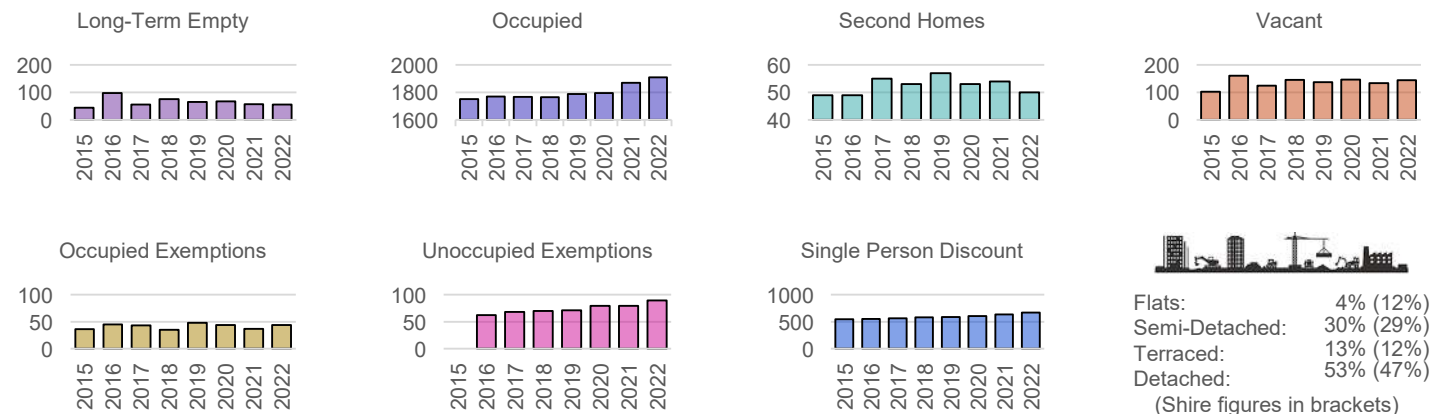
Proportion of Dwellings per Council Tax Band, 2022



Median Residential House Prices (Sales), 2006-22



Housing Types, 2015-22 (Data on Flats, etc., relate to 2017 - the latest year for which data are available)

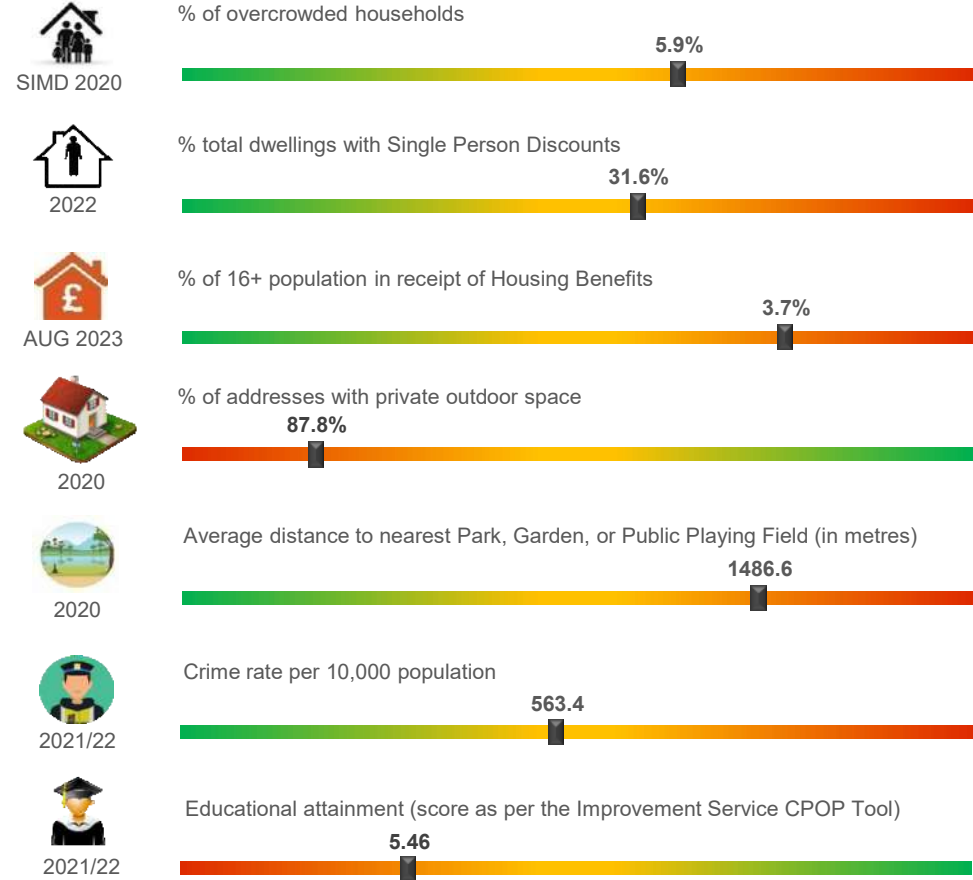


Aberchirder and Whitehills Other Socio-Economic Data

Geographic Access / Digital Connectivity / Food Vulnerability / Loneliness Proxy



Housing / Environment / Crime Rate / Educational Attainment



Summary

According to the miscellaneous socio-economic indicators on this page, average drive times (via car and public transport) to various local amenities are high, bus accessibility in the area is also poor and only 86% of households have access to a car or van.

The % of dwellings with single person discounts and the % of 16+ population in receipt of Housing Benefits along with overcrowding is towards the higher end of the spectrum and the crime rate is low. Both Digital Vulnerability and the % of premises without access to superfast broadband are low.