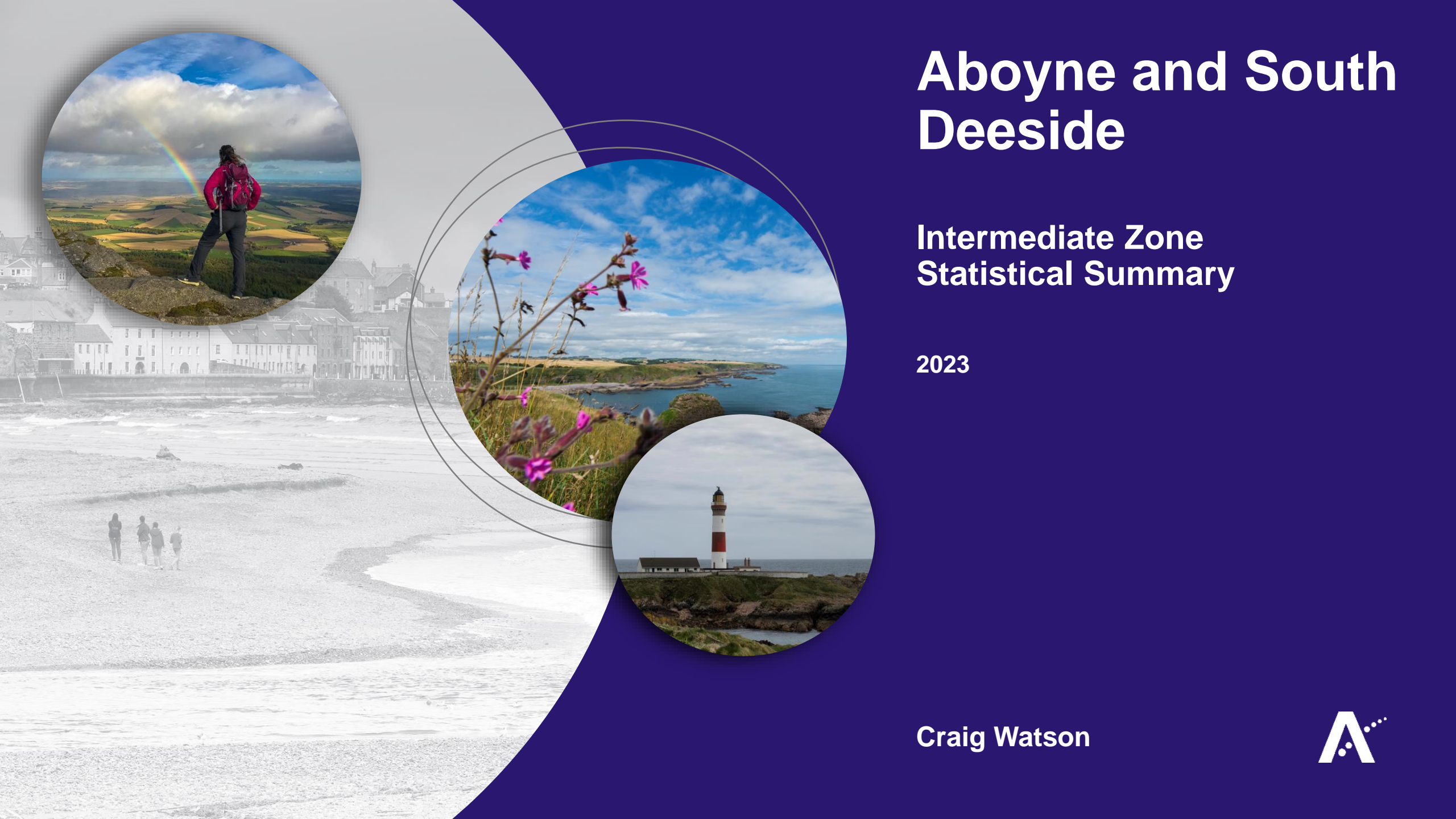


Aboyne and South Deeside

Intermediate Zone Statistical Summary

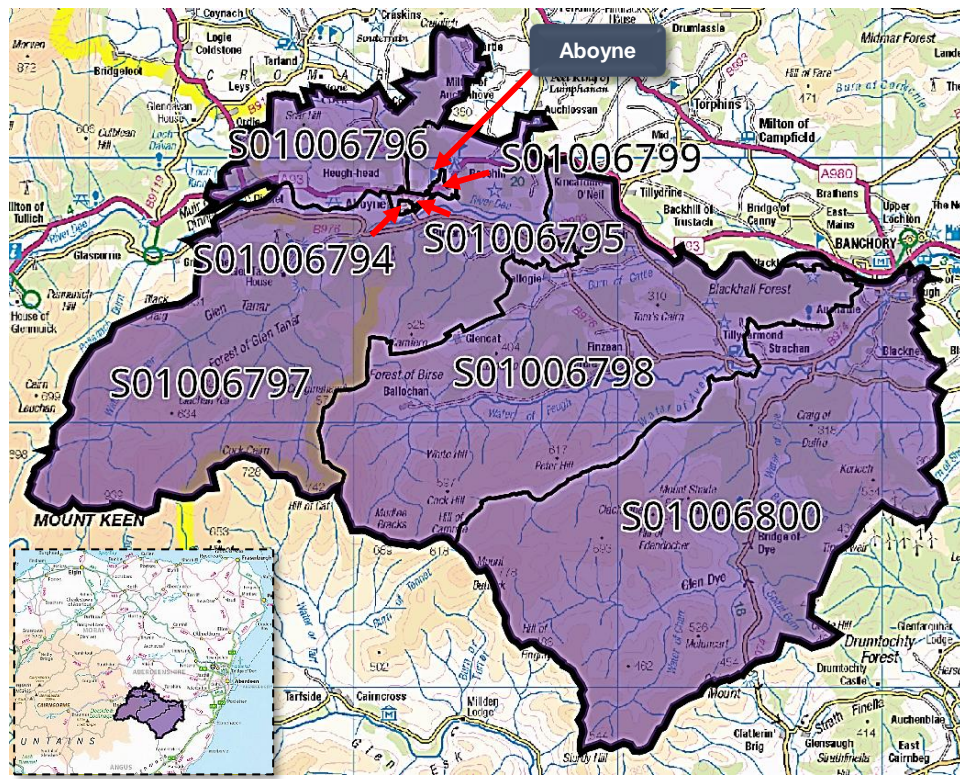
2023

Craig Watson

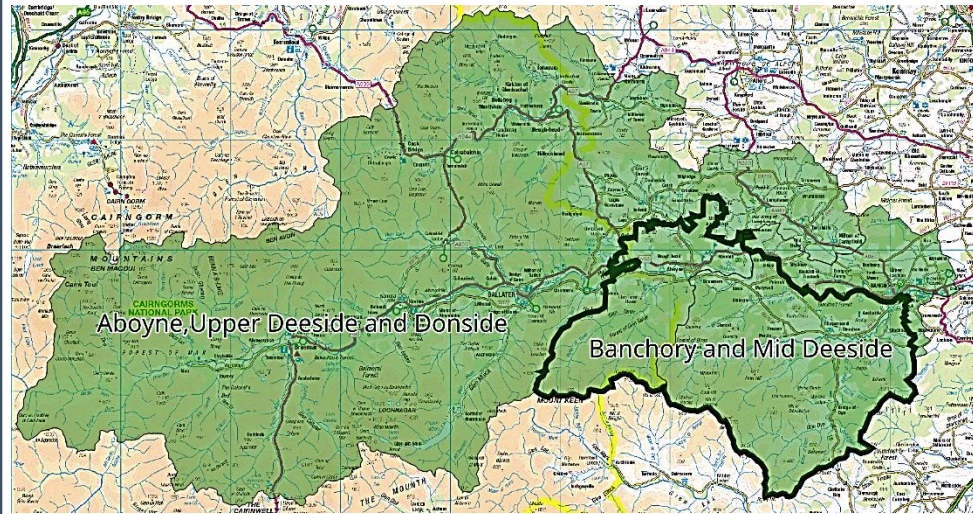


Aboyne and South Deeside

Data Zones Within the Intermediate Zone



Relevant Multi-Member Wards



Notes on the Maps

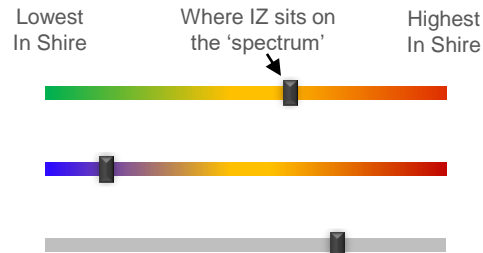
The map on the left shows the location and geographic area of the Aboyne and South Deeside Intermediate Zone. It contains 5 Data Zones. Aboyne comprises three Data Zones – S01006799, S01006794, and S01006795.

Two MMWs straddle the Intermediate Zone – Aboyne, Upper Deeside and Donside, and Banchory and Mid Deeside. These maps are shown for reference only.

Spectrum Charts Explained

The following statistical pages frequently utilise spectrum charts as a visual aid to accompany an indicator. They are used to place the relevant Intermediate Zone (IZ) in the context of all other IZs in Aberdeenshire with regards to that indicator.

The charts to the right are examples of the spectrum charts used in this report. The black line represents where the IZ sits in the context of the highest and lowest figures in Aberdeenshire. If the black line is situated towards the left-hand side, the IZ recorded one of the lowest figures in Aberdeenshire. Conversely, if the black line is towards the right-hand side, it recorded one of the highest figures in Aberdeenshire.



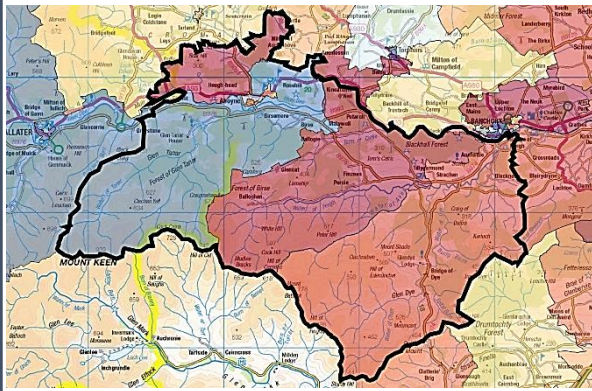
The green/red spectrum charts are the most common type. If the black line is situated towards the red end of the spectrum, it means the figure is objectively worse than most other IZs in Aberdeenshire and vice versa.

The blue/red spectrum charts are used in the demographic section to denote high population growth (red) and population decline (blue).

The grey spectrum charts are simply used to denote high and low in the context of Aberdeenshire, where the high / low figure is neither good nor bad. An example would be the proportion of dwellings that fall within Council Tax Bands F-G.

Aboyne and South Deeside Demographic Data

Map of Aboyne and South Deeside: Population Change (2014-2021)



Low Growth / Depopulation High Growth

Population Change per Data Zone, 2014 & 2021

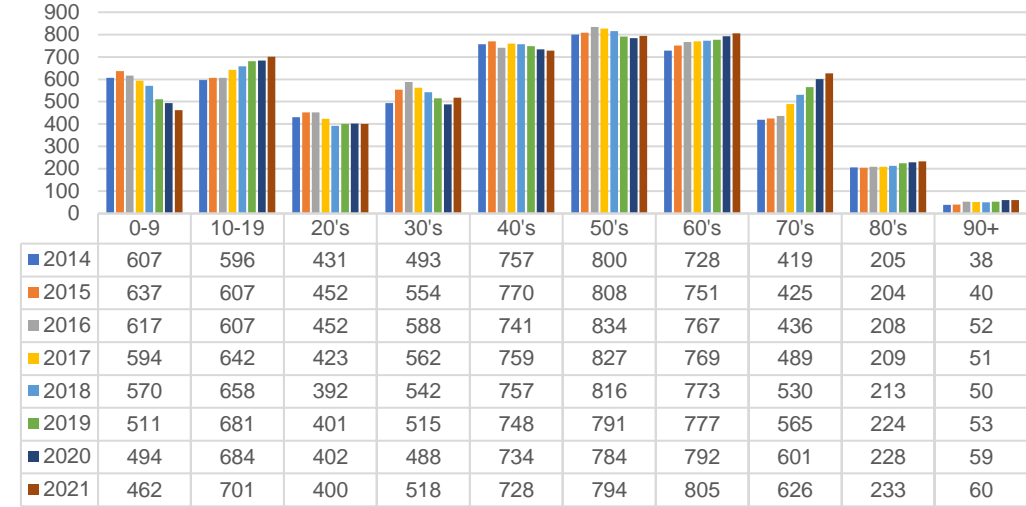
Data Zone	2014	2021	% Difference
S01006794	527	539	2.3%
S01006795	805	762	-5.3%
S01006796	742	961	29.5%
S01006797	647	587	-9.3%
S01006798	617	685	11.0%
S01006799	903	901	-0.2%
S01006800	833	892	7.1%
Total	5074	5327	5.0%

The population in this IZ increased by 5.0% between 2014 & 2021, which is one of the highest growth rates in Aberdeenshire over that period. This is largely thanks to 29.5% growth in DZ S01006796, which covers the area to the north of Aboyne (which includes the area north of Charlton Crescent). DZ S01006797, meanwhile, experienced a higher-than-average decline. This covers the rural area to the east, south, and southwest of Aboyne itself.

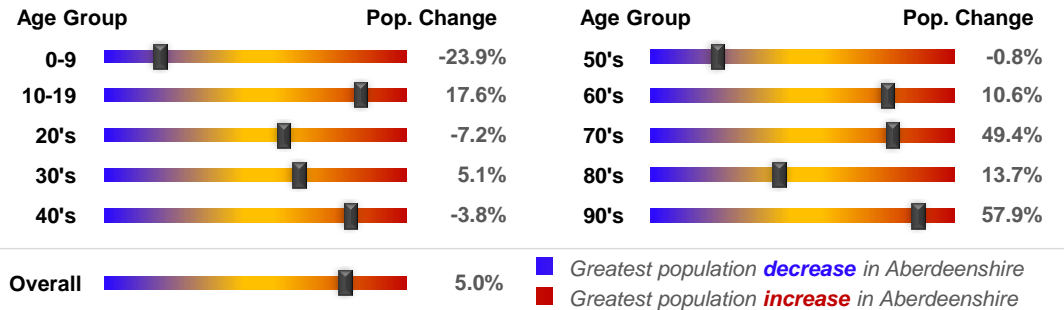
Relatively large increases were seen across a number of age groups, particularly among those in their 60's and 70's. And although the numbers are relatively low, this IZ has experienced one of the highest growth rates in Aberdeenshire in terms of people in their 90's. Taken together, this has meant that the IZ's 65+ population, which equates to 24.5% of the total population, is now relatively high in an Aberdeenshire context. Conversely, the Working Age population (58.1% of the total population) is relatively low.

As the graph (top-right) demonstrates, the number of children aged 0-9 has decreased by 23.9% since 2014 - one of the greatest reductions in Aberdeenshire. Conversely, those aged 10-19 have increase quite considerably. This suggests that younger children in the area are simply ageing, and that the child population is maturing relative to 2014.

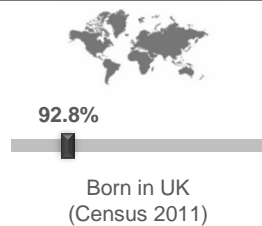
Population per Age Group, Aboyne and South Deeside, 2014-2021



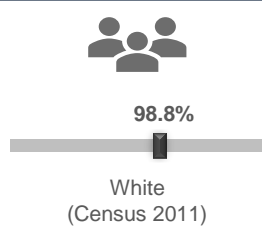
Rate of Population Change per Age Group, 2021 Compared to 2014



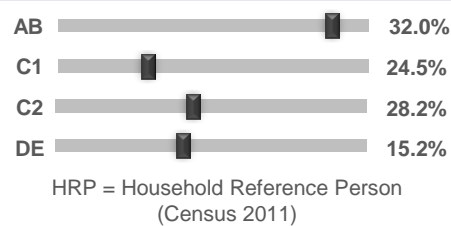
Country of Birth



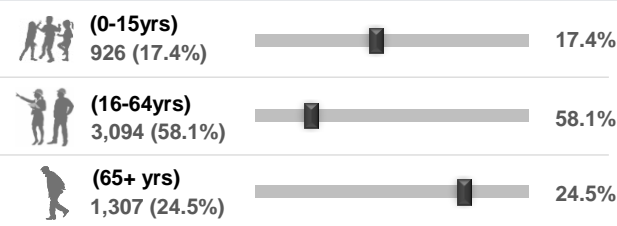
Ethnicity



Approximated Social Grade of HRP



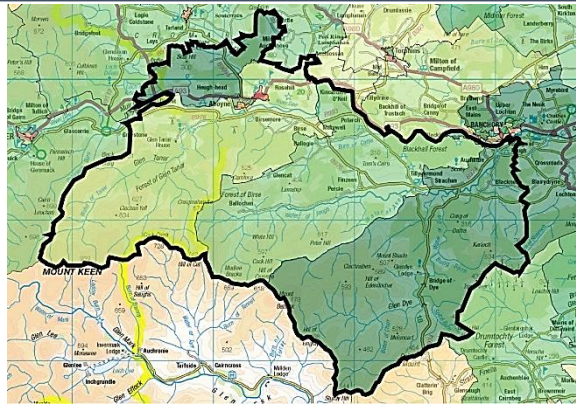
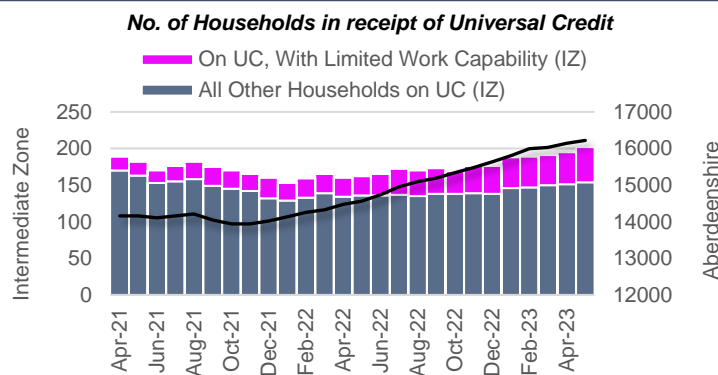

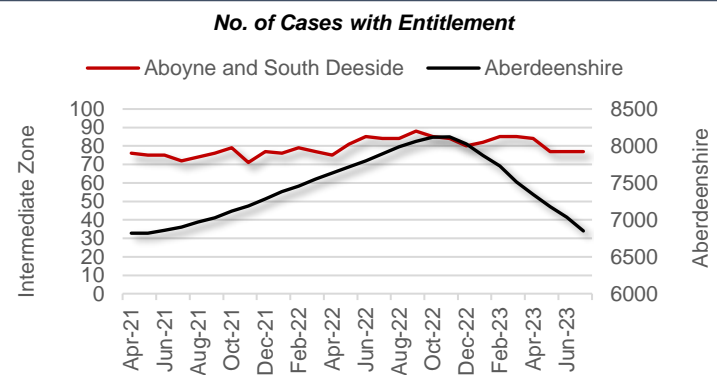



Population per Broad Age Group, 2021



In 2021 5,327 people lived in Aboyne and South Deeside -- 926 (17.4%) were under 15 years of age, 3,094 (58.1%) were aged 16-64, and 1,307 (24.5%) were over 65.

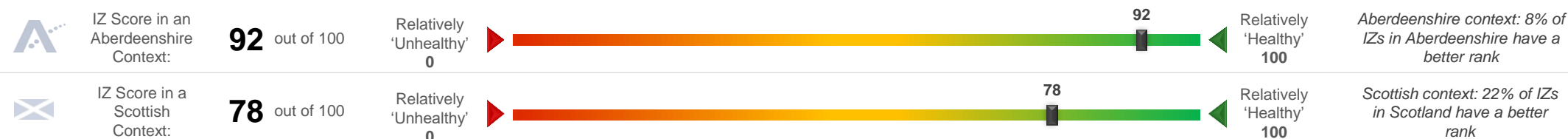
The black markers show where these percentages sit in the context of Aberdeenshire: left = low; right = high.

Aboyne and South Deeside Health Data (1 of 2)

SIMD 2020 Health Domain Rank		Universal Credit (UC) Limited Work Capability Households	Personal Independence Payments					
 <p>Relatively Good Ranking ■ ■ ■ ■ Relatively Poor Ranking</p>		<p>No. of Households in receipt of Universal Credit</p>  <p>Intermediate Zone</p> <p>Aberdeenshire</p> <p>% of Households where at least 1 occupant has limited work capability (May-2023) - Aberdeenshire Context</p> <p>2.1%</p> 	<p>No. of Cases with Entitlement</p>  <p>Intermediate Zone</p> <p>Aberdeenshire</p> <p>% of Working Age Population (16-64) Receiving PIPs (Jul-2023) - Aberdeenshire Context</p> <p>1.7%</p> 					
<p>Day-to-Day Activities</p> <p>Proportion of people whose day-to-day activities are limited a little or a lot - Aberdeenshire Context (Census 2011)</p> <p>14.8%</p> 	<p>Health Rating</p> <p>Proportion of people who rated their health as either 'good' or 'very good' - Aberdeenshire Context (Census 2011)</p> <p>89.2%</p> 	<p>According to monthly health-related benefits data, the number of households on Universal Credit has increased since the beginning of 2022. The number of households with Limited Work Capability or LWC (due to physical or mental health issues) has likewise increased since that time and remained relatively high throughout. However, the IZ figure of 2.1% of households with at least 1 occupant assessed as having LWC is low in the context of Aberdeenshire.</p> <p>A lower proportion of the Working Age Population (1.7%) receive Personal Independence Payments (PIPs). This helps with some of the extra costs caused by long-term disability, ill-health or terminal ill-health. The IZ trend has remained relatively stable. The Aberdeenshire trend is also on steady downwards trajectory since late 2022, which is not reflected within this IZ.</p> <p>According to SIMD 2020 data, DZ S01006800 has the best health ranking and S01006799 has the worst (northeast portion of Aboyne). However, in a Scottish context, most DZs are situated towards the healthier end of the spectrum, with two among the best in Scotland.</p>						
<p>SIMD 2020 Health Domain Indicators per each Data Zone in the Aboyne and South Deeside Intermediate Zone (compared to Aberdeenshire average)</p>								
<p>SIMD Health Domain Indicator (Data Zones colour-coordinated with map) >></p>								
	S01006794	S01006795	S01006796	S01006797	S01006798	S01006799	S01006800	Shire
Health Domain Rank (see map for colour-coded rankings) (the higher, the better)	4807	6323	6873	6099	6546	4300	6948	5,254
Comparative Illness Factor (Scotland = 100) (the lower, the better)	60	40	20	35	35	60	20	58
Emergency stays in hospital (Scotland = 100) (the lower, the better)	81.3	50.9	49.5	64.5	68.5	74.6	39.8	71.5
Hospital stays related to alcohol misuse (Scotland = 100) (the lower, the better)	19.0	24.2	4.8	15.6	0.0	54.5	8.0	45.4
Hospital stays related to drug misuse (Scotland = 100) (the lower, the better)	0.0	0.0	0.0	48.7	0.0	37.7	0.0	30
Proportion of live singleton births of lowbirth weight (the lower, the better)	0.0%	3.7%	2.7%	0.0%	12.5%	8.0%	0.0%	4.0%
Proportion of population being prescribed drugs for anxiety, depression or psychosis	21.8%	16.8%	15.3%	17.3%	12.9%	22.7%	10.8%	15.6%
Standardised Mortality Ratio (Scotland = 100) (the lower, the better)	83	80	65	91	65	97	50	85

Aboyne and South Deeside Health Data (2 of 2)

Aboyne and South Deeside's position on the 'Health Spectrum' – Aberdeenshire and Scottish Context (the higher the score, the better)



Selection of ScotPHO indicators, Aboyne and South Deeside IZ compared to Aberdeenshire & Scotland (latest data)

Indicator	Latest Available Figures				IZ Trend	Indicator Measurement
	IZ	IZ's latest figure compared to:				
		Aberdeenshire	Scotland			
Alcohol-related hospital stays	165.8	-37.6%		-72.9%	Up	Rate per 100,000 pop.
All-cause mortality among the 15-44 year olds	78.9	-16.4%		-32.7%	Up	Rate per 100,000 pop.
Babies exclusively breastfed at 6-8 weeks	61.5	21.0%		29.7%	Up	% of babies with a valid feeding status
Bowel screening uptake	76.2	3.2%		10.7%	Up	% of eligible people (aged 50-74)
Child dental health in primary 1	85.3	6.5%		12.2%	Down	% of P1 pupils
Child dental health in primary 7	82.6	2.9%		7.7%	Up	% of P7 pupils
Child healthy weight in primary 1	83.3	6.0%		13.6%	Up	% of P1 pupils
Deaths all ages	781.7	-26.2%		-33.8%	Down	Rate per 100,000 pop.
Developmental concerns at 27-30 months	0.0	-2.9%		-14.6%	Flat	% of children reviewed
Early deaths from cancer (<75)	77.5	-41.2%		-48.2%	Down	Rate per 100,000 pop.
Early deaths from coronary heart disease (<75)	23.0	-39.1%		-56.2%	Down	Rate per 100,000 pop.
Female life expectancy	85.7	4.7%		6.2%	Up	Life expectancy at birth in years
Healthy birth weight	81.6	-1.4%		-2.5%	Down	% of all singleton births
Immunisation uptake at 24 months - 6 in 1	100.0	2.2%		3.0%	Down	% of children in relevant age group
Immunisation uptake at 24 months - MMR	98.2	3.4%		3.8%	Up	% of children in relevant age group
Male life expectancy	80.6	3.7%		5.3%	Up	Life expectancy at birth in years
Maternal obesity	20.0	-4.5%		-6.1%	Up	% of women at antenatal booking
Patients (65+) with multiple A&E hospitalisations	5413.1	-14.0%		-20.7%	Down	Rate per 100,000 pop.
Patients hospitalised with asthma	56.5	76.8%		-17.5%	Down	Rate per 100,000 pop.
Patients hospitalised with COPD	80.8	-31.0%		-61.0%	Down	Rate per 100,000 pop.
Patients hospitalised with coronary heart disease	223.7	-23.9%		-34.5%	Down	Rate per 100,000 pop.
Patients with emergency hospitalisations	4659.3	-11.8%		-35.6%	Down	Rate per 100,000 pop.
Premature births	12.1	2.8%		3.9%	Up	% of all live births
Uptake of the HPV vaccine in S3 girls	86.4	-3.0%		1.6%	Down	% of S3 girls

Based on the 24 health-related indicators in the table, this IZ is situated towards the healthier end of the spectrum, both in an Aberdeenshire and a Scottish context. Indeed, the rankings have improved since the previous iteration.

The area compares favourably to most other areas in Scotland in terms of the hospitalisation rate for various illnesses - except, perhaps, for asthma, which is higher than the Aberdeenshire average (but still considerably lower than the Scottish equivalent rate). Emergency hospitalisation rates are among the lowest in the country.

Life expectancy is also higher-than-average in this IZ, both for males (80.6 years) and females (85.7 years). Male life expectancy increased slightly since the previous iteration, while the female rate remained the same.

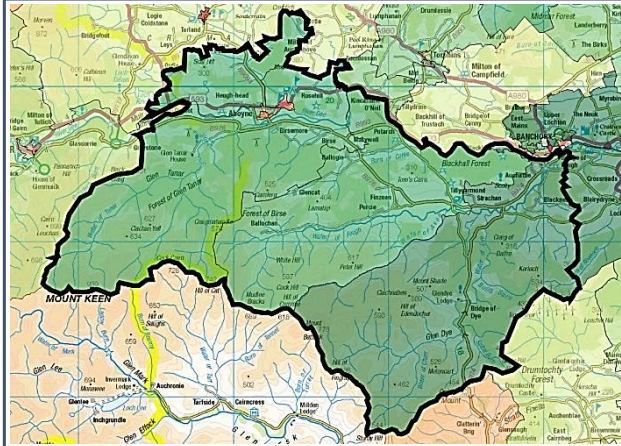
Issues that may require further investigation include:

- Healthy birthweight;
- Premature births;
- Uptake of the HPV vaccine in S3 girls.
- Patients hospitalised with asthma.

In each instance the IZ compares less favourably to other areas in Aberdeenshire and, in some instances, Scotland (and/or the trend is worsening).

Aboyne and South Deeside Economic Data (1 of 3)

Rank of Household Income per Data Zone (2023)



Relatively low ■ ■ ■ ■ ■ Relatively high

In terms of household income, this IZ is among the more affluent areas in Aberdeenshire. The median household income in 2023 equated to £49,456, which is £7,700 higher than the Shire average (£41,756).

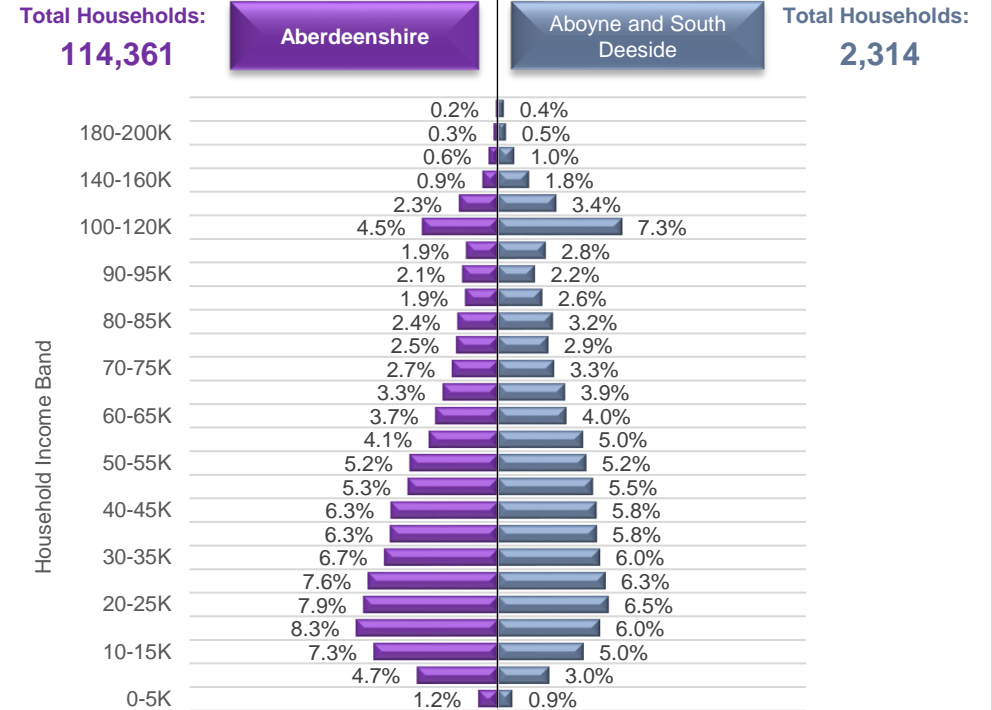
Median household income ranges from £34,925 in DZ S01006794 (south-western part of Aboyne) to £62,261 in DZ S01006800 (rural area south of Banchory, stretching south-west towards Angus). Approximately 3.9% of households in this IZ earn less than £10,000 per year. This equates to roughly 90 households. Areas with a particularly high concentration of such households are located in the Bonty Court area of Aboyne (likely due the sheltered housing complex there). Another such area surrounds Ladywood Drive in the western portion of Aboyne.

High income households are located throughout the IZ but are particularly concentrated in the St Eunan's Road area of Aboyne.

Household Income per Data Zone (2023)

Data Zone	Households	Average Income	Median Income	Lower Quartile Income
S01006794	286	£ 44,150	£ 34,925	£ 19,555
S01006795	349	£ 60,780	£ 52,295	£ 30,486
S01006796	393	£ 63,074	£ 55,377	£ 33,826
S01006797	241	£ 64,213	£ 56,558	£ 34,531
S01006798	259	£ 62,920	£ 55,247	£ 33,257
S01006799	429	£ 43,041	£ 34,991	£ 18,920
S01006800	357	£ 70,063	£ 62,261	£ 38,267

Household Income per Band, Aboyne and South Deeside & Aberdeenshire (2023)



© CACI Limited 1996 - 2022 This report shall be used solely for academic, personal and/or non-commercial purposes. The applicable copyright notices can be found at <https://www.caci.co.uk/copyrightnotices.pdf>

Median Household Income (2023)



£49,456

Aberdeenshire: £41,756

£49,456



% of Households Earning Less Than £10k (2023)



<£10K

3.9%

Aberdeenshire: 5.3%

3.9%



% of Households Earning More Than £100k (2023)



>£100K

14.3%

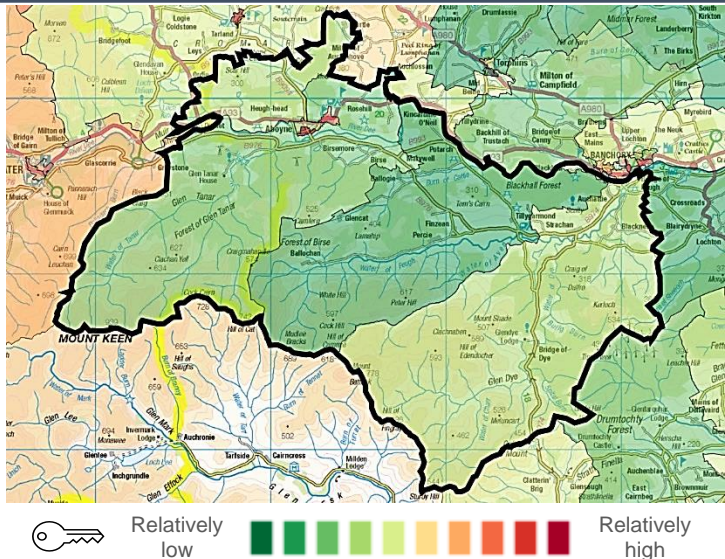
Aberdeenshire: 10.1%

14.3%

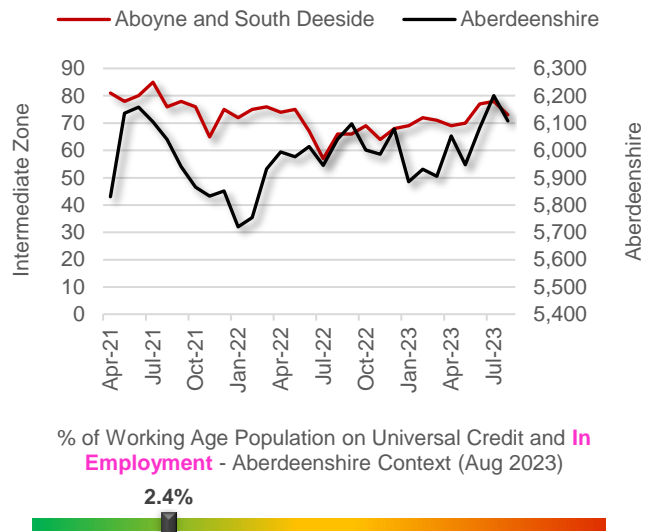


Aboyne and South Deeside Economic Data (2 of 3)

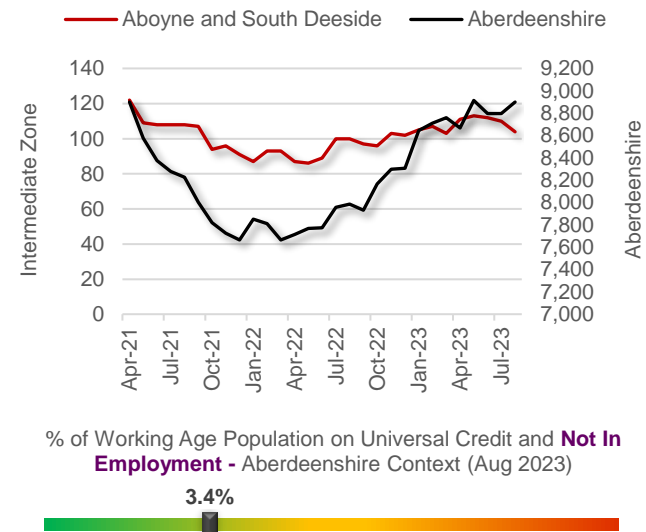
Latest Unemployment Rate - Ranking per Data Zone



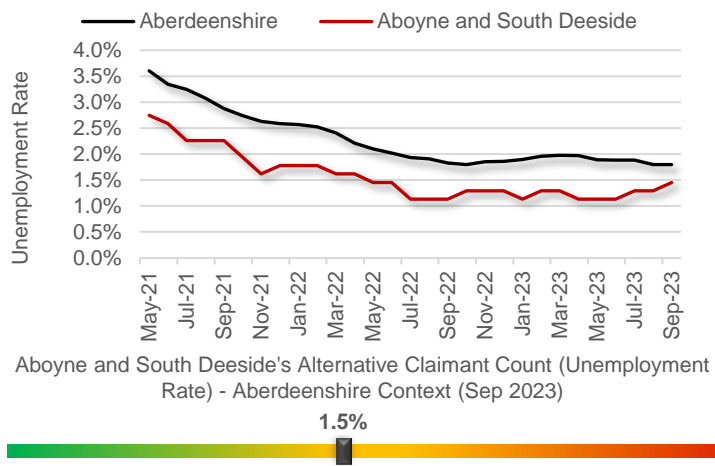
People on Universal Credit - In Employment



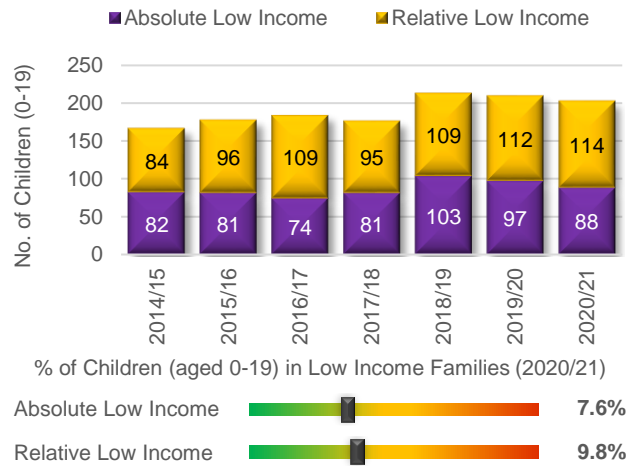
People on Universal Credit - Not In Employment



Alternative Claimant Count - Effective 'Unemployment Rate'



Children in Low Income Families



Summary

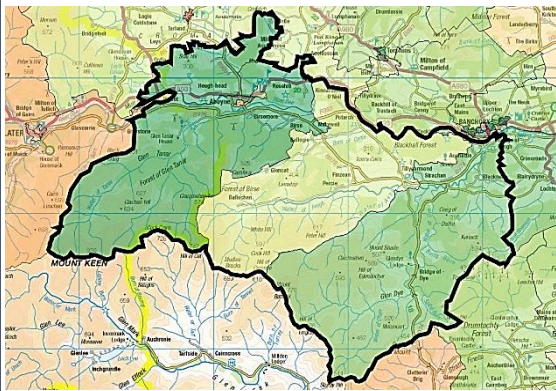
Fewer people are claiming Universal Credit (UC) compared to the first few months of 2021 (the post-Covid peak). The IZ's trend is more or less in keeping with the wider Aberdeenshire trend. The IZ has seen a slight uptake of people on UC and in employment summer of 2022. This suggests certain people in work may be feeling the pinch of the cost-of-living crisis more keenly than they perhaps had previously.

Like Aberdeenshire, the unemployment rate in the IZ has fallen substantially since the Feb 2021 peak of 3.6%. Latest data suggests approximately 1.5% of the Working Age population is currently out-of-work, which is slightly lower than the Shire-wide rate, but an increase relative to the summer 2023 low. The rate ranges from 0.0% (S01006798, which is the large rural area to the south of Banchory, encompassing areas such as Strachan) to 4.8% (S01006794, which covers the area to the south of Aboyne Academy).

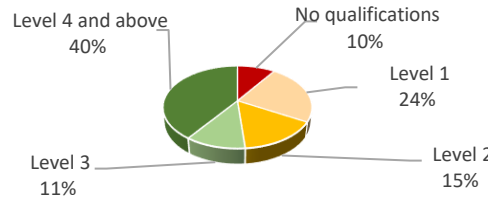
At 9.8%, the proportion of children living in relative low-income households is slightly better than the Aberdeenshire IZ average. However, the number of children appears to have increased since 2018/19.

Aboyne and South Deeside Economic Data (3 of 3)

People With No Qualifications, Census 2011



% of Employees per Qualification Type



Summary

The employment numbers per broad industrial group relate to the kind of jobs within the area, which may be filled by those living outwith the IZ.

Employment in this IZ is generally spread out among a number of industrial groups, the main ones being Education, Health, Retail, Construction, and the Professional, scientific and technical sector. Of the larger industries in the area, Retail appears to have grown over the past few years, by 33% since 2020, which suggests something of a 'bounce back' post Covid. The Professional, scientific and technical sector also saw employee numbers increase over that period, by 29%. The Accommodation and food services industry has not fared so well, with numbers dropping 25% since 2020.

Overall, the refreshed data suggests a relatively healthy jobs market, with employee numbers increasing 10% since 2020.

The decline in the number of small enterprises (< £200k in sales) over the past couple of years suggests the area didn't emerge from Covid entirely unscathed from a small business point of view.

Approximate Employment Count per Broad Industrial Group, Aboyne and South Deeside, 2020-22

Broad Industrial Group	2020	2021	2022	2020-22 % Diff.
Agriculture, forestry & fishing	50	75	75	50%
Mining, quarrying & utilities	10	10	10	0%
Manufacturing	75	75	75	0%
Construction	175	200	175	0%
Motor trades	10	15	20	100%
Wholesale	5	10	5	0%
Retail	150	150	200	33%
Transport & storage (inc postal)	30	25	20	-33%
Accommodation & food services	100	50	75	-25%
Information & communication	25	15	15	-40%
Financial & insurance	0	0	0	0%
Property	40	40	30	-25%
Professional, scientific & technical	175	150	225	29%
Business administration & support services	50	75	75	50%
Public administration & defence	25	35	45	80%
Education	225	225	225	0%
Health	225	225	200	-11%
Arts, entertainment, recreation & other services	125	125	175	40%
Total	1,495	1,500	1,645	10%

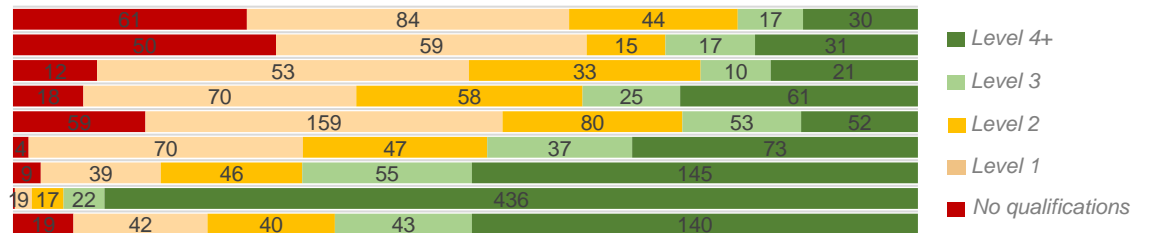
Approximate Number of Enterprises per Turnover Band (£), Aboyne and South Deeside, 2021-23

Turnover	2021	2022	2023	2021-23 % Diff.
£1m+	0	5	10	0%
£500-999k	5	5	0	-100%
£200-499k	35	45	40	14%
£100-199k	120	125	100	-17%
£50-99k	60	70	70	17%
£0-49k	60	45	40	-33%

Employees per Occupation Type, Census 2011

Elementary occupations	236
Process, plant and machine operatives	172
Sales and customer service occupations	129
Caring, leisure and other service occupations	232
Skilled trades occupations	403
Administrative and secretarial occupations	231
Associate professional and technical...	294
Professional occupations	485
Managers, directors and senior officials	284

Employees per Qualification & Occupation Type, Census 2011



Aboyne and South Deeside Housing Data



Relatively sparse / rural

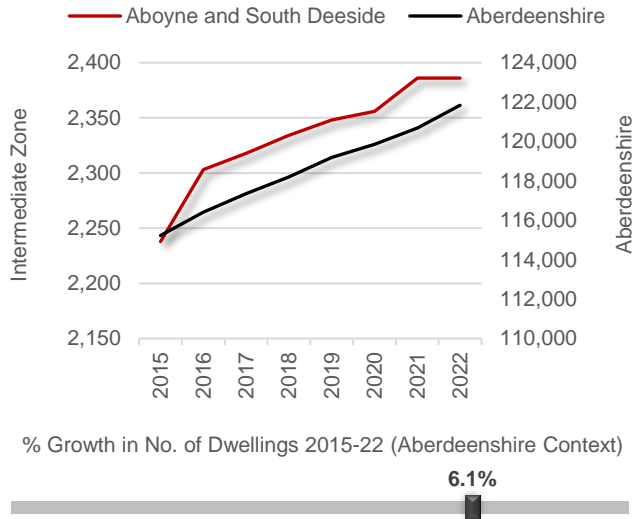
0.05

Dwellings per Hectare (2022)



Relatively dense / urban

Number of Dwellings, 2015-22



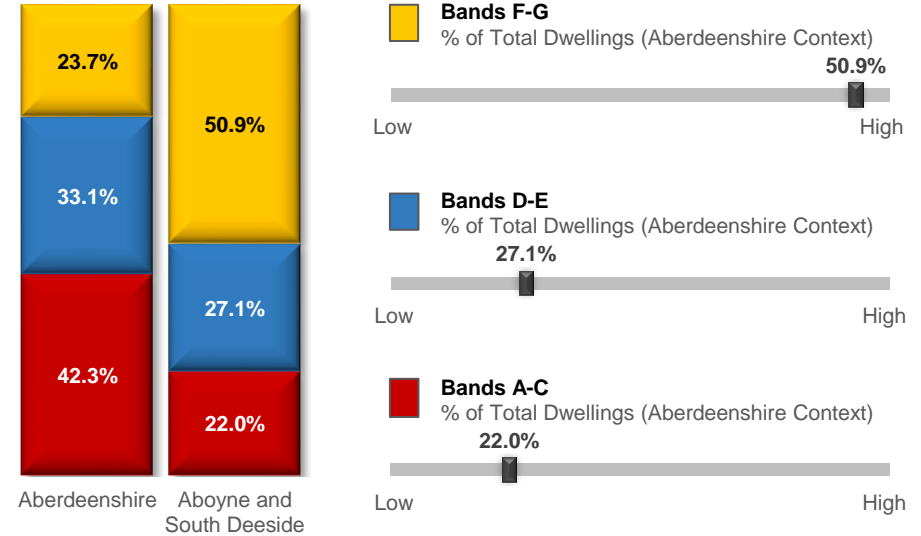
Summary

At 0.05 dwellings per hectare, this IZ is among the most rural - or sparsely populated - in Aberdeenshire. Given that the western portion of the IZ borders Mount Keen, this is not unexpected.

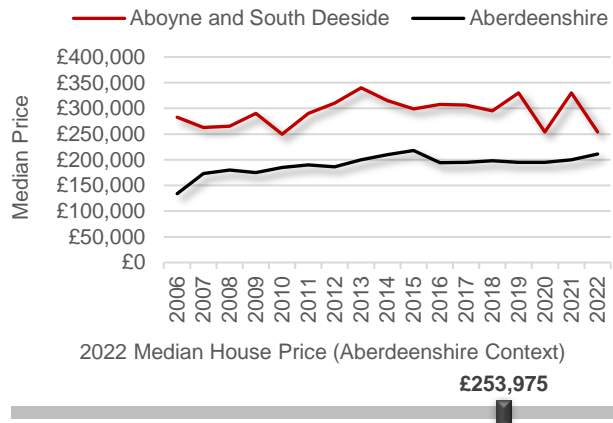
The number of houses in this area has increased by 6.1% since 2015, which is one of the highest growth rates in Aberdeenshire. Given that the population has increased over a similar period and increased at one of the fastest rates in Aberdeenshire, this outcome is arguably not surprising.

The IZ is home to a greater proportion of properties in the F-G Council Tax Band than Aberdeenshire as a whole - indeed, at 50.9%, the proportion of properties in the F-G band is among the highest in the Shire. Consequently, median house prices in the area are generally higher in this IZ relative to the rest of Aberdeenshire (£254,000 versus £211,000).

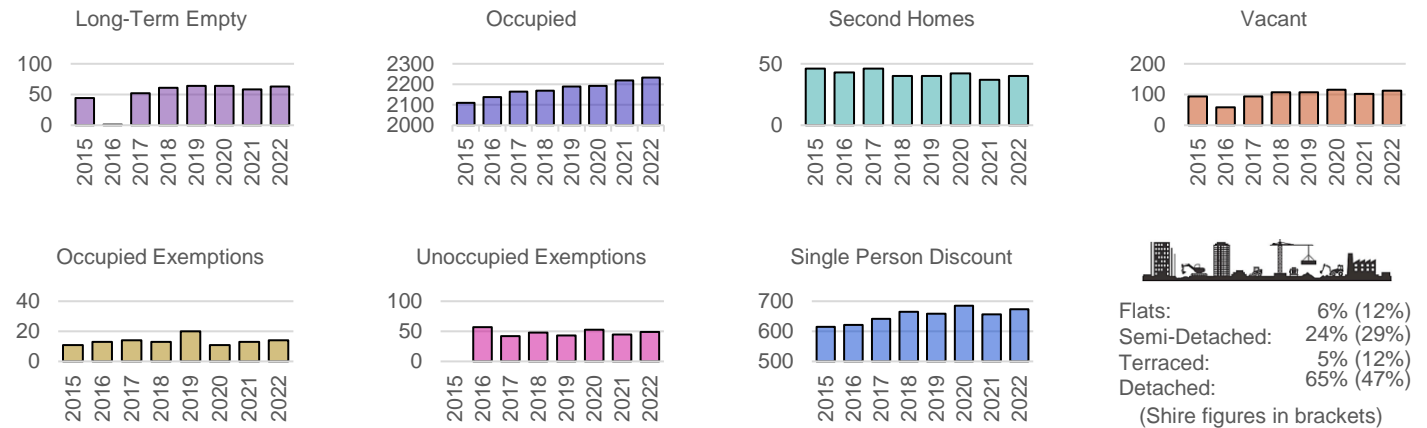
Proportion of Dwellings per Council Tax Band, 2022



Median Residential House Prices (Sales), 2006-22



Housing Types, 2015-22 (Data on Flats, etc., relate to 2017 - the latest year for which data are available)



Aboyne and South Deeside Other Socio-Economic Data

