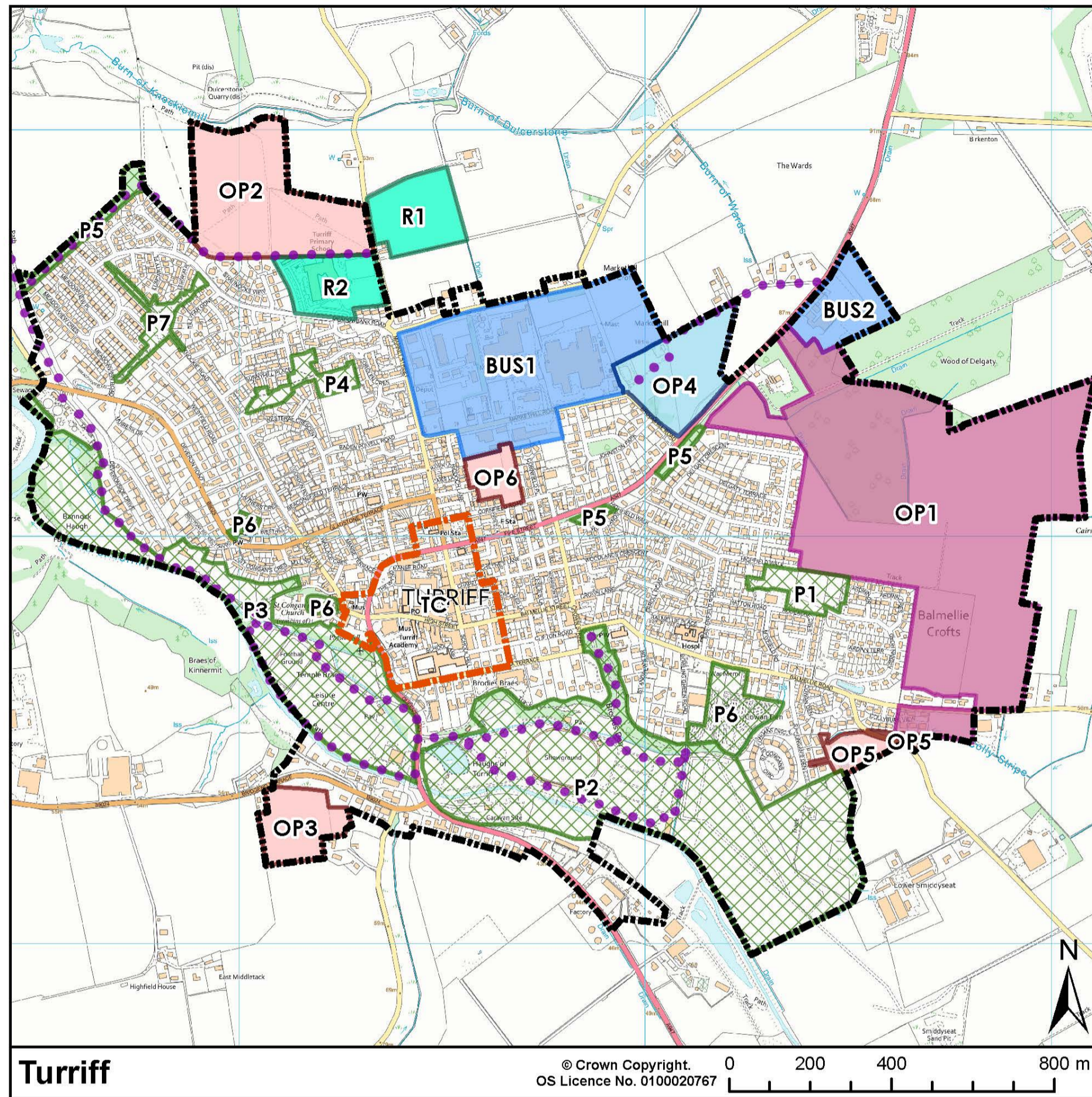


Turriff



OP1: Adjacent to Wood of Delgaty (450 homes, 10ha employment land, commercial land and community facilities)

- A Masterplan has been agreed for this site.
- Development has not progressed to date.

OP2: North of Shannocks View (227 homes)

- A Masterplan was agreed for this site in 2013, with an addendum agreed in 2017.
- Development has not progressed to date.

OP3: Adjacent to Bridgend Terrace (40 homes)

- A newly allocated site.

OP4: Adjacent to Broomhill Road/Markethill Industrial Estate (4.5ha employment land)

- A Masterplan will be required for this site.
- Access should be considered jointly with OP1.

OP5: South of Colly Stripe, Smiddyseat Road (27 homes)

- A newly allocated site.

OP6: Land North of Cornfield Road (40 homes)

- A newly allocated site on brownfield land previously safeguarded as business land (part of BUS1) in the LDP 2017.

Reserved Land: R1 For a new cemetery

R2 Site for replacement Markethill Primary School