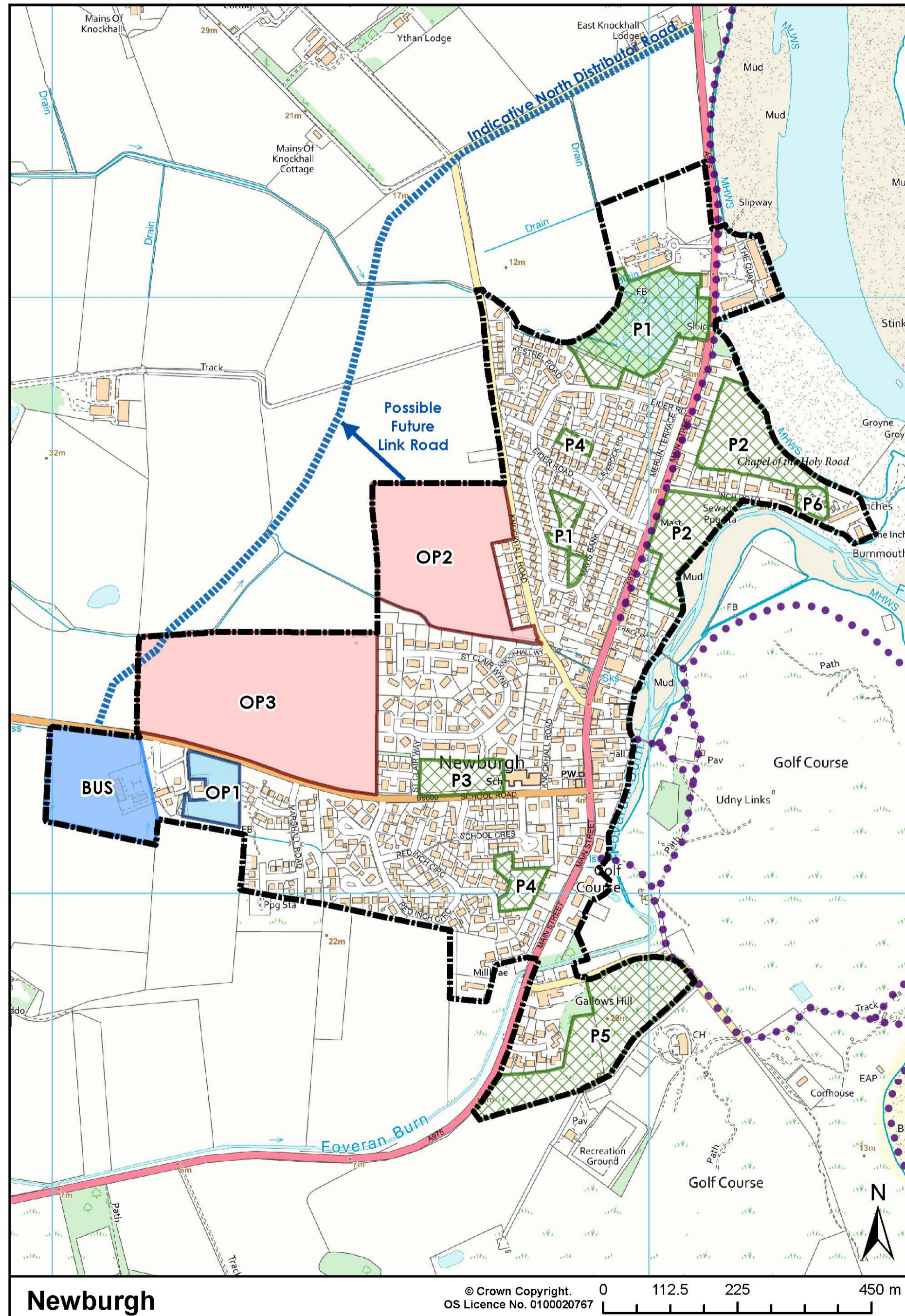


Newburgh



OP1: West of Airyhall View (Community facilities and 0.8ha employment land)

- This site is being carried forward from the LDP 2017.

OP2: Knockhall Road (60 homes)

- Previously in the LDP 2017 and has been reallocated with an amended boundary.
- Has an approved Masterplan.
- Planning Permission exists on the site.
- Under construction and expected to be built out by 2021.

OP3: Land North of School Road, Mill of Newburgh (160 homes)

- A newly allocated site.
- A Masterplan is required.