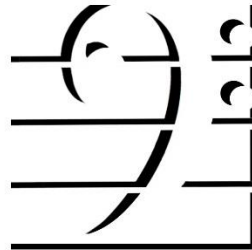




# Instrumental Music Service



## Report Session 2016 – 2017

### Table of Contents

1	Vision, Values and Aims.....	2
2	The Instrumental Music Service .....	2
3	Charging Policy .....	3
4	Budget .....	4
5	Consultation.....	4
6	External examinations .....	7
7	Extra-curricular activities .....	8
8	Scottish Concert Band Festival Achievements .....	8
9	Aberdeenshire Schools Pipe Band.....	9
10	Aberdeenshire Youth Orchestra.....	9

# 1 VISION, VALUES AND AIMS

---

## 1.1 VISION

We believe that our Instrumental Music Service can make a major contribution to fulfilling the Council's Vision.

\* Our ambition is to offer the best opportunities for as many people as possible to benefit from our Service.

We will enrich the lives of the citizens of Aberdeenshire through music.

## 1.2 VALUES

We uphold the Education and Children's Services values of quality, equality, engagement and integrity by our commitment to pupils and parents.

## 1.3 AIMS

- To enrich the lives of people and to contribute to their personal, social and intellectual development
- To provide opportunities for all to benefit from learning music
- To provide opportunities for pupils and the wider community to experience a broad range of music-making
- To work in partnership with schools, organisations and individuals
- To enable students to develop confidence and self-esteem through the attainment of instrumental and vocal skills

\* "Serving Aberdeenshire from mountain to sea – the very best of Scotland"

# 2 THE INSTRUMENTAL MUSIC SERVICE

---

## 2.1 CORE SERVICE

The Instrumental Music Service (IMS) operates in all 17 Community School Networks across Aberdeenshire, providing group and individual lessons.

	2016/2017	2015/2016
Pupils who received tuition	3060	2651
Pupils registered on the IMS waiting list	1244	886

There were 56 instrumental instructors with a full time equivalent (FTE) of 38.5. Instrumental instruction was offered in 9 disciplines:

Discipline	2016/2017	2015/2016
Woodwind	5.4 FTE	5.4 FTE
Brass	5.6 FTE	5.6 FTE
Percussion	2.9 FTE	2.9 FTE
Piano/Keyboard	4.3 FTE	4.3 FTE
Guitar	2.8 FTE	2.8 FTE
Violin/Viola	12.6 FTE	12.6 FTE
Cello/Double bass	3.3 FTE	3.3 FTE
Bagpipes*	1.0 FTE	1.0 FTE
Pipe Band Drumming*	0.6 FTE	0.6 FTE

\* Through match funding from the Scottish Schools Pipes and Drums Trust a bagpipes instructor and a pipe band drums instructor were introduced to the Banff network in 2016.

## 2.2 MUSIC CENTRE

Aberdeenshire Council provides a comprehensive music centre service, designed to meet the needs of pupils of all ages, from very young to advanced players. Junior groups meet on Saturday mornings in Stonehaven, Inverurie and Fraserburgh. Senior groups meet on Tuesdays and Fridays after school in Westhill and Mintlaw. Pupils may attend more than one Aberdeenshire Music Centre at no additional cost.

	2016/2017	2015/2016	2014/2015
Annual membership charge	£65	£64	£63
Number of pupils taking part	503	453	453

## 2.3 YOUTH MUSIC INITIATIVE

The Instrumental Music Service works in partnership with the Arts Development Team to provide a range of musical experiences, including the Kodaly Singing and Musicianship Programme, through Youth Music Initiative funding. Creative Scotland (formerly The Scottish Arts Council) administers the funding.

Various programmes are in place to provide instrumental and vocal tuition as well as to meet the initial Youth Music Initiative target, that by 2006 every primary school pupil would have the opportunity to access one year's free music tuition by primary 6.

Further information is available at: <http://www.aberdeenshire.gov.uk/yml>

## 3 CHARGING POLICY

### 3.1 CHARGES

The Council has a policy of charging parents/guardians a moderate annual fee, payable in 4 equal termly instalments. This fee represents a contribution towards the overall cost of tuition. Tuition is offered on an individual or group basis.

	2016/2017	2015/2016	2014/2015
Individual	£316 [£79 per ten week period]	£304 [£76 per ten week period]	£300 [£75 per ten week period]
Group	£212 [£53 per ten week period]	£204 [£51 per ten week period]	£200 [£50 per ten week period]

An annual inflationary increase based on the retail price index excluding mortgages (RPIX) is applied to fees.

### 3.2 SIBLING DISCOUNTS

A 20% discount is applied to each child when 2 or more siblings are paying for tuition. To receive the discount each sibling must be registered with the same contributor (person responsible for payment).

	2016/2017	2015/2016	2014/2015
Sibling discounted tuition numbers	530	476	339

### 3.3 EXEMPTIONS

Pupils registered for free school meals are exempt from Music Tuition fees.

	2016/2017	2015/2016	2014/2015
free school meals exempt tuition	159	112	135

All senior phase (S4 to S6) pupils receiving instruction on an instrument for an SQA course are exempt from charges. SQA courses include Higher Music, Advanced Higher Music, National 4 Music, National 5 Music, and free standing Music units e.g. 'Performing Music on One Instrument or Voice' coded F3F4.

	2016/2017	2015/2016	2014/2015
SQA exempt tuition	402	353	385

## 4 BUDGET

---

### 4.1 REVENUE

Income from tuition fees (financial year)

	2016/2017	2015/2016	2014/2015
Income from tuition fees	£436K	£418K	£411K

### 4.2 FINANCE

The gross total running cost of the IMS is in the region of £1.6M

### 4.3 BUDGET

The IMS budget is approximately 0.07% of the Education budget.

## 5 CONSULTATION

---

### 5.1 SURVEY

An online survey received a total of 433 responses, including parents of children who are not receiving tuition, children who are currently receiving tuition, and children who have left school.

### 5.2 SURVEY SUMMARY

#### 5.2.1 IMS Aims

92% of respondents agreed with the IMS Aims, 4% disagreed and 4% had no opinion. Comments from those who disagreed included reference to the lack of opportunity at their school and issues of fairness over the selection procedure.

#### 5.2.2 Registration

62% of respondents were unaware that parents can register their child online for the Instrumental Music Service waiting list.

#### 5.2.3 Policy for Group tuition

87% of respondents agreed that beginners should be taught in groups, 11% disagreed and 3% had no opinion. Comments include concerns about meeting children's individual needs and coping with differing learning pace in a group situation.

#### 5.2.4 Allocation of lessons

72% agreed that instrumental lessons during the school day should normally be limited to one instrument per child, 23% disagreed and 5% had no opinion. Comments mostly made the case for allowing a second instrument if the child could justify it with aptitude and industry.

#### 5.2.5 Waiting List

74% agreed that the waiting list system should help the service plan the Instructors' timetables, 5% disagreed and 21% had no opinion. Comments included disappointment that pupils on the waiting list had never been given the opportunity to learn an instrument. Respondents also pointed out that the concept of a waiting list is inconsistent with the IMS aim "To provide opportunities for all to benefit from learning music".

#### 5.2.6 Disadvantaged children

87% agreed that the system should accommodate disadvantaged children and children with additional support needs when possible, 6% disagreed and 7% had no opinion. Comments included concerns that the system should promote equality and that tuition should be provided for children "with the most dedication and best ability to learn the instrument".

### 5.2.7 Aptitude testing

64% agreed that aptitude testing is an appropriate way of determining which pupils are offered tuition, 31% disagreed and 5% had no opinion. Comments included suggestions that willingness to learn, commitment etc. should be taken into account. It was pointed out that children with no previous musical experience would have a disadvantage.

### 5.2.8 Terms and conditions

85% agreed that the terms and conditions provides all necessary information and that the information provided is clear and concise, 3% disagreed and 12% had no opinion.

### 5.2.9 Instrumental Music Service lessons

	VERY GOOD	GOOD	POOR	VERY POOR	NO OPINION	TOTAL
organisation, content and pace)	39.81% 86	45.83% 99	6.02% 13	1.39% 3	6.94% 15	216
appropriate length	31.94% 69	55.56% 120	4.63% 10	0.46% 1	7.41% 16	216
timetabling	25.93% 56	56.48% 122	7.87% 17	0.93% 2	8.80% 19	216
information and forms	25.00% 54	48.15% 104	14.35% 31	2.31% 5	10.19% 22	216

### 5.2.10 The Instrumental Teachers:

	STRONGLY AGREE	AGREE	DISAGREE	STRONGLY DISAGREE	NO OPINION	TOTAL
inspire confidence	45.83% 99	37.50% 81	5.56% 12	0.46% 1	10.65% 23	216
maintain good discipline	47.44% 102	38.14% 82	0.93% 2	0.93% 2	12.56% 27	215
provide clear and informative progress reports	35.81% 77	38.14% 82	14.42% 31	4.65% 10	6.98% 15	215
give parents the opportunity to meet (or telephone) them once a year	38.03% 81	31.46% 67	13.15% 28	6.10% 13	11.27% 24	213

### 5.2.11 The Child:

	STRONGLY AGREE	AGREE	DISAGREE	STRONGLY DISAGREE	NO OPINION	TOTAL
enjoys instrumental lessons	56.02% 121	37.96% 82	3.70% 8	0.93% 2	1.39% 3	216
is encouraged and praised when appropriate	50.00% 108	38.89% 84	1.85% 4	0.46% 1	8.80% 19	216
plays suitable music	50.00% 108	39.81% 86	4.63% 10	0.46% 1	5.09% 11	216
individual needs are catered for	44.39% 95	37.38% 80	6.07% 13	2.34% 5	9.81% 21	214
is encouraged to play with others in a variety of groups	45.83% 99	33.80% 73	6.48% 14	0.46% 1	13.43% 29	216
has appropriate opportunities to take external exams	39.25% 84	21.96% 47	7.94% 17	3.74% 8	27.10% 58	214

### 5.2.12 National Qualifications

58% agreed that from s3 and above lessons are geared towards National Qualifications, 6% disagreed and 36% had no opinion.

### 5.2.13 Assisted purchase scheme

25% of respondents were aware of the musical instrument assisted purchase scheme.

### 5.2.14 Payment options

	STRONGLY AGREE	AGREE	DISAGREE	STRONGLY DISAGREE	NO OPINION	TOTAL
Payment options are adequate	23.15% 47	67.00% 136	4.43% 9	0.99% 2	4.43% 9	203
Online payment works reasonably well	28.16% 58	54.85% 113	4.85% 10	6.31% 13	5.83% 12	206

### 5.2.15 Customers' preferred payment methods

These are ranked in order of preference; 1 being the most preferred. (Some of these are not currently available)

	1	2	3	4	5	6	TOTAL	SCORE
Direct debit	20.57% 43	28.71% 60	14.35% 30	12.92% 27	13.88% 29	9.57% 20	209	4.00
Online (using debit/credit card)	69.38% 145	20.57% 43	6.22% 13	1.91% 4	0.96% 2	0.96% 2	209	5.53
Over the phone (using debit/credit card)	2.39% 5	17.70% 37	35.89% 75	17.70% 37	15.79% 33	10.53% 22	209	3.42
Top up card	0.96% 2	9.57% 20	12.44% 26	15.31% 32	29.19% 61	32.54% 68	209	2.40
Cheque	5.26% 11	17.70% 37	22.01% 46	33.49% 70	13.40% 28	8.13% 17	209	3.44
Cash	1.44% 3	5.74% 12	9.09% 19	18.66% 39	26.79% 56	38.28% 80	209	2.22

#### 5.2.16 Free School Meals exemption

63% agreed that the current Free School Meals registration tuition fee exemption is appropriate, 11% disagreed and 26% had no opinion.

## 6 EXTERNAL EXAMINATIONS

Pupils were entered for a range of external examinations, including Associated Board of the Royal Schools of Music, Trinity College, London College of Music and Rockschool.

### 6.1 INSTRUMENTAL GRADED EXAMS ATTAINED

Grade	1	2	3	4	5	6	7	8
2016/17	181	123	112	67	52	26	19	21
2015/16	143	105	108	53	64	32	17	14

### 6.2 MUSIC MEDALS ATTAINED

	Copper	Bronze	Silver	Gold	Platinum
2016/17	18	15	4	7	2
2015/16	15	25	7	3	-
2014/15	12	13	7	2	-

## 7 EXTRA-CURRICULAR ACTIVITIES

Instrumental Music Instructors contribute to the musical life of the school through participation in extra-curricular activities.

Extra-curricular activity	2016/2017	2015/2016
occasions involving music instructors during the lunch break or outside the school pupil day	3541	3171
events involving music instructors during the lunch break or outside the school pupil day	272	270

Extra-curricular activities included:	Events included:
<ul style="list-style-type: none"><li>• Brass ensemble</li><li>• Ceilidh Band</li><li>• Choir</li><li>• Concert Band</li><li>• Guitar Group</li><li>• Junior Band</li><li>• Orchestra</li><li>• Piano Accompaniment</li><li>• Percussion Group</li><li>• String Group</li><li>• Theory Group</li><li>• Chamber Group</li><li>• Aural</li></ul>	<ul style="list-style-type: none"><li>• Concerts</li><li>• Shows</li><li>• prize giving ceremonies</li><li>• festivals</li><li>• competitions</li><li>• other school ensemble performances</li></ul>

## 8 SCOTTISH CONCERT BAND FESTIVAL ACHIEVEMENTS

Three Aberdeenshire Concert Bands attained awards at the Scottish Concert Band Festival

### 8.1 GOLD AWARD: PORTLETHEN ACADEMY CONCERT BAND

Conducted by Sarah Gove, Sunday 26<sup>th</sup> November 2016

### 8.2 GOLD AWARD: MACKIE ACADEMY CONCERT BAND

Conducted by Sarah Gove, Sunday 26<sup>th</sup> November 2016

### 8.3 PLATINUM AWARD: SOUTH CENTRAL ABERDEENSHIRE MUSIC CENTRE YOUTH BAND

Conducted by Bruce Wallace, Sunday 26<sup>th</sup> November 2016

### 8.4 GOLD PLUS AWARD: PORTLETHEN ACADEMY CONCERT BAND

Conducted by Sarah Gove, National Finals, Perth Concert Hall Saturday 18<sup>th</sup> March 2017

### 8.5 GOLD PLUS AWARD: MACKIE ACADEMY CONCERT BAND

Conducted by Sarah Gove, National Finals, Perth Concert Hall Saturday 18<sup>th</sup> March 2017

### 8.6 GOLD AWARD: SOUTH CENTRAL ABERDEENSHIRE MUSIC CENTRE YOUTH BAND

Conducted by Bruce Wallace, National Finals, Perth Concert Hall Sunday 19<sup>th</sup> March 2017



## 9 ABERDEENSHIRE SCHOOLS PIPE BAND

---

The Aberdeenshire Schools Pipe Band gave its debut performance at the 'Inspiring Aberdeenshire' event at The Canadian Hall, Haddo House, on Friday 23 June 2017, entertaining an audience of 160 guests for the awards ceremony.

## 10 ABERDEENSHIRE YOUTH ORCHESTRA

---

60 young musicians attended the Aberdeenshire Youth Orchestra residential course with professional conductor Susan Dingle, performing a programme of orchestral music at the Inverurie Town Hall on Sunday 25<sup>th</sup> June 2017.

[www.aberdeenshire.gov.uk/ayo](http://www.aberdeenshire.gov.uk/ayo)