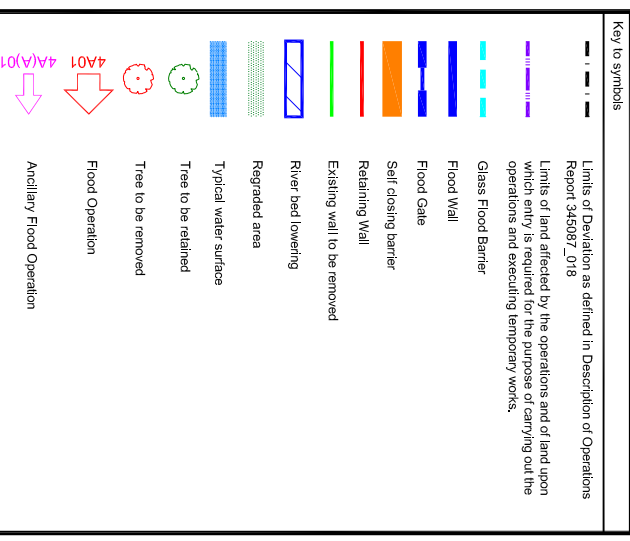


- Notes**
- These drawings are in accordance with the requirements of Section 60 and Schedule 2 of the Flood Risk Management (Scotland) Act 2009.
 - These drawings are to be read in conjunction with Stonehaven Flood Protection Scheme, Description of Operations, Report Reference 345087_018.
 - All levels are in metres relative to Ordnance Datum Newlyn
 - Existing walls will require removal and / or rebuilding as necessary, to construct the scheme.
 - Existing structures, as noted, will require removal and rebuilding, as necessary.
 - Operations above Carron Water and Burn of Glaslaw will be finished with a scheme of planting and landscaping.
 - Any outfalls discharging into Carron Water and Burn of Glaslaw identified within the operations, will incorporate appropriate backflow prevention measures.
 - Information received from statutory undertakers has been used to identify locations of services. Exact locations of these services will be determined during detailed design.



Reference drawings

MMD-345087-C-DR-00-XX-8000	FPO Overall Scheme Layout
MMD-345087-C-DR-00-XX-8001	FPO GA Sheet 1 of 6
MMD-345087-C-DR-00-XX-8002	FPO GA Sheet 2 of 6
MMD-345087-C-DR-00-XX-8003	FPO GA Sheet 3 of 6
MMD-345087-C-DR-00-XX-8004	FPO GA Sheet 4 of 6
MMD-345087-C-DR-00-XX-8005	FPO GA Sheet 5 of 6
MMD-345087-C-DR-00-XX-8006	FPO GA Sheet 6 of 6

Rev.	Date	Description	Drawn	Checked
P4	21/02/17	FRM Act Issue with Amendments	LC	SAK
P3	24/06/15	SS Flood Risk Management Act Issue	LC	SGR
P2	23/06/15	SS Secondary Issue	LC	SGR
P1	02/06/15	SS Preliminary Issue	LC	SGR

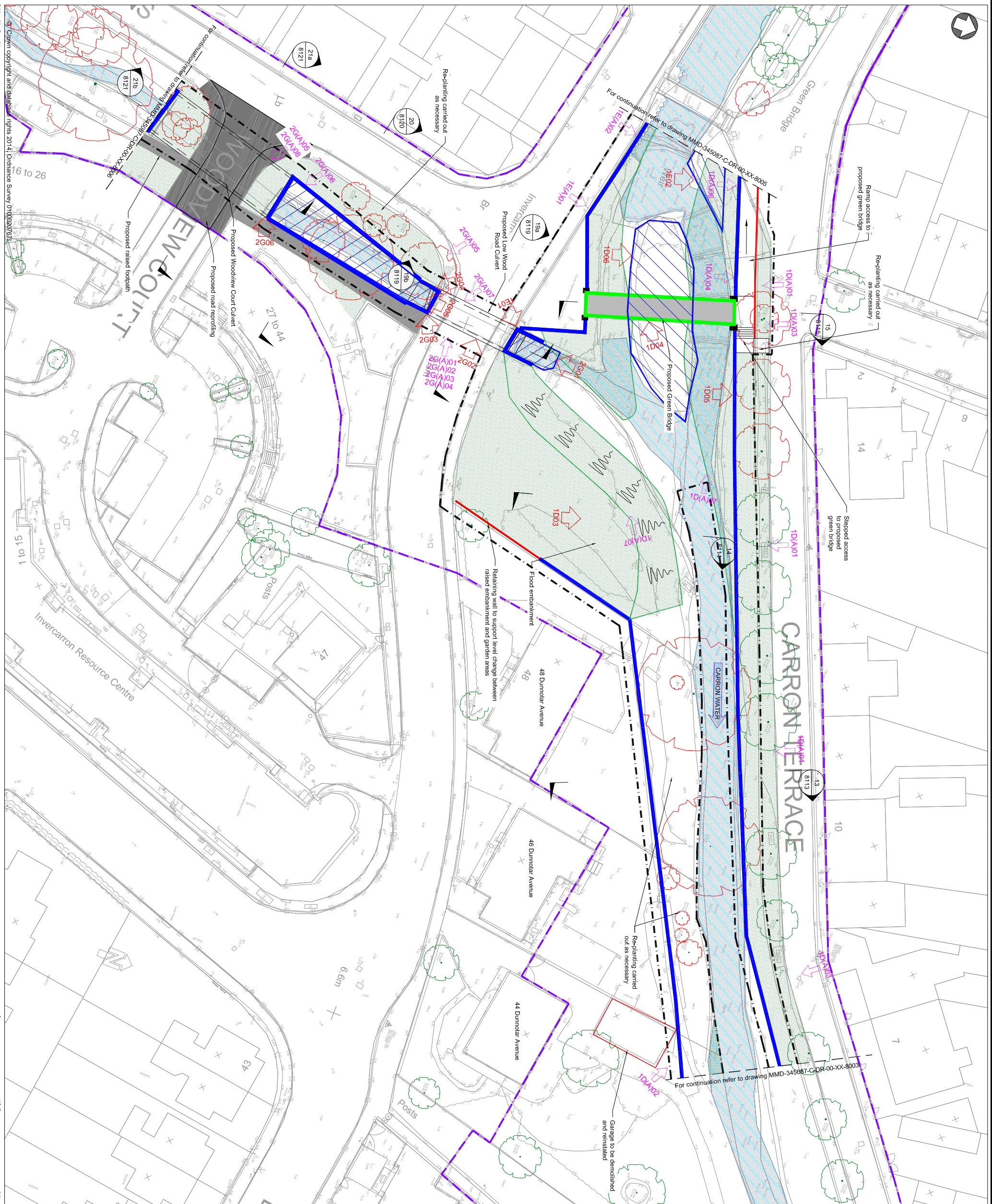
Mott MacDonald
 Mory House,
 16-18 Bank Street,
 Inverness, IV1 1OY,
 United Kingdom
 T +44 (0)1463 239533
 F +44 (0)1463 239532
 W www.mottmac.com

Aberdeenshire COUNCIL

Title
 Stonehaven FPS
 Flood Protection Operations
 General Arrangement
 Sheet 4 of 6

Scale at A1	Scale at A0	Status	Rev	Project	Security
1:250	PRE	Rev	P4	STD	

Drawing Number **MMD-345087-C-DR-00-XX-8004**



© Mott MacDonald
 This document is issued for the party which commissioned it and for specific purposes connected with the captioned project only. It should not be relied upon by any other party or used for any other purpose. We accept no responsibility for the consequences of this document being relied upon by any other party, or being used for any other purpose, or containing any error or omission in data supplied to us by other parties.
 PIN:\mms\Projects\DR\WMS\345087- Stonehaven FPS\8000-FPO GA Sheet Layouts\MMD-345087-C-DR-00-XX-8004_P4.dwg Feb 21, 2017 - 4:58:41 AM